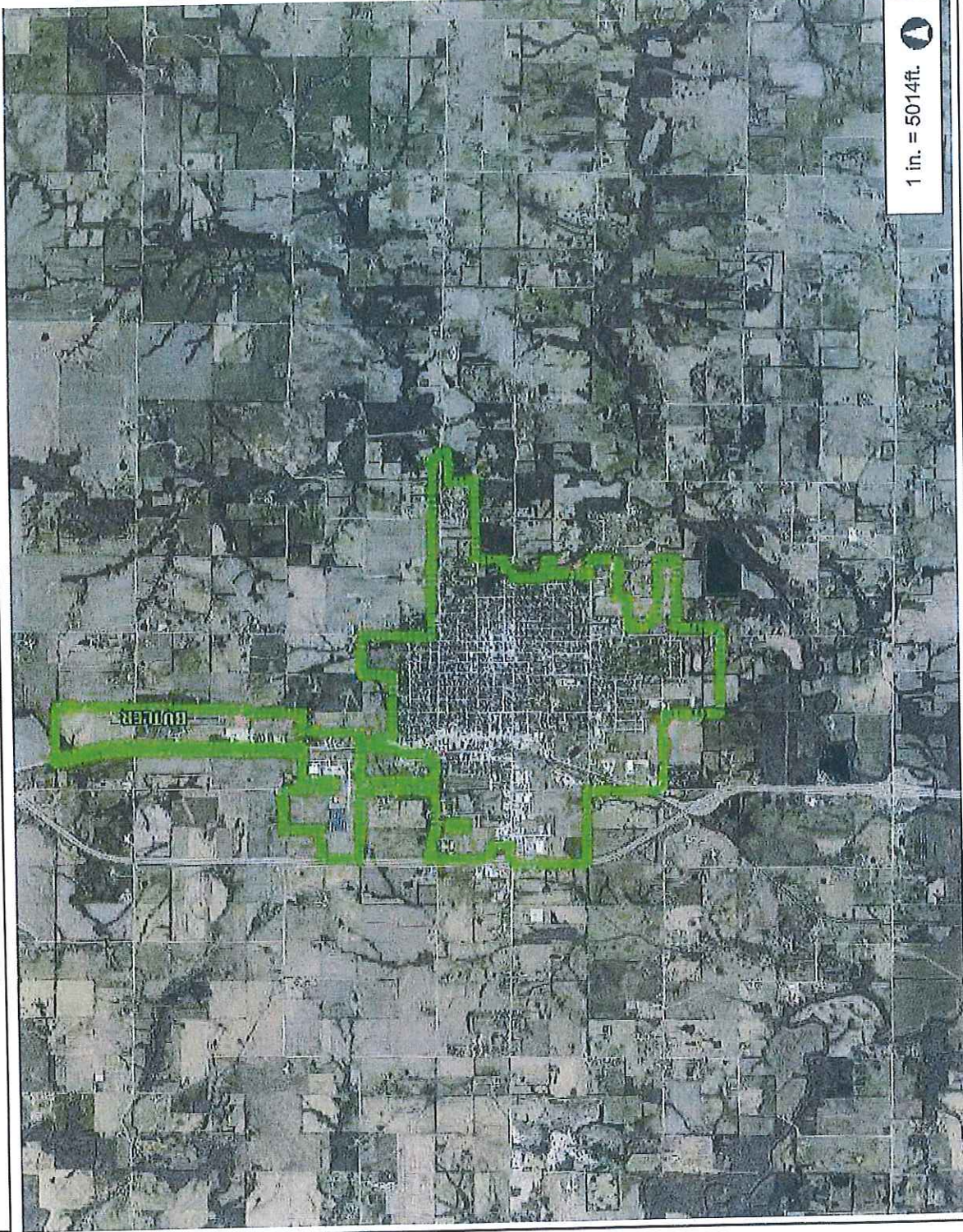


EXHIBIT I - Amended

The following are maps of the corporate boundaries for the City of Butler, representing the current electrical service area of the City not including the properties to be added pursuant to this Territorial Agreement.

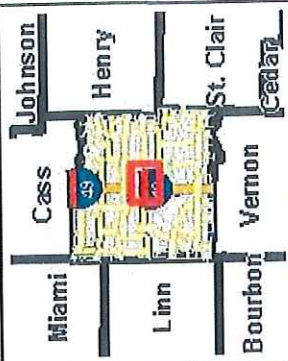
Bates County, MO



1 in. = 5014ft.

10,027.1
0 5,013.54 10,027.1 Feet

This Cadastral Map is for informational purposes only. It does not purport to represent a property boundary survey of the parcels shown and shall not be used for conveyances or the establishment of property boundaries.
THIS MAP IS NOT TO BE USED FOR NAVIGATION



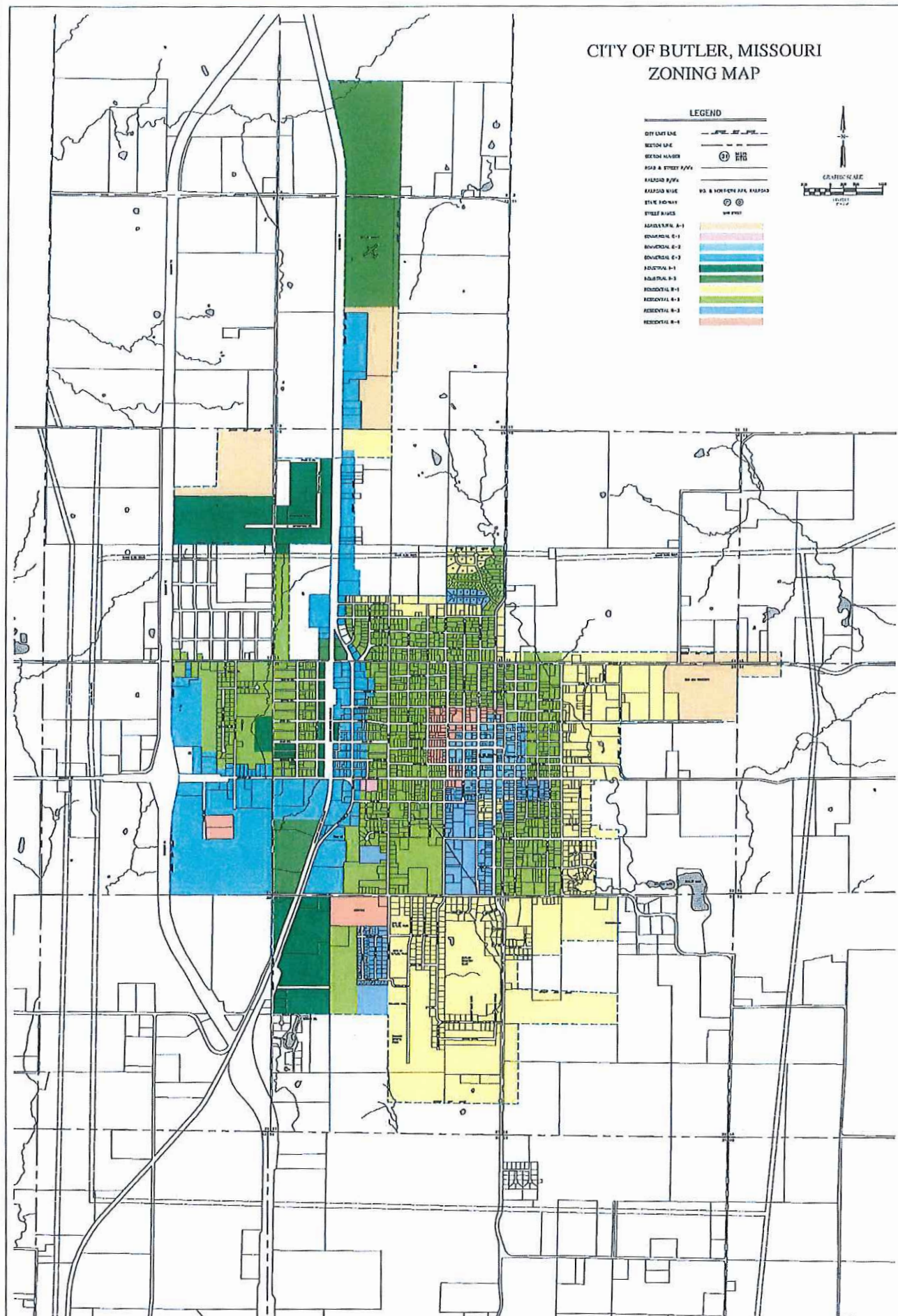
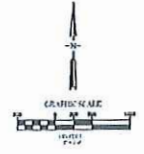
Legend
Corporate Limit Line

Notes

CITY OF BUTLER, MISSOURI ZONING MAP

LEGEND

CITY LIMIT LINE	---
SECTION LINE	---
SECTION NUMBER	① 110
RAILROAD R/W	---
RAILROAD R/W	RS. & NORTH ST. RAILROAD
STATE HIGHWAY	② 110
STREET R/W	---
APARTMENT A-1	Yellow
INDUSTRIAL I-1	Pink
INDUSTRIAL I-2	Light Blue
INDUSTRIAL I-3	Light Green
INDUSTRIAL I-4	Light Yellow
INDUSTRIAL I-5	Light Blue
INDUSTRIAL I-6	Light Green
INDUSTRIAL I-7	Light Yellow
INDUSTRIAL I-8	Light Blue
INDUSTRIAL I-9	Light Green
INDUSTRIAL I-10	Light Yellow



Excluding:

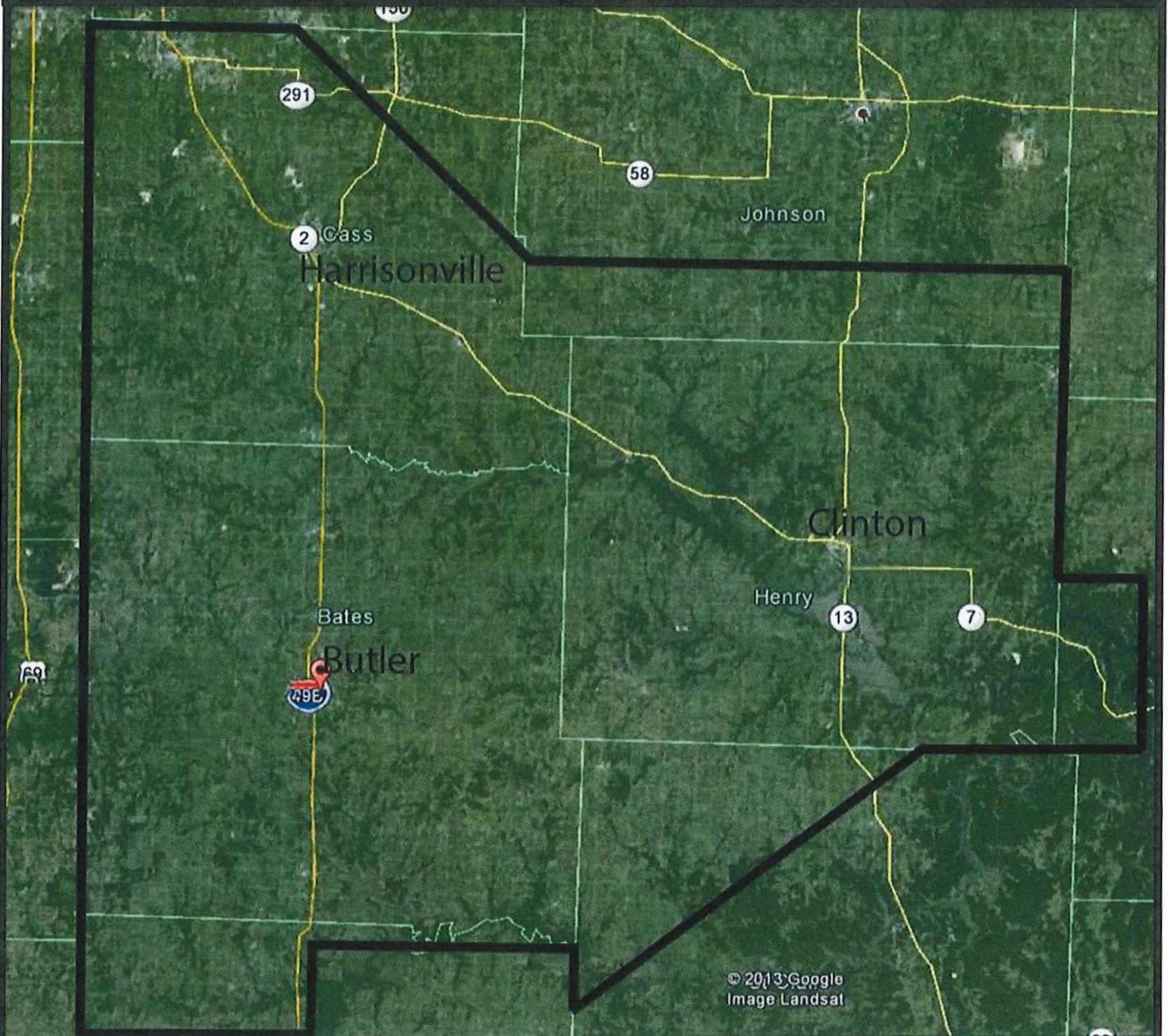
1311 N. Orange Street (crematory)



Exhibit 4 - Amended

The following is a map of the Cooperative's current service territory. Pursuant to this Territorial Agreement, the Cooperative's electric service area shall be this map referenced in Exhibit 4, EXCLUDING the property and territory referenced in Exhibit 1 (the City's corporate boundaries) and Exhibits 2 and 3 (the property and territory being added to the City's electric service area pursuant to this Territorial Agreement)

Osage Valley Electric Cooperative Service Territory



Osage Valley Electric Cooperative is a member-owned rural electric utility providing service in Bates, Cass, Henry, Johnson, Benton, St. Clair and Vernon Counties.



And:

1311 N. Orange Street (crematory)

