

DATA INFORMATION REQUEST
Confluence Rivers Utility Operating Company, Inc.
WR-2023-0006
General Rate Case

Requested From: Confluence Rivers

Date Requested: March 31, 2023

Information Requested:

Please identify and list all of Confluence Rivers Utility Operating Company's affiliates. For purpose of this question, please assume that an affiliate includes every person (including an individual, corporation, service company, corporate subsidiary, firm, partnership, incorporated or unincorporated association, political subdivision including a public utility district, city, town, county, or a combination of political subdivisions) which directly or indirectly, through one or more intermediaries, controls, is controlled by, or is under common control with Confluence Rivers and that "control" means the possession, directly or indirectly, of the power to direct, or to cause the direction of the management or policies of an entity, whether such power is exercised through one or more intermediary entities, or alone, or in conjunction with, or pursuant to an agreement with, one or more other entities, whether such power is exercised through a majority or minority ownership or voting of securities, common directors, officers or stockholders, voting trusts, holding trusts, affiliated entities, contract or any other direct or indirect means and further assume that the beneficial ownership of ten percent or more of voting securities or partnership interest of an entity constitutes control for purposes of this question..

Requested By: David Murray

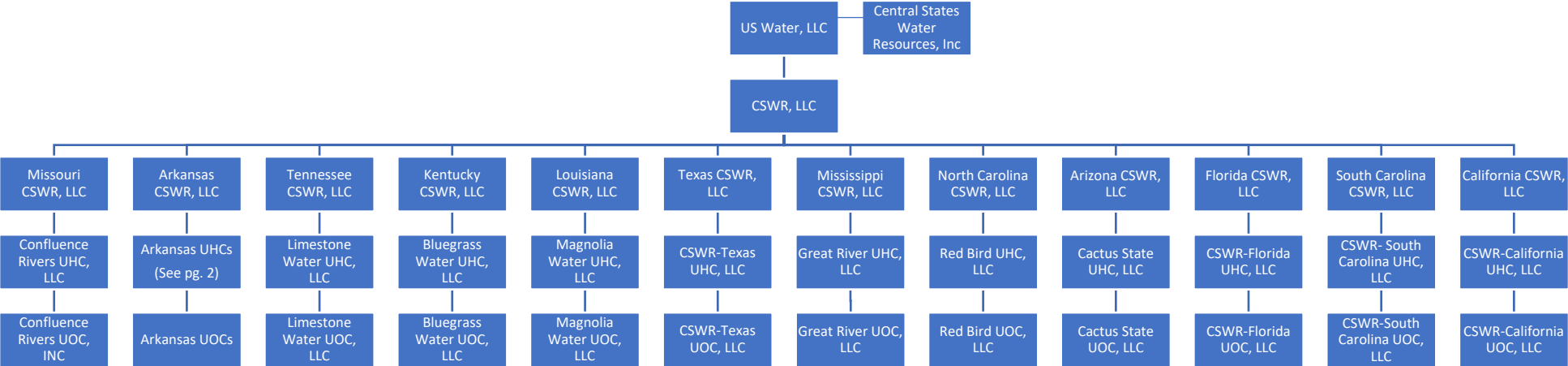
Information Provided:

Without waiving objections -

Please see the attached Corporate Organizational Chart.

Responsible Witness: Aaron Silas

Central States Water Resources Corporate Entity Organizational Chart



Arkansas CSWR Organizational Chart Detail

