

Exhibit No. 329P

OPC – Exhibit 329P
David Murray
Direct Testimony

File Nos. ER-2022-0129 & ER-2022-0130

Exhibit No.: _____
Issue(s): Rate of Return (ROR)/Capital Structure
Witness/Type of Exhibit: Murray/Direct
Sponsoring Party: Public Counsel
Case No.: ER-2022-0130

DIRECT TESTIMONY

OF

DAVID MURRAY

Submitted on Behalf of the Office of the Public Counsel

**EVERGY MISSOURI WEST, INC. D/B/A
EVERGY MISSOURI WEST**

CASE NOS. ER-2022-0130

** **
Denotes Confidential Information that has been redacted.

June 8, 2022

PUBLIC

**BEFORE THE PUBLIC SERVICE COMMISSION
OF THE STATE OF MISSOURI**

In the Matter of Evergy Missouri West,)
Inc. d/b/a Evergy Missouri West's)
Request for Authority to Implement a) Case No. ER-2022-0130
General Rate Increase for Electric)
Service)

AFFIDAVIT OF DAVID MURRAY

STATE OF MISSOURI)
) **ss**
COUNTY OF COLE)

David Murray, of lawful age and being first duly sworn, deposes and states:

1. My name is David Murray. I am a Utility Regulatory Manager for the Office of the Public Counsel.
2. Attached hereto and made a part hereof for all purposes is my direct testimony.
3. I hereby swear and affirm that my statements contained in the attached testimony are true and correct to the best of my knowledge and belief.



David Murray
Utility Regulatory Manager

Subscribed and sworn to me this 8th day of June 2022.



TIFFANY HILDEBRAND
My Commission Expires
August 8, 2023
Cole County
Commission #15637121



Tiffany Hildebrand
Notary Public

My Commission expires August 8, 2023.

TABLE OF CONTENTS

Testimony	Page
Fair Return on Common Equity	3
Cost of Equity Methods	18
Proxy Group Cost of Equity	23
Capital Structure	31
Summary and Conclusions	44

DIRECT TESTIMONY
OF
DAVID MURRAY
EVERGY MISSOURI WEST
FILE NO. ER-2022-0130

1 **Q. Please state your name and business address.**

2 A. My name is David Murray and my business address is P.O. Box 2230, Jefferson City,
3 Missouri 65102.

4 **Q. By whom are you employed and in what capacity?**

5 A. I am employed by the Missouri Office of the Public Counsel (“OPC”) as a Utility
6 Regulatory Manager.

7 **Q. On whose behalf are you testifying?**

8 A. I am testifying on behalf of the OPC.

9 **Q. What is the purpose of your testimony?**

10 A. To recommend a fair and reasonable rate of return (“ROR”) for purposes of setting Evergy
11 Missouri West’s (“MO West”) revenue requirement for its regulated electric utility
12 operations.

13 **Q. What experience, knowledge and education qualify you to sponsor ROR testimony in
14 this case?**

15 A. Please see the attached Schedule DM-D-1 for my qualifications as well as a summary of
16 the cases in which I have sponsored testimony on ROR and other financial issues.

17 **Q. What aspects of ROR will you address?**

18 A. I will address a fair and reasonable allowed return on common equity (“ROE”) and a fair
19 and reasonable capital structure.

1 **Q. What is your main conclusion after analyzing MO West’s specific financial situation**
2 **as well as the current state of capital markets?**

3 A. MO West’s allowed ROE should be set at 9%, but at the very least no higher than The
4 Empire District Electric Company’s (“Empire”) authorized ROE of 9.25% set in Case No.
5 ER-2019-0374. MO West’s authorized common equity ratio should be more consistent
6 with Evergy Inc.’s (“Evergy”) actual consolidated common equity ratios, which have
7 ranged between approximately 47% to 49% during the test year and the update period, with
8 an average of around 48% for the 12-month ended update period through December 31,
9 2021.

10 **Q. Before you discuss the details supporting your analysis, can you summarize the**
11 **rationale for your conclusions?**

12 A. Yes. Although capital structure and the allowed ROE are interrelated as to the ultimate
13 impact on MO West’s revenue requirement, I will first briefly explain my rationale for
14 each component, separately.

15 I recommend that the Commission set MO West’s allowed ROE for its electric utility
16 operations at 9% based on a range of 8.5% to 9.5%. Although recent increases in the cost
17 of utility debt capital and volatility in broader capital markets would seem to suggest an
18 increase to the utility industry’s cost of common equity (“COE”), utility stock valuation
19 ratios indicate otherwise. This has caused utility stocks to once again trade at a premium
20 relative to the S&P 500 (currently slightly above 1.1x), which had been the case prior to
21 the Covid-19 pandemic. Based on my analysis, the COE for regulated electric utilities is
22 currently in the range of 7% to 7.5%.

23 I recommend that the Commission set MO West’s authorized common equity ratio at 48%
24 rather than the 51.75% ratio Evergy targets for MO West. MO West’s business risk profile
25 declined after it became eligible to elect an investor-friendly ratemaking mechanism
26 referred to as plant in service accounting (“PISA”), which was enacted when Senate Bill

1 (“SB”) 564 took effect on August 28, 2018.¹ MO West formally elected PISA on January
2 1, 2019. MO West’s reduced business risk profile allows for greater debt capacity.
3 Moody’s and S&P acknowledge the reduced regulatory lag benefits afforded by the
4 passage of SB 564 in rating agency reports published on Missouri’s electric utility
5 companies.

6 **Q. Did you take any other matters into consideration when determining a fair and**
7 **reasonable allowed ROE to apply to your recommended capital structure?**

8 A. Yes. I recognize that MO West has affiliates that compete with it for capital. In my
9 opinion, Evergy should choose projects between its Missouri electric utility operations and
10 Kansas electric utility operations based on economic efficiency rather than which
11 jurisdiction awards the highest ROR. The allowed ROE for Evergy’s Kansas electric utility
12 operations is 9.3%. Evergy’s Kansas earnings sharing mechanism with its Kansas
13 ratepayers assumes its capital structure is supported by 50% common equity.²

14 **FAIR RETURN ON COMMON EQUITY**

15 **Q. How did you determine the approach you would take to estimate a fair and reasonable**
16 **allowed ROE for purposes of this case?**

17 A. I reconciled the principles established in *Hope* and *Bluefield*³ with modern financial models
18 used to estimate the COE. While setting the allowed ROE based on the COE is at least
19 theoretically sufficient to allow a company to attract capital in efficient markets, because
20 average allowed ROEs have been set higher than the COE, this fact must be considered
21 when determining a fair and reasonable allowed ROE. In fact, this Commission has set a
22 “zone of reasonableness standard”⁴ for purposes of setting an allowed ROE with the
23 starting point for this zone of reasonableness being a recent industry average allowed ROE.

¹ SB 564 resulted in the creation/modification of several Sections of Chapter 393 with the primary new subsection being Section 393.1400, RSMo.

² Docket No. 18-KCPE-095-MER, Order Approving Merger, Attachment A, pgs. 18-19, May 24, 2018.

³ *Federal Power Commission v. Hope Natural Gas Co.*, 320 U.S. 591, 64 S.Ct. 281, 88 L.Ed. 333 (1943); *Bluefield Water Works & Improvement Co. v. Public Service Commission of West Virginia*, 262 U.S. 679, 43 S.Ct. 675, 67 L.Ed. 1176 (1923).

⁴ *State ex rel. Missouri Gas Energy v. Public Service Commission*, 186 S.W.3d 376, 383 (Mo App. W.D. 2005)

1 Considering these principles, I first estimate MO West’s current COE, then compared my
2 current COE estimates to those I estimated in recent rate cases to determine if there has
3 been a fundamental change in the cost of capital. My analysis also includes consideration
4 of other recently authorized ROEs with specific consideration given to Evergy’s allowed
5 ROE of 9.3% for its Kansas electric utility operations.

6 **Q. Based on your analysis, what is your estimate of MO West’s COE?**

7 A. 7% to 7.5%.

8 **Q. Based on your analysis and awareness of capital market conditions, investor**
9 **expectations and recent average allowed ROEs for electric utilities, what do you**
10 **consider to be a fair and reasonable allowed ROE for MO West’s electric utility**
11 **operations?**

12 A. 8.5% to 9.5%. Based on recent average authorized ROEs of approximately 9.35%,⁵ 8.35%
13 is approximately the lowest ROE that the Commission would consider under its “zone of
14 reasonableness” standard, while an awarded ROE below 9.5% would recognize the decline
15 in the COE since the Commission first deemed a 9.5% ROE as fair and reasonable for MO
16 West and Metro in 2015. After considering my COE estimates, the Commission’s
17 authorized ROE for Empire and the authorized ROE for Evergy’s Kansas electric utility
18 operations, I consider the mid-point of my range, 8.5% to 9.5%, to be fair and reasonable.

19 **Q. How did you inform yourself for purposes of determining the best methods and**
20 **approaches to use to estimate MO West’s COE?**

21 A. For purposes of this case, I reviewed Evergy’s Board of Directors (“BOD”) strategic
22 financing and investment considerations since February 1, 2020, as well as equity
23 investment research reports covering Evergy and the utility industry for a similar period.
24 After performing this research, I estimated MO West’s COE by performing a company-
25 specific COE analysis on Evergy, as well as a COE analysis on a broad electric utility

⁵ RRA Major Rate Case Decisions Quarterly Updates, May 2, 2022.

1 industry proxy group, with emphasis on companies within this broad group that are more
2 concentrated in regulated utility operations .

3 **Q. What specific COE models did you use?**

4 A. I used a multi-stage discounted cash flow (“DCF”) method, with specific emphasis on
5 consensus analysts’ estimated dividends and the modeled growth of dividends. When the
6 DCF method is applied to dividends as the proxy for cash flow, it is more specifically
7 defined as the dividend discount model (“DDM”). I also applied the Capital Asset Pricing
8 Model (“CAPM”) to both Evergy and the proxy groups. Finally, I performed simple and
9 logical reasonableness checks to test the reasonableness of my COE estimates. These
10 reasonableness checks recognize the basic characteristics of utility stocks, mainly being
11 that they are perceived as yield/income investments by the investment community. One
12 such reasonableness check is a straight-forward bond-yield-plus-risk-premium (“BYPRP”)
13 method included in the Chartered Financial Analyst (“CFA”) Program curriculum.⁶

14 **Q. Can you describe current capital market conditions as it relates to the electric utility
15 industry in general and Evergy specifically before you discuss the details of how you
16 specifically estimated MO West’s COE?**

17 A. Yes. This information should help provide some context as to the current state of utility
18 capital markets and what this implies about the trend in capital markets over approximately
19 the last decade when long-term interest rates entered into a prolonged period of lower levels
20 with a declining trend.

21 **Q. Did you sponsor ROR testimony in MO West’s 2018 rate case?**

22 A. No, but I supervised the Staff witness, Jeffrey Smith, who did.

⁶ 2021 CFA Program – Level II Refresher Reading, Equity Valuation, p. 35.

1 **Q. What about MO West rate cases prior to the 2018 rate case?**

2 A. I sponsored ROR (both capital structure and ROE) testimony in MO West’s 2016 rate case.
3 In the 2014 rate case, I supervised the Staff witness, Zephania Marevangepo, who directly
4 sponsored the ROR testimony. Prior to the 2014 rate cases, I directly sponsored ROR
5 testimony in MO West’s rate cases (see Schedule DM-D-1).

6 **Q. What ROE have you recently recommended the Commission authorize for its large**
7 **electric utilities?**

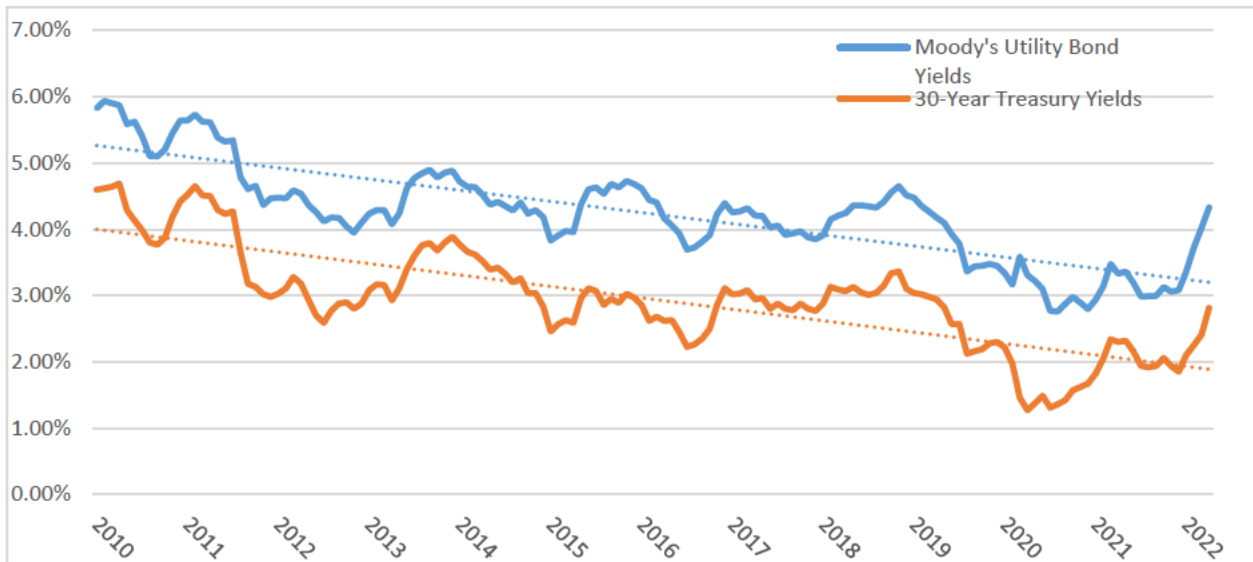
8 A. I had consistently recommended the Commission reduce its electric utility authorized ROE
9 from around 9.5% to 9.25%. The Commission’s last authorized ROE for MO West was
10 9.7% in the 2012 rate case, Case No. ER-2012-0175. The Commission’s last authorized
11 ROE for Metro was 9.5% in the 2016 rate case, Case No. ER-2016-0285, which was
12 consistent with the Commission’s authorized ROE for Metro in its 2014 rate case, Case
13 No. ER-2014-0370. In the most recent Empire and Ameren Missouri electric rate cases, I
14 recommended the Commission further reduce authorized ROEs to 9.0%. Although the
15 COE has varied over much of the period since 2014, with a generally overall declining
16 trend until recently, I had consistently urged the Commission to lower the authorized ROE
17 for its electric utilities by at least 25 basis points to recognize the decline in the costs of
18 capital.

19 **Q. How do current investment grade utility bond yields compare to investment grade**
20 **utility bond yields over the past decade?**

21 A. They are higher than yields over the last three years, similar to yields since around 2015,
22 and generally lower than yields prior to 2015.⁷ The below graph shows long-term bond
23 yields since January 1, 2010, which captures the prolonged period of lower long-term
24 interest rates post the recession/financial crisis of 2008/2009. While the early stages of
25 lower long-term interest rates in the first half of this decade were considered by some as
26 potentially anomalous because of the Federal Reserve Bank’s (“Fed”) quantitative easing

⁷ S&P rates MO West and Metro at A-; Moody’s rates MO West and Metro at Baa2 and Baa1, respectively.

1 (“QE”) programs⁸ through the end of 2013, since that time, long-term interest rates
2 continued a declining trend through 2021. Although long-term rates have increased
3 significantly in recent months, they are still low based on historical standards over the last
4 40+ years.



5
6 Average utility long-term bond yields dropped to modern all-time lows in the latter half of
7 2020 - levels not experienced since the late 1940s and early 1950s (I am not aware of a
8 publication at the time, such as Regulatory Research Associates, that would provide
9 information on allowed returns to provide guidance for current decisions). However, due
10 to inflationary concerns, the Fed's communicated path of moderating to potential
11 tightening of monetary policy, and recession fears, long-term bond yields have increased
12 in recent months.

13 **Q. Why is it important to evaluate trends in long-term interest rates when evaluating the**
14 **utility industry's COE?**

15 **A.** Investors typically view utility stocks as a close alternative to bond investments. In fact,
16 the investment community estimates fair prices of utility stocks based on regressions to

⁸ QE involved three rounds of the Fed's direct intervention in bond markets beyond just lowering the Fed Funds rate. The Fed's QE programs had the express intent of reducing long-term interest rates.

1 bond yields.⁹ Utility stocks are often referred to as bond-substitutes or pseudo bonds.
2 Therefore, changes in utility stock valuation levels typically have a strong inverse
3 correlation to changes in bond yields, i.e. as bond yields decline, utility stock prices
4 increase.

5 **Q. Since April 2020, have utility stock valuations and bond yields provided traditional**
6 **and consistent signals about utilities' cost of capital?**

7 A. No. Utility and corporate bond yields have declined significantly since even before the
8 pandemic, which were already trading at yields-to-maturity (“YTM”) that were at 60-year
9 lows. During most of the post-pandemic months in 2020, utility and corporate bonds were
10 trading at YTM that were at 70-to-80 year lows. However, electric utility stocks' valuation
11 levels (as measured by P/E ratios) declined on both an absolute and relative basis (as
12 compared to the S&P 500) through most of 2021. However, during recent months, in
13 which long-term yields have been increasing, electric utility stock valuation levels have
14 also been increasing. The impact of Covid-19 on economic conditions, fiscal policy and
15 monetary policy has caused unique capital market conditions over the last two years.

16 During the all-time low bond yield environment, the utility industry was able to take
17 advantage of these extremely low debt capital costs. For example, Evergy Missouri West
18 was able to issue several bonds on April 20, 2021, for a weighted average coupon of slightly
19 less than 3%. However, during this period, utility equity valuation levels had not increased
20 in conjunction with the decline in bond yields, which certainly implied investors did not
21 expect extremely low interest rates to be sustainable. Between this factor and investors'
22 concerns about a potential recession, this at least partially explains why utility stock
23 valuation levels have not only been sustained in recent periods, but once again trade at a
24 premium to the S&P 500.

⁹ Julien Dumoulin-Smith, et. al, “Utilities Macro: Closing The Valuation Gap At Last, But Can It Go Further?,”
January 25, 2022, Bank of America Merrill Lynch. Jeremy Tonet, CFA, et. al., “Thoughts Into 4Q Earnings: Under
Pressure From Weather, But Utes Won’t Back Down,” February 1, 2022, JP Morgan.

1 **Q. Can you provide a graphic illustration of the electric utility industry’s price-to-next-**
2 **twelve-months-earnings (P/E) ratios since January 1, 2012?**

3 A. Yes. First, I should note that P/E ratios are often used to evaluate the relative cost to the
4 investor to buy a share of earnings and the potential growth of those earnings. Also, for
5 context regarding the favorableness of utility P/E ratios over the past several years, utility
6 P/E ratios averaged 14.4x since 1995.¹⁰ A graph of the P/E ratios for electric utility industry
7 follows:



8
9 As can be seen in the above graph, the electric utility industry briefly achieved a
10 P/E ratio of around 22.5x at April 8, 2022. Electric utility P/E ratios had not been at this
11 level since they hit all-time highs in February 2020. At that time I had recommended the
12 Commission authorize Empire an ROE of 9.25% based on low implied COE estimates.
13 The Commission subsequently authorized Empire an ROE of 9.25% based on Staff’s and

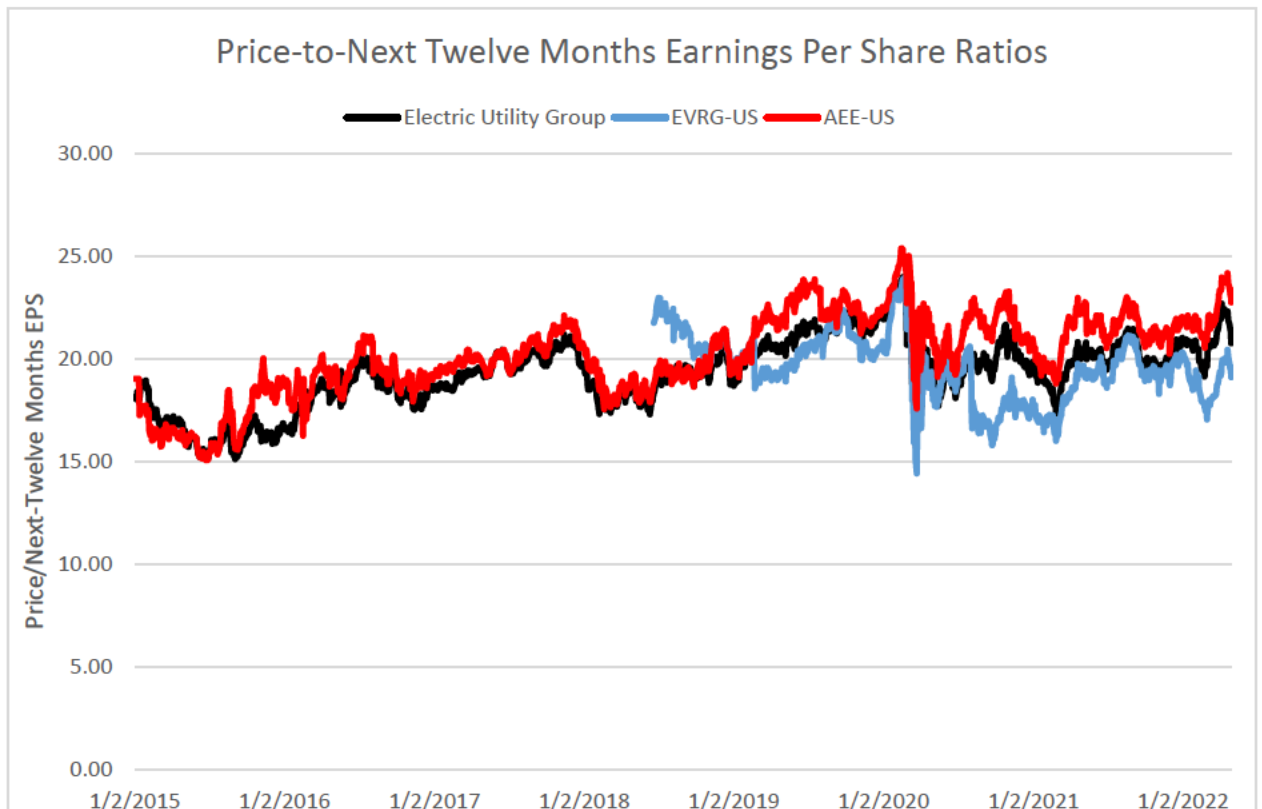
¹⁰ Durgesh Chopra, et. al., “Up & Up – Strong First Quarter Electric Demand,” Evercore ISI, April 10, 2022, p. 8.

1 OPC's recommendations. Over the last couple of years, the electric utility industry P/E
2 ratios have oscillated around 20x, which is a much higher average valuation level than in
3 2015 when the Commission first determined that a 9.5% allowed ROE was fair and
4 reasonable for Metro. Consequently, in my opinion, despite the recent increase in interest
5 rates, investors are continuing to place a premium on utility stocks. This evidence supports
6 awarding MO West an ROE below the 9.5% deemed fair and reasonable over seven years
7 ago.

8 **Q. Can you compare the electric utility industry's P/E ratios to Evergy and Ameren since**
9 **2015, when the Commission first deemed a 9.5% ROE fair and reasonable for these**
10 **companies?**

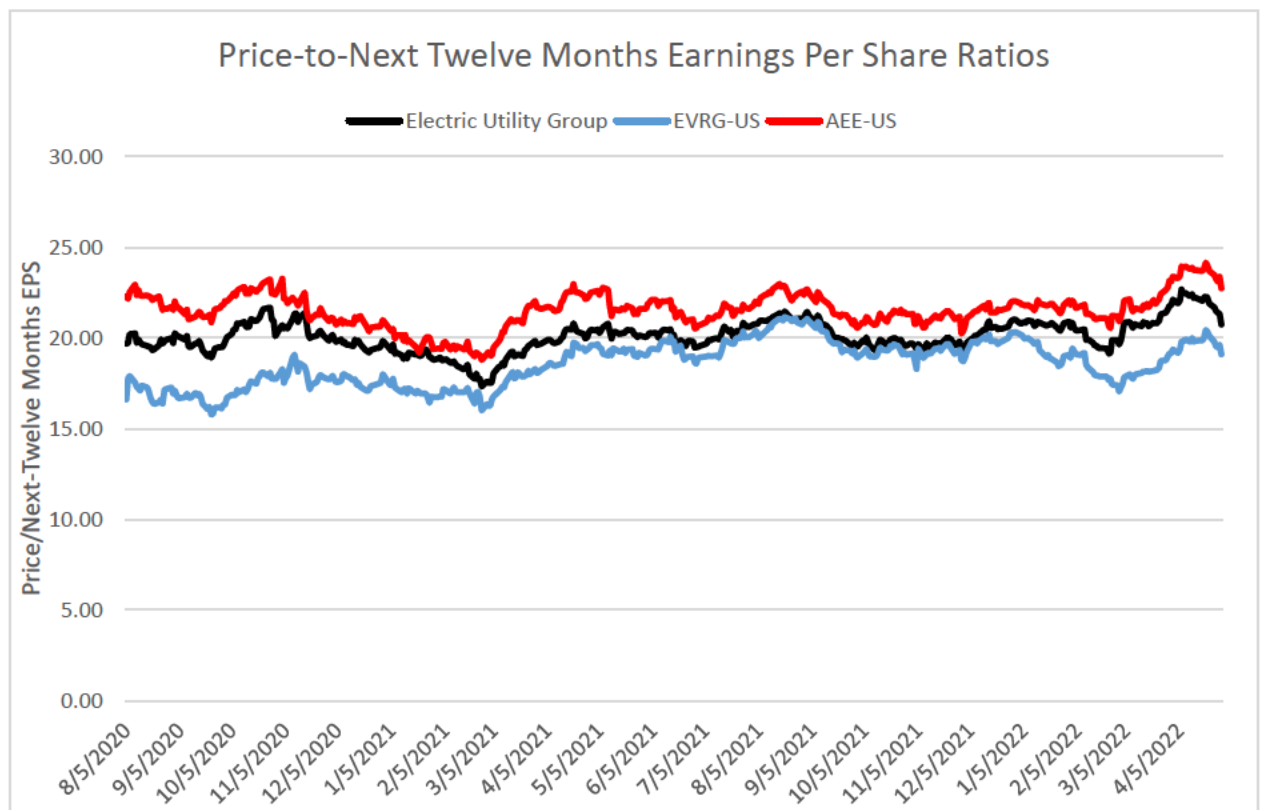
11 **A.** Yes for Ameren and the electric utility industry. However, market data for Evergy is only
12 available since June 4, 2018, which is when it was formed through the merger of Great
13 Plains Energy and Westar Inc. The chart follows:

14



15

1 As is evident from above, since the beginning of 2019, Ameren has typically traded at a
2 premium to the electric utility industry, whereas Evergy started trading at a premium when
3 it was first formed, but then traded at a discount for much of 2019. When Elliott
4 Management (“Elliott”) issued a January 21, 2020 public letter to Evergy’s BOD, Evergy’s
5 P/E ratio traded in line with the rest of the electric utility industry. On August 5, 2020,
6 when Evergy announced it would pursue a stand-alone strategy through its Sustainability
7 Transformation Plan (“STP”), its P/E ratio immediately declined by approximately 3x
8 (from around 20x to 17x). However, for most of 2021, Evergy’s discount to the electric
9 utility industry and Ameren has narrowed. The below chart compares Evergy’s P/E ratio
10 to the industry and Ameren since August 5, 2020:



12 Although Evergy’s P/E ratio had been trading consistent with the industry for most of 2021,
13 at the beginning of 2022 it began to trade at a consistent discount to the industry. This
14 implies that Evergy’s cost of capital may be slightly higher than the industry average and/or
15 there is less confidence in Evergy’s ability to grow its earnings and dividends consistent
16

1 with industry averages. Investors have been quite confident in Ameren’s expected earnings
2 and dividend growth. In fact, Ameren is considered by many investors as a “premium”
3 utility, which is assigned to a few select utilities such as Excel Inc., WEC Energy Group,
4 Alliant Energy, and CMS Energy. Evergy is striving to join this “premium” group.

5 Q. ** _____
6 _____
7 _____

8 A. _____
9 _____
10 _____
11 _____

12 _____ ** Under the STP, Evergy increased its capital expenditure budget by \$1.4
13 billion through 2024. Of this \$1.4 billion incremental increase over the original \$7.5 billion
14 plan, \$438 million is planned for Missouri jurisdictional investment, \$612 million for
15 FERC jurisdictional investment, and \$303 million for Kansas jurisdictional investment. Of
16 the \$3.3 billion total targeted for Missouri, \$2.9 billion is eligible for the plant in service
17 accounting (“PISA”) mechanism.¹¹ These investments contribute to Evergy’s increased
18 projected 5-year compound annual growth rate (“CAGR”) in EPS to 6-8% from 5-7%
19 previously.¹² ** _____
20 _____
21 _____ **

22 Q. **Can you provide some recent market commentary that supports your analysis and**
23 **commentary related to utility stock valuation levels, despite increasing long-term**
24 **interest rates?**

25 A. Yes. On May 5, 2022, the Wall Street Journal (“WSJ”) provided the following comments
26 about recent trading patterns in dividend paying stocks, which includes utilities:

¹¹ Sustainability Transformation Plan, August 5, 2020, p. 8.
¹² *Id.*, p. 11.

1 Investors seeking shelter from volatility are turning to a part of the markets that
2 had largely been overlooked last year: dividend-paying stocks.

3
4 Shares of companies paying big dividends to investors have trounced practically
5 everything else this year...

6
7 What's unusual about this year's rally in dividend-paying stocks is that it is the
8 opposite of what market convention says happens when interest rates rise.
9 Usually, investors say, dividend-paying stocks do poorly in a rising-rate
10 environment because rates typically go up when the economy is growing. In
11 boom times, investors tend to forgo the steady cash payments of bondlike stocks
12 in favor of companies that have the potential to deliver bigger profits later.

13
14 This time, a different dynamic is at play. Interest rates have risen swiftly, not
15 because investors are betting on an economic surge but because accelerating
16 inflation is forcing the Federal Reserve to act quickly to rein in price pressures.
17 Some investors worry the Fed's increases could cause a recession.

18
19 That has drawn investors into shares of big dividend payers, which promise to
20 deliver a steady stream of cash in the near term.

21
22 A bonus? Many dividend payers are in industries like utilities,
23 telecommunications and consumer staples, which consumers tend to rely on year
24 round, regardless of the economic environment.

25
26 That has made them especially attractive to investors who are worried the Fed
27 won't be able to combat inflation without significantly raising unemployment.¹³

28 Between the spring of 2000 (the onset of the Covid-19 pandemic) until the end of 2021 and
29 early 2022, utilities had been trading at a discount relative to the S&P 500, as compared to
30 the premium they traded to the S&P 500 for most of the past decade prior to the Covid-19
31 pandemic. In response to the Covid-19 pandemic, the United States' Federal Reserve Bank
32 (i.e. monetary policy) and the United States' government (i.e. fiscal policy) initiated
33 aggressive policies to counteract economic and market concerns that may be caused by
34 Covid-19 and the measures instituted to mitigate its spread. The rapid increase in S&P 500
35 valuation ratios relative to the utility industry's valuation ratios suggested that the
36 aggressive monetary and fiscal policy increased investors' optimism and risk appetite.
37 However, this quickly changed as a result of inflationary concerns, which caused the Fed

¹³ Akane Otani, "Investors Find Safety in Overlooked Stocks That Pay Dividends," Wall Street Journal, May 6, 2022, pages B1 and B11.

1 to communicate its intent to transition to tighter monetary policy, and even potential
2 restrictive conditions, in order to gain control of inflationary pressures caused by consumer
3 demand.

4 **Q. Can you provide commentary that specifically addresses the utility industry?**

5 A. Yes. A WSJ article published on May 16, 2022, provided further insight on the current
6 state of utility capital markets as they related to past absolute performance and relative
7 performance to the S&P 500:

8 Rising interest rates and inflation are typically a circuit breaker for richly valued
9 utility stocks, but these are unusual times.

10
11 The sector is the second-best performing one in the U.S. behind energy year to
12 date, trouncing the S& P 500 by 15 percentage points through Friday. That leaves
13 utility stocks trading at almost 20 times forward 12-month earnings on average—
14 close to a high and nearly a fifth richer than the S& P 500. The last time utilities
15 fetched such a premium was during the market panic in March 2020. The staid
16 sector typically traded at a slight discount to the broader index over the past
17 decade...

18
19 ...Still, the sector's rally is something of an anomaly given the macroeconomic
20 environment. Utility stocks tend not to take well to rising interest rates for two
21 reasons: First, utilities have large debt burdens, with those in the S& P 500 on
22 average carrying net debt that is more than five times earnings before interest,
23 taxes, depreciation and amortization, according to S& P Global Market
24 Intelligence. Second, they are a bond substitute. When interest rates rise, utilities'
25 dividend yields start looking less attractive compared with Treasurys. At one
26 point during the early-2020 recession, the dividend yield on utility stocks was
27 nearly 4 percentage points higher than the yield on 10-year Treasury notes. That
28 edge is now 0.17 percentage point.

29
30 In addition, high inflation tends to be bad news for utilities. When inflation starts
31 pushing up overall costs for households, it becomes harder to persuade utility
32 regulators to grant higher rates. Regulators are typically either appointed by
33 governors or elected, so they aren't immune to the sentiments now prompting
34 politicians to blame companies—ranging from oil producers to supermarket
35 chains— for causing consumer pain...

36
37 ...With investors seemingly finding new worries around every corner lately, the
38 forces holding the rest of the market back can make utilities look like a hidden

1 jewel one moment and a lump of expensive coal in the next. In a softening stock
2 market, these power lines are starting to look stretched.¹⁴

3 Although the COE has increased for the broader markets, because utility stocks P/E
4 ratios are close to their all-time high levels shortly before the pandemic, this information
5 supports my position that the absolute level of the utility industry’s COE has not changed
6 much relative to bond yields, meaning utility equity risk premiums over current higher
7 bond yields are lower than they were when bond yields were lower. My multi-stage
8 DCF analysis corroborates this view. Because a DCF analysis directly incorporates
9 utility stock prices, it is generally the most reliable method to determine company-
10 specific or industry-specific risk premiums (assuming reasonable growth rate
11 assumptions).

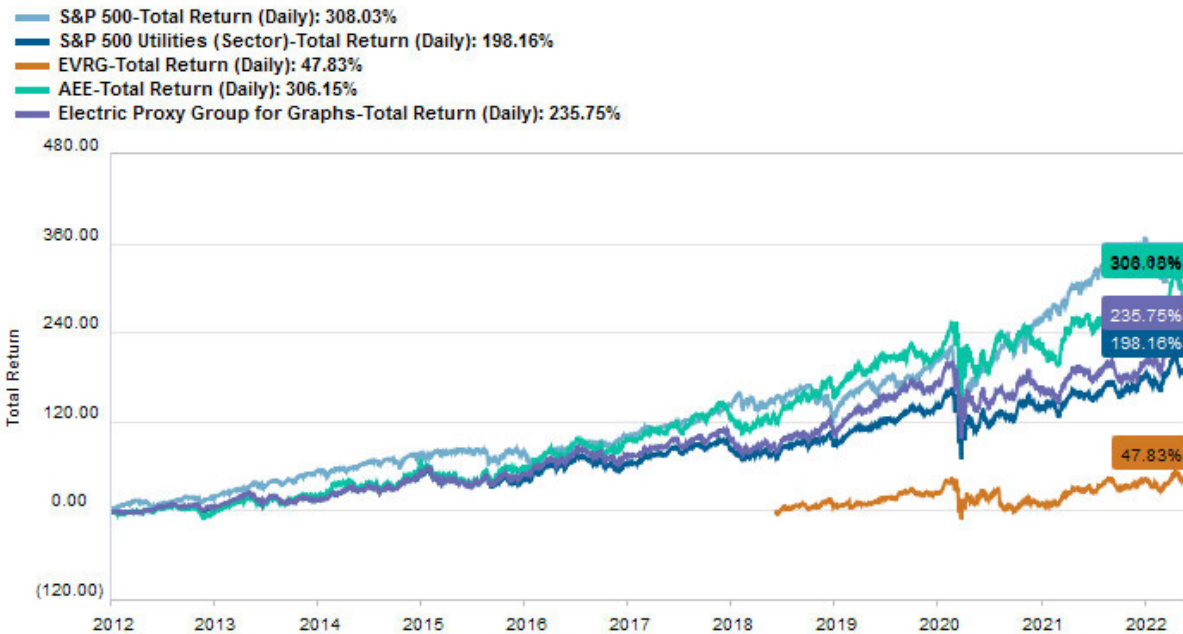
12 **Q. What are utility equity investors’ reactions to the rising rate environment?**

13 A. Based solely on interpreting/evaluating utility stock price changes, they consider the safety
14 of the non-elasticity in demand and the ability of utilities to increase rates because of
15 inflation’s impact on their cost of service to currently be more attractive than the
16 opportunity cost of higher yields offered on bonds. However, as I mentioned earlier, utility
17 equity analysts consistently compare the valuation levels of utility stocks to corporate bond
18 yields to determine if they consider them underpriced, fairly priced or overpriced. Until
19 recently, most utility equity analysts had projected that low interest rates justified at least
20 a gradual reduction of authorized ROEs. However, if the recent increases in long-term
21 rates are sustained, then many Wall Street stock analysts expect that regulators may at least
22 hold the line on awarded ROEs.

¹⁴ Jinjoo Lee, “Utility Stocks Keep Their Spark – *Sector isn’t cheapest place to park money, but there are few alternatives*,” Wall Street Journal, May 16, 2022, p. B11.

1 **Q. Can you provide information on how Evergy’s shareholder returns have compared**
2 **to its peers, Ameren and the S&P 500?**

3 A. Yes. See the below chart for a graphic illustration of Evergy’s total return as compared to
4 an electric utility proxy group, EEI’s Broad Electric Utility Proxy Group, Ameren, and the
5 S&P 500.

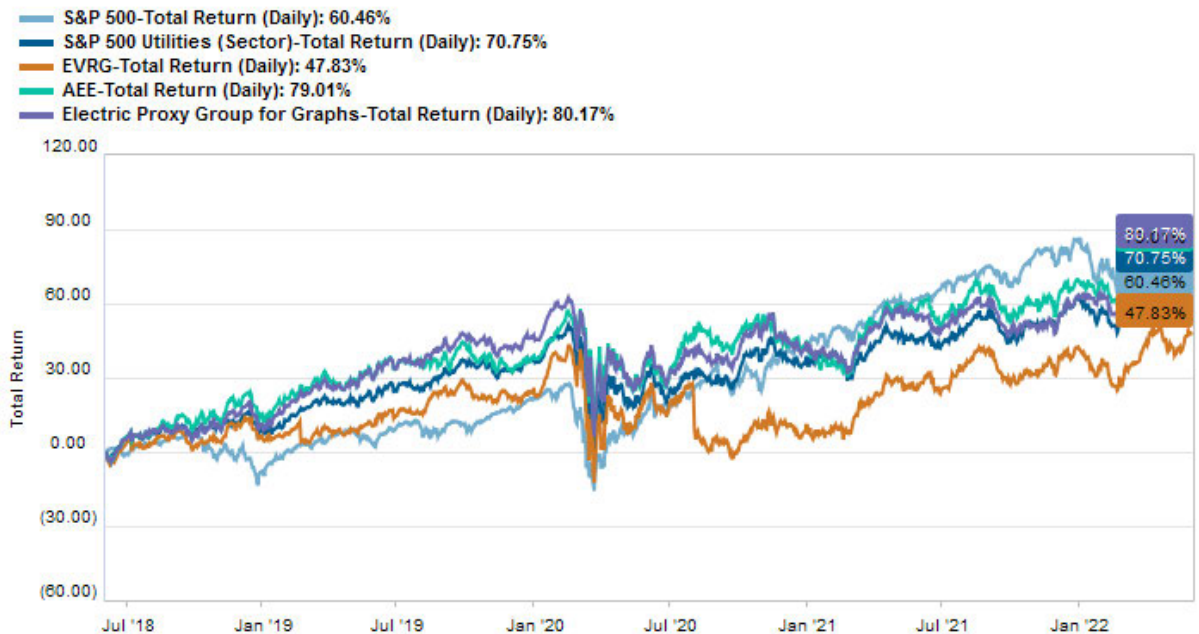


7 Although I included Evergy in the above graph, its performance is not comparable in the
8 above chart due to the fact that its stock didn’t start trading until June 2018. The key
9 takeaways from the above chart is the fact that until the pandemic, the electric utility
10 industry achieved total returns similar to the S&P 500 despite the fact that they are not
11 expected to achieved capital gains similar to growth stocks. This is largely due to the
12 sustained long-term decline in interest rates over this period, which also caused higher
13 capital gains for bond investments. Being that bond coupons are typically fixed, this
14 clearly demonstrated that yield investments achieved capital gains mainly due to a decline
15 in long-term yields. However, post the pandemic, and more importantly post the response
16 of the Federal Reserve and the U.S. Congress to support the economy during the pandemic,
17 aggressive stimulus measures caused the S&P 500 to significantly outperform the electric

1 utility industry. This is largely attributed to the Fed providing a tremendous amount of
2 capital market support, which caused real bond yields to be negative during much of this
3 period. This had the impact of reducing the discount rates (i.e. COE) for the broader
4 markets, which made potential future profits worth more in present value terms. However,
5 since inflation has become a major concern of the Fed, it is now planning a fairly aggressive
6 path to transition to at least neutral monetary policy, if not tightening, which may cause a
7 recession. This explains why utility stocks have performed much better than the S&P 500
8 since the beginning of 2022.

9 The total returns shown in the chart above convert into the following compound annual
10 returns for Ameren Corp, Electric Proxy Group, S&P Utilities, and the S&P 500,
11 respectively: 11.17%, 8.25%, 6.29%, and 10.49%.

12 The following chart compares Evergy to Ameren and the other groups/indices since
13 Evergy's stock began trading:



16 As can be seen, Evergy's returns have underperformed Ameren, the electric industry, and
17 the S&P 500. Evergy's compound annual total return has been 9.04% for approximately

1 the past four years, where the annual total returns for Ameren, the electric utility industry,
2 the S&P Utilities and the S&P 500 have been, 15.88%, 15.70%, 13.54% and 11.18%,
3 respectively. Evergy's underperformance can be largely explained by the uncertainty of
4 Evergy's situation for much of 2020 (evaluation of standalone strategy versus merger) and
5 investors evaluating whether new management and BOD changes will be able to execute
6 the current STP.

7 **Q. What are recent implied yields on Metro's and MO West's long-term debt?**

8 A. Unfortunately, MO West's long-term debt is privately placed so there is no implied yield
9 information on its debt. However, Metro's long-term debt is registered with the SEC and
10 trades over-the-counter. Therefore, pricing information is available on its debt. Recent
11 information on Metro's debt indicates that its long-term debt is yielding approximately
12 4.65%, which is a much higher cost than it has consistently experience over the past several
13 years (absent the short-term spike in yields at the onset of the Covid-19 pandemic).

14 **COST OF EQUITY METHODS**

15 **Q. Now that you have provided some context on changes in utility capital market**
16 **conditions generally and Evergy specifically, can you discuss how you decided to**
17 **approach your COE estimate for MO West and Metro in this case?**

18 A. Yes. I performed a company-specific COE analysis on Evergy as well as a proxy group
19 COE analysis. I used a multi-stage DCF approach and a CAPM. I then tested the
20 reasonableness of my estimates by using simple, straightforward sanity checks, such as the
21 straight-forward bond-yield-plus-risk-premium ("BYPRP") method discussed in the CFA
22 curriculum.

23 **Q. How have you informed yourself as to reasonable and rational inputs for your COE**
24 **approaches?**

25 A. Being that the objective of a ROR witness is to emulate investors' approaches to analyzing
26 and making investment recommendations as it relates to investing in utility stocks, I have

1 made it a priority to review and analyze how equity research analysts determine a utility
2 stock price estimate in practice. This has allowed me to test the theory of cost of capital
3 estimation in utility ROR testimony as it compares to how utility stocks are actually valued.
4 I have discovered investment analysts do use multi-stage DCF approaches to estimate
5 fundamental values of utility stocks, and/or they use relative valuation techniques that
6 compare a company's P/E ratios to averages for the industry and/or potentially a more
7 tailored subset of peer companies. In my experience, professional equity ("Wall Street")
8 analysts project long-term CAGR in EPS to determine whether a company's P/E ratio
9 deserves a premium or a discount to its peers. Wall Street analysts DO NOT use these
10 estimated long-term CAGRs in EPS for purposes of projecting a perpetual dividend growth
11 rate, as some ROR witnesses suggest. When performing an absolute valuation analysis,
12 such as a DCF/DDM, Wall Street analysts assume rational perpetual growth rates in the
13 2.5% to 3.3% range for electric utility companies. Finally, and most relevant to the task at
14 hand, they estimate utilities' COE to be in the 5-6% range.¹⁵

15 **Q. What equity research firms cover Evergy's stock?**

16 A. According to Evergy's website, the following firms cover its stock: Argus Research
17 Corporation, Bank of American Merrill Lynch ("BAML"), Evercore ISI, Goldman Sachs,
18 Guggenheim Securities, Morningstar, UBS Equities, Value Line, Wells Fargo Securities,
19 and Wolfe Research ("Wolfe").¹⁶

20 **Q. Why is it important to analyze this information to determine a fair and reasonable**
21 **allowed ROE for Evergy?**

22 A. Analyzing this information is important because these Wall Street analysts are the very
23 individuals that underlie various consensus estimates widely considered by investors. ROR

¹⁵ Durgesh Chopra, et. al, "Top Ten Touches – Q1 2022 Investor Activity," May 30, 2022, Evercore ISI. Neil Kalton, Sarah Akers, and Jonathan Reeder, "DDM Analysis Supports Sector Valuation & Quality/Growth Trade," August 19, 2019, Wells Fargo.

¹⁶ [Analyst Coverage | Evergy, Inc.](#)

1 witnesses recognize the influence Wall Street analysts have on utility stock prices by the
2 very fact that they use consensus EPS forecasts for purposes of estimating the COE.

3 **Q. Did you review any of these firms' research for purposes of performing your cost of**
4 **equity analysis and preparing your testimony?**

5 A. Yes. I mainly relied on reports Evergy provided in response to Staff Data Request No.
6 0129. However, over my career I have established relationships with some firms/analysts
7 who have distributed this material to me directly through their email distribution lists.
8 These relationships were borne from my role as a regulator in which many of these analysts
9 seek information related to Missouri's general and specific regulatory issues. I have also
10 interacted with these analysts through my participation in organizations, such as the Society
11 of Utility and Regulatory Analysts ("SURFA").

12 **Q. How did you approach the multi-stage DCF/DDM analysis you performed on**
13 **Evergy?**

14 A. Schedule DM-D-2 attached to my testimony illustrates the primary logic and assumptions
15 I used in my multi-stage approach. For the first stage, I used consensus analysts' estimates
16 for dividend per share ("DPS") through 2026. Evergy's consensus dividend payout ratio
17 is projected to be 67.51% in 2026. Evergy's targets a dividend payout ratio in the range of
18 60% to 70%.¹⁷ I assume Evergy's payout ratio will continue at 67.51% for a 10-year
19 transitionary stage (2026 through 2036). Consequently, both Evergy's DPS and EPS
20 annual growth rates gradually decline to my assumed perpetual sustainable growth rate in
21 the range of 2.5% to 3.5%. Based on a terminal expected ROE of 9.25%, this results in
22 terminal dividend payout ratios in the range of 62.16% (3.5% perpetual growth rate) to
23 72.97% (2.5% perpetual growth rate). My range of assumed perpetual growth rates range
24 are consistent with the assumed rates used by Evercore ISI¹⁸ and ** _____
25 _____

¹⁷ Sustainability Transformation Plan, August 5, 2020, p. 11.

¹⁸ *Id.*

¹⁹ Evergy's response to Staff Data Request No. 127.

1
2
3
4
5
6
7
8
9
10
11
12
13
14
15
16
17
18
19
20
21
22
23
24
25

**

Q. Can you provide some additional explanation as to the rationale underlying your assumed growth rates for Evergy?

A. Yes. Through recent investment communications and actions, Evergy has signaled that it plans to increase its dividend in line with its long-term CAGR in EPS guidance of 6% to 8%.²⁰ Evergy has also communicated to investors that it plans to increase rate base at a CAGR of approximately 5% to 7% through 2024 by investing \$8.9 billion.²¹ Although Evergy has communicated it will likely have additional investment opportunities beyond 2024 due to the transition to renewable generation, these ramped up investment programs are finite and will eventually return to a maintenance level of capital investment, similar to investment before the STP initiative and PISA authority. Once the Company achieves this steady state, then it should gravitate toward a dividend payout ratio that ensures it will have sufficient internal equity capital to fund its investments (i.e. a sustainable growth rate). Assuming a 3% perpetual growth rate and a 9.25% perpetual ROE, Evergy would need to target a dividend payout ratio of 67.57% to retain sufficient capital to avoid issuing new common equity (i.e. sustainable growth).

Q. What does industry data suggest is a sustainable growth rate for a predominately regulated electric utility company, such as Metro and MO West?

A. I reviewed past actual historical industry growth rate data from the Moody's electric utility index,²² a sample group of electric utility companies in which data was available from Value Line,²³ and commentary/analysis available from institutional investors/analysts.²⁴ This information supports a perpetual growth rate in the range of 2.5% to 3.5%. A perpetual growth rate within this range is also consistent with the "sustainable growth model," which estimates EPS growth by multiplying an average long-term industry

²⁰ Sustainability Transformation Plan, August 5, 2020, p. 11.

²¹ *Id.*

²² Staff Cost of Service Report, Case No. ER-2011-0028, p. 18.

²³ *Id.*

²⁴ Discussed throughout this testimony.

1 retention rate by an expected book ROE. Assuming the utility industry reverts to its long-
2 term earnings retention rate of approximately 30% and allowed ROEs are eventually
3 lowered to compress the spread between the COE and the allowed ROE, this supports a
4 2.8% perpetual growth rate if investment opportunities are available (9.25% allowed ROE
5 multiplied by 30%).

6 **Q.** ** _____
7 _____
8 _____

9 **A.** _____
10 _____
11 _____
12 _____
13 _____
14 _____

15 _____ **25

16 **Q. How does this compare to perpetual growth rates used by equity analysts to estimate**
17 **fair prices for utility stocks?**

18 **A.** This is fairly consistent with the perpetual growth rates used for purposes of estimating
19 utility stock prices. For example, Evercore ISI uses a perpetual growth rate of 2.5% in its
20 3-stage DDM analyses of electric utility stocks.²⁶ Wells Fargo uses an average perpetual
21 growth rate of around 3%.²⁷

22 **Q. How do these growth rates compare to how Metro’s and MO West’s rate base growth**
23 **since 2010?**

24 **A.** Based on Metro’s and MO West’s estimated rate bases through the true-up period in this
25 case, the CAGR in their rate bases were 4.06% and 3.19%, respectively. For comparison,

²⁵ Evergy’s Strategic Review Operating Committee Materials, p. 17/181 (Confidential Schedule DM-D-3).
²⁶ *Id.*
²⁷ *Id.*

1 through the true-up period in Metro’s and MO Wests’ 2018 rate case, June 30, 2018, the
2 CAGR in their rate bases were 3.45% and 1.09%, respectively.

3 **Q. What cost of equity did you estimate for Evergy using the multi-stage approach?**

4 A. Using Evergy’s stock prices since January 1, 2022, and discounting prospective dividends
5 by reasonable growth rates in the intermediate future as well as perpetually, the implied
6 COE for Evergy is approximately 7.45% to 7.75% (see Schedule DM-D-2). Given that
7 this COE estimate assumes Evergy can achieve CAGR in EPS of 5.34% for approximately
8 the next 10 years, I consider this COE estimate to be higher than likely. Additionally, as I
9 explained earlier in my testimony, Evergy has been in a state of strategic transition, which
10 has caused some noise in its stock price. I do not consider this noise to be due to business
11 risks associated with Evergy’s regulatory environments. Therefore, this COE estimate will
12 be the basis for the upper end of my estimated COE range.

13 **PROXY GROUP COST OF EQUITY**

14 **Q. Should you compare your estimate of Evergy’s company-specific COE to the COE of**
15 **a proxy group of other regulated electric utilities?**

16 A. Yes. Investors frequently evaluate the attractiveness of a utility company’s share price by
17 comparing it to the average of a peer proxy group, whether it’s based on a broader utility
18 index or a custom proxy group.

19 **Q. How did you approach selecting a custom proxy group for purposes of comparing**
20 **Evergy’s COE versus its peers?**

21 A. I decided to analyze a broad proxy group of utilities classified as “regulated” and “mostly
22 regulated” utilities by the Edison Electric Institute (“EEI”).²⁸ Although I estimated a COE
23 based on this broad electric proxy group, I also reviewed the companies EEI classifies as
24 “regulated,” but even these companies may have non-regulated operations that contribute
25 to volatility to earnings and/or cash flows. Therefore, I reviewed the various business

²⁸ EEI classifies companies as “Regulated” if at least 80% of their assets are dedicated to regulated utility operations.

1 segments of each of these companies to determine which generally have less than 10% of
2 their operations exposed to competitive and international markets, which was 19
3 companies. I also analyzed a subset of the EEI companies I have consistently followed in
4 electric rate cases since 2012 (I use this group for the charts included in my testimony).

5 **Q. Did you perform a multi-stage DCF analyses on these companies?**

6 A. Yes. I applied the same principles as I did when applying the multi-stage DCF to Evergy.
7 For the first stage (May 31, 2022 through June 30, 2026) I used Wall Street analysts'
8 consensus DPS estimates to the extent they were available. For the second stage (June 30,
9 2026 through June 30, 2036), I allowed for a gradual decline from Wall Street analysts'
10 projected 5-year CAGR in EPS to a sustainable perpetual growth rate of 3% starting in
11 June 30, 2036. In order to estimate investors' anticipated annual DPS over the second
12 stage, I determined consensus analysts' estimated dividend payout ratios as of 2026. I then
13 allowed the dividend payout ratios to gradually converge to a sustainable payout ratio of
14 67.57% starting in 2036. This payout ratio is consistent with the constant/sustainable-
15 growth DCF theory that requires DPS, EPS and book value per share ("BVPS") to grow in
16 perpetuity at the same rate. This payout ratio is consistent with the proportion of earnings
17 utility companies should retain to sustain a 3% growth rate at a 9.25% book ROE.

18 My industry COE estimate based on application of the multi-stage DCF to the proxy group
19 indicates a COE in the range of around 7% to 7.25% (see Schedule DM-D-4, p. 1).

20 **Q. How does this COE estimate compare to your electric utility industry COE estimates
21 before the recent increase in interest rates?**

22 A. It is quite similar. As I explained in my testimonies in the recent Ameren Missouri and
23 Empire electric rate cases, utility stock prices did not exhibit the typical negative
24 correlation with the decline in interest rates during the Fed's easing of monetary policy in
25 response to the Covid-19 pandemic. This continues to be the case as the Fed has started to
26 transition to a potential tightening of monetary policy in response to inflationary pressures.
27 While the utility industry's debt costs have fluctuated along with the changes in broader
28 debt costs, the COE seems to have held fairly steady during these fluctuations.

1 **Q. If you had performed your multi-stage similar to how you did so when with Staff,**
2 **what COE would you have estimated?**

3 A. My estimate would have generally been below 7% (see Schedule DM-D-5). The higher
4 COE estimate using my current approach is mainly due to the fact that adjusting the
5 dividend payout ratio for a sustainable stage recognizes that dividends will increase faster
6 than EPS during the transition period. However, in order to ensure that DPS, EPS and
7 BVPS grow in equilibrium in the terminal stage, my current method is consistent with the
8 assumptions of the constant-growth DCF and therefore should be used. Regardless,
9 because it is clear that the COE is much lower than allowed ROEs, I don't consider it
10 critical to narrow down the COE to a precise estimate. In my opinion, the fact that a
11 reasonable and logical COE estimate for the electric utility industry is much lower than
12 average awarded ROEs illustrates the reasonableness of my recommended authorized ROE
13 of 9.00%.

14 **Q. Are there any other models that investors typically use to estimate the utility**
15 **industries' COE?**

16 A. Yes. In my experience, many Wall Street analysts use the CAPM to determine a discount
17 rate, i.e. the COE, to apply to expected cash flows to the equity investor. The CAPM shows
18 the potential impact of changes in interest rates on the cost of capital. Although COE
19 estimates can be manipulated with the CAPM by using unreasonable market risk premium
20 estimates, fortunately there are a variety of authoritative sources that provide equity risk
21 premium estimates that can form the basis for a consensus view on reasonable risk
22 premium based on current capital market conditions. In fact, Evergy's own financial
23 advisors provided market risk premium estimates for purposes of evaluating whether to
24 pursue a stand-alone plan or a strategic acquisition. Considering the significance of this
25 decision on shareholder value, the financial advisors' estimates should be considered
26 extremely reliable because of the consequential nature of this significant strategic decision.

1 **Q. What is the underlying theory that supports the use of the CAPM to estimate the cost**
2 **of equity for utilities?**

3 A. The CAPM is based on capital market theory in which it is recognized that although the
4 total risk of a company and/or industry consists of market (“systematic”) risk and
5 asset/business-specific (“unsystematic”) risk, investors are only compensated for
6 systematic risk because holding a diversified portfolio allows the investor to avoid
7 unsystematic risk. Systematic risks are unanticipated events in the economy, such as
8 economic growth, changes in interest rates, demographic changes, etc., that affect almost
9 all assets to some degree. The required risk premium for incurring the market risk as it
10 relates to the investment/portfolio is determined by adjusting the market risk premium by
11 the beta of the stock or portfolio. The adjusted risk premium is then added to a risk-free
12 rate to determine the cost of equity. The CAPM is typically expressed in equation form as
13 follows:

$$K_e = R_f + \beta (RP_m)$$

14 Where: K_e = the cost of equity for a security;
15 R_f = the risk-free rate;
16 β = beta; and
17 RP_m = equity risk premium.
18
19

20 For purposes of my CAPM analysis, I relied on Duff & Phelps (D&P) recommended equity
21 risk premium of 5.5% provided as of December 8, 2020²⁹ and a range of realized historical
22 equity risk premiums of 4.92% (geometric historical mean for 1926 through 2021) to
23 6.36% (arithmetic historical annual mean for the period 1926 through 2021) derived from
24 data provided by Ibbotson Associates’ Stocks, Bonds, Bills and Inflation database.
25 Although each of these equity risk premium estimates use various methods and risk-free
26 rates to arrive at their final estimates, I do not consider any estimate outside these to be
27 consistent with the investment community’s “consensus.” One of the primary drivers of
28 using a higher market risk premium versus a lower market risk premium is due to whether
29 this market risk premium is applied to a normalized risk-free rate or a current risk-free rate

²⁹ <https://www.duffandphelps.com/insights/publications/cost-of-capital/duff-and-phelps-recommended-us-equity-risk-premium-decreased-december-2020>

1 (higher market risk premiums applied to lower current low risk-free rates). Long-term
2 expected nominal market returns for the S&P 500 are as low as 4.1% to 6.73%.³⁰
3 Therefore, market risk premiums in the 5.5% to 6.0% range may actually be excessive for
4 purposes of a CAPM analysis.

5 **Q. What does the beta represent in a CAPM analysis?**

6 A. Beta is statistically defined as the covariance of the returns on an asset (in this case an
7 individual stock or group of stocks) with the return on the S&P 500 divided by the variance
8 of the returns on the S&P 500. This statistical measure is intended to provide investors
9 with insight regarding expected volatility of a security (or portfolio of securities) as it
10 relates to market volatility. A beta of less than one implies less expected volatility than the
11 market with the trade-off of a lower expected return than the market. The reverse is
12 expected for a beta greater than one.

13 **Q. Did utility stock betas increase subsequent to the market disruptions at the onset of**
14 **the Covid-19 pandemic?**

15 A. Yes. At the time I drafted testimony for the Empire and Ameren Missouri 2019 rate cases,
16 electric utility 5-year stock betas had declined to quite low levels of around 0.55. At the
17 time I sponsored testimony for the Empire and Ameren Missouri 2021 utility rate cases,
18 electric utility 5-year stock betas had increased to around 0.80. Electric utility 5-year stock
19 betas are currently approximately 0.80 for the broad EEI proxy group and around 0.75 for
20 more pure-play regulated electric utilities. Specifically, Evergy and Ameren currently have
21 a current long-term beta of approximately 0.75. Because Evergy has only been trading
22 publicly since it was formed in the Westar and Great Plains Energy merger in 2018, its
23 long-term beta captures only four years of data, as compared to five years for the other
24 companies.

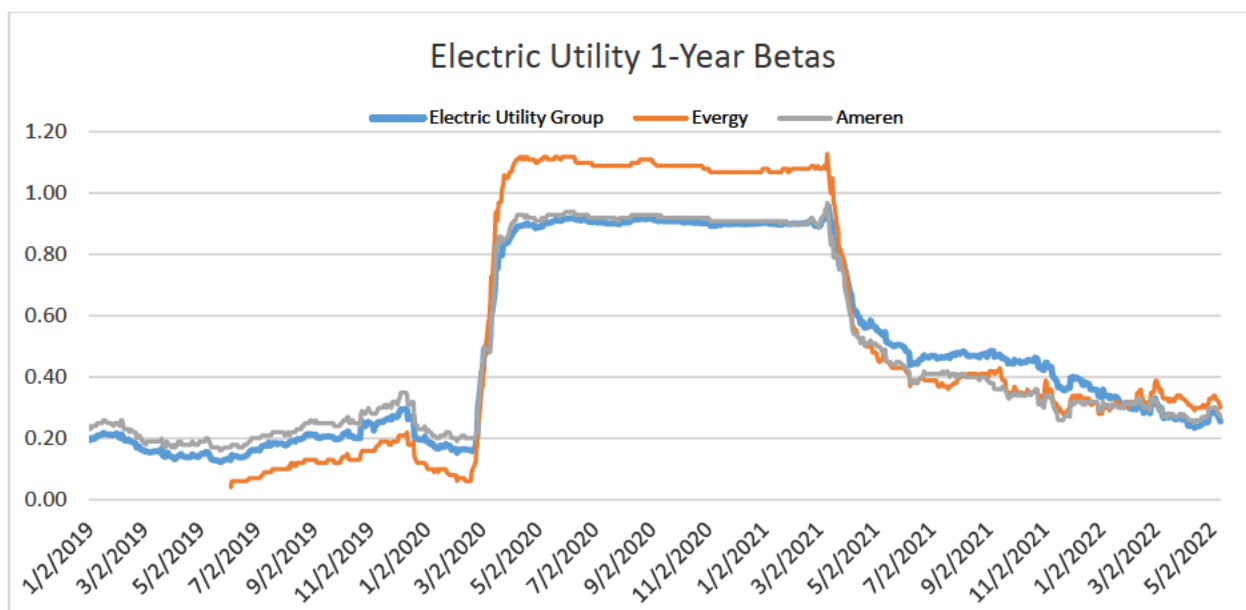
³⁰ First Quarter 2022 Survey of Professional Forecasters, Philadelphia Federal Reserve Board (Feb. 11, 2022), [First Quarter 2022 Survey of Professional Forecasters \(philadelphiafed.org\)](https://www.philadelphiafed.org/publications/survey-of-professional-forecasters) and John Bilton et al., *Executive Summary: 2022 Long-Term Capital Market Assumptions*, J.P.Morgan (Nov. 8, 2021), [2022 Long-Term Capital Market Assumptions Executive Summary \(jpmorgan.com\)](https://www.jpmorgan.com/markets/assumptions).

1 **Q. What was the primary cause of the increase in utility stock betas?**

2 A. The spike in utility stock betas occurred when the market plummeted at the onset of the
3 pandemic in March 2020. It is quite common for all securities, both higher-risk and lower-
4 risk securities, to move in tandem during significant market corrections. Because betas
5 measure the relative volatility of a company or a portfolio as it relates to the market, if all
6 securities rapidly decline at the same time, this causes all betas to converge toward one.
7 For example, the semiconductor equipment industry typically have betas that significantly
8 exceeds one. However, when all securities declined at the start of the pandemic, the
9 semiconductor equipment industry's betas decreased towards one. After the stock market
10 data associated with the synchronized decline of equity markets during March and April of
11 2020 began to drop off of 1-year beta calculations, the semiconductor equipment industry's
12 betas started to increase back to their normal higher levels.

13 **Q. How much have electric utility one-year raw betas changed over the last couple of**
14 **years due to the market contraction at the onset of the pandemic?**

15 A. As can be seen in the following chart, electric utility raw betas were in the 0.2 to 0.25 range
16 before they increased to approximately 0.9 and have recently returned to around 0.25.



17

1 **Q. How do you interpret the one-year raw beta data shown in the chart?**

2 A. Evergy's stock price during 2020 was volatile due to speculation regarding a potential
3 strategic transaction with another utility company. On August 5, 2020, Evergy announced
4 that it was pursuing a standalone plan rather than a strategic transaction. This caused a
5 sudden decline in Evergy's stock price by approximately \$10 during a couple of trading
6 days. Based on Evergy's stock price of around \$65 at the time, this was about a 15%
7 decline. Therefore, this speculation caused Evergy's beta to skew higher during much of
8 2020. Evergy's 1-year betas starting after August 2021 are more consistent with the
9 electric utility industry and Ameren. Therefore, recent betas do not imply Evergy's risk
10 level is much different than that of the industry.

11 **Q. Based on your CAPM analysis, what is the estimated COE for Evergy and the proxy
12 groups?**

13 A. My CAPM COE analysis indicates that Evergy and the electric utility industry currently
14 have a COE of around 7.5%. (see Schedules DM-D-6).

15 **Q. What inputs did Evergy's financial advisors use to determine an estimate of Evergy's
16 share value if it pursued the STP?**

17 A. ** _____
18 _____
19 _____
20 _____
21 _____ **

22 **Q. Are there any other reasonableness tests to show your COE estimates are rational
23 and logical?**

24 A. Yes. First, as I indicated earlier in my testimony, a simple rule of thumb the Chartered
25 Financial Analyst ("CFA") suggests in its curriculum to estimate the COE is to add 3% to
26 4% risk premium to a company's bond yield to provide a fairly simple, but objective cost
27 of equity. Being that the investment community views utility stocks as bond

1 surrogates/substitutes, it is logical and reasonable to not add a risk premium any higher
2 than 3% to the bond. Simply adding a 3% risk premium to recent YTM's of around 4.6%
3 on Evergy Metro's long-term bonds implies a COE of approximately 7.6%.

4 Second, one just needs to think about the basic characteristics of utility stocks, which is
5 that investors typically view them as yield investments. An analysis performed by Alliance
6 Bernstein (an equity research firm) showed that between 1974 to 2010, approximately 68%
7 of returns from utility stocks were from the income received through dividends, with the
8 remaining from capital gains.³¹ However, with some electric utility companies targeting
9 lower dividend payout ratios, at least in the near-term, in order to fund higher capital
10 expenditure programs related to grid modernization and renewable generation projects, it
11 is reasonable to expect a larger share of returns may be in the form of capital gains. But a
12 fundamental change in the basic characteristics of electric utility stocks is highly unlikely.
13 Even if assuming electric utility stocks generated 50% of returns from capital gains over
14 the long-term, this translates into only a 6.4% required return based on the current average
15 electric utility dividend yield of approximately 3.2%. If Evergy investors were able to
16 achieve 50% of their total return from capital gains over the long-term, this implies a total
17 return of approximately 7% based on its current dividend yield of approximately 3.5%.

18 **Q. Based on your analysis and understanding of Evergy's COE, the electric utility**
19 **industry's COE, investor expectations on allowed ROEs, average electric utility**
20 **authorized ROEs and Evergy's authorized returns for its Kansas electric utility**
21 **operations, what would be a fair and reasonable allowed ROE range in this case?**

22 **A.** 8.5% to 9.5% would be justified with 9% being reasonable for MO West and Metro to
23 attract capital.

³¹ Hugh Wynne, Francois D. Broquin, and Saurabh Singh, "U.S. Utilities: Our Dividend Growth Model Identified Utilities Poised to Pay More," May 20, 2011, Bernstein Research.

1 **Q. Considering your estimate MO West’s COE in the range of 7% to 7.5%, why do you**
2 **consider a 9% authorized ROE reasonable?**

3 A. While it certainly may be a worthwhile debate to quantify the amount of “premium,” if
4 any, over the COE that is fair and reasonable to allow a utility, the Commission has
5 repeatedly indicated it needs to consider average authorized ROEs in setting a fair and
6 reasonable ROE for its Missouri utilities. As it relates to this instant case, I believe the fact
7 that the cost of capital has generally been declining since the Commission last awarded
8 Metro a 9.5% ROE supports a reduction. This is also supported by lower average
9 authorized ROEs awarded to other companies.

10 **CAPITAL STRUCTURE**

11 **Q. Will you briefly explain capital structure?**

12 A. Capital structure represents how a company’s assets are financed. The typical capital
13 structure consist of common equity, long-term debt, and short-term debt. Although short-
14 term debt is a typical component of a utility company’s capital structure, if it is fully
15 supporting construction work in progress (“CWIP”), then it typically is excluded from the
16 rate making capital structure and reflected in the allowance for funds used during
17 construction (“AFUDC”) rate.

18 **Q. What capital structure do you recommend for purposes of setting MO West’s rate of**
19 **return (ROR)?**

20 A. I recommend a capital structure that consists of approximately 48% common equity and
21 52% long-term debt. My capital structure recommendation is based on my analysis of
22 Evergy’s, MO West’s and Metro’s quarterly capital structures from the beginning of the
23 test year (July 1, 2020) through the update period (December 31, 2021). My recommended
24 capital structure ratios consider the interdependency of Evergy and its subsidiaries’ capital
25 flows. Other than MO West’s significant need for liquidity, i.e. short-term debt, during
26 Storm-Uri, there is no compelling rationale for Evergy to target disparate capital structure
27 for itself on a consolidated basis or for any one of its subsidiaries on a standalone basis.

1 **Q. What is the basis for this capital structure recommendation?**

2 A. My recommended capital structure for MO West is consistent with Evergy's consolidated
3 capital structure and Metro's average capital structure for the test year and the updated test
4 year in this case. With the inclusion of short-term debt, Evergy has typically had an equity
5 ratio of approximately 45% and Metro's common equity ratio has been in the 47% to 48%
6 range. If short-term debt is excluded, each capital structure has had a common equity ratio
7 of approximately 48%.

8 **Q. Why did you not rely on MO West's per books capital structure for your capital**
9 **structure recommendation for this case?**

10 A. Because it is inconsistent with the financial risk inherent in Evergy's consolidated capital
11 structure. In MO West's last two rate cases, the parties have disputed the integrity of MO
12 West's capital structure. For purposes of settlement in Case No. ER-2018-0146, some
13 parties agreed that MO West's capital structure as of December 31, 2017 should be adjusted
14 by \$169 million of goodwill. However, MO West's common equity ratio before this
15 adjustment was not specified in the agreement.³²

16 **Q. What is goodwill?**

17 A. Goodwill represents the excess amount of the purchase price for a company and/or assets
18 that cannot be reconciled to the existing book value of these assets. For example, most
19 publicly-traded utilities' stock prices are valued higher than the book value of the equity
20 shown on utilities' balance sheets. When a company acquires a utility at a price that is
21 usually even higher than the target utility's market capitalization before the announced
22 acquisition, then the value of the target company is booked on the acquirer's balance sheet
23 at the purchase price. To the extent the book value of tangible and intangible assets do not
24 reconcile to the purchase price, the balance is classified as a goodwill asset.

³² Case No. ER-2018-0146, Non-Unanimous Stipulation and Agreement, September 19, 2018.

1 **Q. Why is it important to consider the interaction of goodwill and per books common**
2 **equity as it relates to analyzing MO West’s capital structure?**

3 A. Because Staff witness Jeffrey Smith had proposed making an adjustment to MO West’s
4 consolidated GAAP balance sheet ratios at June 30, 2018, which contained a common
5 equity balance of \$1.323 billion³³ as compared to Company witness Darren Ives, who
6 proposed making an adjustment to a common equity balance of ** _____ ** at
7 June 30, 2018.³⁴

8 **Q. Were you able to identify the source document Mr. Smith used to determine his**
9 **common equity balance?**

10 A. Yes. Mr. Smith relied on MO West’s consolidated balance sheets the Company provided
11 in response to Staff Data Request No. 0298 in Case No. ER-2018-0146.

12 **Q. Were you able to identify the source document Mr. Ives relied on for his common**
13 **equity balance?**

14 A. No. But apparently his source was an internal financial report that deconsolidates MO
15 West’s consolidated capital structure.

16 **Q. Were there any publicly-available balance sheets for MO West at June 30, 2018?**

17 A. Yes. MO West files Form 3-Qs with the FERC quarterly. Form 3-Qs represent MO West’s
18 consolidated financial statements on a quarterly basis.

19 **Q. What common equity balance was identified for MO West in its June 30, 2018 Form**
20 **3-Q?**

21 A. \$1.17 billion.

³³ Case No. ER-2018-0146, Smith Surrebuttal, p. 13, lns. 1-3

³⁴ Case No. ER-2018-0146, Ives Rebuttal, p. 14, lns. 13-14.

1 **Q. What goodwill amount was reflected in MO West's June 30, 2018, FERC Form 3-Q**
2 **filing?**

3 A. \$169 million, which is recorded under FERC Account No. 186, Miscellaneous Deferred
4 Debits.

5 **Q. If the goodwill balance were deducted from the \$1.17 billion of equity reported on**
6 **MO West's FERC Form 3-Q, what was the indicated common equity ratio on June**
7 **30, 2018?**

8 A. 48.13%, which is fairly similar to Mr. Smith's recommended common equity ratio of
9 47.43% in that case.

10 **Q. What common equity balance was reported on MO West's consolidated GAAP**
11 **balance sheet at June 30, 2021 and December 31, 2021?**

12 A. _____ ** at June 30, 2021 and ** _____ ** at December 31, 2021.

13 **Q. What goodwill balance was reported at both dates?**

14 A. ** _____ **

15 **Q. What common equity balance was reported on MO West's consolidated FERC**
16 **balance sheets at June 30, 2021 and December 31, 2021?**

17 A. \$1,176.9 million at June 30, 2021 and \$1,239.5 million at December 31, 2021

18 **Q. What goodwill balance was reported at both dates?**

19 A. \$169 million.

20 **Q. Why is the GAAP financial information classified as confidential, but the FERC**
21 **financial information is not?**

22 A. I am not entirely sure, but I know utility company financials filed with FERC are generally
23 public documents. I presume because MO West is not registered with the Securities and

1 Exchange Commission because it does not have publicly-traded debt or equity, this allows
2 MO West to maintain confidentiality of its financial statements. However, MO West's
3 private debt investors require MO West to provide its consolidated GAAP financial
4 statements as part of the covenants in their indentures.

5 **Q. Are MO West's debt investors provided MO West's deconsolidated financial**
6 **statements, which is apparently the information MO West relies on for determining**
7 **it ratemaking capital structure recommendation?**

8 A. Not that I am aware of.

9 **Q. What common equity ratio does MO West consider implied based on the agreement**
10 **in Case No. ER-2018-0146?**

11 A. **_____**

12 **Q. What's your basis for this conclusion?**

13 A. Mr. Klote's testimony and schedules filed in MO West's securitization application, Case
14 No. EF-2022-0155.

15 **Q. What does MO West expect its equity ratio will be as of the true-up period, May 31,**
16 **2022?**

17 A. 51.8%.

18 **Q. Did the Kansas Corporation Commission ("KCC") implement safeguards regarding**
19 **potential discrepancies in capital structures when it approved the merger of Great**
20 **Plains Energy and Westar?**

21 A. Yes. A condition of the KCC's approval of the merger was to institute an Earnings Review
22 and Sharing Plan ("ERSP"). The KCC understood that the newly formed entity, Evergy,
23 could attempt to accrue additional earnings for its shareholders by using more leverage at
24 the holding company level as compared to its subsidiaries. Consequently, if Evergy's
25 consolidated common equity declined below 47.5%, then each Kansas subsidiary's

1 common equity ratio would be reduced by a proportional amount for purposes of
2 determining potential bill credits to customers for the ERSP.³⁵

3 **Q. What common equity ratios did the KCC specify for Evergy's subsidiaries for**
4 **purposes of the ERSP?**

5 A. 51% in 2019, 50.5% in 2020 and 50% in 2021 through 2022.

6 **Q. What common equity ratios has Evergy had recently?**

7 A. Evergy's common equity ratios have been in the range of 47% to 48%.

8 **Q. What does this imply about a reasonable common equity ratio for MO West?**

9 A. Based on the agreement approved at the KCC, the spread between MO West's common
10 equity ratio and Evergy's common equity ratio should not be greater than 2.5%. Therefore,
11 at a minimum, MO West's authorized common equity ratio should not be any higher than
12 50%.

13 **Q. Which MO West financial statements does Evergy present to rating agencies for**
14 **purposes of assessing MO West's creditworthiness?**

15 A. Their consolidated financial statements. Not the deconsolidated financial statements MO
16 West's witnesses have relied on for their recommended capital structures.³⁶

17 **Q. What common equity ratio does Evergy generally target for its long-term capital**
18 **components (common equity and long-term debt)?**

19 A. Around 50% common equity and 50% long-term debt.

³⁵ Docket No. 18-KCPE-095-MER, Order Approving Merger, Attachment A, May 24, 2018, pgs. 18-22.

³⁶ MO West response to Staff Data Request No. 18.

1 **Q. What common equity ratio did Metro recommend in its 2018 rate case?**

2 A. Approximately 49%.³⁷

3 **Q. Does Metro have a goodwill asset?**

4 A. No.

5 **Q. Does Evergy's capital structure support a goodwill asset?**

6 A. Yes. Evergy's assets include \$2.336 billion of goodwill.

7 **Q. If you removed this goodwill from Evergy's common equity balance, what is its**
8 **tangible common equity ratio?**

9 A. Around 38% with short-term debt and 40% without short-term debt.

10 **Q. What is MO West's embedded cost of debt at December 31, 2021?**

11 A. 3.9627%.

12 **Q. Did you accept the Company's calculation methodology to determine the embedded**
13 **cost of debt?**

14 A. Yes. The Company determined the embedded cost of debt using a weighted-average yield-
15 to-maturity, which is a reasonable approach to determining the cost of debt.

16 **Q. What was Metro's embedded cost of debt at December 31, 2021?**

17 A. 3.9236%.

18 **Q. Is the calculation methodology the same as for MO West?**

19 A. Yes.

³⁷ Metro True-up Workpapers "KCPL-MO Cost of Capital 6-30-2018"

1 **Q. How do Metro and MO West’s costs of debt compare to Evergy’s consolidated cost**
2 **of debt?**

3 A. According to the Company’s response to OPC Data Request No. 3025, Evergy’s
4 consolidated cost of debt is 3.9%. The consolidated cost is likely lower due to Evergy’s
5 lower-cost of standalone holding company debt, which had a weighted-average cost of
6 3.2836% on December 31, 2021.

7 **Q. Are there any other complicating factors as it relates to determining an appropriate**
8 **authorized capital structure for MO West?**

9 A. Yes. MO West incurred significant costs to purchase energy during Winter Storm Uri
10 (“Storm Uri”). As can be seen on pages three and four of Schedule DM-D-7, MO West
11 has consistently had a high proportion of its capital structure supported by short-term debt
12 (both third-party debt and affiliate debt). MO West’s short-term debt balance almost
13 tripled during the first quarter of 2021 (an increase in funds received from short-term debt
14 of \$525 million), which is the period in which MO West incurred over \$300 million in
15 extraordinary energy costs during Storm Uri. “Related party” payables also increased by
16 \$200 million so these funding sources were more than adequate to cover Storm Uri costs.

17 Additionally, because MO West is borrowing significant amounts of capital from Evergy’s
18 internal money pool and Evergy has now established a \$700 million holding company
19 commercial paper program, the transfer of capital among affiliates has become more
20 frequent and significant. The more each entity relies on each other for allocation of capital,
21 the more removed each company’s capital structure becomes from that of an independent
22 entity.

23 **Q. What do you mean?**

24 A. For example, Evergy paid its shareholders \$497.3 million in dividends in 2021. However,
25 MO West did not pay any dividends to Evergy in 2021 and Metro only paid \$50 million in
26 dividends. Kansas Central paid Evergy \$240 million in dividends. Therefore, Evergy had
27 to issue short-term debt to fund \$207.3 million in dividends to shareholders. Evergy is able

1 to access commercial paper because of its ownership of regulated utility subsidiaries. If
2 Evergy did not have a holding company commercial paper program, then the regulated
3 utility subsidiaries would be required to provide a consistent dividend to the parent
4 company and they would issue commercial paper for their liquidity needs rather than
5 retaining more expensive equity. While this situation may provide capital allocation
6 efficiency for the holding company, it comes at an expense to ratepayers through higher
7 accruals in AFUDC and carrying costs for other assets.

8 **Q. How do you propose this issue be addressed?**

9 A. In MO West's Storm Uri securitization case, Case No. EF-2022-0155, the average monthly
10 short-term debt rate should be used to determine the allowable carrying costs included in
11 the amount to be securitized. If a short-term debt rate is not used to determine the carrying
12 costs, but rather the overall authorized ROR, then this short-term debt should be included
13 in determining MO West's authorized ROR.

14 **Q. What percentage of MO West's capital structure should be assigned short-term debt
15 if Storm Uri is allowed a ROR for carrying costs?**

16 A. 8.54%.

17 **Q. How did you determine this ratio?**

18 A. For the twelve months ended, December 31, 2021, I determined the average amount of
19 short-term debt in excess of CWIP, which was \$204.977 million (see page 4 of Schedule
20 DM-D-7). I divided this amount by the average total capitalization (adjusted for goodwill)
21 for 2021 to determine the average ratio of short-term debt in excess of CWIP.

22 **Q. How does use of MO West's financial statements filed with FERC impact the implied
23 short-term debt ratio in excess of CWIP?**

24 A. Including goodwill, the implied short-term debt in excess of CWIP ratio would be 10.8%.
25 Excluding goodwill the implied short-term debt in excess of CWIP is 11.54%.

1 **Q. What do you consider the best approach to sort through the alternative sets of**
2 **financial statements, methods, and potential adjustments to make to MO West’s**
3 **capital structure for ratemaking purposes in this case?**

4 A. Take guidance from Evergy’s targeted and actual consolidated capitalization ratios to
5 assure MO West’s capital structure is based on the most cost efficient use of leverage (i.e.
6 debt). While I understand the Commission has shown a preference for using a subsidiary
7 capital structure if that subsidiary issues all of its own debt (or in the case of Spire Missouri,
8 at least all of its long-term debt, but not short-term debt), due to the numerous affiliate
9 capital transfers that occur (money pool transactions) and Evergy’s issuance of significant
10 amounts of holding company commercial paper, I do not have confidence that the utility
11 subsidiaries’ capital structures are a consequence of managing to the lowest reasonable cost
12 for the subsidiary.

13 **Q. Do you have an example of commentary that supports your view that Evergy manages**
14 **its subsidiary capital structures to those authorized by the Commission?**

15 A. Yes. Moody’s stated the following about MO West’s capital structure in an April 29, 2021
16 Credit Opinion:

17 The company plans to fund these capital expenditures with a balance of
18 internally generated cash flow, incremental debt and money pool
19 borrowings, **adjusting dividends as needed to maintain the utility’s**
20 **regulatory allowed capital structure.**³⁸ (emphasis added)

21 **Q. Is it prudent for a utility subsidiary’s capital structure to remain constant over time?**

22 A. No. Changes in capital market conditions and business risk should consistently and
23 constantly be evaluated to determine the most cost efficient balance of capital and timing
24 for capital issuances. Evergy’s BOD and Finance Committee are primarily focused on
25 managing Evergy’s consolidated capital structure for cost efficiency and earning accretion
26 to attempt to maximize shareholder value.

³⁸ Hamilton, Nana, “Evergy Missouri West, Inc. – Update to Credit Analysis,” Moody’s Investor Services, April 29, 2021.

1 **Q. Can you provide examples from Evergy’s Finance Committee discussions?**

2 A. Yes. At Evergy’s November 1, 2021 Finance Committee meeting, the Committee
3 discussed that its ** _____
4 _____
5 _____
6 _____
7 _____
8 _____
9 _____
10 _____ **

11 **Q. Has Evergy used significantly more leverage at the holding company to take**
12 **advantage of the lower business risk associated with its Missouri subsidiaries elections**
13 **of PISA on January 1, 2019?**

14 A. No. Unlike Ameren, Evergy has maintained some parity between its consolidated capital
15 structure and that of its Missouri subsidiaries. As I testified in Ameren Missouri’s recent
16 rate cases, Ameren has increased the amount of holding company debt it issues without a
17 proportionate increase in the debt utilized at its Ameren Missouri subsidiary. The KCC
18 appropriately imposed a condition on Evergy to minimize the potential of this occurring.

19 **Q. Did Evergy plan to issue more holding company debt after it was formed in order to**
20 **boost Evergy’s shareholders EPS?**

21 A. Yes. It had planned to buyback approximately three million shares of common equity. The
22 Company planned to issue holding company debt to partially fund this buyback.

23 **Q. How much debt did it issue before the share buyback program was halted?**

24 A. \$1.6 billion.

³⁹ Evergy Finance Committee Meeting, November 1, 2021, p. 27.

1 **Q. How does affiliate financing issues impact other areas of ratemaking of Evergy's**
2 **Missouri utility subsidiaries?**

3 A. Because Metro has only paid \$170 million in dividends (\$120 million in 2020 and \$50
4 million in 2021) to Evergy of its \$611 million in earnings in the last two years - a payout
5 ratio of only 28%, Metro has issued almost no commercial paper (i.e. short-term debt) since
6 the first half of 2020, when Metro paid \$80 million of dividends. Consequently, Evergy's
7 management of Metro's capital flows has caused Metro's AFUDC rate to be much higher
8 than it otherwise would be if it were a standalone company targeting a typical utility
9 dividend payout ratio of around 65%.

10 **Q. What corroborating information supports your position that Evergy's Missouri**
11 **subsidiaries' business risks are lower due to its ability to recover a return on and of**
12 **investments between rate cases through PISA?**

13 A. First, by the very fact that as part of its STP initiative, Evergy increased its planned capital
14 expenditures by \$438 million for its Missouri systems. According to Elliott, the allocation
15 of capital to investment in Missouri would create more shareholder value than Evergy's
16 share buyback program.⁴⁰ Of course, to the extent the Commission awards a ROR that is
17 significantly higher than Evergy's cost of capital, this initiative will create even more
18 shareholder value. Consequently, I recommend the Commission at the very least not set
19 Metro's and MO West's authorized ROEs any higher than the KCC's current awarded
20 ROE of 9.3%.

21 Second, both Moody's and S&P have consistently cited the PISA ratemaking mechanism
22 as a credit positive factor as it relates to Evergy's Missouri utility companies, Ameren
23 Missouri and Empire. In fact, Moody's lowered Ameren Corp's Funds from Operations
24 ("FFO")/debt⁴¹ threshold to 17% from 19%, which means that Ameren Corp can incur

⁴⁰ Elliott's January 21, 2020 letter to Evergy's Board of Directors.

⁴¹ FFO/Debt (as generally referenced by most evaluating credit worthiness) is the credit metric that receives the most weight by both Standard & Poor's (S&P) and Moody's. This metric provides insight as to how much sustainable cash flow the operations generate as it relates to the amount of fixed obligations, which includes traditional debt, but also other obligations such as capital leases. The higher the ratio, the less financial risk implied by the ratio.

1 more leverage as it compares to cash flow and still maintain its current credit rating of Baa1
2 (functional equivalent of S&P's BBB+). One of the primary reasons Moody's cited for
3 allowing Ameren Corp to have a lower FFO/debt threshold (i.e. use of more leverage) was
4 "improved regulatory construct in Missouri facilitating meaningful rate base growth and
5 reducing regulatory lag [PISA]." ⁴² While I am not aware of S&P or Moody's making any
6 specific adjustments to Metro's or MO West's credit metric benchmarks, this certainly
7 supports authorizing a lower common equity ratio than Metro and MO West were targeting
8 in 2018, before the law allowing PISA was passed. Considering the anticipated sizeable
9 increase in Metro's and MO West's rate base over the next several years, it is just and
10 reasonable to set the authorized capital structure with a ratio of debt Evergy targets at the
11 consolidated level. Recognizing this lower business risk by including a higher debt ratio
12 in the capital structure ensures Evergy's Missouri ratepayers receive credit for Evergy's
13 reduced risk profile afforded by the legislative opportunity to receive a return on and of
14 plant placed in service between rate cases.

15 **Q. Why do you consider Evergy's long-term equity ratio to be the most appropriate for**
16 **setting Metro's allowed ROR?**

17 **A** Evergy allocates capital around its companies to target and achieve ratemaking common
18 equity ratios. The most objective and practical measure of the capital structure that
19 captures the debt capacity of Evergy's regulated utility assets, is that of the Evergy on a
20 consolidated basis. Consequently, this is why I am recommending MO West's and
21 Metro's be set no higher than Evergy's, which is currently approximately 48%, net of short-
22 term debt.

Moody's more specifically defines FFO/debt as "Cash flow from Operations – Pre Working Capital to Debt".
However, I will generally refer to each as FFO/debt.

⁴² "Update to Credit Analysis," Moody's Investor Service, March 29, 2019, p. 2.

1 **Q. How can the Commission determine an equitable, market-tested and objective capital**
2 **structure that more closely captures the amount of debt capacity that is consistent**
3 **with Metro's and MO West's business risks?**

4 A. The Commission can more closely capture debt capacity consistent with MO West's
5 business risks by using Evergy's consolidated capital structure as a proxy. While this
6 capital structure includes capital that is used for investment in all of Evergy's subsidiaries,
7 this should not be the focus for determining the proper balance of capital as it relates to
8 each of Evergy's subsidiaries. Evergy's strategic financing decisions primarily concentrate
9 on the amount of leverage Evergy can carry on a consolidated basis. This capital structure
10 most accurately reflects the debt capacity afforded by Evergy's regulated utility
11 subsidiaries.

12 **SUMMARY AND CONCLUSIONS**

13 **Q. Can you summarize your main conclusions and views as it relates to an authorized**
14 **ROR in this case?**

15 A. MO West ratepayers deserve consideration for the fact that they are now charged for plant
16 placed in service in between general rate cases. In competitive markets, if a company is
17 able to reduce its business risk and have more assurance of achieving its expected returns,
18 its debt capacity increases. However, MO West's targeted common equity ratio has not
19 changed since before it was able to elect PISA. Consideration for such lower business risk
20 can be achieved by reducing the awarded ROE and/or reducing the authorized common
21 equity ratio. Sustained higher valuation levels of utility stocks (systematic factors) support
22 lowering MO West's awarded ROE. MO West's lower business risk due to PISA support
23 a higher amount of leverage in its authorized capital structure. This is most objectively
24 determined by looking to the amount of leverage used by Evergy. In fact, if Evergy's
25 balance sheet were recorded based on the original book value of its utility assets (before
26 the recording of goodwill), its common equity ratio would be closer to approximately 40%.
27 This illustrates the reasonableness of my recommended 48% common equity ratio. A 9%

1 ROE applied to this 48% common equity ratio is fair and reasonable in the current market
2 environment.

3 **Q. Does this conclude your testimony?**

4 A. Yes.