

**BEFORE THE PUBLIC SERVICE COMMISSION
OF THE STATE OF MISSOURI**

In the Matter of Union Electric Company)
d/b/a Ameren Missouri’s Tariffs to Adjust)
its Revenues for Electric Service)
File No. ER-2022-0337

STAFF RESPONSE TO APRIL 4 ORDER REGARDING LOAD DATA

COMES NOW Staff of the Missouri Public Service Commission and for its Response to the Commission’s *Order Directing Response About Peak Usage Data and the Filing of an Updated Issues List* (“Order”) issued on April 4, 2023, respectfully states as follows:

1. The Order required the filing of certain graphs no later than April 6, 2023. Submitted herewith are Staff’s responses to the Order based on Staff’s understanding of what information the Commission desires. If Staff has misunderstood what information the Commission desires, Staff respectfully requests the Commission clarify the desired information.

WHEREFORE Staff respectfully submits the attached information in response to the Commission’s Order issued April 4, 2023.

Respectfully submitted,

/s/ Jeffrey A. Keevil

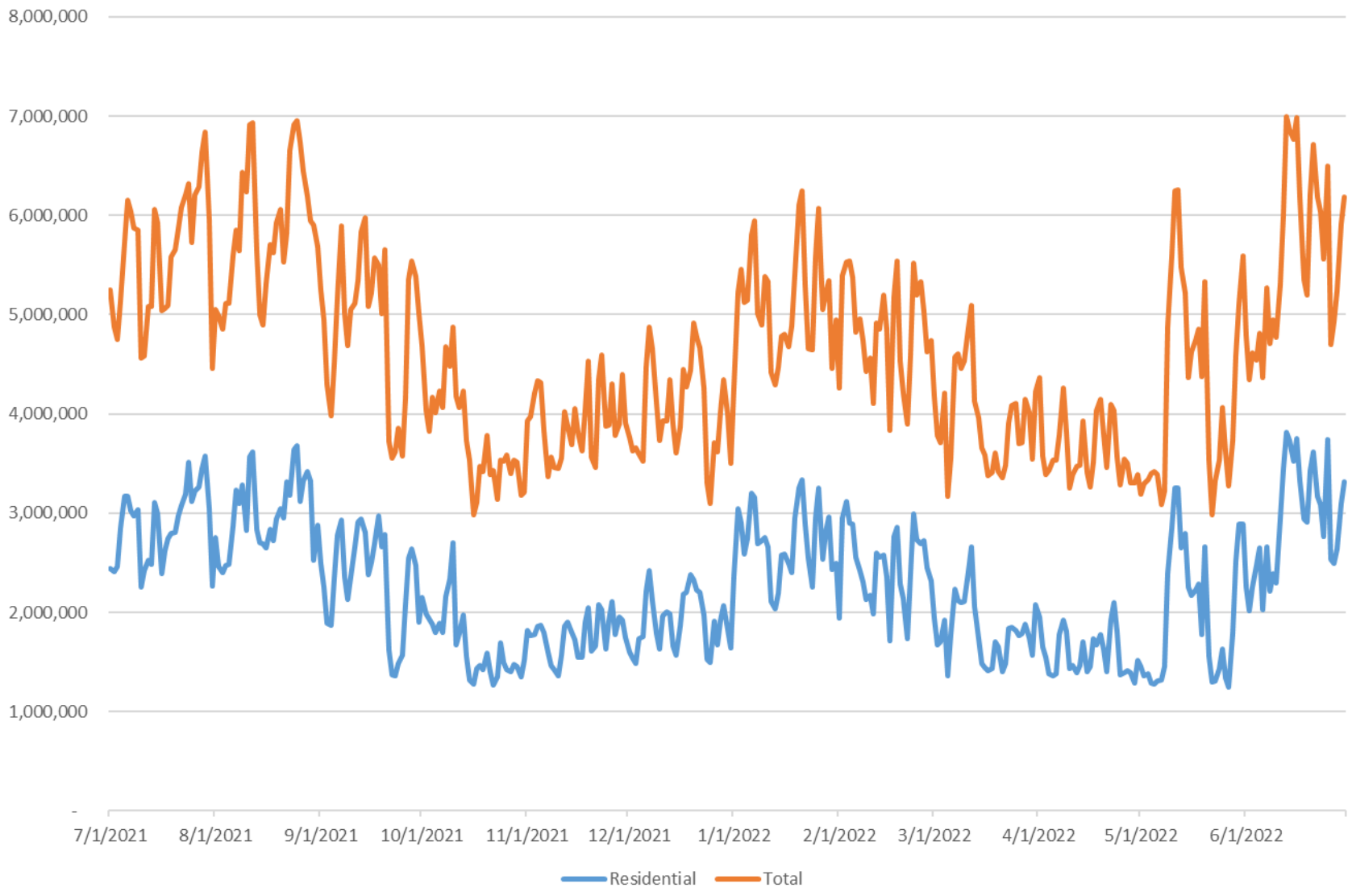
Jeffrey A. Keevil
Deputy Counsel
Missouri Bar No. 33825
Attorney for the Staff of the
Missouri Public Service Commission
P. O. Box 360
Jefferson City, MO 65102
(573) 526-4887 (Telephone)
(573) 751-9285 (Fax)
jeff.keevil@psc.mo.gov (e-mail)

CERTIFICATE OF SERVICE

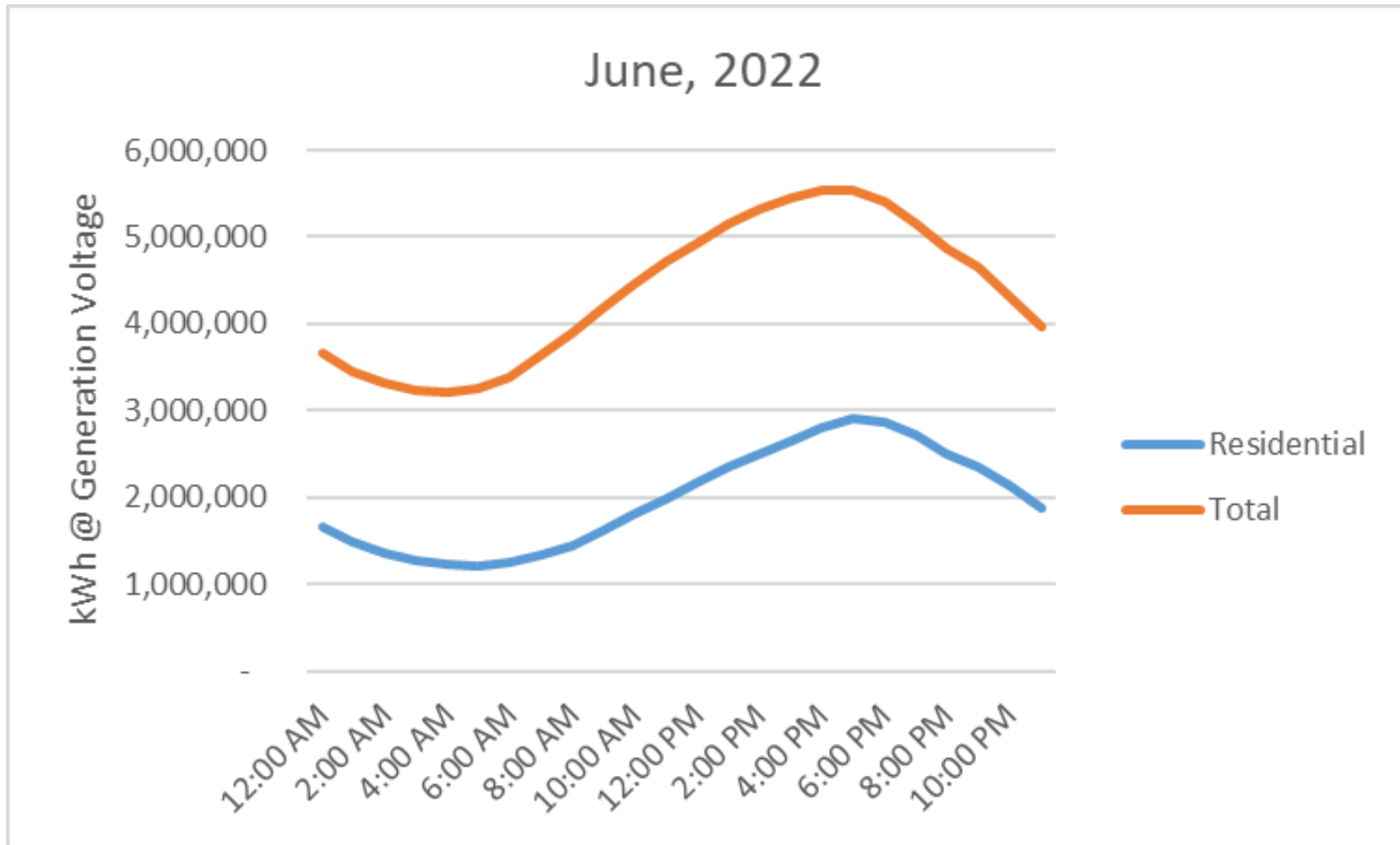
I hereby certify that copies of the foregoing have been mailed, hand-delivered, or transmitted by facsimile or electronic mail to counsel of record as reflected on the certified service list maintained by the Commission in its Electronic Filing Information System this 5th day of April 2023.

/s/ Jeffrey A. Keevil

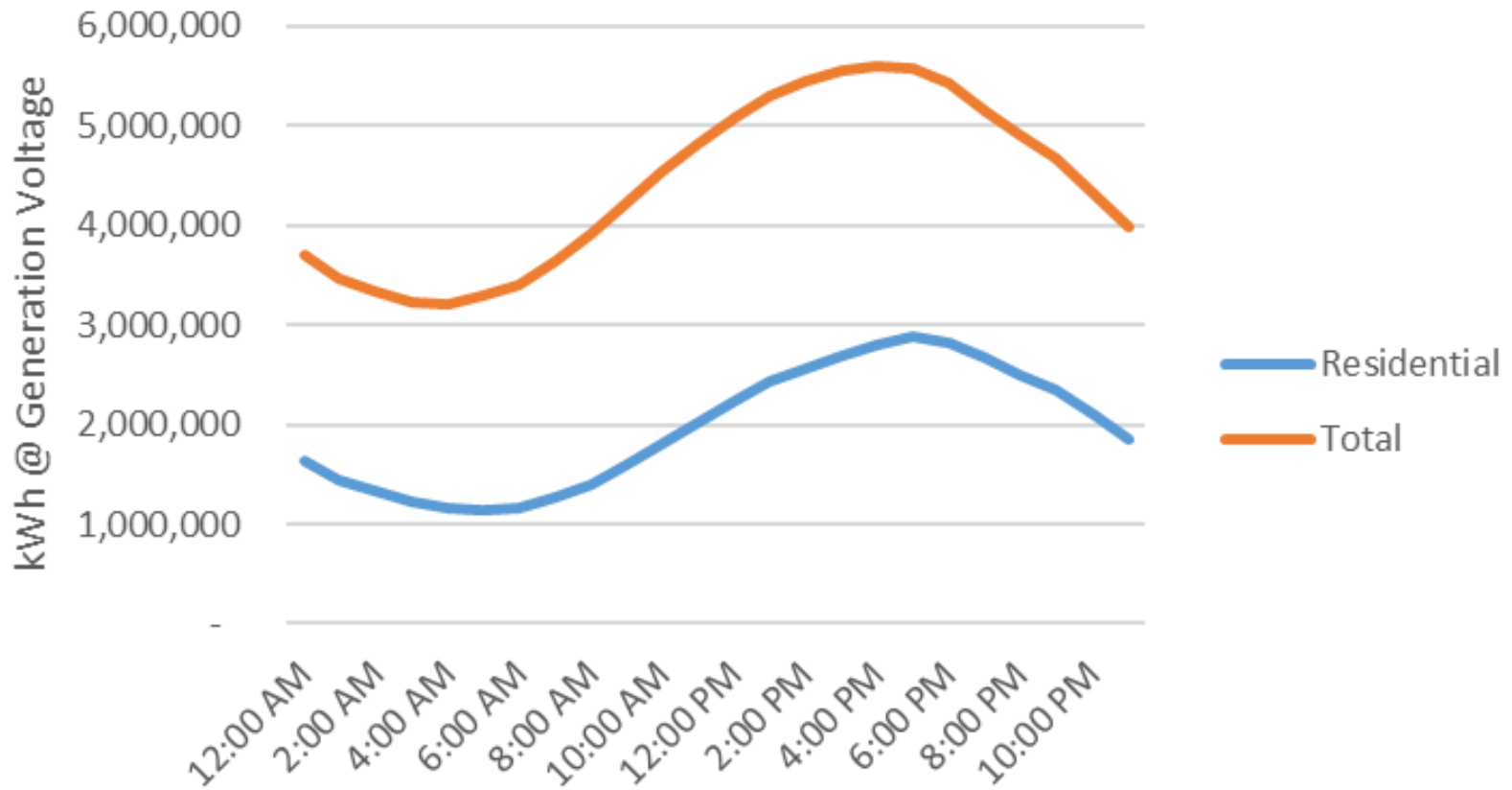
Max Hourly Load in 24 Hour Period @ Generation Voltage July 2021 - June 2022 per Ameren Load Research



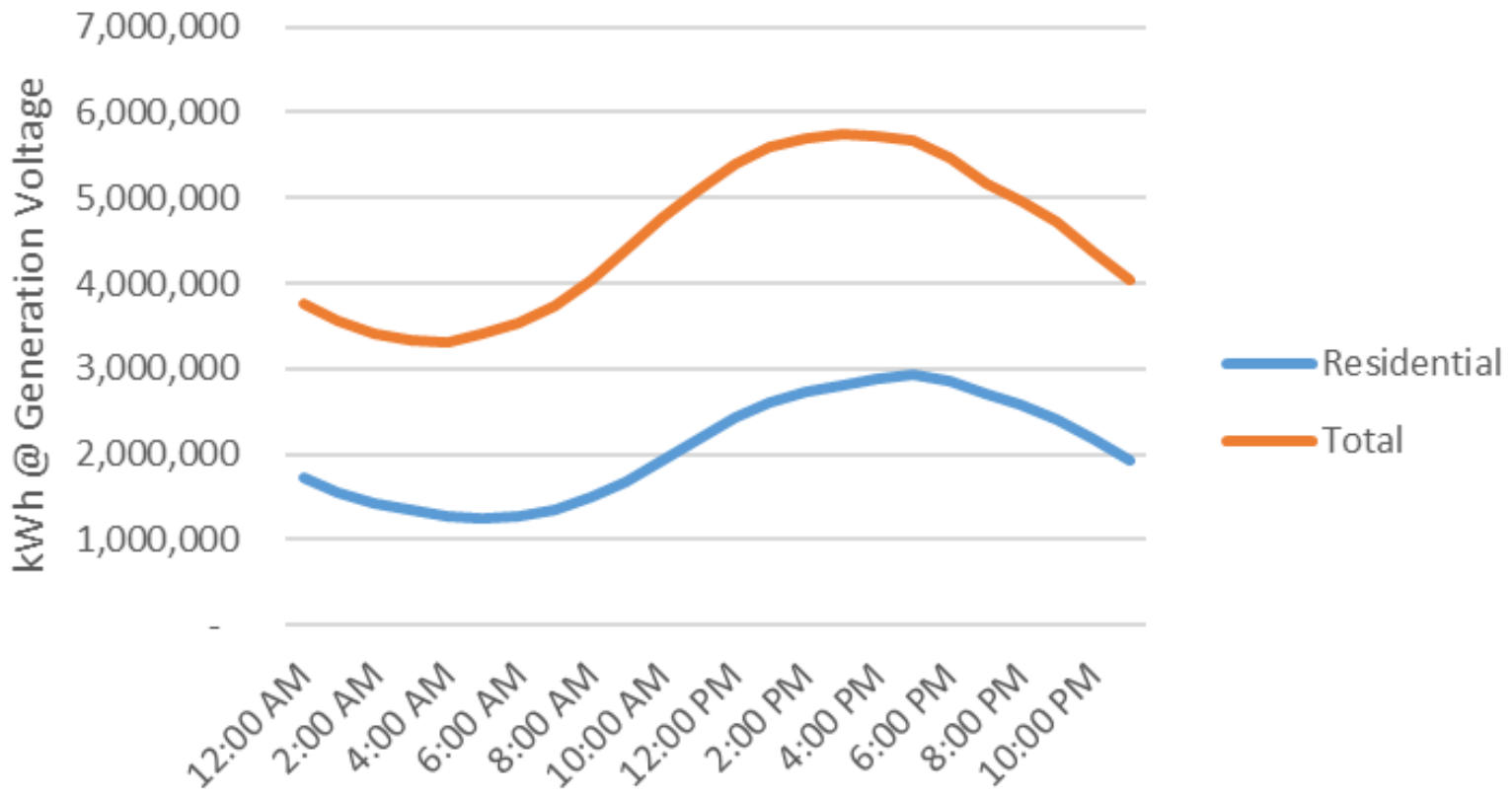
Average load by hour for each hour in specified month, at generation voltage, in kWh, per Ameren load research



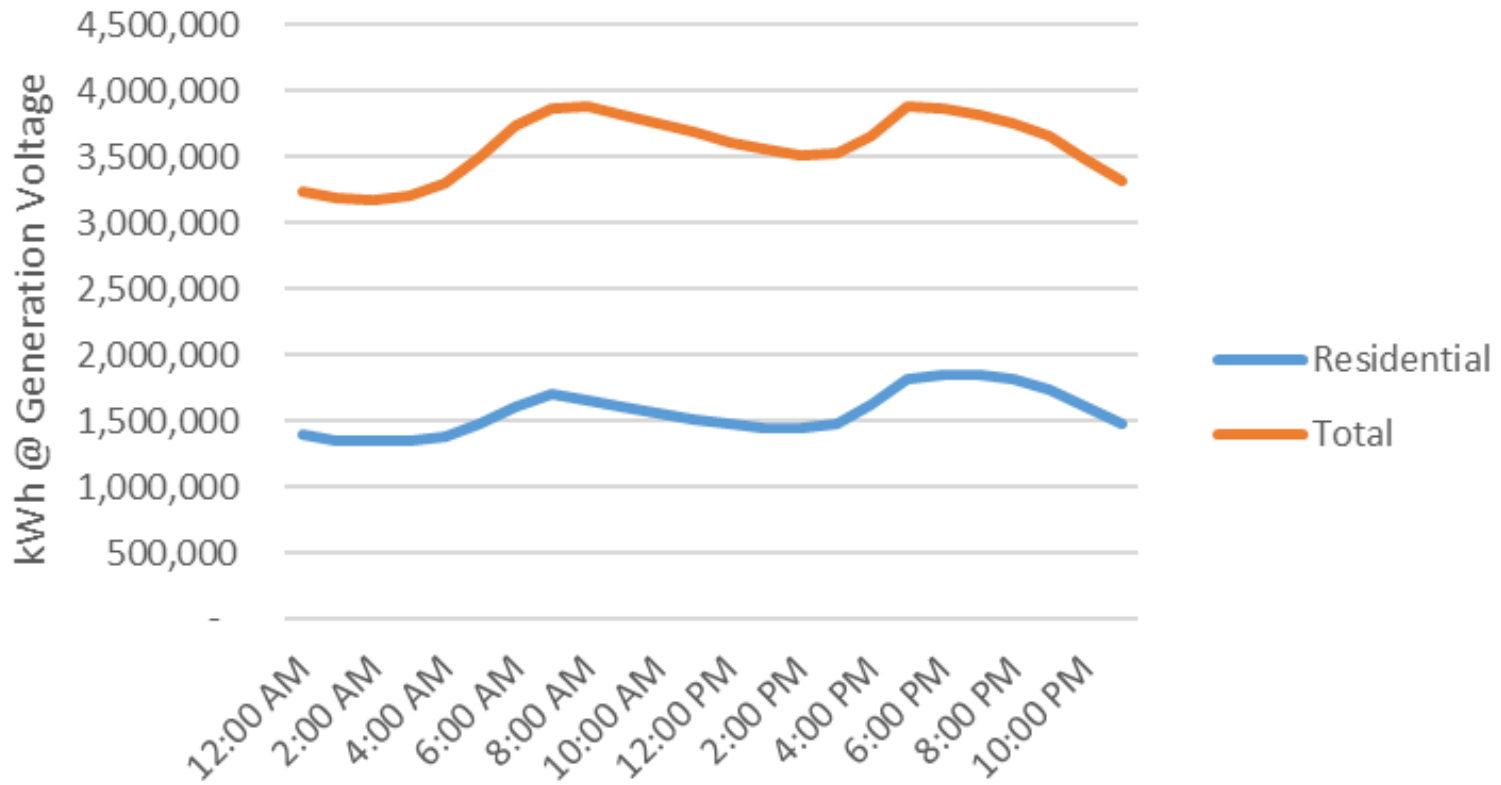
July, 2021



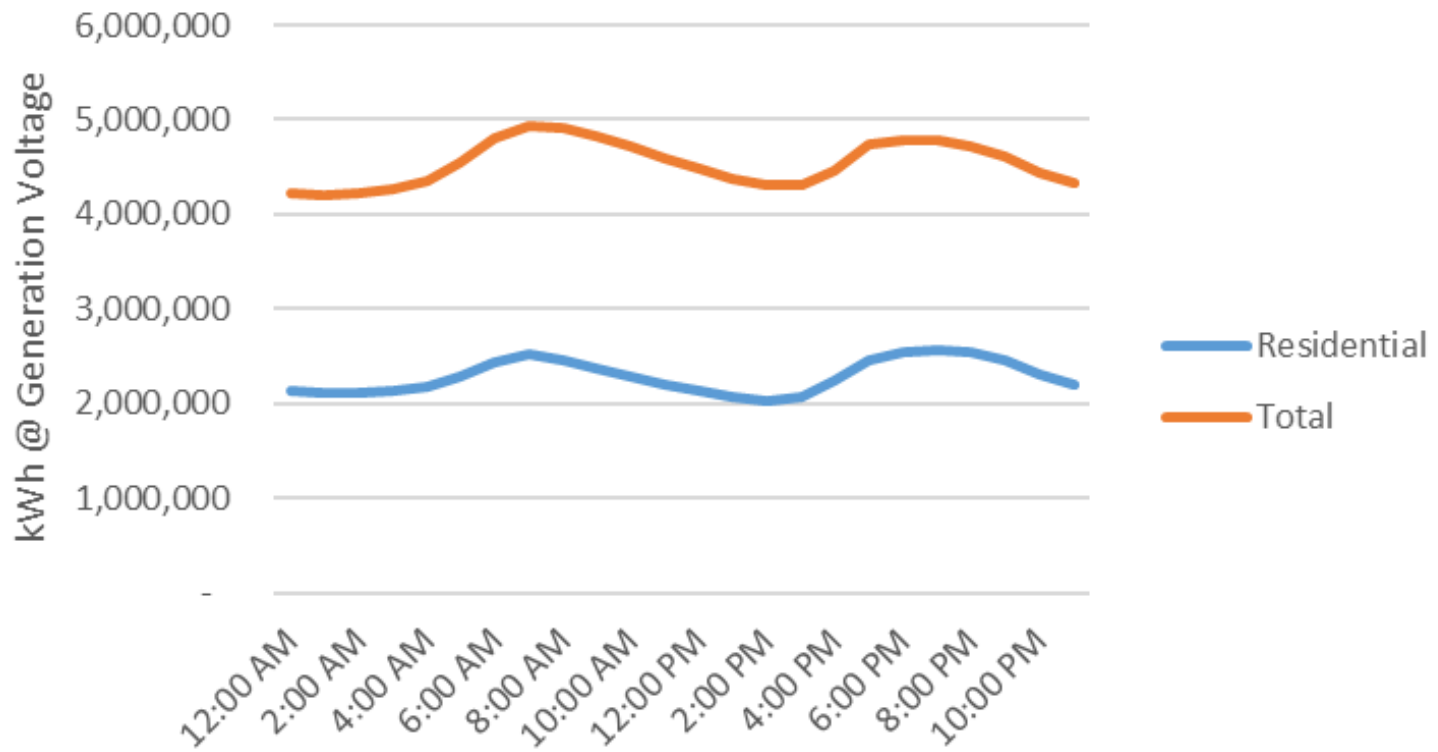
August, 2021



December, 2021



January, 2022



February, 2022

