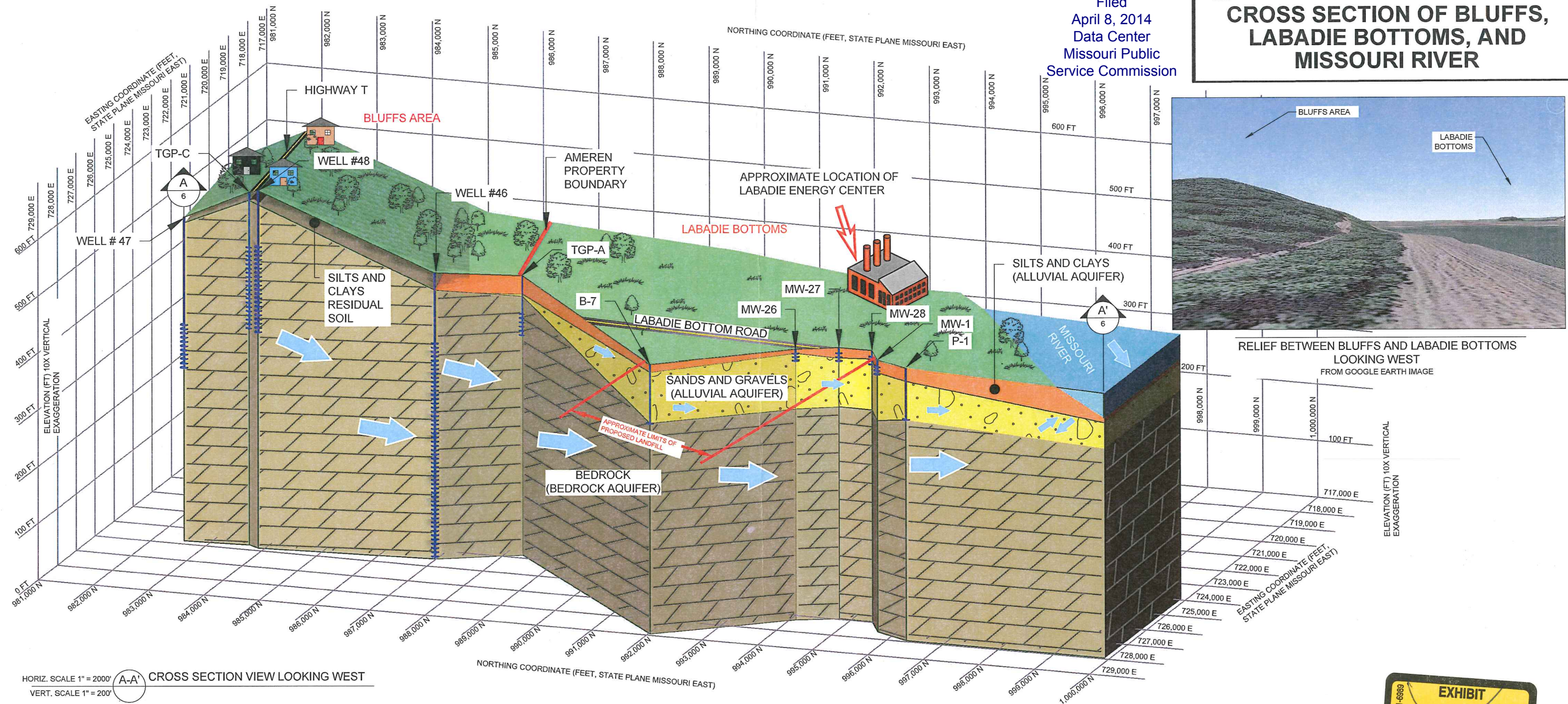


Filed
April 8, 2014
Data Center
Missouri Public
Service Commission

CROSS SECTION OF BLUFFS, LABADIE BOTTOMS, AND MISSOURI RIVER



HORIZ. SCALE 1" = 2000' A-A' CROSS SECTION VIEW LOOKING WEST
VERT. SCALE 1" = 200'

LEGEND

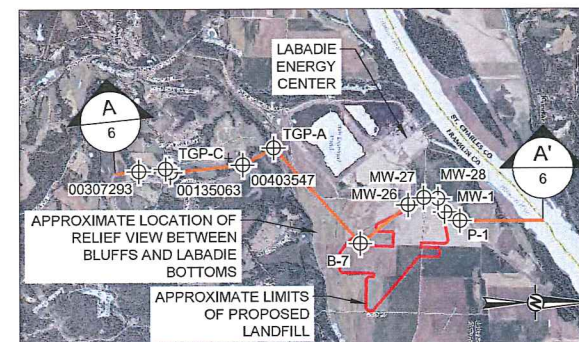
- BH Available well and boring records located along section line
- Groundwater flow direction
- Well screen interval

NOTES

- 1.) Depth and composition of subsurface materials shown in cross section are approximate and conceptualized based on available borehole logs and well record forms.
- 2.) Ground surface topography was interpolated from USGS topographic contours.
- 3.) Cross section displays a 10x vertical exaggeration.
- 4.) Missouri River elevation was taken as 457 ft. above mean sea level based on the 0 ft. gauge river level at the Washington, Missouri gauge station recorded on the national weather service website (water.weather.gov).
- 5.) Elevations are feet above mean sea level using the navd83 datum.
- 6.) Locations are in the state plane coordinate system wgs84 datum. US survey feet, zone 2401 - Missouri East.
- 7.) P-1 and B-7 are borings not completed as wells and are included to show alluvial thickness.
- 8.) The bedrock aquifer consists of multiple rock types including dolomite, sandstone, limestone and shale.

REFERENCES

- 1.) United States Geological Survey (USGS) 7.5-minute series quadrangle map of Labadie, Missouri - 2012.
- 2.) Golder Associates Inc. (2012) Report on Piezometer Installations, Water Level Monitoring, and Groundwater Sampling, Labadie, Missouri. May 9, 2012 (Golder, 2012).
- 3.) Missouri Department of Natural Resources (MDNR) Wellhead Protection Program Database of Private Wells (MDNR, 2013b).
- 4.) Reitz & Jens. Ground Water Detection Monitoring Well Installation Report. May 9, 2013. Ameren Missouri, Labadie Energy Center (Reitz & Jens, 2013c).
- 5.) Reitz & Jens. Summary of Geotechnical Investigation. November 10, 2010. Ameren Missouri, Labadie Energy Center (Reitz & Jens, 2010).
- 6.) Google Earth image downloaded on December 19, 2013.



0 4000 8000 12000
SCALE FEET
CROSS SECTION LOCATION




PROJECT			
 AMEREN MISSOURI LABADIE ENERGY CENTER FRANKLIN COUNTY, MISSOURI			
PROJECT No.	1301560.0001	FILE No.	13015600001F01_REV7
DESIGN	MWD	12/30/13	SCALE AS SHOWN
CADD	MWD	12/30/13	
CHECK	BEF	12/30/13	
REVIEW	MNH	01/14/14	

FIGURE 6