

LOCATION OF STRANDED CUSTOMERS

<u>Line</u>	<u>Map/Section No.</u>	<u>Description</u>	<u>Estimated Cost</u>
(1)	12-14	0.03 miles of 1ø #2 ACSR tie line	\$1,500
(2)	12-14	Deleted	**
(3)	12-14	0.75 miles of 3ø 1/0 ACSR tie line and conversion	\$144,500
(4)	12-24	0.50 miles of 3ø 477 ACSR	*

* Line already included in "Relocation Cost of Lines to Maintain Existing Backfeed Capacity" (See Exhibit)

** Deleted as map inaccurate.

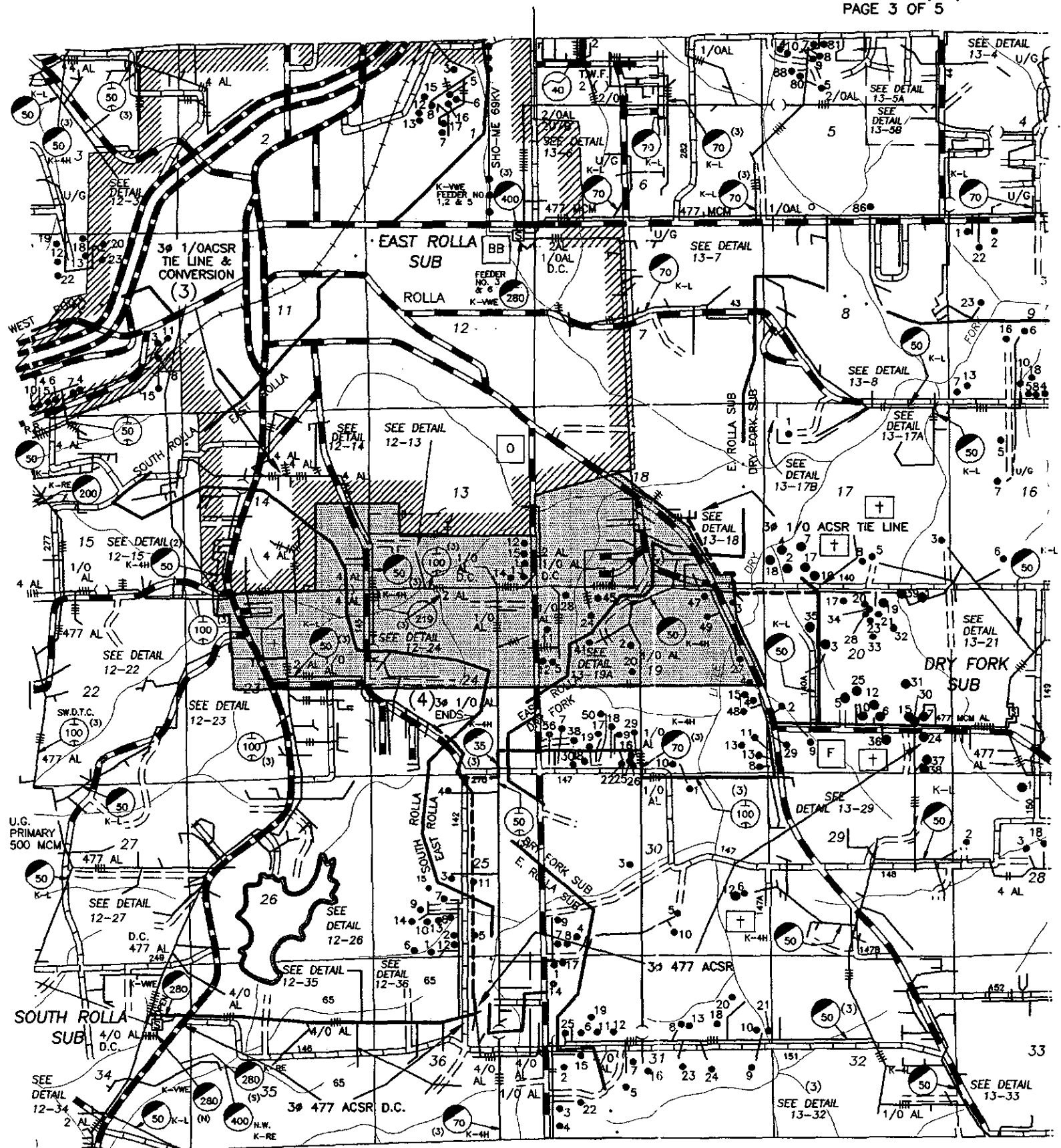
Late Filed Exhibit No. 25
Date 12-20-00 Case No. EA-2000-308
Reporter _____

DATA REQUEST

131. Provide a copy of all the source material you relied upon for your \$150,000 estimate appearing on Page 9 at line 9.

RESPONSE

See Exhibit JEL-11

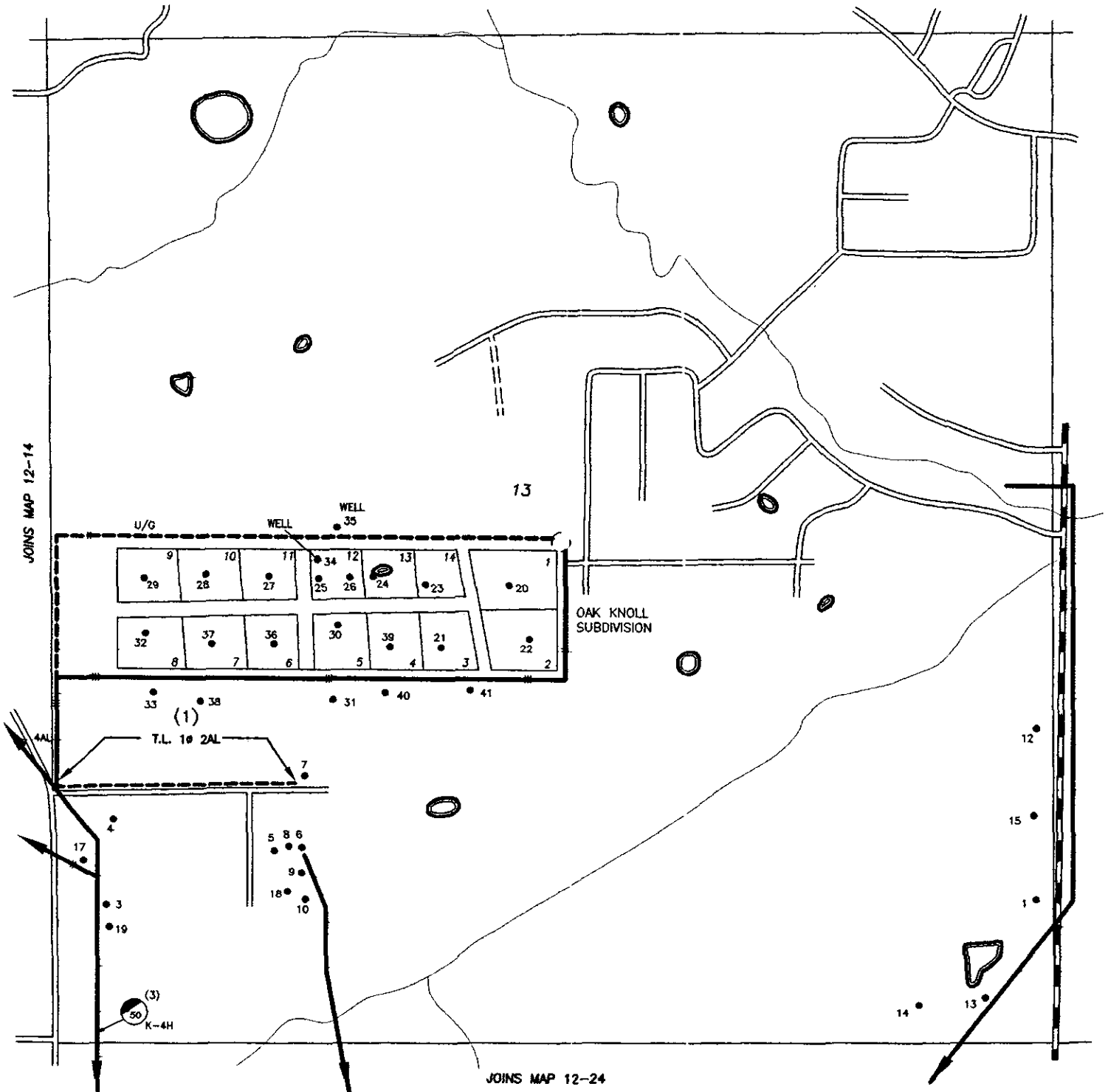


R8W

EXHIBIT JEL-11
CASE NO. EA-2000-308
REVISED 12/11/00
PAGE 4 OF 5

T
37
N

JOINS MAP 12-14



BLOW UP OF SECTION 13

12-13

