

Ex S

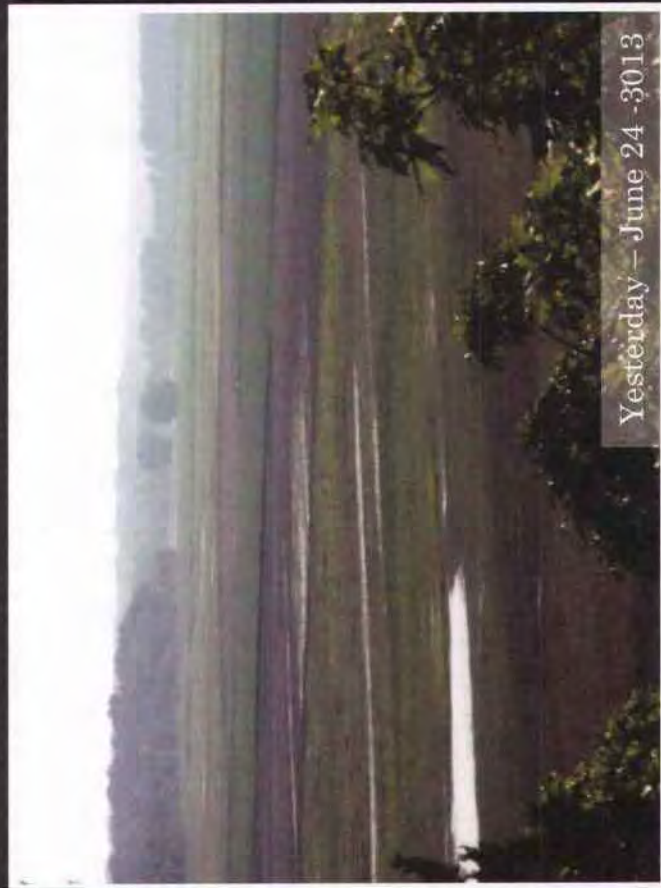


Yesterday - June 24 - 3013



Yesterday - June 24 - 3013

## LABADIE BOTTOMS FLOODPLAIN



Yesterday - June 24 - 3013



Yesterday - June 24 - 3013

FILED  
July 9, 2013  
Data Center  
Missouri Public  
Service Commission



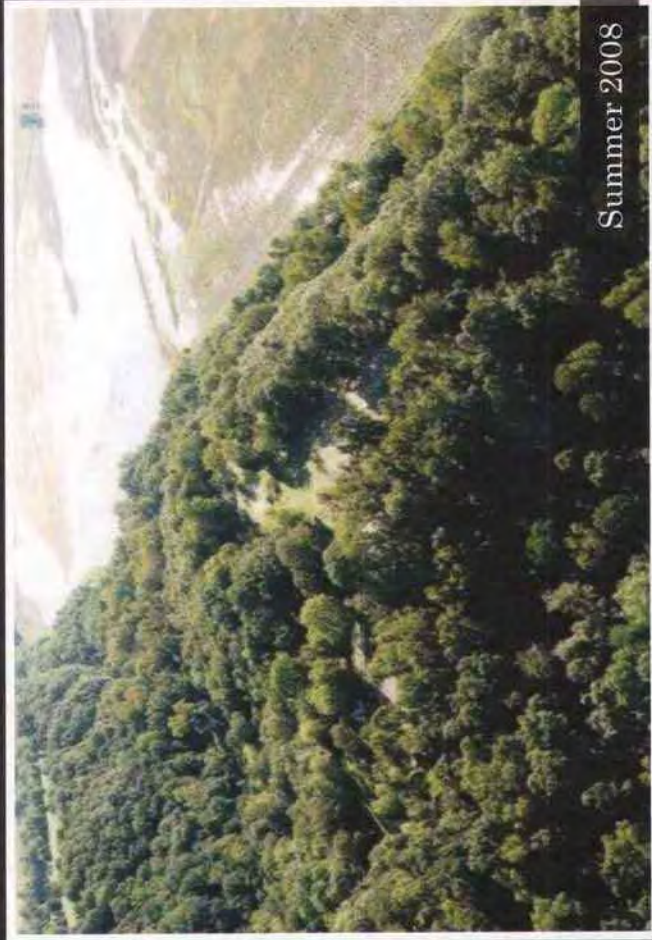


Yesterday — June 24 - 3013

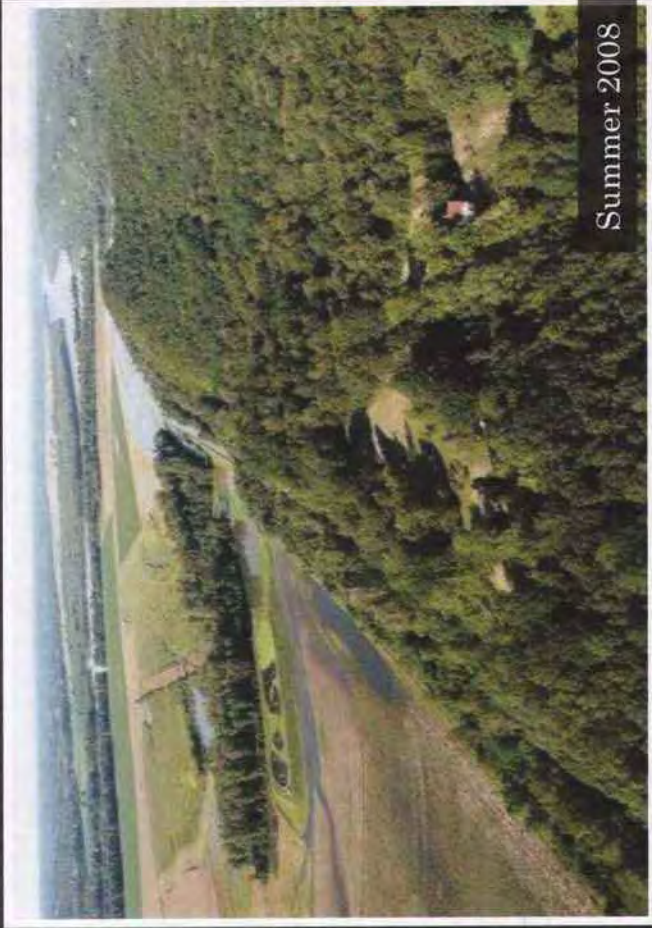


July 2011

## LABADIE BOTTOMS FLOODPLAIN



Summer 2008

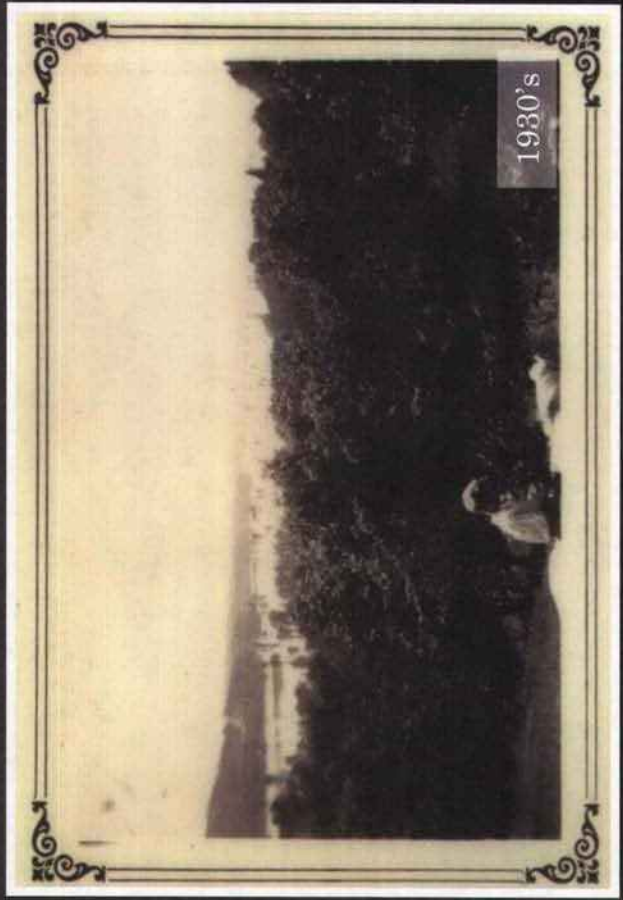


Summer 2008





1951



1930's

## LABADIE BOTTOMS FLOODPLAIN







# EPA TOXIC RELEASE INVENTORY REPORTING

## AMEREN MISSOURI LABADIE ENERGY CENTER

### AMEREN MISSOURI LABADIE ENERGY CENTER

- Toxics Release Inventory ID = 63055LBDPWNO10L
- 226 LABADIE POWER PLANT RD, LABADIE, MISSOURI 63055
- Industry: Electric Utilities

### CONTEXT

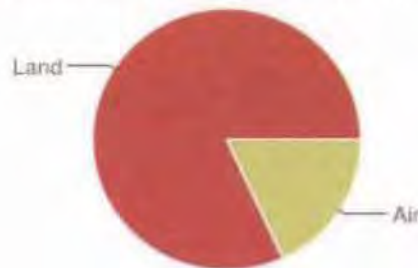
#### County

- 99% of TRI releases in FRANKLIN County , MO
- 17 TRI facilities in FRANKLIN County , MO

#### National

- Ranks 62 out of 621 TRI facilities in Industry: Electric Utilities
- (Rank 1 = highest releases)

### ON SITE RELEASES TOTALS



Source	Pounds Released
Air	567055
Water	0
Land	2559562

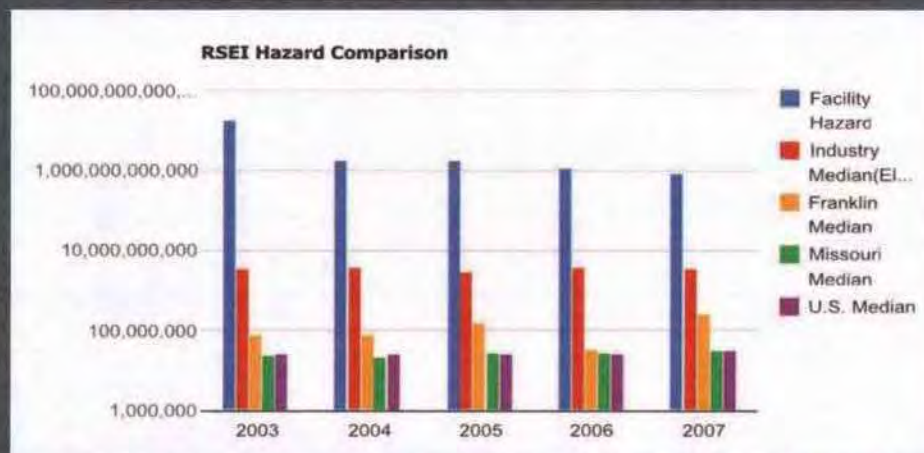
### ON SITE RELEASES BY CHEMICAL

		(Pounds Released )	Health Effects Cancer	Other
• Air				
• Water				
• Waste				
<a href="#">BARIUM COMPOUNDS</a>		2192171.0		✓
<a href="#">HYDROGEN FLUORIDE</a>		321515.0		✓
<a href="#">SULFURIC ACID (1994 AND AFTER "ACID AEROSOLS" ONLY)</a>		178035.0	✓	✓
<a href="#">VANADIUM COMPOUNDS</a>		92851.0		✓
<a href="#">MANGANESE COMPOUNDS</a>		83189.0		✓
<a href="#">ZINC COMPOUNDS</a>		67360.0		✓
<a href="#">COPPER COMPOUNDS</a>		65597.0		✓
<a href="#">NICKEL COMPOUNDS</a>		37504.0	✓	✓
<a href="#">CHROMIUM COMPOUNDS(EXCEPT CHROMITE ORE MINED IN THE TRANSVAAL REGION)</a>		29476.0	✓	
<a href="#">HYDROCHLORIC ACID (1995 AND AFTER "ACID AEROSOLS" ONLY)</a>		25111.0		✓
<a href="#">LEAD COMPOUNDS</a>		12850.0		✓
<a href="#">COBALT COMPOUNDS</a>		11454.0	✓	✓
<a href="#">ARSENIC COMPOUNDS</a>		7977.0	✓	✓
<a href="#">MERCURY COMPOUNDS</a>		1527.0		✓
<a href="#">DIOXIN AND DIOXIN-LIKE COMPOUNDS</a>		0.0030		✓

The Labadie Energy Center ranks #62 for the highest releases of toxic chemicals in the nation. Ameren is not qualified to operate a new landfill when they can not even maintain their current pollution levels. Ameren should works towards cleaning up Labadie as opposed to adding to an already dire situation.



## EPA TOXIC RELEASE INVENTORY REPORTING AMEREN MISSOURI LABADIE ENERGY CENTER



## 2011 AMEREN CORPORATE RESPONSIBILITY REPORT

### Benchmarking Air Emissions — CO<sub>2</sub> Footprint

Ameren had the sixth largest amount of CO<sub>2</sub> emissions, and we ranked 30th among 100 power producers in carbon intensity or emission rate (pounds per megawatt-hour). The ranking was based on 2008 data published in 2010 in Benchmarking Air Emissions of the 100 Largest Electric Power Producers in the United States. This report compares air pollutant emissions of the 100 largest U.S. electric power producers for 2008.

## EPA TOXIC RELEASE INVENTORY REPORTING AMEREN MISSOURI LABADIE ENERGY CENTER

### Facility Hazard

Year	Facility Hazard	Industry Median (Electric Utilities)	County Median	State Median	U.S. Median
2003	18,359,532,719,390	3,354,632,140	82,384,267	23,287,970	24,859,250
2004	1,790,866,430,550	3,610,823,710	81,332,917	20,959,700	25,327,548
2005	1,743,671,665,690	3,001,341,824	158,515,500	28,405,610	25,762,728
2006	1,156,667,541,660	3,711,103,795	32,845,169	28,907,146	26,780,220
2007	795,323,931,250	3,437,483,850	254,481,500	29,781,074	29,800,550

## EPA TOXIC RELEASE INVENTORY REPORTING AMEREN MISSOURI LABADIE ENERGY CENTER

### Facility Pounds

Year	Facility Pounds	Industry Median (Electric Utilities)	County Median	State Median	U.S. Median
2003	2,571,839	450,371	18,450	20,875	19,333
2004	3,734,872	463,616	20,515	17,745	18,603
2005	3,633,078	475,660	20,186	18,079	18,471
2006	2,677,656	476,040	21,965	17,986	20,080
2007	2,264,156	458,471	18,329	17,490	18,994