

# Taum Sauk Upper Reservoir Dam Failure

Missouri Department of Natural Resources

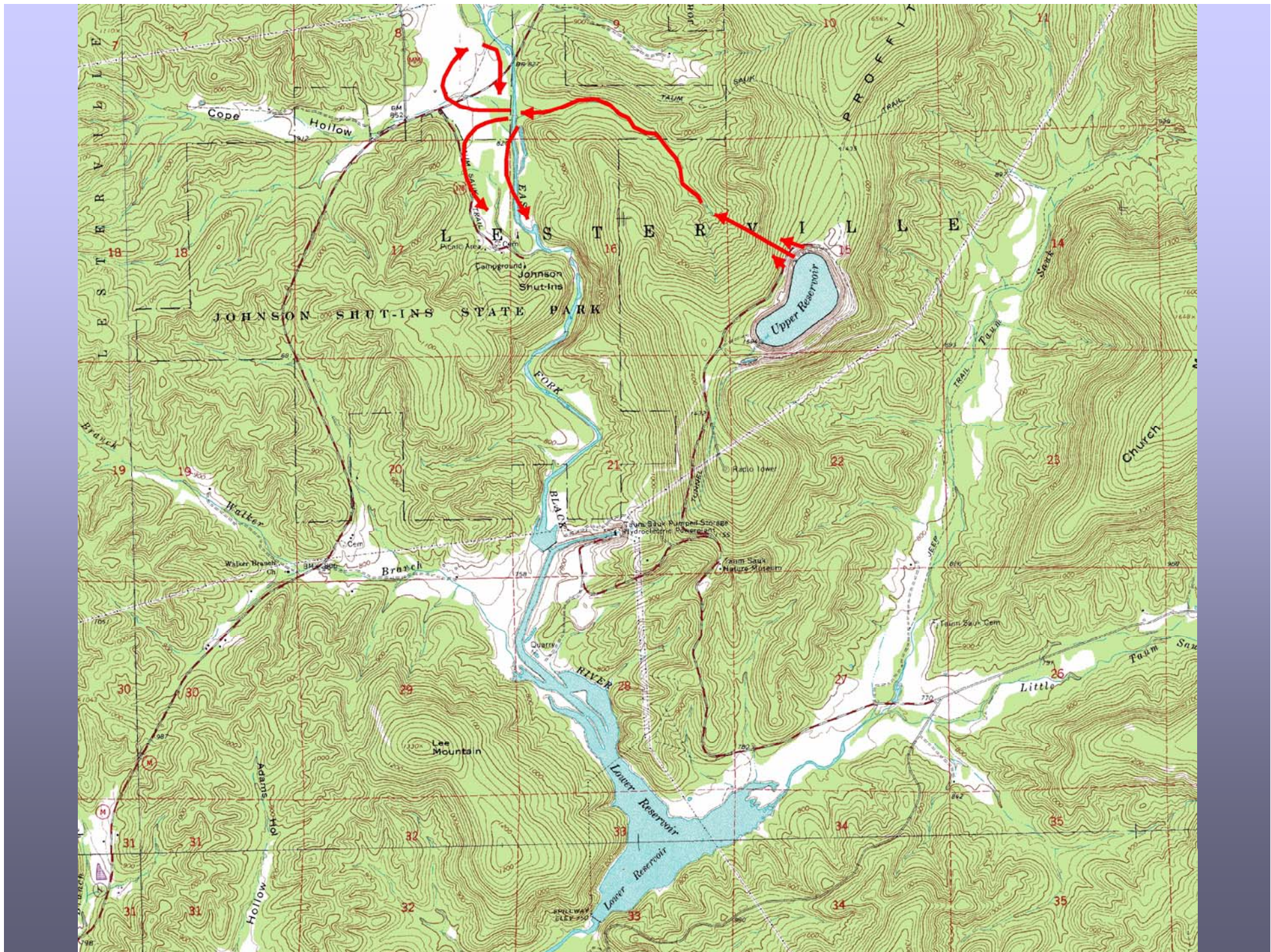
Water Resources Center

Dam and Reservoir Safety Program

December 22, 2005









## BREACH DATA

Top Width: 656 feet

Bottom Width: 496 feet

Reservoir Drained in 12 minutes

Max. Flow: 289,000 cfs\*

Peak Velocity: 45 fps\*

Depth of Flow: 19 feet\*

\* Measured at confluence of East Fork of Black River

## SITE DATA

Reservoir Area: 55 acres

Max. Storage: 5200 acre-feet

Reservoir Depth: 90+ feet

Outlet Tunnel Diameter: 27 feet

Total Head: 451 feet

Generating Capacity: 450 MW

# CROSS SECTION OF DAM

