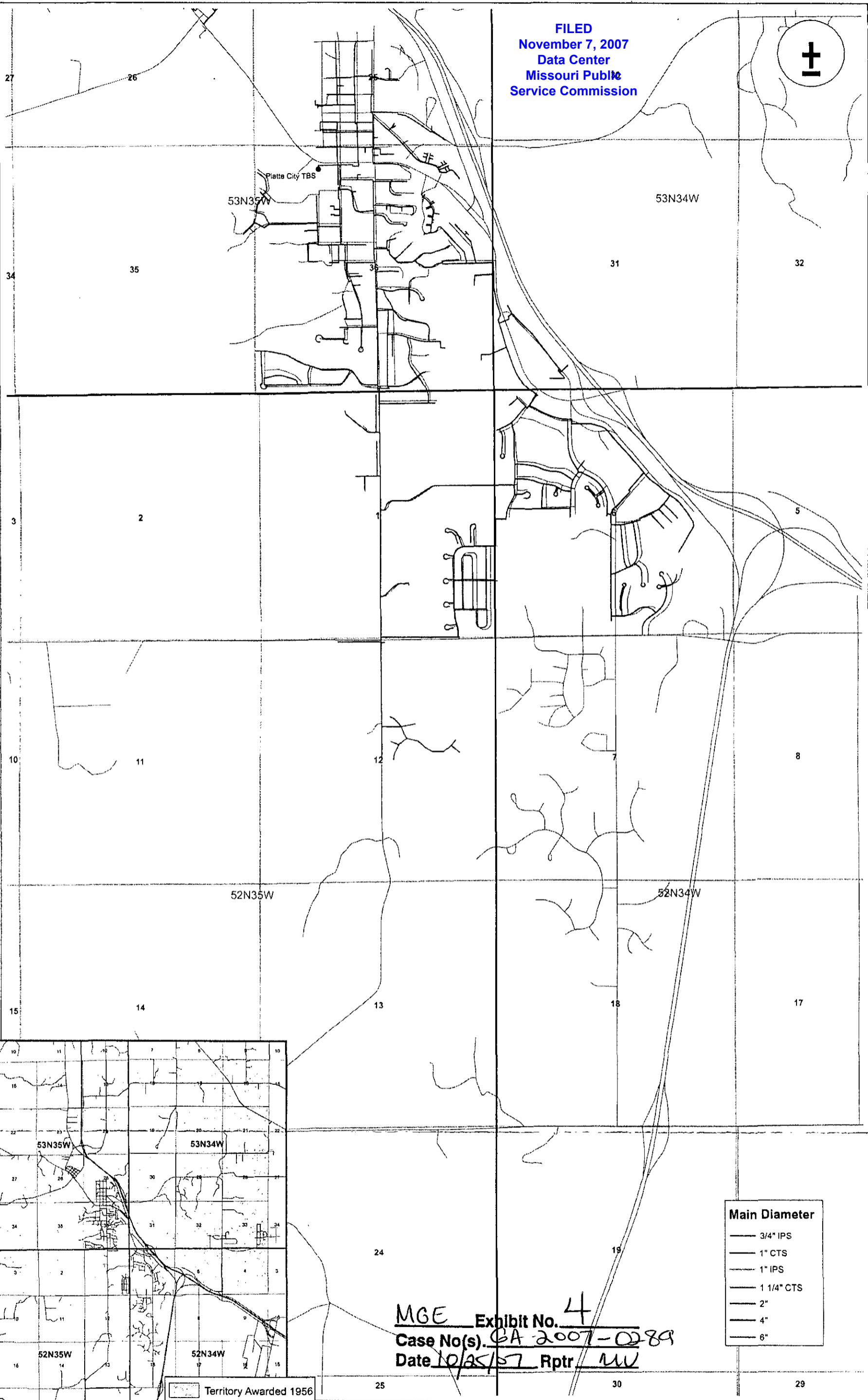
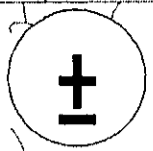


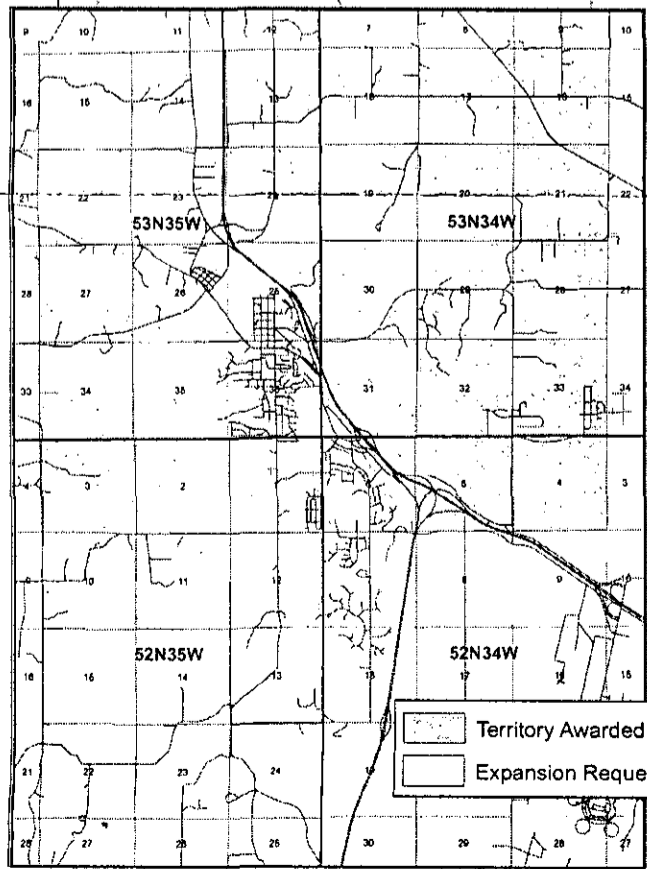
FILED
November 7, 2007
Data Center
Missouri Public
Service Commission



Main Diameter	
—	3/4" IPS
—	1" CTS
—	1" IPS
—	1 1/4" CTS
—	2"
—	4"
—	6"

MGE Exhibit No. 4
Case No(s) GA 2007-0289
Date 10/25/07 Rptr WW

Territory Awarded 1956
 Expansion Requested



The Empire District Gas Company		Project Information
Location of Facilities in Section 6 T52N34W; Sections 25, 35, & 36 T53N35W; and Sections 1 & 12 T52N35W		District: Platte City
Drawn By:		Scale: None
Checked By:		Date: August 16, 2007