

**BEFORE THE PUBLIC SERVICE COMMISSION
OF THE STATE OF MISSOURI**

In the Matter of the Application of Summit Natural Gas)
Of Missouri Inc., for Permission and Approval and a)
Certificate of Convenience and Necessity to Construct,) **File No. GA-2017-0016**
Install, Own, Operate, Maintain, and Otherwise Control)
And Manage a Natural Gas Distribution System to)
Provide Gas Service in Various Counties as an)
Expansion of its Existing Certificated Areas.)

ORDER NUNC PRO TUNC

Issue Date: May 15, 2017

Effective Date: May 15, 2017

On April 13, 2017, the Commission issued its *Order Granting Certificate of Convenience and Necessity* that went into effect on May 13, 2017. Ordered Paragraph 1 incorrectly omitted Wright County. This order corrects the Commission's April 13, 2017 order *nunc pro tunc* to state:

1. Summit Natural Gas of Missouri, Inc., is granted permission, approval, and a certificate of convenience and necessity to construct, install, own, operate, maintain, control and manage a natural gas distribution system to provide gas service for the public in Barry, Daviess, Laclede, Lawrence, Pettis, Stone, Taney, Webster, and Wright Counties, Missouri. The description shall be as detailed in Appendix B-Amended Maps of Staff's Memorandum, which shall be attached and incorporated into this order.

THE COMMISSION ORDERS THAT:

1. The *Order Granting Certificate of Convenience and Necessity*, issued on April 13, 2017, is corrected *nunc pro tunc*, as stated above.

2. This order shall be effective when issued.

BY THE COMMISSION



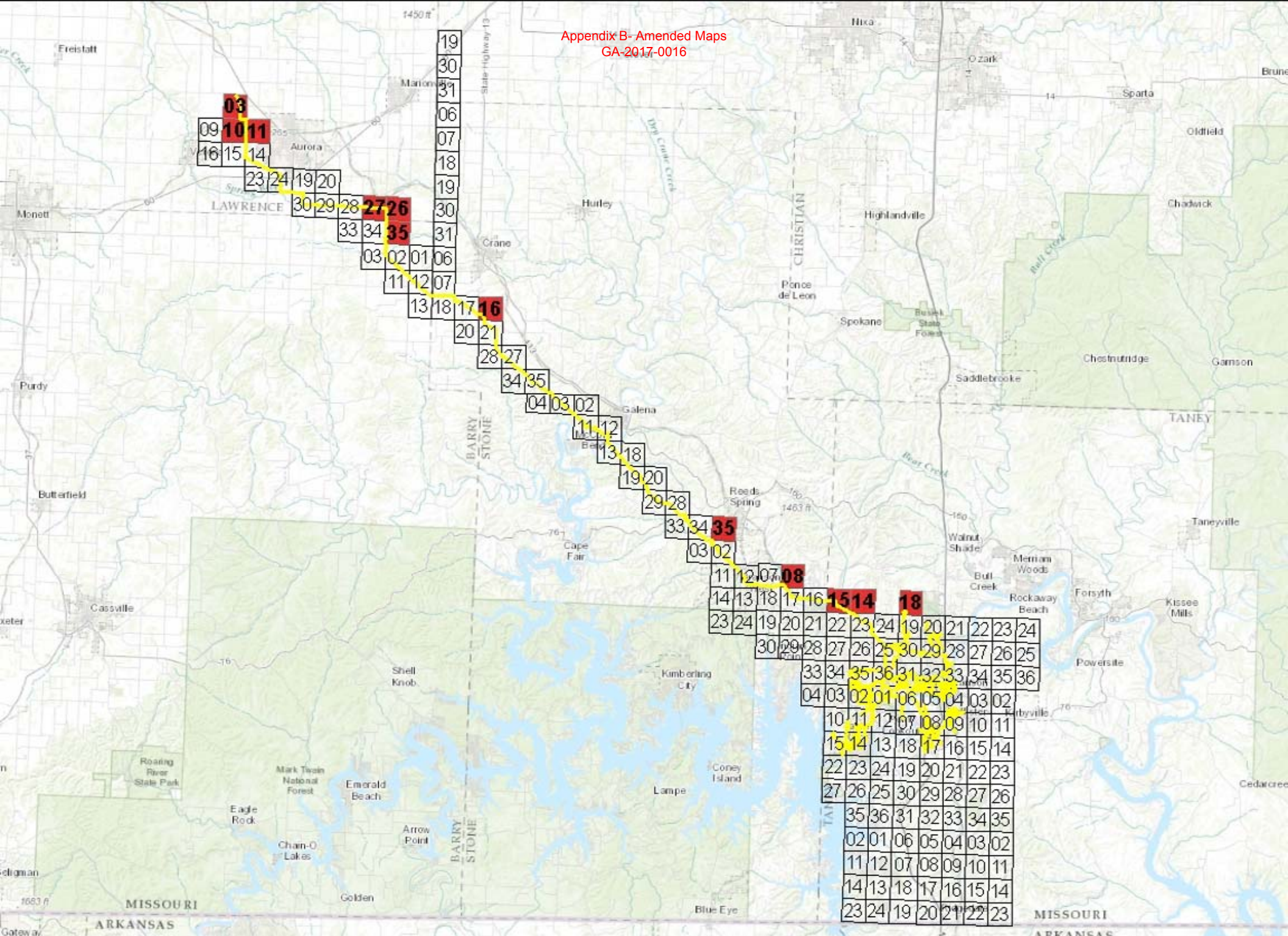
A handwritten signature in black ink that reads "Morris L. Woodruff".

Morris L. Woodruff
Secretary

Kim S. Burton, Senior Regulatory
Law Judge, by delegation of authority
pursuant to Section 386.240, RSMo 2000.

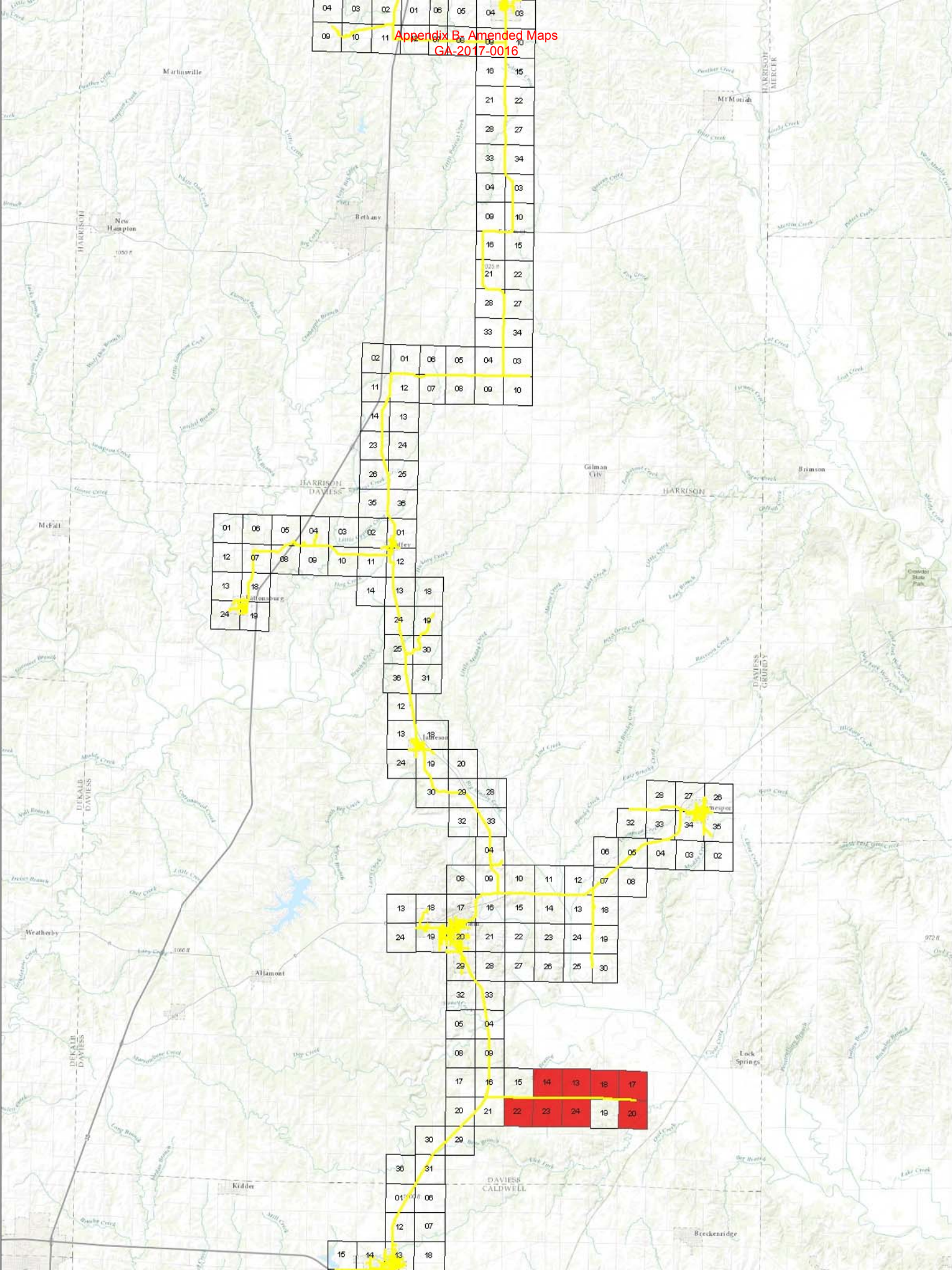
Dated at Jefferson City, Missouri,
on this 15th day of May, 2017.

Appendix B- Amended Maps
GA-2017-0016

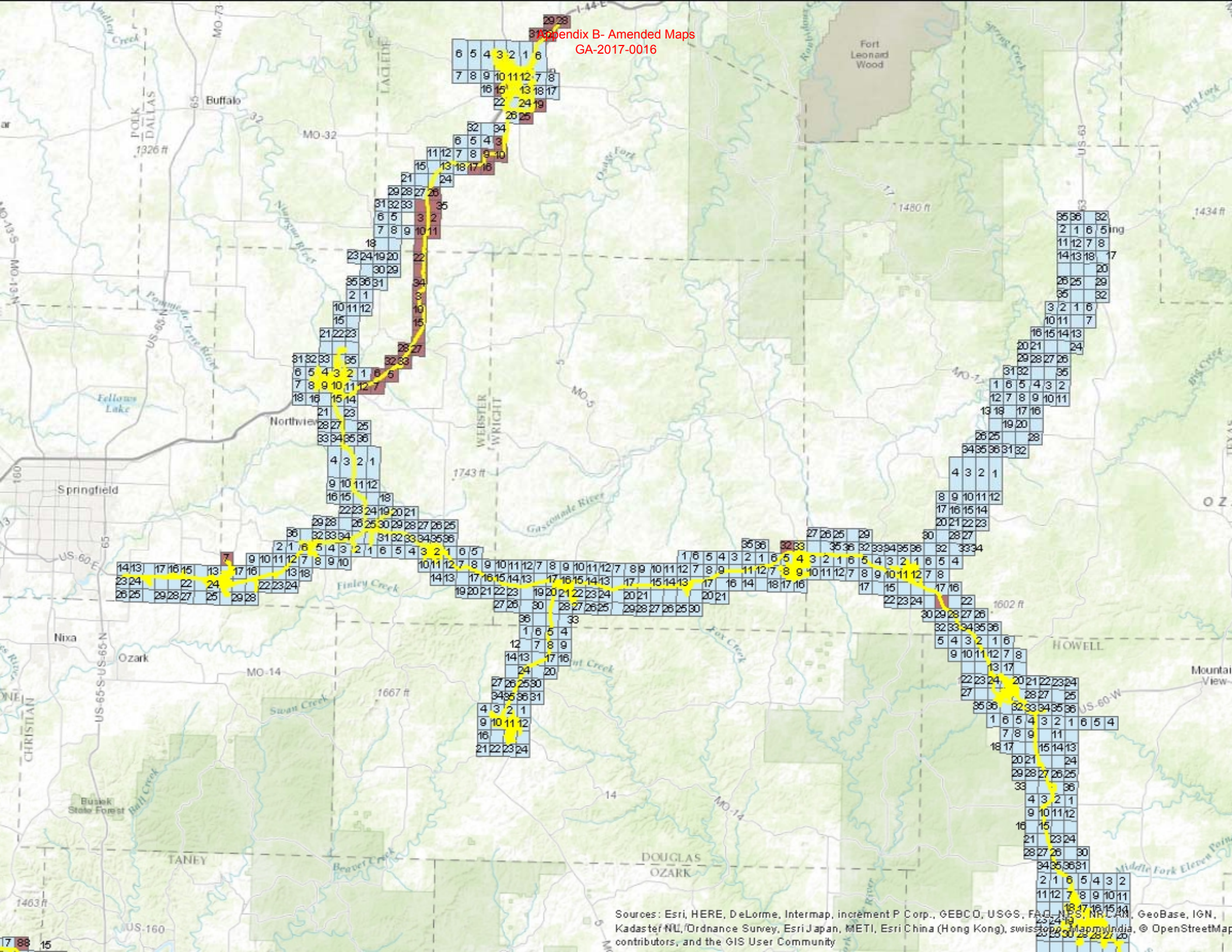


Sources: Esri, HERE, DeLorme, Intermap, increment P Corp., GEBCO, USGS, FAO, NPS, NRCAN, GeoBase, IGN, Kadaster NL, Ordnance Survey, Esri Japan, METI, Esri China (Hong Kong), swisstopo, MapmyIndia, © OpenStreetMap contributors, and the GIS User Community

Appendix B, Amended Maps
GA-2017-0016

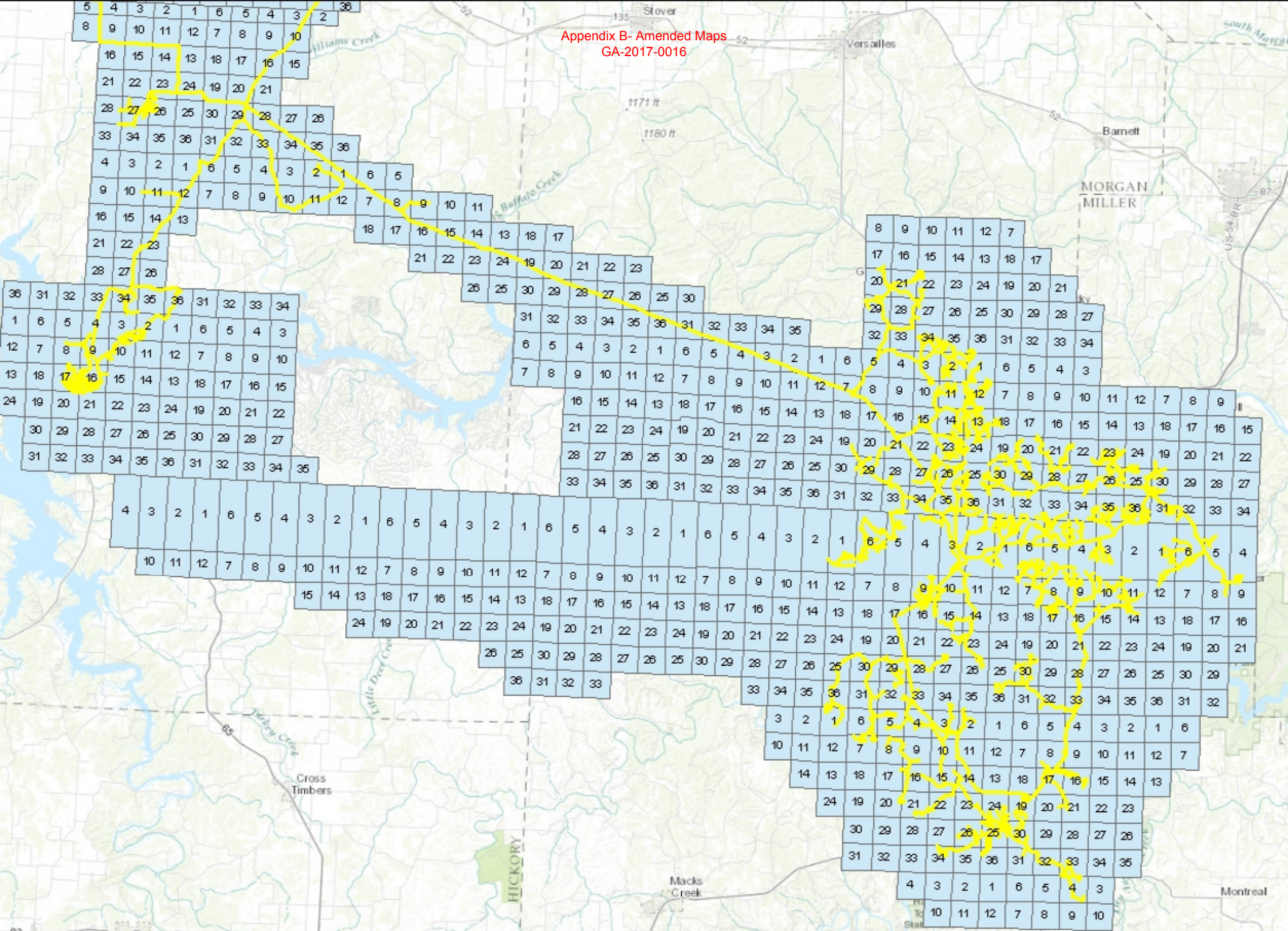


Appendix B- Amended Maps
GA-2017-0016



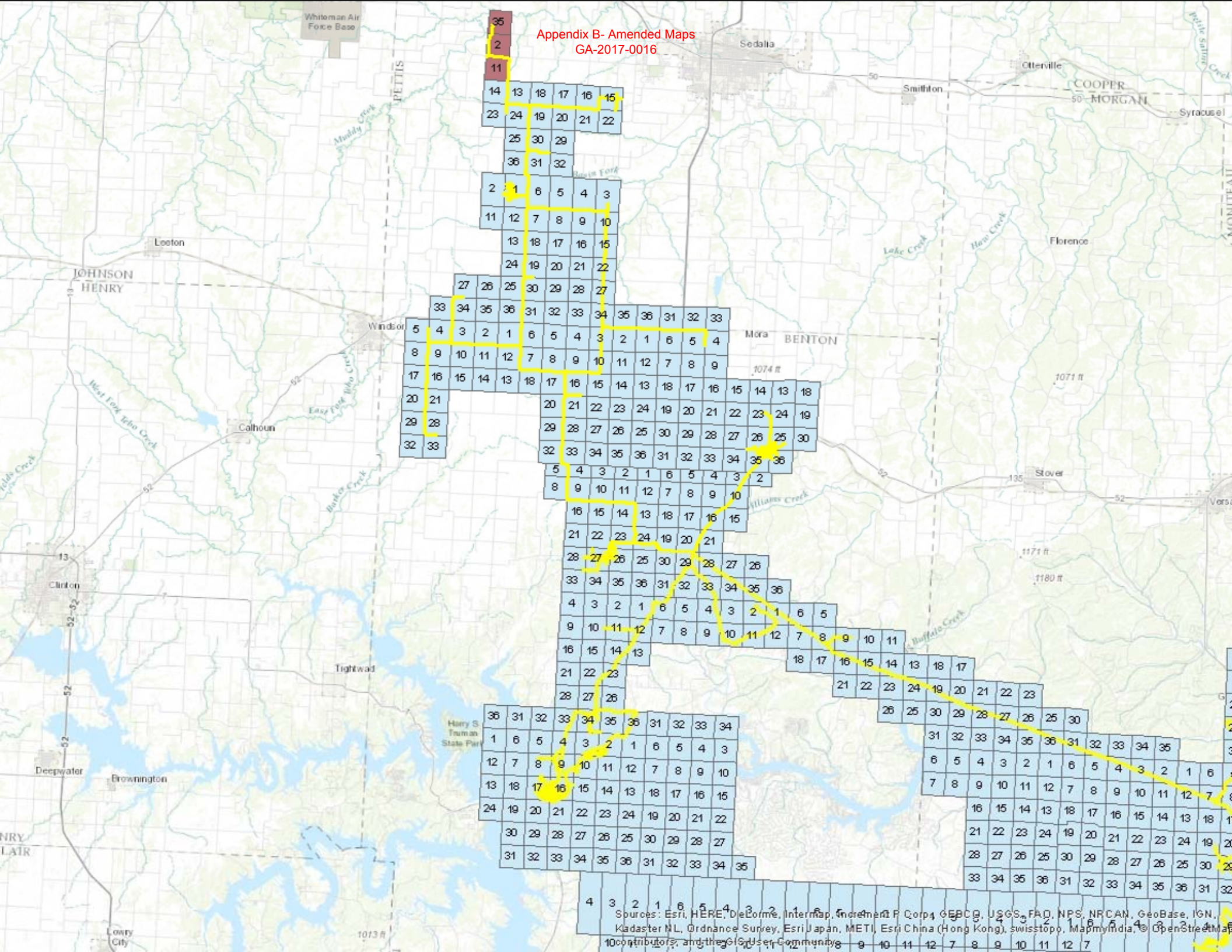
Sources: Esri, HERE, DeLorme, Intermap, increment P Corp., GEBCO, USGS, FAO, NPS, NRC, NRI, GeoBase, IGN, Kadaster NL, Ordnance Survey, Esri Japan, METI, Esri China (Hong Kong), swisstopo, Mapbox India, © OpenStreetMap contributors, and the GIS User Community

Appendix B- Amended Maps
GA-2017-0016



Sources: Esri, HERE, DeLorme, Intermap, increment P Corp., GEBCO, USGS, FAO, NPS, NRCAN, GeoBase, IGN, Kadaster NL, Ordnance Survey, Esri Japan, METI, Esri China (Hong Kong), swisstopo, MapmyIndia, © OpenStreetMap contributors, and the GIS User Community

Appendix B- Amended Maps
GA-2017-0016



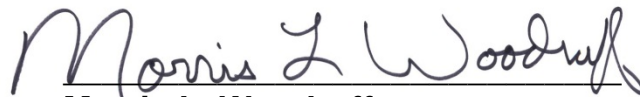
STATE OF MISSOURI

OFFICE OF THE PUBLIC SERVICE COMMISSION

I have compared the preceding copy with the original on file in this office and I do hereby certify the same to be a true copy therefrom and the whole thereof.

WITNESS my hand and seal of the Public Service Commission,
at Jefferson City, Missouri, this 15th day of May 2017.




Morris L. Woodruff
Secretary

MISSOURI PUBLIC SERVICE COMMISSION

May 15, 2017

File/Case No. GA-2017-0016

**Missouri Public Service
Commission**

Staff Counsel Department
200 Madison Street, Suite 800
P.O. Box 360
Jefferson City, MO 65102
staffcounsel@psc.mo.gov

Office of the Public Counsel

Hampton Williams
200 Madison Street, Suite 650
P.O. Box 2230
Jefferson City, MO 65102
opcservice@ded.mo.gov

**Missouri Propane Gas
Association**

Terry M Jarrett
514 E. High Street, Suite 22
Jefferson City, MO 65101
terry@healylawoffices.com

**Missouri Public Service
Commission**

Jeff Keevil
200 Madison Street, Suite 800
P.O. Box 360
Jefferson City, MO 65102
jeff.keevil@psc.mo.gov

**Summit Natural Gas of
Missouri, Inc.**

Dean L Cooper
312 East Capitol
P.O. Box 456
Jefferson City, MO 65102
dcooper@brydonlaw.com

**Summit Natural Gas of
Missouri, Inc.**

Russ Mitten
312 E. Capitol Ave
P.O. Box 456
Jefferson City, MO 65102
rmitten@brydonlaw.com

Enclosed find a certified copy of an Order or Notice issued in the above-referenced matter(s).

Sincerely,



**Morris L. Woodruff
Secretary**

Recipients listed above with a valid e-mail address will receive electronic service. Recipients without a valid e-mail address will receive paper service.