

Missouri Public Service Commission
Data Center
P.O. Box 360
Jefferson City, Missouri 65102-0360

MO 419-2651 (9-10)

FILED²

FEB 21 2017

Missouri Public
Service Commission

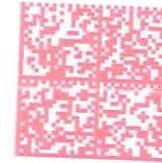
National Housing Trust
Legal Department
910 E. Broadway, Ste. 205
Columbia, MO 65201-4829

REFK1: 9352208345

UFT#D

652014829 CDD

FIRST CLASS

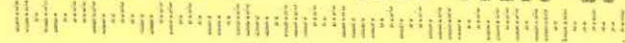


UNITED STATES POSTAGE
METHEY BOWLES
02 1M \$ 00.46⁵
0008006519 JAN 18 2017
MAILED FROM ZIP CODE 65109

NIXIE 631 FE 1 0002/16/17

RETURN TO SENDER
NOT DELIVERABLE AS ADDRESSED
UNABLE TO FORWARD

BC: 65102036060 *1216-08195-16-32



STATE OF MISSOURI
PUBLIC SERVICE COMMISSION

At a session of the Public Service
Commission held at its office
in Jefferson City on the 18th
day of January, 2017.

In the Matter of KCP&L Greater Missouri
Operations Company's Demand Side Investment
Mechanism Rider Rate Adjustment and True-Up
Required by 4 CSR 240.3.163(8).

)
)
)
)

File No. ER-2017-0166
Tracking No.: JE-2017-0110

**ORDER REGARDING DEMAND SIDE INVESTMENT MECHANISM
RIDER RATE ADJUSTMENT**

Issue Date: January 18, 2017

Effective Date: February 1, 2017

On December 1, 2016, KCP&L Greater Missouri Operations Company ("GMO" or "Company") submitted a tariff sheet with a February 1, 2017 effective date that adjusts the rate of the Company's Demand Side Investment Mechanism ("DSIM") rider under the Missouri Energy Efficiency Investment Act ("MEEIA"). The Commission issued notice of the filing, set an intervention deadline, and directed the Commission's Staff to submit a recommendation. No applications to intervene were received. On January 10, 2017, GMO filed a Tariff Substitute (Tracking No. JE-2017-0110) that incorporates language to clarify the effective period for the transition adjustments of MEEIA cost recovery and base rates to recovery through the DSIM. It also clarifies the cost recovery transition from Base rates to Total DSIM rates, effective February 22, 2017.

Commission Rules 4 CSR 240-20.093(4) and 4 CSR 240-3.163(8) require GMO to make semi-annual adjustments to its DSIM rates to reflect the amount of revenue that

has been over/under collected. The MEEIA mechanism rate is based on six months of projected costs (January 2017 through June 2017) and incentives with reconciliations from actual prior periods, including any Commission-ordered adjustments with interest. The DSIM rate adjustment submitted by GMO includes the performance incentive for the Company's MEEIA Cycle 1. The tariff sheet reduces the current residential DSIM rate from \$0.00162 per kWh to \$0.00139 per kWh. For a residential customer using 1,000 kWh, this will decrease the line item on a monthly bill by \$0.23 per month. For non-residential customers, the current DSIM rate of \$0.00589 increases to \$0.00751. For a non-residential customer, this will result in a monthly increase of \$1.62 for every 1,000 kWh used.

Staff filed a recommendation to approve the tariff sheet. Staff noted that the Company's DSIM filing includes recognition of the earned performance incentive award after evaluation, measurement, and verification of GMO's MEEIA program performance in Cycle 1. No responses to Staff's recommendation were received. Finding the filing to be reasonable, the Commission will approve the tariff sheet adjustment to GMO's DSIM rate.

THE COMMISSION ORDERS THAT:

1. Kansas City Power & Light Company's tariff filing, assigned Tariff Tracking No. JE-2017-0110, is approved. The tariff sheet approved is:

P.S.C. MO. No. 1
2nd Revised Sheet No. 138.7, Canceling 1st Revised Sheet No. 138.7.

2. This order shall become effective on February 1, 2017.



BY THE COMMISSION

Morris L. Woodruff

Morris L. Woodruff
Secretary

Hall, Chm., Stoll, Kenney, Rupp, and
Coleman, CC., concur.

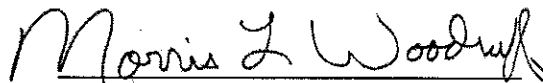
Burton, Senior Regulatory Law Judge.

STATE OF MISSOURI

OFFICE OF THE PUBLIC SERVICE COMMISSION

I have compared the preceding copy with the original on file in this office and I do hereby certify the same to be a true copy therefrom and the whole thereof.

WITNESS my hand and seal of the Public Service Commission, at Jefferson City, Missouri, this 18th day of January 2017.


Morris L. Woodruff
Secretary

MISSOURI PUBLIC SERVICE COMMISSION

January 18, 2017

File/Case No. ER-2017-0166

Missouri Public Service Commission
Staff Counsel Department
200 Madison Street, Suite 800
P.O. Box 360
Jefferson City, MO 65102
staffcounsel@psc.mo.gov

Office of the Public Counsel
James Owen
200 Madison Street, Suite 650
P.O. Box 2230
Jefferson City, MO 65102
opcservice@ded.mo.gov

AG Processing, Inc.
Legal Department
3100 Broadway
1209 Penntower
Kansas City, MO 64111

Brightergy, LLC
Legal Department
1712 Main Street, 3rd Floor
Kansas City, MO 64108

KCP&L Greater Missouri Operations Company
Roger W Steiner
1200 Main Street, 19th Floor
P.O. Box 418679
Kansas City, MO 64105-9679
roger.steiner@kcpl.com

Missouri Department of Natural Resources
Legal Department
1101 Riverside Drive
P.O. Box 176
Jefferson City, MO 65102-0176

Missouri Division of Energy
Legal Department
301 W. High St., Room 720
P.O. Box 1766
Jefferson City, MO 65102

Missouri Gas Energy (Laclede)
Legal Department
700 Market Street
St. Louis, MO 63101

Missouri Industrial Energy Consumers (MIEC)
Legal Department
211 N. Broadway, Suite 3600
St. Louis, MO 63102

Missouri Public Service Commission
Bob Berlin
200 Madison Street, Suite 800
P.O. Box 360
Jefferson City, MO 65102
bob.berlin@psc.mo.gov

National Housing Trust
Legal Department
910 E. Broadway, Ste. 205
Columbia, MO 65201-4829

Natural Resources Defense Council
Legal Department
20 North Wacker Drive, Suite 1600
Chicago, IL 60606

Renew Missouri
Legal Department
1200 Rogers St., Suite B
Columbia, MO 65201

Sam's East, Inc.
Legal Department
2001 SE 10th Street
Bentonville, AR 72716

Sedalia Industrial Energy Users Association
Legal Department
3100 Broadway, Suite 1209
Kansas City, MO 64111

Sierra Club
Legal Department
2101 Webster St., Ste. 1300
Oakland, CA 94612

Union Electric Company
Legal Department
1901 Chouteau Avenue
P.O. Box 66149, Mail Code 1310
St. Louis, MO 63166-6149
AmerenMOService@ameren.com


United for Missouri
Legal Department
P.O. Box 2193
Jefferson City, MO 65102

Wal-Mart Stores, Inc.
Legal Department
702 SW 8th Street
MS 0555
Bentonville, AR 72716

**West Side Housing
Organization**
Legal Department
919 West 24th Street
Kansas City, MO 64108
gortizfisher@westsidehousing.org

Enclosed find a certified copy of an Order or Notice issued in the above-referenced matter(s).

Sincerely,


Morris L. Woodruff
Secretary

Recipients listed above with a valid e-mail address will receive electronic service. Recipients without a valid e-mail address will receive paper service.