

FILED  
August 13, 2007  
Data Center  
Missouri Public  
Service Commission

## **REFERENCES**

## REFERENCES

Akinci, A., R.B. Herrmann, and C.J. Ammon, 1999. "Shallow Crustal Structure in the Central Conterminous United States from Teleseismic Receiver Functions." Saint Louis University, Department of Earth and Atmospheric Sciences.

Anderson, Neil L. 1998, "Subsurface Structure of the Commerce, English Hill and Related Faults in the Benton Hills of Southeastern Missouri: Collaborative Research, University of Missouri-Rolla, Department of Geology and Geophysics and Missouri Department of Natural Resources, Division of Geology and Land Survey." Retrieved January 23, 2006 from <http://erp-web.er.usgs.gov/reports/annsum/vol140/cu/g3038.htm>.

Anderson, J.E., JR., M.E. Bickford, A.L. Odom, and A.W. Berry, 1969. "Some Age Relations and Structural Features of the Precambrian Volcanic Terrane, St. Francois Mountains, Southeastern Missouri." Geological Society of America Bulletin, v. 80, pp. 1815-1818.

Berry, A.W., Jr., 1976, Proposed stratigraphic column for Precambrian volcanic rocks, western St. Francois Mountains, Missouri; in Klisvarsanyi, E.B., ed., Studies in Precambrian geology; Missouri Geological Survey Report of Investigations 61, p. 81-90.

Boss International and Brigham Young University, 1999, "SEEP2D" GMS Groundwater Modeling System.

Braile, L. W., W.J. Hinze, G.R. Keller, E.G. Lidiak, and J.L. Sexton, 1986. "Tectonic Development of the New Madrid Rift Complex, Mississippi Embayment, North America." Tectonics, Vol. 131, pp. 1-21.

Brunsden, D (1993) Mass movement: The research frontier and beyond: a geomorphological approach. Geomorphology, 7, pp 85-128.

Clendenin, C.W., C.A. Niewendorp, and G.R. Lowell, 1989. "Reinterpretation of Faulting in Southeast Missouri." Geology, Vol.17, pp. 217-220.

Delano, H. L., and Wilshusen, J. P., 2001, Landslides in Pennsylvania: Pennsylvania Geological Survey, 4th ser., Educational Series 9, 34 p.

D.F. VanDine (1996) Debris Flow Control Structures for Forest Engineering, British Columbia, Ministry of Forests, Research Program.

Gregory, 2003, "GSTABL7 with Stedwin, Slope Stability Analysis," Program Manual Version 2004, Geotechnical Engineering Software.

Kisvarsanyi, Eva B., 1981, "Granitic Ring Complexes and Precambrian hot-spot activity in the Saint Francois terrane, Midcontinent Region, United States." Geology, Vol. 8, pp. 43-47.

Kisvarsanyi, E.B. and A.W. Hebrank, 1982, "Field Trip Guidebook to the St. Francois Mountains and the Historic Bonne Terre Mine." Open File Report Series OFR-82-16-MR. Missouri Department of Natural Resources, Geological Survey and Resource Assessment Division, Rolla, MO, 39 pp.

IAEG Commission on Landslides (1990) Bulletin of the International Association of Engineering Geologists, 41

Langenheim, V.E. and T.G. Hildenbrand, 1997, "Commerce geophysical lineament-Its source, geometry, and relation to the Reelfoot rift and New Madrid seismic zone." GSA Bulletin, Vol. 109, no. 5, pp. 580-595.

Lowell, Gary R. 2000, "Eruptive style of mesoproterozoic A-type calderas in Southeastern Missouri, USA." Revista Brasileira de Geociencias, Vol. 30, pp. 745-751.

MWH, 2003 "Eighth FERC Part 12 Independent Consultant Safety Inspection Report". prepared for AmerenUE.

Meert, J.G. and W. Stuckey, 2002, "Revisiting the paleomagnetism of the 1.476 Ga St. Francois Mountains igneous province, Missouri." Tectonics, Vol. 21, No. 2, pp. 1-19.

Pierson, T.C. and J.E. Costa. 1987. A rheologic classification of subaerial sediment-water flows. In Debris flows/avalanches: process, recognition and mitigation. Reviews in Engineering Geology. J.E. Costa and G.F. Wieczorek (editors). Geol. Soc. Am., Vol. VII, pp. 1-12.

Pratt, W.P., M.A. Middendorf, I.R. Satterfield, and P.E. Gerdemann, 1992. "Geologic Map of the Rolla 1°x 2° Quadrangle, Missouri." Missouri Department of Natural Resources, Division of Geology and Land Survey, Publication I-1998.

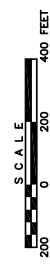
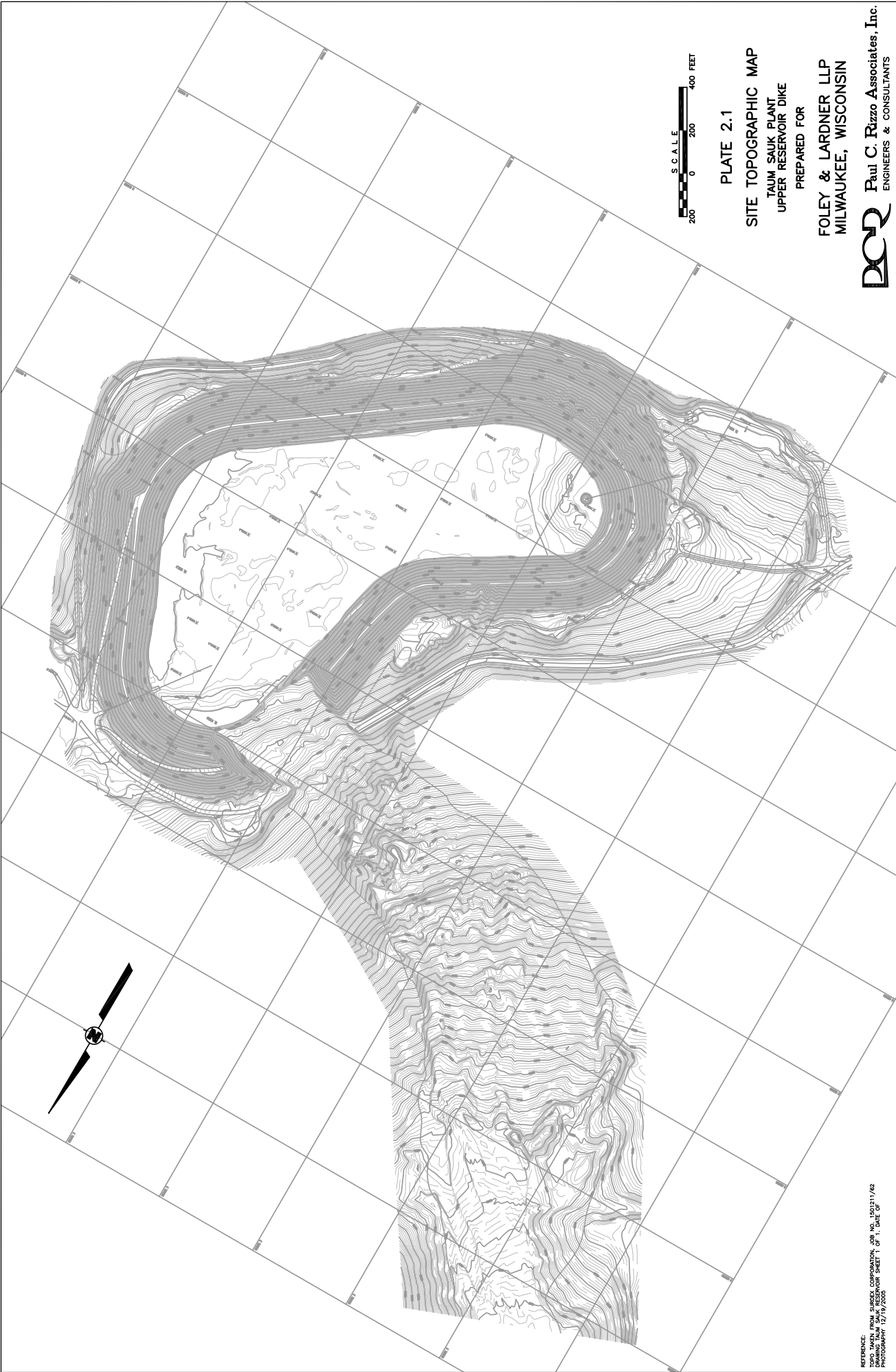
U.S. Department of Energy, 1992, "DOE Guideline, Root Cause Analysis Guidance Document," DOE-NE-STD-1004-92, Washington, DC.

Van Dine, D.F., 1996, Debris Flow Control Structures for Forest Engineering: Res. Br., B.C. Min. For., Victoria B.C. Work Pap. p8/1996.

# **PLATES**

1:1	PLOT
DRAWN	BY
B.F.R.	02/24/06
CHECKED BY	JPO
APPROVED BY	JPO
CAD FILE	06-3551-E303
NUMBER	2-24-06

REFERENCE:  
 TOPO TAKEN FROM SURVEY CORPORATION, JOB NO. 150121/82  
 PHOTOGRAPHY 12/19/2005



SCALE  
 0 200 400 FEET

PLATE 2.1  
 SITE TOPOGRAPHIC MAP  
 TAUM SAUK PLANT  
 UPPER RESERVOIR DIKE  
 PREPARED FOR

FOLEY & LARDNER LLP  
 MILWAUKEE, WISCONSIN

**PCOR** Paul C. Rizzo Associates, Inc.  
 ENGINEERS & CONSULTANTS

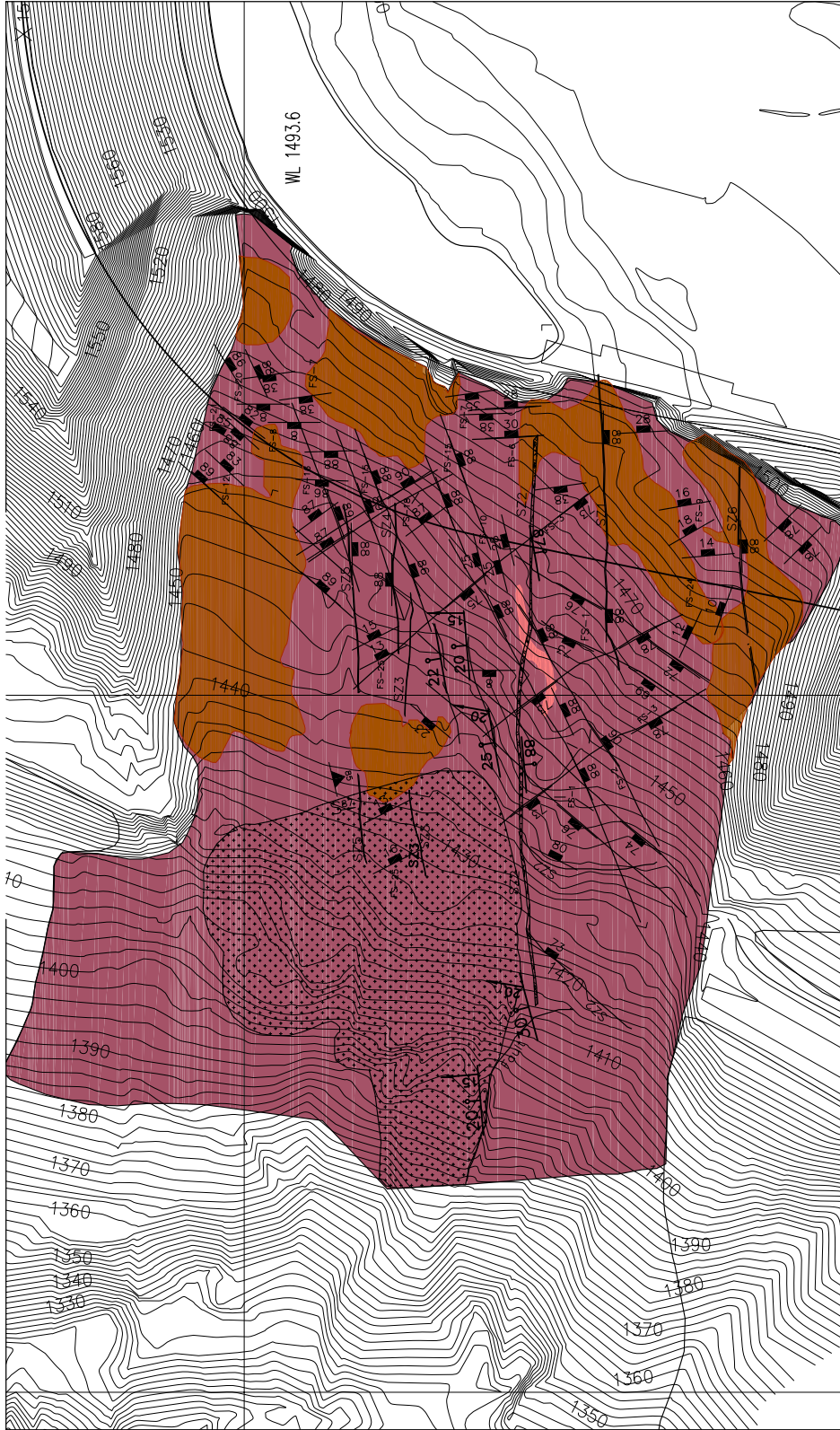
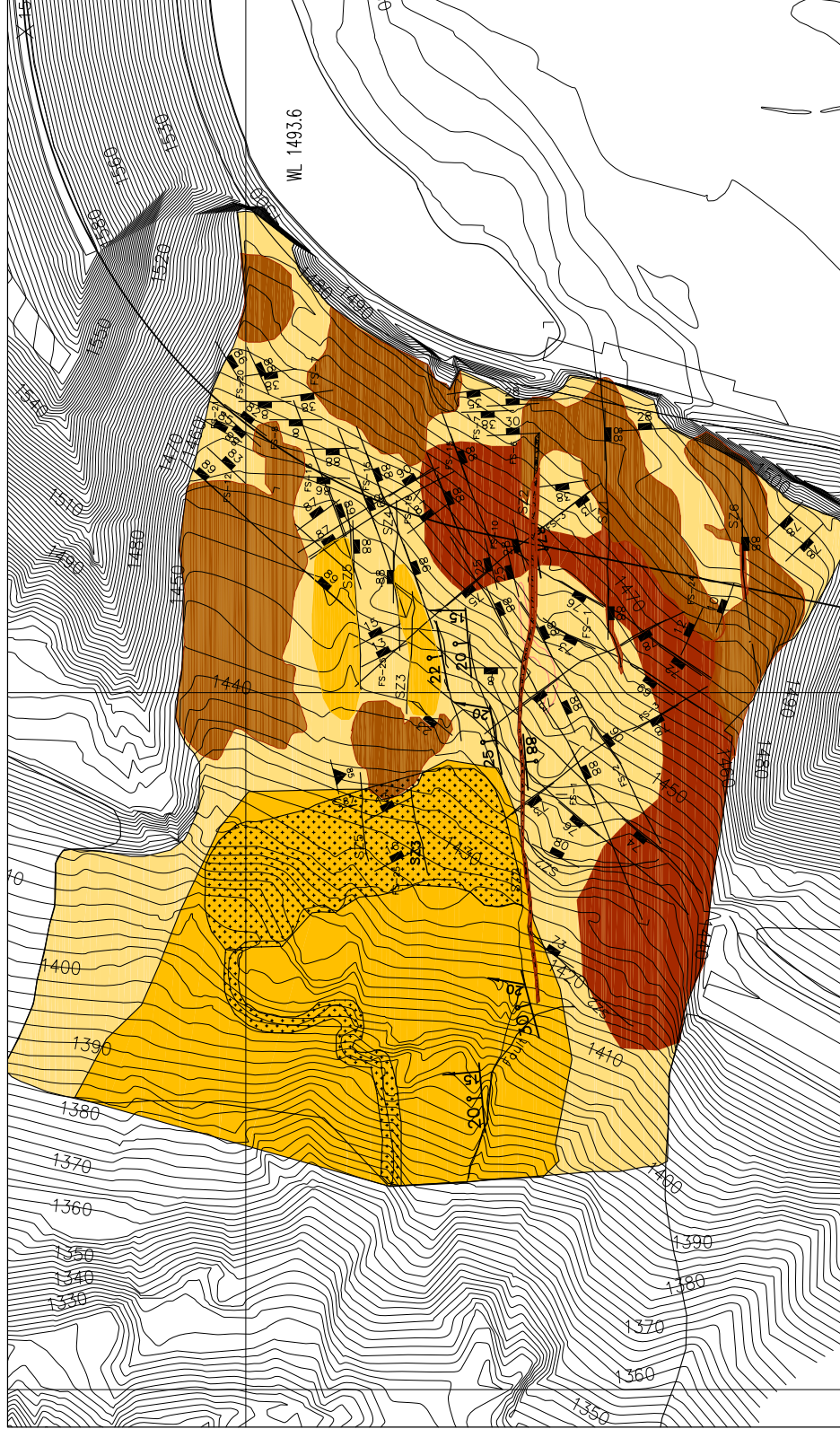


PLATE 3.1  
BREACH AREA FOUNDATION  
GEOLOGIC MAP  
TAUM SAUK PLANT  
UPPER RESERVOIR DIKE  
PREPARED FOR

**FOLEY & LARDNER LLP**  
MILWAUKEE, WISCONSIN  
**Paul C. Rizzo Associates, Inc.**  
ENGINEERS & CONSULTANTS





LEGEND:

- GOOD ROCK, Rock Mass Rating RMR 80-61.
- FAIR ROCK, rock mass rating 60-41.
- POOR ROCK, rock mass rating 40-21.
- Silt, residual and/or detrital soil. Residual soil contains abundant roots and is silt with clay (elasticity not rated). Detritus includes 1-6 inch rocks pressed into silt with clay. Soil is 0.1 to 1.6 feet thick. Some zones grade into weathered rock, approximately 20% of foundation area is covered with soil.
- Breccia/damage zone.
- Baked zone recrystallized by contact metamorphism.

FEATURE TYPE (F=Fracture, SZ=shear zone, sense of offset not determined)  
F-22- GEOLOGIC FEATURE NUMBERS (NOTE: Descriptions included in tables)

FEATURE NUMBER

- 00 - Dip and dip direction of banding.
- 01 - Dip and dip direction of fracture.
- 02 - Dip and dip direction of inclined fault.
- 03 - Left lateral apparent offset.
- 04 - Right lateral apparent offset.
- 05 - Plunge and plunge direction of slickensides.

PLATE 3.2  
BREACH AREA FOUNDATION  
ENGINEERING PROPERTIES MAP

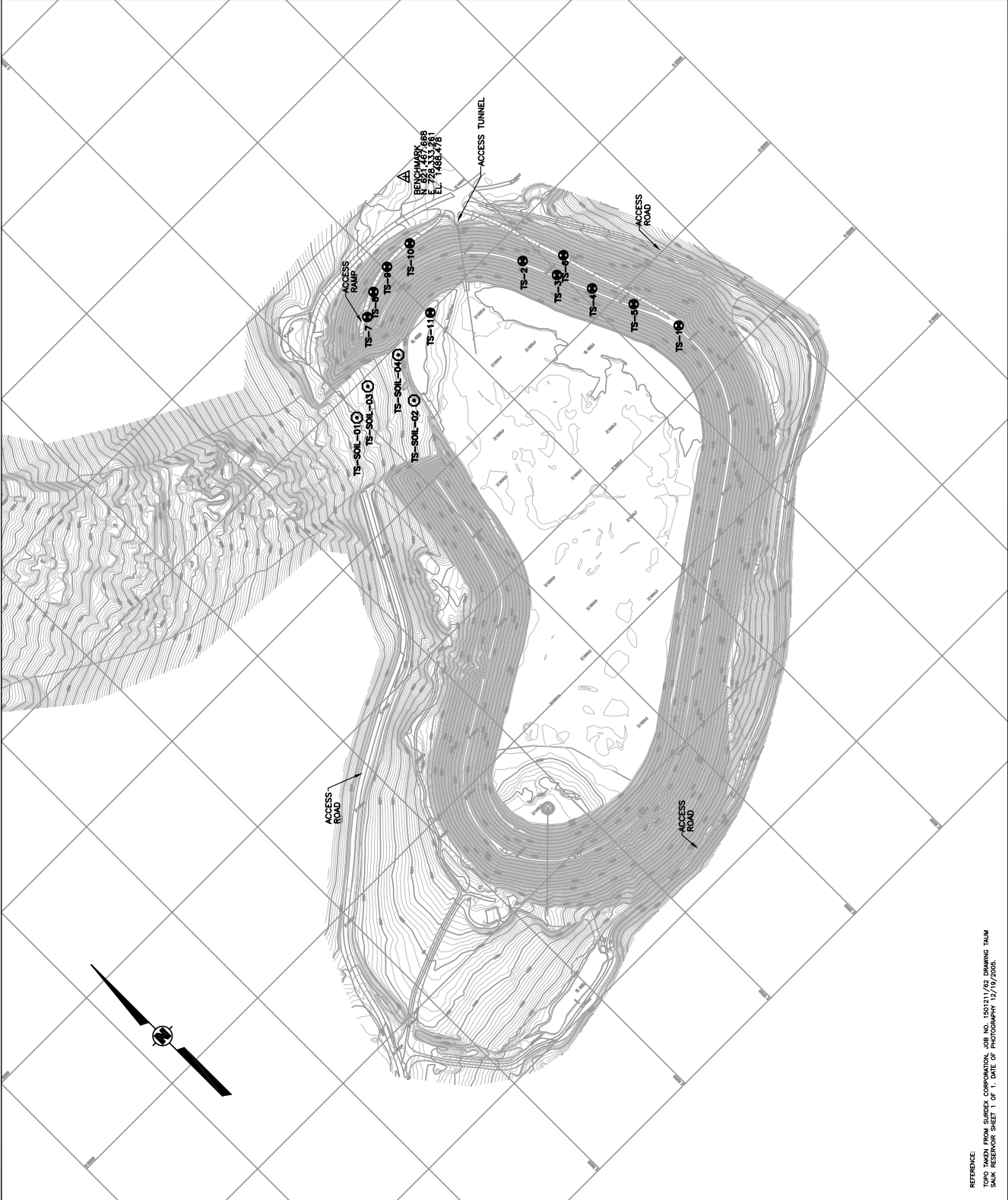
TAUM SAUK PLANT  
UPPER RESERVOIR DIKE  
PREPARED FOR

FOLEY & LARDNER LLP  
MILWAUKEE, WISCONSIN



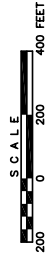
Paul C. Rizzo Associates, Inc.  
ENGINEERS & CONSULTANTS

PLOT	1:1
DRAWN	JFB
BY	02/20/06
CHECKED BY	JPO
APPROVED BY	JPO
CAD FILE	06-3551-E304
NUMBER	2-24-06
	2-24-06



# LEGEND

- TS-SOIL-01 PCRA SOIL SAMPLE LOCATION AND DESIGNATION
- TS-1 PCRA BORING LOCATION AND DESIGNATION



## PLATE 7.1

BORING LOCATION PLAN  
TAUM SAUK PLANT  
UPPER RESERVOIR DIKE  
PREPARED FOR

FOLEY & LARDNER  
MILWAUKEE, WISCONSIN

**DCR** Paul C. Rizzo Associates, Inc.  
ENGINEERS & CONSULTANTS

REFERENCE:  
TOPO TAKEN FROM SURGED CORPORATION, JOB NO. 1501211/62 DRAWING TAUM  
SAUK RESERVOIR SHEET 1 OF 1, DATE OF PHOTOGRAPHY 12/19/2005.