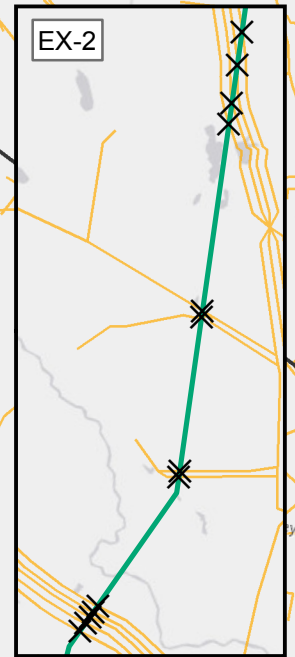
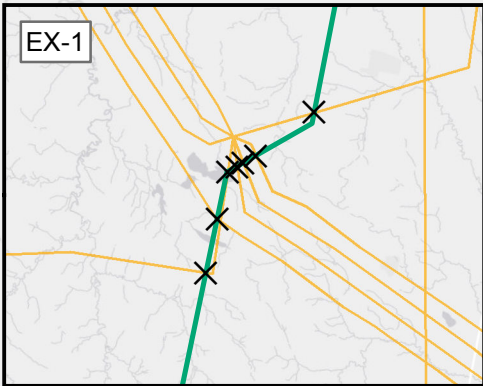


Western Alberta HVDC Transmission Line
In Service: 12/ 2015

Eastern Alberta HVDC Transmission Line
In Service: 2/ 2015



Legend:

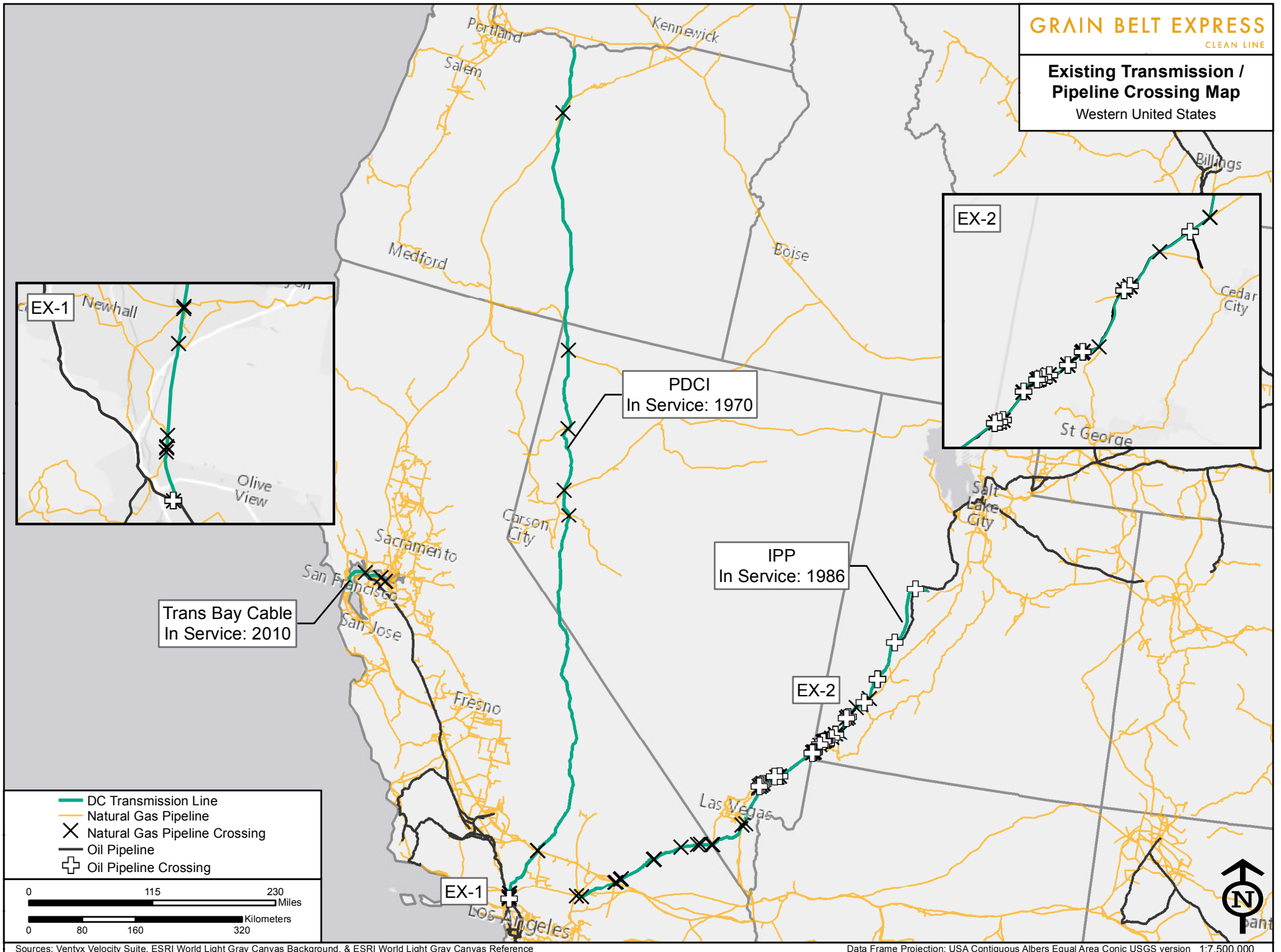
- DC Transmission Line
- Natural Gas Pipeline
- Natural Gas Pipeline Crossing
- Oil Pipeline
- Oil Pipeline Crossing

Scale:

0 30 60 Miles

0 20 40 80 Kilometers

Existing Transmission / Pipeline Crossing Map
Western United States



Trans Bay Cable
In Service: 2010

PDCI
In Service: 1970

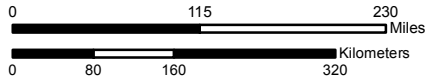
IPP
In Service: 1986

EX-2

EX-2

EX-1

- DC Transmission Line
- Natural Gas Pipeline
- ✕ Natural Gas Pipeline Crossing
- Oil Pipeline
- ⊕ Oil Pipeline Crossing



Sources: Ventyx Velocity Suite, ESRI World Light Gray Canvas Background, & ESRI World Light Gray Canvas Reference

Data Frame Projection: USA Contiguous Albers Equal Area Conic USGS version 1:7,500,000