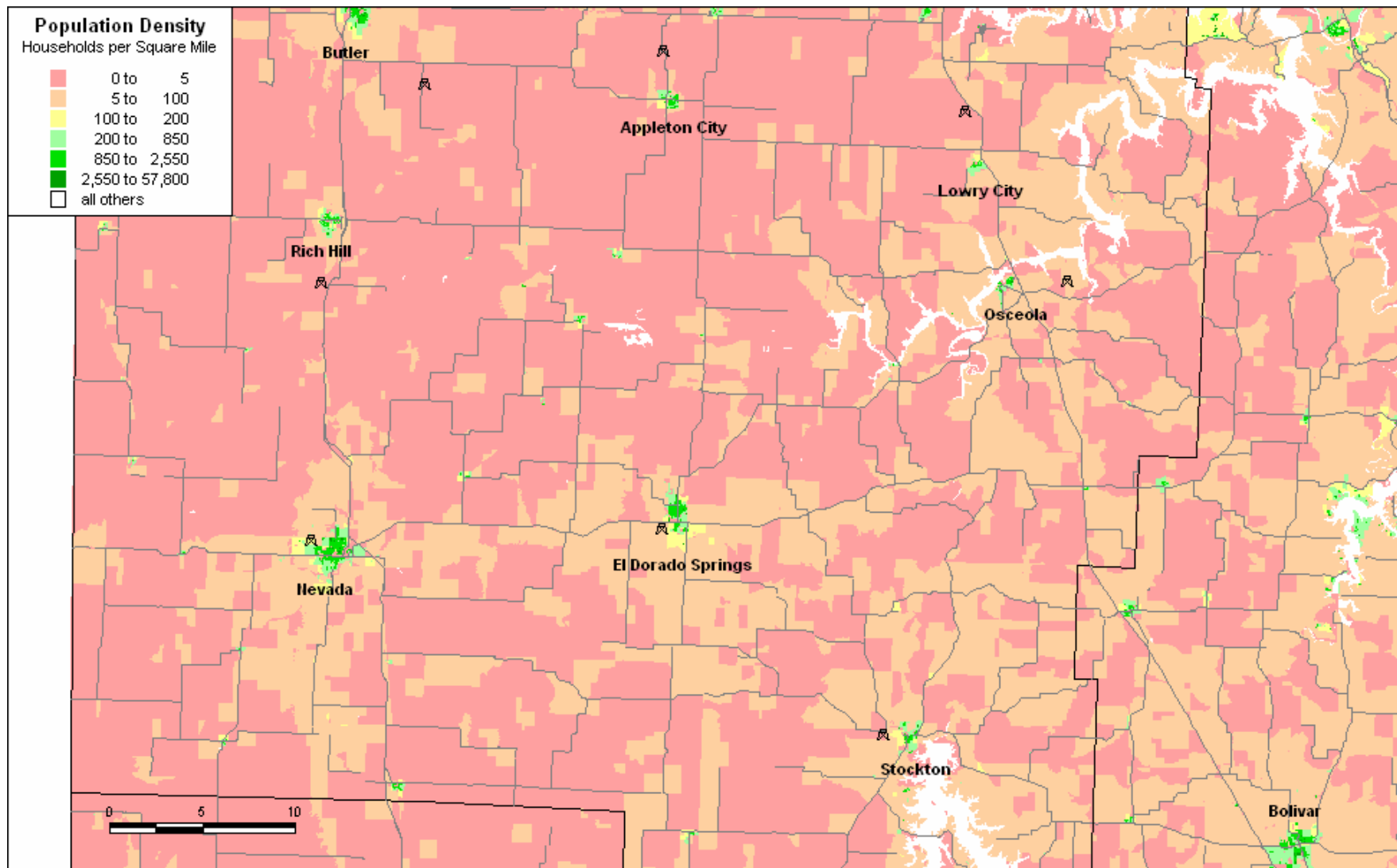


BEFORE THE PUBLIC UTILITIES COMMISSION
OF THE STATE OF MISSOURI

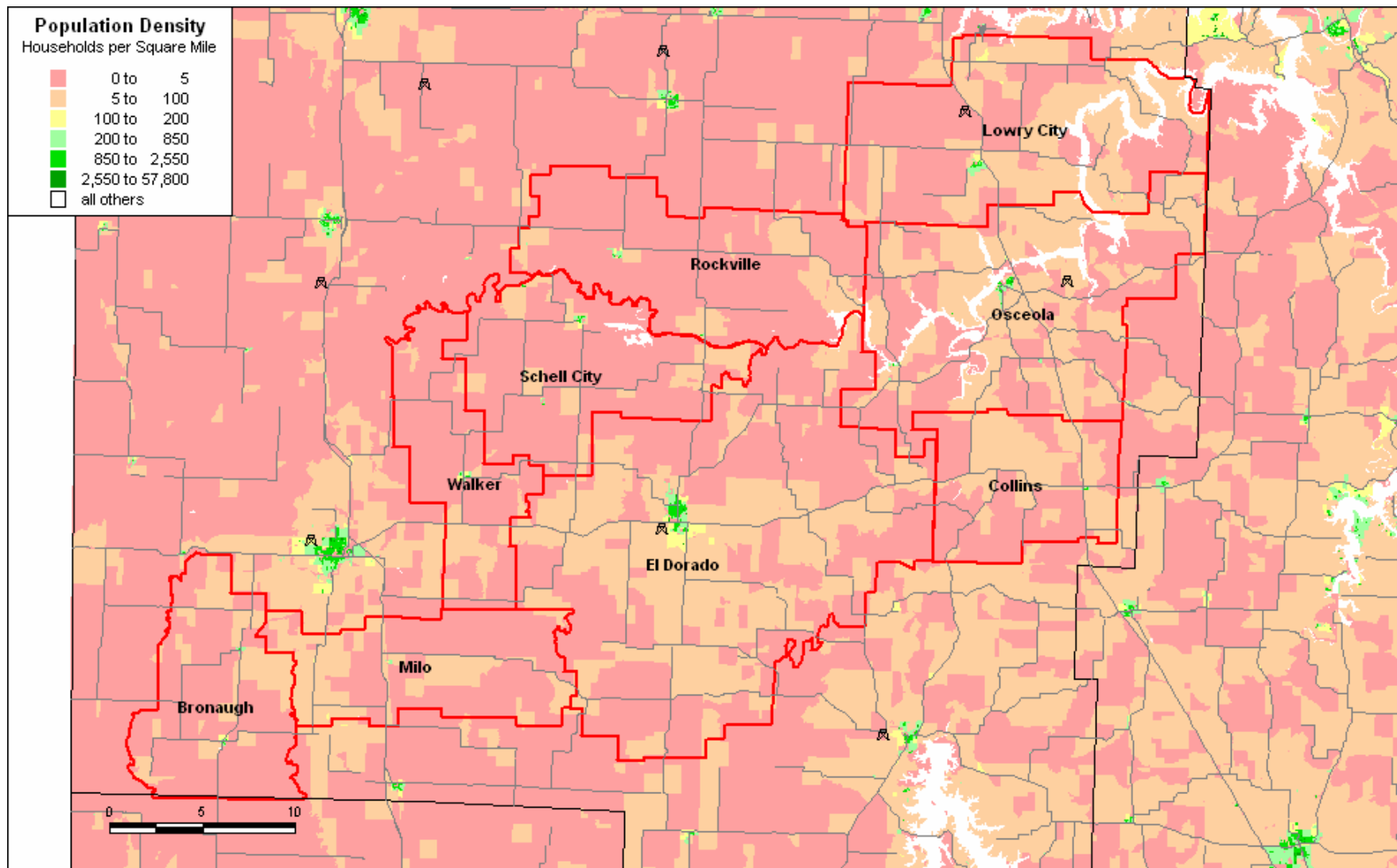
Case No. TO-2004-0527

Schedules 2-5 for the Testimony of
Glenn H. Brown
September 15, 2004

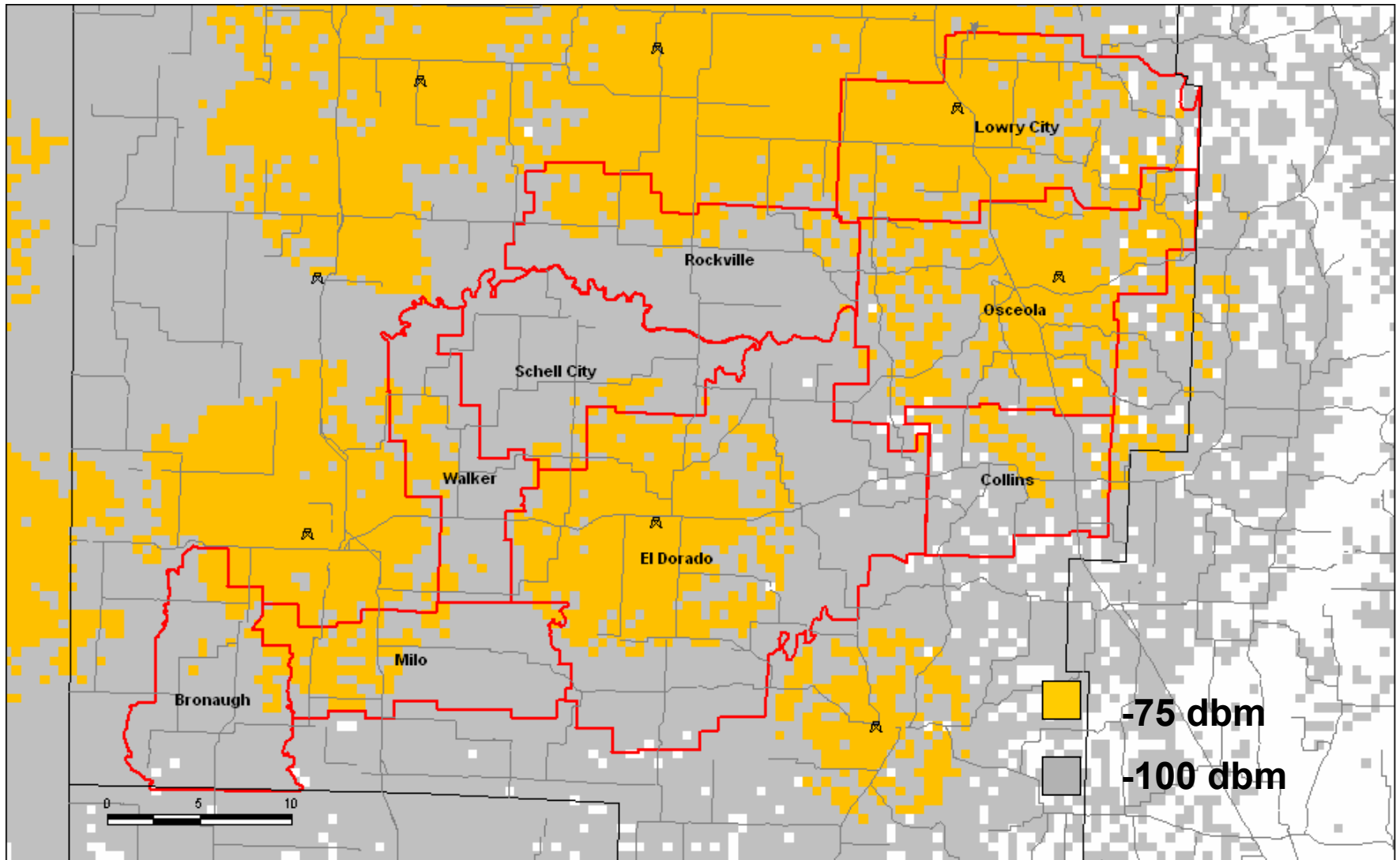
Schedule GHB-2



Schedule GHB-3



Schedule GHB-4



Schedule GHB-5

Signal Strength Summary

	Percentage with Signal Strength			
	Greater than -75 dbm		Greater than -100 dbm	
Wire Center	Households	Area	Households	Area
Bronaugh	14.2%	10.4%	100.0%	100.0%
Collins	1.1%	0.6%	99.8%	99.7%
El Dorado	73.4%	30.1%	100.0%	100.0%
Lowry City	59.7%	65.0%	99.6%	99.0%
Milo	32.1%	21.9%	100.0%	100.0%
Osceola	47.5%	36.2%	99.9%	99.8%
Rockville	7.4%	13.6%	100.0%	100.0%
Schell City	1.8%	3.9%	100.0%	100.0%
Walker	13.8%	9.0%	100.0%	100.0%