

Kings Point Wind Project

Barton, Dade, Jasper and Lawrence Counties, Missouri



Project Progress Report No. 18

January 2021

****Indicates Confidential****

HC*Indicates Highly Confidential*HC

*Empire District
602 S. Joplin Ave.
Joplin, MO 64802*

Kings Point Wind Project

Project Progress Report No. 18

January 2021

Contents

1.0	Summary	1
2.0	Safety.....	1
3.0	Project Schedule.....	2
4.0	Development Activities	2
5.0	Construction Activities	3
6.0	Project Cost Report	4
7.0	Progress Photos.....	6
8.0	Appendices.....	8

1.0 Summary

The focus of efforts during January was turbine erection and commissioning. As of the end of the month, fifty-one turbines have been topped out, and the EPC contractor has submitted forty-one turbine mechanical completion certificates. Vestas began turbine commissioning this month and completed final commissioning of fourteen turbines. There were two near misses, no first aid incidents, two property damage incidents, and one OSHA recordable incident on the project this month.

2.0 Safety

As of January 31st, 2021, there are 231 personnel on site, and cumulative man-hours worked are 371,729. There have been two OSHA-recordable incidents to date. The project reports the following safety incidents for January:

Period	Near Miss	Property Damage	First Aid	OSHA Recordable
January 2021	2	2	0	1
To Date	17	53	13	2

Near miss:

- While lifting a blade, the counterweight of the blade gripper struck another blade resting in the blade stand. Upon inspection, Vestas discovered no damage to the struck blade.
- An EPC subcontractor was hauling an excavator on a flatbed trailer, and the truck and trailer left the roadway and became stuck in mud.

Property damage:

- An EPC team member was operating a pickup truck on a muddy access road and was maneuvering the vehicle close to the edge of the road to keep distance from a turbine component staged nearby. As the truck approached the edge of the road, it lost traction and slid sideways of the road, striking some crane mats staged near the side of the road.
- An EPC team member was operating a pickup truck and trailer on a turbine access road and attempted to pass a parked pickup truck belonging to the Turbine Supplier. The trailer struck the rear quarter of the parked pickup truck, breaking the taillight.

OSHA recordable:

- An EPC team member was cleaning out the chute of a grout mixer but was not aware that the mixer was running. The mixer paddles caught the team member's hand, lacerating and fracturing a finger. The laceration required stitches. The EPC contractor changed their procedure

for this task to require employees verify that the portable generator is off and that the grout mixer has been unplugged prior to cleaning.

Mortenson has continued to revise its site-specific coronavirus plan, as required. There was one EPC team member and four EPC subcontractors observing quarantine protocols as of the end of January.

3.0 Project Schedule

The anticipated substantial completion date is in March 2021. Forward risk to erection and completion schedules remains if additional delivery delays occur and/or future weather conditions are worse than expected.

For detailed schedule information, refer to the monthly progress report from Solas in the Appendices to this report.

4.0 Development Activities

With the exception of wildlife permitting and interconnection, development activities are nearly complete for Kings Point. Both of those development activities are expected to be completed within the first year of commercial operation.

5.0 Construction Activities

This is the status of construction activities as of the end of January:

- Access road construction complete.
- All turbine foundations placed and backfilled.
- Electrical activities:
 - Collection system installation complete.
 - Three of six collection circuits energized.
 - Substation:
 - Completed November 18th.
 - Generation tie line:
 - Completed November 17th.
- Erection:
 - Completed offloading of turbine components on December 20th.
 - First turbine topped out on September 30th.
 - 51 turbines topped out.
 - 41 turbine mechanical completion certificates have been submitted.
- Commissioning:
 - Turbine commissioning commenced.
 - 14 turbines fully commissioned.
- Restoration:
 - Restoration activities continued.

The following major construction activities are planned for January:

- Collection system:
 - Energize remaining collection circuits.
- Turbine erection:
 - Continue turbine top out.
 - Continue turbine mechanical completions.
- Commissioning:
 - Continue commissioning completed turbines.
- Restoration:
 - Continue all restoration activities.

Construction issues identified:

- Surge arrester failures: There were three surge arrester failures at North Fork Ridge in December. The manufacturer has confirmed to Mortenson that the arresters were part of a defective lot. Arresters from the same lot were supplied and installed at Kings Point. Surge

arresters on three of the six collection circuits have been replaced, and the remainder are scheduled to be replaced in February.

- T-11 broken anchor bolt: During tensioning, an anchor bolt on T-11 broke. Mortenson was able to successfully remove and replace the bolt. The bolt was then tensioned to the specified torque.
- Ice storm: Site impacted by hazardous weather January 1st to January 4th.
- COVID-19: Temporary impact to personnel availability for tower wiring.

6.0 Project Cost Report

Expenditures during January totaled ** [REDACTED] **. The to date spend on the project was reduced due to reversal of incorrect accruals in December. Project expenditures to date are ** [REDACTED] ** of the total budgeted expenditure of ** [REDACTED] **. The current estimate at completion is ** [REDACTED] **. The major drivers of this variance are increases in the Purchase and Sale Agreement Annex 1 costs, specifically those for schedule maintenance and for construction of access roads and the generation tie line. These are partially offset by a substantial favorable variance in interconnection costs.

Kings Point *HC* Highly Confidential in its Entirety *HC*

7.0 Progress Photos



Picture 1. Kings Point at sunset.



Picture 2. Crane assembly following a breakdown and move.



Picture 3. Site activities were again impacted by wintery weather.

8.0 Appendices



Kings Point Wind



Monthly Construction Report

January 2021



Photo from T-96 looking at T-90

Barton, Jasper, Dade and Lawrence Counties, Missouri



TABLE OF CONTENTS

Sections

- Section 1: Monthly Construction Summary
- Section 2: Construction Budget Status/Variations (JV)
- Section 3: Schedule Variations/Milestone Schedule Update
- Section 4: Transmission/Interconnection Update
- Section 5: Delivery Status of Equipment
- Section 6: Job Progress Photos

Attachments

- Attachment 1: Contractor Monthly Report
- Attachment 2: Turbine Supplier Monthly Report



Section 1

Monthly Construction Summary

INTRODUCTION

Construction of the Kings Point wind project (the “Project”), located in Barton, Jasper, Dade & Lawrence Counties, Missouri, began on February 10, 2020. The 149.4 MW name plate capacity Project is comprised of the following major elements:

- 12 – Vestas model V110 2.0 MK10C 120-meter hub height wind turbine generators
- 57 – Vestas model V120 2.2 MK11D 122-meter hub height wind turbine generators
- Site clearing, project string roads, crane paths and turbine pads
- 69 spread-footer wind turbine foundations, four design types
- 34.5 kV collector system
- 15.3 mile 161kV transmission system
- 161kV/34.5kV substation with a 99/132/165 MVA main power transformer
- Operations & Maintenance Building

The Balance of Plant (“BOP”) Contractor for the Project is M.A. Mortenson Company (“Mortenson”) of Minneapolis, MN. Mortenson is responsible for the entire scope of the balance of plant including site/civil, collection system, transmission line, met tower, turbine foundations, turbine erection, operations and maintenance building and the project substation excluding the purchase of the main power transformer. Mortenson is responsible for transformer offloading, installation, dress out, testing and commissioning at the Project site. Under the Turbine Supply Agreement (“TSA”) with Vestas-American Wind Technologies, Inc. (“Vestas”) the wind turbines began arriving to the Project Site in September 2020, off-load, erection and mechanical completion is by Mortenson. Vestas assumes responsibility for the units at mechanical completion and will then commission the units and turn them over to the owner.


Solas Energy Consulting US, Inc. (“Solas”) is performing the Project on-site construction management as the owner’s representative.

SUMMARY

Safety:

The Kings Point Wind Project is up to 371,729 total manhours worked. There were 231 personnel onsite as of January 31, 2021. During the month of January, under the BOP contract, there was no first aid incidents, two near misses, one recordable, zero lost time, one off-site non-project related incident, one quality incident, and two property damage incidents. Under the TSA, there were no first aids, no near misses, no recordables, zero lost time, and no property damages.

The first BOP near miss incident was when two turbine blades made contact at T-124. While beginning to lift the second blade of the tower, it began slowly approaching the last blade sitting on the stand causing slight contact between the blade on the ground and the counterweight of the blade gripper. The blade was inspected by Vestas and no damage was found. The second near miss was when a Mid Central truck with a



flatbed trailer with a loaded excavator veered too far off the road and had to get pulled out due to muddy conditions.

The BOP recordable incident was at T-8 when a team member was cleaning out the chute of the grout mixer while the paddles were in motion, causing a laceration with minor fracture to the fingertip. The team member required medical attention and stitches. Mortenson revised Work Instructions for this task to include additional signage to verify that the mixer is unplugged, and the generator is off prior to cleaning to hopefully avoid this from happening again.

The first BOP property damage was when a team member was driving around a turbine component at T-8 when his pickup truck began losing traction and slid to the side, causing contact with crane mats sitting next to the road. The second property damage was when a BOP truck pulling a trailer came too close and struck the passenger rear taillight of a parked TSA truck.

The off-site non project related incident was when a BOP employee was driving to work in a personal car and slid into a ditch due to the slick driving conditions and ice buildup. There were two team members in the car. The passenger complained of back pain so was taken to the hospital and was released a couple of hours later and returned to work the following day.

There was one BOP quality issue during the month of January. During the tensioning process at T-11 the anchor bolt broke off above the nut. Anchor Bolt was successfully removed and replaced.

Environmental:


There were two BOP and one TSA environmental incidents in January. The first BOP environmental incident was a spill of biodegradable windshield washer fluid and water mix in the laydown yard. The second BOP incident was a minor spill of hydraulic fluid caused by a loose fitting on the MCL 650, the hydraulic fluid contacted the crane pad and absorbent pads were used for containment. The TSA incident was when a rented generator leaked oil at T-35, absorbent pads were used along with a bag for containment.

Project Progress

Major work completed this period:

- Continued construction of the O&M building and additional storage building.
- Completed erection of base and lower mid sections.
- Energized 3 of 6 collection system circuits.
- Continued top out erection of 51 towers.
- Tower wiring has completed in 47 turbines.
- Number of turbines mechanically complete – 41
- Began site reclamation activities.
- Commissioning on completed towers - 14 towers have been commissioned

Major work planned for next period:

- Continue top out erection of towers.
 - Continue commissioning on completed towers.
 - Complete construction of the O&M building and additional storage building.
 - Energize 6 of 6 collection system circuits.
- 

Section 2
Construction Budget Status/Variations - (JV)

Kings Point Wind Project Construction Budget Status (From Base Model) *HC*Highly Confidential in its Entirety*HC*

[REDACTED]	[REDACTED]	[REDACTED]	[REDACTED]
[REDACTED]	[REDACTED]	[REDACTED]	[REDACTED]
[REDACTED]	[REDACTED]	[REDACTED]	[REDACTED]
[REDACTED]	[REDACTED]	[REDACTED]	[REDACTED]
[REDACTED]	[REDACTED]	[REDACTED]	[REDACTED]
[REDACTED]	[REDACTED]	[REDACTED]	[REDACTED]
[REDACTED]	[REDACTED]	[REDACTED]	[REDACTED]
[REDACTED]	[REDACTED]	[REDACTED]	[REDACTED]
[REDACTED]	[REDACTED]	[REDACTED]	[REDACTED]
[REDACTED]	[REDACTED]	[REDACTED]	[REDACTED]
[REDACTED]	[REDACTED]	[REDACTED]	[REDACTED]
[REDACTED]	[REDACTED]	[REDACTED]	[REDACTED]
[REDACTED]	[REDACTED]	[REDACTED]	[REDACTED]
[REDACTED]	[REDACTED]	[REDACTED]	[REDACTED]

Budget Comments:

There were two BOP Change Order approved during the month of January. Change Order #5 was for offload delay costs and Change Order 6 was for additional guyed anchors, O&M Building and Storage Building Allowance Reconciliations, FAA lighting wiring change and Wind/Weather Days through December 13th.

There was one TSA Change Order approved during the month of January. Change Order #2 was a zero dollar change and documented a hub serial number swap between Kings Point and the Neosho Ridge wind project due to component being delivered to the incorrect project site.

Draw 13 was funded on January 29th. Draw 14 is being submitted February 19th and is anticipated to fund February 26th.

Change Orders:

BOP Contractor - Mortenson

Change Orders approved during the month: \$ ** [REDACTED] **

Change Orders approved from financing to date: \$ ** [REDACTED] ** (CO#1, CO#2, CO#3, CO#4, CO#5 & CO#6)

Turbine Supplier - Vestas

Change Orders approved during the month: \$ 0

Change Orders approved from financing to date: \$ ** [REDACTED] ** (CO#1 & CO#2)



Section 3

Schedule Variations/Milestone Schedule Update

Schedule	Milestone Date	Actual Date	Notes
Turbine Supplier - FNTF	October 15, 2019	October 15, 2019	
EPC – FNTF	January 30, 2020	January 30, 2020	
Owner - Interconnect Back Feed Provided to EPC Scope	February 3, 2020	February 10, 2020	
EPC - Mobilization	February 10, 2020	February 10, 2020	
Turbine Supplier - Mobilization	April 27, 2020	May 11, 2020	
Turbine Supplier – Earliest delivery of Components/Containers/Tooling	April 27, 2020	July 16, 2020	
Owner - MPT Delivery	May 25, 2020	May 26, 2020	
Turbine Supplier - Guaranteed Delivery of Group 1 - (8) V110	May 30, 2020	September 28, 2020	
Turbine Supplier - Guaranteed Delivery of Group 2 - (4) V110 & (6) V120	June 6, 2020	September 30, 2020	
Turbine Supplier - Guaranteed Delivery of Group 3 - (10) V120	June 13, 2020	October 7, 2020	
Turbine Supplier - Guaranteed Delivery of Group 4 - (10) V120	June 20, 2020	October 12, 2020	
EPC - Guaranteed First Collection Circuit Completion – Circuit 11B	June 25, 2020	June 25, 2020	<i>EPC Guarantee Dates are reflective of CO3</i>
EPC - Guaranteed Second Collection Circuit Completion – Circuit 12B	July 18, 2020	July 18, 2020	
Turbine Supplier - Guaranteed Delivery of Group 5 - (10) V120	June 27, 2020	November 4, 2020	
EPC - Guaranteed Third Collection Circuit Completion – Circuit 12A	July 18, 2020	July 18, 2020	
EPC - Guaranteed Fourth Collection Circuit Completion – Circuit 13A	August 4, 2020	August 4, 2020	
Turbine Supplier - Guaranteed Delivery of Group 6 - (8) V120	July 4, 2020	November 7, 2020	
Turbine Supplier - Guaranteed Delivery of Group 7 - (10) V120	July 11, 2020	November 17, 2020	
Turbine Supplier - Mechanical Completion Group 1 - (6) WTG's	July 11, 2020	November 18, 2020	<i>T-65, T-51, T-62, T-67, T-58, T-53</i>
Owner – Guaranteed network connection (T1) (Turbine Supplier)	July 13, 2020	December 10, 2020	
Owner – Guaranteed back feed power date (Turbine Supplier)	July 13, 2020	November 18, 2020	<i>T-line energized Nov. 17th/Substation energized Nov. 18th</i>
EPC - Guaranteed Fifth Collection Circuit Completion – Circuit 13B	August 13, 2020	August 14, 2020	
Turbine Supplier - Guaranteed Delivery of Group 8 - (3) V120	July 18, 2020	November 30, 2020	
Turbine Supplier - Mechanical Completion Group 2 - (6) WTG's	July 18, 2020	December 5, 2020	<i>T-36, T-56, T-47, T-34, T-30, T-44</i>

Turbine Supplier – Commissioning Completion Group 1 - (6) WTG's	July 18, 2020	January 24, 2021	<i>T-58, T-25, T-47, T-44, T-32, T-35</i>
EPC - Guaranteed Sixth Collection Circuit Completion – Circuit 11A	August 24, 2020	August 21, 2020	
Turbine Supplier - Mechanical Completion Group 3 - (6) WTG's	July 25, 2020	December 12, 2020	<i>T-55, T-26, T-29, T-39, T-25, T-50</i>
Turbine Supplier – Commissioning Completion Group 2 - (6) WTG's	July 25, 2020	February 1, 2021	<i>T-53, T-39, T-31, T-51, T-52, T-50</i>
Turbine Supplier - Mechanical Completion Group 4 - (6) WTG's	August 1, 2020	December 19, 2020	<i>T-133, T-32, T-28, T-46, T-31, T-33</i>
Turbine Supplier – Commissioning Completion Group 3 - (6) WTG's	August 1, 2020	February 6, 2021	<i>T-33, T-34, T-65, T-106, T-114, T-53</i>
Turbine Supplier - Mechanical Completion Group 5 - (6) WTG's	August 8, 2020	February 3, 2021	<i>T-119, T-106, T-126, T-52, T-35, T-73</i>
Turbine Supplier – Commissioning Completion Group 4 - (6) WTG's	August 8, 2020		<i>T-55</i>
Turbine Supplier - Mechanical Completion Group 6 - (6) WTG's	August 15, 2020		<i>T-71, T-94, T-96</i>
Turbine Supplier – Commissioning Completion Group 5 - (6) WTG's	August 15, 2020		
Turbine Supplier - Mechanical Completion Group 7 - (6) WTG's	August 22, 2020		
Turbine Supplier – Commissioning Completion Group 6 - (6) WTG's	August 22, 2020		
EPC - Guaranteed First Mechanical Completion Group	November 30, 2020	November 7, 2020	<i>T-62, T-51, T-67, T-65, T-31, T-58</i>
Turbine Supplier - Mechanical Completion Group 8 - (6) WTG's	August 29, 2020		
Turbine Supplier – Commissioning Completion Group 7 - (6) WTG's	August 29, 2020		
EPC - Guaranteed Second Mechanical Completion Group	December 3, 2020	November 21, 2020	<i>T-53, T-56, T-47, T-34, T-30, T-55</i>
EPC – Guaranteed Third Mechanical Completion Group	December 7, 2020	December 3, 2020	<i>T-44, T-29, T-50 T-26, T-39, T-25</i>
Turbine Supplier - Mechanical Completion Group 9 - (6) WTG's	September 5, 2020		
Turbine Supplier – Commissioning Completion Group 8 - (6) WTG's	September 5, 2020		
EPC - Guaranteed Fourth Mechanical Completion Group	January 5, 2021	December 16, 2020	<i>T-33, T-46, T-124, T-32, T-28, T-133,</i>
Turbine Supplier - Mechanical Completion Group 10 - (6) WTG's	September 12, 2020		
Turbine Supplier – Commissioning Completion Group 9 - (6) WTG's	September 12, 2020		
EPC - SCADA Room Completion	October 12, 2020	February 3, 2021	
EPC - Guaranteed Fifth Mechanical Completion Group	January 9, 2021	January 4, 2021	<i>T-31, T-126, T-52, T-35, T-128, T-129</i>
Turbine Supplier - Mechanical Completion Group 11 - (6) WTG's	September 19, 2020		
Turbine Supplier – Commissioning Completion Group 10 - (6) WTG's	September 19, 2020		

EPC - Guaranteed Sixth Mechanical Completion Group	January 15, 2021	January 14, 2021	<i>T-114, T-106, T-120, T-134, T-119, T-113</i>
Turbine Supplier - Mechanical Completion Group 12 - (3) WTG's	September 26, 2020		
Turbine Supplier – Commissioning Completion Group 11 - (6) WTG's	September 26, 2020		
EPC - Guaranteed Seventh Mechanical Completion Group	January 23, 2021	January 30, 2021	<i>T-105, T-100, T-80, T-118, T-94, T-73</i>
Turbine Supplier – Commissioning Completion Group 12 - (3) WTG's	October 3, 2020		
EPC - Interconnection Facility Completion	December 4, 2021	November 20, 2021	
EPC - Guaranteed Eighth Mechanical Completion Group	January 26, 2021		<i>T-96, T-71, T-99, T-68, T-85</i>
EPC - Guaranteed Ninth Mechanical Completion Group	February 5, 2021		
Turbine Supplier – SCADA Commissioning Complete	October 26, 2020		
Turbine Supplier – Punchlist Complete / Final Completion	October 26, 2020		
EPC - Guaranteed Tenth Mechanical Completion Group	February 18, 2021		
EPC - Guaranteed Eleventh Mechanical Completion Group	February 25, 2021		
EPC - Guaranteed Twelfth Mechanical Completion Group	March 11, 2021		
EPC – Substantial Completion	March 27, 2021		<i>Anticipated COD</i>
Owner - Commercial Operation Date	July 1, 2021		<i>Start of Hedge Term</i>
EPC – Final Completion	"Upon satisfaction of all of the requirements set forth in Section 7.1 of the BOP Contract"		



Section 4

Transmission/Interconnect Update

The point of interconnect is Transmission Owner's Sub 382 161kV bus at the LaRussell Energy Center in Jasper County, MO.

As built documentation commenced in April. There is one heater that must be replaced in the PT Junction box and some labels that need to be modified, substation crew will replace the heater and put stickers on when they do their next scheduled substation check.

Accounting reconciliation is in process; we anticipate that Empire District Electric will issue a settlement invoice as a credit to the Project Company.

Firmware software upgrade to happen per requirement anticipated to be in full GIA, scope anticipated to be completed early 2021.



Section 5

Delivery Status of Equipment

WTG main component deliveries to site completed during week 51. The one M2 which was returned to the factory for repair returned to site during week 4.



Section 6
Job Progress Photos



Surge Arresters



Substation & Erosion Control Blankets



T-80 Turbine



T-133



Erected Turbines

Attachment 1
Contractor Monthly Report

See attached





Wind Energy Group



Kings Point Wind Project Monthly Progress Report

January 2021

Meeting Date: February 11, 2021



Revision V1.1

2/10/2021



CONTENTS

- Project Description 2
- Executive Summary 2
- Safety 3
- Points of emphasis 3
- Completed Trainings 3
- Project Man Hours & Safety Statistics 5
- Environmental 6
- Schedule and Update Reports 8
- Quality 10
 - RFI's 10
 - Submittals 10
- Engineering & Design Coordination 10
- Construction Issues 10
- Owner Goals 13

EXHIBITS

- Exhibit A – ASTA Schedule Overview
- Exhibit B – ASTA 3 Week Look Ahead Schedule
- Exhibit C – Progress Map
- Exhibit D – Open RFI Log
- Exhibit E – Open Submittal Log
- Exhibit F – Cost Issue Log
- Exhibit G – Permit Matrix
- Exhibit H – Safety Reports
- Exhibit I – Environmental Reports
- Exhibit J – Owner Goals



PROJECT DESCRIPTION

The Kings Point Project is a nominal 149.4 megawatt wind energy project using a quantity of 57 Vestas V120-2.2 Mk11D Wind Turbines (122m hub height) and 12 Vestas V110-2.0 Mk10C Wind Turbines (120m hub height) located in Jasper, Barton, Dade and Lawrence Counties in the state of Missouri. The project consists of constructing, installing, and commissioning 69 Vestas wind turbines, 33 miles of roadways, installation of turbine foundations, collection system, a 161kV substation, 15 miles of transmission line and support facilities.

EXECUTIVE SUMMARY

The project was faced with a wide range of weather events in the month of January from ice, to snow, to wind and heavy rains. The project experienced 3.71" of rain, 3.5" of snow, and 16 wind/weather events. The team was still able to complete top out of 13 towers, 15 walkdowns, and submitted 14 MCCs. As turnover pushed forward the project successfully energized the second and third circuits, 12B and 11A respectively. Base-mid erection was completed at the beginning of the month, followed by the completion of grout and anchor bolt tensioning.

The Mortenson team had 0 first aid, 1 (medical only) recordable incident, 2 property damages, and 2 near misses in January.

Note, all quantities within Report are as of 1/31/2021 and inclusive of all 2020 work activities, unless otherwise specified.



SAFETY

POINTS OF EMPHASIS

Safety orientations continued for all Kings Point team members, subcontractors and customer representatives. Seven hundred eighty-four (784) team members have gone through First Hour safety orientation. Two hundred sixty-two (262) team members have gone through Second Hour orientations (82% of current team).

The site is continuing to encounter cold, icy conditions in the mornings, and often muddy wet conditions in the afternoons. This in addition to heavy rain fall events has driven a continued focus on monitoring change of conditions and analyzing the specific work areas each day before proceeding with work.

As the project is progressing closer to completion, the team has elected to hold safety reset meetings with all crews. The meetings are being held to rerun through task specific IWPs, bring up site safety concerns that the crews are encountering, and discuss all opportunities for improvement or mitigation. The team has come a long way with a strong safety culture and strives to reach completion without further injuries.

The team continues to stress the importance of diligent COVID practices both on and off the job site. The Mortenson team currently has 1 team members in quarantine, 0 positive cases (as of 2/4/21). Mortenson's trade partner Sentry has 4 team members in quarantine due to positive tests (as of 2/4/21).

COMPLETED TRAININGS

- 1st Hour Orientation
- 2nd Hour Orientation
- Top Driver
- Spotter Training
- Pre-Task Planning
- Hazard Communication
- Missouri State Flagger Certifications
- Trucker Orientation
- Crane Walk/Escort Policy
- Fall Protection
- Tower Rescue



FIRST AID INCIDENTS

- None

RECORDABLE INCIDENTS

- 1/21: While cleaning the grout mixer chute, team member's finger was caught in moving parts, resulting in a laceration and minor fracture to the fingertip. Team member was able to return to work the next day. (Medical Only)

PROPERTY DAMAGE

- 1/5: Team member lost control of pickup truck in muddy/slippery conditions. Pickup truck made contact with crane mats, resulting in minor damage to the truck's running board.
- 1/29: Team member pulling a trailer down an access road drove too close to a parked pickup truck. Part of the trailer contacted and broke the taillight of the parked pickup truck.

NEAR MISS

- 1/3: While in the process of lifting the second blade for T124, the counterweight of the blade gripper contacted the 3rd blade, which was still resting in its stands. Vestas representative confirmed no damage was caused to the blade.
- 1/25: Subcontractor hauling an excavator was turning from an access road onto a county road and the driver's side tires of the truck became stuck in the shoulder of the county road. The truck was recovered without property damage or injury.

UNPLANNED DISRUPTION

- None

NON-WORK RELATED

- 1/16: MVA occurred involving Mortenson team members on the way into work. The vehicle lost control on a patch of ice and veered into the ditch.



Project Man Hours & Safety Statistics

TABLE 1: SAFETY STATISTICS – JANUARY – 2021

DART: 0.00
RIR: 1.12
Haz Recs: 700
Near Misses: 16
Days w/o Recordable Injury: 10
Hours Worked: 358,013

*RIR – A recordable incident is a work-related illness and any injury, which results in: loss of consciousness, restriction of work or motion, transfer to another job, or requires medical treatment beyond first aid.

**DART – The days away, restricted, or transfer case incident rate (DART) is the number of Lost Time and Restricted cases.

TABLE 2: MAN HOURS AS OF 1/31/21

CONTRACTOR	Feb-20	Mar-20	Apr-20	May-20	Jun-20	Jul-20	Aug-20	Sep-20	Oct-20	Nov-20	Dec-20	Jan-21	TOTAL
Mortenson - BOP	1,317	2,917	4,475	1,968	2,656	2,795	3,247	8,876	19,195	22,318	25,632	19,419	114,815
Mortenson - Power	437	590	773	701	6,552	2,724	5,295	4,243	1,276	1,781	1,416	307	26,095
Mortenson - Civil	2,821	7,005	9,294	9,394	10,990	6,354	3,255	3,255	2,338	2,109	3,153	2,471	62,439
KDF	552	1,000	384	0	0	0	0	0	0	0	0	0	1,936
MidCentral	530	2,658	2,197	933	3,753	3,864	1,773	1,545	645	996	468	688	20,050
MidCentral (Civil)	0	0	0	568	1,997	1,833	770	554	240	40	0	0	6,002
Rock Solid	216	339	1,450	360	0	0	0	0	0	0	0	0	2,365
Jim River Fencing	216	258	96	231	0	55	0	0	0	0	0	0	856
Solas	315	791	708	849	918	984	1,223	1,187	1,275	1,197	1,120	1,088	11,655
Stantec	456	1,545	616	349	268	253	180	120	31	8	8	0	3,834
HV Occupational	0	171	287	252	268	273	265	245	294	291	370	268	2,984
Chambers Security	0	198	371	380	372	390	387	362	370	375	375	381	3,961
Team Services	0	400	616	664	880	960	240	250	250	250	250	250	5,010
Titan	0	0	0	0	509	899	594	684	272	317	141	0	3,416
Rumler Rebar	0	273	2,219	2,116	2,284	885	0	0	0	0	0	0	7,777
Ozark Ready Mix	0	853	2,967	3,854	3,225	1,466	0	0	0	0	0	0	12,365
SubSurface	0	0	0	406	198	0	0	0	0	0	0	0	604
Spider Plow	0	0	0	1,542	3,895	2,480	2,376	345	0	0	0	0	10,638
Ellingson	0	0	0	2,689	2,515	5,134	63	0	0	0	0	0	10,401
Barrett	0	241	341	505	633	206	0	0	0	0	0	0	1,926
Terracon (SWPPP)	0	22	22	22	22	22	17	22	22	22	22	0	215
APAC	0	0	983	1,620	1,707	772	880	178	0	53	0	0	6,193
Capital Trucking	1,151	1,363	1,730	1,622	1,674	383	235	59	162	117	176	148	8,820
Spencer Blasting	0	0	20	232	426	0	0	0	0	0	0	0	678
Kuesel Stabilization	0	0	0	127	248	152	226	0	0	125	0	0	878
Capital Electric	0	0	0	0	2,762	2,159	3,412	4,384	274	1,654	0	0	14,645
True Grit	0	0	0	0	0	0	0	72	176	150	178	200	776
Northern Contractors	0	0	0	0	0	0	0	443	0	0	0	0	443
RESA	0	0	0	0	0	0	0	0	165	110	78	0	353
Vikor	0	0	0	0	0	0	0	0	530	0	0	0	530
ASB Energy	0	0	0	5,599	4,671	3,046	2,039	0	0	0	0	0	15,355
PROJECT TOTAL	8,011	20,624	29,549	36,983	53,422	38,089	26,477	26,824	27,515	31,913	33,387	25,220	358,013



TABLE 3: HAZARD RECOGNITION STATISTICS AS OF 1/31/21

Haz Rec/Near Miss Cards													
	Feb-20	Mar-20	Apr-20	May-20	Jun-20	Jul-20	Aug-20	Sep-20	Oct-20	Nov-20	Dec-20	Jan-21	Total
Ladders	0	0	0	0	0	0	0	1	0	0	3	5	9
Electrical	0	0	0	0	2	3	0	2	0	1	2	3	13
Vehicles	7	12	19	17	13	9	9	5	5	12	10	10	128
Unsafe Act	0	3	7	8	8	7	12	15	2	8	8	7	85
Struck By/Against	0	0	0	5	8	0	0	0	0	1	4	0	18
PPE	0	10	8	7	4	1	7	6	3	3	14	8	71
Walking/Working Surfaces	3	4	5	3	2	0	3	2	3	3	2	2	32
Fall Protection	0	1	0	0	0	0	2	1	3	1	2	4	14
Suspended Loads	0	1	0	0	0	0	0	1	0	1	3	1	7
Roads	0	0	0	0	7	4	2	0	3	0	1	3	20
Barricades, Guards, Danger Tape	2	6	13	9	7	6	4	4	11	6	4	2	74
Equipment	0	0	0	0	9	4	17	14	5	13	19	2	83
Housekeeping	0	1	10	5	7	7	9	9	2	2	5	5	62
Rigging	0	0	0	0	0	0	0	0	0	2	6	2	10
Wildlife	0	2	1	1	4	3	0	1	0	1	2	0	15
General	0	0	0	0	0	5	10	4	9	3	2	3	36
Environmental	0	0	1	2	3	3	0	2	0	0	1	2	14
Signage	0	0	0	0	0	3	3	0	2	0	1	0	9
TOTALS	12	40	64	57	74	55	78	67	48	57	89	59	700

Environmental

STORMWATER POLLUTION PREVENTION PLAN (SWPPP) UPDATE

All onsite team members, including subcontractors, have been briefed on the policies and procedures of the SWPPP plan. The project team has continued installation of SWPPP BMPs, maintained the inspection schedule with a third party SWPPP inspector. The SWPPP binder is located in the Mortenson office trailer.

- NOI received on 02/07/2020
- Bi-Weekly SWPPP inspections continued and were performed by Mortenson on 1/5/2021, 1/13/2021, and 1/26/2021. All of the inspection report PDFs are on Procore in the submittals section.
- All SWPPP redlines will be kept on the ArcGIS platform managed by Mortenson. This acts as a living as-built document to keep the site in compliance with record keeping requirements. This includes all BMP install, removal, and alterations. It also tracks land disturbing activities.

SPILL PREVENTION, CONTROL, AND COUNTERMEASURE PLAN (SPCC) UPDATE

Mortenson received the finalized SPCC Plan from Westwood on 6/10/2020. The SPCC Plan is kept in the Mortenson construction trailers onsite. Monthly inspections of the fuel containment areas began April 9th. The spill log below provides details on the spills reported during January 2021.

SPILL LOG UPDATE

- 1/8: Mixture of water and biodegradable windshield washer fluid was spilled in the laydown yard.
- 1/20: MLC 650 leaked hydraulic fluid onto the crane pad at T90.



PERCIPITATION TOTAL

The project received 3.71” of rain and 3.5” of snow in January. Below are the daily accumulation totals recorded onsite.

Date	High (°F)	Low (°F)	Weather Description	Precipitation (in)	Crews Affected	Comments	Monthly Precip Totals (in)
				44.21			
Friday, January 1, 2021	33.0	31.0	2" Snow				0.00
Saturday, January 2, 2021	32.0	27.0	Ice		All	Icy Conditions	0.00
Sunday, January 3, 2021	51.0	26.0	Ice		All	Icy Conditions	0.00
Monday, January 4, 2021	51.0	26.0			Restoration	Saturated Conditions	0.00
Tuesday, January 5, 2021	56.0	25.0			Restoration	Saturated Conditions	0.00
Wednesday, January 6, 2021	45.0	36.0	Rain & Wind	0.96	All		0.96
Thursday, January 7, 2021	38.0	33.0	Rain & Wind	0.10	All	Saturated Conditions	1.06
Friday, January 8, 2021	39.0	28.0			Restoration	Saturated Conditions	1.06
Saturday, January 9, 2021	35.0	21.0			Restoration	Saturated Conditions	1.06
Sunday, January 10, 2021	33.0	19.0			Restoration	Saturated Conditions	1.06
Monday, January 11, 2021	41.0	21.0					1.06
Tuesday, January 12, 2021	50.0	29.0					1.06
Wednesday, January 13, 2021	55.0	32.0					1.06
Thursday, January 14, 2021	51.0	36.0					1.06
Friday, January 15, 2021	38.0	31.0					1.06
Saturday, January 16, 2021	42.0	27.0					1.06
Sunday, January 17, 2021	50.0	25.0					1.06
Monday, January 18, 2021	55.0	27.0					1.06
Tuesday, January 19, 2021	46.0	24.0					1.06
Wednesday, January 20, 2021	50.0	24.0					1.06
Thursday, January 21, 2021	51.0	37.0					1.06
Friday, January 22, 2021	45.0	28.0					1.06
Saturday, January 23, 2021	44.0	25.0		0.03			1.09
Sunday, January 24, 2021	48.0	38.0					1.09
Monday, January 25, 2021	51.0	41.0	Heavy Rain	1.90	All	Sites and roads flooded	2.99
Tuesday, January 26, 2021	41.0	30.0			All	Saturated Conditions	2.99
Wednesday, January 27, 2021	31.0	27.0	1.5" Snow		Restoration	Snow / saturated conditions	2.99
Thursday, January 28, 2021	43.0	27.0			Restoration	Saturated conditions	2.99
Friday, January 29, 2021	55.0	30.0			Crane Build	Saturated Conditions	2.99
Saturday, January 30, 2021	55.0	41.0		0.72			3.71
Sunday, January 31, 2021	40.0	33.0			All	Saturated Conditions	3.71

Wind/Weather Days as of 2/1/2021

Wind/Weather Days		
Crane/Crew	Total Days Claimed	Adjustments to MCC
Main Erection 1	44	28
Main Erection 2	33	17
Main Erection 3	43	27
Base/Mid 1	24	8
Offload	13	0
Blade Roll Crew	20	4



SCHEDULE AND UPDATE REPORTS

TABLE 4: CONSTRUCTION PROGRESS TOTALS

Activity	Project Total Value	Actual Progress As of 1/31/2021	Project Percent Complete
UG Collection	234,103 LF	234,103	100%
Underground Bore	78 EA	78	100%
Infrastructure Completion	6 EA	6	100%
Circuit Energization	6 EA	3	50%
Fiber Installation	243,103 LF	243,103	100%
Substation	1 EA	1	100%
T-Line Stringing	9 EA	9	100%
T-Line Structures	124 EA	124	100%
O&M Building	1 EA	.99	99%
O&M Storage Building	1 EA	.99	99%
Crane Pad Construction	69 EA	69	100%
Crane Pathways	142,068 LF	142,068	100%
Offload Tower Sections	69 EA	69*	100%
Offload Nacelle	69 EA	69	100%
Offload Hub	69 EA	69	100%
Offload Blades	69 EA	69	100%
Set Base/Mid	69 EA	69	100%
Install Hub	69 EA	69	100%
Grout Base Section	69 EA	69	100%
Prep Nacelle (Sentry)	69 EA	68	99%
Top-Out	69 EA	51	74%
Tower Wiring	69 EA	47	68%



MCC	69 EA	46	67%
Walkdowns	69 EA	45	65%
Met Tower	1 EA	.9	90%
Restoration	1 EA	.43	43%

PROJECT SCHEDULE

- See Exhibit A – ASTA Schedule
- See Exhibit B – ASTA 3 Week Look Ahead Schedule

MAJOR WORK ACTIVITIES

CIVIL ACTIVITIES

PERFORMED IN JANUARY	PLANNED FOR FEBRUARY
Public road repairs & maintenance	Public road repairs & maintenance
Site Restoration	Site Restoration

ELECTRICAL ACTIVITIES

PERFORMED IN JANUARY	PLANNED FOR FEBRUARY
Fiber Terminations	Fiber Terminations
Circuit Energizations	Circuit Energizations
Collection Restoration	Collection Restoration
	T-Line Restoration

ERECTION ACTIVITIES

PERFORMED IN JANUARY	PLANNED FOR FEBRUARY
Nacelle Prep (Turning Gears only)	Nacelle Prep (Turning Gears only)
Blade Roll / Prep	Blade Roll / Prep
Install Base-LM	Top Out
Grout	Tower Wiring
Anchor Bolt Tension	Service Lift Install
Top Out	Tower Clean
Tower Wiring	MCC
Service Lift Install	Walkdowns
Tower Clean	
MCC	
Walkdowns	



MISC ACTIVITIES

PERFORMED IN JANUARY

PLANNED FOR FEBRUARY

O&M Final Clean and Walkdown	O&M Turnover
	Met Tower Completion

QUALITY

RFI'S

- See Procore Open RFI Log, Exhibit D. Current as of 2/9/2021.

SUBMITTALS

- See Procore Open Submittal Log, Exhibit E. Current as of 2/9/2021.

ISSUES

- 1/21/21 – T11 Broken Anchor Bolt: one anchor bolt broke off during the tensioning process, the break occurred above the tower flange. The broken bolt was successfully removed, and a new bolt was inserted and tensioned. The flange was then 10% checked again.
- Surge Arrestor Replacement: 11A, 11B, 13B complete. 1 out of 2 towers complete on 13A. 13A and 12A will be completed in next 2 weeks. 12B will be completed during the de-energization process of 12A.

ENGINEERING & DESIGN COORDINATION

- Design Packages Status
 - Civil – IFC Rev2, Structural – IFC, Collection - IFC, Substation – IFC, T-Line – IFC, O&M Building & Storage Building – IFC, MET Tower - IFC

CONSTRUCTION ISSUES

- COVID Impacts – Temporary reduction in Sentry manpower / production.
- Ice Storm Event 1/1-1/4 – All damaged items on order, to be replaced by Vestas commissioning due to lead times. Additional ice event 2/7-current, no damaged reported yet.
- T10 M2 Replacement/repair from the roll over on October 23, 2020. Damaged tower section re-loaded 12/4, left site 12/7, replaced on 12/8. Repaired tower section delivered 1/29.
- Landowner Concerns – David Carrier.
- Vestas – T72 chain hoist, T75 & T91 service lifts.

PHOTOS

PHOTO 1: O&M BUMP OUT



PHOTO 2: O&M BUMP OUT



PHOTO 3: 1/25 ROAD FLOODING



PHOTO 4: T72 BLADE ERECTION



Exhibit A – ASTA Schedule Overview

Line	Name	Duration	Start Baseline	Finish Baseline	Start	Finish	Milestone Date	Total float	Finish variance	Overall percent complete	2021											
											January 25	1	8	15	22	1	8	15	22	29	5	12
1	Mobilization	120d	2/10/2020 8:00 AM	2/21/2020 5:00 PM	02/10/20 A	07/08/20 A			-22w	100.00												
2	Public Roads	113d	2/19/2020 4:37:26 PM	5/13/2020 4:29:14 PM	02/17/20 A	07/06/20 A			-8w 2.06d	100.00												
3	Access Roads	98d	2/3/2020 8:00 AM	4/28/2020 9:00 AM	02/18/20 A	06/17/20 A			-8w 1.88d	100.00												
4	Foundations	105d 1h	3/2/2020 8:00 AM	5/29/2020 9:00 AM	03/10/20 A	07/16/20 A			-8w 7h	100.00												
5	Collection System	124d 3h	3/24/2020 8:00 AM	8/11/2020 5:00 PM	04/15/20 A	09/23/20 A			-5w 4.38d	100.00												
6	Substation	365d 5h	3/26/2020 9:09:17 AM	10/8/2020 8:00 AM	07/08/19 A	11/18/20 A			-5w 4d	100.00												
7	Transmission Line	210d	2/11/2020 8:00 AM	10/7/2020 5:00 PM	02/18/20 A	11/17/20 A			-5w 4d	100.00												
8	WTG Deliveries	99d 4h	5/26/2020 8:00 AM	7/13/2020 12:00 PM	08/03/20 A	12/18/20 A			-22w 4d	100.00												
9	Base Mid Erection	90d 5h	6/11/2020 8:00 AM	10/13/2020 1:06 PM	09/24/20 A	01/28/21		15d	-15w 1.11d	98.91												
10	Main Erection	112d 1h	7/8/2020 8:00 AM	10/23/2020 9:18 AM	09/30/20 A	03/04/21		6d 4h	-18w 3.96d	77.27												
11	Tower Wiring	110d 1h	7/10/2020 10:00 AM	10/27/2020 2:18 PM	10/06/20 A	03/09/21		6d 4h	-18w 4.46d	68.18												
12	Tower Complete	97d 1h	7/22/2020 10:00 AM	10/30/2020 2:18 PM	10/28/20 A	03/15/21		6d	-18w 4.46d	59.09												
13	O & M Building	1150d 1h	11/25/2019 8:00 AM	5/20/2020 5:00 PM	08/18/16 A	02/05/21		43d	-38w 2.13d	97.34												
14	MET Tower	101d 1h	7/6/2020 8:00 AM	8/3/2020 5:00 PM	10/05/20 A	02/23/21		31d	-29w 1.13d	83.05												
15	Project Start-Up Milestones	110d	8/30/2019 8:00 AM	2/6/2020 8:00 AM	08/30/19 A	02/06/20 A			-1d	100.00												
16	Final Notice to Proceed		2/3/2020 8:00 AM *	2/3/2020 8:00 AM	02/03/20 A	02/03/20 A				100.00												
17	Contract Executed		8/30/2019 8:00 AM *	8/30/2019 8:00 AM	08/30/19 A	08/30/19 A				100.00												
18	404 Permit Execution				02/06/20 A	02/06/20 A				100.00												
19	Contractual Milestones	314d 1h	2/3/2020 8:00 AM	11/18/2020 8:12 AM	01/30/20 A	03/26/21		8d	-18w 2.1d	85.47												
20	WTG Deliveries	129d 1h	5/26/2020 8:00 AM	7/10/2020 8:00 AM	08/03/20 A	01/29/21			-29w 1.13d	50.00												
21	WTG Delivery Start		5/26/2020 8:00 AM *	5/26/2020 8:00 AM	08/03/20 A	08/03/20 A			-9w 3d	100.00												
22	WTG Delivery Finish		7/10/2020 8:00 AM	7/10/2020 8:00 AM	01/29/21	01/29/21 *	1/29/2021 8:00 AM		-28w													
23	Infrastructure Facilities Completion	43d	6/4/2020 9:46:31 AM	8/3/2020 5:00 PM	06/25/20 A	08/21/20 A			-15d	100.00												
24	Feeder 11B		6/4/2020 9:46:31 AM	6/4/2020 9:46:31 AM *	06/25/20 A	06/25/20 A	6/25/2020 0:00 AM		-15d 6.22h	100.00												
25	Feeder 12B		6/5/2020 10:51:23 AM	6/5/2020 10:51:23 AM *	07/18/20 A	07/18/20 A	7/18/2020 5:00 PM		-4w 5.64d	100.00												
26	Feeder 12A		6/9/2020 10:18:37 AM	6/9/2020 10:18:37 AM *	07/18/20 A	07/18/20 A	7/18/2020 5:00 PM		-4w 3.71d	100.00												
27	Feeder 13A		6/12/2020 2:56:15 PM	6/12/2020 2:56:15 PM *	08/04/20 A	08/04/20 A	8/4/2020 5:00 PM		-7w 1.26d	100.00												
28	Feeder 13B		6/25/2020 3:01:49 PM	6/25/2020 3:01:49 PM *	08/14/20 A	08/14/20 A	8/13/2020 5:00 PM		-7w 1.97h	100.00												
29	Feeder 11A		8/3/2020 5:00 PM	8/3/2020 5:00 PM *	08/21/20 A	08/21/20 A	8/24/2020 5:00 PM		-14d	100.00												

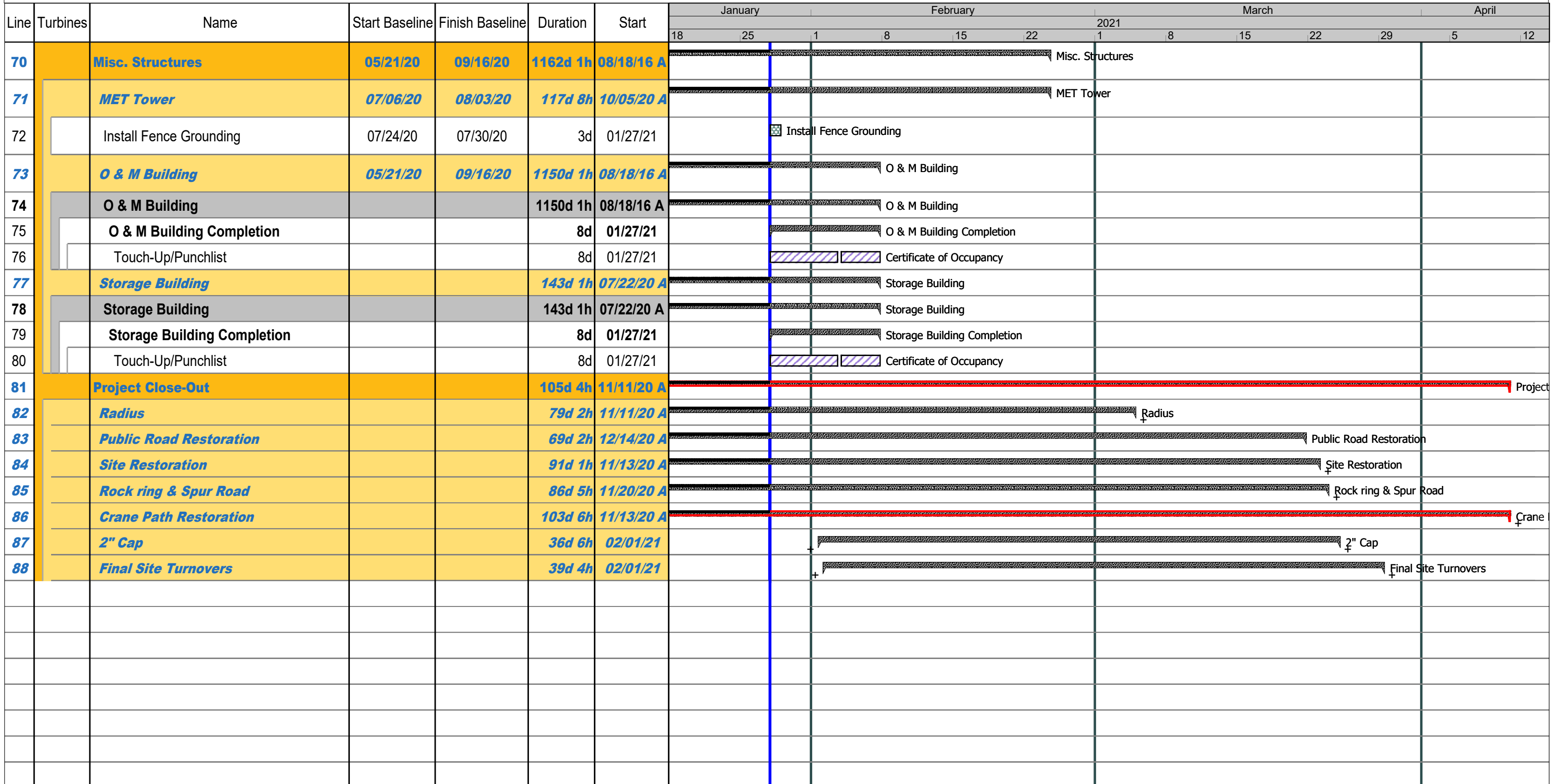
Line	Name	Duration	Start Baseline	Finish Baseline	Start	Finish	Milestone Date	Total float	Finish variance	Overall percent complete	2021												
											January 25	1	8	15	22	1	8	15	22	29	5	12	
30	Electrical Completion	238d	2/3/2020 8:00 AM	10/8/2020 8:00 AM	01/30/20 A	12/10/20 A			-9w	100.00													
31	Backfeed Power Available by Empire		2/3/2020 8:00 AM	2/3/2020 8:00 AM	01/30/20 A	01/30/20 A			1d	100.00													
32	SCADA Room Completion		9/16/2020 5:00 PM	9/16/2020 5:00 PM *	12/10/20 A	12/10/20 A	10/12/2020 5:00 PM		-11w 4d	100.00													
33	Transmission Line Construction Completion		10/7/2020 5:00 PM	10/7/2020 5:00 PM *	11/17/20 A	11/17/20 A	12/4/2020 5:00 PM		-5w 3.5d	100.00													
34	BOP Substation Completion		10/8/2020 8:00 AM	10/8/2020 8:00 AM *	11/18/20 A	11/18/20 A	12/4/2020 0:00 AM		-6w	100.00													
35	EPC Milestone - Interconnect Facilities Completion - "Substation Energization"		10/8/2020 8:00 AM	10/8/2020 8:00 AM *	11/18/20 A	11/18/20 A	12/4/2020 0:00 AM		-5w 4d	100.00													
36	Mechanical Completion	89d 1h	8/3/2020 8:06 AM	10/30/2020 2:18 PM	11/07/20 A	03/15/21		6d	-18w 4.46d	50.00													
37	EPC Milestone - Turbine Mechanical Completion - Group 1		8/3/2020 8:06 AM	8/3/2020 8:06 AM *	11/07/20 A	11/07/20 A	11/30/2020 0:00 AM		-11w 2.99d	100.00													
38	EPC Milestone - Turbine Mechanical Completion - Group 2		8/7/2020 9:30 AM	8/7/2020 9:30 AM *	11/21/20 A	11/21/20 A	12/3/2020 0:00 AM		-12w 2.81d	100.00													
39	EPC Milestone - Turbine Mechanical Completion - Group 3		8/13/2020 9:30 AM	8/13/2020 9:30 AM *	12/02/20 A	12/02/20 A	12/7/2020 0:00 AM		-15w 1.81d	100.00													
40	EPC Milestone - Turbine Mechanical Completion - Group 4		8/19/2020 3:30 PM	8/19/2020 3:30 PM *	12/16/20 A	12/16/20 A	1/5/2021 0:00 AM		-16w 2.19d	100.00													
41	EPC Milestone - Turbine Mechanical Completion - Group 5		8/27/2020 2:12 PM	8/27/2020 2:12 PM *	01/06/21 A	01/06/21 A	1/9/2021 0:00 AM		-17w 4.35d	100.00													
42	EPC Milestone - Turbine Mechanical Completion - Group 6		9/2/2020 2:18 PM	9/2/2020 2:18 PM *	01/20/21 A	01/20/21 A	1/28/2021 0:00 AM		-19w 2.7h	100.00													
43	EPC Milestone - Turbine Mechanical Completion - Group 7		9/11/2020 11:36 AM	9/11/2020 11:36 AM *	01/28/21	01/28/21 *	2/4/2021 0:00 AM	5d	-18w 4.55d														
44	EPC Milestone - Turbine Mechanical Completion - Group 8		9/17/2020 10:54 AM	9/17/2020 10:54 AM *	02/04/21	02/04/21 *	2/6/2021 0:00 AM	2d	-19w 5.1h														
45	EPC Milestone - Turbine Mechanical Completion - Group 9		9/29/2020 3:00 PM	9/29/2020 3:00 PM *	02/15/21	02/15/21 *	2/17/2021 0:00 AM	2d	-18w 4.25d														
46	EPC Milestone - Turbine Mechanical Completion - Group 10		10/6/2020 11:06 AM	10/6/2020 11:06 AM *	03/01/21	03/01/21 *	3/2/2021 0:00 AM	1d	-19w 4.61d														
47	EPC Milestone - Turbine Mechanical Completion - Group 11		10/19/2020 8:00 AM	10/19/2020 8:00 AM *	03/02/21	03/02/21 *	3/9/2021 0:00 AM	5d	-18w 2d														
48	EPC Milestone - Turbine Mechanical Completion - Group 12		10/30/2020 2:18 PM	10/30/2020 2:18 PM *	03/15/21	03/15/21 *	3/23/2021 0:00 AM	6d	-18w 1.34d														
49	Final Completion Milestones		11/18/2020 8:12 AM	11/18/2020 8:12 AM	03/26/21	03/26/21			-4w 2.7d														
50	EPC Milestone - BOP Substantial Completion		11/18/2020 8:12 AM	11/18/2020 8:12 AM *	03/26/21	03/26/21 *	4/8/2021 0:00 AM	10d 1h	-14w 1.18d														

Exhibit B – ASTA – 3 Week Look Ahead Schedule

Line	Turbines	Name	Start Baseline	Finish Baseline	Duration	Start	January		February		March			April		
							18	25	1	8	15	22	1	8	15	22
1		WTG Deliveries / OffLoad	05/26/20	07/13/20	127d 2h	08/03/20 A	WTG Deliveries / OffLoad									
2		9-21-20 Deliveries Base, Mids, Top			91d 2h	09/22/20 A	9-21-20 Deliveries Base, Mids, Top									
3	10	Turbine 10 OffLoad Base Mids Top			3h 20min	01/27/21	10 OffLoad Mid 2									
4		Turbine Off-Load & Prep	04/02/20	07/23/20	125d 1h	08/11/20 A	Turbine Off-Load & Prep									
5		Nacelle Prep	05/26/20	07/23/20	125d 1h	08/11/20 A	Nacelle Prep									
6	22	Turbine 22 Nacelle Prep	06/18/20	06/22/20	2d	01/27/21	22 Install Turning Gear									
7	19	Turbine 19 Nacelle Prep	06/19/20	06/23/20	2d	01/27/21	19 Install Turning Gear									
8	18	Turbine 18 Nacelle Prep	06/19/20	06/23/20	2d	01/27/21	18 Install Turning Gear									
9	17	Turbine 17 Nacelle Prep	06/22/20	06/24/20	2d	01/28/21	17 Install Turning Gear									
10	16	Turbine 16 Nacelle Prep	06/22/20	06/24/20	2d	01/28/21	16 Install Turning Gear									
11	14	Turbine 14 Nacelle Prep	06/23/20	06/25/20	2d	01/29/21	14 Install Turning Gear									
12	11	Turbine 11 Nacelle Prep	06/23/20	06/25/20	2d	01/29/21	11 Install Turning Gear									
13	10	Turbine 10 Nacelle Prep	06/24/20	06/26/20	2d	02/01/21	10 Install Turning Gear									
14	9	Turbine 9 Nacelle Prep	06/24/20	06/26/20	2d	02/01/21	9 Install Turning Gear									
15	8	Turbine 8 Nacelle Prep	06/25/20	06/29/20	1d 8h	02/02/21	8 Install Turning Gear									
16	59	Turbine 59 Nacelle Prep	07/16/20	07/20/20	2d	01/27/21	59 Install Turning Gear									
17	60	Turbine 60 Nacelle Prep	07/17/20	07/21/20	2d	01/27/21	60 Install Turning Gear									
18	63	Turbine 63 Nacelle Prep	07/17/20	07/21/20	1d 8h	01/28/21	63 Install Turning Gear									
19		Turbine Erection and Wiring	06/10/20	10/30/20	160d 1h	08/03/20 A	Turbine Erection and Wiring									
20		Base Mid 1	06/10/20	09/14/20	128d 5h	08/03/20 A	Base Mid 1									
21		Set Base M1			89d 5h	09/25/20 A	Set Base M1									
22	11	Turbine 11 Set Base M1			1d 2h	01/27/21	11 Tension Base									
23	10	Turbine 10 Set Base M1			1d 3h	01/27/21	10 Tension Base									

Line	Turbines	Name	Start Baseline	Finish Baseline	Duration	Start	January				February				March				April	
							2021		2021		2021		2021		2021		2021			
							18	25	1	8	15	22	1	8	15	22	29	5	12	
24	9	Turbine 9 Set Base M1			1d 2h	01/28/21														
25		Main Erection # 1	07/08/20	10/13/20	115d 1h	09/19/20 A														
26	71	Turbine 71 Top-Out and Complete Turbines	07/21/20	08/05/20	6d 10h	01/27/21														
27	68	Turbine 68 Top-Out and Complete Turbines	07/24/20	08/07/20	10d	01/27/21														
28	72	Turbine 72 Top-Out and Complete Turbines	07/27/20	08/11/20	9d 8h	01/28/21														
29	74	Install Lift Assist	08/05/20	08/05/20	4h	01/27/21														
30	74	Wire Pull	08/03/20	08/03/20	6h	02/01/21														
31	74	Wire Terminations	08/04/20	08/04/20	6h	02/02/21														
32	74	Tower Cleaning	08/06/20	08/07/20	6h	02/04/21														
33	74	Mechanical Completion	08/10/20	08/10/20	6h	02/05/21														
34	74	Tower Walkdown	08/11/20	08/12/20	1d	02/09/21														
35	74	Tower Complete	08/12/20	08/12/20		02/10/21														
36	74,78	ME 1 Crane Partial Breakdown 74-78	07/31/20	07/31/20	4d 2h	01/25/21 A														
37	78	Turbine 78 Top-Out and Complete Turbines	07/31/20	08/13/20	6d 4h	01/30/21														
38	59,78	ME 1 Crane Full Breakdown 78-69			5d	02/01/21														
39	69	Turbine 69 Top-Out and Complete Turbines	09/25/20	10/06/20	5d 10h	02/06/21														
40	63,69	ME 1 Crane Walk 69-63	09/28/20	09/30/20	1d	02/08/21														
41	63	Turbine 63 Top-Out and Complete Turbines	09/23/20	10/02/20	6d 4h	02/09/21														
42	60,63	ME 1 Crane Partial Breakdown 63-60	09/25/20	09/25/20	3d	02/10/21														
43	60	Turbine 60 Top-Out and Complete Turbines	09/30/20	10/09/20	6d 4h	02/15/21														
44	59,60	ME 1 Crane Partial Breakdown 60-59	10/01/20	10/02/20	2d 2h	02/15/21														
45		Main Erection # 2	07/16/20	10/20/20	121d 5h	09/24/20 A														
46	96	Turbine 96 Top-Out and Complete Turbines	09/30/20	10/09/20	5d 10h	01/27/21														

Line	Turbines	Name	Start Baseline	Finish Baseline	Duration	Start	January		February				March				April		
							18	25	1	8	15	22	1	8	15	22	29	5	12
							2021												
47	90	Turbine 90 Top-Out and Complete Turbines	10/02/20	10/12/20	6d 3h	01/27/21			90		Tower Complete								
48	27,90	ME 2 Crane Full Breakdown 90- 27	07/30/20	08/04/20	9d	01/22/21 A		27,90		ME 2 Crane Full Breakdown 90- 27									
49	27	Turbine 27 Top-Out and Complete Turbines	08/26/20	09/04/20	6d 4h	01/31/21			27		Tower Complete								
50	22,27	ME 2 Crane Partial Breakdown 27-22	08/25/20	08/26/20	2d 6h	02/01/21			22,27		ME 2 Crane Partial Breakdown 27-22								
51	22	Turbine 22 Top-Out and Complete Turbines	08/24/20	09/02/20	6d 4h	02/04/21			22		Tower Complete								
52	20,22	ME 2 Crane Partial Breakdown 20-22	08/24/20	08/24/20	3d	02/05/21			20,22		ME 2 Crane Partial Breakdown 20-22								
53	20	Turbine 20 Top-Out and Complete Turbines	08/21/20	08/31/20	6d 4h	02/09/21			20		Mechanical Completion								
54	19,20	ME 2 Crane Partial Breakdown 20-19	08/27/20	09/01/20	3d	02/10/21			19,20		ME 2 Crane Partial Breakdown 20-19								
55	19	Turbine 19 Top-Out and Complete Turbines	09/01/20	09/11/20	6d 4h	02/13/21			19		Wire Pull								
56	18,19	ME 2 Crane Partial Breakdown 19-18	09/02/20	09/03/20	3d	02/15/21			18,19		ME 2 Crane Partial Breakdown 19-18								
57		Main Erection # 3	07/31/20	10/30/20	97d 1h	10/07/20 A					Main Erection # 3								
58	99	Turbine 99 Top-Out and Complete Turbines	09/21/20	09/29/20	5d 10h	01/27/21			99		Tower Complete								
59	85	Turbine 85 Top-Out and Complete Turbines	08/11/20	08/19/20	6d 4h	01/27/21			85		Tower Complete								
60	91	Turbine 91 Top-Out and Complete Turbines	08/13/20	08/21/20	5d 10h	01/27/21			91		Tower Complete								
61	91,98	ME3 Crane Partial Breakdown 91-98	09/21/20	09/22/20	3d	01/27/21			91,98		ME3 Crane Partial Breakdown 91-98								
62	98	Turbine 98 Top-Out and Complete Turbines	09/22/20	10/01/20	6d 4h	01/30/21			98		Tower Complete								
63	8,98	ME3 Crane Full Breakdown 98-8	09/25/20	09/25/20	4d 11h	02/01/21			8,98		ME3 Crane Full Breakdown 98-8								
64	8	Turbine 8 Top-Out and Complete Turbines	09/29/20	10/07/20	6d 4h	02/09/21			8		Mechanical Completion								
65	8,9	ME3 Crane Walk 8-9	09/28/20	09/29/20	1d	02/10/21			8,9		ME3 Crane Walk 8-9								
66	9	Turbine 9 Top-Out and Complete Turbines	09/25/20	10/06/20	6d 4h	02/11/21			9		Wire Terminations								
67	9,10	ME3 Crane Walk 9-10	09/16/20	09/23/20	1d	02/12/21			9,10		ME3 Crane Walk 9-10								
68	10	Turbine 10 Top-Out and Complete Turbines	09/23/20	10/02/20	6d 4h	02/13/21			10		Wire Pull								
69		Demob ME3			5d	02/15/21					Demob ME3								



Types of Work

Base Mid Crane Walk	MET Tower Completion	ME Crane Walk	Crane Breakdown	O & M Building Completion	Tension Base	Set Top Nacelle Hub	Off-Load Mid 2 Middle	Torque Tower
Stab Blades	Tension Blades	Wire Pull	Wire Terminations	Roll Blades	Install Lift Assist	Tower Cleaning	Mechanical Completion	Tower Walkdown
Install Turning Gear	Tower Complete							

Milestone Appearances

- Diamond

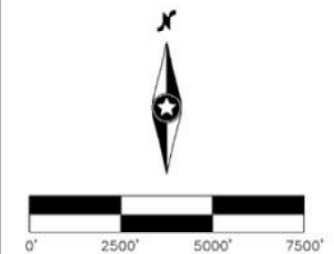
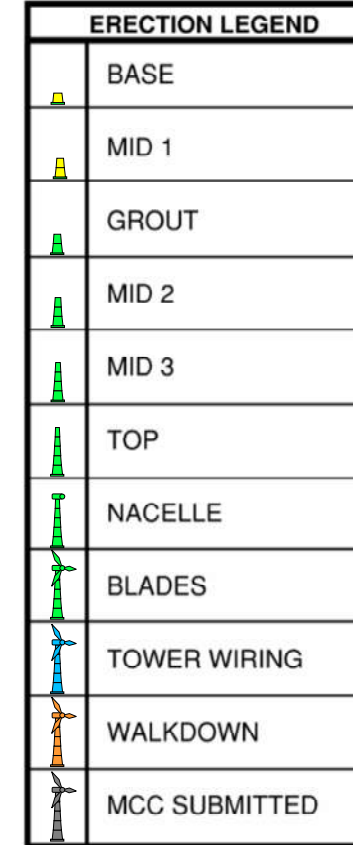
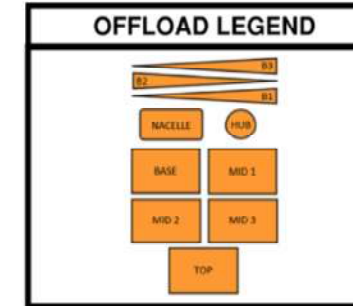
Exhibit C – Progress Map

KINGS POINT WIND

850 Base Line Rd
 Golden City, MO 64748

ERECTION VISIO

Updated Start of Day 2/9/2021



**Kings Point
 Wind Project**
 Jasper, Barton, Dade, and
 Lawrence County, Missouri

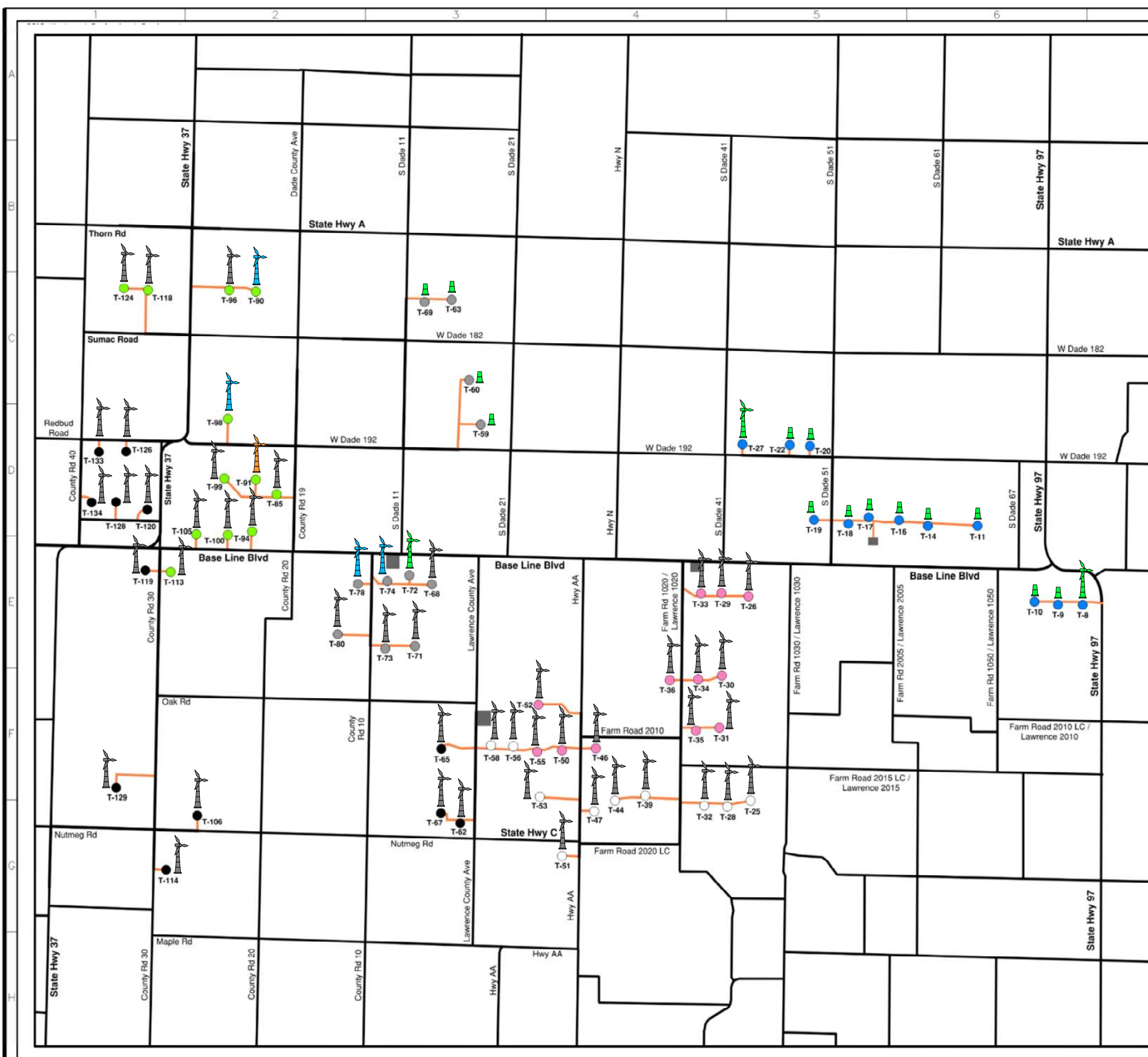


Exhibit D – Open RFI Log



RFI LOG

#	Subject	Status	Responsible Contractor	Received From	Assignee	Date Initiated	RFI Manager	Due Date	Closed Date	Ball In Court	Location	Schedule Impact	Cost Code	Cost Impact
149	Collection Line Markers	Open	Mortenson - Power...	Voegtly, Keaton (Mortenson - Power Delivery Solutions)	Pellinen, Matt (S...	01/29/2021	Keaton Voegtly	02/01/2021		Pellinen, Matt (S...				
134	Transmission - STR 65 - 68 Distribution Concerns	Open		None	Rooney, Shaen (Li... Pellinen, Matt (S... Stevens, Michael ...	10/13/2020	Rion Mott	10/16/2020		Mott, Rion (Morte...				

Exhibit E – Open Submittal Log



All Submittals

Spec Section	#	Rev.	Title	Type	Status	Responsible Contractor	Final Due Date	Submit By	Location	Received From	Received Date	Ball In Court	Approvers	Response	Sent Date	Returned Date	Due Date	Distributed Date
W33 - Met Towers	W33-1	2	Preliminary Met Tower Foundation Drawings	Document	Open	Vikor Inc	08/07/2020						Matt Pellinen (Solas Energy Consulting)	Submitted Pending	10/13/2020 10/13/2020	10/13/2020	07/31/2020 08/07/2020	
W31 - O&M Building	W31-32	1	O and M Storage Building Sign		Open	Mortenson - Wind Energy	12/17/2020		O & M	Smit Khapuwala			Matt Pellinen (Solas Energy Consulting)	Approved Pending	12/04/2020 12/04/2020	12/09/2020	12/17/2020 12/17/2020	
W31 - O&M Building	W31-32	0	O and M Storage Building Sign		Open	Mortenson - Wind Energy	12/17/2020		O & M	Smit Khapuwala			Smit Khapuwala (Mortenson - Wind Energy)	Revise And Resubmit Revise And Resubmit	12/03/2020 12/03/2020	12/03/2020 12/04/2020	12/17/2020 12/17/2020	
W25-05 - Steel Structures and Overhead Bus	W25-05-1	0	Substation Stairs and Stair Landing		Open								Keaton Voeghtly (Mortenson - Power Delivery Solutions)					
W25 - Substation	W25-76	0	Kings Point - NERC PRC-024-2		Open	Mortenson - Engineering Services Group	10/30/2020			Katie Dunphy			Katie Dunphy (Mortenson - Engineering Services Group)	Approved As Noted Approved As Noted	10/16/2020 10/16/2020	11/01/2020 11/01/2020	10/30/2020 10/30/2020	
W25 - Substation	W25-75	0	Kings Point - NERC FAC-002-2 Issue for Review		Open	Mortenson - Engineering Services Group	10/26/2020			Katie Dunphy			Katie Dunphy (Mortenson - Engineering Services Group)	Approved Approved	10/12/2020 10/12/2020	10/27/2020 10/27/2020	10/26/2020 10/26/2020	
W25 - Substation	W25-73	0	Kings Point Substation Arc Flash - Issue for Review		Open	Mortenson - Engineering Services Group	09/28/2020			Katie Dunphy			Katie Dunphy (Mortenson - Engineering Services Group)	Approved As Noted Approved	09/14/2020 09/14/2020	10/01/2020 10/01/2020	09/28/2020 09/28/2020	



Spec Section	#	Rev.	Title	Type	Status	Responsible Contractor	Final Due Date	Submit By	Location	Received From	Received Date	Ball In Court	Approvers	Response	Sent Date	Returned Date	Due Date	Distributed Date	
													Energy Storage & Solutions)						
W25 - Substation	W25-70	0	Kings Point Relay Settings - Issue for Review		Open	Mortenson - Engineering Services Group	08/13/2020			Katie Dunphy		Ella Rose (Burns & McDonnell)	Shaen Rooney (Liberty Utilities (Missouri)) Ella Rose (Burns & McDonnell)	Approved As Noted Pending	07/30/2020 07/30/2020	09/02/2020	08/13/2020 08/13/2020		
W25 - Substation	W25-54	0	Substation Surface Rock		Open							Keaton Voegtly (Mortenson - Power Delivery Solutions)							
W25 - Substation	W25-53	0	Current Limiting Reactor		Open							Keaton Voegtly (Mortenson - Power Delivery Solutions)							
W25 - Substation	W25-39	0	Concrete Field Testing Results (For Record)		Open							Keaton Voegtly (Mortenson - Power Delivery Solutions)							
W25 - Substation	W25-38	0	Finish Rock		Open							Keaton Voegtly (Mortenson - Power Delivery Solutions)							
W25 - Substation	W25-07	2	Substation - Capacitor Bank	Shop Drawings	Open		07/27/2020					Yasir Albaqqal (Mortenson - Power Delivery Solutions)	Kyle Kraus (Mortenson - Engineering Services Group) Matt Pellinen (Solas Energy Consulting)	Approved As Noted Approved	07/13/2020 07/13/2020	09/08/2020 09/02/2020	07/27/2020 07/27/2020		
W25 - Substation	W25-5	0	Third Party P&C Review		Open	Mortenson - Engineering Services Group	01/14/2020			Tami Anderson		Tammy Abbey (Mortenson - Power Delivery Solutions)	Ruth Johnson (Barr Engineering Company)	For Record Only		01/20/2020	01/14/2020		
W23 - SCADA	W23-2	0	HMI Screen Go-By		Open	Mortenson - Engineering Services Group	01/03/2020			Tami Anderson		Tammy Abbey (Mortenson - Power Delivery Solutions)	Shaen Rooney (Liberty Utilities (Missouri))	Approved As Noted	12/20/2019	01/06/2020	01/03/2020		
W17 - Underground Collection System	W17-36	0	Collection - MV cables test reports		Open		07/13/2020					Yasir Albaqqal (Mortenson - Power Delivery Solutions)	Steve Lay (Mortenson - Engineering Services Group)	For Record Only	06/30/2020	07/16/2020	07/13/2020		
W17 - Underground Collection System	W17-33	0	MV Cable, Junction Box, and Line Marker Labels		Open							Keaton Voegtly (Mortenson - Power Delivery Solutions)							
W17 -	W17-29	0	Vestas Basic		Open							Keaton Voegtly							



Spec Section	#	Rev.	Title	Type	Status	Responsible Contractor	Final Due Date	Submit By	Location	Received From	Received Date	Ball In Court	Approvers	Response	Sent Date	Returned Date	Due Date	Distributed Date	
Underground Collection System			Switchgear									(Mortenson - Power Delivery Solutions)							
W17 - Underground Collection System	W17-28	0	Concrete for Junction Box Base		Open							Keaton Voegtly (Mortenson - Power Delivery Solutions)							
W17 - Underground Collection System	W17-27	0	Crushed Rock for Junction Box		Open							Keaton Voegtly (Mortenson - Power Delivery Solutions)							
W17 - Underground Collection System	W17-25	0	J-Box Conduit		Open							Keaton Voegtly (Mortenson - Power Delivery Solutions)							
W17 - Underground Collection System	W17-23	0	3-Way Junction Mounting Hardware		Open							Keaton Voegtly (Mortenson - Power Delivery Solutions)							
W17 - Underground Collection System	W17-22	0	Junction Box Extension		Open							Keaton Voegtly (Mortenson - Power Delivery Solutions)							
W17 - Underground Collection System	W17-21	0	3-Way Junction Box		Open							Keaton Voegtly (Mortenson - Power Delivery Solutions)							
W17 - Underground Collection System	W17-18	0	Bollard		Open							Keaton Voegtly (Mortenson - Power Delivery Solutions)							
W17 - Underground Collection System	W17-17	0	Bollard Concrete		Open							Keaton Voegtly (Mortenson - Power Delivery Solutions)							
W17 - Underground Collection System	W17-16	0	Pea Gravel		Open							Keaton Voegtly (Mortenson - Power Delivery Solutions)							
W17 - Underground Collection System	W17-15	0	Splice Closure and Tray		Open							Keaton Voegtly (Mortenson - Power Delivery Solutions)							
W17 - Underground Collection System	W17-14	0	Handhole Enclosure		Open							Keaton Voegtly (Mortenson - Power Delivery Solutions)							



Spec Section	#	Rev.	Title	Type	Status	Responsible Contractor	Final Due Date	Submit By	Location	Received From	Received Date	Ball In Court	Approvers	Response	Sent Date	Returned Date	Due Date	Distributed Date
W17 - Underground Collection System	W17-6	0	Ground Rock		Open							Keaton Voegtly (Mortenson - Power Delivery Solutions)						
W17 - Underground Collection System	W17-4	0	T-Body Elbow Connectors	Product Data	Open	Mortenson - Power Delivery Solutions	04/23/2020					Carol Svare (Mortenson - Power Delivery Solutions)	Carol Svare (Mortenson - Power Delivery Solutions) Tami Anderson (Mortenson - Engineering Services Group) Eric Frank (Mortenson - Engineering Services Group) Steve Lay (Mortenson - Engineering Services Group)	Submitted Approved As Noted Approved As Noted Approved As Noted	04/09/2020 04/09/2020 04/09/2020	04/09/2020 04/23/2020 04/24/2020	04/09/2020 04/23/2020 04/23/2020	
W11 - WTG Erection	W11-4	2	Owner - WTG/ Erection Job Books Table of Contents		Open	Mortenson - Wind Energy	10/26/2020			Aaron Miller		Aaron Miller (Mortenson - Wind Energy)	Logan Bell (Solas Energy Consulting)	Approved As Noted	10/26/2020	10/26/2020	10/26/2020	
W11 - WTG Erection	W11-4	1	Owner - WTG/ Erection Job Books Table of Contents		Open	Mortenson - Wind Energy	10/26/2020			Aaron Miller		Aaron Miller (Mortenson - Wind Energy)	Logan Bell (Solas Energy Consulting)	Approved		02/03/2021	10/26/2020	
W11 - WTG Erection	W11-4	0	Owner - WTG/ Erection Job Books Table of Contents		Open	Mortenson - Wind Energy	10/26/2020			Aaron Miller		Aaron Miller (Mortenson - Wind Energy)	Logan Bell (Solas Energy Consulting)	Revise And Resubmit		10/23/2020	10/26/2020	
W11 - WTG Erection	W11-3	0	Anchor Bolt Caps		Open		10/05/2020					Aaron Miller (Mortenson - Wind Energy)	Matt Pellinen (Solas Energy Consulting)	Approved	09/21/2020	09/21/2020	10/05/2020	
W09 - Foundation Conduit and Grounding	W09-3	0	Power Conduit Through Anchor Bolts		Open							Keaton Voegtly (Mortenson - Power Delivery Solutions)						
W07 - Foundations	W07-50	0	Geotechnical Engineer's Subgrade Inspection Report - Engineered Fill	Document	Open	Mortenson - Civil Group	01/04/2021		All Site	Jalen Saunders		Jalen Saunders (Mortenson - Civil Group)	Charles Beauzay (Barr Engineering Company)	Revise And Resubmit	12/21/2020	12/21/2020	01/04/2021	
W07 - Foundations	W07-47	0	Stone Column Testing and Inspection Reports		Open		12/30/2020					Thea Daguison (Mortenson - Energy Storage & Solutions)	Thea Daguison (Mortenson - Energy Storage & Solutions) Charles Beauzay (Barr Engineering Company)	Submitted Approved	12/05/2020	12/05/2020 12/07/2020	12/16/2020 12/30/2020	



Spec Section	#	Rev.	Title	Type	Status	Responsible Contractor	Final Due Date	Submit By	Location	Received From	Received Date	Ball In Court	Approvers	Response	Sent Date	Returned Date	Due Date	Distributed Date
W07 - Foundations	W07-25	0	Geotechnical Engineer's Subgrade Inspection Report	Test Reports	Open		12/30/2020	06/01/2020				Jalen Saunders (Mortenson - Civil Group)	Jalen Saunders (Mortenson - Civil Group) Charles Beauzay (Barr Engineering Company)	Pending Pending			12/16/2020 12/30/2020	
W07 - Foundations	W07-24	0	Engineer Fill Compaction Under Foundation	Test Reports	Open		12/30/2020	06/01/2020				Jalen Saunders (Mortenson - Civil Group)	Jalen Saunders (Mortenson - Civil Group) Charles Beauzay (Barr Engineering Company)	Pending Pending			12/16/2020 12/30/2020	
W07 - Foundations	W07-21	0	Grout Cube Strength Test Results	Test Reports	Open		03/05/2021	10/30/2020				Mitch Holsinger (Mortenson - Wind Energy) Aaron Miller (Mortenson - Wind Energy)	Aaron Miller (Mortenson - Wind Energy) Charles Beauzay (Barr Engineering Company)	Pending Pending Pending			02/19/2021 02/19/2021 03/05/2021	
W07 - Foundations	W07-20	0	Anchor Bolt Tension Test Data	Test Reports	Open			10/30/2020				Tony Iglesias Ramirez (Mortenson - Wind Energy)						
W07 - Foundations	W07-7	0	Common Backfill Reports	Field Quality-Control Reports	Open		12/30/2020	06/25/2020				Jalen Saunders (Mortenson - Civil Group)	Jalen Saunders (Mortenson - Civil Group) Charles Beauzay (Barr Engineering Company)	Pending Pending			12/16/2020 12/30/2020	
W05 - Crane Pads and WTG Erection Areas	W05-1	0	Proposed Crane Path	Coordination Drawings	Open	Mortenson - Wind Energy	08/18/2020		Crane Path	Zach Burds		Zach Burds (Mortenson - Wind Energy)	Matt Pellinen (Solas Energy Consulting) Taylor Schriener (Westwood Professional Services Inc)	Approved For Record Only	08/11/2020 09/24/2020	09/24/2020 09/25/2020	08/18/2020 08/18/2020	
W01 - Supervision and Field Office	W01-4	1	Job Book - Substantial Completion - Master Table of Contents		Open	Mortenson - Wind Energy	02/13/2021			Aaron Miller		Logan Bell (Solas Energy Consulting)	Logan Bell (Solas Energy Consulting)	Pending	02/04/2021		02/13/2021	
W01 - Supervision and Field	W01-4	0	Job Book - Substantial Completion - Master		Open	Mortenson - Wind Energy	02/13/2021			Aaron Miller		Aaron Miller (Mortenson - Wind Energy)	Logan Bell (Solas Energy Consulting)	Revise And Resubmit	01/30/2021	02/04/2021	02/13/2021	



Spec Section	#	Rev.	Title	Type	Status	Responsible Contractor	Final Due Date	Submit By	Location	Received From	Received Date	Ball In Court	Approvers	Response	Sent Date	Returned Date	Due Date	Distributed Date	
Office			Table of Contents																

Exhibit F – Cost Issue Log



Kings Point Wind

*HC*Highly Confidential in its Entirety*HC*

[REDACTED]

[REDACTED]

[REDACTED]	[REDACTED]	[REDACTED]	[REDACTED]	[REDACTED]	[REDACTED]	[REDACTED]
[REDACTED]	[REDACTED]	[REDACTED]	[REDACTED]	[REDACTED]	[REDACTED]	[REDACTED]

[REDACTED]

[REDACTED]	[REDACTED]	[REDACTED]	[REDACTED]	[REDACTED]	[REDACTED]	[REDACTED]
[REDACTED]	[REDACTED]	[REDACTED]	[REDACTED]	[REDACTED]	[REDACTED]	[REDACTED]

[REDACTED]

[REDACTED]	[REDACTED]	[REDACTED]	[REDACTED]	[REDACTED]	[REDACTED]	[REDACTED]
[REDACTED]	[REDACTED]	[REDACTED]	[REDACTED]	[REDACTED]	[REDACTED]	[REDACTED]
[REDACTED]	[REDACTED]	[REDACTED]	[REDACTED]	[REDACTED]	[REDACTED]	[REDACTED]
[REDACTED]	[REDACTED]	[REDACTED]	[REDACTED]	[REDACTED]	[REDACTED]	[REDACTED]
[REDACTED]	[REDACTED]	[REDACTED]	[REDACTED]	[REDACTED]	[REDACTED]	[REDACTED]
[REDACTED]	[REDACTED]	[REDACTED]	[REDACTED]	[REDACTED]	[REDACTED]	[REDACTED]

[REDACTED]

[REDACTED]	[REDACTED]	[REDACTED]	[REDACTED]	[REDACTED]	[REDACTED]	[REDACTED]
[REDACTED]	[REDACTED]	[REDACTED]	[REDACTED]	[REDACTED]	[REDACTED]	[REDACTED]
[REDACTED]	[REDACTED]	[REDACTED]	[REDACTED]	[REDACTED]	[REDACTED]	[REDACTED]
[REDACTED]	[REDACTED]	[REDACTED]	[REDACTED]	[REDACTED]	[REDACTED]	[REDACTED]
[REDACTED]	[REDACTED]	[REDACTED]	[REDACTED]	[REDACTED]	[REDACTED]	[REDACTED]

[REDACTED]

[REDACTED]	[REDACTED]	[REDACTED]	[REDACTED]	[REDACTED]	[REDACTED]	[REDACTED]
------------	------------	------------	------------	------------	------------	------------

[REDACTED]

[REDACTED]	[REDACTED]	[REDACTED]	[REDACTED]	[REDACTED]	[REDACTED]	[REDACTED]
[REDACTED]	[REDACTED]	[REDACTED]	[REDACTED]	[REDACTED]	[REDACTED]	[REDACTED]

[REDACTED]

[REDACTED]

[REDACTED]

[REDACTED]



Kings Point Wind

*HC*Highly Confidential in its Entirety*HC*

[REDACTED]

[REDACTED]

[REDACTED]	[REDACTED]	[REDACTED]	[REDACTED]	[REDACTED]	[REDACTED]	[REDACTED]
[REDACTED]	[REDACTED]	[REDACTED]	[REDACTED]	[REDACTED]	[REDACTED]	[REDACTED]
[REDACTED]	[REDACTED]	[REDACTED]	[REDACTED]	[REDACTED]	[REDACTED]	[REDACTED]
[REDACTED]	[REDACTED]	[REDACTED]	[REDACTED]	[REDACTED]	[REDACTED]	[REDACTED]

[REDACTED]	[REDACTED]	[REDACTED]	[REDACTED]	[REDACTED]	[REDACTED]	[REDACTED]
[REDACTED]	[REDACTED]	[REDACTED]	[REDACTED]	[REDACTED]	[REDACTED]	[REDACTED]
[REDACTED]	[REDACTED]	[REDACTED]	[REDACTED]	[REDACTED]	[REDACTED]	[REDACTED]
[REDACTED]	[REDACTED]	[REDACTED]	[REDACTED]	[REDACTED]	[REDACTED]	[REDACTED]
[REDACTED]	[REDACTED]	[REDACTED]	[REDACTED]	[REDACTED]	[REDACTED]	[REDACTED]
[REDACTED]	[REDACTED]	[REDACTED]	[REDACTED]	[REDACTED]	[REDACTED]	[REDACTED]
[REDACTED]	[REDACTED]	[REDACTED]	[REDACTED]	[REDACTED]	[REDACTED]	[REDACTED]
[REDACTED]	[REDACTED]	[REDACTED]	[REDACTED]	[REDACTED]	[REDACTED]	[REDACTED]
[REDACTED]	[REDACTED]	[REDACTED]	[REDACTED]	[REDACTED]	[REDACTED]	[REDACTED]

[REDACTED]	[REDACTED]	[REDACTED]	[REDACTED]	[REDACTED]	[REDACTED]	[REDACTED]
[REDACTED]	[REDACTED]	[REDACTED]	[REDACTED]	[REDACTED]	[REDACTED]	[REDACTED]
[REDACTED]	[REDACTED]	[REDACTED]	[REDACTED]	[REDACTED]	[REDACTED]	[REDACTED]

[REDACTED]	[REDACTED]	[REDACTED]	[REDACTED]	[REDACTED]	[REDACTED]	[REDACTED]
[REDACTED]	[REDACTED]	[REDACTED]	[REDACTED]	[REDACTED]	[REDACTED]	[REDACTED]

[REDACTED]

[Redacted]

*HC*Highly Confidential in its Entirety*HC*

[Redacted]	[Redacted]	[Redacted]	[Redacted]	[Redacted]	[Redacted]	[Redacted]	[Redacted]
[Redacted]	[Redacted]	[Redacted]	[Redacted]	[Redacted]	[Redacted]	[Redacted]	[Redacted]
[Redacted]	[Redacted]	[Redacted]	[Redacted]	[Redacted]	[Redacted]	[Redacted]	[Redacted]
[Redacted]	[Redacted]	[Redacted]	[Redacted]	[Redacted]	[Redacted]	[Redacted]	[Redacted]
[Redacted]	[Redacted]	[Redacted]	[Redacted]	[Redacted]	[Redacted]	[Redacted]	[Redacted]
[Redacted]	[Redacted]	[Redacted]	[Redacted]	[Redacted]	[Redacted]	[Redacted]	[Redacted]
[Redacted]	[Redacted]	[Redacted]	[Redacted]	[Redacted]	[Redacted]	[Redacted]	[Redacted]
[Redacted]	[Redacted]	[Redacted]	[Redacted]	[Redacted]	[Redacted]	[Redacted]	[Redacted]
[Redacted]	[Redacted]	[Redacted]	[Redacted]	[Redacted]	[Redacted]	[Redacted]	[Redacted]
[Redacted]	[Redacted]	[Redacted]	[Redacted]	[Redacted]	[Redacted]	[Redacted]	[Redacted]
[Redacted]	[Redacted]	[Redacted]	[Redacted]	[Redacted]	[Redacted]	[Redacted]	[Redacted]
[Redacted]	[Redacted]	[Redacted]	[Redacted]	[Redacted]	[Redacted]	[Redacted]	[Redacted]
[Redacted]	[Redacted]	[Redacted]	[Redacted]	[Redacted]	[Redacted]	[Redacted]	[Redacted]
[Redacted]	[Redacted]	[Redacted]	[Redacted]	[Redacted]	[Redacted]	[Redacted]	[Redacted]
[Redacted]	[Redacted]	[Redacted]	[Redacted]	[Redacted]	[Redacted]	[Redacted]	[Redacted]
[Redacted]	[Redacted]	[Redacted]	[Redacted]	[Redacted]	[Redacted]	[Redacted]	[Redacted]
[Redacted]	[Redacted]	[Redacted]	[Redacted]	[Redacted]	[Redacted]	[Redacted]	[Redacted]
[Redacted]	[Redacted]	[Redacted]	[Redacted]	[Redacted]	[Redacted]	[Redacted]	[Redacted]
[Redacted]	[Redacted]	[Redacted]	[Redacted]	[Redacted]	[Redacted]	[Redacted]	[Redacted]
[Redacted]	[Redacted]	[Redacted]	[Redacted]	[Redacted]	[Redacted]	[Redacted]	[Redacted]

[Redacted]

[Redacted]

[Redacted]

[Redacted]

Kings Point Wind

*HC*Highly Confidential in its Entirety*HC*

[REDACTED]

[REDACTED]

[REDACTED]

[REDACTED]

[REDACTED]

[REDACTED]

[REDACTED]

[REDACTED]

Exhibit G – Permit Matrix

Kings Point Wind, LLC - Permit Matrix							
Item	Agency	Permit / Approval	Description	Responsibility	Status	Notes	Uploaded in Procore
FEDERAL PERMITS							
1a	Federal Energy Regulatory Commission (FERC)	Large Generator Interconnection Agreement (LGIA) or interim LGIA	Must be filled out for any generating facility having a capacity of more than 20 MW.	Owner	Complete		1. LGIA Report
1b		Market-Based Rate Authority and Tariff		Owner	Complete	2/17 - Liberty will file a week before the 60 days prior to test energy 7/10 - Uploaded FERC Affiliate Waiver	1. FERC Affiliate Waiver
1c		FPA Sec 204 Authority		Owner	Complete	2/7 - Not needed per Becky	
2a	Environmental Protection Agency (Region 7) (EPA) in coordination with the state if required	Phase 1 Environmental Site Assessment	CERCLA governs liability for contaminated properties. 42 U.S.C. § 9601 et seq.	Owner	Complete	3/12 - Received the Final Phase 1 ESA Report - address any unforeseen hazardous/conditions: stop all work and discuss with environmental team	1. Phase 1 ESA Report
2b		Spill Prevention Control and Countermeasure (SPCC) Plan	Needed if turbine commissioning or construction activities will require oil storage in excess of 1320 gallons.	Contractor	Complete	5/28 - finalizing SPCC after receiving comments from Westwood's visit on 4/21 6/11 - Signed SPCC is uploaded to Procore	1. Signed SPCC
3	Federal Communications Commission (FCC) / National Telecommunications and Information Administration ("NTIA")	Letters of Concurrence	Microwave and Beam Path Study Telecommunications Act of 1996 Compliance with the Telecommunications Act of 1996. 47 U.S.C. § 151 et seq. 47 CFR 1.4000. Regulations regarding interference with "over-the-air" reception devices" ("OTARD") as demonstrated in Microwave and Beam Path Study and acknowledgment from NTIA. Once applicants obtain a No Hazard Determination from the FAA, the ASR requires applicants to submit the FAA's study number, along with FCC Form 854, to the Commission.	Owner	Complete	2/7 - CommSearch (did the report) is working on submitting the final docs 4/2 - All repeaters are in compliance with FCC licenses	1. Microwave Beam Path Report 2. NTIA
4	U.S. Department of Energy Information Administration (EIA)	EIA 860 (and extension form 860-M)	Pursuant to 15 U.S.C. 772, all electric generating plants that have or will have a nameplate rating of 1 MW or more, and that are operating or plan to be operating within 5 years must complete and submit Form EIA 860 (and by extension, form 860-M) to the EIA (a division of the Department of Energy) within 18 months of the generator beginning commercial operations.	Owner	Complete	3/12 - An additional annual report will be uploaded in March in Procore (W34-7 Rev 1)	1. EIA 860 Report
5a	U.S. Department of Agriculture (USDA)	Conservation / Grassland / Wetland Easement and Reserve Agriculture Program Releases and Consents ("CRP")	Required for addition of project structures on properties enrolled in reserve programs require federal approval. Releases for any property removed from Conservation Easement, Grassland Easement, or Wetland Easement Programs.	Owner	Complete	2/7 - property owner needs to complete the process; in progress 9.15.2020 Landowner (Schuchmann) kept property in CRP, but there are no infrastructures of any kind on property.	1. (2) documents of Conservation Reserve Program Contract
5b		Form AD-1006	If federal agencies are involved then the Farmland Protection Policy Act (FPP A) requires a review of the conversion of prime farmland to other uses	Owner	Complete	2/7 - property owner needs to complete the process; in progress 5/2 - possibly not applicable for Kings Point 6/3 Becky - Action Item: Becky to respond on Procore stating this is not applicable to Kings Point	
5c		FSA Mortgage Subordinations & Site-Specific Environmental Assessments	Required if FSA mortgage is in place on parcel. Associated with FSA Mortgage Site-Specific Environmental Subordinations Assessments	Owner	Complete	2/7 - property owner needs to complete the process; in progress 5/2 - possibly not applicable for Kings Point 6/3 Becky - Action Item: Becky to respond on Procore stating this is not applicable to Kings Point	
6a	U.S. Fish and Wildlife Service (USFWS) - Missouri Ecological Services Field Office	Section 7 Consultations (Endangered Species Act)	Required under the Endangered Species Act to ensure the effects of the federal action (i.e., USFWS take permits and USACE Clean Water Act Sec 404 permit) will not adversely affect threatened or endangered species. Regulates the incidental take of gray bats or bald or golden eagles as well as the temporary and permanent impacts to waters of the United States. Federal action agency (USFWS and Corps of Engineers) will issue a Biological Assessment to USFWS which starts either an informal consultation leading to concurrence, or a formal consultation leading to a Biological Opinion and likely an ESA Sec 10 Incidental Take Permit.	Owner	Complete	1. Bird Bat Work Plan 2. Site Characterization Study 3. Eagle Conservation Plan - DRAFT & waiting on finalized report 4. Habitat Conservation Plan Becky submitted permit application for Eagle Plan 2/7 - Submitted the eagle incidental take permit and will upload final reports in Procore 7/10 - Environmental Compliance is completed	1. Environmental Compliance
6b		Technical Assistance Letter	Bridge to Incidental Take Permit for gray bat, and comfort from USFWS that the Project Company is taking appropriate action to protect all threatened and endangered species during construction and operations until the ITP is issued. Voluntary action by the Project Company. Terms are negotiated with USFWS.	Owner	Complete	12/10 - We have	1. TAL
7	U.S. Army Corps of Engineers (USACE) - Little Rock District	Clean Water Act, Section 404; Nationwide Permits (NWP) 12, 14, 33, 51	Meet the threshold conditions of temporary and permanent impacts to jurisdictional waters for each NWP.	Owner	In Progress	4/2 - Final signature pending until end of project (Liberty's court)	1. USACE Letter
8a	Federal Aviation Administration (FAA) - Central Region Office	Federal Aviation Administration Notification Form 7460-1	Determination of No Hazard (DNH) for the applicable structures	Owner	Complete	3/12 - NFR DNH uploaded in Procore	1. DNH Letters 2. Aeronautical Study List
8b		Federal Aviation Administration Notification Form 7460-2	Submit Form 7460-2 on a schedule in accordance with the DNH for applicable structures	Owner and Contractor ⁽¹⁾	In Progress	4/2 - MAM to submit bi-weekly reports on the final elevations of each turbine erected within 5 days 10/26 - MAM continuing to send bi-weekly reports	
9	Federal Emergency Management Administration (FEMA) - Missouri Water Resources Board - Missouri Floodplain Managers Associations- Barton and Jasper counties	Floodplain Development Permit	Required for structures within the 100 year flood plain. A permit is required for development (substantial improvement to a structure, or new fill, excavation, or other floodplain use) from the floodplain board or accredited floodplain administrator.	Owner	Complete	2/7 - Liberty needs additional info from Scott Rowland; close to being finalized 3/12 - Open RFI discussing 5/2 - Liberty working on submittal 6/3 - Permit uploaded in Procore	1. Flood Plain Permit
10	Federal Land Manager (BLM, USBR, Forest Service)	Right Of Way Crossing Permits	Right-of-Way grant over federal lands. Not required if project does not cross federal lands. Not applicable under proposed site plan.	Owner	Complete	Project will not cross federal lands - Not Applicable per Becky	
STATE PERMITS							
11	Missouri Public Service Commission Utilities Board	Certificate of Public Convenience, Use, and Necessity		Owner	Complete		1. Appendix A 2. Certificate
12	Missouri Water Resources Board	Flood Plain Permit	A permit is required for development (substantial improvement to a structure, or new fill, excavation, or other floodplain use) from the floodplain board or accredited floodplain administrator.	Owner and Contractor ⁽¹⁾	Complete	3/12 - Liberty is working on finalizing flood plain permit 5/2 - Liberty to upload on Procore (reference Item 9 above) 6/3 - Permit uploaded in Procore (reference Item 9)	1. Flood Plain Permit
13a	Missouri Department of Natural Resources (MDNR)	Missouri Land Disturbance Permit	National Pollutant Discharge Elimination System Permit - Storm water Discharge Associated with Construction. Required for storm water runoff from construction areas > 1 acre Submit a Notice of Intent (NOI) and a Storm water Pollution Prevention Plan (SWPPP) as required by MDNR. Submit Notice of Termination (NOT) prior to site being stabilized as required by MDNR 303(d) waters might have additional discharge restrictions outlined in the SWPPP	Owner and Contractor ⁽²⁾	Complete		1. SWPPP Narrative (documents section of Procore) 2. NOI
13b		New Source Review Permit (Construction Permit)	Required if a concrete batch plant will be onsite during wind farm construction.	Contractor	Complete	12/10 - We have air quality & discharge permits uploaded in Procore.	1. Air Quality Permit 2. Discharge Permit
13c		Clean Water Act Section 401 Water Quality Certification	Regulates Federally permitted activities (Section 404 Individual or NWP) that results in discharges to waters of the U.S. that could violate state water quality standards 401 Water Quality Certification from MDNR is required. Certification is automatically granted for certain Nationwide Permits as long as permit conditions are followed.	Owner	Complete	3/12 - General and Specific Conditions was submitted but not the actual Certification	1. Clean Water 401 Certification 2. Signed NWP Letter 3. NWP 12, 14, 33
13d		Water well permit (private)		Contractor	Complete	4/2 - uploaded in Procore	1. KP Water Well Permit

13e		Water Use registration	Any surface or groundwater user with a water source and the equipment necessary to withdraw or divert 100,000 gallons or more per day (70 gallons per minute) from any stream, river, lake, well, spring or other water source is considered a major water user in Missouri. All major water users are required by law to register water use annually. The Department of Natural Resources does not regulate the use of water – only the amount of water a major water user has the potential to use.	Contractor	Complete	Batch plant will only be using 30,000 gallons/day. 5/27 - MAM working on rural water connection for O&M building then obtain a formalized document for water connection 7/17 - MAM need to submit "Requesting Connection Form" 8/13 - New Meter Agreement uploaded in Procure	1. New Meter Agreement	
14	Missouri State Historic Preservation Office (SHPO)	Concurrence that the federal action (CWA Sec 404 permit) will have <i>little likelihood to cause effect</i> on cultural resources within each federal action area. (National Historic Preservation Act Section 106.)	Consultation with MoSHPO may be required under Section 106 of the National Historic Preservation Act (NHPA) if the federal action agency cannot reach a <i>little likelihood to cause effect</i> conclusion. Archaeological and architectural surveys and preparations of reports. Consultation with MoSHPO may be required if the federal action agency cannot reach a <i>little likelihood to cause effect</i> conclusion. Government-to-government consultation with Tribes will occur.	Owner	Complete		1. SHPO Letters	
15a		Missouri Highways and Transportation Commission Permit to Work on Right of Way Non-Local Government Projects	Required for any work within MoDOT maintained rights-of-way. Authorization for equipment, manpower, ect to perform work in ROW. Maintenance Agreement required to perform road upgrades and maintenance during construction	Owner and Contractor ⁽¹⁾	Complete	5/2 - ROW Agreement uploaded on Procure by Becky	1. KP MoDot Maintenance Agreement	
15b		Entrance / Excavation Permits	For temporary and permanent access driveways off State roads. Also applies to intersection modifications	Owner and Contractor ⁽⁴⁾	Complete	5/2 - County and MODot entrance permits are uploaded on Procure		
15c	Department of Transportation	Utility Permits - Collection	Applies to all collection lines that enter the state right-of-way	Owner and Contractor ⁽⁴⁾	Complete	5/28 - Collection IFC obtained on 5/22 6/3 - ROW bore permits for Lawrence (Hwy C and AA) is obtained; currently working on permits for Jasper 7/10 - ROW bore permits for Jasper obtained; waiting on Magellan permits 7/17 - Becky to upload Magellan and Souther Star Permit on Procure 8/10 - Received Magellan confirmation to proceed; waiting on Agreement documents 8/18 - Becky to upload Magellan and Souther Star Agreements on Procure to close out this submittal Both agreements available to upload	Bore Permits: 1. RT AA 2. RT C 3. Sumac Rd, Ridge Rd 30, CR 30, CR 10 4. RT C 5. Rte NN 6. Rte NN Dade 7. Rte NN Dade 8. Rte 37 9. Rte B	
15d		Utility Permits - Gen-Tie		Owner and Contractor ⁽⁴⁾	Complete	4/2 - Obtained T-Line IFC. 6/3 - MAM working on final exhibits to provide to Magellan. Will Southern Star need similar exhibits? 6/3 Becky - Action Item: Becky to discuss with Shaen Rooney and follow up with T-line permits especially Southern Star 8/18 - Becky to upload Magellan and Souther Star Agreements on Procure to close out this submittal Both agreements available to upload 10/26 - KAMO crane crossing permit amendment pending (Liberty's court) 11/3 - Becky to upload KAMO amendment on Procure 11/24 - Amendment uploaded to Procure	1. Southern Star Agreement 2. Magellan Pipeline Agreement	
15e		Oversize/Overweight Permit for State Highways	Delivery of oversized/ overweight project components	Contractor and Vestas ⁽⁵⁾	In Progress	Vestas to handle component delivery trucks. 5/2 - KP is aware they must file a permit with MODot engineer 10-14 days in advance to crawler crane crossing highways 5/27 - KP working on exhibits to provide MODOT 8/18 - KP team continuing to coordinate with MODot	Issued Permits: 1. RT AA & Farm Rd 2010 2. RT C & RT AA 3. RT NN & Dade 67 4. RT NN & Lawrence 1030	
16a	Missouri Department of Public Safety - Fire Safety	Notification of Blasting Operations	Any individual, proprietorship, partnership, firm, corporation, or company which uses explosives in Missouri shall register with the division prior to using explosives. The initial registration shall state the name of the person, address, telephone number, facsimile number, e-mail address, and name of the principal individual having responsibility for supervision of the use of explosives.	Contractor	Complete	5/4 - Blasting plan and license uploaded in Procure 6/3 Thea - Action Item: Upload email correspondence regarding the notification form 7/10 - Email Correspondence is on Procure already	1. KP Blasting Plan 2. KP Blasting License 3. Notification Form 4. Email Correspondence	
16b		Plan Review Submittal Form	State Statute 327.101 requires that any building which is more than 20,000 cubic feet in size OR has more than nine (9) occupants must have blueprints prepared by a registered architect.	Contractor		5/2 - Not required by MO Division of Fire Safety per Becky		
LOCAL PERMITS								
17a		Building Permit	If required	Contractor		2/7 - no zoning permit required for Lawrence per Becky		
17b		Waste water disposal - if required	If required	Contractor	Complete	5/2 - MAM working on getting an address for Substation; verify if we need it for the O&M as well 5/27 - Uploaded in Procure	1. Waste Water Tank Application	
17c		Oversize/ Overweight Permits	If required	Contractor and Vestas ⁽⁵⁾	Complete	Vestas to handle component delivery trucks. 5/2 - KP is aware we must notify Barton & Jasper Counties 24 hrs in advance to crawler crane crossings and notify Dade & Lawrence Counties 5 days in advance 8/13 - Obtained County points of contact for crane crossing notification		
17d	Barton, Jasper, Dade, Lawrence County [Kings Point Site]	Road Use Agreement and Project Implementation Agreement		Owner and Contractor ⁽⁶⁾	Complete		1. Jasper County RUA 2. Dade County RUA 3. Lawrence County RUA 4. Barton County RUA 5. KP MODot RUA 6. KP - Exhibit B Inspection Report 7. App 2 - Exhibit A.4 - RUA Cover Sheet	
17e		Utility and Pipeline Crossing Permits	Local utilities and pipelines crossings as required	Owner and Contractor ⁽⁷⁾	Complete	6/3 - See Item 15c and 15d for reference. MAM working on final exhibits to provide to Magellan. Will Southern Star need similar exhibits? 6/3 Becky - Action Item: Becky to discuss with Shaen Rooney and follow up with T-line permits especially Southern Star 8/18 - Becky to upload Magellan and Souther Star Agreements on Procure to close out this submittal Agreements available for upload	1. Southern Star Agreement 2. Magellan Pipeline Agreement	
17f		Jasper County Site Development Permit	Applies to disturbance on 1 acre or more. Not applicable to areas outside the unincorporated urbanized area of Jasper County.	Contractor		Not applicable to Kings Point project per Becky		
		Jasper County Railroad Crossing Permit			Complete	5/28 - T-line crosses over Railroad Tracks and needs to have concrete truck drive over railroad trucks for T-line foundations. 6/3 Becky - Action Item: Becky to discuss with Shaen Rooney and follow up with any permits necessary for Jasper rail road	1. Union Pacific Agreement	

(1) Contractor to assist in form development, Owner to submit.
(2) Contractor to provide Storm Water Pollution Prevention Plan; Owner files NOI and obtains the NPDES permit
(3) Owner shall obtain the permits identified in exhibits U-1 and U-2 to the MODot Road Use Agreement set forth in Appendix 4, Exhibit A.4. Contractor shall obtain all other permits necessary to perform work within the MODot right of way including but not limited to road widening, credit/in intersection
(4) Contractor shall be responsible for obtaining the identified permits, except that Owner shall post any required security.
(5) Contractor and Vestas to each obtain permits as necessary oversize/overweight loads, respectively.
(6) Contractor to perform necessary upgrades and maintenance during construction. Owner shall be responsible for posting any required security.
(7) Contractor to provide necessary support in obtaining such crossing permits and Owner to execute.
In the event that any permit is required to perform the work that is not identified above, Contractor or Owner, as applicable, shall promptly, after it becomes aware of the need for such permit, notify the other Party that such permit is required. Contractor or Owner, as applicable, shall be responsible

Exhibit H – Safety Reports



Safety and Quality Event Management

[Home/Search](#)

[Send Event Email](#)

Investigation Report

Initial Investigation Closed

Project Details at Time of Incident

Event Type	Incident	Event Number	EV2021232193
Event Subtype	Property Damage	Brief Description	A major snow and ice event hit site, causing damage to the blades socks, hatches, blade collars and hub fiberglass
Diamond Event	No	Project Manager	Butz, Lucas Arthur
Project Number	19141024	Project Superintendent	Langston, James
Project Name	Kings Point Wind	Area/Assistant Superintendent	Ellis, John
Address Line 1	850 Base Line Road	Address City, State Postal Code	Golden City, MO 64748
Address Line 2			
General Foreman/Foreman			
Date Occurred (MM/DD/YYYY)	01/02/2021	Time Occurred (HH:MM)	01:00 PM
Event Reported By	Mortenson	Name	Tims, Leon
Work Being Performed By	Mortenson	Name	Tims, Leon
Location of Incident	T113,T119,T100,T106,T118,T105		
Environmental Conditions at the time of the Incident	Temperature below 32 deg. F, Ice/Snow/Sleet, Windy		

Property Damage

Property Damage Type	New Construction	PropertyDamageSubType	
Ownership Type		OwningLeasingParty	Customer
Company Name		Telephone Number	
Damage Description	Heavy ice build up to blade socks causing the attachment ropes to break, then being bound up into the main bearing causing damage to the hub fiberglass, blade collars. Hatches were also damaged.	Damage Cause	Storm/Wind
Property Damage Estimated Value	\$5,001 - \$25,000	Damage Final Value	
Drug Testing Completed	No	No Drug Testing Completed Explanation	act of god.

Unsafe Conditions, Hazards, or Exposures

Description of unsafe conditions
Unsafe Conditions Include Cold Temperature

Attachments

There are currently no Attachments for this event.

Immediate Corrective Actions Taken

There are currently no Immediate Corrective Actions Taken for this event.

Links

There are currently no Links for this event.

Witnesses

There are currently no Witnesses for this event.

Preventive Actions Taken

There are currently no Preventive Actions Taken for this event.

Impacts

There are currently no Impacts for this event.

Subcontractor Task/Activity (Days)
Customer Project Schedule (Days)

Key Contributing Factors

There are currently no Key Contributing Factors for this event.

[Return To Home/Search](#)

[Document History](#)

Initial Report submitted by Miller, Aaron William on 1/4/2021 6:44:47 PM



Safety and Quality Event Management

[Home/Search](#)[Send Event Email](#)

Initial Report

Initial Closed

Project Details at Time of Incident

Event Type	Potential Incident	Event Number	EV2021232178
Event Subtype	Near Miss	Brief Description	While beginning to lift the second blade of the tower, it began slowly approaching the last blade sitting on its stand, causing slight contact between the blade on the ground and the counterweight of the blade gripper
Diamond Event	No	Project Manager	Butz, Lucas Arthur
Project Number	19141024	Project Superintendent	Hunt, Richard
Project Name	Kings Point Wind	Area/Assistant Superintendent	
Address Line 1	850 Base Line Road	Address City, State Postal Code	Golden City, MO 64748
Address Line 2			
General Foreman/Foreman			
Date Occurred (MM/DD/YYYY)	01/03/2021	Time Occurred (HH:MM)	11:30 PM
Event Reported By	Mortenson	Name	Hunt, Richard
Work Being Performed By	Mortenson	Name	Wing, Chaz
Location of Incident	T-124		
Environmental Conditions at the time of the Incident			
Temperature below 32 deg. F, Night/Dark			

Unsafe Conditions, Hazards, or Exposures

Person Exposed to Unsafe Condition or Hazard was Wearing	Hardhat, Hi-Vis Vest, Boots, Safety Glasses, Gloves		
Employed By	Mortenson	Name	Wing, Chaz
Description of unsafe conditions	Potential property damage of turbine components		
Unsafe Conditions Include	Property Damage		

Attachments

There are currently no Attachments for this event.

Immediate Corrective Actions Taken

There are currently no Immediate Corrective Actions Taken for this event.

Links

There are currently no Links for this event.

Witnesses

First Name	Last Name	Employed By	Company Name	Title	Phone
Richard	Hunt	Mortenson		Salaried.Superintendent.II	

[Return To Home/Search](#)[Document History](#)

Initial Report saved by Sehmer, Dillon Alan on 1/4/2021 2:14:23 PM

Mortenson Proprietary



Safety and Quality Event Management

[Home/Search](#)
[Send Event Email](#)

Investigation Report

 Initial Investigation Closed
Project Details at Time of Incident 

Event Type	Incident	Event Number	EV2021232243
Event Subtype	Property Damage	Brief Description	Team member was driving around a turbine component when his pickup truck began losing traction and slid to the side, causing contact with crane mats sitting next to the road
Diamond Event	No	Project Manager	Butz, Lucas
Project Number	19141024	Project Superintendent	Langston, James
Project Name	Kings Point Wind	Area/Assistant Superintendent	
Address Line 1	850 Base Line Road	Address City, State Postal Code	Golden City, MO 64748
Address Line 2			
General Foreman/Foreman			
Date Occurred (MM/DD/YYYY)	01/05/2021	Time Occurred (HH:MM)	12:00 PM
Event Reported By	Mortenson	Name	Conville, Donald
Work Being Performed By	Mortenson	Name	Manshack, Terry
Location of Incident	T-8		
Environmental Conditions at the time of the Incident			
Temperature 33 - 85 deg. F., Clear Sky, Other			
Other Description	Muddy		

Property Damage 

Property Damage Type	Vehicle	PropertyDamageSubType	
Ownership Type	Rented/Leased	OwningLeasingParty	Mortenson
Company Name		Telephone Number	
Damage Description	Front passenger door dented, ladder step bent		Damage Cause
Property Damage Estimated Value	\$1 - \$5,000	Damage Final Value	
Drug Testing Completed	No	No Drug Testing Completed Explanation	Damage wasn't discovered/reported until next day

Unsafe Conditions, Hazards, or Exposures 

Description of unsafe conditions	Muddy conditions from previous days of rain/snow
Unsafe Conditions Include	Vehicles, Property Damage

Attachments 

Attachment

[Truck damage_3.jpg](#)
Immediate Corrective Actions Taken 

Immediate Corrective Action Taken	Team member was spoken to about reporting incidents and inspecting equipment. It's the team members last day so time off was not given.		
Taken By	Mortenson	Name	Langston, James
Date Completed	01/06/2021		

Links 

There are currently no Links for this event.

Witnesses 

There are currently no Witnesses for this event.

Preventive Actions Taken 

There are currently no Preventive Actions Taken for this event.

Impacts 

There are currently no Impacts for this event.

Subcontractor Task/Activity (Days)
Customer Project Schedule (Days)

Key Contributing Factors 

There are currently no Key Contributing Factors for this event.

[Return To Home/Search](#)

[➔ Document History](#)

Initial Report submitted by Sehmer, Dillon Alan on 1/6/2021 1:08:14 PM

Mortenson Proprietary



Safety and Quality Event Management

[Home/Search](#)

[Send Event Email](#)

[Edit](#)

Investigation Report

[Initial Investigation Closed](#)

Manage

- [Manage Attachments](#)
- [Manage Preventive Actions](#)
- [Manage Immediate Corrective Actions Taken](#)
- [Manage Impacts](#)
- [Manage Injured Persons](#)
- [Manage Key Contributing Factors](#)
- [Manage Links](#)
- [Unsafe Conditions, Hazards, and Exposures](#)
- [Manage Witness](#)

Project Details at Time of Incident [Edit](#)

Event Type	Incident	Event Number	EV2021232531
Event Subtype	Injury	Brief Description	A non work related motor vehicle accident occurred within project boundaries.
Diamond Event	No	Project Manager	Butz, Lucas
Project Number	19141024	Project Superintendent	Vick, Mark
Project Name	Kings Point Wind	Area/Assistant Superintendent	Burds, Zachary
Address Line 1	850 Base Line Road	Address City, State Postal Code	Golden City, MO 64748
Address Line 2			
General Foreman/Foreman	Reagan, Gregory		
Date Occurred (MM/DD/YYYY)	01/16/2021	Time Occurred (HH:MM)	06:30 AM
Event Reported By	Mortenson	Name	Butz, Lucas
Work Being Performed By	No Construction Related Work was in Progress	Name	[REDACTED]
		Company Info	
		Company Name	Mortenson
		Phone	
		Title	Pressure Washer
Location of Incident	Intersection of Base Line Blvd and CR 19		
Environmental Conditions at the time of the incident	Temperature below 32 deg. F, Ice/Snow/Sleet, Night/Dark		

Injured Persons [Edit](#)

Injured Person Detail for

Employed By	Mortenson	Name	[REDACTED]
Injury Severity	First Aid at Medical Facility		
Description of unsafe conditions			
Unsafe Conditions Include			
Treatment Status	Transported by ambulance		
Facility Type	Hospital	Facility Name	Mercy Hospital Carthage
Person Was Wearing	Seatbelt, PPE not required for this activity		
Person Was Wearing Other Description			
Description of Task	Driving into work	Division of Work	Subdivision of Work
Injuries			
Injury Type	Soreness/Tenderness	General Body Part	[REDACTED]
Treatment Date	1/16/2021 12:00:00 AM		
Activity	Not Applicable	Cause	Miscellaneous Causes – Other
Description Of Restrictions	No restrictions.		
Injury/Illness	Injury	Drug Testing Completed	No
		No Drug Testing Explanation	Non work related

Unsafe Conditions, Hazards, or Exposures [Edit](#)

Description of unsafe conditions Road was slick due to icy conditions.
Unsafe Conditions Include Ice or Snow

Attachments [Edit](#)

There are currently no Attachments for this event.

Immediate Corrective Actions Taken [Edit](#)

Immediate Corrective Action Taken Flagger were placed to help slow down vehicles approaching the incident site.
Taken By Mortenson **Name** Vick, Mark
Date Completed 01/16/2021

Links [Edit](#) 

There are currently no Links for this event.

Witnesses [Edit](#) 

First Name	Last Name	Employed By	Company Name	Title	Phone
Lucas	Butz	Mortenson		Salaried.Assistant Project Manager.	

Preventive Actions Taken [Edit](#) 

Preventive Action Taken Stretch and Bend Discussions on slick driving conditions and ice buildup on the roads.
Taken By Mortenson **Name** Greenwell, Mason
Date Due 01/16/2021 **Date Completed** 01/16/2021

Impacts [Edit](#) 

Mortenson Total Labor (Hours) Less than 4 hours
Mortenson Material Cost (Dollars) No Cost Impact
Mortenson Impact to a Task/Activity No Impact to Schedule
Subcontractor Labor (Hours)
Subcontractor Material Cost (Dollars)
Subcontractor Task/Activity (Days)
Customer Cost (Dollars) No Cost Impact
Customer Project Schedule (Days) Less than 1/2 day
Customer Relations Impact Minor Impact (Customer has concerns, but no consequences are expected.)
Other Impacts

Key Contributing Factors [Edit](#) 

Event was related to unplanned work or rework: No
Worker(s) has appropriate qualification/certification: Yes
Appropriate permits in place at the time of the event: Yes
Hours Completed day of incident: 0 **Hours Completed week of incident:**
Process Contributing Factors: Best Practice
Design Engineering Deficiency Factors:
Material Deficiency Factors:
Other External Factors:
Additional Information:


Equipment/Tools In Use

There are currently no Equipment/Tools for this event.

Materials In Use

There are currently no Materials for this event.

[Return To Home/Search](#) [Submit Investigation](#)

 [Document History](#) Initial Report submitted by Greenwell, Mason Mills on 1/16/2021 3:24:12 PM



Safety and Quality Event Management

[Home/Search](#)

[Send Event Email](#)

[Edit](#)

Investigation Report

[Initial](#) [Investigation](#) [Closed](#)

Manage

- [Manage Attachments](#)
- [Manage Preventive Actions](#)
- [Manage Immediate Corrective Actions Taken](#)
- [Manage Impacts](#)
- [Manage Injured Persons](#)
- [Manage Key Contributing Factors](#)
- [Manage Links](#)
- [Unsafe Conditions, Hazards, and Exposures](#)
- [Manage Witness](#)

Project Details at Time of Incident

[Edit](#)

Event Type	Incident	Event Number	EV2021232612
Event Subtype	Injury	Brief Description	HL 1 While cleaning a grout mixer, team member got his finger caught in moving parts. Investigation ongoing.
Diamond Event	No	Project Manager	Butz, Lucas
Project Number	19141024	Project Superintendent	Vick, Mark
Project Name	Kings Point Wind	Area/Assistant Superintendent	Reagan, Gregory
Address Line 1	850 Base Line Road	Address City, State Postal Code	Golden City, MO 64748
Address Line 2			
General Foreman/Foreman	Johnson, Woodrow		
Date Occurred (MM/DD/YYYY)	01/21/2021	Time Occurred (HH:MM)	01:30 PM
Event Reported By	Mortenson	Name	Johnson, Woodrow
Work Being Performed By	Mortenson	Name	[REDACTED]
Location of Incident	Turbine Site 8		
Environmental Conditions at the time of the incident			
Temperature 33 - 85 deg. F., Clear Sky, Calm/Little or No Wind			

Injured Persons

[Edit](#)

Injured Person Detail for

Employed By	Mortenson	Name	[REDACTED]
Injury Severity	Medical Only		
Description of unsafe conditions			
Unsafe Conditions Include			
Treatment Status	Taken for treatment		
Facility Type	Occupational Medicine Clinic	Facility Name	Freeman OccuMed
Person Was Wearing	Hardhat, Hi-Vis Vest, Safety Glasses, Gloves		
Person Was Wearing Other Description			
Description of Task	Grout crew just finished grout at T-8 and preparing to move to the next tower.	Division of Work	91 - Wind Uni-Format
		Subdivision of Work	91B13 - Grout & Tension Base
Injuries			
Injury Type	Cut/Scrape/Laceration	General Body Part	Arm/Hand
Treatment Date	1/21/2021 12:00:00 AM	Specific Body Part	[REDACTED]
Activity	Caught In or Between a Pinch point	Cause	Caught in or between – Machine or Machinery
Description Of Restrictions	No Restrictions	Other Injury (Not Listed)	
Injury/Illness	Injury	Drug Testing Completed	Yes

Unsafe Conditions, Hazards, or Exposures

[Edit](#)

Description of unsafe conditions After completion of the first grout pour of the day, Team member was cleaning out the chute of the grout mixer while the paddles were in motion, causing a laceration with minor fracture to fingertip.

Unsafe Conditions Include Unsafe Act

Attachments

[Edit](#)

Attachment
2021.01.21 Grout PTC Back.pdf
2021.01.21 Grout PTC Front.pdf
2021.01.22 Grout SWI Review Sign In Sheet.pdf
Danger Sign.pdf
Statement - Jordan.pdf

[Statement - Keil.pdf](#)
[Statement - Woody.pdf](#)

Immediate Corrective Actions Taken [Edit](#) 

Immediate Corrective Action Taken All stop was called for the grout crew. All grout activity to stop until a root cause is determined.
Taken By Mortenson **Name** Ellis, John
Date Completed 01/21/2021

Links [Edit](#) 

There are currently no Links for this event.

Witnesses [Edit](#) 

There are currently no Witnesses for this event.

Preventive Actions Taken [Edit](#) 

Preventive Action Taken SWI review was conducted with all team members on the grout crew.
Taken By Mortenson **Name** Butz, Lucas
Date Due 01/22/2021 **Date Completed** 01/22/2021

Preventive Action Taken Revision of the Grout SWI was made and waiting on approval.
Taken By Mortenson **Name** Butz, Lucas
Date Due 01/22/2021 **Date Completed** 01/22/2021

Preventive Action Taken Extra signage was placed on the mixer stating to verify that the mixer is unplugged and the generator is off prior to cleaning the grout mixer chute.
Taken By Mortenson **Name** Butz, Lucas
Date Due 01/22/2021 **Date Completed** 01/22/2021

Impacts [Edit](#) 

Mortenson Total Labor (Hours) Less than 4 hours
Mortenson Material Cost (Dollars) \$1 - \$5,000
Mortenson Impact to a Task/Activity Less than 1/2 day
Subcontractor Labor (Hours)
Subcontractor Material Cost (Dollars)
Subcontractor Task/Activity (Days)
Customer Cost (Dollars) \$1 - \$5,000
Customer Project Schedule (Days) Less than 1/2 day
Customer Relations Impact Minor Impact (Customer has concerns, but no consequences are expected.)
Other Impacts

Key Contributing Factors [Edit](#) 

Event was related to unplanned work or rework: No
Worker(s) has appropriate qualification/certification: Yes
Appropriate permits in place at the time of the event: Yes
Hours Completed day of incident: 5 **Hours Completed week of incident:**
Process Contributing Factors: Best Practice
Design Engineering Deficiency Factors:
Material Deficiency Factors:
Other External Factors:
Additional Information:

Equipment/Tools In Use

There are currently no Equipment/Tools for this event.

Materials In Use

There are currently no Materials for this event.

[Return To Home/Search](#) [Submit Investigation](#)

 [Document History](#)

Investigation saved by Greenwell, Mason Mills on 1/22/2021 1:31:59 PM



Safety and Quality Event Management

[Home/Search](#)[Send Event Email](#)

Investigation Report

Initial Investigation Closed

Project Details at Time of Incident 

Event Type	Incident	Event Number	EV2021232779
Event Subtype	Property Damage	Brief Description	A team member was hauling a trailer on site when a small bolt sticking out struck and cracked the rear break lens of another truck
Diamond Event	No	Project Manager	Butz, Lucas Arthur
Project Number	19141024	Project Superintendent	Vick, Mark
Project Name	Kings Point Wind	Area/Assistant Superintendent	
Address Line 1	850 Base Line Road	Address City, State Postal Code	Golden City, MO 64748
Address Line 2			
General Foreman/Foreman			
Date Occurred (MM/DD/YYYY)	01/29/2021	Time Occurred (HH:MM)	12:00 PM
Event Reported By	Supplier	Name	Apple, Mike
		Company Info	
		Company Name	Vestas
		Phone	
		Title	
Work Being Performed By	Mortenson	Name	Quince, Tommy
Location of Incident	T-56		
Environmental Conditions at the time of the Incident			
	Temperature 33 - 85 deg. F., Clear Sky, Other		
Other Description	Muddy		

Property Damage 

Property Damage Type	Vehicle	PropertyDamageSubType	
Ownership Type	Rented/Leased	OwningLeasingParty	Subcontractor/Other
Company Name	Vestas	Telephone Number	
Damage Description	Rear taillight lens is cracked	Damage Cause	Other
Property Damage Estimated Value	\$1 - \$5,000	Damage Final Value	
Drug Testing Completed	Yes		

Unsafe Conditions, Hazards, or Exposures 

Description of unsafe conditions	The team member was hauling a trailer down the access road of T-56, when he came across a Vestas truck that was parked partially on the access road. The team member began trying to pass the parked vehicle, however the road was tight and conditions on the sides of the road were very muddy. A small bolt was sticking out of the side of the trailer that was previously used to hold the spare tire, and struck the parked truck's tail light causing a crack to the lens.
Unsafe Conditions Include	Property Damage

Attachments 

Attachment
Vestas Truck 3.png

Immediate Corrective Actions Taken 

Immediate Corrective Action Taken	Team member was drug tested and talked to about making better choices in terms taking a route where the conditions are poor for driving a trailer		
Taken By	Mortenson	Name	Langston, James
Date Completed	01/29/2021		

Links 

There are currently no Links for this event.

Witnesses 

There are currently no Witnesses for this event.

Preventive Actions Taken 

There are currently no Preventive Actions Taken for this event.

Impacts 

There are currently no Impacts for this event.

Subcontractor Task/Activity (Days)
Customer Project Schedule (Days)

Key Contributing Factors

There are currently no Key Contributing Factors for this event.

[Return To Home/Search](#)

[Document History](#)

Initial Report submitted by Sehmer, Dillon Alan on 1/29/2021 2:11:43 PM

Mortenson Proprietary

Exhibit I – Environmental Reports



Safety and Quality Event Management

[Home/Search](#)

[Send Event Email](#)

Investigation Report

Initial Investigation Closed

Project Details at Time of Incident

Event Type	Incident	Event Number	EV2021232351
Event Subtype	Environmental Issue	Brief Description	Spill of biodegradable windshield washer fluid and water mix in laydown yard.
Diamond Event	No	Project Manager	Butz, Lucas
Project Number	19141024	Project Superintendent	Vick, Mark
Project Name	Kings Point Wind	Area/Assistant Superintendent	
Address Line 1	850 Base Line Road	Address City, State Postal Code	Golden City, MO 64748
Address Line 2			
General Foreman/Foreman			
Date Occurred (MM/DD/YYYY)	01/08/2021	Time Occurred (HH:MM)	04:00 AM
Event Reported By	Mortenson	Name	Hinkie, Jerry
Work Being Performed By	No Construction Related Work was in Progress	Name	
		Company Info	
		Company Name	Mortenson
		Phone	
		Title	
Location of Incident	Laydown Yard		
Environmental Conditions at the time of the Incident	Temperature 33 - 85 deg. F.		

Environmental Issues

Categories

Category	SubCategory
Other	Other

Description	Windshield washer fluid and water mix spill in laydown yard.		
Emergency Response Provider Contacted	No		
Corrective Action Taken	No external response necessary. Biodegradable/watery spill.		
Date Occurred (MM/DD/YYYY)	01/08/2021	Time Occurred (HH:MM)	04:00 AM
Regulatory Agency Notified	No		
Regulatory Notice of Violation, Citation, Work Order, Fine	No		
Who/What Affected	Soil		
Material Released	Biodegradable windshield washer fluid and water mi		
Quantity of gas, liquid, or solid?	1	Measurement Units	Gallons
Issue Attributed To	Mortenson		

Attachments

There are currently no Attachments for this event.

Immediate Corrective Actions Taken

There are currently no Immediate Corrective Actions Taken for this event.

Links

There are currently no Links for this event.

Witnesses

There are currently no Witnesses for this event.

Preventive Actions Taken

There are currently no Preventive Actions Taken for this event.

Impacts

There are currently no Impacts for this event.

Subcontractor Task/Activity (Days)
Customer Project Schedule (Days)

Key Contributing Factors

There are currently no Key Contributing Factors for this event.

[Return To Home/Search](#)

[➔ Document History](#)

Initial Report submitted by Osterman, Jacob (Jake) on 1/9/2021 9:31:17 AM

Mortenson Proprietary



Safety and Quality Event Management

[Home/Search](#)

[Send Event Email](#)

[Edit](#)

Investigation Report

[Initial](#) [Investigation](#) [Closed](#)

Manage

- [Manage Attachments](#)
- [Manage Preventive Actions](#)
- [Manage Immediate Corrective Actions Taken](#)
- [Manage Impacts](#)
- [Manage Key Contributing Factors](#)
- [Manage Links](#)
- [Unsafe Conditions, Hazards, and Exposures](#)
- [Manage Witness](#)

Project Details at Time of Incident

[Edit](#)

Event Type	Incident	Event Number	EV2021232562
Event Subtype	Environmental Issue	Brief Description	A loose fitting on the MLC 650 started leaking hydraulic fluid which contacted the crane pad.
Diamond Event	No	Project Manager	Butz, Lucas
Project Number	19141024	Project Superintendent	Ellis, John
Project Name	Kings Point Wind	Area/Assistant Superintendent	Reagan, Gregory
Address Line 1	850 Base Line Road	Address City, State Postal Code	Golden City, MO 64748
Address Line 2			
General Foreman/Foreman	Cook, Jason		
Date Occurred (MM/DD/YYYY)	01/20/2021	Time Occurred (HH:MM)	10:00 AM
Event Reported By	Mortenson	Name	Cook, Jason
Work Being Performed By	Mortenson	Name	Cook, Jason
Location of Incident	Turbine Site 90		
Environmental Conditions at the time of the Incident	Temperature 33 - 85 deg. F., Overcast, Windy		

Environmental Issues

[Edit](#)

Categories

Category	SubCategory
Spills	None

Description	Hydraulic leak caused soil on the crane pad to be contaminated.		
Emergency Response Provider Contacted	No		
Corrective Action Taken	Absorbent pads were placed to help mitigate further contamination.		
Date Occurred (MM/DD/YYYY)	01/20/2021	Time Occurred (HH:MM)	12:00 PM
Regulatory Agency Notified	No		
Regulatory Notice of Violation, Citation, Work Order, Fine	No		
Who/What Affected	Soil		
Material Released	Hydraulic Fluid		
Quantity of gas, liquid, or solid?	3	Measurement Units	Gallons
Issue Attributed To	Mortenson		

Attachments

[Edit](#)

Attachment

[Hydraulic Leak.jpg](#)

Immediate Corrective Actions Taken

[Edit](#)

Immediate Corrective Action Taken	Absorbent pads were placed to help mitigate further contamination.		
Taken By	Mortenson	Name	Greenwell, Mason
Date Completed	01/20/2021		

Links

[Edit](#)

There are currently no Links for this event.

Witnesses

[Edit](#)

There are currently no Witnesses for this event.

Preventive Actions Taken

[Edit](#)

There are currently no Preventive Actions Taken for this event.

Impacts	Edit 
---------	------------------------------------------------------------------------------------------

There are currently no Impacts for this event.

Subcontractor Task/Activity (Days)
Customer Project Schedule (Days)

Key Contributing Factors	Edit 
--------------------------	------------------------------------------------------------------------------------------

There are currently no Key Contributing Factors for this event.

Return To Home/Search	Submit Investigation
---------------------------------------	--------------------------------------

 [Document History](#)

Initial Report submitted by Greenwell, Mason Mills on 1/20/2021 5:28:45 PM

Mortenson Proprietary

Exhibit J – Owner Goals

Kings Point - Owner Goals

Goal	Measurement	% Weight	Notes	Primary
Safety - Zero Lost Time Injuries & Zero Recordables	0 Lost Time & 0 Recordables (Yes/No)	10%	Project Team Member Involvement/Engage Craft	Superintendents/PM
Safety Reporting - All Safety incidents will be reported within 24 hours	Date and time of incident VS date and time of reporting.	5%	Immediate Verbal Notification with incident report to follow within 24 hours	Safety Engineer/PM
Traffic - no complaints from local community regarding excessive speed or hazardous driving and no incidents involving improper use of defined traffic plans.	No complaints or incidents	5%	Continue communication with crews throughout all phases. Inspect concrete routes weekly, at a minimum.	Superintendents/PM
Quality - The last 19 WTG's have a smaller average punchlist number than the first 50. Quality should always improve vs. taper.	Average # punchlist in last 19 walkdowns compared to average number of punchlist items in first 50.	5%	Get ahead of the details prior to erection beginning so we're not reactively playing catch up while the crews are moving	Superintendents
Quality - <3% of job books or certificates (MCC, etc.) returned based on lack of completeness, quality, lack of internal Mortenson review, etc.	# job books or certs returned for resubmission / total #	5%	Establish Golden Book to be bought off by MAM/Solas/Vestas	Project Engineers
Quality - <2 Turbine walkdowns cancelled upon arrival to tower based on readiness.	Number of turbine walkdowns cancelled when teams are in route (or at) turbine.	5%	Maintain proper communication so this doesn't happen	Project & Field Engineers
Quality - No single and preventable "rework" issue costs more than 2 days of schedule, or impacts a contractual milestone date.	No single quality issue impacts schedule more than 2 days, or impacts any milestone.	5%		Superintendents/PEs/PM
Cost - Do not exceed approved budget (after CO1) value by 1% contingency (excluding force majeure event) and zero instances of proceed with extra work without obtaining Owner's prior approval.	Final accounting	5%	Cost conscious, keeping Cost Log updated and having open lines of communication	PM/General Superintendent
Cost - At the time that the final circuit is energized, there shall be no "lingering" open cost or schedule issues w/ Vestas. Deal w/ any issues as they come up. No back-forth post-project - no excuses.	No Vestas open issues that are not agreed to upon energization of final circuit.	5%	Monthly reconciliations	PM/General Superintendent/Solas
Schedule - All contractual milestones date met (or early)	Actual dates vs. contractual dates	10%	Weekly Schedule Reviews	Superintendents/PM
Energization: Zero delays on process for planned energization. Substation is complete and ready for energization before October 8, 2020, and no preventable issues result in that date slipping (i.e. SCADA, substation commissioning, end-end testing, studies, etc.).	Planned energization date vs. actual energization date, and any reason for delay.	10%		Superintendents/ Project Engineers
Permit Compliance: No permit compliance issues, including timely notifications of start and completion of work.	Permit violations and notification dates of start and completion.	10%	Maintain Crossing Matrix and Appropriate Notifications	Superintendents/ Project Engineers
Housekeeping - site shall be organized, free of loose debris, and all equipment secure prior to weekends, holidays, and at project completion. At no time shall construction debris migrate beyond project boundaries.	No excessive debris, no debris migrating beyond project boundaries, implementation of a weekly site-wide cleanup effort	5%	Dedicated Weekly Effort	Superintendents
Client Relations - Poll Julian, Scott, Matt. Ask them "would you take this same team to the next project"?	100% response of yes	5%		PM/General Superintendent
Landowner Relations - No unplanned or unnecessary destruction of leased or neighboring property (livestock, crops, utilities, etc.)	No preventable destruction of property.	5%		PM/General Superintendent
County Relations - Poll County officials. Ask them "would you recommend this same team for another project"?	100% response of yes	5%	Ideas: Roadside information stop on Wind Farm.	PM/General Superintendent

Attachment 2
Turbine Supplier Monthly Report

See attached



ESO Progress Report Kings Point

January 1 – January 31, 2021

Customer:	Algonquin		
Project Name:	Kings Point	Project Manager:	Ben Blainedavis
Turbines:	(12) V110 Mk10C 2.0MW, 5-sec towers (57) V120 Mk11D 2.3MW, 5-sec towers	Senior PM : Construction Manager : Installation Lead :	Ryan Fertig Matthew Jones
Contract Type:	TSA	HSE Specialist:	Michael Apple
Project Location:	Missouri		
Report Date	February 5th, 2021		

1. Executive Summary

All main component production is 100% complete. Deliveries to site completed during week 51. The M-2 which was returned for factory repair, was delivered to site on 1/29/21. Turbine installation continues currently at 77% completion. Pre-commissioning activities have been suspended as circuit energization is ahead of commissioning. Commissioning resources have returned to Kings Point after Dec. reallocated to the North Fork Project. 14 WTG have been commissioned and weekly rate continues to increase.

2. Safety

Summary:

0 Incidents. 7 Hazardous Observations. 1 Environmental. 7 Safety Walks.

Absolute indicators	This Month	Accumulated
# of LTIs	0	0
# of environmental incidents	1	1
# of near misses/incidents	0	0
# of workhours*	2,547	13,715

ESO Progress Report Kings Point

Safety Incident Details:

Incident Description:	Week 2 Environmental Incident
Incident Description:	On the evening of 1-12-21 Vestas techs found generator leaking oil at T 35.
Root Cause:	Rental equipment failure
Mitigation Plan:	Techs reported the leak, then contained and began cleanup of the leak. All contaminated soil removed.
Incident Description:	Week 4 Property Damage
Incident Description:	1-29-21: BOP vehicle and trailer got too close while driving past Vestas truck at WT 56 and struck the back taillight creating a dent as well.
Root Cause:	Driver not being aware of how close he was while driving past with his trailer, Driver not utilizing spotter or asking for vehicle removal first.
Mitigation Plan:	Notified BOP of incident and mentioned in safety meeting to back into spots, continue to park along same side of road giving passing space.
Hazardous Observations:	
1/7/21 Laydown Yard	Blue Liquid noticed in laydown yard and reported
1/11/21 Local Road	Road barricade tipped over and broken in the street, removed and reported
1/12/21 Laydown Office Area	Truck pulled in forward
1/16/21 T-031	Connecting flap for Blade B blade collar coming off, noted for repair
1/16/21 T-015	Blade C Blade Collar missing, noted for repair
1/19/21 T-059	CIM crew using step ladder leaning instead of open, corrected
1/28/21 T-046	Crew not backing trucks in to pad location, corrected
1/29/21 T-056	BOP truck and trailer caught taillight of Vestas truck, also covered in Week 4 Property damage

ESO Progress Report Kings Point

3. Scope

Turbine Component Production:

				01.2017	12.2020	13.2020	14.2020	15.2020	16.2020	17.2020	18.2020	19.2020	21.2020	25.2020	27.2020	29.2020
				Req. Qty	Req. Qty	Req. Qty	Req. Qty	Req. Qty	Req. Qty	Req. Qty	Req. Qty	Req. Qty	Req. Qty	Req. Qty	Req. Qty	Req. Qty
Project Definition	Vendor	Material		EA	EA	EA	EA	EA	EA	EA	EA	EA	EA	EA	EA	EA
SP-52012	Steelhead/Tenaska - Kings Point	Vestas Blades Windsor (CM) BLA 54m								36						
SP-52012	Steelhead/Tenaska - Kings Point	Vestas Blades Windsor (CM) BLA V120 HY				27	27	27	27	27	27	9				
SP-52012	Steelhead/Tenaska - Kings Point	Vestas Towers SUBC Malaysia V110 Towers				7				5						
SP-52012	Steelhead/Tenaska - Kings Point	Vestas Towers SUBC Malaysia V120 Towers			5							5			5	28
SP-52012	Steelhead/Tenaska - Kings Point	Vestas Towers SUBC Panchn V120 Towers												14		
SP-52012	Steelhead/Tenaska - Kings Point	Vestas Nacelles Brighton (CM) HUB V100/V110 2.0/2.2 MW ASME		12												
SP-52012	Steelhead/Tenaska - Kings Point	Vestas Nacelles Brighton (CM) NAC V100/110 2.0MW 60HZ		12												
SP-52012	Steelhead/Tenaska - Kings Point	Vestas Nacelles Brighton (CM) NAC 2.2MW 60Hz VCS 135m										23	34			
SP-52012	Steelhead/Tenaska - Kings Point	Vestas Nacelles Brighton (CM) HUB V116/V120 2.2 FRL ASME HCB										23	34			

Production Completion:

- Towers @ 100% complete
- Nacelles/hubs/drivetrains @ 100% complete
- Blade production @ 100% complete

Vessel Plan:

All shipping is 100% complete for the Kings Point Project

Lot Nr.	Project no.	Project Name	Turbine Type	Vessel Name	Supplier	Status	Laycan week	POL	POD	ETA POD	B	M1	M2	M3	M4	M5	T
20/566-1	SP-52012	Kings Point	V120	Star Lygra	G2	Completed 2020	10	Kuantan, MA	Beaumont, TX	wk18	10	10	10	10			10
20/563-2	SP-52012	Kings Point	V110	Star Louisiana	G2	Completed 2020	12	Kuantan, MA	Beaumont, TX	8-May	7	7	7	7			7
20/567-1	SP-52012	Kings Point	V120	Star Lysefjord	G2	Completed 2020	14	Kuantan, MA	Beaumont, TX	13-May	10	10	10	10			10
20/664-1	SP-52012	Kings Point	V120	Star Luster	G2	Completed 2020	27	Kuantan, MA	Beaumont, TX	21-Aug	5	5	5	5			5
20/664-2	SP-52012	Kings Point	V110	Star Luster	G2	Completed 2020	27	Kuantan, MA	Beaumont, TX	21-Aug	5	5	5	5			5
20/568-1	SP-52012	Kings Point	V120	Star Lysefjord	G2	Completed 2020	32	Kuantan, MA	Beaumont, TX	18-Oct	18	18	18	18			18
20/553-1	SP-52012	Kings Point	V120	CL Heidi	DSV	Completed 2020	36	Kandla, IN berth 13 thru 16	Beaumont, TX	4-Nov	14	14	14	14			14

ESO Progress Report Kings Point

Railhead Inventory & Trucking:

Updates since last report:

- 100% of deliveries completed in week 51 (M-2 which was returned to the factory for repair, redelivered week 4)

COMPONENT IN (SETS)	Week 15	Week 16	Week 17	Week 18	Week 19	Week 20	Week 21	Week 22	Week 23	Week 24	Week 25	Week 26	Week 27	Week 28	Week 29	Week 30	Week 31	Week 32	Week 33	Week 34	Week 35	Week 36	Week 37	Week 38	Week 39	Week 40	Week 41	Week 42	Week 43	Week 44	Week 45	Week 46	Week 47	Week 48	Week 49	Week 50	Week 51	Total		
V110 Blades				1	3	4	2	2																																12
V110 Nacelles									12																															12
V110 Hubs									12																															12
V110 Tower																									12														12	
V120 Blades								12											9	5	4	5	4				9			9									57	
V120 Nacelles									23								34																						57	
V120 Hubs									23								34																						57	
V120 Tower																										2		14		9				14	4	14			57	

CURRENT DELIVERY PLAN	Week 15	Week 16	Week 17	Week 18	Week 19	Week 20	Week 21	Week 22	Week 23	Week 24	Week 25	Week 26	Week 27	Week 28	Week 29	Week 30	Week 31	Week 32	Week 33	Week 34	Week 35	Week 36	Week 37	Week 38	Week 39	Week 40	Week 41	Week 42	Week 43	Week 44	Week 45	Week 46	Week 47	Week 48	Week 49	Week 50	Week 51	Total		
**EXHIBIT B SCHEDULE																																								
V110 Blades																		10	2																				12	
V110 Nacelles																		10	2																				12	
V110 Hubs																		10	2																				12	
V110 Tower																									7	5													12	
V120 Blades																			8	10	9	3	6	3					1	10	6	1						57		
V120 Nacelles																			6	10	10	10	8	10	3													57		
V120 Hubs																			8	10	10	10	8	10	1													57		
V120 Tower																										1	1	8	6	2		7	4	6		6	7	9	57	

Site Progress Updates (As of January 31st):

Deliveries			Install			Commissioning / HOTS			
	#	%		#	%		#	%	
Base	69	100%	Install SWG	69	100%	MCC Walkdowns Complete	46	67%	
Lower Mid 1 (Section 2)	69	100%	Installation Hub	69	100%	Full MCCs Accepted by Vestas	40	58%	
Middle Mid 2 (Section 3)	68	99%	Nacelle Build / Prep / Cooler Top Install	69	100%	Arc Flash complete	34	49%	
Upper Mid 3 (Section 4)	69	100%	Installation Base	69	100%	Pre-commissioning complete	4	6%	
Top	69	100%	Installation Lower Mid 1	69	100%	Freewheeling (Pre-commissioning)	16	23%	
Nacelle Deliveries	69	100%	Installation Middle Mid 2	53	77%				
Hub Deliveries	69	100%	Installation Upper Mid 3	53	77%				
			Installation Top	53	77%				
Blade Deliveries	69	207	100%	Installation Nacelle	53	77%	V120 - Accumulator CIM (57 Total)	35	61%
				Installation Blades	53	77%			
				Cable Work	44	64%	Commissioning complete	14	20%
				Gen Alignment	41	59%	Leak Check	10	14%
				Install Service Lift	43	62%	Run Test complete	9	13%
							Handover to Service	3	4%
Total Deliveries (690 Total)	689	100%	Install Project Total	82%					

ESO Progress Report Kings Point

Documentation/Quality:

- No issues with receiving documentation
- PCT serial number discrepancy between delivery and PTC and maintenance records reported by Buyer, Vestas received updated serial number confirmations from Buyer/Steelhead. Maintenance records have been provided to Buyer. Three records missing last inspection, updated docs sent week 5.

Damages/Parts/Tools Issues:

- Mortenson has completed correction of backwards Ladder support brackets. Details expected in Week 5.
- Yellow doors repaint in process. NCR submitted, and will be added to punch-lists.
- T-44 Hub repair (no formal CIR). Matt Jones provided repair form.
- Damaged M2 section returned to site week 4. Ben Blainedavis will provide Factory repair documentation.
- Stair treads damaged due to falling ice, Mortenson requested replacement parts for Vestas order.
- Damage due to blade socks falling.
- T-29 repair was completed just before the Holiday, repair report to be provided.

Scope changes adjustment/ Issues: *HC*Highly Confidential in its Entirety*HC*

[REDACTED]	[REDACTED]	[REDACTED]	[REDACTED]
[REDACTED]	[REDACTED]	[REDACTED]	[REDACTED]
[REDACTED]	[REDACTED]	[REDACTED]	[REDACTED]
[REDACTED]	[REDACTED]	[REDACTED]	[REDACTED]
[REDACTED]	[REDACTED]	[REDACTED]	[REDACTED]
[REDACTED]	[REDACTED]	[REDACTED]	[REDACTED]
[REDACTED]	[REDACTED]	[REDACTED]	[REDACTED]
[REDACTED]	[REDACTED]	[REDACTED]	[REDACTED]
[REDACTED]	[REDACTED]	[REDACTED]	[REDACTED]

Previous CO#4 Vestas Demurrage Claim and Notice of Supplier Non-Conformance sent November 6, 2020 for BOP reloading of V120 tower at T62 dismissed out as part of larger settlement.

ESO Progress Report Kings Point

4. Schedule

- Vestas commissioning projections will be updated based on partial circuit energization plan
- Vestas commissioning daily rates have ramped up faster than MCC rates as expected, pushing to increase further

5. Invoice Schedule *HC*Highly Confidential in its Entirety*HC*

[REDACTED]	[REDACTED]	[REDACTED]	[REDACTED]	[REDACTED]	[REDACTED]	[REDACTED]	[REDACTED]	[REDACTED]	[REDACTED]
[REDACTED]	[REDACTED]	[REDACTED]	[REDACTED]	[REDACTED]	[REDACTED]	[REDACTED]	[REDACTED]	[REDACTED]	[REDACTED]
[REDACTED]	[REDACTED]	[REDACTED]	[REDACTED]	[REDACTED]	[REDACTED]	[REDACTED]	[REDACTED]	[REDACTED]	[REDACTED]
[REDACTED]	[REDACTED]	[REDACTED]	[REDACTED]	[REDACTED]	[REDACTED]	[REDACTED]	[REDACTED]	[REDACTED]	[REDACTED]

6. Risks

ESO Progress Report Kings Point

Coronavirus Impacts to Kings Point continues. Areas of concern include but are not limited to:

- Site personnel limitations based on individual site and portfolio wide health and quarantine impacts
- Delays in MCC turbine turnover to Vestas for Commissioning in 2020
- Commissioning catch up in January due to controller and software start up issues, actively being mitigated with tech services
- Weather, site conditions and icing events have slowed commissioning activities