

Start Calculation

Definitions

SPP\$ = Southwest Power Pool revenues for the Wind Projects

WRR = Wind Revenue Requirement = operation and maintenance, labor, tax equity payments / (credits), property taxes, return on and of, income taxes

PPA_Replacement = value associated with replacing the existing wind PPAs during the period of the guarantee, as shown on Exhibit C.

AWV = Annual Wind Value (row 16 of excel)

UDB = Upper Dead Band = \$2,000,000

LDB = Lower Dead Band = -\$2,000,000

AWV_Net = Annual Wind Value outside of dead band (row 25 excel)

Sharing Percentage = 50% (cell B9)

ASV = Annual Sharing Value = AWV_Net * Sharing Percentage (row 27 excel)

ASV_Sum = sum of all prior years ASV inclusive of current year (row 29 excel)

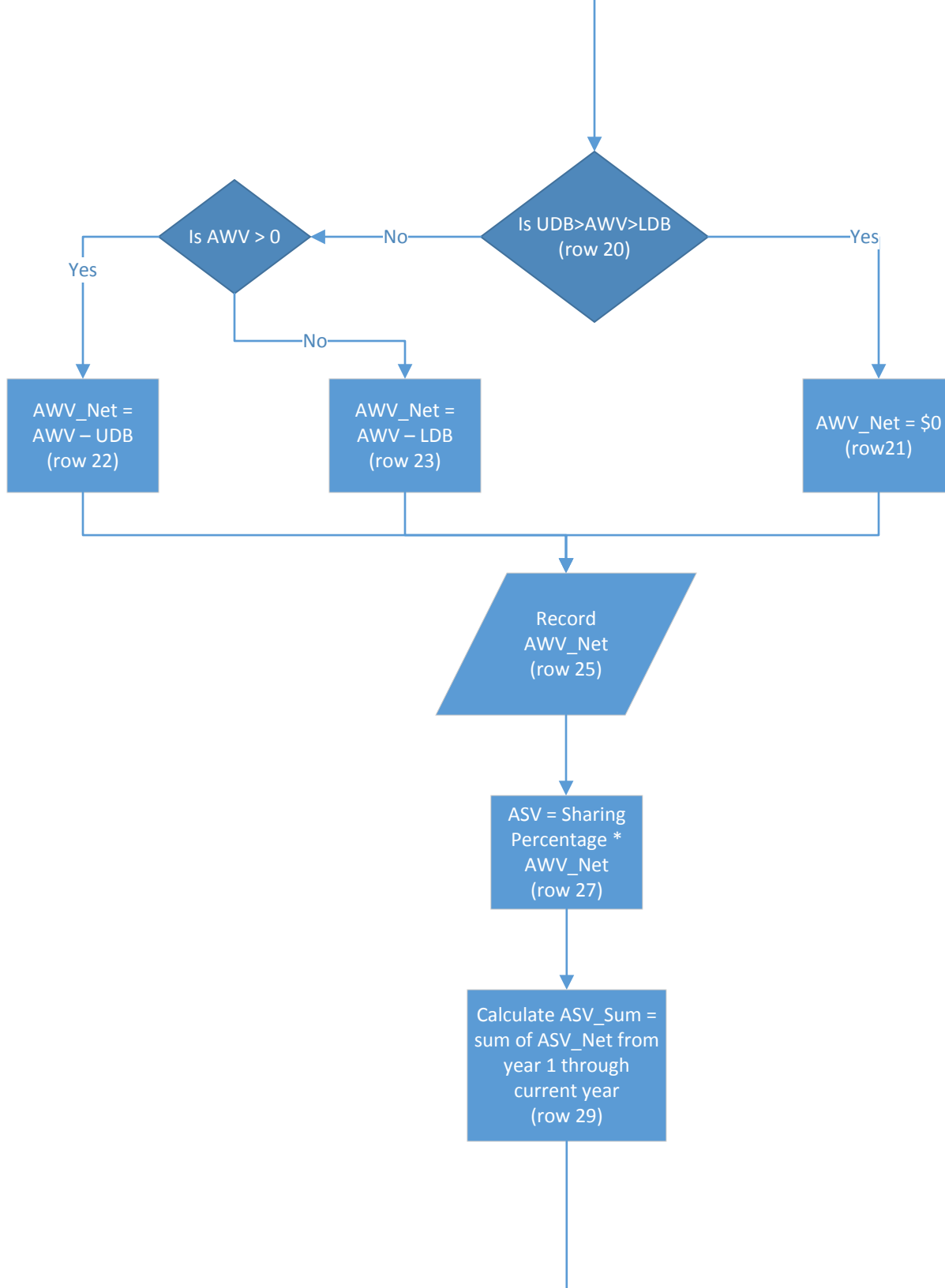
Reg_Input pre-limit = the calculated Reg_Input before the upper limit is placed on it to prevent an overpayment to the Company (row 41 excel)

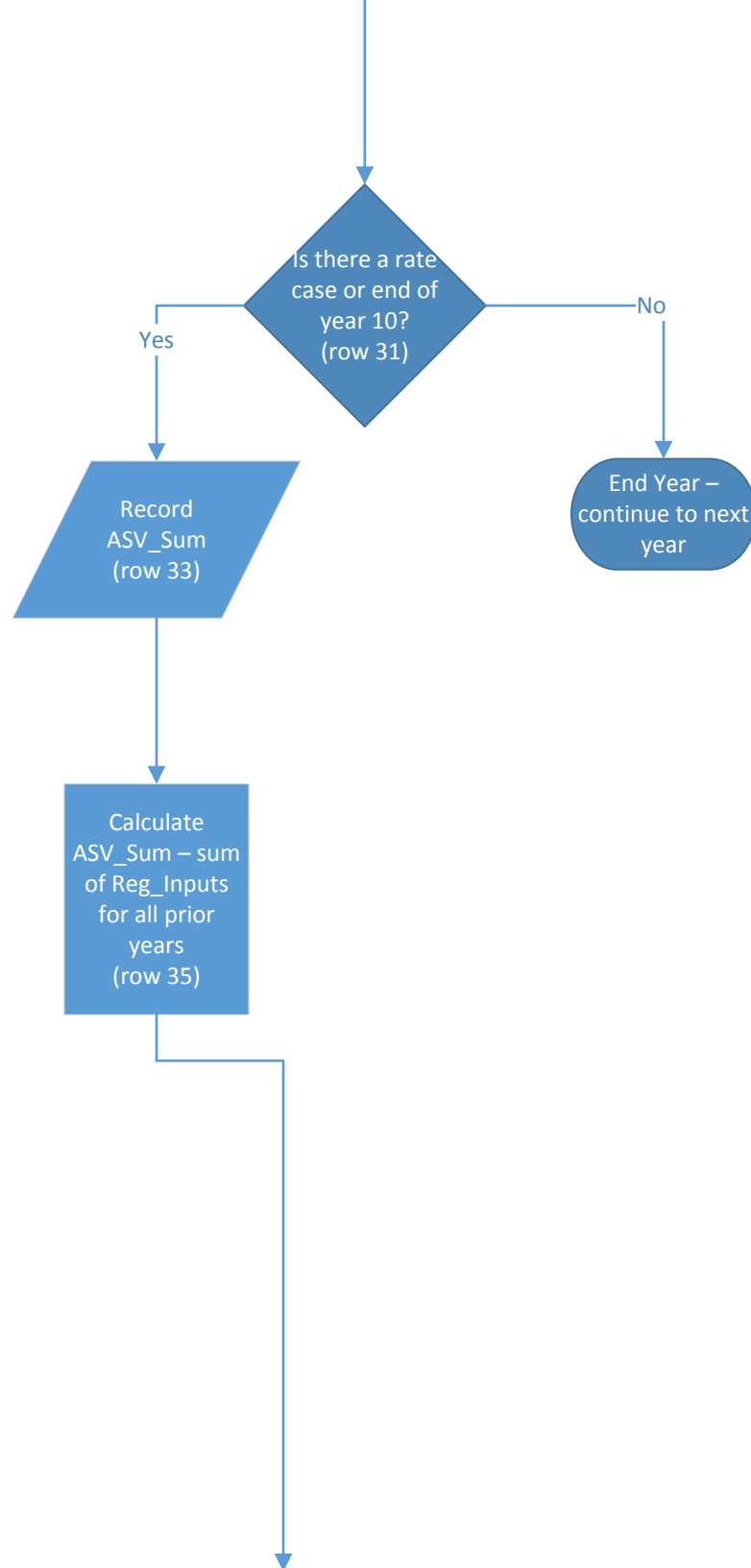
Reg_Inputs = amount added to a regulatory liability (negative number) or the amount added to a regulatory asset (positive number) (row 46 excel)

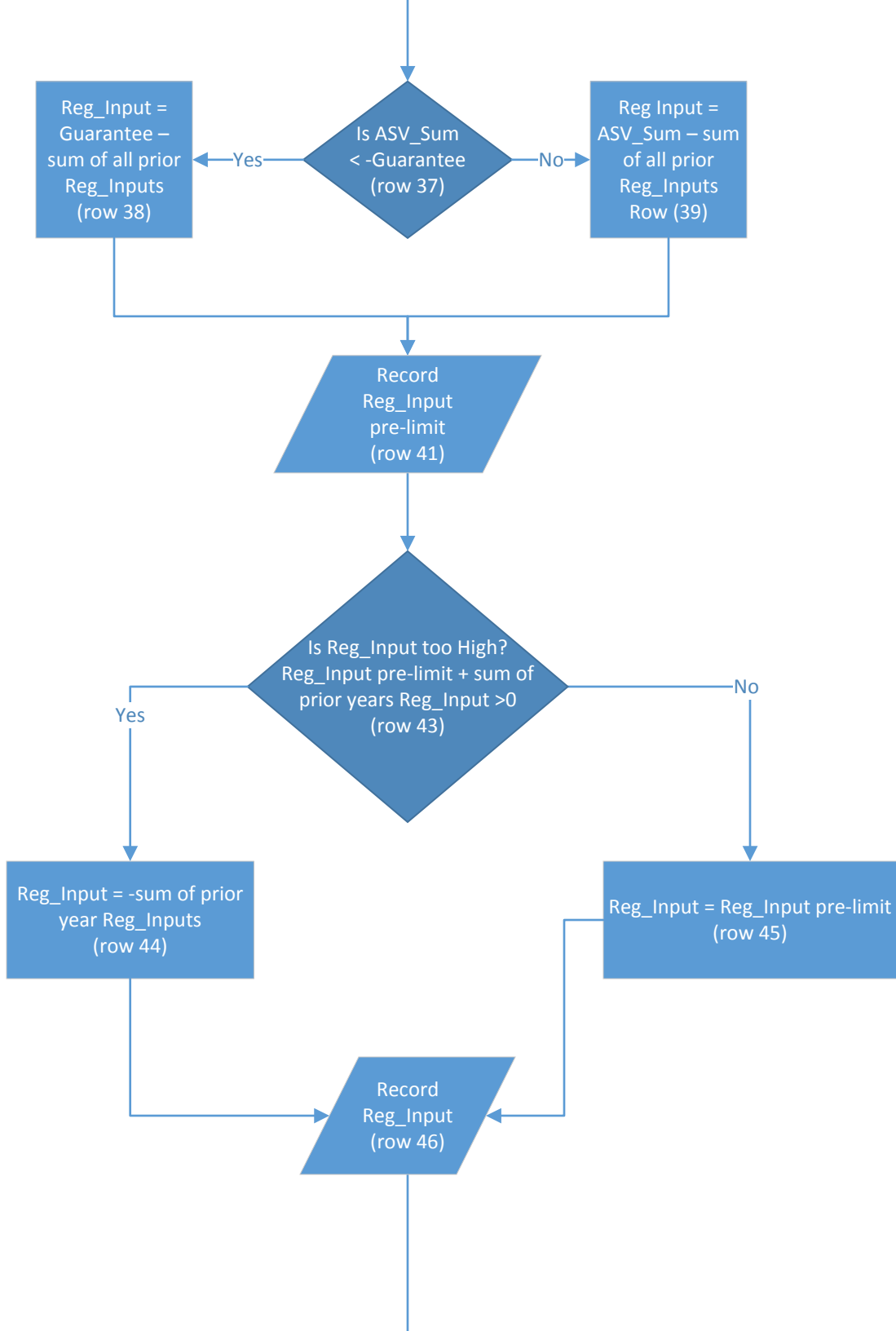
Guarantee = maximum exposure to the negative that the Company is exposed over the life of the guarantee. The Guarantee will be stated as a positive value. = \$41,176,471 gross with \$35,000,000 Missouri jurisdictional (cells B8 and B7)

Missouri Reg_Input = the jurisdictional percentage of the Reg_Input amount. The actual percentage will be based on the prior rate case's jurisdictional allocation ratios (row 48 excel)

Calculate AWV =
SPP\$ - WRR +
PPA_Replacement
(row 16)







Apply Missouri
Jurisdictional factor
= Reg_Input * 85%
(row 48)

End Year –
continue to next
year