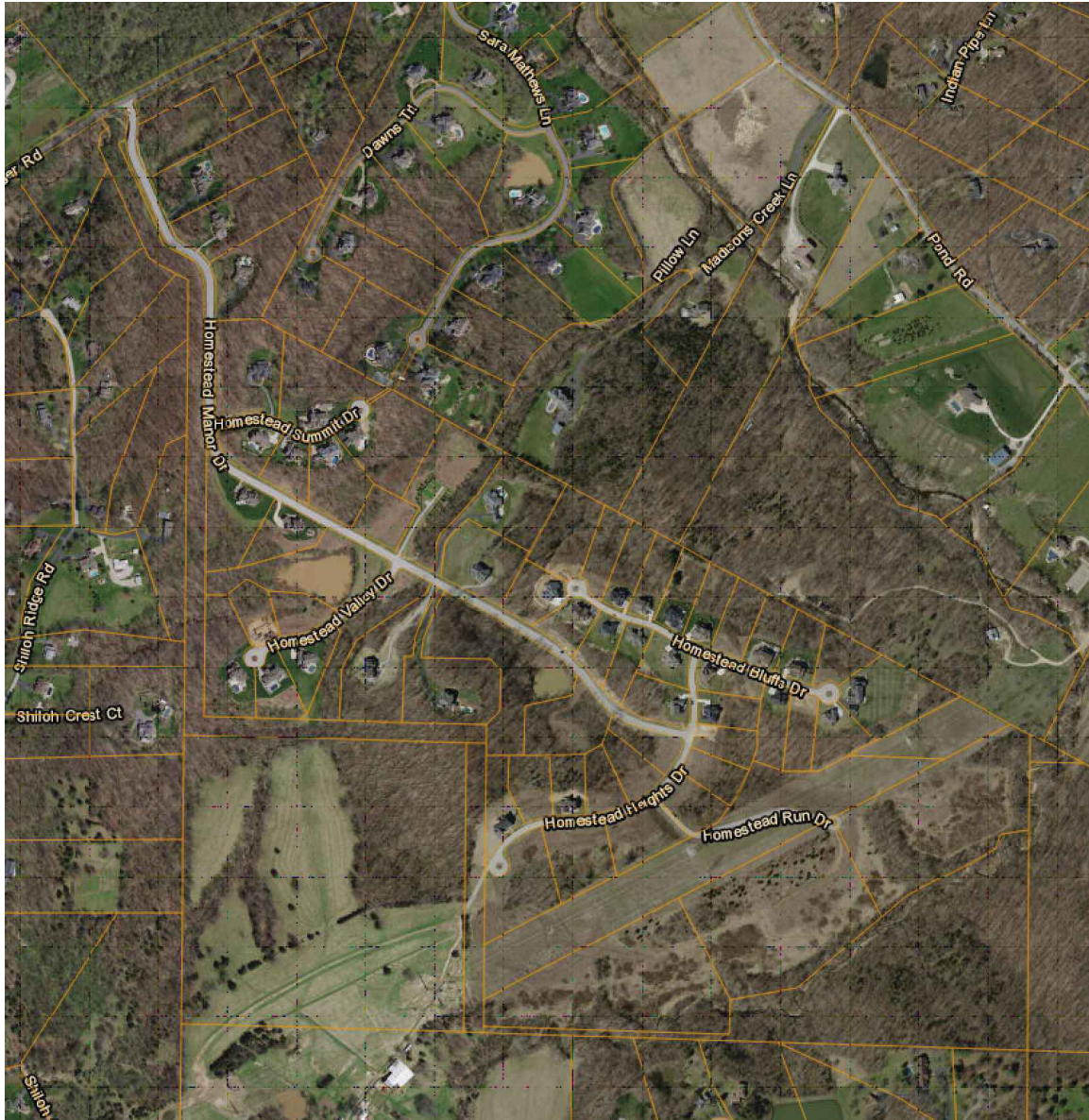


Missouri-American Water Company
NAME OF ISSUING CORPORATION

FOR Homestead Estates
COMMUNITY, TOWN, OR CITY

Service Area
Boundary Map



- * Indicates new rate or text
- + Indicates change

DATE OF ISSUE November 9, 2017 DATE EFFECTIVE December 9, 2017
Month Day Year Month Day Year

ISSUED BY Cheryl Norton, President
727 Craig Road, St. Louis, MO 63141