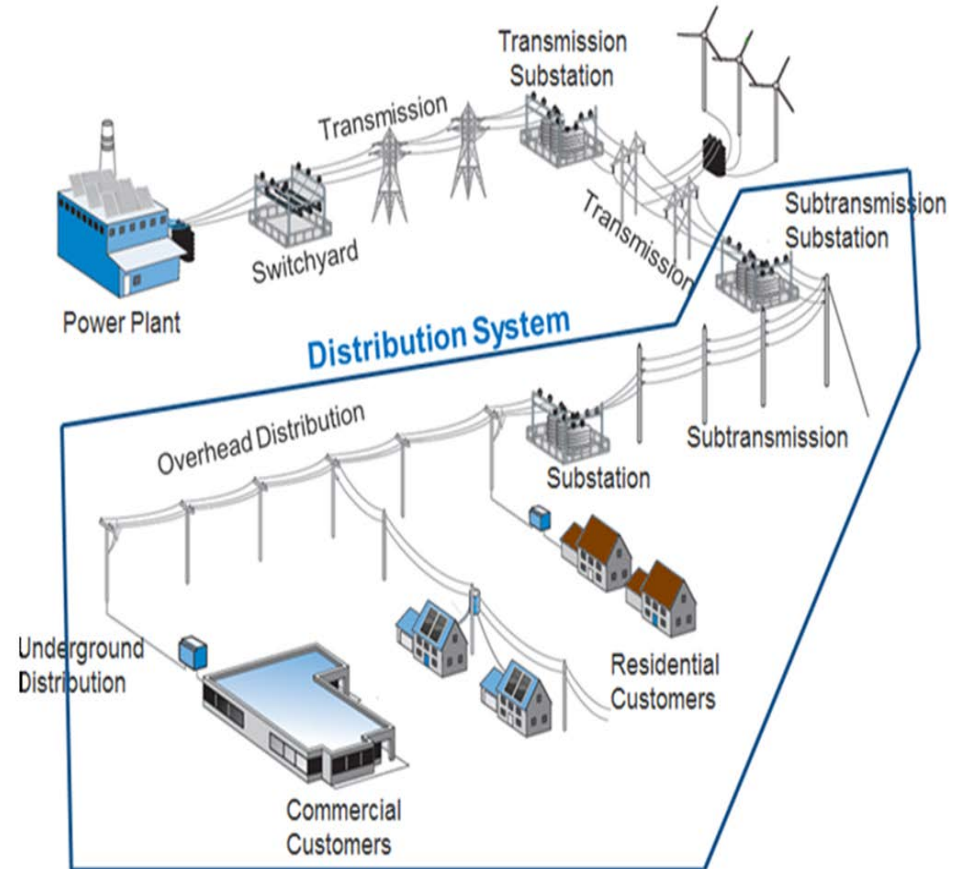


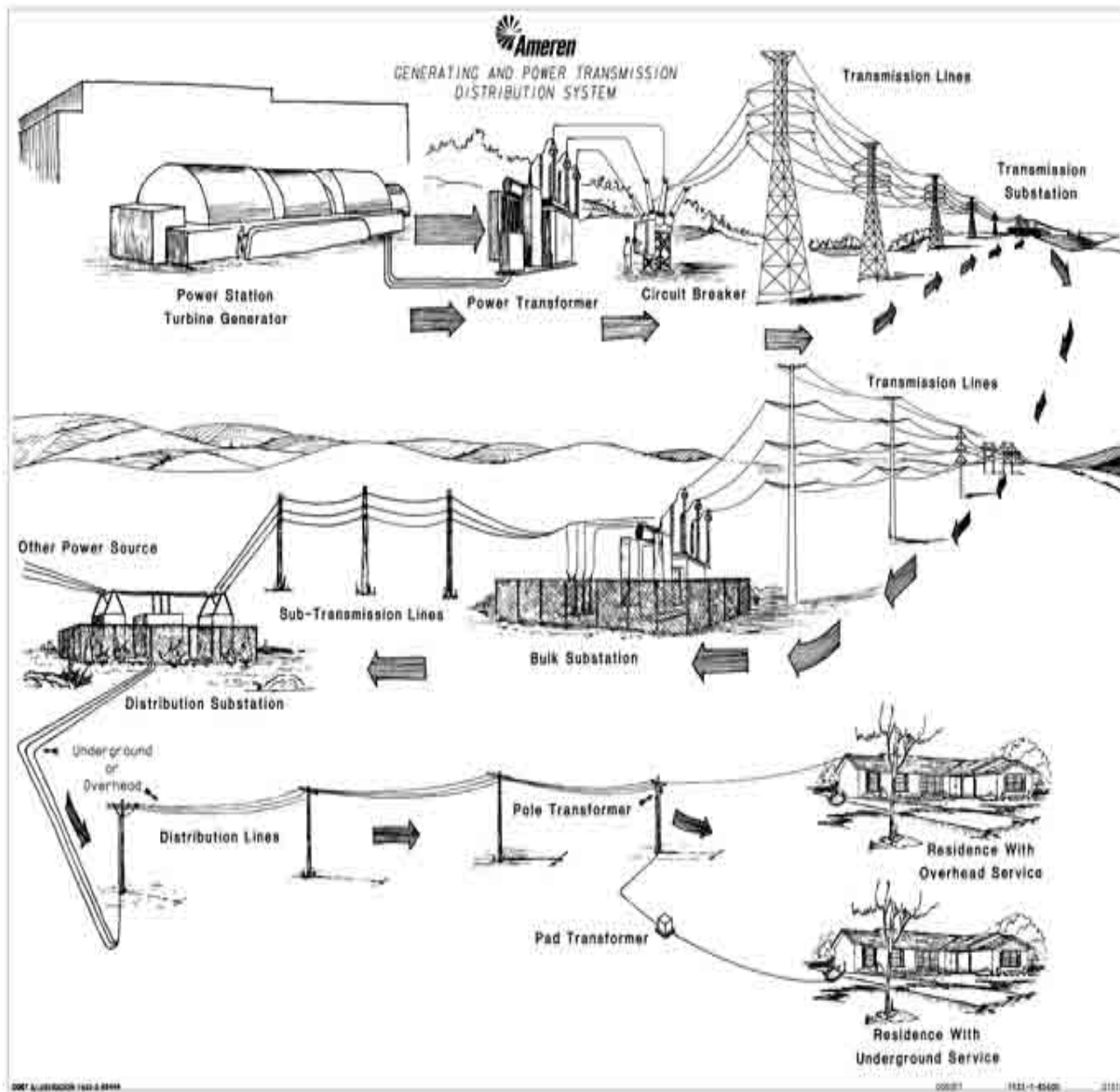
Infrastructure Efficiency Presentation for Chairman Hall



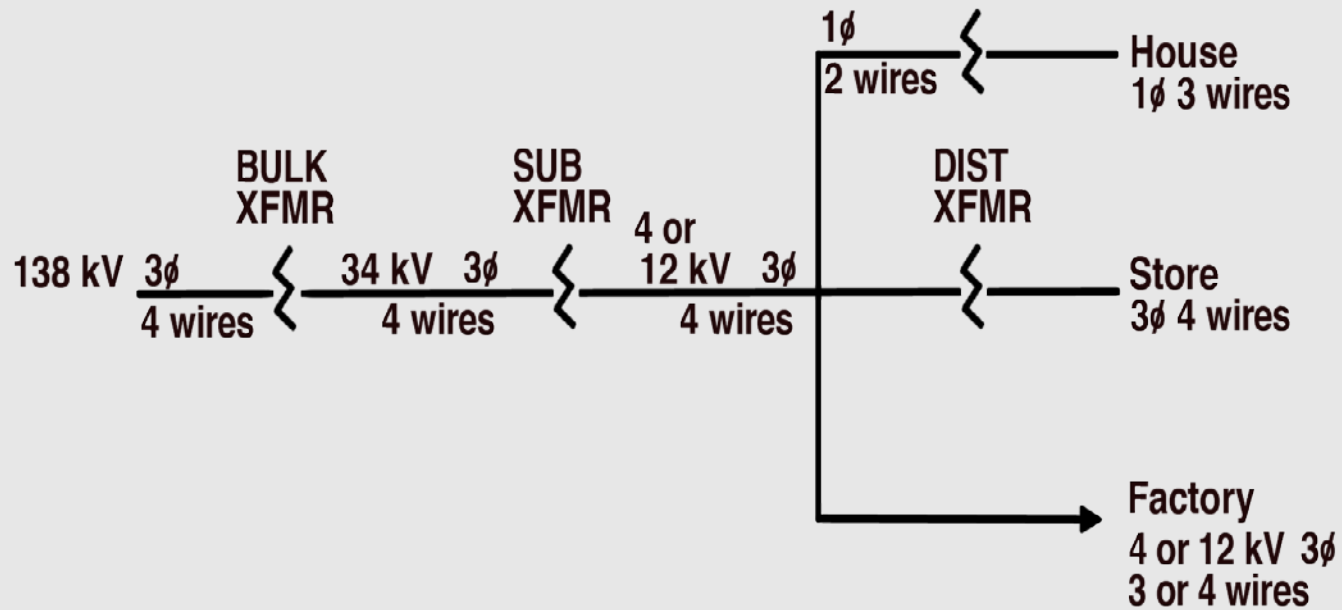
Distribution System Overview

- *Moves electrical energy from transmission system to each specific customer at the correct voltage and adequate supply*

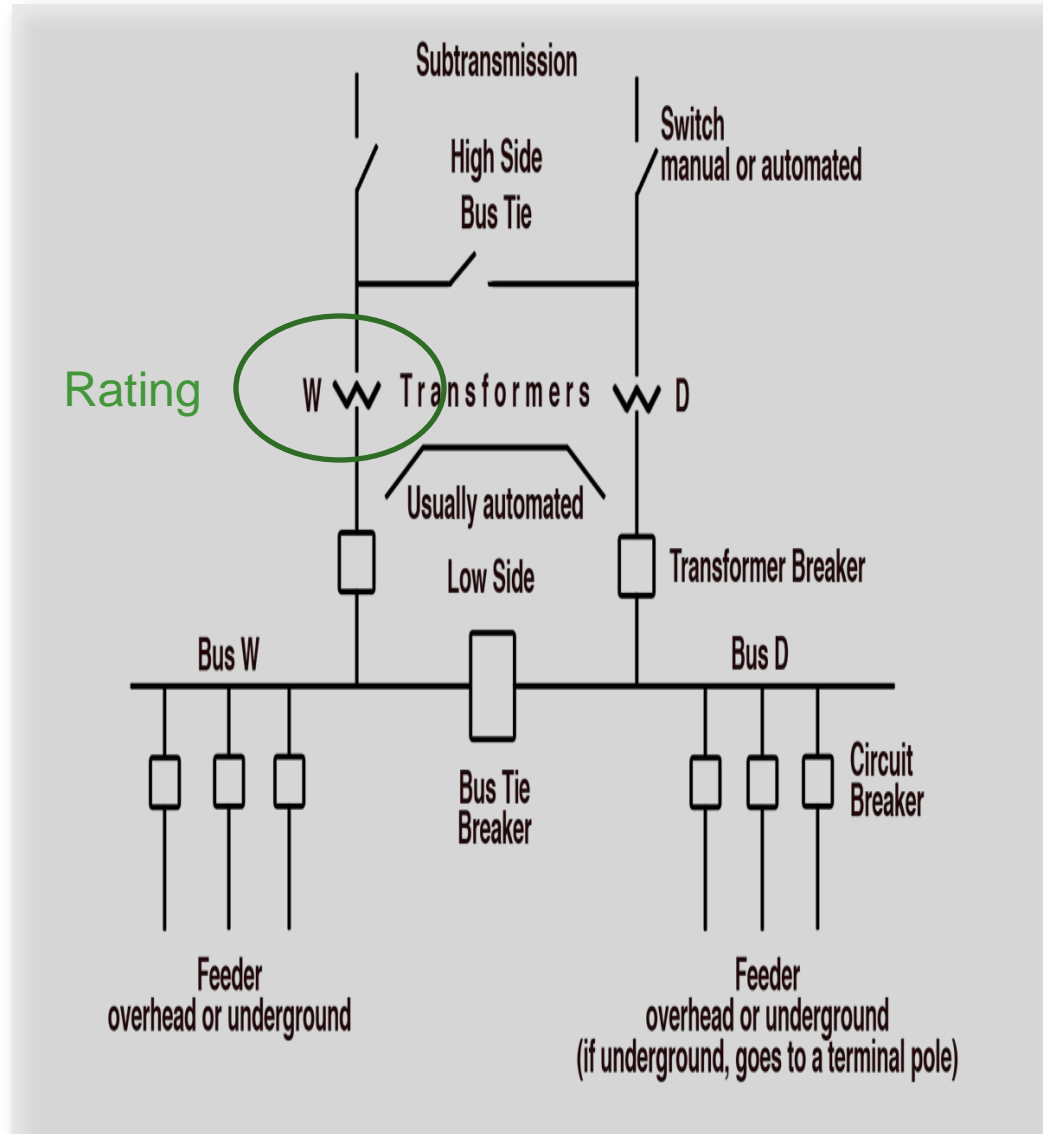




DISTRIBUTION

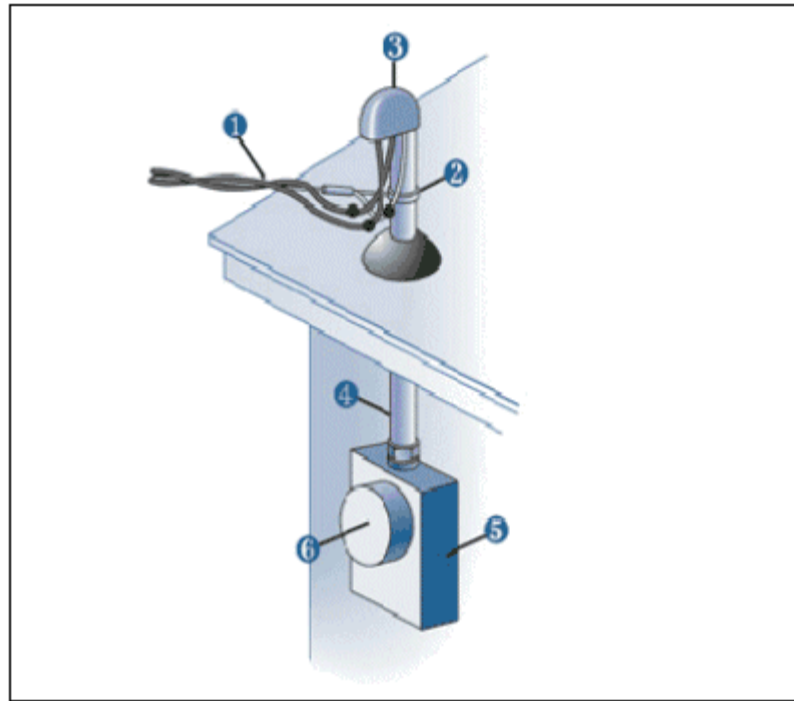


Typical Substation



Who owns
what?

What most
customers
don't
know.....



Ameren installs and maintains these components:

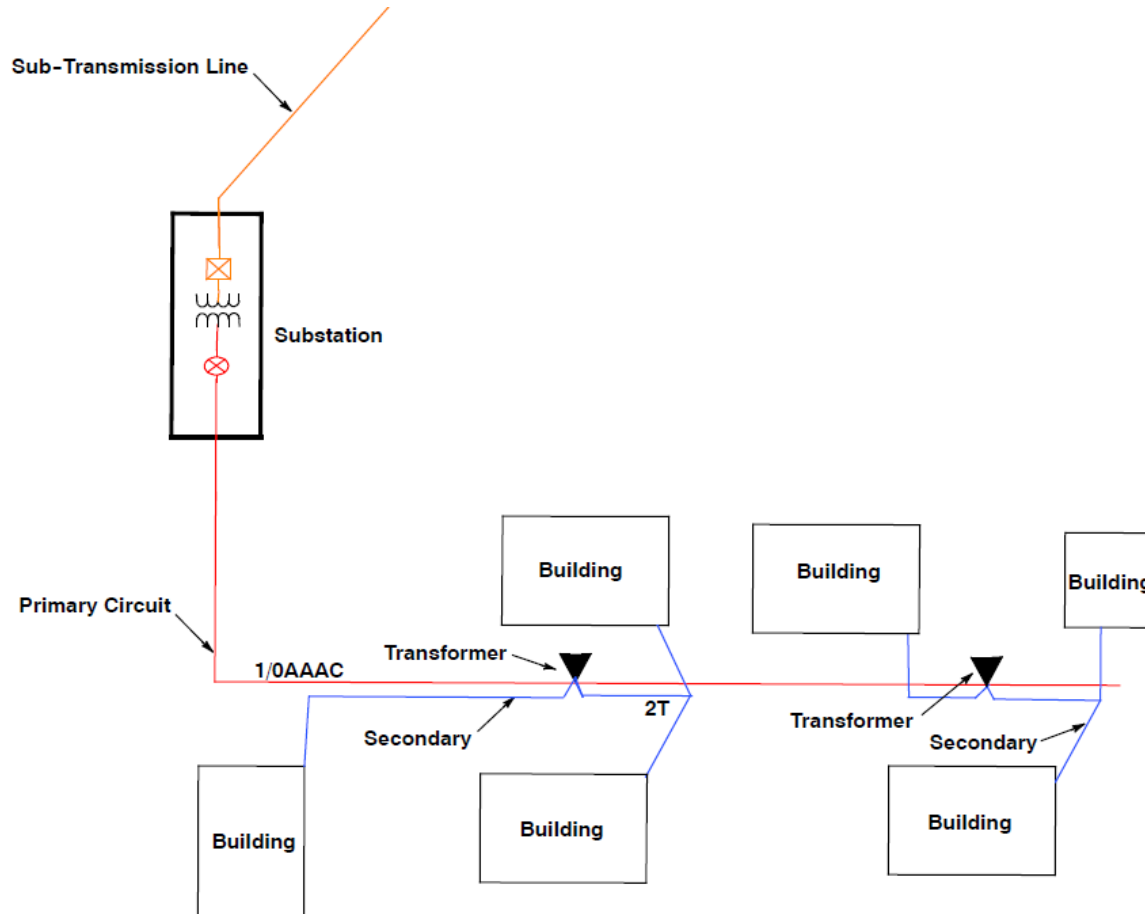
- 1 The service drop carries energy from the service line to your home or business.
- 6 The electric meter monitors how much energy you are using.

You are responsible for these components:

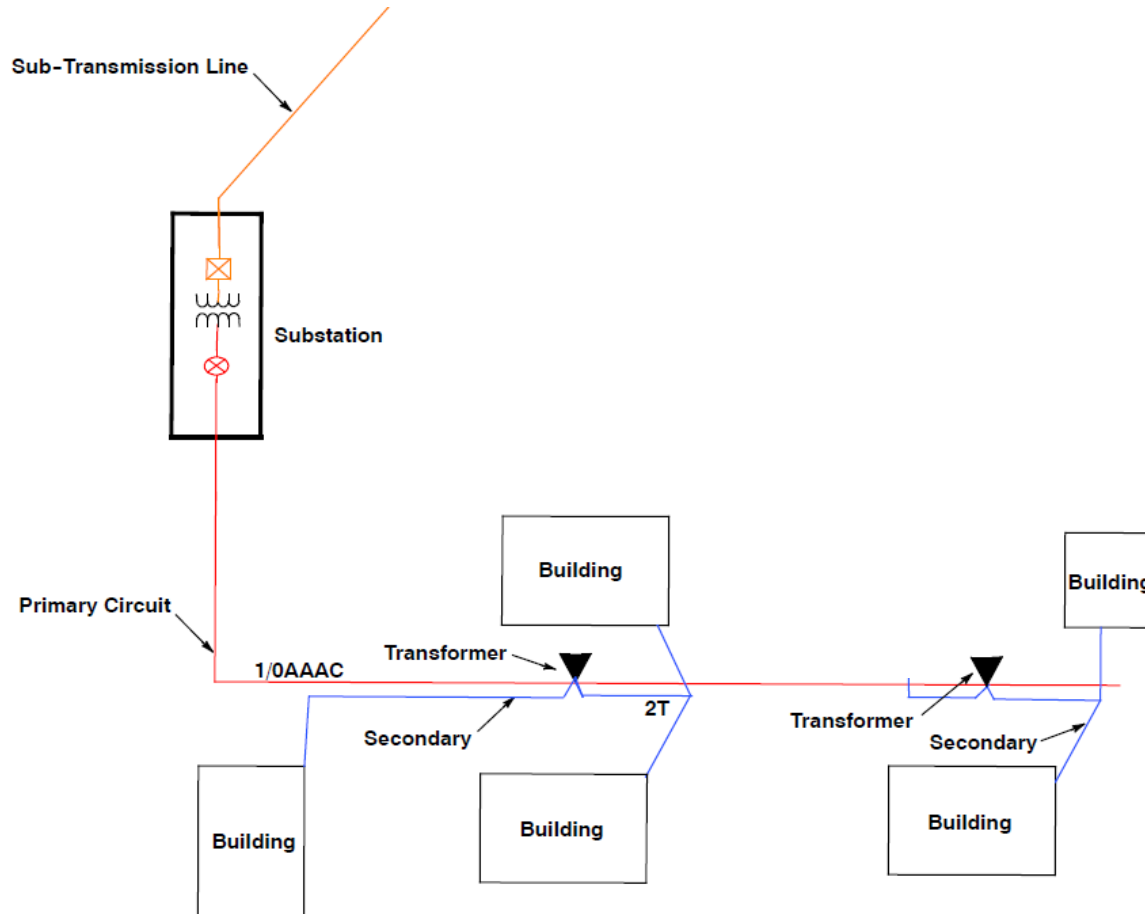
- 2 The service bracket or pipe riser, which protects the connection point for the lines entering your home or business.
- 3 The weatherhead, which keeps rain and other material out of the pipe riser.
- 4 The pipe riser, which serves as a guide and protection for the lines entering the meter box.
- 5 The meter box, which protects the connections to your electric meter.

Only a licensed electrician should ever attempt to work on these parts of your electrical system!

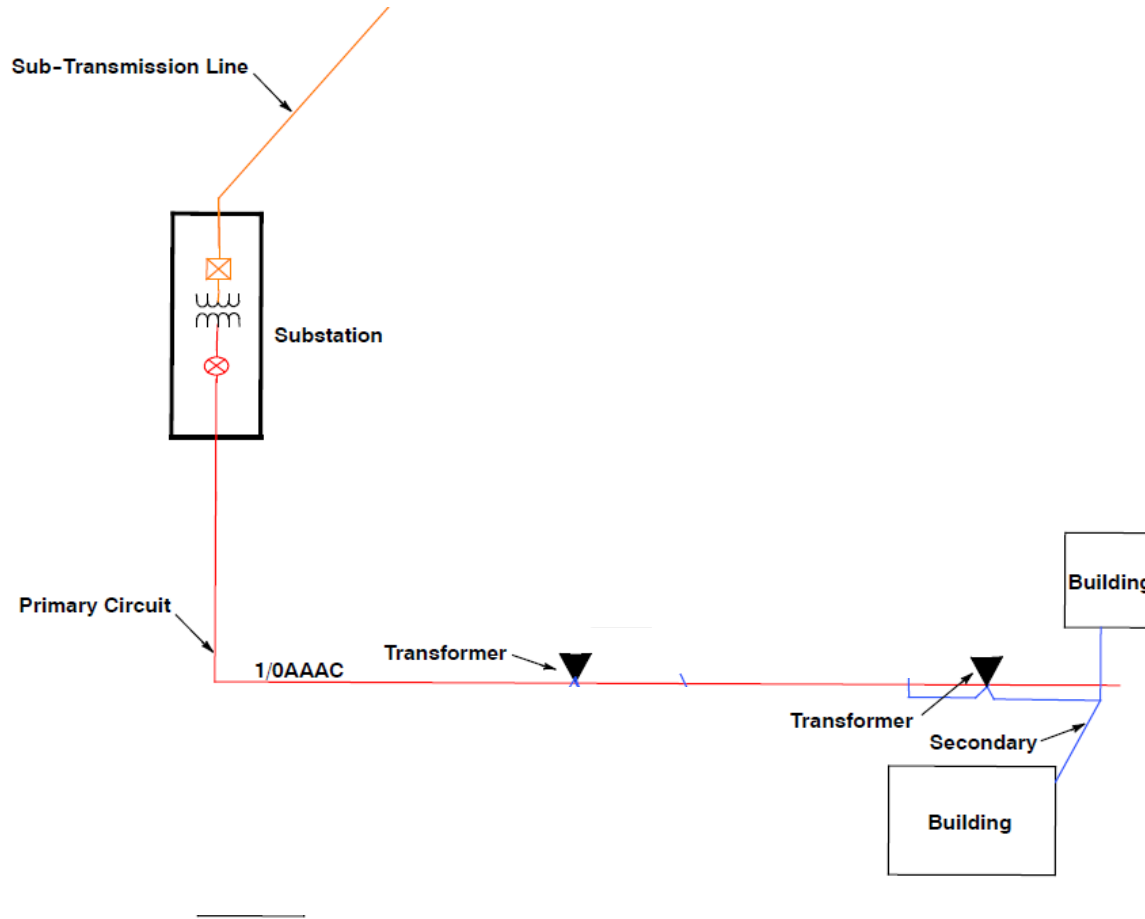
Example of a feeder supplying 6 buildings



Scenario 1 – One building is removed



Scenario 2 - Four buildings are removed



Larger Scale Scenario

- See Feeder Map

Questions

