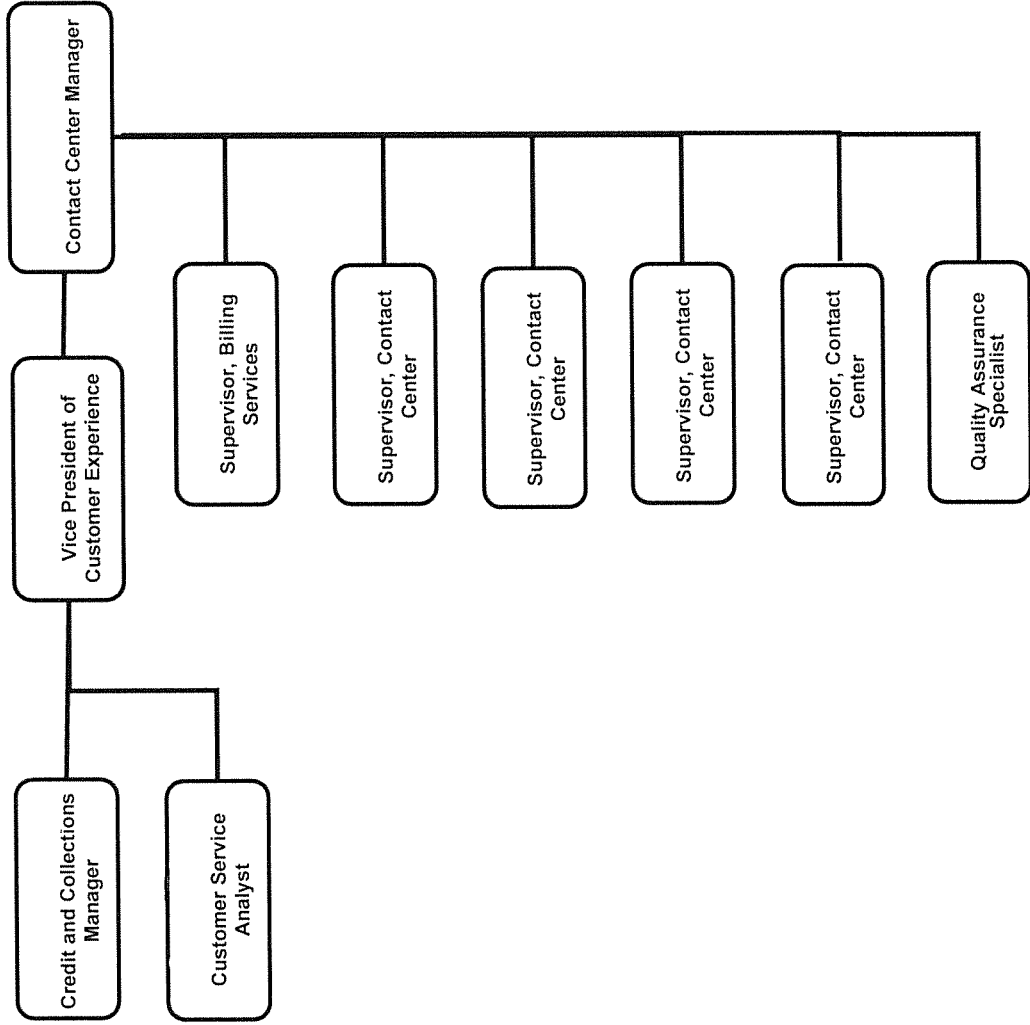
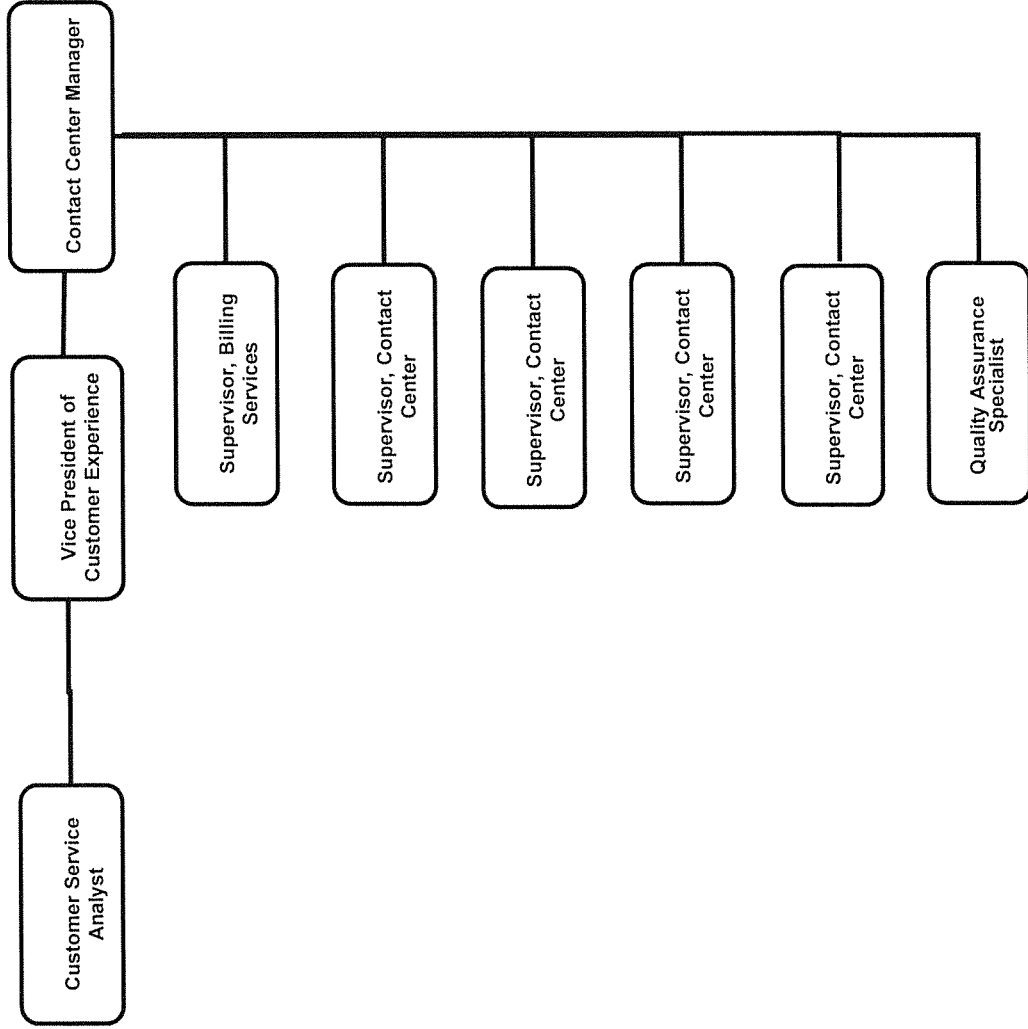


**Customer Service Organizational Chart**  
Jan-14 thru Feb-14

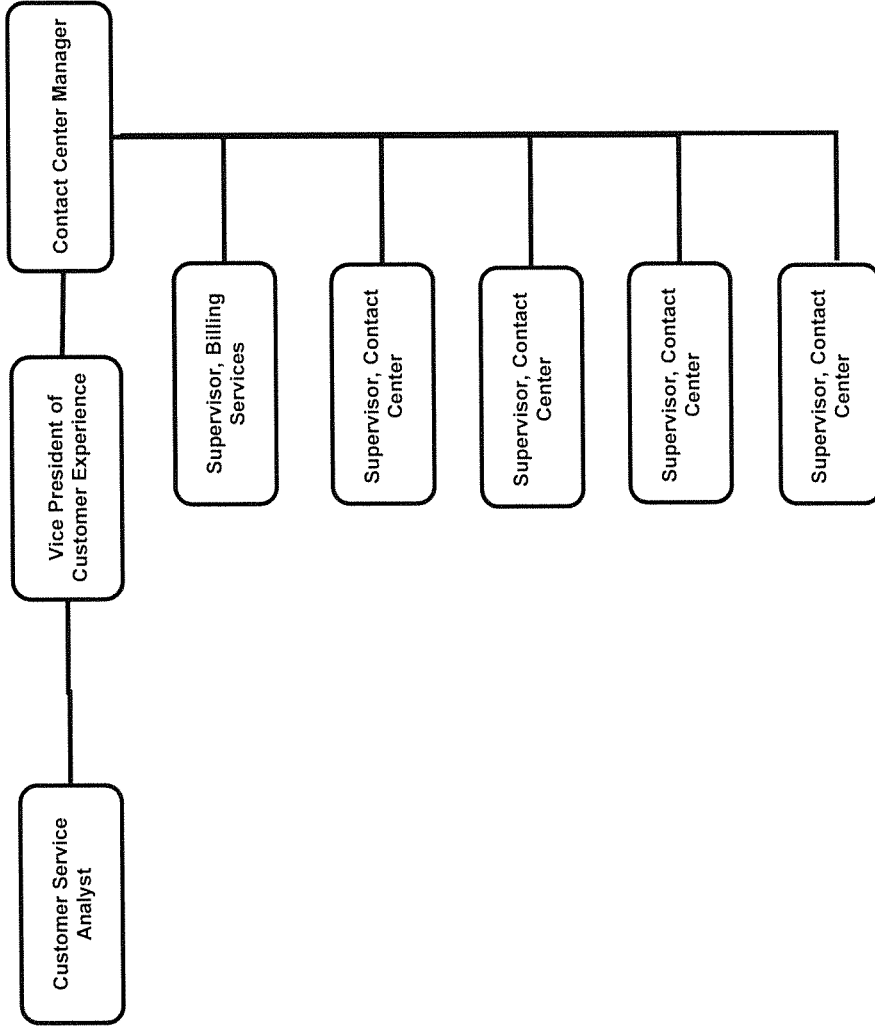


# Customer Service Organizational Chart

Mar-14 Apr-14 May-14

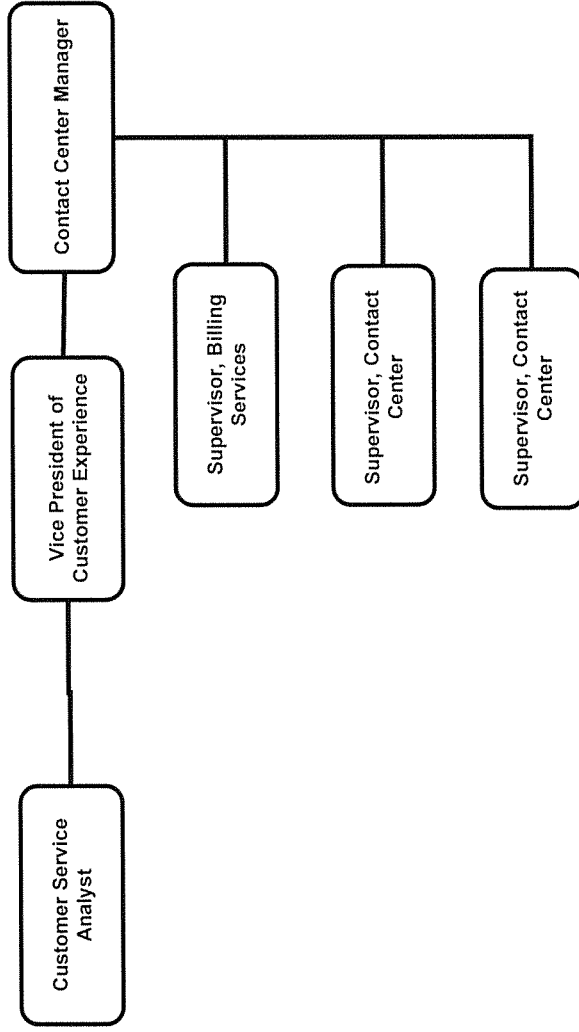


**Customer Service Organizational Chart**  
Jun-14 thru Jul-14

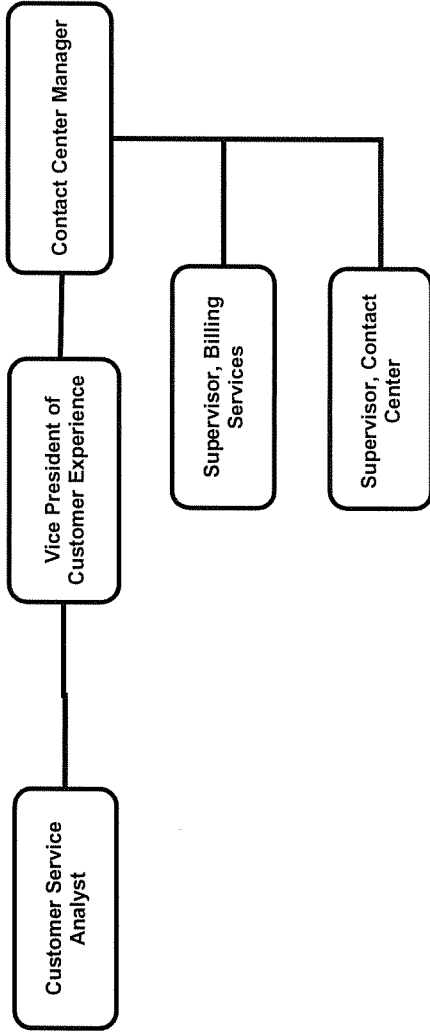


# Customer Service Organizational Chart

Aug-14 Sep-14 Oct-14



**Customer Service Organizational Chart**  
Nov-14 thru Dec-14



Missouri Gas Energy  
Customer Service Staff  
January 2014

	December		December		Term/Resign/New		January		January	
	Full Time	Part Time	Full Time	Part Time	FT	PT	Full Time	Part Time	Full Time	Part Time
Vice President	1	0					1	0		
Manager	2	0					2	0		
Supervisor	5	0					5	0		
Administrative Assistant	1	0					1	0		
Analyst	1	0					1	0		
Trainer	0	0					0	0		
Quality Assurance	1	0					1	0		
Loss Prevention Investigator	0	0					0	0		
Contact Center	24	32					24	32		
Training Class	0	0					0	0		
Billing Services	10	1					10	1		
Account Services	12	0					12	0		
Seasonal Employees	0	0					0	0		
PBO Joplin	0	0					0	0		
PBO Monett	1	0					1	0		
Long Term Disability	1	0					1	0		
<b>TOTAL</b>	<b>59</b>	<b>33</b>					<b>59</b>	<b>33</b>		
<b>GRAND TOTAL</b>		<b>92</b>						<b>92</b>		

Missouri Gas Energy  
 Customer Service Staff  
 February 2014

	January		January		Term/Resign/New		February		February	
	Full Time	Part Time	Full Time	Part Time	FT	PT	Full Time	Part Time	Full Time	Part Time
Vice President	1	0					1	0		
Manager	2	0					2	0		
Supervisor	5	0					5	0		
Administrative Assistant	1	0					1	0		
Analyst	1	0					1	0		
Trainer	0	0					0	0		
Quality Assurance	1	0					1	0		
Loss Prevention Investigator	0	0					0	0		
Contact Center	24	32					24	32		
Training Class	0	0					0	0		
Billing Services	10	1			-2		8	1		
Account Services	12	0					12	0		
Seasonal Employees	0	0					0	0		
PBO Joplin	0	0					0	0		
PBO Monett	1	0					1	0		
Long Term Disability	1	0					1	0		
<b>TOTAL</b>	59	33					57	33		
<b>GRAND TOTAL</b>	<b>92</b>		<b>90</b>							

Missouri Gas Energy  
Customer Service Staff  
March 2014

	February		February		Term/Resign/New		March		March	
	Full Time	Part Time	Full Time	Part Time	FT	PT	Full Time	Part Time	Full Time	Part Time
Vice President	1	0					1	0		
Manager	2	0			-1		1	0		
Supervisor	5	0					5	0		
Administrative Assistant	1	0					1	0		
Analyst	1	0					1	0		
Trainer	0	0					0	0		
Quality Assurance	1	0					1	0		
Loss Prevention Investigator	0	0					0	0		
Contact Center	24	32			1		25	32		
Training Class	0	0					0	0		
Billing Services	8	1					8	1		
Account Services	12	0					12	0		
Seasonal Employees	0	0					0	0		
PBO Joplin	0	0					0	0		
PBO Monett	1	0					1	0		
Long Term Disability	1	0			-1		0	0		
<b>TOTAL</b>	<b>57</b>	<b>33</b>					<b>56</b>	<b>33</b>		
<b>GRAND TOTAL</b>	<b>90</b>						<b>89</b>			



Missouri Gas Energy  
Customer Service Staff  
April 2014

	March		March		Term/Resign/New		April		April	
	Full Time	Part Time	Full Time	Part Time	FT	PT	Full Time	Part Time	Full Time	Part Time
Vice President	1	0	0	0			1	0	1	0
Manager	1	0	0	0			1	0	1	0
Supervisor	5	0	0	0			5	0	5	0
Administrative Assistant	1	0	0	0			1	0	1	0
Analyst	1	0	0	0			1	0	1	0
Trainer	0	0	0	0			0	0	0	0
Quality Assurance	1	0	0	0			1	0	1	0
Loss Prevention Investigator	0	0	0	0			0	0	0	0
Contact Center	25	32	32	0		-1	25	31	25	31
Training Class	0	0	0	0			0	0	0	0
Billing Services	8	1	1	0			8	1	8	1
Account Services	12	0	0	0			12	0	12	0
Seasonal Employees	0	0	0	0			0	0	0	0
PBO Joplin	0	0	0	0			0	0	0	0
PBO Monett	1	0	0	0			1	0	1	0
Long Term Disability	0	0	0	0			0	0	0	0
<b>TOTAL</b>	56	33	33	0			56	32	56	32
<b>GRAND TOTAL</b>	<b>89</b>		<b>88</b>				<b>88</b>			

Missouri Gas Energy  
Customer Service Staff  
May 2014

	April		April		Term/Resign/New		May		MAY	
	Full Time	Part Time	Part Time	PT	FT	PT	Full Time	Part Time	Full Time	Part Time
Vice President	1	0					1	0		
Manager	1	0					1	0		
Supervisor	5	0					5	0		
Administrative Assistant	1	0					1	0		
Analyst	1	0					1	0		
Trainer	0	0					0	0		
Quality Assurance	1	0					1	0		
Loss Prevention Investigator	0	0					0	0		
Contact Center	25	31			-1	-1	24	30		
Training Class	0	0					0	0		
Billing Services	8	1					8	1		
Account Services	12	0			-3		9	0		
Seasonal Employees	0	0					0	0		
PBO Joplin	0	0					0	0		
PBO Monett	1	0					1	0		
Long Term Disability	0	0					0	0		
<b>TOTAL</b>	56	32					52	31		
<b>GRAND TOTAL</b>	<b>88</b>						<b>83</b>			

Missouri Gas Energy  
 Customer Service Staff  
 June 2014

	May		May		Term/Resign/New		June		June	
	Full Time	Part Time	Full Time	Part Time	FT	PT	Full Time	Part Time	Full Time	Part Time
Vice President	1	0					1	0	1	0
Manager	1	0					1	0	1	0
Supervisor	5	0					5	0	5	0
Administrative Assistant	1	0					1	0	1	0
Analyst	1	0					1	0	1	0
Trainer	0	0					0	0	0	0
Quality Assurance	1	0					1	0	1	0
Loss Prevention Investigator	0	0					0	0	0	0
Contact Center	24	30	-2		-2	-2	22	28	22	28
Training Class	0	0					0	0	0	0
Billing Services	8	1	-2		-2		6	1	6	1
Account Services	9	0					9	0	9	0
Seasonal Employees	0	0					0	0	0	0
PBO Joplin	0	0					0	0	0	0
PBO Monett	1	0					1	0	1	0
Long Term Disability	0	0					0	0	0	0
<b>TOTAL</b>	<b>52</b>	<b>31</b>					<b>48</b>	<b>29</b>	<b>48</b>	<b>29</b>
<b>GRAND TOTAL</b>	<b>83</b>						<b>77</b>		<b>77</b>	

Missouri Gas Energy  
Customer Service Staff  
July 2014

	June		June		Term/Resign/New		July		July	
	Full Time	Part Time	Full Time	Part Time	FT	PT	Full Time	Part Time	Full Time	Part Time
Vice President	1	0					1	0		
Manager	1	0					1	0		
Supervisor	5	0					5	0		
Administrative Assistant	1	0					1	0		
Analyst	1	0					1	0		
Trainer	0	0					0	0		
Quality Assurance	1	0					1	0		
Loss Prevention Investigator	0	0					0	0		
Contact Center	22	28			-10	-2	12	26		
Training Class	0	0					0	0		
Billing Services	6	1			3	-1	9	0		
Account Services	9	0			5		14	0		
Seasonal Employees	0	0					0	0		
PBO Joplin	0	0					0	0		
PBO Monett	1	0					1	0		
Long Term Disability	0	0					0	0		
<b>TOTAL</b>	<b>48</b>	<b>29</b>					<b>46</b>	<b>26</b>		
<b>GRAND TOTAL</b>	<b>77</b>	<b>77</b>					<b>72</b>	<b>72</b>		

Missouri Gas Energy  
Customer Service Staff  
August 2014

	July		July		Term/Resign/New		August		August	
	Full Time	Part Time	Full Time	Part Time	FT	PT	Full Time	Part Time	Full Time	Part Time
Vice President	1	0					1	0		
Manager	1	0					1	0		
Supervisor	5	0			-2		3	0		
Administrative Assistant	1	0					1	0		
Analyst	1	0					1	0		
Trainer	0	0					0	0		
Quality Assurance	1	0			-1		0	0		
Loss Prevention Investigator	0	0					0	0		
Contact Center	12	26			-5	-18	7	8		
Training Class	0	0					0	0		
Billing Services	9	0			3		12	0		
Account Services	14	0			-1		13	0		
Seasonal Employees	0	0					0	0		
PBO Joplin	0	0					0	0		
PBO Monett	1	0			-1		0	0		
Long Term Disability	0	0					0	0		
<b>TOTAL</b>	<b>46</b>	<b>26</b>					<b>39</b>	<b>8</b>		
<b>GRAND TOTAL</b>	<b>72</b>						<b>47</b>			

Missouri Gas Energy  
 Customer Service Staff  
 September 2014

	August		August		Term/Resign/New		September		September	
	Full Time	Part Time	Full Time	Part Time	FT	PT	Full Time	Part Time	Full Time	Part Time
Vice President	1	0					1			0
Manager	1	0					1			0
Supervisor	3	0					3			0
Administrative Assistant	1	0					1			0
Analyst	1	0					1			0
Trainer	0	0					0			0
Quality Assurance	0	0					0			0
Loss Prevention Investigator	0	0					0			0
Contact Center	7	8			1	-2	8			6
Training Class	0	0					0			0
Billing Services	12	0					12			0
Account Services	13	0			-1		12			0
Seasonal Employees	0	0					0			0
PBO Joplin	0	0					0			0
PBO Monett	0	0					0			0
Long Term Disability	0	0					0			0
<b>TOTAL</b>	<b>39</b>	<b>8</b>					<b>39</b>			<b>6</b>
<b>GRAND TOTAL</b>	<b>47</b>						<b>45</b>			

Missouri Gas Energy  
Customer Service Staff  
October 2014

	September		September		Term/Resign/New		October		October	
	Full Time	Part Time	Full Time	Part Time	FT	PT	Full Time	Part Time	Full Time	Part Time
Vice President	1	0					1	0	1	0
Manager	1	0					1	0	1	0
Supervisor	3	0					3	0	3	0
Administrative Assistant	1	0					1	0	1	0
Analyst	1	0					1	0	1	0
Trainer	0	0					0	0	0	0
Quality Assurance	0	0					0	0	0	0
Loss Prevention Investigator	0	0					0	0	0	0
Contact Center	8	6					8	6	8	6
Training Class	0	0					0	0	0	0
Billing Services	12	0					12	0	12	0
Account Services	12	0					12	0	12	0
<b>West Center</b>	<b>51</b>	<b>0</b>					<b>51</b>	<b>0</b>	<b>51</b>	<b>0</b>
PBO Joplin	0	0					0	0	0	0
PBO Monett	0	0					0	0	0	0
Long Term Disability	0	0					0	0	0	0
<b>TOTAL</b>	<b>90</b>	<b>6</b>					<b>90</b>	<b>6</b>	<b>90</b>	<b>6</b>
<b>GRAND TOTAL</b>	<b>96</b>		<b>96</b>				<b>96</b>		<b>96</b>	

NOTE: West Center is now included in Customer Service Staff numbers.

Missouri Gas Energy  
 Customer Service Staff  
 November 2014

	October		October		Term/Resign/New		November		November	
	Full Time	Part Time	Full Time	Part Time	FT	PT	Full Time	Part Time	Full Time	Part Time
Vice President	1	0					1			0
Manager	1	0					1			0
Supervisor	3	0			-1		2			0
Administrative Assistant	1	0					1			0
Analyst	1	0					1			0
Trainer	0	0					0			0
Quality Assurance	0	0					0			0
Loss Prevention Investigator	0	0					0			0
Contact Center	8	6					8			6
Training Class	0	0					0			0
Billing Services	12	0					12			0
Account Services	12	0					12			0
West Center	51	0			-1		50			0
PBO Joplin	0	0					0			0
PBO Monett	0	0					0			0
Long Term Disability	0	0					0			0
<b>TOTAL</b>	<b>90</b>	<b>6</b>		<b>6</b>			<b>88</b>			<b>6</b>
<b>GRAND TOTAL</b>	<b>96</b>						<b>94</b>			



Missouri Gas Energy  
 Customer Service Staff  
 December 2014

	November		November		Term/Resign/New		December		December	
	Full Time	Part Time	Full Time	Part Time	FT	PT	Full Time	Part Time	Full Time	Part Time
Vice President	1	0					1	0	1	0
Manager	1	0					1	0	1	0
Supervisor	2	0					2	0	2	0
Administrative Assistant	1	0					1	0	1	0
Analyst	1	0					1	0	1	0
Trainer	0	0					0	0	0	0
Quality Assurance	0	0					0	0	0	0
Loss Prevention Investigator	0	0					0	0	0	0
Contact Center	8	6					8	6	8	6
Training Class	0	0					0	0	0	0
Billing Services	12	0					12	0	12	0
Account Services	12	0					12	0	12	0
West Center	50	0	10				60	0	60	0
PBO Joplin	0	0					0	0	0	0
PBO Monett	0	0					0	0	0	0
Long Term Disability	0	0					0	0	0	0
<b>TOTAL</b>	<b>88</b>	<b>6</b>					<b>98</b>	<b>6</b>	<b>98</b>	<b>6</b>
<b>GRAND TOTAL</b>	<b>94</b>		<b>104</b>							

















# ESTIMATED METER SUMMARY FOR August 14

RE: SOUTHERN REGION	1 month	2 months	3 months	4 months	5 months	6 months	7 months	8 months	9+ months	Grand Total
<b>Location:</b>										
JOPLIN, MO	5									5
MONETT, MO	0									0
<b>Region Total:</b>	5	0	0	0	0	0	0	0	0	5
<b>YEAR-TO-DATE TOTALS</b>	16	0	0	0	0	0	0	0	0	16
<b>RE: KANSAS CITY REGION</b>										
<b>Location:</b>										
INDEPENDENCE, MO	0	0	0	0						0
WARRENSBURG, MO	0	0	0							0
KANSAS CITY, MO	243	31	1							275
LEE'S SUMMIT, MO	71	5	0							76
ST. JOSEPH, MO	0	0	0							0
KANSAS CITY NORTH	271	19	2							292
<b>Region total:</b>	585	55	3	0	0	0	0	0	0	643
<b>YEAR-TO-DATE TOTALS</b>	843	70	3	0	0	0	0	0	0	916

# ESTIMATED METER SUMMARY FOR September 14

<b>RE: SOUTHERN REGION</b>		1 month	2 months	3 months	4 months	5 months	6 months	7 months	8 months	9+ months	Grand Total
<b>Location:</b>											
JOPLIN, MO		5	1								6
MONETT, MO		0	0								0
<b>Region Total:</b>											
		5	1	0	0	0	0	0	0	0	6
<b>YEAR-TO-DATE TOTALS</b>		21	1	0	0	0	0	0	0	0	22
<b>RE: KANSAS CITY REGION</b>											
<b>Location:</b>											
INDEPENDENCE, MO		0	0	0	0						0
WARRENSBURG, MO		0	0	0	0						0
KANSAS CITY, MO		185	70	8	0						263
LEE'S SUMMIT, MO		127	45	2	0						174
ST. JOSEPH, MO		0	0	0	0						0
KANSAS CITY NORTH		142	75	3	1						221
<b>Region total:</b>											
		454	190	13	1	0	0	0	0	0	658
<b>YEAR-TO-DATE TOTALS</b>		1,297	260	16	1	0	0	0	0	0	1,574

# ESTIMATED METER SUMMARY FOR October 14

<b>RE: SOUTHERN REGION</b>											
Location:	1 month	2 months	3 months	4 months	5 months	6 months	7 months	8 months	9+ months	Grand Total	
JOPLIN, MO	2	2	1							5	
MONETT, MO										0	
<b>Region Total:</b>	2	2	1	0	0	0	0	0	0	5	
<b>YEAR-TO-DATE TOTALS</b>	23	3	1	0	0	0	0	0	0	27	
<b>RE: KANSAS CITY REGION</b>											
Location:	1 month	2 months	3 months	4 months	5 months	6 months	7 months	8 months	9+ months	Grand Total	
INDEPENDENCE, MO	1									1	
WARRENSBURG, MO	6									6	
KANSAS CITY, MO	120	83	49	5						257	
LEE'S SUMMIT, MO	135	97	27	2						261	
ST. JOSEPH, MO										0	
KANSAS CITY NORTH	124	75	38							237	
<b>Region total:</b>	386	255	114	7	0	0	0	0	0	762	
<b>YEAR-TO-DATE TOTALS</b>	1,683	515	130	8	0	0	0	0	0	2,336	

# ESTIMATED METER SUMMARY FOR November 14

<b>RE: SOUTHERN REGION</b>		1 month	2 months	3 months	4 months	5 months	6 months	7 months	8 months	9+ months	Grand Total
<b>Location:</b>											
	JOPLIN, MO	8									8
	MONETT, MO										0
<b>Region Total:</b>		8									8
<b>YEAR-TO-DATE TOTALS</b>		31	3	1	0	0	0	0	0	0	35
<b>RE: KANSAS CITY REGION</b>											
<b>Location:</b>											
	INDEPENDENCE, MO										0
	WARRENSBURG, MO										0
	KANSAS CITY, MO	105	55	25	16	4					205
	LEE'S SUMMIT, MO	106	64	59	12	1					242
	ST. JOSEPH, MO										0
	KANSAS CITY NORTH	139	44	28	8						219
<b>Region total:</b>		350	163	112	36	5	0	0	0	0	666
<b>YEAR-TO-DATE TOTALS</b>		2,033	678	242	44	5	0	0	0	0	3,002

# ESTIMATED METER SUMMARY FOR December 14

<b>RE: SOUTHERN REGION</b>											
Location:	1 month	2 months	3 months	4 months	5 months	6 months	7 months	8 months	9+ months	Grand Total	
JOPLIN, MO	14	2								16	
MONETT, MO										0	
<b>Region Total:</b>	14	2	0	0	0	0	0	0	0	16	
<b>YEAR-TO-DATE TOTALS</b>	45	5	1	0	0	0	0	0	0	51	
<b>RE: KANSAS CITY REGION</b>											
Location:	1 month	2 months	3 months	4 months	5 months	6 months	7 months	8 months	9+ months	Grand Total	
INDEPENDENCE, MO	1									1	
WARRENSBURG, MO										0	
KANSAS CITY, MO	121	55	34	10	8	4				232	
LEE'S SUMMIT, MO	91	73	37	28	8	1				238	
ST. JOSEPH, MO										0	
KANSAS CITY NORTH	102	59	24	7	2					194	
<b>Region total:</b>	315	187	95	45	18	5	0	0	0	665	
<b>YEAR-TO-DATE TOTALS</b>	2,348	865	337	89	23	5	0	0	0	3,667	

Agent Biller ID	Store Name	Address1	City	State	Zip	Phone
9481	Hy-Vee #1033	625 Southwest US Highway 40	Blue Springs	MO	64014	816-224-4288
8071	Hy-Vee #1380	301 NE Rice Rd.	Lees Summit	MO	64086	816-524-5760
8021	Hy-Vee #1381	310 SW Ward Rd.	Lee's Summit	MO	64081	816-554-2200
9291	Smitty's Price Cutter #57	1850 Maiden Ln.	Joplin	MO	64801	417-626-0850
9301	Price Cutter #55	400 N. Massey Blvd.	Nixa	MO	65714	417-725-6166
9441	Price Cutter #17	1013 US HWY 60 East	Republic	MO	65738	417-732-2828
9451	Ramey Price Cutter #5	2150 E. Cleveland	Monett	MO	65708	417-236-2800
9461	Price Cutter #23	1503 W. MacArthur	Webb City	MO	64870	417-673-6300
9161	Woods Supermarket	312 W. Highway 54	El Dorado Springs	MO	64744	417-876-2831
9171	Bi-Lo Country Market	410 E. Young	Warrensburg	MO	64093	660-429-1188
8121	Kovac's	7014 King Hill Ave.	St. Joseph	MO	64504	816-238-2007
9701	Kovac's	2202 Fredrick Ave.	St. Joseph	MO	64506	816-364-2439
10811	ACE Cash Express #2332	1301 VANDIVER	Columbia	MO	65202	573-443-6344
10081	ACE Cash Express #2335	6303 MAIN St.	Grandview	MO	64030	816-382-0095
10091	ACE Cash Express #2336	7257 N. OAK TRAFFICWAY	Gladstone	MO	64118	816-468-7762
18921	ACE Cash Express #2712	5018 ROE Ave.	Roeland Park	KS	66205	913-432-6788
10721	ACE Cash Express #2716	6427 STATE Ave.	Kansas City	KS	66102	913-334-6699
10731	ACE Cash Express #2717	8837 W. 75TH St.	Overland Park	KS	66204	913-341-8036
10741	ACE Cash Express #2718	9970 W. 87TH St.	Overland Park	KS	66212	913-901-8300
10751	ACE Cash Express #2719	103 N. PARKER	Olathe	KS	66061	913-393-1311
10761	ACE Cash Express #2720	701-A CENTRAL Ave.	Kansas City	KS	66101	913-281-6401
10771	ACE Cash Express #2721	8222 PARALLEL Pkwy.	Kansas City	KS	66109	913-788-7831
10781	ACE Cash Express #2722	1264 CENTRAL Ave.	Kansas City	KS	66102	913-371-3866
10791	ACE Cash Express #2724	3112 STRONG Ave.	Kansas City	KS	66103	913-262-4414
9551	Hy-Vee #1384	109 N. Blue Jay Dr	Liberty	MO	64068	816-792-3210
9011	Apple Market	1215 Emmanuel Cleaver II Blvd.	Kansas City	MO	64110	816-931-7153
9531	Avenue Pawn	2706 Independence Ave.	Kansas City	MO	64124	816-483-6767
9491	Hy-Vee #1260	1525 E. 23rd Street S.	Independence	MO	64055	816-836-1177
9501	Hy-Vee #1321	207 N.E. Englewood Rd.	Kansas City	MO	64118	816-454-4776
9012	Apple Market	1215 Emmanuel Cleaver II Blvd.	Kansas City	MO	64110	816-931-7153
9581	The Cash Box	2532 Independence Ave.	Kansas City	MO	64124	816-241-2900
9601	Money Express	3800 Broadway	Kansas City	MO	64111	816-471-2274
9521	Ramey Price Cutter #21	1223 W. Central Ave.	Carthage	MO	64836	417-358-2624
8081	Price Cutter #24	1000 S. Neosho Blvd.	Neosho	MO	64850	417-451-3628
9931	Brown's Pharmacy	149 Crown Hill Rd.	Excelsior Springs	MO	64024	816-637-3188
9961	Blue Parkway Sun Fresh	4209 E. 50 Terrace	Kansas City	MO	64130	816-921-1212
10691	Dave's Country Market	105 S. Moreau	Tipton	MO	65081	660-433-2113
10021	Leon's Thriftway	4400 E. 39th St.	Kansas City	MO	64128	816-861-7900
10041	66 Food Mart	703 W. 7th St.	Joplin	MO	64801	417-782-6002
9962	Blue Parkway Sun Fresh	4209 E. 50 Terrace	Kansas City	MO	64130	816-921-1212
10131	Halls Food Mart #8	2002 Bird Ave.	Joplin	MO	64804	417-624-7720
10211	Waldo Financial	8437 Wornall Road	Kansas City	MO	64114	816-333-6800
10221	Money Mart Check Cashing	10408 Blue Ridge	Kansas City	MO	64134	816-765-6659
10241	Metro Thriftway	1616 E 63rd St	Kansas City	MO	64110	816-363-4292
10251	Poorman's Appliance	5030 Blue Ridge Cutoff	Raytown	MO	64133	816-353-4411

10281	Ramey Price Cutter #16	91 S. Main	Cassville	MO	65625	417-847-4155
8112	Hy-Vee #1552	201 N. Belt Highway	St. Joseph	MO	64506	816-232-9750
10311	Galena City Hall	111 Main Street	Galena	MO	65656	417-357-6226
9292	Smitty's Price Cutter #57	1850 Maiden Lane	Joplin	MO	64801	417-626-0850
10321	Rameys Price Cutter #26	Old Highway 37 and C	Purdy	MO	65734	417-442-3400
10331	Rameys Price Cutter #14	Highway 60 West	Granby	MO	64844	417-472-6443
10341	Ramey Price Cutter #15	708 S. Elliot	Aurora	MO	65605	417-678-3800
10361	Country Mart #73	15720 US Highway 160	Forsyth	MO	65653	417-546-2101
10391	Chit Chat - Raytown	9214 State Route 350	Raytown	MO	64133	816-737-1316
10401	Chit Chat - 23rd	11723 E 23rd Street	Independence	MO	64050	816-836-0572
1041	Bucks Country Mart	1601-09 Main St.	Higginsville	MO	64037	660-584-2200
10421	SummerFresh #81	1201 E 12th St.	Lamar	MO	64759	417-682-3777
10431	SummerFresh #88	200 Grand Ave.	Greenfield	MO	65661	417-637-2034
10441	SummerFresh #85	163 W. Old Mill Rd.	Fair Grove	MO	65648	417-759-7947
10451	SummerFresh #83	615 E. Mt Vernon Blvd.	Mt. Vernon	MO	65712	417-461-1717
10471	Hy-Vee #1034	1307 E North Ave	Belton	MO	64012	816-318-0400
10481	Kiosk 131- Balls Foods #12	4950 Roe Blvd.	Roeland Park	KS	66205	913-236-6262
10482	Kiosk 133 - Balls Foods #12	4950 Roe Blvd.	Roeland Park	KS	66205	913-236-6262
10501	Kiosk 216- Queens Price Chopper #4	8686 Antioch Road	Overland Park	KS	66212	913-383-2563
10511	Kiosk 97- Consentino's Price Chopper #249	22210 W. 66th Street	Shawnee	KS	66226	913-422-1230
10521	Kiosk 333- Consentino's Price Chopper #119	7418 W 119th Street	Overland Park	KS	66213	913-338-2000
10531	Kiosk 127- Balls Foods #16	12220 S. 71 Highway	Grandview	MO	64030	816-761-8767
10541	Kiosk 128- Balls Foods #17	9550 Blue Ridge Blvd.	Kansas City	MO	64134	816-761-8767
10551	Kiosk 132- Balls Foods #18	8430 Wornall Road	Kansas City	MO	64114	816-822-1870
10561	Kiosk 141- Balls Foods #11	4820 N. Oak Trafficway	Kansas City	MO	64118	816-454-0710
10571	Kiosk 142- Balls Foods #21	500 NE Barry Road	Kansas City	MO	64155	816-468-1188
10581	Kiosk 144- Balls Foods #29	6238 N. Chatham Road	Kansas City	MO	64151	816-746-1400
10591	Kiosk 320- Consentino's Apple Market #70	4300 Blue Ridge Blvd.	Kansas City	MO	64133	816-353-1626
10611	Kiosk 334- Consentino's Apple Market #137	11501 E 63rd Street	Raytown	MO	64133	816-353-4880
10621	Kiosk 335- Consentino's Apple Market #143	7506 Raytown Road	Raytown	MO	64138	816-358-0279
10631	Kiosk 321- Consentino's Price Chopper #102	1030 W 103rd Street	Kansas City	MO	64114	816-942-4200
10641	Kiosk 322- Consentino's Price Chopper #104	1100 S Route 7	Blue Springs	MO	64015	816-229-7011
10651	Kiosk 323- Consentino's Price Chopper #105	5800 Wilson Road	Kansas City	MO	64123	816-483-6948
10661	Kiosk 324- Consentino's Price Chopper #106	8700 E 63rd Street	Kansas City	MO	64133	816-358-2270
10671	Kiosk 331- Consentino's Price Chopper #109	1305 N Route 7 Highway	Blue Springs	MO	64014	816-224-6777
10681	Kiosk 325- Consentino's Sun Fresh #107	2415 NE Vivion Road	Kansas City	MO	64118	816-454-7887
10701	Kiosk 145- Fast Trip Food Store	700 S. Main St.	Cassville	MO	65652	417-847-4259
10711	Kiosk 129- Price Chopper	7734 State Avenue	Kansas City	KS	66109	913-299-8298
10801	Kiosk 164- Price Chopper #359	109 N. Cedar	Belton	MO	64012	816-322-1088
10821	The Cameron Market	1303 N.Walnut	Cameron	MO	64429	816-632-2441
10831	Kiosk 156 - Balls Foods #37	520 S Commercial St	Harrisonville	MO	64701	816-380-3266
10411	Murfin's Market	604 E. South St.	Ozark	MO	65721	417-581-3300
10841	Price Cutter #4	5504 N. 17th St.	Ozark	MO	65721	417-581-8873
10861	Schnucks #743	942 Valley Creek Drive	Farmington	MO	63640	573-664-5200
8031	Price Cutter #11	1730 S. Campbell Ave.	Springfield	MO	65807	417-862-4810







**Missouri Gas Energy  
Percent of Service Appointments Kept**

2003	<u>% Kept</u>

April through June	88.04%
<b>Quarter 2</b>	<b>88.04%</b>

July through September	87.88%
<b>Quarters 2 &amp; 3</b>	<b>87.96%</b>

October through December	87.71%
<b>Quarters 2, 3 &amp; 4</b>	<b>87.88%</b>

2006	<u>% Kept</u>
January through March	79.86%
<b>Quarter 1</b>	<b>79.86%</b>

April through June	76.31%
<b>Quarters 1 &amp; 2</b>	<b>77.99%</b>

July through September	80.36%
<b>Quarters 1, 2 &amp; 3</b>	<b>78.76%</b>

October through December	83.71%
<b>Calendar Year 2006</b>	<b>79.84%</b>

2009	<u>% Kept</u>
January through March	79.07%
<b>Quarter 1</b>	<b>79.07%</b>

April through June	78.95%
<b>Quarters 1 &amp; 2</b>	<b>79.01%</b>

July through September	82.36%
<b>Quarters 1, 2 &amp; 3</b>	<b>80.03%</b>

October through December	86.60%
<b>Calendar Year 2009</b>	<b>81.49%</b>

2012	<u>% Kept</u>
January through March	90.17%
<b>Quarter 1</b>	<b>90.17%</b>
April	89.26%
May	88.57%
June	88.50%
<b>Quarters 1 &amp; 2</b>	<b>89.46%</b>
July	87.77%
August	88.86%
September	94.64%
<b>Quarters 1, 2 &amp; 3</b>	<b>90.07%</b>
October	97.74%
November	97.76%
December	97.68%
<b>Calendar Year 2012</b>	<b>92.62%</b>

2004	<u>% Kept</u>
January through March	89.28%
<b>Quarter 1</b>	<b>89.28%</b>

April through June	88.10%
<b>Quarters 1 &amp; 2</b>	<b>88.66%</b>

July through September	87.99%
<b>Quarters 1, 2 &amp; 3</b>	<b>88.43%</b>

October through December	80.70%
<b>Calendar Year 2004</b>	<b>86.29%</b>

2007	<u>% Kept</u>
January through March	83.62%
<b>Quarter 1</b>	<b>83.62%</b>

April through June	73.40%
<b>Quarters 1 &amp; 2</b>	<b>77.88%</b>

July through September	76.48%
<b>Quarters 1, 2 &amp; 3</b>	<b>77.43%</b>

October through December	86.50%
<b>Calendar Year 2007</b>	<b>79.43%</b>

2010	<u>% Kept</u>
January through March	82.16%
<b>Quarter 1</b>	<b>82.16%</b>

April through June	82.37%
<b>Quarters 1 &amp; 2</b>	<b>82.28%</b>

July through September	90.06%
<b>Quarters 1, 2 &amp; 3</b>	<b>84.55%</b>

October through December	89.41%
<b>Calendar Year 2010</b>	<b>85.65%</b>

2013	<u>% Kept</u>
January	97.69%
February	97.60%
March	97.48%
<b>Quarter 1</b>	<b>97.57%</b>
April	98.11%
May	98.28%
June	98.16%
<b>Quarters 1 &amp; 2</b>	<b>97.90%</b>
July	98.05%
August	97.90%
September	97.74%
<b>Quarters 1, 2 &amp; 3</b>	<b>97.91%</b>
October	97.52%
November	97.24%
December	97.38%
<b>Calendar Year 2013</b>	<b>97.80%</b>

2005	<u>% Kept</u>
January through March	73.88%
<b>Quarter 1</b>	<b>73.88%</b>

April through June	83.40%
<b>Quarters 1 &amp; 2</b>	<b>78.81%</b>

July through September	81.29%
<b>Quarters 1, 2 &amp; 3</b>	<b>79.66%</b>

October through December	85.66%
<b>Calendar Year 2005</b>	<b>81.07%</b>

2008	<u>% Kept</u>
January through March	85.27%
<b>Quarter 1</b>	<b>85.27%</b>

April through June	80.47%
<b>Quarters 1 &amp; 2</b>	<b>82.43%</b>

July through September	82.86%
<b>Quarters 1, 2 &amp; 3</b>	<b>82.58%</b>

October through December	85.65%
<b>Calendar Year 2008</b>	<b>83.25%</b>

2011	<u>% Kept</u>
January through March	90.58%
<b>Quarter 1</b>	<b>90.58%</b>

April through June	90.35%
<b>Quarters 1 &amp; 2</b>	<b>90.45%</b>

July through September	88.92%
<b>Quarters 1, 2 &amp; 3</b>	<b>89.94%</b>

October through December	89.64%
<b>Calendar Year 2011</b>	<b>89.87%</b>

2014	<u>% Kept</u>
January	97.44%
February	97.02%
March	97.59%
<b>Quarter 1</b>	<b>97.35%</b>
April	97.58%
May	97.98%
June	98.33%
<b>Quarters 1 &amp; 2</b>	<b>97.69%</b>
July	98.03%
August	98.14%
September	98.07%
<b>Quarters 1, 2 &amp; 3</b>	<b>97.82%</b>
October	97.74%
November	97.11%
December	97.10%
<b>Calendar Year 2014</b>	<b>97.71%</b>

**Missouri Gas Energy**  
**Average Response Time to Commission-Forwarded Complaints**

2003	Answer Within 2 Business Days
April	92.00%
May	85.71%
June	83.33%
<b>Quarter 2</b>	<b>86.11%</b>
July	74.07%
August	72.73%
September	76.74%
<b>Quarters 2 &amp; 3</b>	<b>81.00%</b>
October	79.63%
November	76.09%
December	77.42%
<b>Quarters 2, 3 &amp; 4</b>	<b>79.76%</b>

2004	Answer Within 2 Business Days
January	74.19%
February	77.27%
March	75.61%
<b>Quarter 1</b>	<b>75.53%</b>
April	63.04%
May	73.91%
June	90.00%
<b>Quarters 1 &amp; 2</b>	<b>74.61%</b>
July	62.50%
August	65.00%
September	65.52%
<b>Quarters 1, 2 &amp; 3</b>	<b>71.33%</b>
October	67.00%
November	73.00%
December	85.00%
<b>Calendar Year 2004</b>	<b>72.14%</b>

2005	Answer Within 2 Business Days
January	91.49%
February	84.21%
March	71.05%
<b>Quarter 1</b>	<b>82.93%</b>
April	84.31%
May	80.65%
June	91.43%
<b>Quarters 1 &amp; 2</b>	<b>84.17%</b>
July	87.10%
August	79.31%
September	83.87%
<b>Quarters 1, 2 &amp; 3</b>	<b>83.52%</b>
October	82.86%
November	83.33%
December	92.86%
<b>Calendar Year 2005</b>	<b>84.45%</b>

2006	Answer Within 2 Business Days
January	92.59%
February	92.11%
March	85.29%
<b>Quarter 1</b>	<b>89.90%</b>
April	90.00%
May	89.66%
June	78.26%
<b>Quarters 1 &amp; 2</b>	<b>88.40%</b>
July	91.30%
August	87.50%
September	88.89%
<b>Quarters 1, 2 &amp; 3</b>	<b>88.66%</b>
October	96.88%
November	88.24%
December	93.75%
<b>Calendar Year 2006</b>	<b>89.74%</b>

2007	Answer Within 2 Business Days
January	90.48%
February	95.24%
March	88.89%
<b>Quarter 1</b>	<b>91.67%</b>
April	93.10%
May	88.89%
June	92.00%
<b>Quarters 1 &amp; 2</b>	<b>91.67%</b>
July	94.74%
August	88.24%
September	87.50%
<b>Quarters 1, 2 &amp; 3</b>	<b>91.48%</b>
October	93.33%
November	83.33%
December	91.30%
<b>Calendar Year 2007</b>	<b>90.95%</b>

2008	Answer Within 2 Business Days
January	92.86%
February	80.00%
March	88.89%
<b>Quarter 1</b>	<b>87.88%</b>
April	92.59%
May	91.30%
June	90.48%
<b>Quarters 1 &amp; 2</b>	<b>89.78%</b>
July	88.89%
August	88.00%
September	95.45%
<b>Quarters 1, 2 &amp; 3</b>	<b>91.06%</b>
October	71.43%
November	82.35%
December	87.88%
<b>Calendar Year 2008</b>	<b>87.93%</b>

2009	Answer Within 2 Business Days
January	91.67%
February	88.00%
March	80.65%
<b>Quarter 1</b>	<b>86.96%</b>
April	67.50%
May	80.00%
June	100.00%
<b>Quarters 1 &amp; 2</b>	<b>83.24%</b>
July	100.00%
August	97.10%
September	95.12%
<b>Quarters 1, 2 &amp; 3</b>	<b>89.18%</b>
October	66.67%
November	73.33%
December	83.33%
<b>Calendar Year 2009</b>	<b>85.50%</b>

2010	Answer Within 2 Business Days
January	100.00%
February	88.88%
March	85.00%
<b>Quarter 1</b>	<b>90.69%</b>
April	94.87%
May	92.31%
June	85.71%
<b>Quarters 1 &amp; 2</b>	<b>91.80%</b>
July	100.00%
August	88.89%
September	88.24%
<b>Quarters 1, 2 &amp; 3</b>	<b>92.00%</b>
October	100.00%
November	91.30%
December	95.00%
<b>Calendar Year 2010</b>	<b>92.61%</b>

2011	Answer Within 2 Business Days
January	90.91%
February	94.44%
March	100.00%
<b>Quarter 1</b>	<b>95.00%</b>
April	92.00%
May	92.31%
June	100.00%
<b>Quarters 1 &amp; 2</b>	<b>94.35%</b>
July	86.67%
August	94.12%
September	100.00%
<b>Quarters 1, 2 &amp; 3</b>	<b>94.15%</b>
October	92.86%
November	100.00%
December	90.00%
<b>Calendar Year 2011</b>	<b>94.34%</b>

2012	Answer Within 2 Business Days
January	75.00%
February	100.00%
March	100.00%
<b>Quarter 1</b>	<b>90.00%</b>
April	100.00%
May	100.00%
June	100.00%
<b>Quarters 1 &amp; 2</b>	<b>95.59%</b>
July	100.00%
August	100.00%
September	88.89%
<b>Quarters 1, 2 &amp; 3</b>	<b>96.26%</b>
October	100.00%
November	100.00%
December	84.62%
<b>Calendar Year 2012</b>	<b>95.97%</b>

2013	Answer Within 2 Business Days
January	100.00%
February	100.00%
March	100.00%
<b>Quarter 1</b>	<b>100.00%</b>
April	100.00%
May	100.00%
June	100.00%
<b>Quarters 1 &amp; 2</b>	<b>100.00%</b>
July	100.00%
August	100.00%
September	100.00%
<b>Quarters 1, 2 &amp; 3</b>	<b>100.00%</b>
October	100.00%
November	100.00%
December	100.00%
<b>Calendar Year 2013</b>	<b>100.00%</b>

2014	Answer Within 2 Business Days
January	100.00%
February	100.00%
March	100.00%
<b>Quarter 1</b>	<b>100.00%</b>
April	100.00%
May	100.00%
June	100.00%
<b>Quarters 1 &amp; 2</b>	<b>100.00%</b>
July	100.00%
August	100.00%
September	66.67%
<b>Quarters 1, 2 &amp; 3</b>	<b>98.25%</b>
October	71.43%
November	91.67%
December	93.33%
<b>Calendar Year 2014</b>	<b>94.17%</b>

REPORT ID: PDS001R1  
PGM ID: PDS00100

MISSOURI GAS ENERGY  
INSIDE METER COUNTS

PROCESS DATE: 02/01/2014  
RUN DATE: 02/01/2014  
TIME: 07:45

DIVISION: 02  
TOWN: 01  
TOTAL INSIDE METERS = 229  
  
TOWN: 02  
TOTAL INSIDE METERS = 7  
  
TOWN: 04  
TOTAL INSIDE METERS = 1

.....  
TOTAL NUMBER OF INSIDE METERS FOR DIVISION 02 = 237

DIVISION: 03  
TOWN: 01  
TOTAL INSIDE METERS = 44  
  
TOWN: 02  
TOTAL INSIDE METERS = 1  
  
TOWN: 04  
TOTAL INSIDE METERS = 1  
  
TOWN: 05  
TOTAL INSIDE METERS = 4  
  
TOWN: 06  
TOTAL INSIDE METERS = 1  
  
TOWN: 09  
TOTAL INSIDE METERS = 1  
  
TOWN: 12  
TOTAL INSIDE METERS = 43  
  
TOWN: 15  
TOTAL INSIDE METERS = 1  
  
TOWN: 17  
TOTAL INSIDE METERS = 1  
  
TOWN: 18  
TOTAL INSIDE METERS = 1  
  
TOWN: 22  
TOTAL INSIDE METERS = 11  
  
TOWN: 24  
TOTAL INSIDE METERS = 2

TOTAL NUMBER OF INSIDE METERS FOR DIVISION 03 = 111

DIVISION: 04  
TOWN: 01  
TOTAL INSIDE METERS = 13,896  
  
TOWN: 02  
TOTAL INSIDE METERS = 1

TOTAL NUMBER OF INSIDE METERS FOR DIVISION 04 = 13,897

DIVISION: 05  
TOWN: 01  
TOTAL INSIDE METERS = 42  
TOWN: 02  
TOTAL INSIDE METERS = 2  
TOWN: 03  
TOTAL INSIDE METERS = 2  
TOWN: 09  
TOTAL INSIDE METERS = 13  
TOWN: 51  
TOTAL INSIDE METERS = 4

TOTAL NUMBER OF INSIDE METERS FOR DIVISION 05 = 63

DIVISION: 06  
TOWN: 01  
TOTAL INSIDE METERS = 45  
TOWN: 09  
TOTAL INSIDE METERS = 1

TOTAL NUMBER OF INSIDE METERS FOR DIVISION 06 = 46

DIVISION: 08  
TOWN: 01  
TOTAL INSIDE METERS = 2  
TOWN: 09  
TOTAL INSIDE METERS = 1

TOTAL NUMBER OF INSIDE METERS FOR DIVISION 08 = 3

DIVISION: 09  
TOWN: 01  
TOTAL INSIDE METERS = 31  
TOWN: 02  
TOTAL INSIDE METERS = 7  
TOWN: 03  
TOTAL INSIDE METERS = 11  
TOWN: 04  
TOTAL INSIDE METERS = 3  
TOWN: 05  
TOTAL INSIDE METERS = 16  
TOWN: 06  
TOTAL INSIDE METERS = 57  
TOWN: 08  
TOTAL INSIDE METERS = 1  
TOWN: 09  
TOTAL INSIDE METERS = 2  
TOWN: 13  
TOTAL INSIDE METERS = 1

TOWN: 24  
TOTAL INSIDE METERS = 1

TOWN: 25  
TOTAL INSIDE METERS = 2

TOWN: 26  
TOTAL INSIDE METERS = 1

TOWN: 27  
TOTAL INSIDE METERS = 4

TOWN: 28  
TOTAL INSIDE METERS = 2

TOWN: 31  
TOTAL INSIDE METERS = 4

TOWN: 32  
TOTAL INSIDE METERS = 19

TOTAL NUMBER OF INSIDE METERS FOR DIVISION 09 = 162

DIVISION: 10  
TOWN: 01  
TOTAL INSIDE METERS = 248

TOWN: 02  
TOTAL INSIDE METERS = 2

TOTAL NUMBER OF INSIDE METERS FOR DIVISION 10 = 250

DIVISION: 12  
TOWN: 02  
TOTAL INSIDE METERS = 4

TOWN: 03  
TOTAL INSIDE METERS = 3

TOWN: 05  
TOTAL INSIDE METERS = 2

TOWN: 07  
TOTAL INSIDE METERS = 78

TOWN: 13  
TOTAL INSIDE METERS = 8

TOWN: 15  
TOTAL INSIDE METERS = 8

TOWN: 16  
TOTAL INSIDE METERS = 4

TOWN: 17  
TOTAL INSIDE METERS = 3

TOWN: 19  
TOTAL INSIDE METERS = 17

TOWN: 22  
TOTAL INSIDE METERS = 1

TOWN: 27  
TOTAL INSIDE METERS = 3

TOWN:	29	TOTAL INSIDE METERS =	2
TOWN:	32	TOTAL INSIDE METERS =	2
TOWN:	33	TOTAL INSIDE METERS =	1
TOWN:	35	TOTAL INSIDE METERS =	1
TOWN:	36	TOTAL INSIDE METERS =	2
TOWN:	38	TOTAL INSIDE METERS =	5
TOWN:	39	TOTAL INSIDE METERS =	3
TOWN:	51	TOTAL INSIDE METERS =	54
TOWN:	57	TOTAL INSIDE METERS =	1
TOWN:	58	TOTAL INSIDE METERS =	2
TOWN:	60	TOTAL INSIDE METERS =	9
TOWN:	61	TOTAL INSIDE METERS =	9
TOWN:	67	TOTAL INSIDE METERS =	4
TOWN:	71	TOTAL INSIDE METERS =	104
TOWN:	72	TOTAL INSIDE METERS =	115
TOWN:	73	TOTAL INSIDE METERS =	1
TOWN:	74	TOTAL INSIDE METERS =	48

TOTAL NUMBER OF INSIDE METERS FOR DIVISION 12 = 494

TOTAL NUMBER OF INSIDE METERS COMPANY WIDE = 15,263  
 E N D O F R E P O R T

REPORT ID: PDS001R1  
PGM ID: PDS00100

MISSOURI GAS ENERGY  
INSIDE METER COUNTS

PROCESS DATE: 03/01/2014  
RUN DATE: 03/01/2014  
TIME: 07:45

DIVISION: 02  
TOWN: 01  
TOTAL INSIDE METERS = 225  
  
TOWN: 02  
TOTAL INSIDE METERS = 7  
  
TOWN: 04  
TOTAL INSIDE METERS = 1

TOTAL NUMBER OF INSIDE METERS FOR DIVISION 02 = 233

DIVISION: 03  
TOWN: 01  
TOTAL INSIDE METERS = 43  
  
TOWN: 02  
TOTAL INSIDE METERS = 1  
  
TOWN: 04  
TOTAL INSIDE METERS = 1  
  
TOWN: 05  
TOTAL INSIDE METERS = 4  
  
TOWN: 06  
TOTAL INSIDE METERS = 1  
  
TOWN: 09  
TOTAL INSIDE METERS = 1  
  
TOWN: 12  
TOTAL INSIDE METERS = 43  
  
TOWN: 15  
TOTAL INSIDE METERS = 1  
  
TOWN: 17  
TOTAL INSIDE METERS = 1  
  
TOWN: 18  
TOTAL INSIDE METERS = 1  
  
TOWN: 22  
TOTAL INSIDE METERS = 11  
  
TOWN: 24  
TOTAL INSIDE METERS = 2

TOTAL NUMBER OF INSIDE METERS FOR DIVISION 03 = 110

DIVISION: 04  
TOWN: 01  
TOTAL INSIDE METERS = 13,834  
  
TOWN: 02  
TOTAL INSIDE METERS = 1

TOTAL NUMBER OF INSIDE METERS FOR DIVISION 04 = 13,835



DIVISION: 05  
TOWN: 01  
TOTAL INSIDE METERS = 42  
  
TOWN: 02  
TOTAL INSIDE METERS = 2  
  
TOWN: 03  
TOTAL INSIDE METERS = 2  
  
TOWN: 09  
TOTAL INSIDE METERS = 13  
  
TOWN: 51  
TOTAL INSIDE METERS = 4

TOTAL NUMBER OF INSIDE METERS FOR DIVISION 05 = 63

DIVISION: 06  
TOWN: 01  
TOTAL INSIDE METERS = 45  
  
TOWN: 09  
TOTAL INSIDE METERS = 1

TOTAL NUMBER OF INSIDE METERS FOR DIVISION 06 = 46

DIVISION: 08  
TOWN: 01  
TOTAL INSIDE METERS = 2  
  
TOWN: 09  
TOTAL INSIDE METERS = 1

TOTAL NUMBER OF INSIDE METERS FOR DIVISION 08 = 3

DIVISION: 09  
TOWN: 01  
TOTAL INSIDE METERS = 31  
  
TOWN: 02  
TOTAL INSIDE METERS = 7  
  
TOWN: 03  
TOTAL INSIDE METERS = 11  
  
TOWN: 04  
TOTAL INSIDE METERS = 3  
  
TOWN: 05  
TOTAL INSIDE METERS = 16  
  
TOWN: 06  
TOTAL INSIDE METERS = 57  
  
TOWN: 08  
TOTAL INSIDE METERS = 1  
  
TOWN: 09  
TOTAL INSIDE METERS = 2  
  
TOWN: 13  
TOTAL INSIDE METERS = 1

TOWN: 24  
TOTAL INSIDE METERS = 1

TOWN: 25  
TOTAL INSIDE METERS = 2

TOWN: 26  
TOTAL INSIDE METERS = 1

TOWN: 27  
TOTAL INSIDE METERS = 4

TOWN: 28  
TOTAL INSIDE METERS = 2

TOWN: 31  
TOTAL INSIDE METERS = 4

TOWN: 32  
TOTAL INSIDE METERS = 19

TOTAL NUMBER OF INSIDE METERS FOR DIVISION 09 = 162

DIVISION: 10

TOWN: 01  
TOTAL INSIDE METERS = 248

TOWN: 02  
TOTAL INSIDE METERS = 2

TOTAL NUMBER OF INSIDE METERS FOR DIVISION 10 = 250

DIVISION: 12

TOWN: 02  
TOTAL INSIDE METERS = 4

TOWN: 03  
TOTAL INSIDE METERS = 3

TOWN: 05  
TOTAL INSIDE METERS = 2

TOWN: 07  
TOTAL INSIDE METERS = 77

TOWN: 13  
TOTAL INSIDE METERS = 8

TOWN: 15  
TOTAL INSIDE METERS = 8

TOWN: 16  
TOTAL INSIDE METERS = 4

TOWN: 17  
TOTAL INSIDE METERS = 3

TOWN: 19  
TOTAL INSIDE METERS = 17

TOWN: 22  
TOTAL INSIDE METERS = 1

TOWN: 27  
TOTAL INSIDE METERS = 3

TOWN:	29	TOTAL INSIDE METERS =	2
TOWN:	32	TOTAL INSIDE METERS =	2
TOWN:	33	TOTAL INSIDE METERS =	1
TOWN:	35	TOTAL INSIDE METERS =	1
TOWN:	36	TOTAL INSIDE METERS =	2
TOWN:	38	TOTAL INSIDE METERS =	5
TOWN:	39	TOTAL INSIDE METERS =	3
TOWN:	51	TOTAL INSIDE METERS =	54
TOWN:	57	TOTAL INSIDE METERS =	1
TOWN:	58	TOTAL INSIDE METERS =	2
TOWN:	60	TOTAL INSIDE METERS =	9
TOWN:	61	TOTAL INSIDE METERS =	9
TOWN:	67	TOTAL INSIDE METERS =	4
TOWN:	71	TOTAL INSIDE METERS =	104
TOWN:	72	TOTAL INSIDE METERS =	113
TOWN:	73	TOTAL INSIDE METERS =	1
TOWN:	74	TOTAL INSIDE METERS =	48

TOTAL NUMBER OF INSIDE METERS FOR DIVISION 12 = 491

TOTAL NUMBER OF INSIDE METERS COMPANY WIDE = 15,193

E N D O F R E P O R T

REPORT ID: PDS001R1  
PGM ID: PDS00100

MISSOURI GAS ENERGY  
INSIDE METER COUNTS

PROCESS DATE: 04/01/2014  
RUN DATE: 04/01/2014  
TIME: 07:45

DIVISION: 02  
TOWN: 01  
TOTAL INSIDE METERS = 225  
  
TOWN: 02  
TOTAL INSIDE METERS = 7  
  
TOWN: 04  
TOTAL INSIDE METERS = 1

TOTAL NUMBER OF INSIDE METERS FOR DIVISION 02 = 233

DIVISION: 03  
TOWN: 01  
TOTAL INSIDE METERS = 43  
  
TOWN: 02  
TOTAL INSIDE METERS = 1  
  
TOWN: 04  
TOTAL INSIDE METERS = 1  
  
TOWN: 05  
TOTAL INSIDE METERS = 4  
  
TOWN: 06  
TOTAL INSIDE METERS = 1  
  
TOWN: 09  
TOTAL INSIDE METERS = 1  
  
TOWN: 12  
TOTAL INSIDE METERS = 43  
  
TOWN: 15  
TOTAL INSIDE METERS = 1  
  
TOWN: 17  
TOTAL INSIDE METERS = 1  
  
TOWN: 18  
TOTAL INSIDE METERS = 1  
  
TOWN: 22  
TOTAL INSIDE METERS = 11  
  
TOWN: 24  
TOTAL INSIDE METERS = 2

TOTAL NUMBER OF INSIDE METERS FOR DIVISION 03 = 110

DIVISION: 04  
TOWN: 01  
TOTAL INSIDE METERS = 13,809  
  
TOWN: 02  
TOTAL INSIDE METERS = 1

TOTAL NUMBER OF INSIDE METERS FOR DIVISION 04 = 13,810

DIVISION: 05

TOWN: 01	TOTAL INSIDE METERS =	42
TOWN: 02	TOTAL INSIDE METERS =	2
TOWN: 03	TOTAL INSIDE METERS =	2
TOWN: 09	TOTAL INSIDE METERS =	13
TOWN: 51	TOTAL INSIDE METERS =	4

TOTAL NUMBER OF INSIDE METERS FOR DIVISION 05 = 63

DIVISION: 06

TOWN: 01	TOTAL INSIDE METERS =	44
TOWN: 09	TOTAL INSIDE METERS =	1

TOTAL NUMBER OF INSIDE METERS FOR DIVISION 06 = 45

DIVISION: 08

TOWN: 01	TOTAL INSIDE METERS =	2
TOWN: 09	TOTAL INSIDE METERS =	1

TOTAL NUMBER OF INSIDE METERS FOR DIVISION 08 = 3

DIVISION: 09

TOWN: 01	TOTAL INSIDE METERS =	31
TOWN: 02	TOTAL INSIDE METERS =	7
TOWN: 03	TOTAL INSIDE METERS =	11
TOWN: 04	TOTAL INSIDE METERS =	3
TOWN: 05	TOTAL INSIDE METERS =	16
TOWN: 06	TOTAL INSIDE METERS =	57
TOWN: 08	TOTAL INSIDE METERS =	1
TOWN: 09	TOTAL INSIDE METERS =	2
TOWN: 13	TOTAL INSIDE METERS =	1

TOWN: 24  
TOTAL INSIDE METERS = 1

TOWN: 25  
TOTAL INSIDE METERS = 2

TOWN: 26  
TOTAL INSIDE METERS = 1

TOWN: 27  
TOTAL INSIDE METERS = 4

TOWN: 28  
TOTAL INSIDE METERS = 2

TOWN: 31  
TOTAL INSIDE METERS = 4

TOWN: 32  
TOTAL INSIDE METERS = 19

TOTAL NUMBER OF INSIDE METERS FOR DIVISION 09 = 162

DIVISION: 10  
TOWN: 01  
TOTAL INSIDE METERS = 248

TOWN: 02  
TOTAL INSIDE METERS = 2

TOTAL NUMBER OF INSIDE METERS FOR DIVISION 10 = 250

DIVISION: 12  
TOWN: 02  
TOTAL INSIDE METERS = 4

TOWN: 03  
TOTAL INSIDE METERS = 3

TOWN: 05  
TOTAL INSIDE METERS = 2

TOWN: 07  
TOTAL INSIDE METERS = 72

TOWN: 13  
TOTAL INSIDE METERS = 8

TOWN: 15  
TOTAL INSIDE METERS = 8

TOWN: 16  
TOTAL INSIDE METERS = 4

TOWN: 17  
TOTAL INSIDE METERS = 3

TOWN: 19  
TOTAL INSIDE METERS = 17

TOWN: 22  
TOTAL INSIDE METERS = 1

TOWN: 27  
TOTAL INSIDE METERS = 3

TOWN:	29	TOTAL INSIDE METERS =	2
TOWN:	32	TOTAL INSIDE METERS =	2
TOWN:	33	TOTAL INSIDE METERS =	1
TOWN:	35	TOTAL INSIDE METERS =	1
TOWN:	36	TOTAL INSIDE METERS =	2
TOWN:	38	TOTAL INSIDE METERS =	5
TOWN:	39	TOTAL INSIDE METERS =	3
TOWN:	51	TOTAL INSIDE METERS =	54
TOWN:	57	TOTAL INSIDE METERS =	1
TOWN:	58	TOTAL INSIDE METERS =	2
TOWN:	60	TOTAL INSIDE METERS =	9
TOWN:	61	TOTAL INSIDE METERS =	9
TOWN:	67	TOTAL INSIDE METERS =	4
TOWN:	71	TOTAL INSIDE METERS =	103
TOWN:	72	TOTAL INSIDE METERS =	113
TOWN:	73	TOTAL INSIDE METERS =	1
TOWN:	74	TOTAL INSIDE METERS =	48

TOTAL NUMBER OF INSIDE METERS FOR DIVISION 12 = 485

TOTAL NUMBER OF INSIDE METERS COMPANY WIDE = 15,161  
 E N D O F R E P O R T

REPORT ID: PDS001R1  
PGM ID: PDS00100

MISSOURI GAS ENERGY  
INSIDE METER COUNTS

PROCESS DATE: 05/01/2014  
RUN DATE: 05/01/2014  
TIME: 07:45

DIVISION: 02  
TOWN: 01  
TOTAL INSIDE METERS = 223  
  
TOWN: 02  
TOTAL INSIDE METERS = 6  
  
TOWN: 04  
TOTAL INSIDE METERS = 1  
.....  
TOTAL NUMBER OF INSIDE METERS FOR DIVISION 02 = 230

DIVISION: 03  
TOWN: 01  
TOTAL INSIDE METERS = 43  
  
TOWN: 02  
TOTAL INSIDE METERS = 1  
  
TOWN: 04  
TOTAL INSIDE METERS = 1  
  
TOWN: 05  
TOTAL INSIDE METERS = 4  
  
TOWN: 06  
TOTAL INSIDE METERS = 1  
  
TOWN: 09  
TOTAL INSIDE METERS = 1  
  
TOWN: 12  
TOTAL INSIDE METERS = 43  
  
TOWN: 15  
TOTAL INSIDE METERS = 1  
  
TOWN: 17  
TOTAL INSIDE METERS = 1  
  
TOWN: 18  
TOTAL INSIDE METERS = 1  
  
TOWN: 22  
TOTAL INSIDE METERS = 11  
  
TOWN: 24  
TOTAL INSIDE METERS = 2  
  
TOTAL NUMBER OF INSIDE METERS FOR DIVISION 03 = 110

DIVISION: 04  
TOWN: 01  
TOTAL INSIDE METERS = 13,702  
  
TOWN: 02  
TOTAL INSIDE METERS = 1  
  
TOTAL NUMBER OF INSIDE METERS FOR DIVISION 04 = 13,703



DIVISION: 05  
TOWN: 01  
TOTAL INSIDE METERS = 42  
TOWN: 02  
TOTAL INSIDE METERS = 2  
TOWN: 03  
TOTAL INSIDE METERS = 2  
TOWN: 09  
TOTAL INSIDE METERS = 13  
TOWN: 51  
TOTAL INSIDE METERS = 4  
TOTAL NUMBER OF INSIDE METERS FOR DIVISION 05 = 63

DIVISION: 06  
TOWN: 01  
TOTAL INSIDE METERS = 44  
TOWN: 09  
TOTAL INSIDE METERS = 1  
TOTAL NUMBER OF INSIDE METERS FOR DIVISION 06 = 45

DIVISION: 08  
TOWN: 01  
TOTAL INSIDE METERS = 2  
TOWN: 09  
TOTAL INSIDE METERS = 1  
TOTAL NUMBER OF INSIDE METERS FOR DIVISION 08 = 3

DIVISION: 09  
TOWN: 01  
TOTAL INSIDE METERS = 31  
TOWN: 02  
TOTAL INSIDE METERS = 7  
TOWN: 03  
TOTAL INSIDE METERS = 11  
TOWN: 04  
TOTAL INSIDE METERS = 3  
TOWN: 05  
TOTAL INSIDE METERS = 15  
TOWN: 06  
TOTAL INSIDE METERS = 57  
TOWN: 08  
TOTAL INSIDE METERS = 1  
TOWN: 09  
TOTAL INSIDE METERS = 2  
TOWN: 13  
TOTAL INSIDE METERS = 1

TOWN: 24  
TOTAL INSIDE METERS = 1

TOWN: 25  
TOTAL INSIDE METERS = 2

TOWN: 26  
TOTAL INSIDE METERS = 1

TOWN: 27  
TOTAL INSIDE METERS = 4

TOWN: 28  
TOTAL INSIDE METERS = 2

TOWN: 31  
TOTAL INSIDE METERS = 4

TOWN: 32  
TOTAL INSIDE METERS = 18

TOTAL NUMBER OF INSIDE METERS FOR DIVISION 09 = 160

DIVISION: 10  
TOWN: 01  
TOTAL INSIDE METERS = 248

TOWN: 02  
TOTAL INSIDE METERS = 2

TOTAL NUMBER OF INSIDE METERS FOR DIVISION 10 = 250

DIVISION: 12  
TOWN: 02  
TOTAL INSIDE METERS = 4

TOWN: 03  
TOTAL INSIDE METERS = 3

TOWN: 05  
TOTAL INSIDE METERS = 2

TOWN: 07  
TOTAL INSIDE METERS = 70

TOWN: 13  
TOTAL INSIDE METERS = 8

TOWN: 15  
TOTAL INSIDE METERS = 8

TOWN: 16  
TOTAL INSIDE METERS = 4

TOWN: 17  
TOTAL INSIDE METERS = 2

TOWN: 19  
TOTAL INSIDE METERS = 17

TOWN: 22  
TOTAL INSIDE METERS = 1

TOWN:	27	TOTAL INSIDE METERS =	3
TOWN:	29	TOTAL INSIDE METERS =	2
TOWN:	32	TOTAL INSIDE METERS =	2
TOWN:	33	TOTAL INSIDE METERS =	1
TOWN:	35	TOTAL INSIDE METERS =	1
TOWN:	36	TOTAL INSIDE METERS =	2
TOWN:	38	TOTAL INSIDE METERS =	5
TOWN:	39	TOTAL INSIDE METERS =	3
TOWN:	51	TOTAL INSIDE METERS =	53
TOWN:	57	TOTAL INSIDE METERS =	1
TOWN:	58	TOTAL INSIDE METERS =	2
TOWN:	60	TOTAL INSIDE METERS =	9
TOWN:	61	TOTAL INSIDE METERS =	9
TOWN:	67	TOTAL INSIDE METERS =	4
TOWN:	71	TOTAL INSIDE METERS =	120
TOWN:	72	TOTAL INSIDE METERS =	113
TOWN:	73	TOTAL INSIDE METERS =	1
TOWN:	74	TOTAL INSIDE METERS =	48

TOTAL NUMBER OF INSIDE METERS FOR DIVISION 12 = 498

TOTAL NUMBER OF INSIDE METERS COMPANY WIDE = 15,062

E N D O F R E P O R T

REPORT ID: PDS001R1  
PGM ID: PDS00100

MISSOURI GAS ENERGY  
INSIDE METER COUNTS

PROCESS DATE: 06/01/2014  
RUN DATE: 06/01/2014  
TIME: 07:45

DIVISION: 02  
TOWN: 01  
TOTAL INSIDE METERS = 224  
  
TOWN: 02  
TOTAL INSIDE METERS = 6  
  
TOWN: 04  
TOTAL INSIDE METERS = 1

TOTAL NUMBER OF INSIDE METERS FOR DIVISION 02 = 231

DIVISION: 03  
TOWN: 01  
TOTAL INSIDE METERS = 43  
  
TOWN: 02  
TOTAL INSIDE METERS = 1  
  
TOWN: 04  
TOTAL INSIDE METERS = 1  
  
TOWN: 05  
TOTAL INSIDE METERS = 4  
  
TOWN: 06  
TOTAL INSIDE METERS = 1  
  
TOWN: 09  
TOTAL INSIDE METERS = 1  
  
TOWN: 12  
TOTAL INSIDE METERS = 44  
  
TOWN: 15  
TOTAL INSIDE METERS = 1  
  
TOWN: 17  
TOTAL INSIDE METERS = 1  
  
TOWN: 18  
TOTAL INSIDE METERS = 1  
  
TOWN: 22  
TOTAL INSIDE METERS = 11  
  
TOWN: 24  
TOTAL INSIDE METERS = 2

TOTAL NUMBER OF INSIDE METERS FOR DIVISION 03 = 111

DIVISION: 04  
TOWN: 01  
TOTAL INSIDE METERS = 13,638  
  
TOWN: 02  
TOTAL INSIDE METERS = 1

TOTAL NUMBER OF INSIDE METERS FOR DIVISION 04 = 13,639

DIVISION: 05  
TOWN: 01  
TOTAL INSIDE METERS = 42  
TOWN: 02  
TOTAL INSIDE METERS = 3  
TOWN: 03  
TOTAL INSIDE METERS = 2  
TOWN: 09  
TOTAL INSIDE METERS = 13  
TOWN: 51  
TOTAL INSIDE METERS = 4  
.....  
TOTAL NUMBER OF INSIDE METERS FOR DIVISION 05 = 64

DIVISION: 06  
TOWN: 01  
TOTAL INSIDE METERS = 44  
TOWN: 09  
TOTAL INSIDE METERS = 1  
TOTAL NUMBER OF INSIDE METERS FOR DIVISION 06 = 45

DIVISION: 08  
TOWN: 01  
TOTAL INSIDE METERS = 2  
TOWN: 09  
TOTAL INSIDE METERS = 1  
TOTAL NUMBER OF INSIDE METERS FOR DIVISION 08 = 3

DIVISION: 09  
TOWN: 01  
TOTAL INSIDE METERS = 29  
TOWN: 02  
TOTAL INSIDE METERS = 7  
TOWN: 03  
TOTAL INSIDE METERS = 10  
TOWN: 04  
TOTAL INSIDE METERS = 3  
TOWN: 05  
TOTAL INSIDE METERS = 15  
TOWN: 06  
TOTAL INSIDE METERS = 57  
TOWN: 08  
TOTAL INSIDE METERS = 1  
TOWN: 09  
TOTAL INSIDE METERS = 2  
TOWN: 13  
TOTAL INSIDE METERS = 1

TOWN: 24  
TOTAL INSIDE METERS = 1

TOWN: 25  
TOTAL INSIDE METERS = 2

TOWN: 26  
TOTAL INSIDE METERS = 1

TOWN: 27  
TOTAL INSIDE METERS = 4

TOWN: 28  
TOTAL INSIDE METERS = 2

TOWN: 31  
TOTAL INSIDE METERS = 4

TOWN: 32  
TOTAL INSIDE METERS = 18

TOTAL NUMBER OF INSIDE METERS FOR DIVISION 09 = 157

DIVISION: 10  
TOWN: 01  
TOTAL INSIDE METERS = 248

TOWN: 02  
TOTAL INSIDE METERS = 2

TOTAL NUMBER OF INSIDE METERS FOR DIVISION 10 = 250

DIVISION: 12  
TOWN: 02  
TOTAL INSIDE METERS = 4

TOWN: 03  
TOTAL INSIDE METERS = 3

TOWN: 05  
TOTAL INSIDE METERS = 2

TOWN: 07  
TOTAL INSIDE METERS = 70

TOWN: 13  
TOTAL INSIDE METERS = 8

TOWN: 15  
TOTAL INSIDE METERS = 8

TOWN: 16  
TOTAL INSIDE METERS = 4

TOWN: 17  
TOTAL INSIDE METERS = 2

TOWN: 19  
TOTAL INSIDE METERS = 16

TOWN: 22  
TOTAL INSIDE METERS = 1

TOWN: 27  
TOTAL INSIDE METERS = 3

TOWN:	29	TOTAL INSIDE METERS =	2
TOWN:	32	TOTAL INSIDE METERS =	2
TOWN:	33	TOTAL INSIDE METERS =	1
TOWN:	35	TOTAL INSIDE METERS =	1
TOWN:	36	TOTAL INSIDE METERS =	2
TOWN:	38	TOTAL INSIDE METERS =	5
TOWN:	39	TOTAL INSIDE METERS =	3
TOWN:	51	TOTAL INSIDE METERS =	53
TOWN:	57	TOTAL INSIDE METERS =	1
TOWN:	58	TOTAL INSIDE METERS =	2
TOWN:	60	TOTAL INSIDE METERS =	9
TOWN:	61	TOTAL INSIDE METERS =	9
TOWN:	67	TOTAL INSIDE METERS =	4
TOWN:	71	TOTAL INSIDE METERS =	119
TOWN:	72	TOTAL INSIDE METERS =	111
TOWN:	73	TOTAL INSIDE METERS =	1
TOWN:	74	TOTAL INSIDE METERS =	48

TOTAL NUMBER OF INSIDE METERS FOR DIVISION 12 = 494

TOTAL NUMBER OF INSIDE METERS COMPANY WIDE = 14,994

E N D O F R E P O R T

REPORT ID: PDS001R1  
PGM ID: PDS00100

MISSOURI GAS ENERGY  
INSIDE METER COUNTS

PROCESS DATE: 07/01/2014  
RUN DATE: 07/01/2014  
TIME: 07:45

DIVISION: 02

TOWN: 01  
TOTAL INSIDE METERS = 224

TOWN: 02  
TOTAL INSIDE METERS = 6

TOWN: 04  
TOTAL INSIDE METERS = 1

TOTAL NUMBER OF INSIDE METERS FOR DIVISION 02 = 231

DIVISION: 03

TOWN: 01  
TOTAL INSIDE METERS = 43

TOWN: 02  
TOTAL INSIDE METERS = 1

TOWN: 04  
TOTAL INSIDE METERS = 1

TOWN: 05  
TOTAL INSIDE METERS = 4

TOWN: 06  
TOTAL INSIDE METERS = 1

TOWN: 09  
TOTAL INSIDE METERS = 1

TOWN: 12  
TOTAL INSIDE METERS = 44

TOWN: 15  
TOTAL INSIDE METERS = 1

TOWN: 17  
TOTAL INSIDE METERS = 1

TOWN: 18  
TOTAL INSIDE METERS = 1

TOWN: 22  
TOTAL INSIDE METERS = 11

TOWN: 24  
TOTAL INSIDE METERS = 2

TOTAL NUMBER OF INSIDE METERS FOR DIVISION 03 = 111

DIVISION: 04

TOWN: 01  
TOTAL INSIDE METERS = 13,501

TOWN: 02  
TOTAL INSIDE METERS = 1

TOTAL NUMBER OF INSIDE METERS FOR DIVISION 04 = 13,502



DIVISION: 05  
TOWN: 01  
TOTAL INSIDE METERS = 42  
  
TOWN: 02  
TOTAL INSIDE METERS = 3  
  
TOWN: 03  
TOTAL INSIDE METERS = 2  
  
TOWN: 09  
TOTAL INSIDE METERS = 13  
  
TOWN: 51  
TOTAL INSIDE METERS = 4

TOTAL NUMBER OF INSIDE METERS FOR DIVISION 05 = 64

DIVISION: 06  
TOWN: 01  
TOTAL INSIDE METERS = 44  
  
TOWN: 09  
TOTAL INSIDE METERS = 1

TOTAL NUMBER OF INSIDE METERS FOR DIVISION 06 = 45

DIVISION: 08  
TOWN: 01  
TOTAL INSIDE METERS = 2  
  
TOWN: 09  
TOTAL INSIDE METERS = 1

TOTAL NUMBER OF INSIDE METERS FOR DIVISION 08 = 3

DIVISION: 09  
TOWN: 01  
TOTAL INSIDE METERS = 29  
  
TOWN: 02  
TOTAL INSIDE METERS = 7  
  
TOWN: 03  
TOTAL INSIDE METERS = 10  
  
TOWN: 04  
TOTAL INSIDE METERS = 3  
  
TOWN: 05  
TOTAL INSIDE METERS = 15  
  
TOWN: 06  
TOTAL INSIDE METERS = 57  
  
TOWN: 08  
TOTAL INSIDE METERS = 1  
  
TOWN: 09  
TOTAL INSIDE METERS = 2  
  
TOWN: 13  
TOTAL INSIDE METERS = 1

TOWN: 24  
TOTAL INSIDE METERS = 1

TOWN: 25  
TOTAL INSIDE METERS = 2

TOWN: 26  
TOTAL INSIDE METERS = 1

TOWN: 27  
TOTAL INSIDE METERS = 4

TOWN: 28  
TOTAL INSIDE METERS = 2

TOWN: 31  
TOTAL INSIDE METERS = 4

TOWN: 32  
TOTAL INSIDE METERS = 18

TOTAL NUMBER OF INSIDE METERS FOR DIVISION 09 = 157

DIVISION: 10  
TOWN: 01  
TOTAL INSIDE METERS = 248

TOWN: 02  
TOTAL INSIDE METERS = 2

TOTAL NUMBER OF INSIDE METERS FOR DIVISION 10 = 250

DIVISION: 12  
TOWN: 02  
TOTAL INSIDE METERS = 4

TOWN: 03  
TOTAL INSIDE METERS = 3

TOWN: 05  
TOTAL INSIDE METERS = 2

TOWN: 07  
TOTAL INSIDE METERS = 70

TOWN: 13  
TOTAL INSIDE METERS = 8

TOWN: 15  
TOTAL INSIDE METERS = 8

TOWN: 16  
TOTAL INSIDE METERS = 4

TOWN: 17  
TOTAL INSIDE METERS = 2

TOWN: 19  
TOTAL INSIDE METERS = 16

TOWN: 22  
TOTAL INSIDE METERS = 1

TOWN: 27  
TOTAL INSIDE METERS = 3

TOWN:	29	TOTAL INSIDE METERS =	2
TOWN:	32	TOTAL INSIDE METERS =	2
TOWN:	33	TOTAL INSIDE METERS =	1
TOWN:	35	TOTAL INSIDE METERS =	1
TOWN:	36	TOTAL INSIDE METERS =	2
TOWN:	38	TOTAL INSIDE METERS =	5
TOWN:	39	TOTAL INSIDE METERS =	3
TOWN:	51	TOTAL INSIDE METERS =	53
TOWN:	57	TOTAL INSIDE METERS =	1
TOWN:	58	TOTAL INSIDE METERS =	2
TOWN:	60	TOTAL INSIDE METERS =	9
TOWN:	61	TOTAL INSIDE METERS =	9
TOWN:	67	TOTAL INSIDE METERS =	4
TOWN:	71	TOTAL INSIDE METERS =	87
TOWN:	72	TOTAL INSIDE METERS =	112
TOWN:	73	TOTAL INSIDE METERS =	1
TOWN:	74	TOTAL INSIDE METERS =	48

TOTAL NUMBER OF INSIDE METERS FOR DIVISION 12 = 463

TOTAL NUMBER OF INSIDE METERS COMPANY WIDE = 14,826  
 E N D O F R E P O R T

REPORT ID: PDS001R1  
PGM ID: PDS00100

MISSOURI GAS ENERGY  
INSIDE METER COUNTS

PROCESS DATE: 08/01/2014  
RUN DATE: 08/01/2014  
TIME: 07:45

DIVISION: 02  
TOWN: 01  
TOTAL INSIDE METERS = 221  
  
TOWN: 02  
TOTAL INSIDE METERS = 6  
  
TOWN: 04  
TOTAL INSIDE METERS = 1

TOTAL NUMBER OF INSIDE METERS FOR DIVISION 02 = 228

DIVISION: 03  
TOWN: 01  
TOTAL INSIDE METERS = 43  
  
TOWN: 02  
TOTAL INSIDE METERS = 1  
  
TOWN: 04  
TOTAL INSIDE METERS = 1  
  
TOWN: 05  
TOTAL INSIDE METERS = 4  
  
TOWN: 06  
TOTAL INSIDE METERS = 1  
  
TOWN: 09  
TOTAL INSIDE METERS = 1  
  
TOWN: 12  
TOTAL INSIDE METERS = 44  
  
TOWN: 15  
TOTAL INSIDE METERS = 1  
  
TOWN: 17  
TOTAL INSIDE METERS = 1  
  
TOWN: 18  
TOTAL INSIDE METERS = 1  
  
TOWN: 22  
TOTAL INSIDE METERS = 11  
  
TOWN: 24  
TOTAL INSIDE METERS = 2

TOTAL NUMBER OF INSIDE METERS FOR DIVISION 03 = 111

DIVISION: 04  
TOWN: 01  
TOTAL INSIDE METERS = 13,402  
  
TOWN: 02  
TOTAL INSIDE METERS = 1

TOTAL NUMBER OF INSIDE METERS FOR DIVISION 04 = 13,403

DIVISION: 05  
TOWN: 01  
TOTAL INSIDE METERS = 42  
  
TOWN: 02  
TOTAL INSIDE METERS = 3  
  
TOWN: 03  
TOTAL INSIDE METERS = 2  
  
TOWN: 09  
TOTAL INSIDE METERS = 13  
  
TOWN: 51  
TOTAL INSIDE METERS = 4

TOTAL NUMBER OF INSIDE METERS FOR DIVISION 05 = 64

DIVISION: 06  
TOWN: 01  
TOTAL INSIDE METERS = 44  
  
TOWN: 09  
TOTAL INSIDE METERS = 1

TOTAL NUMBER OF INSIDE METERS FOR DIVISION 06 = 45

DIVISION: 08  
TOWN: 01  
TOTAL INSIDE METERS = 2  
  
TOWN: 09  
TOTAL INSIDE METERS = 1

TOTAL NUMBER OF INSIDE METERS FOR DIVISION 08 = 3

DIVISION: 09  
TOWN: 01  
TOTAL INSIDE METERS = 29  
  
TOWN: 02  
TOTAL INSIDE METERS = 7  
  
TOWN: 03  
TOTAL INSIDE METERS = 10  
  
TOWN: 04  
TOTAL INSIDE METERS = 3  
  
TOWN: 05  
TOTAL INSIDE METERS = 15  
  
TOWN: 06  
TOTAL INSIDE METERS = 56  
  
TOWN: 08  
TOTAL INSIDE METERS = 1  
  
TOWN: 09  
TOTAL INSIDE METERS = 2  
  
TOWN: 13  
TOTAL INSIDE METERS = 1  
  
TOWN: 24  
TOTAL INSIDE METERS = 1

TOWN: 25  
TOTAL INSIDE METERS = 2

TOWN: 26  
TOTAL INSIDE METERS = 1

TOWN: 27  
TOTAL INSIDE METERS = 4

TOWN: 28  
TOTAL INSIDE METERS = 2

TOWN: 31  
TOTAL INSIDE METERS = 4

TOWN: 32  
TOTAL INSIDE METERS = 18

---

TOTAL NUMBER OF INSIDE METERS FOR DIVISION 09 = 156

DIVISION: 10

TOWN: 01  
TOTAL INSIDE METERS = 248

TOWN: 02  
TOTAL INSIDE METERS = 2

TOTAL NUMBER OF INSIDE METERS FOR DIVISION 10 = 250

DIVISION: 12

TOWN: 02  
TOTAL INSIDE METERS = 4

TOWN: 03  
TOTAL INSIDE METERS = 3

TOWN: 05  
TOTAL INSIDE METERS = 2

TOWN: 07  
TOTAL INSIDE METERS = 70

TOWN: 13  
TOTAL INSIDE METERS = 8

TOWN: 15  
TOTAL INSIDE METERS = 7

TOWN: 16  
TOTAL INSIDE METERS = 4

TOWN: 17  
TOTAL INSIDE METERS = 2

TOWN: 19  
TOTAL INSIDE METERS = 16

TOWN: 22  
TOTAL INSIDE METERS = 1

TOWN: 27  
TOTAL INSIDE METERS = 3

TOWN: 29  
TOTAL INSIDE METERS = 2

TOWN: 32  
TOTAL INSIDE METERS = 2

TOWN:	33	TOTAL INSIDE METERS =	1
TOWN:	35	TOTAL INSIDE METERS =	1
TOWN:	36	TOTAL INSIDE METERS =	2
TOWN:	38	TOTAL INSIDE METERS =	5
TOWN:	39	TOTAL INSIDE METERS =	3
TOWN:	51	TOTAL INSIDE METERS =	54
-----			
TOWN:	57	TOTAL INSIDE METERS =	1
TOWN:	58	TOTAL INSIDE METERS =	2
TOWN:	60	TOTAL INSIDE METERS =	9
TOWN:	61	TOTAL INSIDE METERS =	9
TOWN:	67	TOTAL INSIDE METERS =	4
TOWN:	71	TOTAL INSIDE METERS =	86
TOWN:	72	TOTAL INSIDE METERS =	111
TOWN:	73	TOTAL INSIDE METERS =	1
TOWN:	74	TOTAL INSIDE METERS =	48

TOTAL NUMBER OF INSIDE METERS FOR DIVISION 12 = 461

TOTAL NUMBER OF INSIDE METERS COMPANY WIDE = 14,721

E N D O F R E P O R T

REPORT ID: PDS001R1  
PGM ID: PDS00100

MISSOURI GAS ENERGY  
INSIDE METER COUNTS

PROCESS DATE: 09/01/2014  
RUN DATE: 09/01/2014  
TIME: 07:45

DIVISION: 02  
TOWN: 01  
TOTAL INSIDE METERS = 220  
  
TOWN: 02  
TOTAL INSIDE METERS = 6  
  
TOWN: 04  
TOTAL INSIDE METERS = 1  
  
TOTAL NUMBER OF INSIDE METERS FOR DIVISION 02 = 227

.....  
DIVISION: 03  
TOWN: 01  
TOTAL INSIDE METERS = 43  
  
TOWN: 02  
TOTAL INSIDE METERS = 1  
  
TOWN: 04  
TOTAL INSIDE METERS = 1  
  
TOWN: 05  
TOTAL INSIDE METERS = 4  
  
TOWN: 06  
TOTAL INSIDE METERS = 1  
  
TOWN: 09  
TOTAL INSIDE METERS = 1  
  
TOWN: 12  
TOTAL INSIDE METERS = 44  
  
TOWN: 15  
TOTAL INSIDE METERS = 1  
  
TOWN: 17  
TOTAL INSIDE METERS = 1  
  
TOWN: 18  
TOTAL INSIDE METERS = 1  
  
TOWN: 22  
TOTAL INSIDE METERS = 11  
  
TOWN: 24  
TOTAL INSIDE METERS = 2  
  
TOTAL NUMBER OF INSIDE METERS FOR DIVISION 03 = 111

DIVISION: 04  
TOWN: 01  
TOTAL INSIDE METERS = 13,249  
  
TOWN: 02  
TOTAL INSIDE METERS = 1  
  
TOTAL NUMBER OF INSIDE METERS FOR DIVISION 04 = 13,250



DIVISION: 05  
TOWN: 01  
TOTAL INSIDE METERS = 42

TOWN: 02  
TOTAL INSIDE METERS = 3

TOWN: 03  
TOTAL INSIDE METERS = 2

TOWN: 09  
TOTAL INSIDE METERS = 13

TOWN: 51  
TOTAL INSIDE METERS = 4

TOTAL NUMBER OF INSIDE METERS FOR DIVISION 05 = 64

DIVISION: 06  
TOWN: 01  
TOTAL INSIDE METERS = 44

TOWN: 09  
TOTAL INSIDE METERS = 1

TOTAL NUMBER OF INSIDE METERS FOR DIVISION 06 = 45

DIVISION: 08  
TOWN: 01  
TOTAL INSIDE METERS = 2

TOWN: 09  
TOTAL INSIDE METERS = 1

TOTAL NUMBER OF INSIDE METERS FOR DIVISION 08 = 3

DIVISION: 09  
TOWN: 01  
TOTAL INSIDE METERS = 29

TOWN: 02  
TOTAL INSIDE METERS = 7

TOWN: 03  
TOTAL INSIDE METERS = 10

TOWN: 04  
TOTAL INSIDE METERS = 3

TOWN: 05  
TOTAL INSIDE METERS = 15

TOWN: 06  
TOTAL INSIDE METERS = 56

TOWN: 08  
TOTAL INSIDE METERS = 1

TOWN: 09  
TOTAL INSIDE METERS = 2

TOWN: 13  
TOTAL INSIDE METERS = 1

TOWN: 24  
TOTAL INSIDE METERS = 1

TOWN: 25  
TOTAL INSIDE METERS = 2

TOWN: 26  
TOTAL INSIDE METERS = 1

TOWN: 27  
TOTAL INSIDE METERS = 4

TOWN: 28  
TOTAL INSIDE METERS = 2

TOWN: 31  
TOTAL INSIDE METERS = 4

TOWN: 32  
TOTAL INSIDE METERS = 18

TOTAL NUMBER OF INSIDE METERS FOR DIVISION 09 = 156

DIVISION: 10

TOWN: 01  
TOTAL INSIDE METERS = 249

TOWN: 02  
TOTAL INSIDE METERS = 2

TOTAL NUMBER OF INSIDE METERS FOR DIVISION 10 = 251

DIVISION: 12

TOWN: 02  
TOTAL INSIDE METERS = 4

TOWN: 03  
TOTAL INSIDE METERS = 3

TOWN: 05  
TOTAL INSIDE METERS = 2

TOWN: 07  
TOTAL INSIDE METERS = 70

TOWN: 13  
TOTAL INSIDE METERS = 8

TOWN: 15  
TOTAL INSIDE METERS = 7

TOWN: 16  
TOTAL INSIDE METERS = 4

TOWN: 17  
TOTAL INSIDE METERS = 2

TOWN: 19  
TOTAL INSIDE METERS = 16

TOWN: 22  
TOTAL INSIDE METERS = 1

TOWN: 27  
TOTAL INSIDE METERS = 3

TOWN: 29  
TOTAL INSIDE METERS = 2

TOWN: 32  
TOTAL INSIDE METERS = 2

TOWN:	33	TOTAL INSIDE METERS =	1
TOWN:	35	TOTAL INSIDE METERS =	1
TOWN:	36	TOTAL INSIDE METERS =	2
TOWN:	38	TOTAL INSIDE METERS =	5
TOWN:	39	TOTAL INSIDE METERS =	3
TOWN:	51	TOTAL INSIDE METERS =	53
TOWN:	57	TOTAL INSIDE METERS =	1
TOWN:	58	TOTAL INSIDE METERS =	2
TOWN:	60	TOTAL INSIDE METERS =	18
TOWN:	61	TOTAL INSIDE METERS =	9
TOWN:	67	TOTAL INSIDE METERS =	4
TOWN:	71	TOTAL INSIDE METERS =	82
TOWN:	72	TOTAL INSIDE METERS =	110
TOWN:	73	TOTAL INSIDE METERS =	1
TOWN:	74	TOTAL INSIDE METERS =	48

TOTAL NUMBER OF INSIDE METERS FOR DIVISION 12 = 464

TOTAL NUMBER OF INSIDE METERS COMPANY WIDE = 14,571  
 E N D O F R E P O R T

REPORT ID: PDS001R1  
PGM ID: PDS00100

MISSOURI GAS ENERGY  
INSIDE METER COUNTS

PROCESS DATE: 10/01/2014  
RUN DATE: 10/01/2014  
TIME: 07:45

DIVISION: 02  
TOWN: 01  
TOTAL INSIDE METERS = 220  
  
TOWN: 02  
TOTAL INSIDE METERS = 6  
  
TOWN: 04  
TOTAL INSIDE METERS = 1

TOTAL NUMBER OF INSIDE METERS FOR DIVISION 02 = 227

DIVISION: 03  
TOWN: 01  
TOTAL INSIDE METERS = 43  
  
TOWN: 02  
TOTAL INSIDE METERS = 1  
  
TOWN: 04  
TOTAL INSIDE METERS = 1  
  
TOWN: 05  
TOTAL INSIDE METERS = 4  
  
TOWN: 06  
TOTAL INSIDE METERS = 1  
  
TOWN: 09  
TOTAL INSIDE METERS = 1  
  
TOWN: 12  
TOTAL INSIDE METERS = 44  
  
TOWN: 15  
TOTAL INSIDE METERS = 1  
  
TOWN: 17  
TOTAL INSIDE METERS = 1  
  
TOWN: 18  
TOTAL INSIDE METERS = 1  
  
TOWN: 22  
TOTAL INSIDE METERS = 11  
  
TOWN: 24  
TOTAL INSIDE METERS = 2

TOTAL NUMBER OF INSIDE METERS FOR DIVISION 03 = 111

DIVISION: 04  
TOWN: 01  
TOTAL INSIDE METERS = 13,063  
  
TOWN: 02  
TOTAL INSIDE METERS = 1

TOTAL NUMBER OF INSIDE METERS FOR DIVISION 04 = 13,064

DIVISION: 05  
TOWN: 01  
TOTAL INSIDE METERS = 42  
  
TOWN: 02  
TOTAL INSIDE METERS = 3  
  
TOWN: 03  
TOTAL INSIDE METERS = 2  
  
TOWN: 09  
TOTAL INSIDE METERS = 13  
  
TOWN: 51  
TOTAL INSIDE METERS = 4

TOTAL NUMBER OF INSIDE METERS FOR DIVISION 05 = 64

DIVISION: 06  
TOWN: 01  
TOTAL INSIDE METERS = 44  
  
TOWN: 09  
TOTAL INSIDE METERS = 1

TOTAL NUMBER OF INSIDE METERS FOR DIVISION 06 = 45

DIVISION: 08  
TOWN: 01  
TOTAL INSIDE METERS = 2  
  
TOWN: 09  
TOTAL INSIDE METERS = 1

TOTAL NUMBER OF INSIDE METERS FOR DIVISION 08 = 3

DIVISION: 09  
TOWN: 01  
TOTAL INSIDE METERS = 29  
  
TOWN: 02  
TOTAL INSIDE METERS = 7  
  
TOWN: 03  
TOTAL INSIDE METERS = 10  
  
TOWN: 04  
TOTAL INSIDE METERS = 2  
  
TOWN: 05  
TOTAL INSIDE METERS = 15  
  
TOWN: 06  
TOTAL INSIDE METERS = 56  
  
TOWN: 08  
TOTAL INSIDE METERS = 1  
  
TOWN: 09  
TOTAL INSIDE METERS = 2  
  
TOWN: 13  
TOTAL INSIDE METERS = 1

TOWN: 24  
TOTAL INSIDE METERS = 1

TOWN: 25  
TOTAL INSIDE METERS = 2

TOWN: 26  
TOTAL INSIDE METERS = 1

TOWN: 27  
TOTAL INSIDE METERS = 4

TOWN: 28  
TOTAL INSIDE METERS = 2

TOWN: 31  
TOTAL INSIDE METERS = 4

TOWN: 32  
TOTAL INSIDE METERS = 18

TOTAL NUMBER OF INSIDE METERS FOR DIVISION 09 = 155

DIVISION: 10  
TOWN: 01  
TOTAL INSIDE METERS = 248

TOWN: 02  
TOTAL INSIDE METERS = 2

TOTAL NUMBER OF INSIDE METERS FOR DIVISION 10 = 250

DIVISION: 12  
TOWN: 02  
TOTAL INSIDE METERS = 4

TOWN: 03  
TOTAL INSIDE METERS = 3

TOWN: 05  
TOTAL INSIDE METERS = 2

TOWN: 07  
TOTAL INSIDE METERS = 70

TOWN: 13  
TOTAL INSIDE METERS = 8

TOWN: 15  
TOTAL INSIDE METERS = 7

TOWN: 16  
TOTAL INSIDE METERS = 4

TOWN: 17  
TOTAL INSIDE METERS = 2

TOWN: 19  
TOTAL INSIDE METERS = 16

TOWN: 22  
TOTAL INSIDE METERS = 1

TOWN: 27  
TOTAL INSIDE METERS = 3

TOWN:	29	TOTAL INSIDE METERS =	2
TOWN:	32	TOTAL INSIDE METERS =	2
TOWN:	33	TOTAL INSIDE METERS =	1
TOWN:	35	TOTAL INSIDE METERS =	1
TOWN:	36	TOTAL INSIDE METERS =	2
TOWN:	38	TOTAL INSIDE METERS =	5
TOWN:	39	TOTAL INSIDE METERS =	3
TOWN:	51	TOTAL INSIDE METERS =	52
TOWN:	57	TOTAL INSIDE METERS =	1
TOWN:	58	TOTAL INSIDE METERS =	1
TOWN:	60	TOTAL INSIDE METERS =	18
TOWN:	61	TOTAL INSIDE METERS =	9
TOWN:	67	TOTAL INSIDE METERS =	4
TOWN:	71	TOTAL INSIDE METERS =	80
TOWN:	72	TOTAL INSIDE METERS =	110
TOWN:	73	TOTAL INSIDE METERS =	1
TOWN:	74	TOTAL INSIDE METERS =	47

TOTAL NUMBER OF INSIDE METERS FOR DIVISION 12 = 459

TOTAL NUMBER OF INSIDE METERS COMPANY WIDE = 14,378  
 E N D O F R E P O R T

REPORT ID: PDS001R1  
PGM ID: PDS00100

MISSOURI GAS ENERGY  
INSIDE METER COUNTS

PROCESS DATE: 11/01/2014  
RUN DATE: 11/01/2014  
TIME: 07:45

DIVISION: 02  
TOWN: 01  
TOTAL INSIDE METERS = 191  
  
TOWN: 02  
TOTAL INSIDE METERS = 6  
  
TOWN: 04  
TOTAL INSIDE METERS = 1

TOTAL NUMBER OF INSIDE METERS FOR DIVISION 02 = 198

DIVISION: 03  
TOWN: 01  
TOTAL INSIDE METERS = 43  
  
TOWN: 02  
TOTAL INSIDE METERS = 1  
  
TOWN: 04  
TOTAL INSIDE METERS = 1  
  
TOWN: 05  
TOTAL INSIDE METERS = 4  
  
TOWN: 06  
TOTAL INSIDE METERS = 1  
  
TOWN: 09  
TOTAL INSIDE METERS = 1  
  
TOWN: 12  
TOTAL INSIDE METERS = 44  
  
TOWN: 15  
TOTAL INSIDE METERS = 1  
  
TOWN: 17  
TOTAL INSIDE METERS = 1  
  
TOWN: 18  
TOTAL INSIDE METERS = 1  
  
TOWN: 22  
TOTAL INSIDE METERS = 11  
  
TOWN: 24  
TOTAL INSIDE METERS = 2

TOTAL NUMBER OF INSIDE METERS FOR DIVISION 03 = 111

DIVISION: 04  
TOWN: 01  
TOTAL INSIDE METERS = 12,940  
  
TOWN: 02  
TOTAL INSIDE METERS = 1

TOTAL NUMBER OF INSIDE METERS FOR DIVISION 04 = 12,941



DIVISION: 05

TOWN: 01	TOTAL INSIDE METERS =	42
TOWN: 02	TOTAL INSIDE METERS =	3
TOWN: 03	TOTAL INSIDE METERS =	2
TOWN: 09	TOTAL INSIDE METERS =	12
TOWN: 51	TOTAL INSIDE METERS =	4
TOTAL NUMBER OF INSIDE METERS FOR DIVISION 05 =		63

DIVISION: 06

TOWN: 01	TOTAL INSIDE METERS =	43
TOWN: 09	TOTAL INSIDE METERS =	1
TOTAL NUMBER OF INSIDE METERS FOR DIVISION 06 =		44

DIVISION: 08

TOWN: 01	TOTAL INSIDE METERS =	2
TOWN: 09	TOTAL INSIDE METERS =	1
TOTAL NUMBER OF INSIDE METERS FOR DIVISION 08 =		3

DIVISION: 09

TOWN: 01	TOTAL INSIDE METERS =	29
TOWN: 02	TOTAL INSIDE METERS =	7
TOWN: 03	TOTAL INSIDE METERS =	10
TOWN: 04	TOTAL INSIDE METERS =	2
TOWN: 05	TOTAL INSIDE METERS =	8
TOWN: 06	TOTAL INSIDE METERS =	49
TOWN: 08	TOTAL INSIDE METERS =	1
TOWN: 09	TOTAL INSIDE METERS =	2
TOWN: 13	TOTAL INSIDE METERS =	1

TOWN:	25	TOTAL INSIDE METERS =	2
TOWN:	26	TOTAL INSIDE METERS =	1
TOWN:	27	TOTAL INSIDE METERS =	4
TOWN:	28	TOTAL INSIDE METERS =	2
TOWN:	31	TOTAL INSIDE METERS =	4
TOWN:	32	TOTAL INSIDE METERS =	16

TOTAL NUMBER OF INSIDE METERS FOR DIVISION 09 = 138

DIVISION:	10		
TOWN:	01	TOTAL INSIDE METERS =	246
TOWN:	02	TOTAL INSIDE METERS =	2

TOTAL NUMBER OF INSIDE METERS FOR DIVISION 10 = 248

DIVISION:	12		
TOWN:	02	TOTAL INSIDE METERS =	4
TOWN:	03	TOTAL INSIDE METERS =	3
TOWN:	05	TOTAL INSIDE METERS =	2
TOWN:	07	TOTAL INSIDE METERS =	70
TOWN:	13	TOTAL INSIDE METERS =	8
TOWN:	15	TOTAL INSIDE METERS =	6
TOWN:	16	TOTAL INSIDE METERS =	3
TOWN:	17	TOTAL INSIDE METERS =	2
TOWN:	19	TOTAL INSIDE METERS =	15
TOWN:	22	TOTAL INSIDE METERS =	1
TOWN:	27	TOTAL INSIDE METERS =	3

TOWN:	29	TOTAL INSIDE METERS =	2
TOWN:	32	TOTAL INSIDE METERS =	2
TOWN:	35	TOTAL INSIDE METERS =	1
TOWN:	36	TOTAL INSIDE METERS =	2
TOWN:	38	TOTAL INSIDE METERS =	5
TOWN:	39	TOTAL INSIDE METERS =	2
TOWN:	51	TOTAL INSIDE METERS =	50
TOWN:	57	TOTAL INSIDE METERS =	1
TOWN:	58	TOTAL INSIDE METERS =	1
TOWN:	60	TOTAL INSIDE METERS =	7
TOWN:	61	TOTAL INSIDE METERS =	8
TOWN:	67	TOTAL INSIDE METERS =	4
TOWN:	71	TOTAL INSIDE METERS =	78
TOWN:	72	TOTAL INSIDE METERS =	108
TOWN:	73	TOTAL INSIDE METERS =	1
TOWN:	74	TOTAL INSIDE METERS =	47

TOTAL NUMBER OF INSIDE METERS FOR DIVISION 12 = 436

TOTAL NUMBER OF INSIDE METERS COMPANY WIDE = 14,182  
 E N D O F R E P O R T

REPORT ID: PDS001R1  
PGM ID: PDS00100

MISSOURI GAS ENERGY  
INSIDE METER COUNTS

PROCESS DATE: 12/01/2014  
RUN DATE: 12/01/2014  
TIME: 07:45

DIVISION: 02  
TOWN: 01  
TOTAL INSIDE METERS = 191  
  
TOWN: 02  
TOTAL INSIDE METERS = 6  
  
TOWN: 04  
TOTAL INSIDE METERS = 1

TOTAL NUMBER OF INSIDE METERS FOR DIVISION 02 = 198

DIVISION: 03  
TOWN: 01  
TOTAL INSIDE METERS = 43  
  
TOWN: 02  
TOTAL INSIDE METERS = 1  
  
TOWN: 04  
TOTAL INSIDE METERS = 1  
  
TOWN: 05  
TOTAL INSIDE METERS = 4  
  
TOWN: 06  
TOTAL INSIDE METERS = 1  
  
TOWN: 09  
TOTAL INSIDE METERS = 1  
  
TOWN: 12  
TOTAL INSIDE METERS = 44  
  
TOWN: 15  
TOTAL INSIDE METERS = 1  
  
TOWN: 17  
TOTAL INSIDE METERS = 1  
  
TOWN: 18  
TOTAL INSIDE METERS = 1  
  
TOWN: 22  
TOTAL INSIDE METERS = 11  
  
TOWN: 24  
TOTAL INSIDE METERS = 2

TOTAL NUMBER OF INSIDE METERS FOR DIVISION 03 = 111

DIVISION: 04  
TOWN: 01  
TOTAL INSIDE METERS = 12,898  
  
TOWN: 02  
TOTAL INSIDE METERS = 1

TOTAL NUMBER OF INSIDE METERS FOR DIVISION 04 = 12,899

DIVISION: 05  
TOWN: 01  
TOTAL INSIDE METERS = 42  
TOWN: 02  
TOTAL INSIDE METERS = 3  
TOWN: 03  
TOTAL INSIDE METERS = 2  
TOWN: 09  
TOTAL INSIDE METERS = 12  
TOWN: 51  
TOTAL INSIDE METERS = 4

TOTAL NUMBER OF INSIDE METERS FOR DIVISION 05 = 63

DIVISION: 06  
TOWN: 01  
TOTAL INSIDE METERS = 43  
TOWN: 09  
TOTAL INSIDE METERS = 1

TOTAL NUMBER OF INSIDE METERS FOR DIVISION 06 = 44

DIVISION: 08  
TOWN: 01  
TOTAL INSIDE METERS = 2  
TOWN: 09  
TOTAL INSIDE METERS = 1

TOTAL NUMBER OF INSIDE METERS FOR DIVISION 08 = 3

DIVISION: 09  
TOWN: 01  
TOTAL INSIDE METERS = 28  
TOWN: 02  
TOTAL INSIDE METERS = 7  
TOWN: 03  
TOTAL INSIDE METERS = 10  
TOWN: 04  
TOTAL INSIDE METERS = 2  
TOWN: 05  
TOTAL INSIDE METERS = 8  
TOWN: 06  
TOTAL INSIDE METERS = 49  
TOWN: 08  
TOTAL INSIDE METERS = 1

TOWN: 09  
TOTAL INSIDE METERS = 2

TOWN: 13  
TOTAL INSIDE METERS = 1

TOWN: 25  
TOTAL INSIDE METERS = 2

TOWN: 26  
TOTAL INSIDE METERS = 1

TOWN: 27  
TOTAL INSIDE METERS = 4

TOWN: 28  
TOTAL INSIDE METERS = 2

TOWN: 31  
TOTAL INSIDE METERS = 4

TOWN: 32  
TOTAL INSIDE METERS = 16

TOTAL NUMBER OF INSIDE METERS FOR DIVISION 09 = 137

DIVISION: 10

TOWN: 01  
TOTAL INSIDE METERS = 246

TOWN: 02  
TOTAL INSIDE METERS = 2

TOTAL NUMBER OF INSIDE METERS FOR DIVISION 10 = 248

DIVISION: 12

TOWN: 02  
TOTAL INSIDE METERS = 4

TOWN: 03  
TOTAL INSIDE METERS = 3

TOWN: 05  
TOTAL INSIDE METERS = 2

TOWN: 07  
TOTAL INSIDE METERS = 70

TOWN: 13  
TOTAL INSIDE METERS = 8

TOWN: 15  
TOTAL INSIDE METERS = 6

TOWN: 16  
TOTAL INSIDE METERS = 3

TOWN: 17  
TOTAL INSIDE METERS = 2

TOWN:	19	TOTAL INSIDE METERS =	15
TOWN:	22	TOTAL INSIDE METERS =	1
TOWN:	27	TOTAL INSIDE METERS =	3
TOWN:	29	TOTAL INSIDE METERS =	2
TOWN:	32	TOTAL INSIDE METERS =	2
TOWN:	35	TOTAL INSIDE METERS =	1
TOWN:	36	TOTAL INSIDE METERS =	2
TOWN:	38	TOTAL INSIDE METERS =	5
TOWN:	39	TOTAL INSIDE METERS =	2
TOWN:	51	TOTAL INSIDE METERS =	50
TOWN:	57	TOTAL INSIDE METERS =	1
TOWN:	58	TOTAL INSIDE METERS =	1
TOWN:	60	TOTAL INSIDE METERS =	7
TOWN:	61	TOTAL INSIDE METERS =	8
TOWN:	67	TOTAL INSIDE METERS =	4
TOWN:	71	TOTAL INSIDE METERS =	76
TOWN:	72	TOTAL INSIDE METERS =	108
TOWN:	73	TOTAL INSIDE METERS =	1
TOWN:	74	TOTAL INSIDE METERS =	44

TOTAL NUMBER OF INSIDE METERS FOR DIVISION 12 = 431

TOTAL NUMBER OF INSIDE METERS COMPANY WIDE = 14,134

E N D O F R E P O R T

REPORT ID: PDS001R1  
PGM ID: PDS00100

MISSOURI GAS ENERGY  
INSIDE METER COUNTS

PROCESS DATE: 01/01/2015  
RUN DATE: 01/01/2015  
TIME: 07:45

DIVISION: 02  
TOWN: 01  
TOTAL INSIDE METERS = 190  
  
TOWN: 02  
TOTAL INSIDE METERS = 6  
  
TOWN: 04  
TOTAL INSIDE METERS = 1

TOTAL NUMBER OF INSIDE METERS FOR DIVISION 02 = 197

DIVISION: 03  
TOWN: 01  
TOTAL INSIDE METERS = 42  
  
TOWN: 02  
TOTAL INSIDE METERS = 1  
  
TOWN: 04  
TOTAL INSIDE METERS = 1  
  
TOWN: 05  
TOTAL INSIDE METERS = 4  
  
TOWN: 06  
TOTAL INSIDE METERS = 1  
  
TOWN: 09  
TOTAL INSIDE METERS = 1  
  
TOWN: 12  
TOTAL INSIDE METERS = 44  
  
TOWN: 15  
TOTAL INSIDE METERS = 1  
  
TOWN: 17  
TOTAL INSIDE METERS = 1  
  
TOWN: 18  
TOTAL INSIDE METERS = 1  
  
TOWN: 22  
TOTAL INSIDE METERS = 11  
  
TOWN: 24  
TOTAL INSIDE METERS = 2

TOTAL NUMBER OF INSIDE METERS FOR DIVISION 03 = 110

DIVISION: 04  
TOWN: 01  
TOTAL INSIDE METERS = 12,847  
  
TOWN: 02  
TOTAL INSIDE METERS = 1

TOTAL NUMBER OF INSIDE METERS FOR DIVISION 04 = 12,848



DIVISION: 05  
TOWN: 01  
TOTAL INSIDE METERS = 42  
TOWN: 02  
TOTAL INSIDE METERS = 3  
TOWN: 03  
TOTAL INSIDE METERS = 2  
TOWN: 09  
TOTAL INSIDE METERS = 12  
TOWN: 51  
TOTAL INSIDE METERS = 4

TOTAL NUMBER OF INSIDE METERS FOR DIVISION 05 = 63

DIVISION: 06  
TOWN: 01  
TOTAL INSIDE METERS = 43  
TOWN: 09  
TOTAL INSIDE METERS = 1

TOTAL NUMBER OF INSIDE METERS FOR DIVISION 06 = 44

DIVISION: 08  
TOWN: 01  
TOTAL INSIDE METERS = 2  
TOWN: 09  
TOTAL INSIDE METERS = 1

TOTAL NUMBER OF INSIDE METERS FOR DIVISION 08 = 3

DIVISION: 09  
TOWN: 01  
TOTAL INSIDE METERS = 27  
TOWN: 02  
TOTAL INSIDE METERS = 7  
TOWN: 03  
TOTAL INSIDE METERS = 10  
TOWN: 04  
TOTAL INSIDE METERS = 2  
TOWN: 05  
TOTAL INSIDE METERS = 8  
TOWN: 06  
TOTAL INSIDE METERS = 49  
TOWN: 08  
TOTAL INSIDE METERS = 1  
TOWN: 09  
TOTAL INSIDE METERS = 2  
TOWN: 13  
TOTAL INSIDE METERS = 1  
TOWN: 25

	TOTAL INSIDE METERS =	2
TOWN: 26	TOTAL INSIDE METERS =	1
TOWN: 27	TOTAL INSIDE METERS =	4
TOWN: 28	TOTAL INSIDE METERS =	2
TOWN: 31	TOTAL INSIDE METERS =	4
TOWN: 32	TOTAL INSIDE METERS =	16

TOTAL NUMBER OF INSIDE METERS FOR DIVISION 09 = 136

DIVISION: 10		
TOWN: 01	TOTAL INSIDE METERS =	246
TOWN: 02	TOTAL INSIDE METERS =	2

TOTAL NUMBER OF INSIDE METERS FOR DIVISION 10 = 248

DIVISION: 12		
TOWN: 02	TOTAL INSIDE METERS =	4
TOWN: 03	TOTAL INSIDE METERS =	3
TOWN: 05	TOTAL INSIDE METERS =	2
TOWN: 07	TOTAL INSIDE METERS =	69
TOWN: 13	TOTAL INSIDE METERS =	8
TOWN: 15	TOTAL INSIDE METERS =	6
TOWN: 16	TOTAL INSIDE METERS =	3
TOWN: 17	TOTAL INSIDE METERS =	2
TOWN: 19	TOTAL INSIDE METERS =	15
TOWN: 22	TOTAL INSIDE METERS =	1
TOWN: 27	TOTAL INSIDE METERS =	3
TOWN: 29	TOTAL INSIDE METERS =	2

TOWN:	32	TOTAL INSIDE METERS =	2
TOWN:	35	TOTAL INSIDE METERS =	1
TOWN:	36	TOTAL INSIDE METERS =	2
TOWN:	38	TOTAL INSIDE METERS =	5
TOWN:	39	TOTAL INSIDE METERS =	2
TOWN:	51	TOTAL INSIDE METERS =	50
TOWN:	57	TOTAL INSIDE METERS =	1
TOWN:	58	TOTAL INSIDE METERS =	1
TOWN:	60	TOTAL INSIDE METERS =	7
TOWN:	61	TOTAL INSIDE METERS =	8
TOWN:	67	TOTAL INSIDE METERS =	4
TOWN:	71	TOTAL INSIDE METERS =	73
TOWN:	72	TOTAL INSIDE METERS =	108
TOWN:	73	TOTAL INSIDE METERS =	1
TOWN:	74	TOTAL INSIDE METERS =	44

TOTAL NUMBER OF INSIDE METERS FOR DIVISION 12 = 427

TOTAL NUMBER OF INSIDE METERS COMPANY WIDE = 14,076  
 E N D O F R E P O R T