

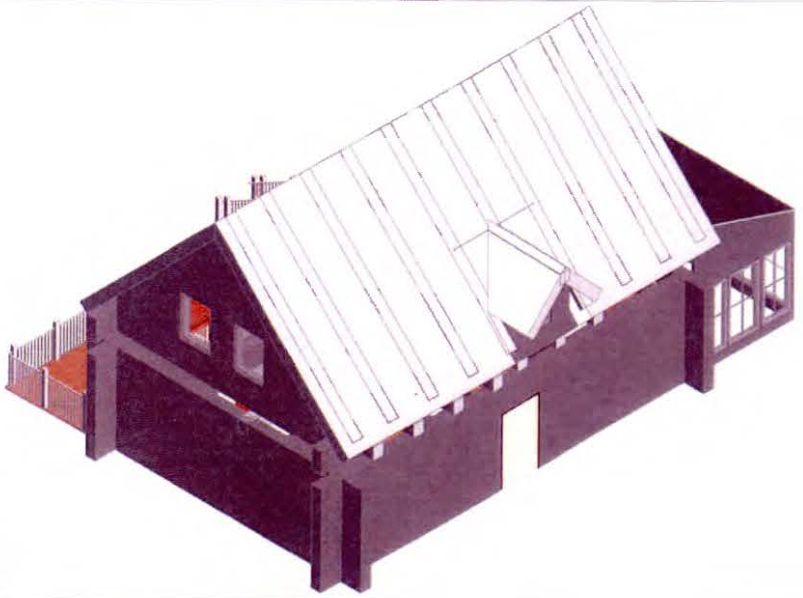
FILED
 August 15, 2014
 Data Center
 Missouri Public
 Service Commission

Witness Exhibit No. 13

Date 8-12-14 Reporter

File No EA-2014-0207

AA



PRELIMINARY
 NOT
 FOR
 CONSTRUCTION



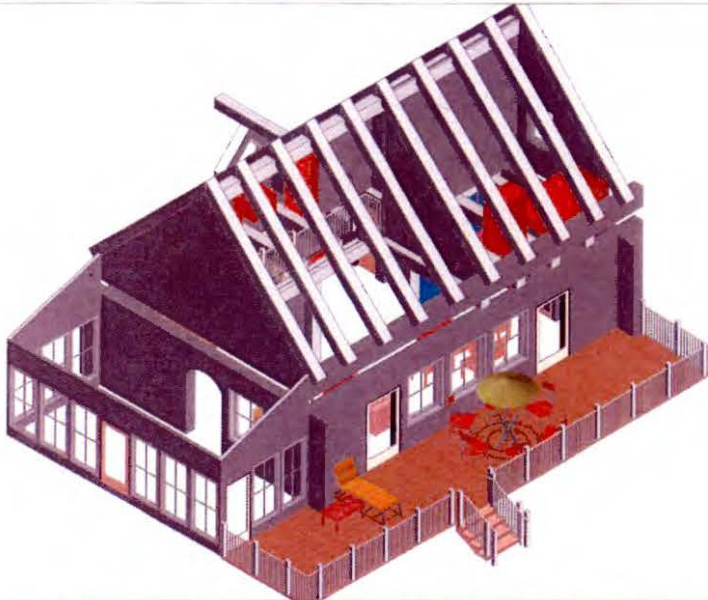
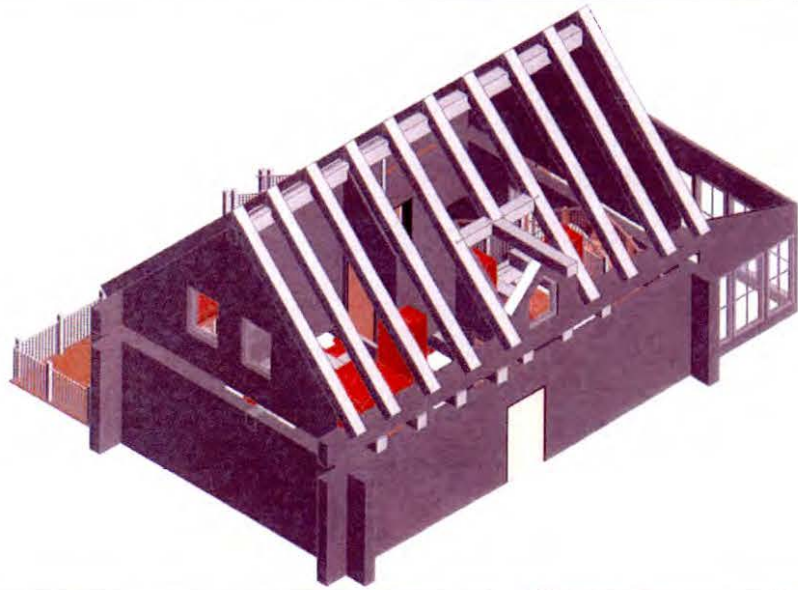
SCHMUESER GORDON MEYER
 118 W. 8TH STREET, SUITE 200
 GLENWOOD SPRINGS, COLORADO 81601
 (970) 945-1004 FAX (970) 945-5948
 ARDEN, COLORADO (970) 925-6727
 CRESTED BUTTE, CO (970) 349-5355

NO.	REVISION	DATE	BY

Job No. 2008-1000000
 Drawn by:
 Date XX/XX/2008
 SC: PE
 Title

SX
 OF X

Copyright © 2008 Schmuesser Gordon Meyer Engineers Architects. All rights reserved. No part of this document may be reproduced without written permission from Schmuesser Gordon Meyer Engineers Architects.



PRELIMINARY
NOT
FOR
CONSTRUCTION

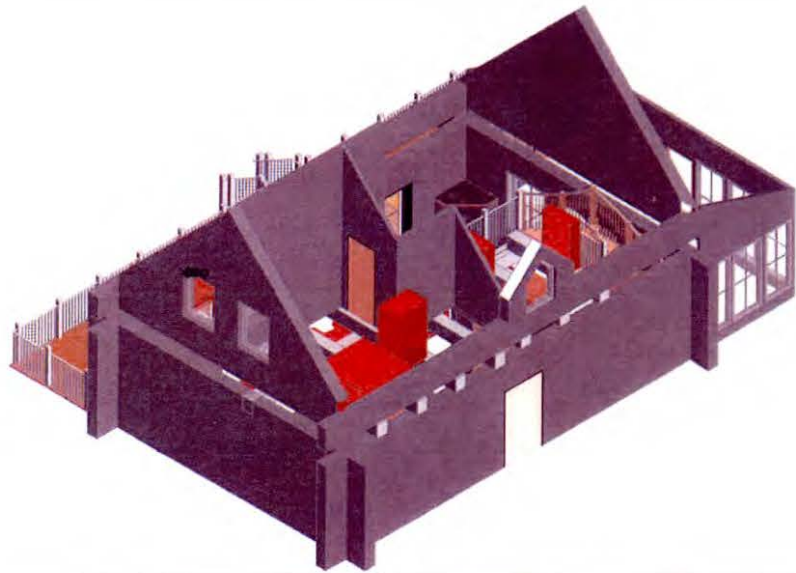


SCHMUESER GORDON MEYER
118 W. 6TH STREET, SUITE 200
GLENNWOOD SPRINGS, COLORADO 81601
(970) 945-1004 FAX (970) 945-5948
ASPEN, COLORADO (970) 925-6727
CRESTED BUTTE, CO (970) 349-5355

NO.	REVISION	DATE	BY

Job No. 2008-XXX-XXX
Drawn by
Date XX/XX/2008
of
Pl.
Sp.

SX
of
X



PRELIMINARY
NOT
FOR
CONSTRUCTION



SCHMUESER GORDON MEYER
118 W. 8TH STREET, SUITE 200
GLENWOOD SPRINGS, COLORADO 81601
(970) 945-1004 FAX (970) 945-9948
ASPEN, COLORADO (970) 925-6727
CRESTED BUTTE, CO (970) 349-5355

NO.	REVISION	DATE	BY

JOB No. 2008-1002-100
Drawn By:
Date: XX/XX/2008
DC: [initials]
Dy:

SX
OF X

PRELIMINARY
NOT
FOR
CONSTRUCTION



SCHUESSER GORDON MEYER
116 W. 8TH STREET, SUITE 200
DENVER, COLORADO 80202
Tel: 303.733.1100
Fax: 303.733.1101
Denver, Colorado 80202 303.733.1100
Chester, Colorado 80513 303.733.1101

NO.	REVISION	DATE	BY

Job No.	
Drawn By	
Check By	
Date	
Scale	
Sheet	
Total	

