

**BEFORE THE PUBLIC SERVICE  
COMMISSION OF THE STATE OF MISSOURI**

SUMMARY OF MEETING

COMES NOW Kansas City Power & Light Company and KCP&L Greater Missouri Operations Company (collectively, the “Company”) and for its Summary of Meeting states as follows:

**Event:           Generation and Transmission & Distribution Procurement Symposium**  
**Date:            Tuesday, April 5, 2016**  
**Start Time:    7:45 a.m. – 12:45 p.m.**  
**Location:      Burns & McDonnell, 9400 Ward Parkway, Kansas City, MO 64114**

Missouri Public Service Commission Attendees:

Commissioner Maida J. Coleman  
Charlene Ketchum, Advisor to Commissioner Coleman  
Contessa Poole-King, Outreach & Diversity Officer

Other Attendees:

Burns & McDonnell Employees  
KCP&L Employees  
Minority-owned, women-owned and Veteran-owned suppliers (see attached agenda/supplier list)

For summary of meeting, see attached agenda/supplier list and presentations.

Respectfully submitted,

*/s/ Robert J. Hack*

Robert J. Hack, MBN 36496  
Phone: (816) 556-2791  
E-mail: [rob.hack@kcpl.com](mailto:rob.hack@kcpl.com)  
Roger W. Steiner, MBN 39586  
Phone: (816) 556-2314  
E-mail: [roger.steiner@kcpl.com](mailto:roger.steiner@kcpl.com)  
Kansas City Power & Light Company  
1200 Main – 16<sup>th</sup> Floor  
Kansas City, Missouri 64105  
Fax: (816) 556-2787

Attorneys for the Company

## CERTIFICATE OF SERVICE

The undersigned certified that a true and correct copy of the foregoing document was sent by electronic transmission, facsimile, U.S. Mail or e-mail to all parties of record in all of its contested cases pending before the Missouri Public Service Commission on this 8<sup>th</sup> day of April, 2016.

*/s/ Robert J. Hack*

Robert J. Hack



# ***GENERATION AND TRANSMISSION & DISTRIBUTION PROCUREMENT SYMPOSIUM***

Tuesday, April 5 // 7:45 a.m.-12:45 p.m.



POWERED BY

**BURNS**  **MCDONNELL**

**KCP&L**  
energizing life

# AGENDA

TUESDAY, APRIL 5 // 7:45 A.M.-12:45 P.M.

7:45-8:30	Breakfast and Registration
8:40-9:00	<b>Keynote Speaker</b> Commissioner Maida J. Coleman Missouri Public Service Commission
9:00-9:15	Q&A with Commissioner Coleman
9:15-9:30	Break
9:30-11:15	Roundtable Discussions Energy Stakeholders and Diverse Businesses
11:15-11:30	Break/Box Lunches Served
11:30-12:30	<b>Guest Speaker</b> Chris Lamb FBI Special Agent–Kansas City Cyber Task Force
12:30	Drone Presentation
12:45	Symposium Concludes

---

## KEYNOTE SPEAKER

---



**COMMISSIONER MAIDA COLEMAN** was appointed to the Missouri Public Service Commission by Governor Jay Nixon, effective Aug. 10, 2015. She was unanimously confirmed by the Missouri State Senate on Jan. 21, 2016.

Prior to her appointment, Commissioner Coleman was the Director of the Office of Community Engagement. She previously served as the Executive Director of the Missouri Workforce Investment Board at the Missouri

Department of Economic Development, and was in a leadership role at the Missouri Department of Labor.

From 2001 until 2009, Commissioner Coleman served first as a State Representative and then as State Senator from St. Louis, becoming the first African-American woman in state history to serve as Senate Minority Leader.

While in the Missouri Senate, Commissioner Coleman sponsored the Hot Weather Rule (Law), which is designed to protect Missourians, particularly those who are older or low-income. The Hot Weather Rule prevents utilities from disconnecting cooling-related service for residential customers during summer weather extremes. She also sponsored legislation that became law to protect children from lead poisoning.

Commissioner Coleman previously held management level positions at the office of the Missouri Secretary of State and the St. Louis Housing Authority. She is a former member of the Board of Directors of Heat-Up/Cool-Down St. Louis. In the early 1980s, Commissioner Coleman worked in the transportation division of the Missouri Public Service Commission.

Commissioner Coleman has a B.A. in Journalism from Lincoln University in Jefferson City and was awarded a Doctor of Humane Letters Degree from Harris-Stowe State University in St. Louis in 2008.

A native of Sikeston, Mo., Commissioner Coleman lives in St. Louis.

# DIVERSE BUSINESS PARTICIPANTS

---

## SUPPLIERS

	<b><i>A CLEAN SLATE</i></b>
CONTACT	(816) 221-0806 <a href="http://www.aclean-slate.com">www.aclean-slate.com</a>
PRODUCTS & SERVICES	Construction and final cleaning, janitorial services, sanitation services (trash removal), parking lot and garage cleaning, power washing, window cleaning/ high cleaning.
	<b><i>ALEXANDER MECHANICAL</i></b>
CONTACT	(816) 833-0700 <a href="http://www.alexmech.com">www.alexmech.com</a>
PRODUCTS & SERVICES	Alexander Mechanical is a full service mechanical contractor and can meet your needs in many phases of mechanical work including: Powerhouse, industrial piping, commercial HVAC, computer aided design, retrofit work, new construction, sheet metal, and plumbing.

---



***ANLAB ENVIRONMENTAL***

CONTACT

(816) 756-2214 [www.anlabenv.com](http://www.anlabenv.com)

PRODUCTS  
& SERVICES

Environmental consulting and contracting (Phase I - II's) asbestos, lead and mold abatement, tank upgrade and monitoring, hazardous waste disposal, etc.



***ARBILL***

CONTACT

1-800-523-5367 [www.arbill.com](http://www.arbill.com)

PRODUCTS  
& SERVICES

Safety glasses, prescription safety glasses, personal protective equipment, safety products, safety training and workplace safety



***AT ABATEMENT (AT INDUSTRIES)***

CONTACT

(816) 242-0444 [www.atindustriesskc.com](http://www.atindustriesskc.com)

PRODUCTS  
& SERVICES

Asbestos abatement, lead paint abatement, mold removal, demoliton, hazardous materials removal



## **BELLEWETHER CONSULTING**

### CONTACT

(816) 298-9455 [www.bellewether.com](http://www.bellewether.com)

### PRODUCTS & SERVICES

Consulting firm offering gap analysis, operations excellence, process and performance efficiencies, advanced analytics, document management and private cloud collaboration



## **CEP**

### CONTACT

(816) 453-8900, Ext. 223 [www.netcep.com](http://www.netcep.com)

### PRODUCTS & SERVICES

CEP is a single-source resource for a wide variety of brand-name disposable industrial supplies. Our primary product categories include: cleanroom products, medical/surgical/personal safety/janitorial and sanitary maintenance, packaging supplies



## **CORNELL ROOFING & SHEET METAL**

### CONTACT

(816) 252-8300 [www.cornellroofing.com](http://www.cornellroofing.com)

### PRODUCTS & SERVICES

Cornell Roofing's services include commercial roofing, roofing systems, sheet metal, metal roofing systems, metal wall panels, commercial roof inspections, and preventative roof maintenance.





CUSTOM ENGINEERING  
MECHANICAL & ELECTRICAL ENGINEERING

## **CUSTOM ENGINEERING**

### CONTACT

(816) 350-1473 [www.customengr.com](http://www.customengr.com)

### PRODUCTS & SERVICES

Custom Engineering, Inc. is a consulting engineering firm that specializes in mechanical, electrical, and plumbing systems design for construction and industrial facilities.



DAVID MASON  
& ASSOCIATES

## **DAVID MASON & ASSOCIATES**

### CONTACT

(314) 678-3164 [www.davidmason.com](http://www.davidmason.com)

### PRODUCTS & SERVICES

Utility industry focus, safety, surveying/3D scanning, facilities, heavy underground, electrical substation design, poles and towers, substation security, solar, cctv/lateral inspection services, hydro excavation



## **DAVIS SAFETY SUPPLY**

### CONTACT

1-800-622-7133 [www.dssdistributors.com](http://www.dssdistributors.com)

### PRODUCTS & SERVICES

Safety supply distribution, janitorial supply distribution, food service distribution/fresh/refrigerated/frozen food distribution, forklift training and certification, safety awareness consulting



Diversified Supply

## **DIVERSIFIED SUPPLY**

### CONTACT

(314) 502-0490 [www.diversifiedsupply.com](http://www.diversifiedsupply.com)

### PRODUCTS & SERVICES

Electrical supplies: ballast, batteries, cable ties, cable trays, conduits, connectors, fixtures/lamps, flashlights, fuses, instrumentation hardware, junction boxes, lubricants, motors, relays, signaling/communications, struts, switches, tape/markers, tools, transformers, valves, wire/cable, wiring devices, etc. Also miscellaneous services like hard to find items, no time to find item services.



## **DUBOIS CONSULTANTS**

### CONTACT

(816) 333-7700 [www.dubconinc.com](http://www.dubconinc.com)

### PRODUCTS & SERVICES

Civil and Structural Engineering Services that include storm water detention/retention, green solutions, water and wastewater treatment plants, power plants, and airport terminals. Additionally, they have experience with structural evaluation studies, special inspections, and concrete rehabilitation projects.



## **FIO RESOURCES**

### CONTACT

(314) 482-9020 [www.fioresources.com](http://www.fioresources.com)

### PRODUCTS & SERVICES

Engineering, industrial, manufacturing and construction staffing



**GENESIS ENVIRONMENTAL SOLUTIONS, INC.**

CONTACT

(816) 299-5900 [www.genesisenviro.com](http://www.genesisenviro.com)

PRODUCTS & SERVICES

Environmental remediation and construction, industrial cleaning, coatings and linings, certified tank inspections.



**HEARTLAND FABRICATION/  
THREE FEATHERS**

CONTACT

(816) 778-0766 [www.heartlandfab.com](http://www.heartlandfab.com)

PRODUCTS & SERVICES

Machining, fabrication and welding



**INFINITE ENERGY CONSTRUCTION**

CONTACT

(816) 763-7471  
[www.infiniteenergyconstruction.com](http://www.infiniteenergyconstruction.com)

PRODUCTS & SERVICES

General construction, electrical contracting/  
sub-contracting, contract management, construction/  
electrical supplier



**INTERNATIONAL BUILDERS  
& CONSULTANTS, INC. (IBC)**

CONTACT

(816) 220-0812 Ext. 1 [www.ibcinc.biz](http://www.ibcinc.biz)

PRODUCTS  
& SERVICES

Commercial carpentry and construction services



**INTREN**

CONTACT

(816) 756-2214 [www.intren.com](http://www.intren.com)

PRODUCTS  
& SERVICES

Locating, manhole pumping and cleaning, hydro excavation and vacuum excavation. In Electrical Distribution INTREN provides: Design/build, overhead new construction and rebuild, overhead to underground conversions, aerial cable, conventional underground, duct installation, cable pulling and splicing, flagging, shoring, frames and covers. Storm response and emergency response. Directional boring, locating services.



**KENTON BROTHERS LOCKSMITHS,  
INC., DBA KENTON BROTHERS, INC.  
SYSTEMS FOR SECURITY**

CONTACT

(816) 842-3700 [www.kentonbrothers.com](http://www.kentonbrothers.com)

PRODUCTS  
& SERVICES

This company provides Locksmith services and is a distributor, supplier, wholesaler and retailer of security safes, security alarms, keys, locks, surveillance systems and closed circuit television systems.



**MARK ONE ELECTRIC CO., INC.**

CONTACT

(816) 842-7023 [www.markone.com](http://www.markone.com)

PRODUCTS  
& SERVICES

Electrical construction: commercial, residential, industrial, data/communications, design/build electrical services



**MARLEON INTERNATIONAL, LLC,  
DBA MARLEON GLOBAL**

CONTACT

(816) 249-2319 [www.marleoninternational.com](http://www.marleoninternational.com)

PRODUCTS  
& SERVICES

The company provides transportation management consulting services, transportation logistics and consulting, transportation solutions, freight traffic consulting services, transportation freight broker



**MULTATECH ARCHITECTS & ENGINEERS**

CONTACT

(817) 289-2050 [www.multatech.com](http://www.multatech.com)

PRODUCTS  
& SERVICES

Architectural, civil engineering, mechanical engineering, electrical engineering, plumbing design and railroad engineering.



## **PANGEA GROUP**

### CONTACT

(314) 333-0600 [www.pangea-group.com](http://www.pangea-group.com)

### PRODUCTS & SERVICES

Engineering and surveying, environmental services, civil construction, facility construction



## **PGL**

### CONTACT

1-877-701-1919 [www.shippgl.com](http://www.shippgl.com)

### PRODUCTS & SERVICES

Consolidation services, deconsolidation services, merge in transit, yard management, logistics facilities, warehousing, project management, warehouse management, distribution, reverse logistics, kit assembly, inventory management, packing and crating



## **PRO METALS**

### CONTACT

(816) 523-0321 [www.prometals.net](http://www.prometals.net)

### PRODUCTS & SERVICES

Installation of air conditioning, heating, exhaust and duct systems, maintenance and repairs on sheet metal duct systems, sheet metal equipment connections.



**PROFESSIONAL  
ENVIRONMENTAL ENGINEERS**

CONTACT

(816) 556-3290 [www.pe-engrs.com](http://www.pe-engrs.com)

PRODUCTS  
& SERVICES

PE offers environmental engineering services through four divisions: Site Characterization, Environmental Compliance, Engineering & Design, and Field Services.



**QTI, INC.**

CONTACT

(913) 764-7845 [www.qti5.com](http://www.qti5.com)

PRODUCTS  
& SERVICES

QTI, Inc. provides general construction services along with asphalt/concrete repairs, underground power distribution, custom surveillance/security installations, low voltage electrical services, fencing and landscaping along with warehouse distribution.



**SOLAR RICH POWER**

CONTACT

(816) 874-7094 [www.solarrichpower.com](http://www.solarrichpower.com)

PRODUCTS  
& SERVICES

Evaluation and design, installation and maintenance

Sosaya & Sons Construction, Inc.

## **SOSAYA & SONS**

### CONTACT

(913) 745-8800

### PRODUCTS & SERVICES

Electrical Utility Contractor providing underground electrical needs for developers around the greater metropolitan area. As well, Sosaya & Sons offers Street Lighting installation, Traffic Signal installation and directional boring.



## **STERLING BOILER & MECHANICAL, INC.**

### CONTACT

(865) 803-3786 [www.sterlingboiler.com](http://www.sterlingboiler.com)

### PRODUCTS & SERVICES

Sterling provides construction labor services in all disciplines, fabrication and machining, in the power generation, chemical, plastics, aluminum, metal processing, oil refining and paper processing industries.



## **STRONG SUPPLY**

### CONTACT

(816) 318-9226 [www.strongsupplyinc.com](http://www.strongsupplyinc.com)

### PRODUCTS & SERVICES

Distributor of valves, gauges, filters and pump parts and part of flow serve





**TARLTON**

CONTACT

(314) 633-3338 [www.tarltontcorp.com](http://www.tarltontcorp.com)

PRODUCTS  
& SERVICES

Preconstruction services, construction services,  
concrete restoration and hydrovac services



**Tehama**

**TEHAMA LLC**

CONTACT

(913) 209-2193 [www.tehamallc.com](http://www.tehamallc.com)

PRODUCTS  
& SERVICES

Tehama LLC provides engineering, architectural,  
and drafting services, as well as specializes in envi-  
ronmental compliance, remediation and facilities  
engineering operations.



**THOMASSON COMPANY**

CONTACT

(601) 650-3925 [www.thomassoncompany.com](http://www.thomassoncompany.com)

PRODUCTS  
& SERVICES

Wood poles and pilings, crane and pipeline  
mats, resources, inventory management, delivery  
and distribution



## **TITAN ENVIRONMENTAL**

### CONTACT

(816) 561-0959 [www.titankc.com](http://www.titankc.com)

### PRODUCTS & SERVICES

Mold consulting, testing, training and removal.  
Asbestos consulting testing and removal. Lead based paint testing and training and abatement.  
Meth lab assessment, cleanup and decontamination



## **TUKUH TECHNOLOGIES, LLC**

### CONTACT

(816) 500-5082 [www.tukuh.com](http://www.tukuh.com)

### PRODUCTS & SERVICES

Drones, geospatial technology and managed IT services



## **VERACITY CONSULTING**

### CONTACT

(913) 945-1912 [www.engageveracity.com](http://www.engageveracity.com)

### PRODUCTS & SERVICES

Program management, data services, enterprise architecture, managed infrastructure solutions, security, web solutions



**WHATEVER IT TAKES  
ELECTRICAL CONTRACTORS**

CONTACT

(816) 616-6600 [www.whateverttakeselectrical.com](http://www.whateverttakeselectrical.com)

PRODUCTS  
& SERVICES

Electrical contracting



**WILKERSON CRANE RENTAL, INC.**

CONTACT

(913) 238-7030 [www.wilkersoncranerental.com](http://www.wilkersoncranerental.com)

PRODUCTS  
& SERVICES

Wilkerson's is an expert in operated crane rental, heavy hauling, heavy equipment servicing and repair, lift planning, job site estimating and specialized rigging. We also provide 24-hour emergency service.

**NON-SUPPLIER**



**FEDERAL BUREAU OF INVESTIGATION**

PRODUCTS  
& SERVICES

As an intelligence-driven and a threat-focused national security organization with both intelligence and law enforcement responsibilities, the mission of the FBI is to protect and defend the United States against terrorist and foreign intelligence threats, to uphold and enforce the criminal laws of the United States, and to provide leadership and criminal justice services to federal, state, municipal, and international agencies and partners.



## **HISPANIC CHAMBER OF COMMERCE**

### CONTACT

(816) 472-6767 [www.hccgkc.com](http://www.hccgkc.com)

### PRODUCTS & SERVICES

We engage, connect and develop the Hispanic Small Business Community. The Hispanic Chamber of Commerce of Greater Kansas City is the voice for small business in the Greater Kansas City metro. We represent business of all sizes across 8 counties in both Kansas and Missouri.



## **THE LACLEDE GROUP, INC.**

### CONTACT

(314) 342-0878 [www.thelacledegroup.com](http://www.thelacledegroup.com)

### PRODUCTS & SERVICES

The Laclede Group, Inc. (NYSE: LG), headquartered in St. Louis, Missouri, is a public utility holding company whose primary business is the safe and reliable delivery of natural gas service to more than 1.56 million residential, commercial and industrial customers across Missouri and Alabama. Its Gas Utility segment consists of three natural gas utilities: Laclede Gas Company (serving St. Louis and eastern Missouri), Missouri Gas Energy (serving Kansas City and western Missouri) and Alabama Gas Corporation (serving 186 cities and Alabama communities including Birmingham and Montgomery).

## NOTES

## MCA-GKC

### **MINORITY CONTRACTORS ASSOCIATION OF GREATER KANSAS CITY**

#### CONTACT

(816) 924-4441 [www.mcagkc.wordpress.com](http://www.mcagkc.wordpress.com)

#### PRODUCTS & SERVICES

This association serves minority contractors in the Kansas City Area



### **MISSOURI PUBLIC SERVICE COMMISSION**

#### CONTACT

(573) 751-6394 [www.psc.mo.gov](http://www.psc.mo.gov)

#### PRODUCTS & SERVICES

The Missouri Public Service Commission regulates investor-owned electric, natural gas, steam, water and sewer utilities in Missouri. The Commission also has limited jurisdiction over telecommunications providers in the state. In addition, the Commission regulates the operational safety of the state's rural electric cooperatives and municipally owned natural gas utilities.

## NOTES

POWERED BY

**BURNS**  **MCDONNELL**

  
**KCP&L**  
energizing life

# Innovating the Future

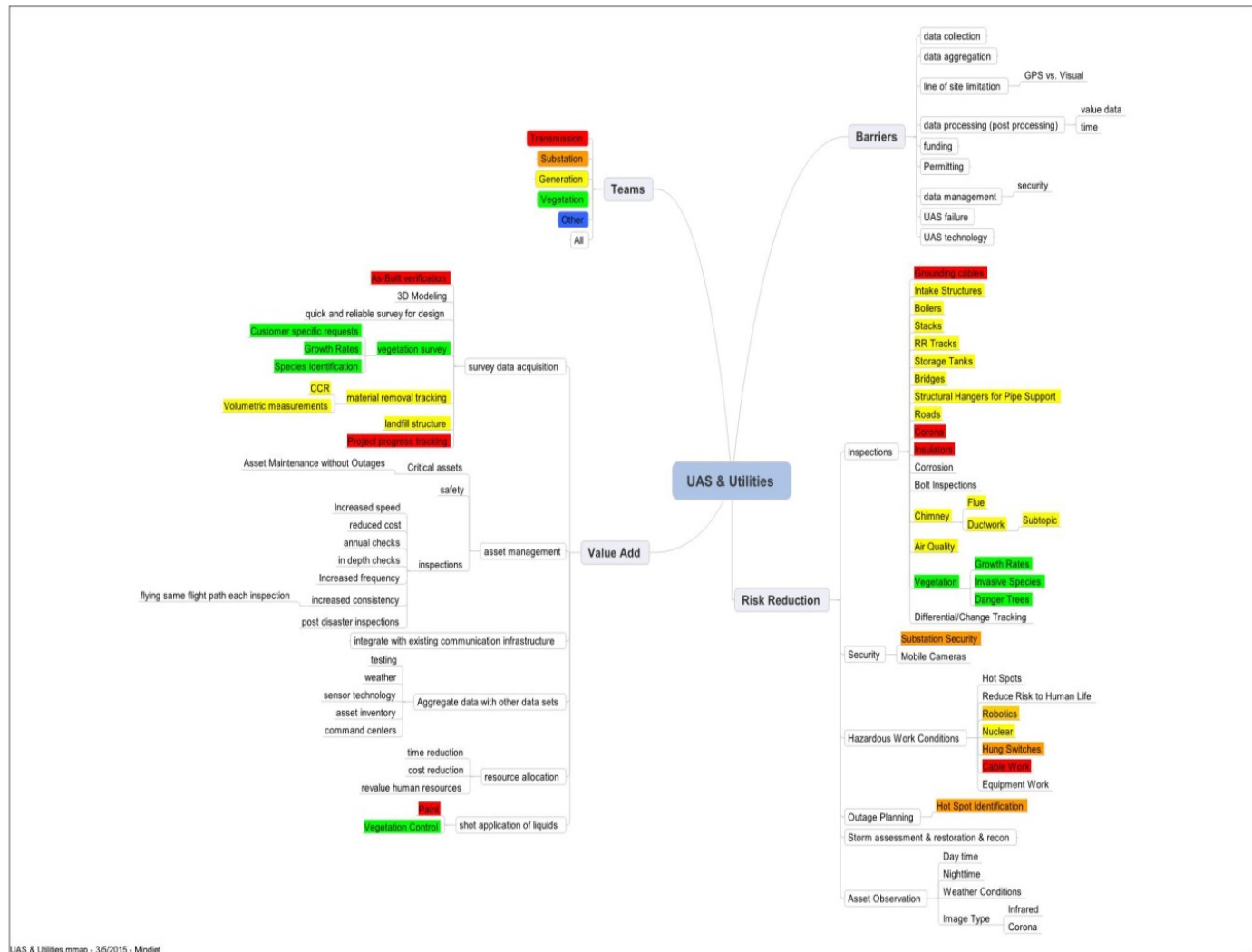
## Automation & Robotics: UAVs

By Laron Evans

From Burns & McDonnell



# Brainstorm: BMcD, KCP&L, & KSU







# Power Industry Applications

# T-Line Inspection



# D-Line Inspection



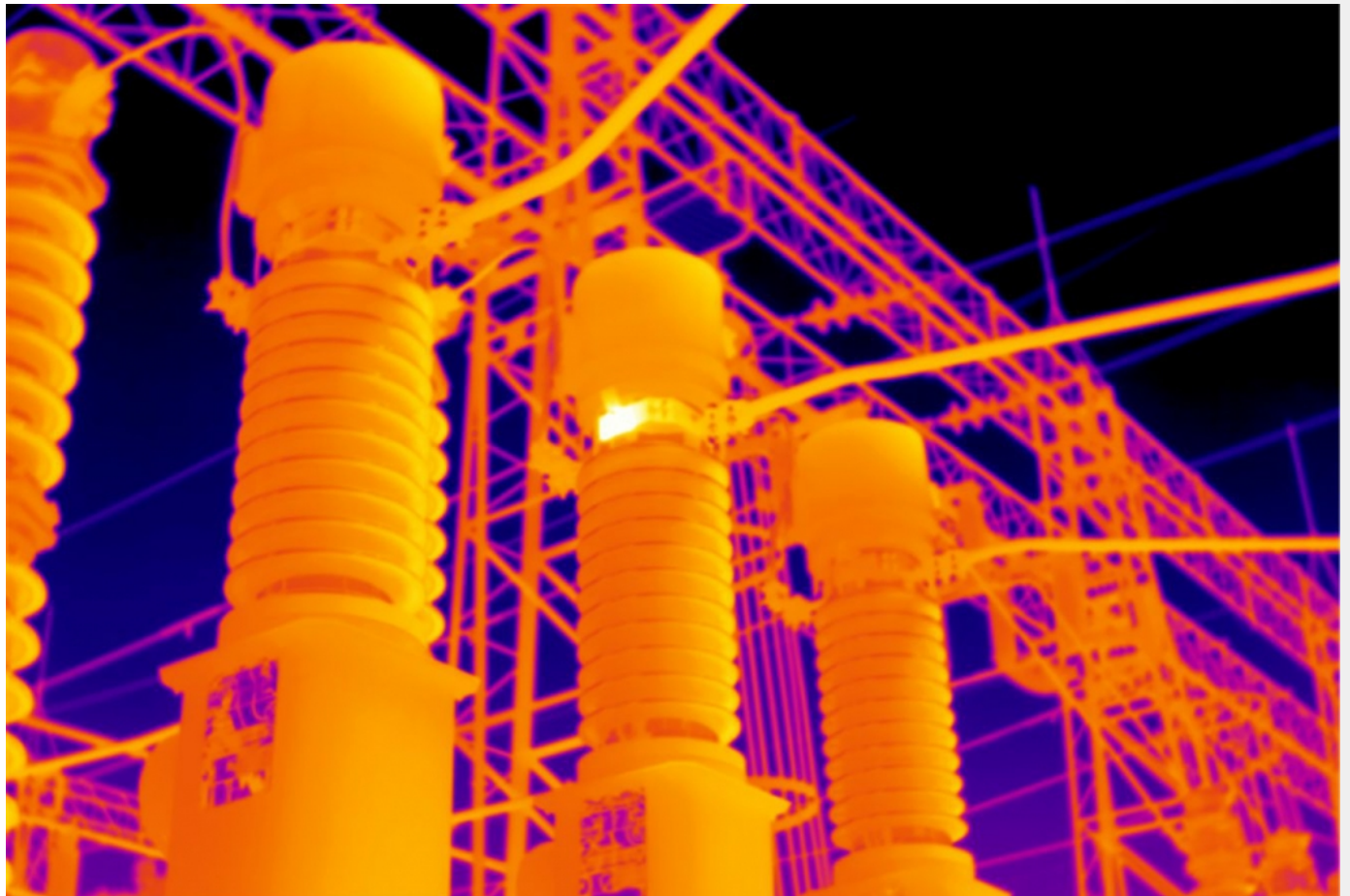
# Boiler Inspection



# Landfill Inspection



# Substation Inspection





Questions?

