



economic development  
kcped.com

## KCP&L Economic Development Rider

Joe Fangman,  
Senior Manager, Customer Solutions



economic development  
kcpd.com

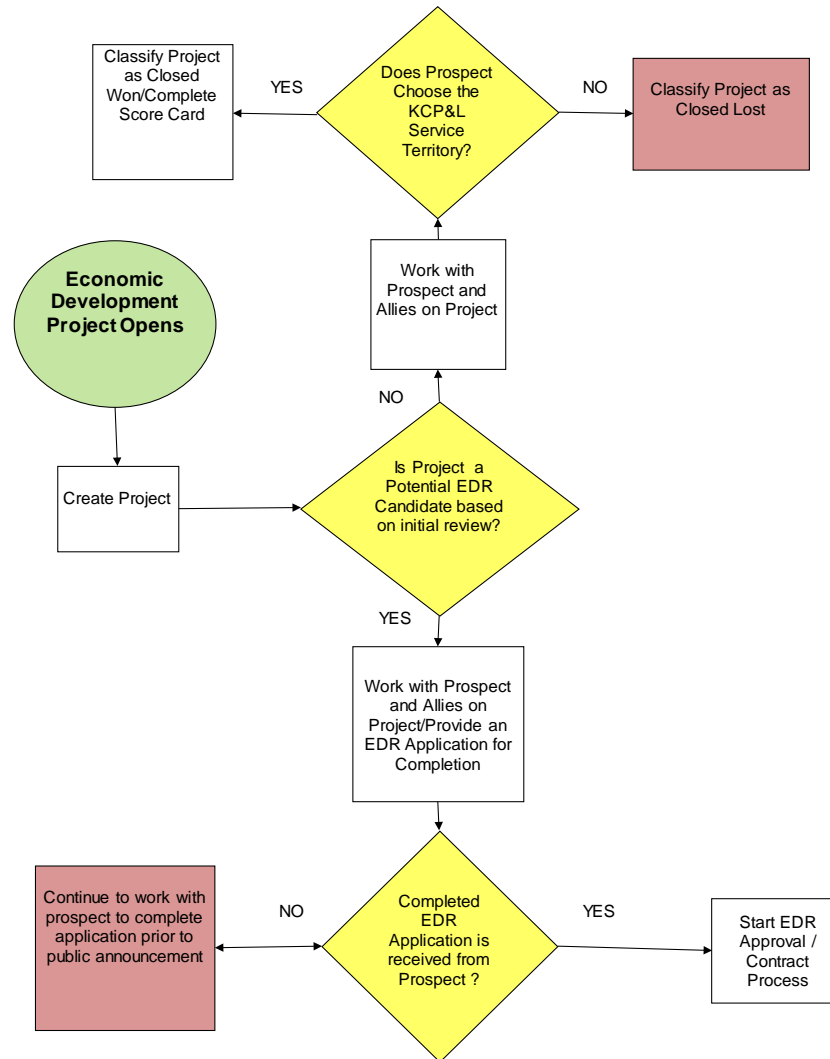
## Economic Development Rider

### **Purpose:**

Encourage industrial and commercial business development in Missouri and retain existing load where possible.

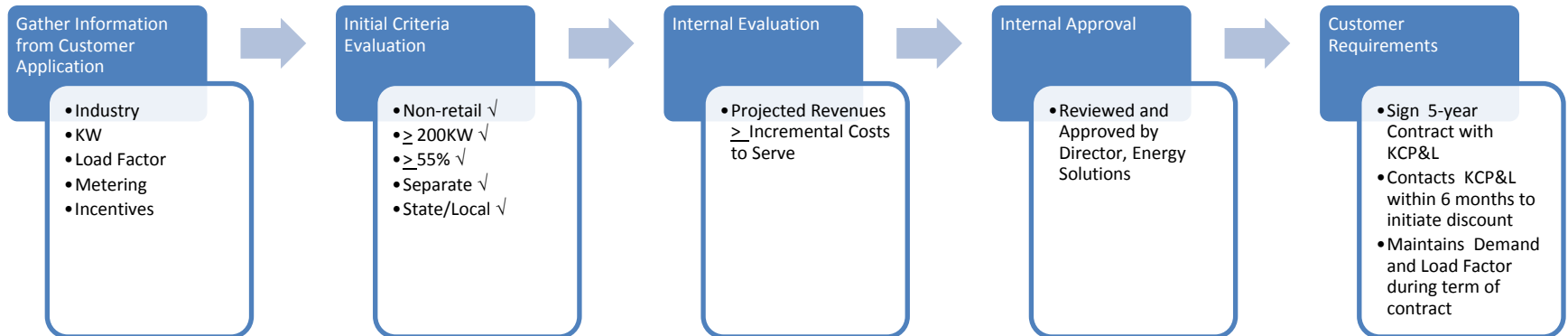
### **EDR Tariff updated 2013**

- Consistent tariff for both KCP&L-MO and KCP&L-GMO
- Load retention benefits

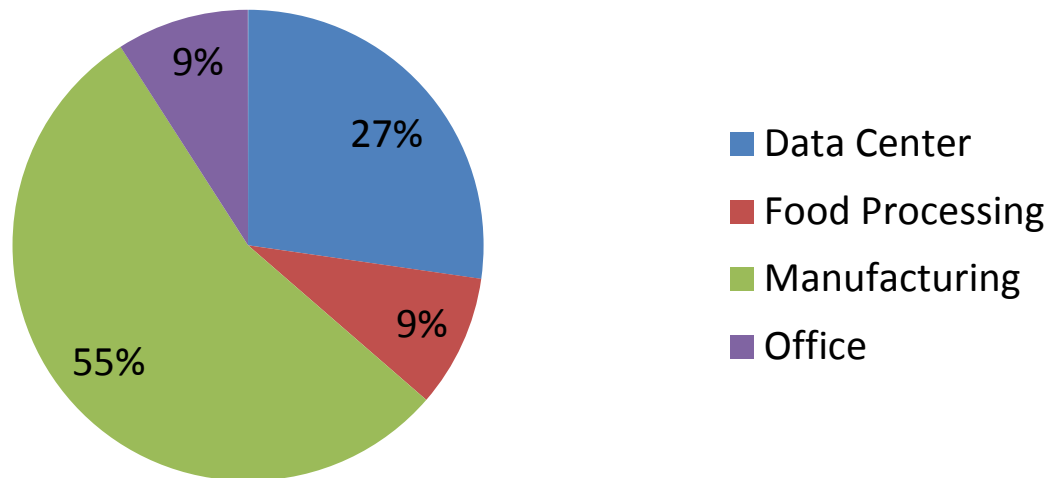




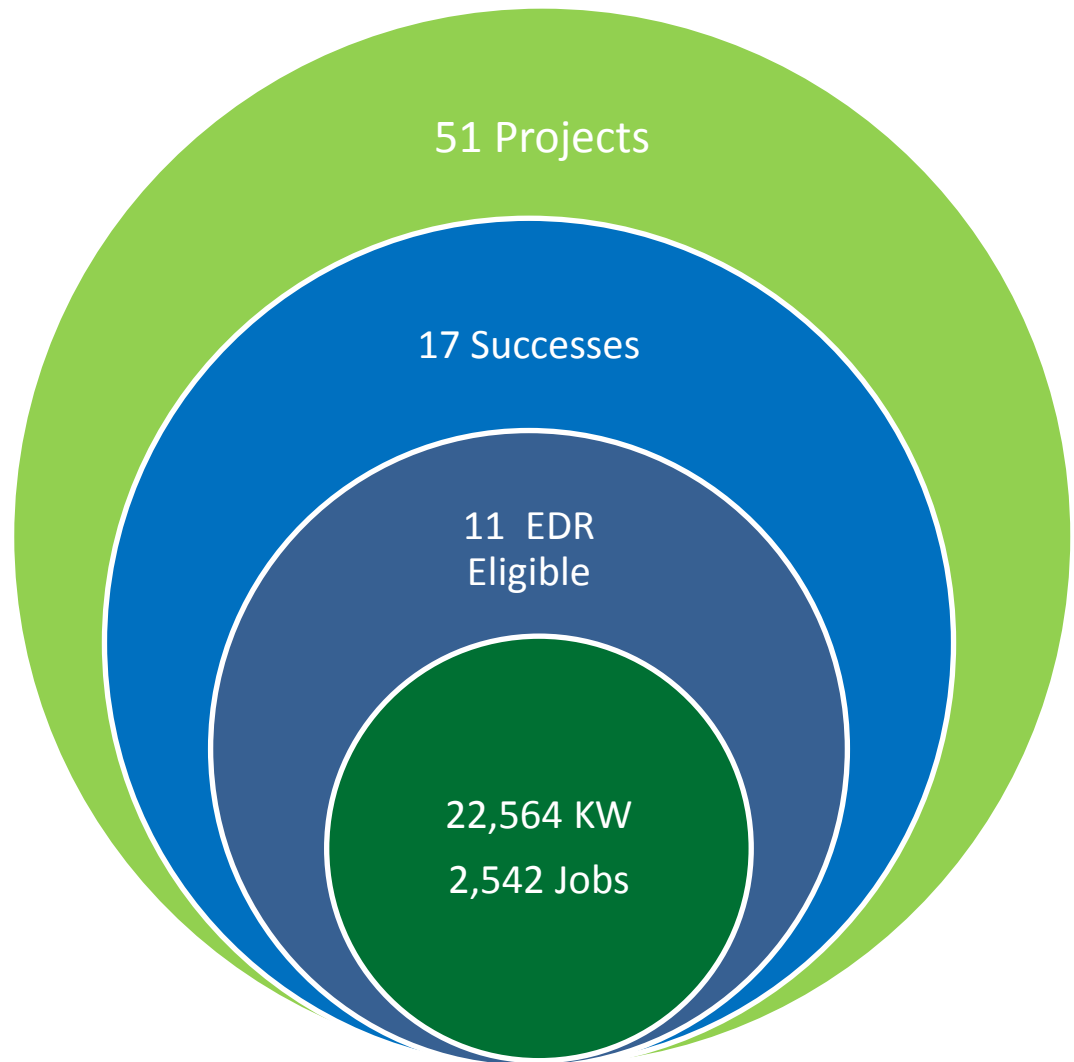
economic development  
kcpd.com



### 2014 EDR by Industry Type



- Not all projects receive an EDR





economic development  
kcped.com

## Urban Core EDR

### **Purpose:**

Encourage and stimulate industrial and commercial businesses to develop within that portion of the Company's service territory that is bounded by the Missouri River on the north, Interstate 435 on the south and east, and State Line Road on the west.

Incent investment and jobs into Urban Core where there is stranded infrastructure.



economic development  
kcped.com

## Urban Core EDR

Available only within defined “Urban Core Development Area”

No Industry Restriction (Retail Eligible))

Jobs and Investment Part of Criteria

Total Savings Cap Based on 240KW and 50% Load Factor

Available Circuit Capacity  $\geq$  30% Required



economic development  
kcped.com

# Sample Project for Discussion



economic development  
kcpled.com

## PROJECT OVERVIEW

**CHALLENGE:** Re-use of a large existing facility that was single use operation and now is leased to a number of companies. How to apply the EDR discount to companies that qualify that occupy space in that building.

### PROJECT OVERVIEW:

- **Aviation Technical Services (ATS)** - the largest third-party, transport aircraft maintenance, repair and overhaul (MRO) providers in North America.
  - Kansas City International Airport (KCI) competed against Lake Charles, Louisiana, Spokane, Washington and Moses Lake, Washington to secure a 607,000 sq. ft. operation that will employ up to 1,000.



economic development  
kcpled.com

## PROJECT OVERVIEW

### PROJECT OVERVIEW:

- Projected Demand: 700KW
- Projected Load Factor: 78%
- Incentives: State of Missouri Build Program
- Separately Metered: No/KCMO Aviation Dept.

### PROJECT SOLUTION:

- Worked with KCAD to allow them to separately measure the demand and usage of the ATS space. The discount is applied one month later.