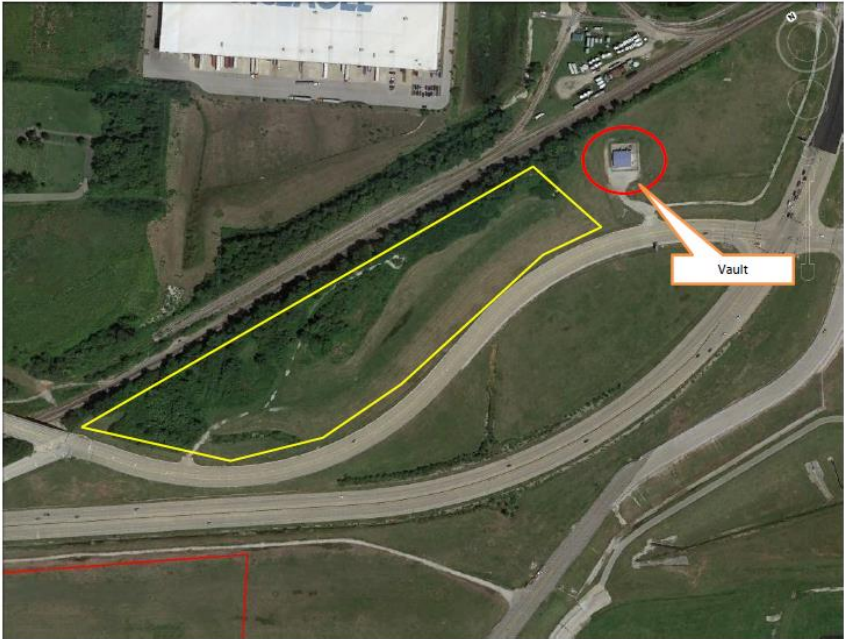


# Lambert - St. Louis International Airport

## Missouri Bottom Site



- MoBottom Site**
- Size: ±12.0 acres, more-or-less
  - City: Bridgeton
  - Zoned: M-1 manufacturing district
  - Utilities: all
  - Topography: hillside, sloping down north to south
  - Local Access: Missouri Bottom Rd
  - Adjacencies: Airport, Norfolk Southern Rail Road, airport electric vault
  - Challenges
    1. Fiber optic cable on railroad side
    2. Under approach/departure path to Runway 12L/30R
    3. Clearing and grubbing of the upper slope



View: Looking East from Missouri Bottom Rd at Entrance to Missouri Bottom Site



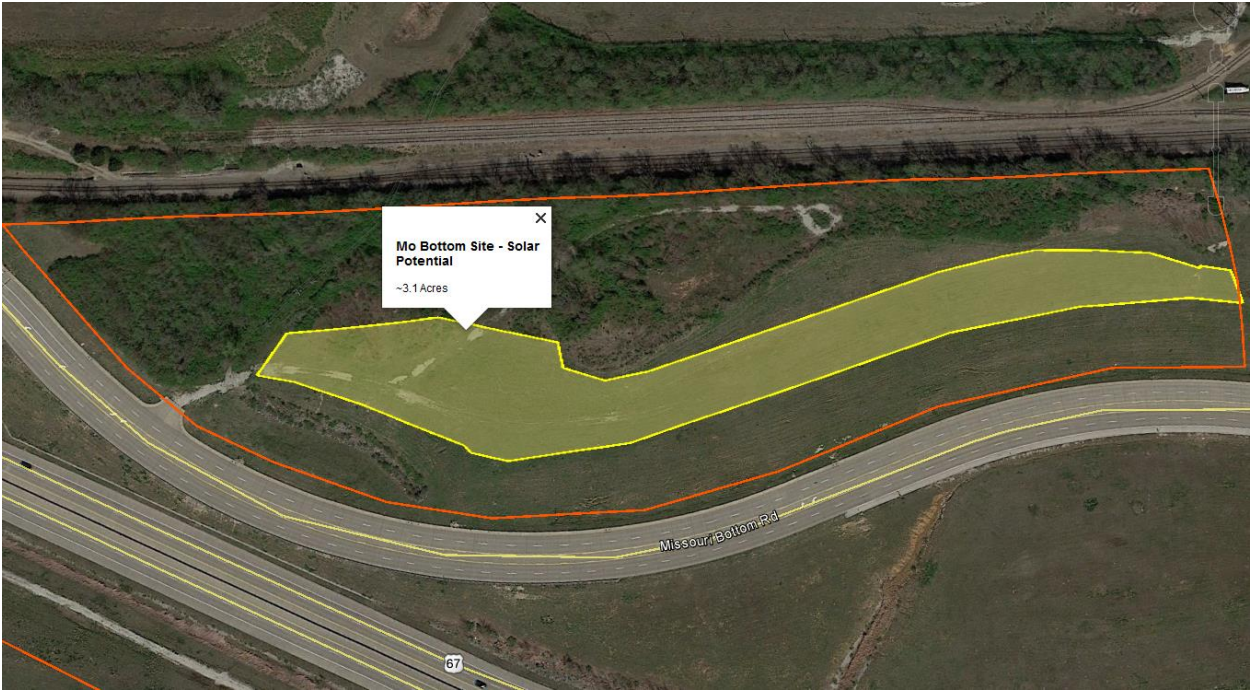
View: Looking Northwest from N. Lindbergh Blvd across Missouri Bottom Rd at Missouri Bottom Site



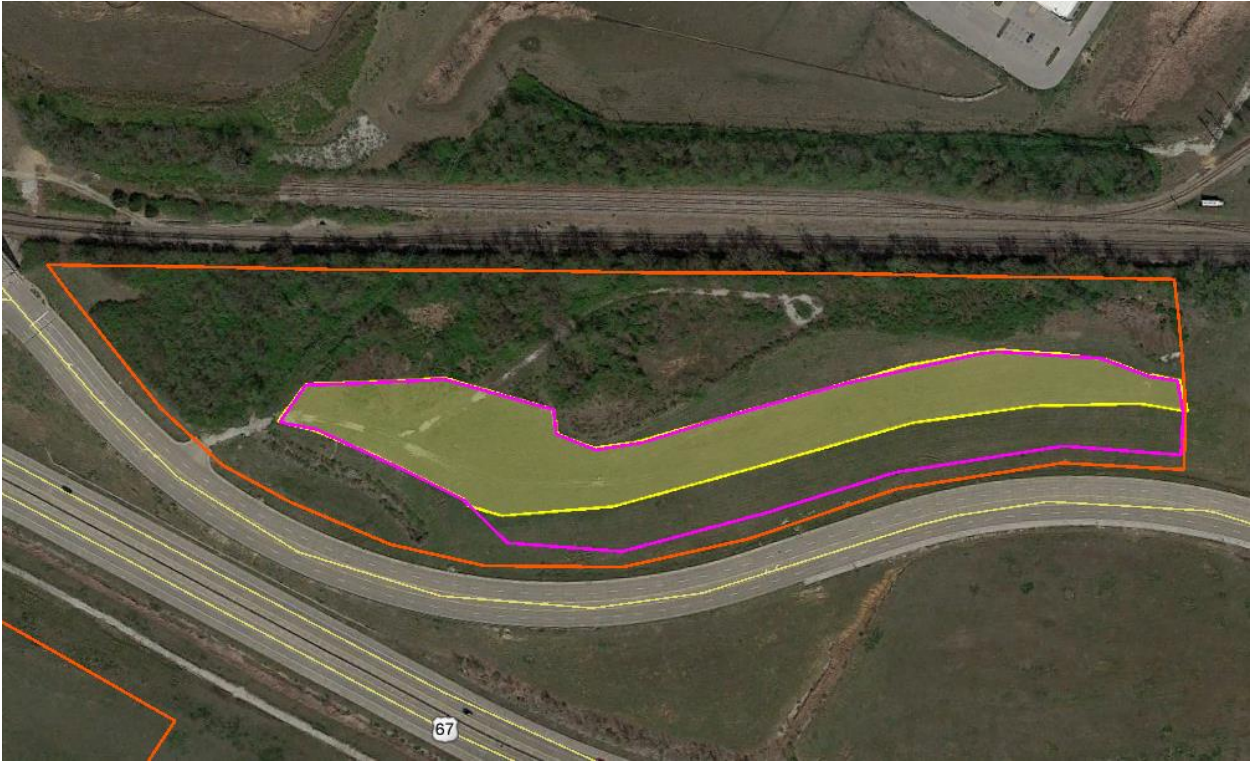
View: Looking Northwest from Missouri Bottom Rd. at Missouri Bottom Site



Looking West from the far East edge of the site across the flat table top portion of the MoBottom site. The flat portion of the site has potential for 3-



~ 3.1 acres highlighted in yellow; could be potential for additional capacity on steep South Slope not included in Yellow highlighted area



~4.6 acres including the slope on the South side(Outlined in Pink)

