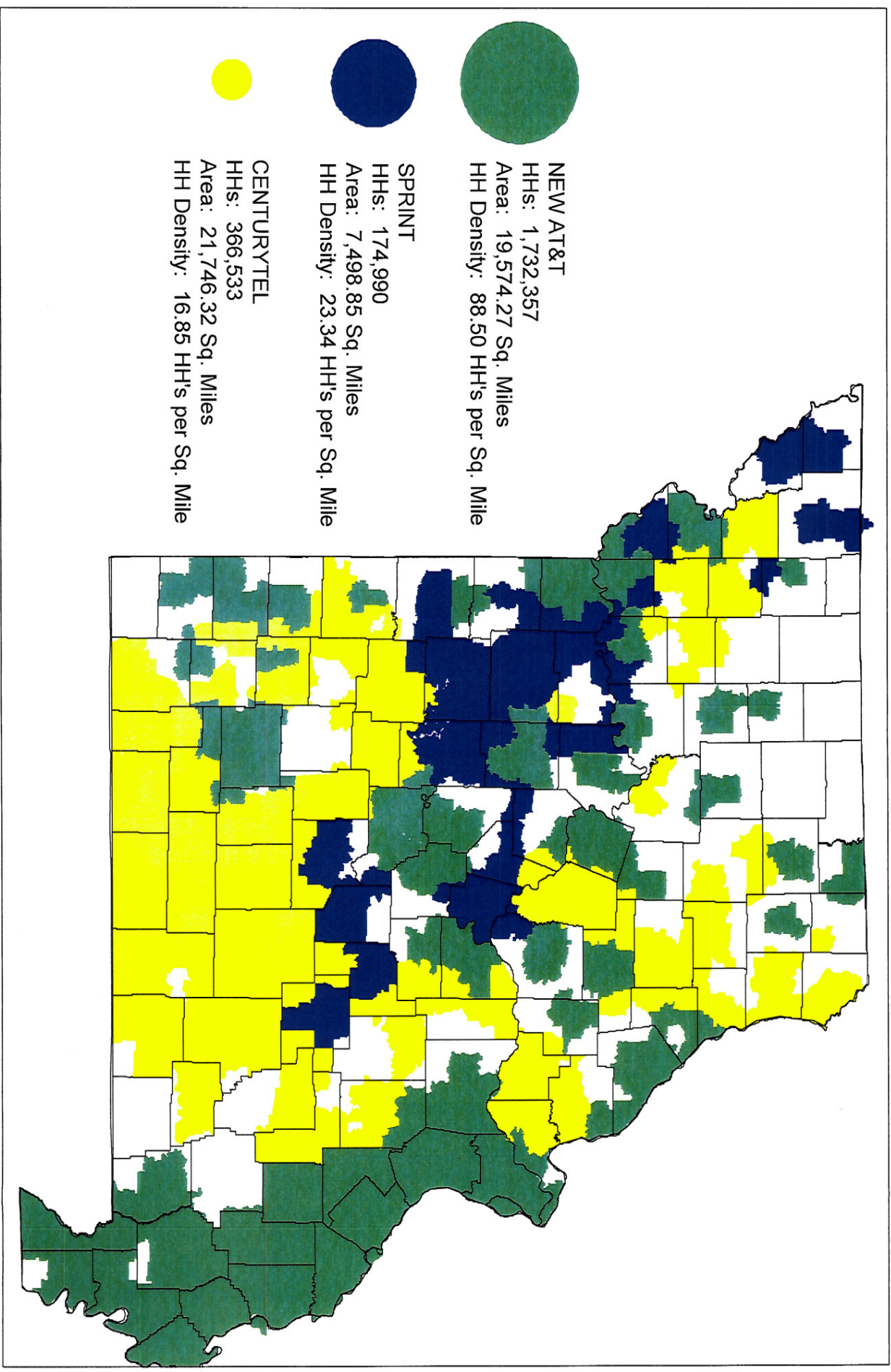
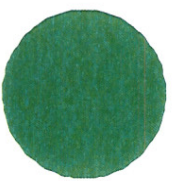
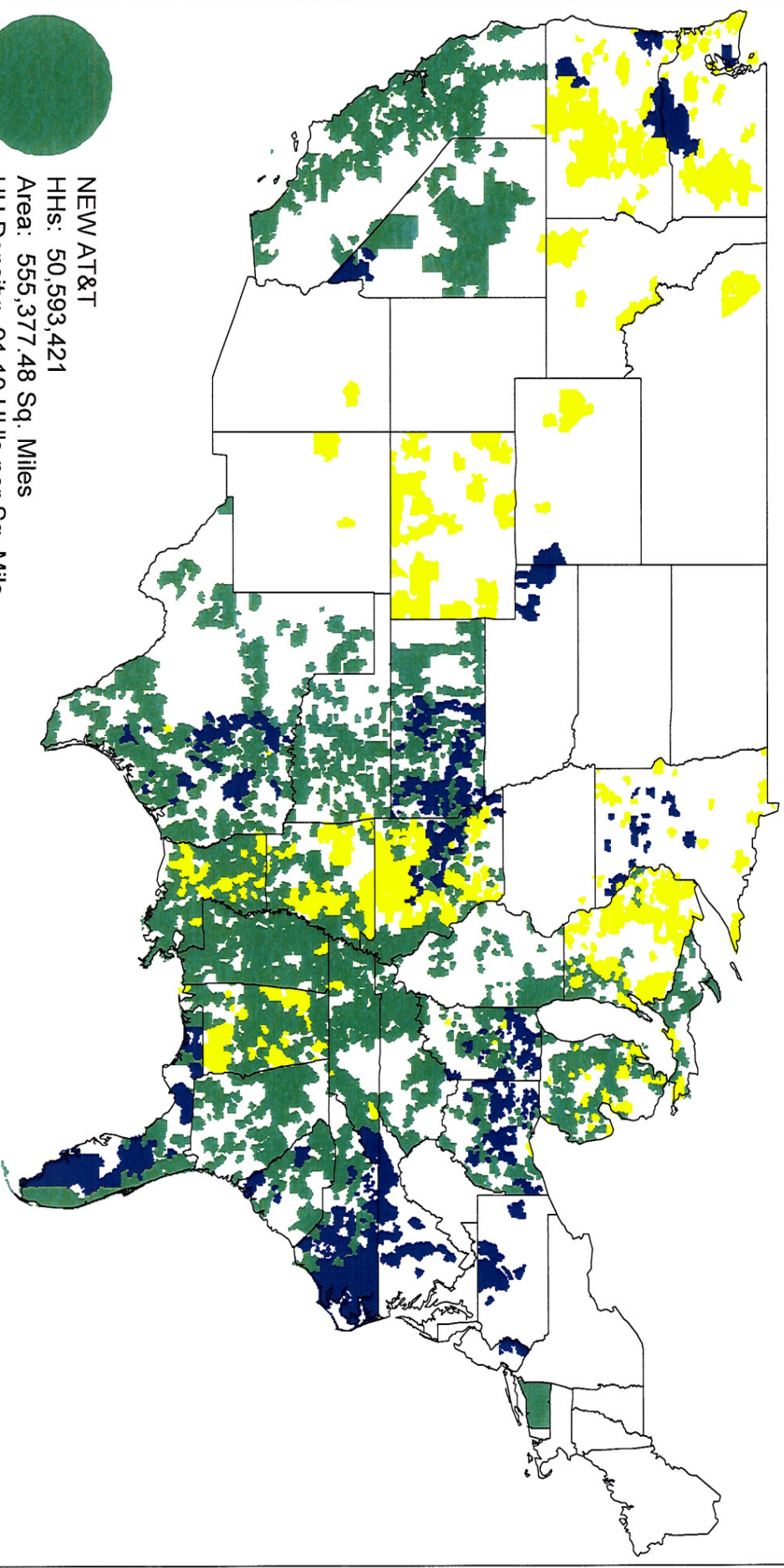


# AT&T, SPRINT, and CENTURYTEL



# AT&T, SPRINT, and CENTURYTEL



NEW AT&T  
HHS: 50,593,421  
Area: 555,377.48 Sq. Miles  
HH Density: 91.10 HH's per Sq. Mile

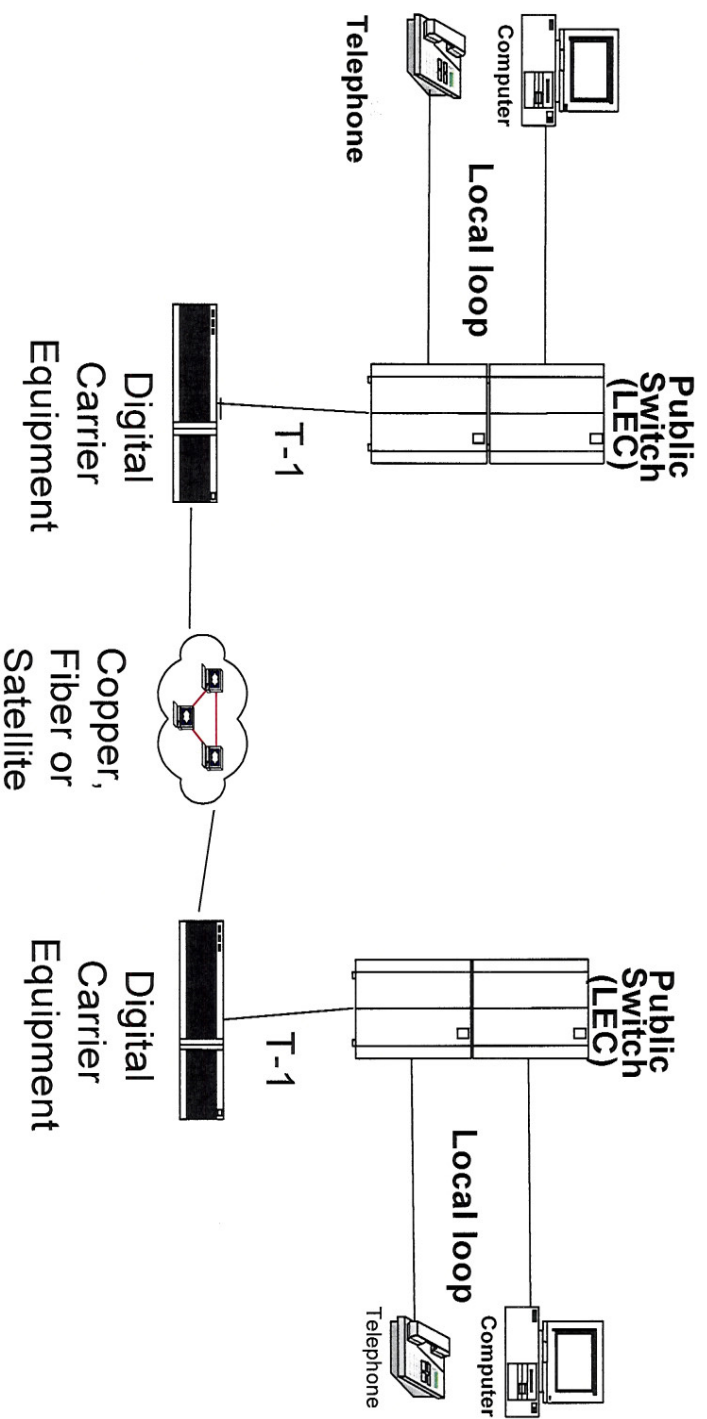


SPRINT  
HHS: 5,635,336  
Area: 139,436.64 Sq. Miles  
HH Density: 40.42 HH's per Sq. Mile



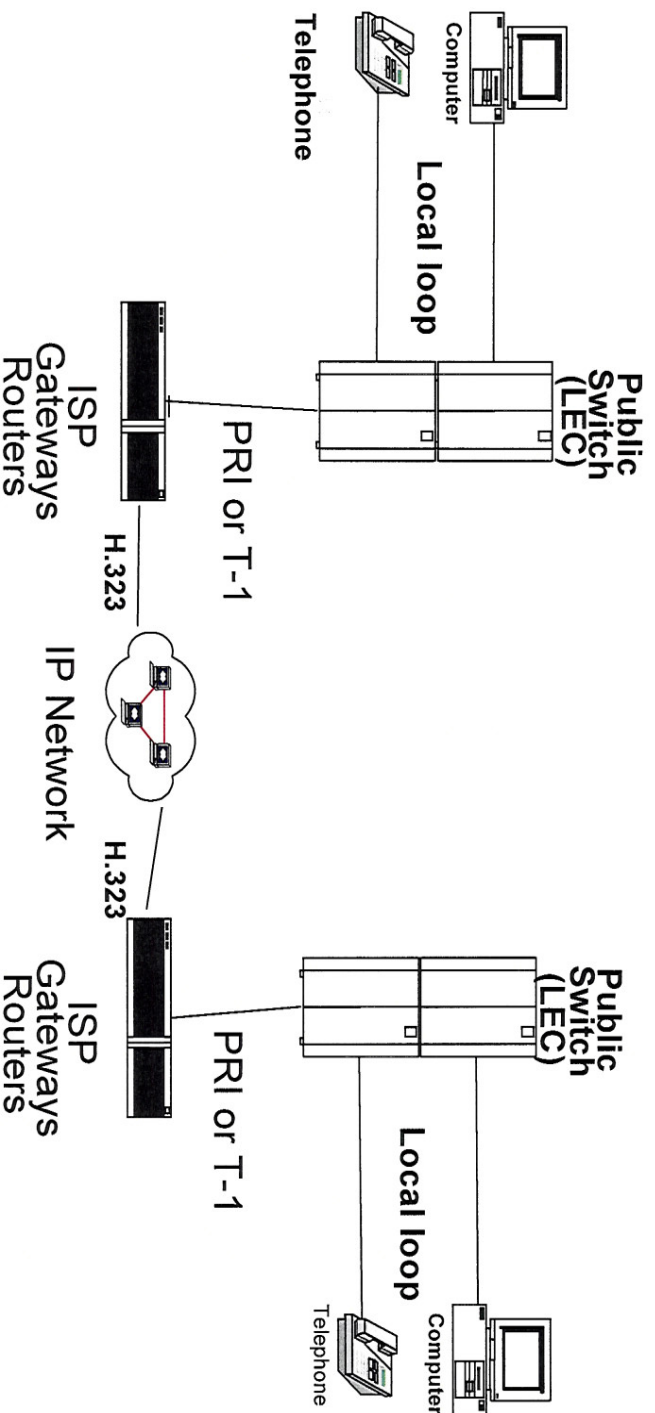
CENTURYTEL  
HHS: 1,969,499  
Area: 185,462.67 Sq. Miles  
HH Density: 10.62 HH's per Sq. Mile

## Interexchange Typical Configuration





## VoIP Typical Configuration

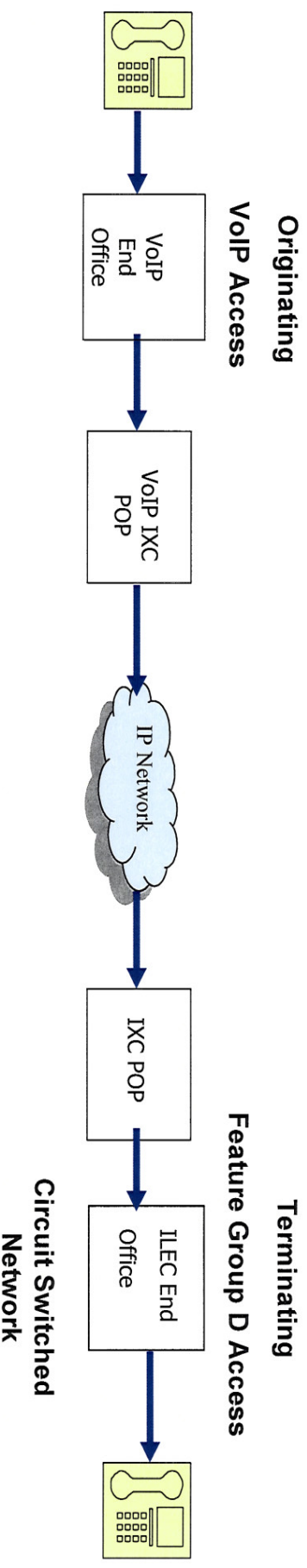


Routers replace Digital Carrier equipment and the "IP Network" replaces the copper, fiber or satellite. This substitution illustrates how nothing but technology has changed with the use of VoIP for interexchange traffic transportation.

# VoIP and Access Charge Avoidance

## Exchange A

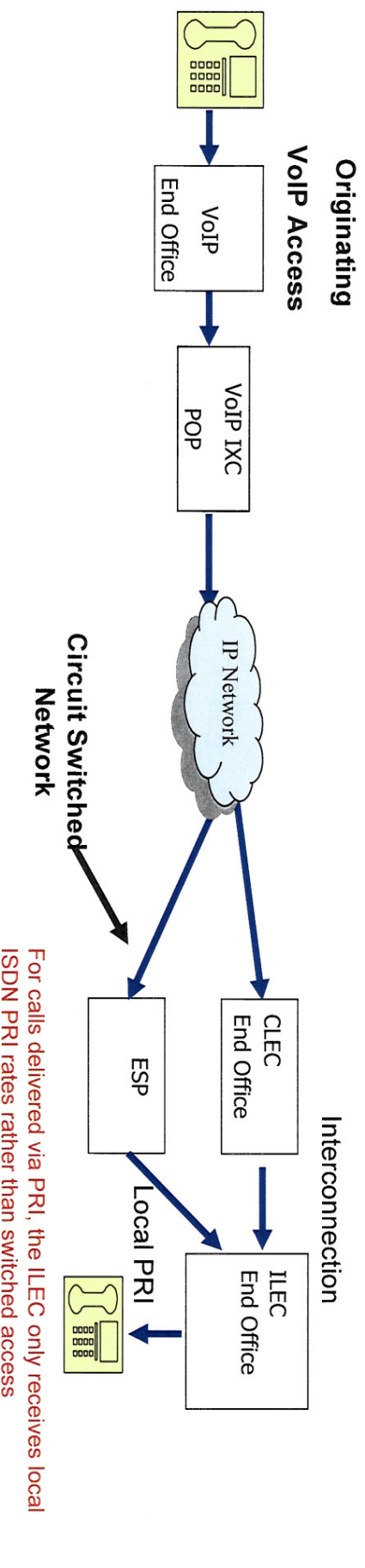
### Lawful access arrangement



## Exchange B

## Exchange A

### VoIP avoidance of avoid access charge payments



## Exchange B

Recip Comp is billed for calls delivered over Local Interconnection Trunks-- unless bill and keep terms are in force, then nothing is billed

For calls delivered via PRI, the ILEC only receives local ISDN PRI rates rather than switched access