

APPENDIX B: Figures

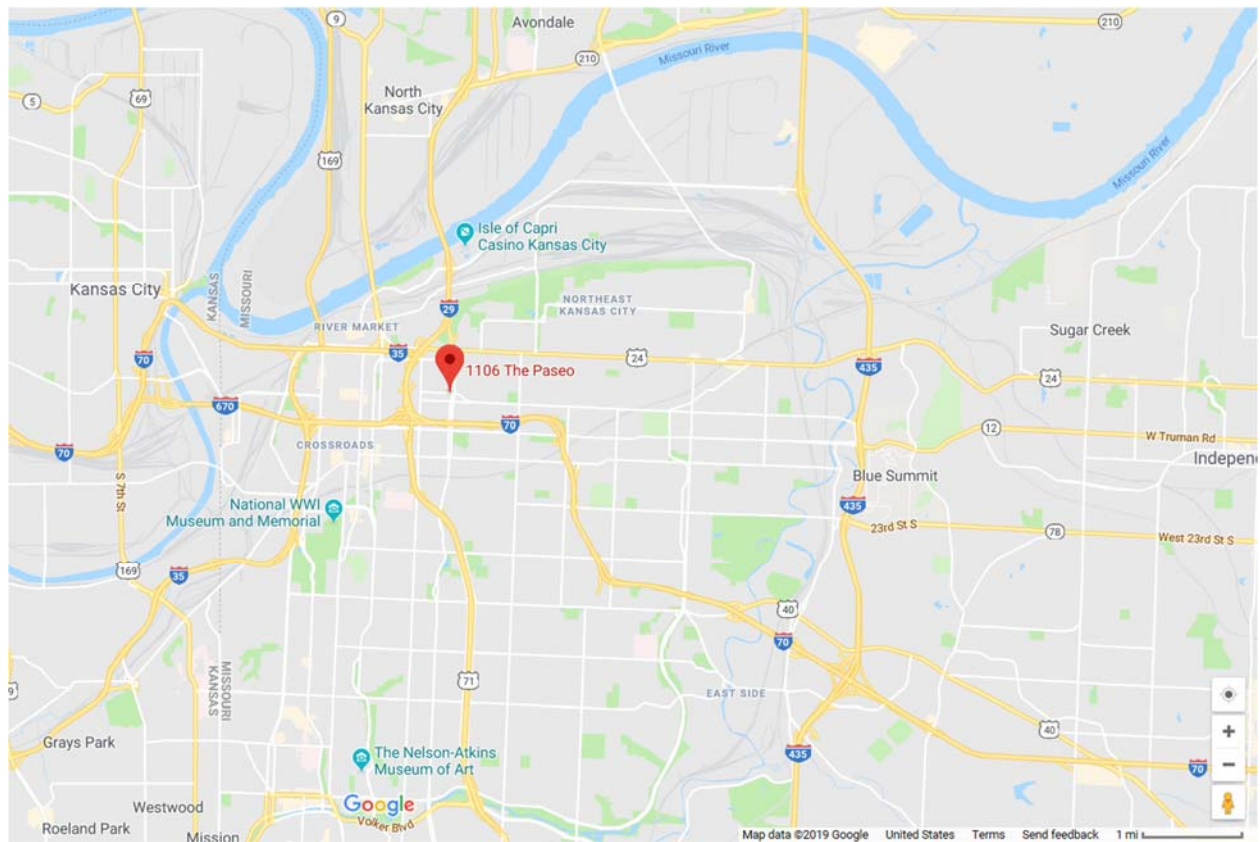


Figure 1: Approximate Location of Incident (Source: Google)

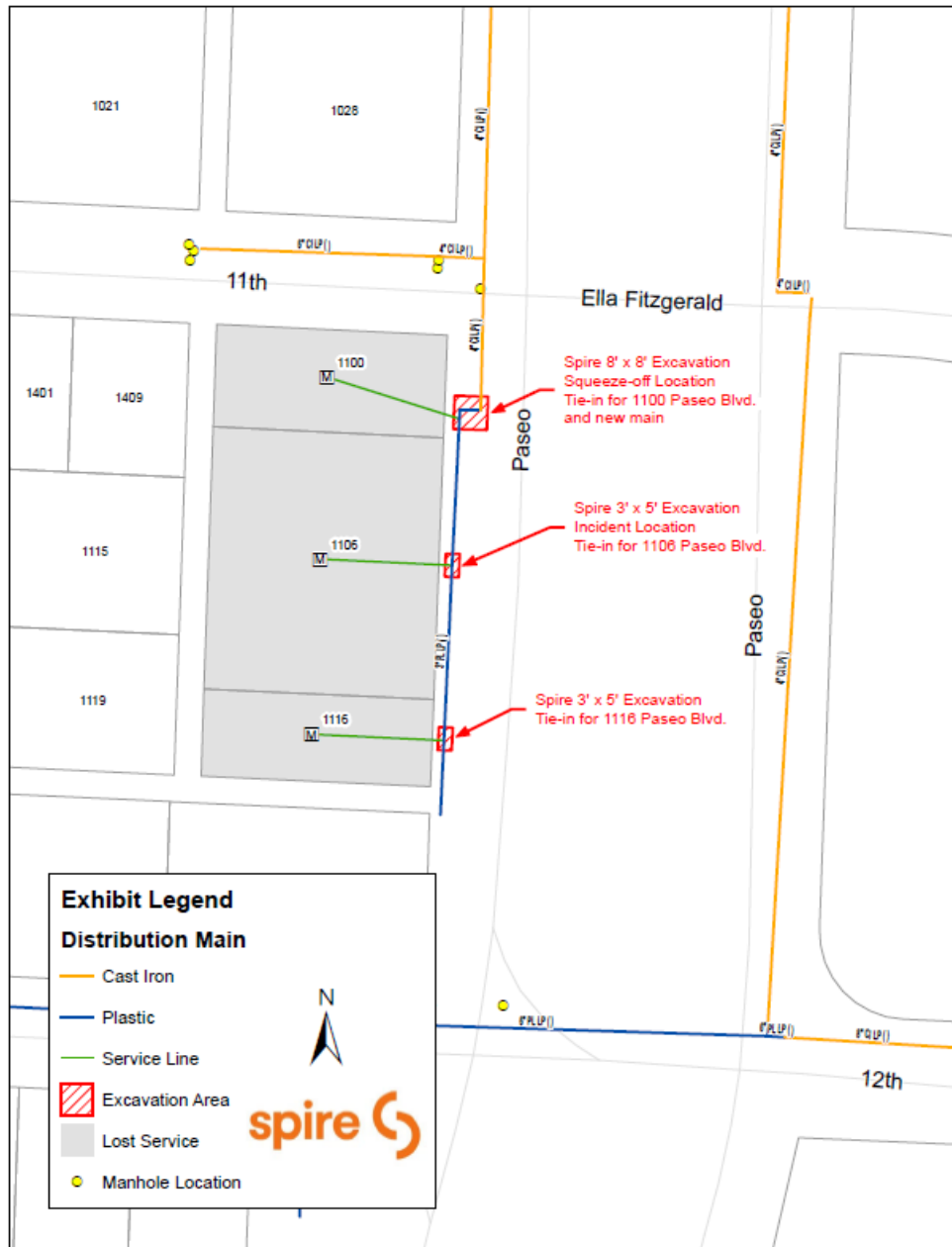


Figure 2: Schematic Representation of Spire Mains and Service Lines in the Incident Vicinity. A Note indicates a 3-foot by 5-foot Excavation at the Tie-In Location for the Service Line to 1106 to the Main along Paseo (Source: Spire)