

Taum Sauk Pumped Storage Energy Center

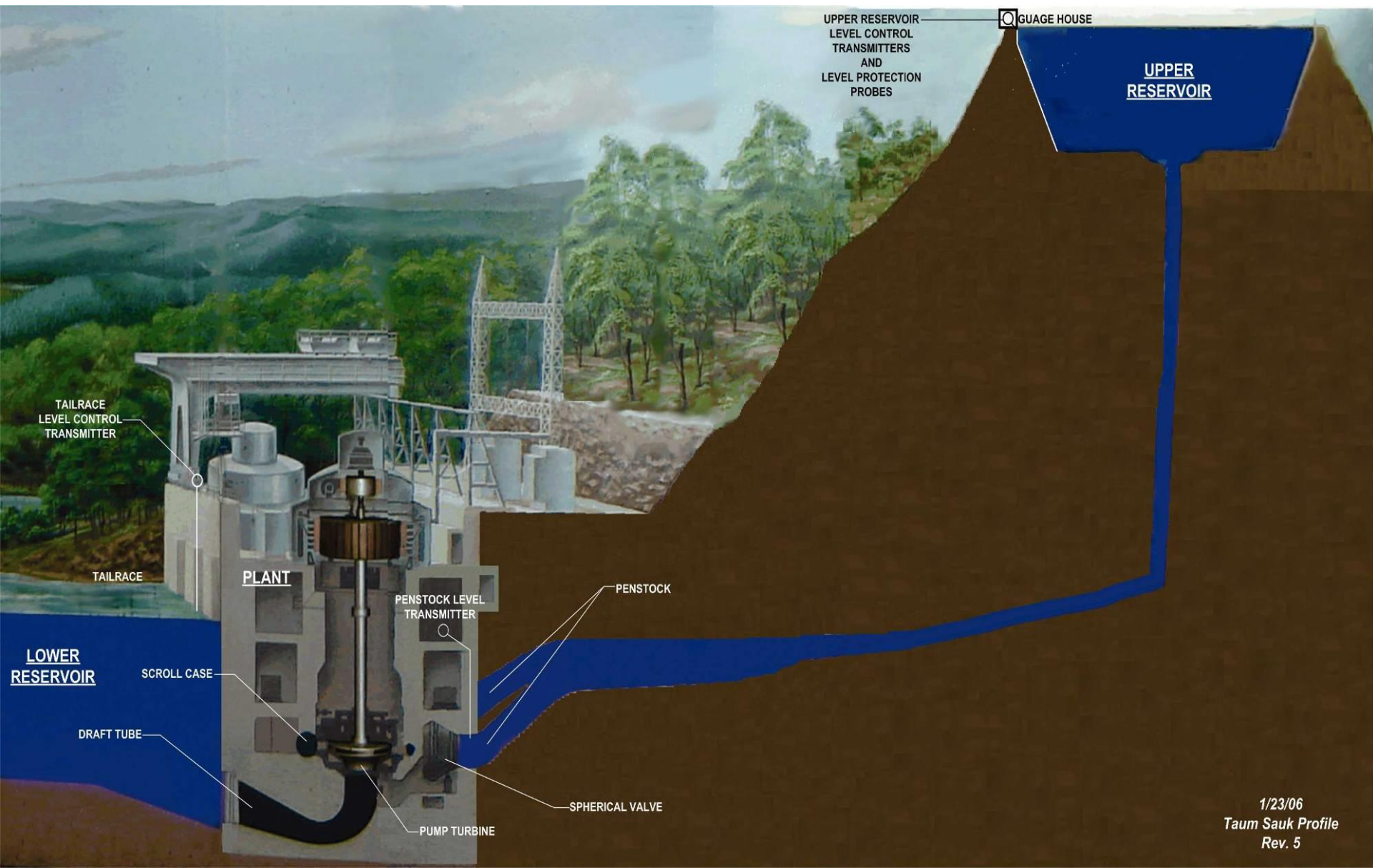
Warren A. Witt
Director of Hydro Operations
Ameren Missouri



AMEREN HYDRO GENERATION

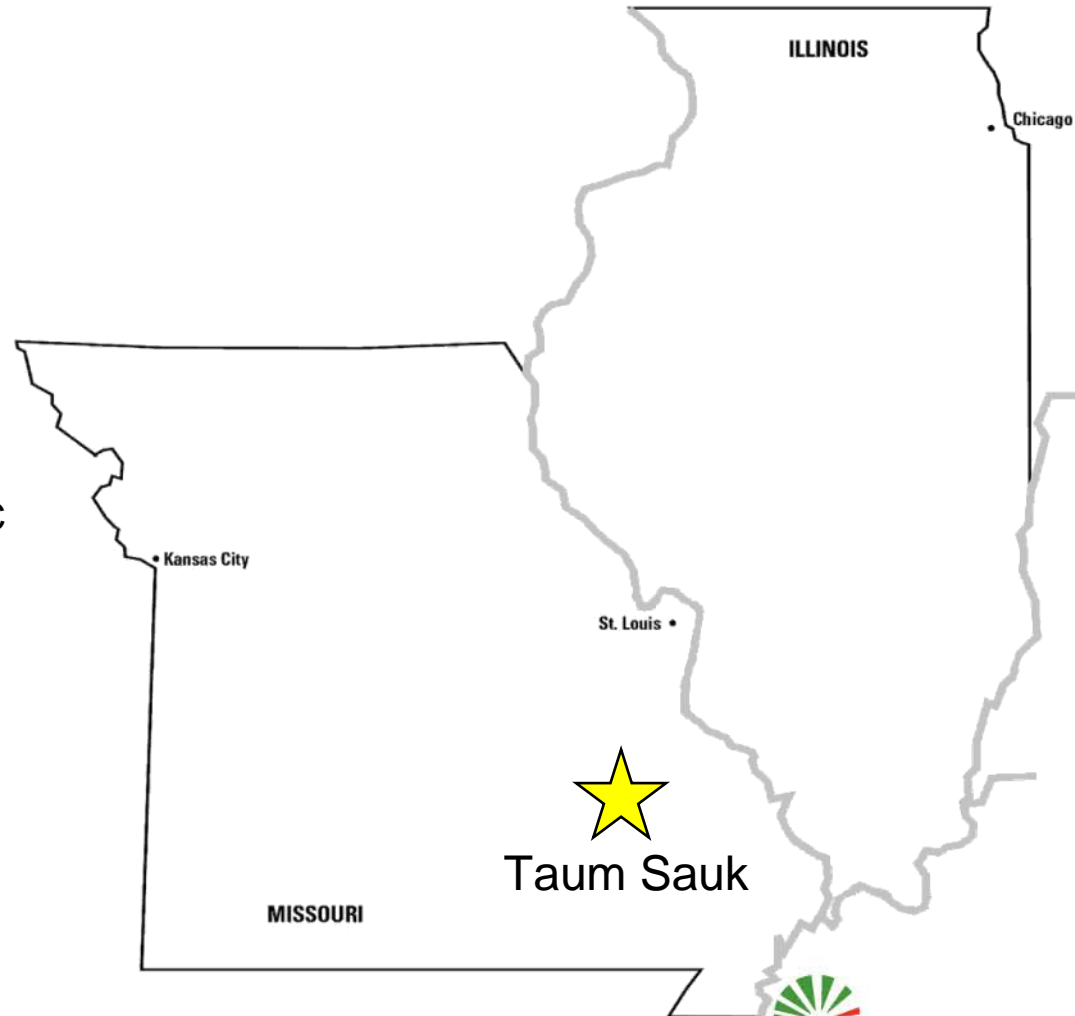
- Keokuk Energy Center
 - 15 units, 140 MW, 102 years old
- Osage Energy Center
 - 8 units, 250 MW, 84 years old
- Taum Sauk Pumped Storage Energy Center
 - 2 units, 440 MW, 52 years old
- ~3% of Ameren generation

PUMPED STORAGE OPERATION OVERVIEW

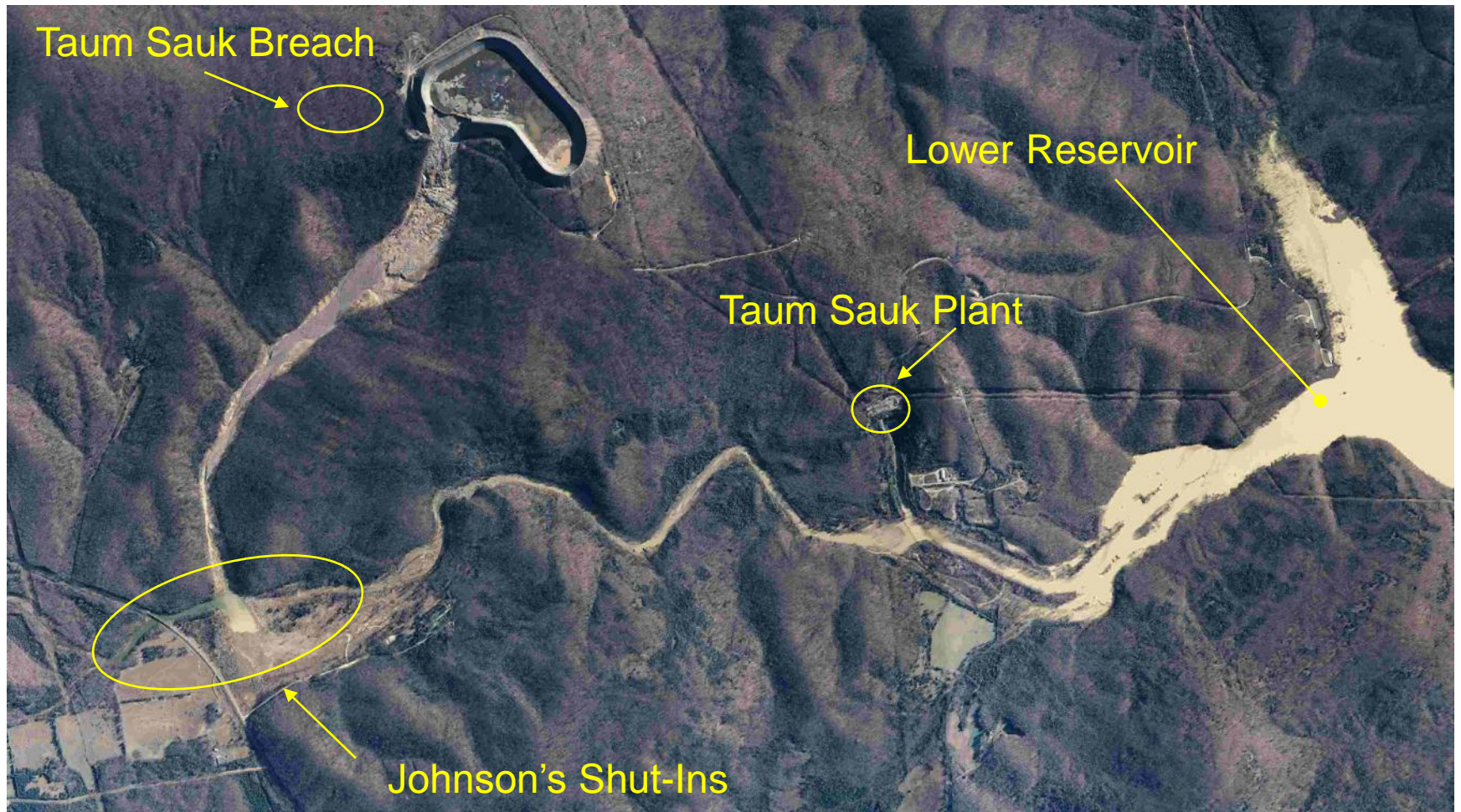


TAUM SAUK BASICS

- ❑ Location: Reynolds County, Missouri
- ❑ Production Capacity: 440 MW
- ❑ Maximum Operating Head: 860 ft
- ❑ Number of Units: 2 pump turbines
- ❑ Began Operation: 1963
- ❑ Reservoir Size:
 - Upper: 51 acres
 - Lower: 370 acres
- ❑ Type:
 - Upper: Concrete Gravity—Sym. RCC
 - Lower: Concrete Gravity
- ❑ Height:
 - Upper: Approx. 125 ft above bedrock
 - Lower: 55 ft
- ❑ Length:
 - Upper: 6800 ft
 - Lower: 390 ft



INCIDENT SITE



WATER LEVEL CONTROL SYSTEMS

- **Level Control – Normal Operations**
 - **Low & High Probes**
 - Differential Pressure & Radar
 - Run-time Checks
- **Level Protection**
 - **High Level & High-High Level Probes**
 - Conductivity
 - Mechanical Float Switch
- **Continuous Video Camera & Staff Gage**
 - Including adequate lighting
- **Overflow Release Structure (ORS)**
 - Ultrasonic Gap Switch
- **Redundant Power Systems, Including a UPS**

UR WARRICK
CABINET 1

UR WARRICK
CABINET 2

UR WARRICK
CABINET 3

WARNING
DANGER OF ELECTRIC SHOCK
DO NOT OPEN THIS CABINET
UNLESS YOU ARE
A QUALIFIED ELECTRICIAN

WARNING
DANGER OF ELECTRIC SHOCK
DO NOT OPEN THIS CABINET
UNLESS YOU ARE
A QUALIFIED ELECTRICIAN

WARNING
DANGER OF ELECTRIC SHOCK
DO NOT OPEN THIS CABINET
UNLESS YOU ARE
A QUALIFIED ELECTRICIAN

WARNING
DANGER OF ELECTRIC SHOCK
DO NOT OPEN THIS CABINET
UNLESS YOU ARE
A QUALIFIED ELECTRICIAN

811-814

811-815

811-813

811-816

811-817

811-818

811-819

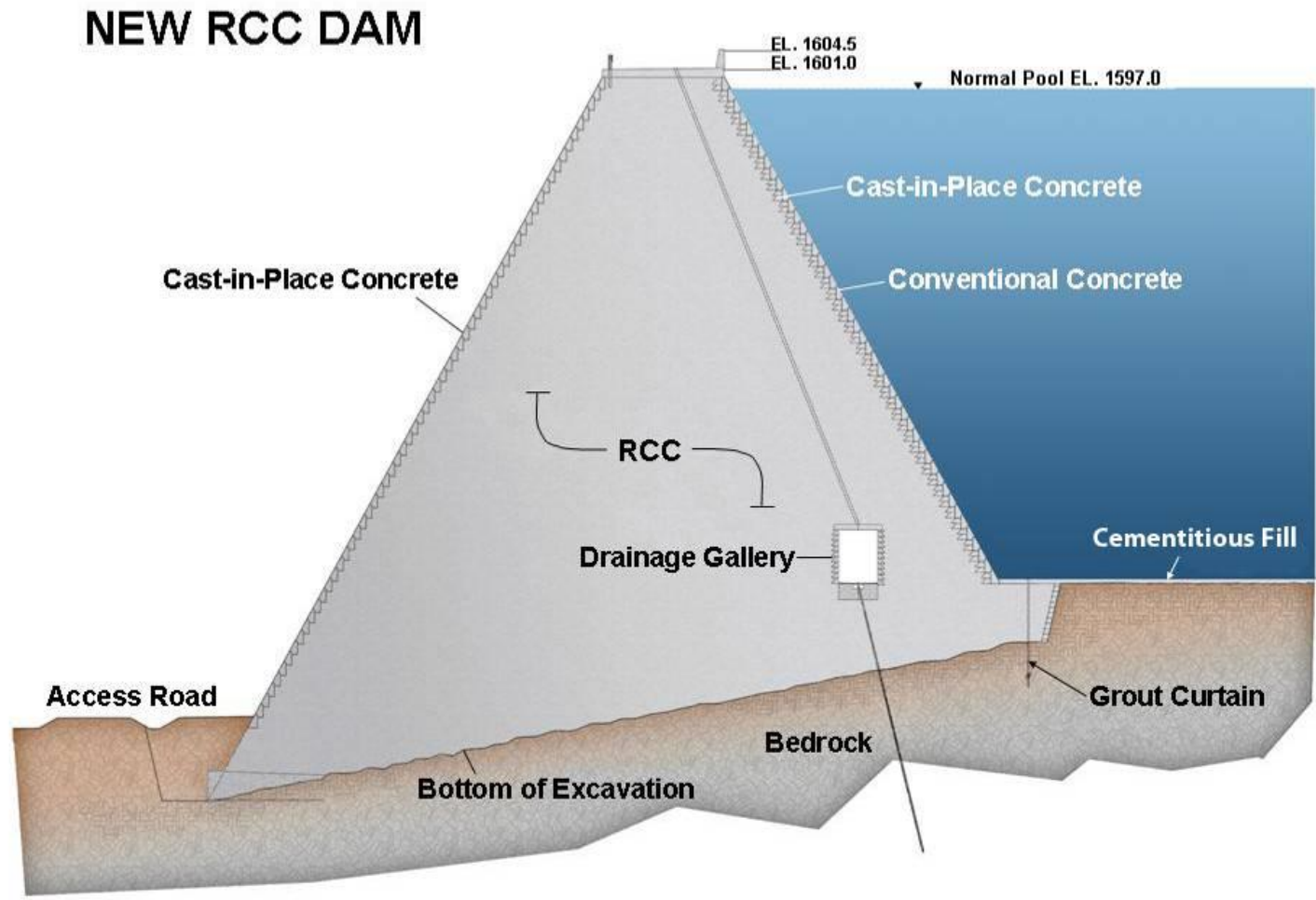
WARNING
DANGER OF ELECTRIC SHOCK
DO NOT OPEN THIS CABINET
UNLESS YOU ARE
A QUALIFIED ELECTRICIAN



02/06/2010 11:33

150246 X
29

DESIGN CROSS SECTION



FOUNDATION EXCAVATION



AGGREGATE PRODUCTION



04/11/2008 07:34

Ozark crushed and stockpiled coarse and fine aggregate in the upper reservoir bowl area.

ON-SITE RCC BATCH PLANTS



12/29/2007

UPPER RESERVOIR OCTOBER 29, 2008



COMPLETED REBUILD NOVEMBER, 2009



UPPER RESERVOIR MILESTONES

- **Breach occurred December 14, 2005**
- **FERC authorization to reconstruct the Upper Reservoir Dam on August 15, 2007**
- **Initial RCC placement October 10, 2007**
- **Final RCC placement November 2009 (2,838,216 C.Y. RCC)**
- **Total concrete required was 3,200,640 C.Y.**
- **Over 800 personnel on-site at height of construction**
- **First filling of the Upper Reservoir on February 27, 2010**
- **Plant returned to commercial operation on April 15, 2010**



TAUM SAUK DAM VS. HOOVER DAM

Taum Sauk Dam

- **Total Concrete – 3.2 Million Cubic Yards**
- Total Cement Used – 1.1 Million Barrels
- Total Excavation – 4.6 Million Cubic Yards
- Personnel at Height – 800
- Construction Duration – 2 Years
- Total Height – Approx. 100 Feet



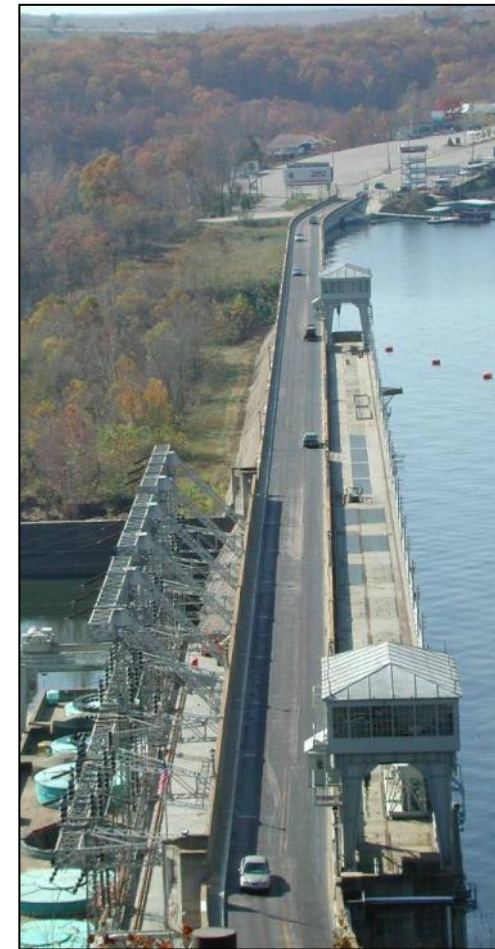
Hoover Dam

- **Total Concrete – 3.25 Million Cubic Yards**
- Total Cement Used – 5 Million Barrels
- Total Excavation – 1.76 Million Cubic Yards
- Personnel at Height – 5,200
- Construction Duration – 2 Years
- Total Height – 726.4 Feet



CHANGES IN AMEREN AFTER INCIDENT

- Settlement agreement between Ameren and FERC required Ameren to implement a Dam Safety Program
- Increased awareness of potential dam hazards
- Developed computerized commitment tracking system
- Renewed dedication to dam safety at all facilities
- QMS Implementation



TAUM SAUK RECENT ACTIVITIES

- Complete electrical systems upgrade (ICE) during rebuild outage
- Unit 1 generator failure in June, 2011
 - Returned to service in April, 2012 (10 months)
- Fall 2013 Outage
 - Rewound Unit 2 generator, completed Feb. 2014
 - Larger servomotors to address wicket gate (turbine ctrl valve) operation
 - Penstock inspection, first drain of upper reservoir
 - Replaced inlet valve seals on both units
 - Scroll case weld repairs
- Summer 2015 Outage
 - Unit 1 Turbine Inlet Valve (TIV) seal wiped
 - Requires draining the upper reservoir to repair (both units out of service)

NEW TAUM SAUK LICENSE – JULY 2014

- Original license 1960 – 2010
- New license is for 30 years, 2014-2044
- New plans required, coordinate with MDC, MDNR, USFWS
 - Water Management Plan
 - Bat Management
 - Fish Recovery
 - Historic Property Management
 - Recreation Management
 - Rock and Sediment Management

NEW TAUM SAUK LICENSE

- Annual requirements
 - Water Management report
 - Two USGS gauge payments
 - Fish stocking and fish habitat report
 - Upper and Lower Reservoir re-vegetation report
 - Annual FERC administration fee
 - Rock and Sedimentation report
- Modifications required
 - Revise upper reservoir lighting
 - Add fish habitat
 - Remove construction parking lot structures
 - Finalize building plans (security, museum, visitor center)