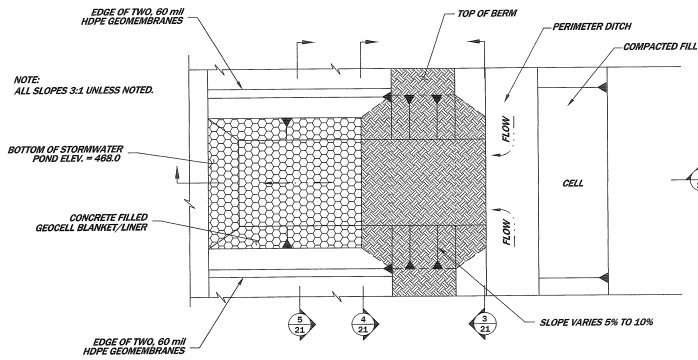
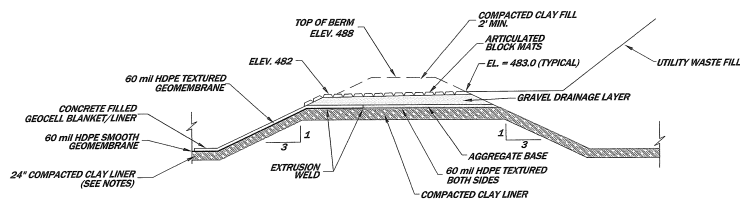


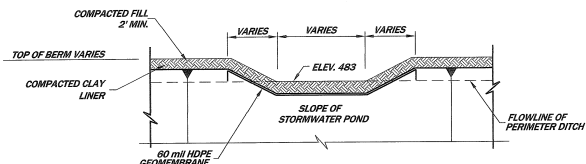
PRINT DIST.			
REVISIONS			
REV.	W.O.	SYM	



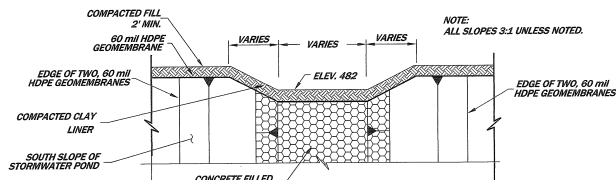
1 21 PLAN - STORMWATER POND INFLUENT STRUCTURE (TYPICAL)
N.T.S.



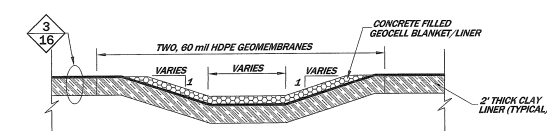
2 21 SECTION - STORMWATER POND INFLUENT STRUCTURE (TYPICAL)
N.T.S.



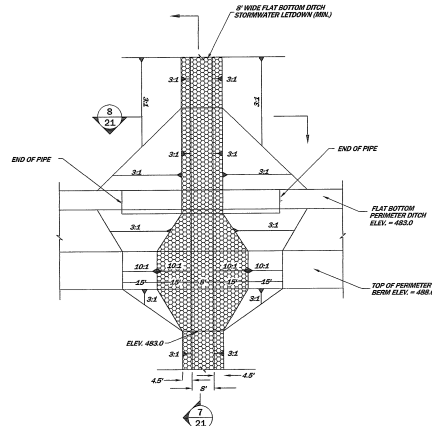
3 21 PROFILE - STORMWATER POND INFLUENT STRUCTURE (TYPICAL)
N.T.S.



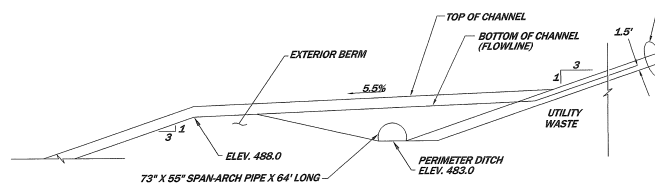
4 21 PROFILE - STORMWATER POND INFLUENT STRUCTURE (TYPICAL)
N.T.S.



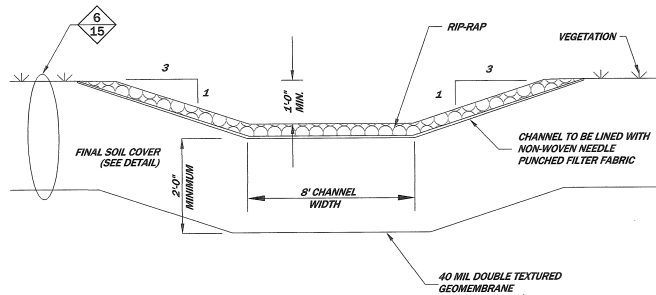
5 21 SECTION - STORMWATER POND INFLUENT STRUCTURE (TYPICAL)
N.T.S.



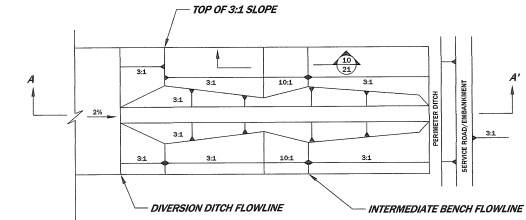
6 21 PLAN - LETDOWN CHANNEL AT PERIMETER BERM CLOSURE CONDITION
N.T.S.



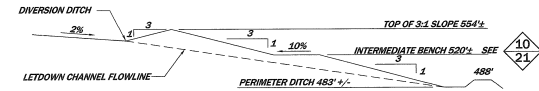
7 21 SECTION - LETDOWN CHANNEL AT PERIMETER BERM
N.T.S.



8 21 LETDOWN CHANNEL CROSS SECTION (TYPICAL)
N.T.S.



LETDOWN CHANNEL PLAN VIEW DETAIL (TYPICAL)
N.T.S.



NOTE: MINIMUM 2" OF FINAL COVER BELOW LETDOWN

LETDOWN CHANNEL SECTION A-A' (TYPICAL)
N.T.S.

9 21 LETDOWN CHANNEL DETAIL (TYPICAL)
N.T.S.

8 21

NOTE: MINIMUM 2" OF FINAL COVER BELOW INTERMEDIATE BENCH

10 21 SIDE SLOPE INTERMEDIATE BENCH SECTION DETAIL
N.T.S.

PERMIT DRAWINGS - NOT FOR CONSTRUCTION



CALL BEFORE YOU DIG - DRILL - BLAST
1-800-344-7483
(TOLL FREE)
MISSOURI ONE CALL SYSTEM, INC.

THE ENGINEER WHOSE SIGNATURE AND PERSONAL SEAL APPEAR HEREON ASSUMES RESPONSIBILITY ONLY FOR WHAT APPEARS ON THIS PAGE AND DISCLAIMS LIABILITY FOR SECTION 327.411. HE/SHOULD NOT BE RESPONSIBLE FOR ANY OTHER PLANS, SPECIFICATIONS, ESTIMATES, REPORTS OR OTHER DOCUMENTS OR INSTRUMENTS NOT SEALED BY THE UNDERSIGNED ENGINEER RELATING TO OR INTENDED TO BE USED FOR ANY PART OR PARTS OF THE PROJECT TO WHICH THIS PAGE REFERS.		REITZ & JENS, INC. CONSULTING ENGINEERS 311 N. 10TH ST., SUITE 200 ST. LOUIS, MISSOURI 63103 314.988.4333 (DAILY) 314.988.6177 (PM)		GREDELL Engineering Resources, Inc. ENVIRONMENTAL ENGINEERING 1000 N. 10TH ST., SUITE 200 ST. LOUIS, MISSOURI 63103 314.988.4333 (DAILY) 314.988.6177 (PM)	
DRAWN: W.J.A. (S.E.) CHG: R.L.R. (S.E.) SUPV: T.R.G. (S.E.) APPD: T.R.G. (S.E.)		LOCATION: 001009 CLASS: 02010 REV: 0		PREPARED FOR: Ameron SHEET 21 PROPOSED UTILITY WASTE LANDFILL STORMWATER DRAINAGE DETAILS LABADIE ENERGY CENTER ST. LOUIS, MISSOURI JANUARY 2013	