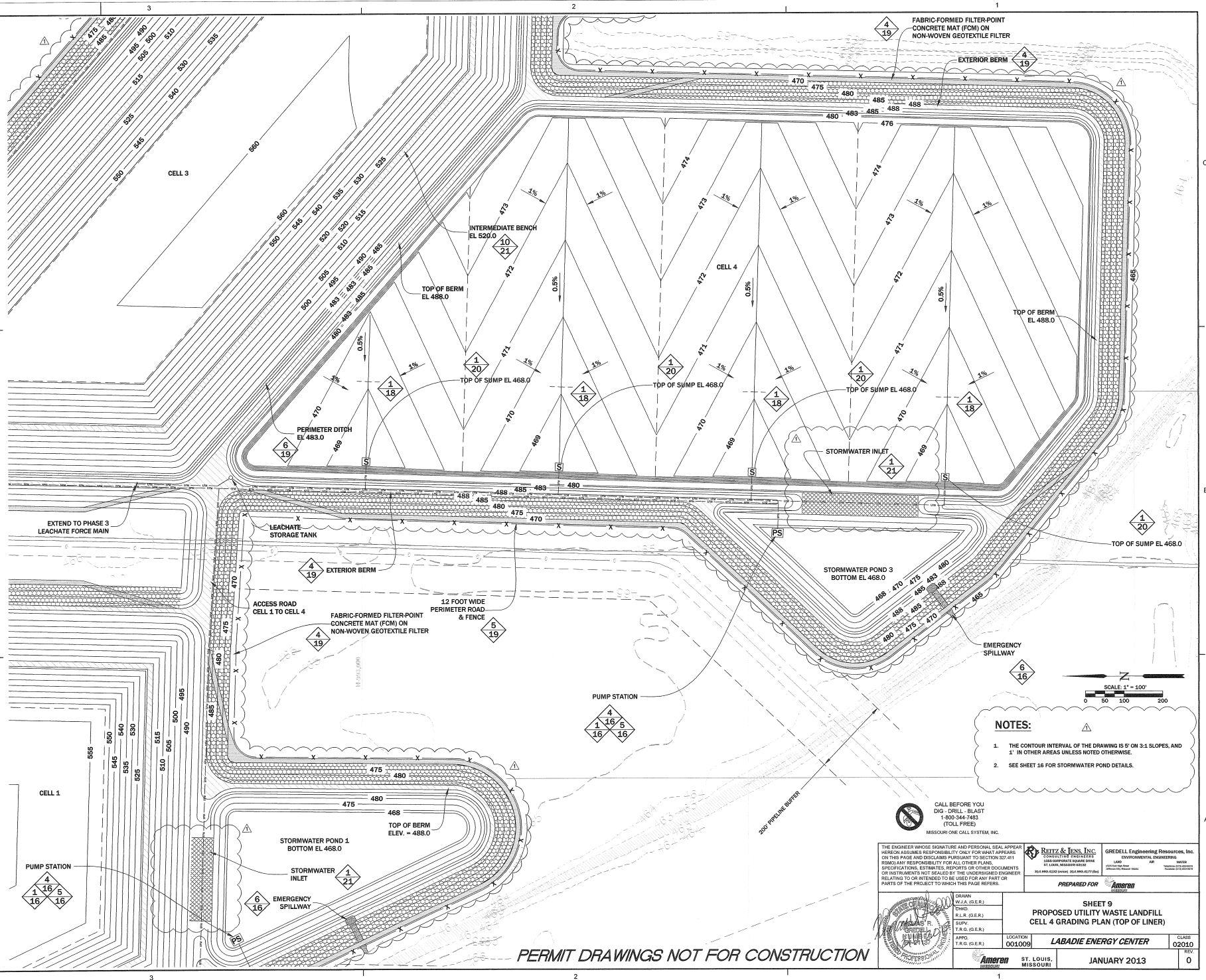


PRINT	DATE
REV	W.O. SYM
1	

ON THIS DRAWING, POINTS TO CENTER TOP OF BERM AND POINTS TO BOTTOM WATER INLET REMOVE BOTTLES



- NOTES:**
1. THE CONTOUR INTERVAL OF THE DRAWING IS 5' ON 3:1 SLOPES, AND 1' IN OTHER AREAS UNLESS NOTED OTHERWISE.
 2. SEE SHEET 16 FOR STORMWATER POND DETAILS.

CALL BEFORE YOU DIG / DRILL / BLAST
 1-800-344-7453
 (TOLL FREE)
 MISSOURI ONE CALL SYSTEM, INC.

THE ENGINEER WHOSE SIGNATURE AND PERSONAL SEAL APPEAR HEREON ASSUMES RESPONSIBILITY ONLY FOR WHAT APPEARS ON THIS PAGE AND DISCLAIMS PURSUANT TO SECTION 307.411, MISSOURI REVISION ACT, ANY RESPONSIBILITY FOR ALL OTHER PLANS, SPECIFICATIONS, ESTIMATES, REPORTS OR OTHER DOCUMENTS, OR INSTRUMENTS NOT SEALED BY THE UNDERSIGNED ENGINEER RELATING TO OR INTENDED TO BE USED FOR ANY PART OR PARTS OF THE PROJECT TO WHICH THIS PAGE REFERS.

REITZ & JENS, INC.
 CONSULTING ENGINEERS
 1800 W. BROADWAY, SUITE 1000
 ST. LOUIS, MISSOURI 63102
 314.486.4332 (PHONE) 314.486.4777 (FAX)

GREDELL Engineering Resources, Inc.
 ENVIRONMENTAL ENGINEERING
 401
 10000 W. BROADWAY, SUITE 1000
 ST. LOUIS, MISSOURI 63102
 314.486.4332 (PHONE) 314.486.4777 (FAX)

PREPARED FOR
Ameron

SHEET 9
 PROPOSED UTILITY WASTE LANDFILL
 CELL 4 GRADING PLAN (TOP OF LINER)

DRAMA (W.A. (S.E.R.))
 CHD (S.E.R. (S.E.R.))
 SUPV. (T.R.S. (S.E.R.))
 APPD. (T.R.S. (S.E.R.))

LOCATION: **LABADIE ENERGY CENTER**
 001009

CLASS: **02010**
 REV: **0**

ST. LOUIS, MISSOURI

JANUARY 2013

PERMIT DRAWINGS NOT FOR CONSTRUCTION