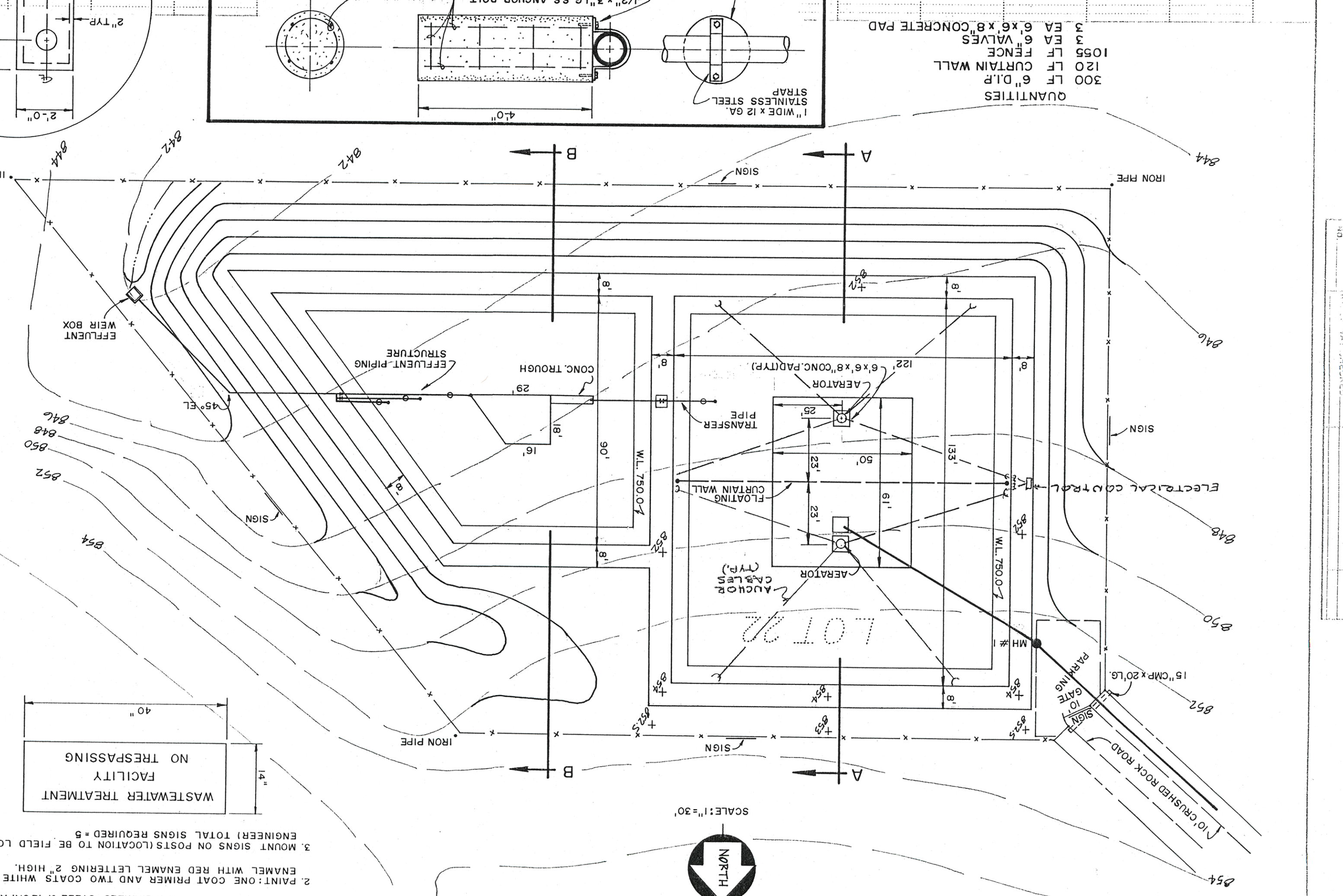
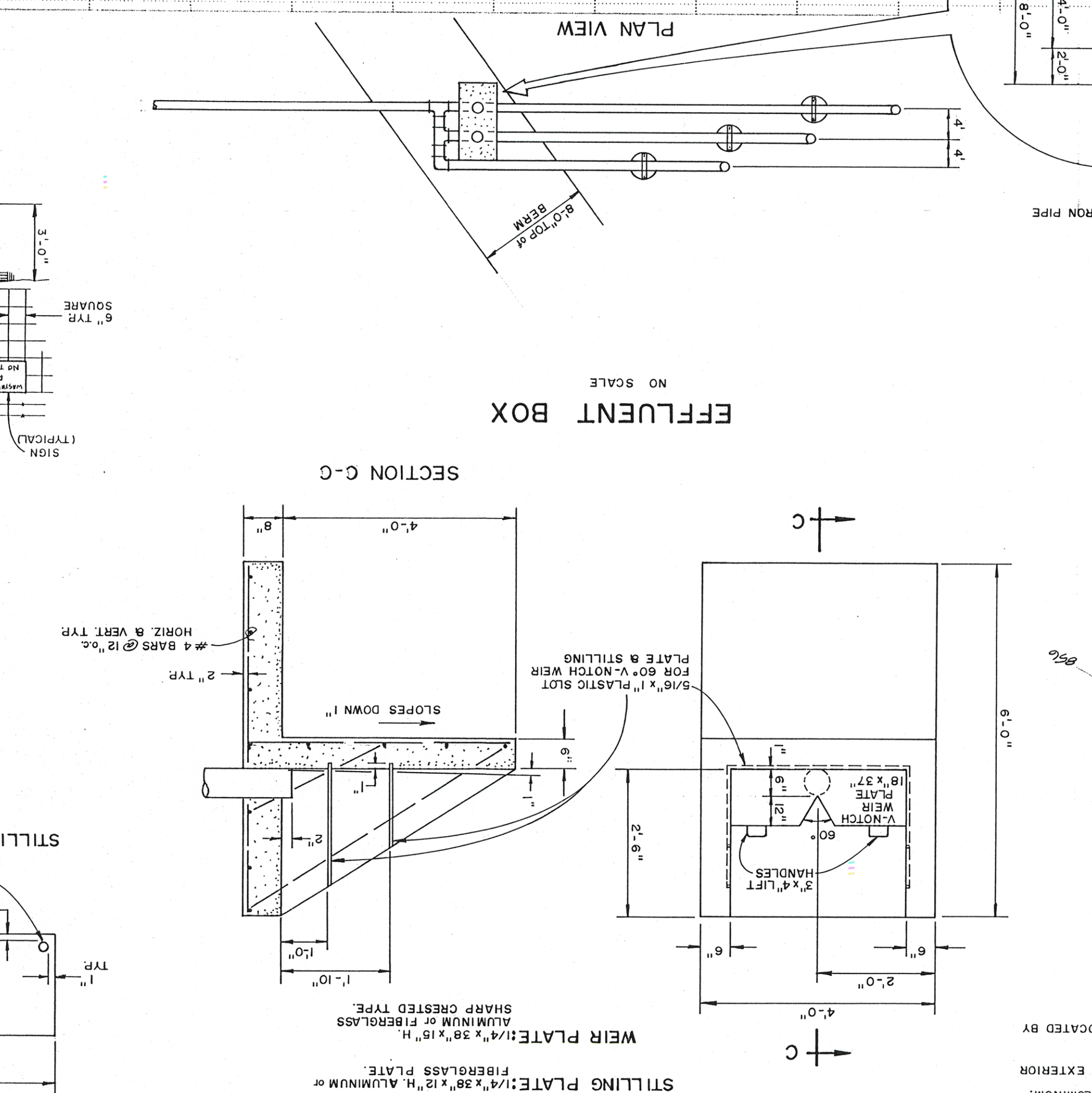
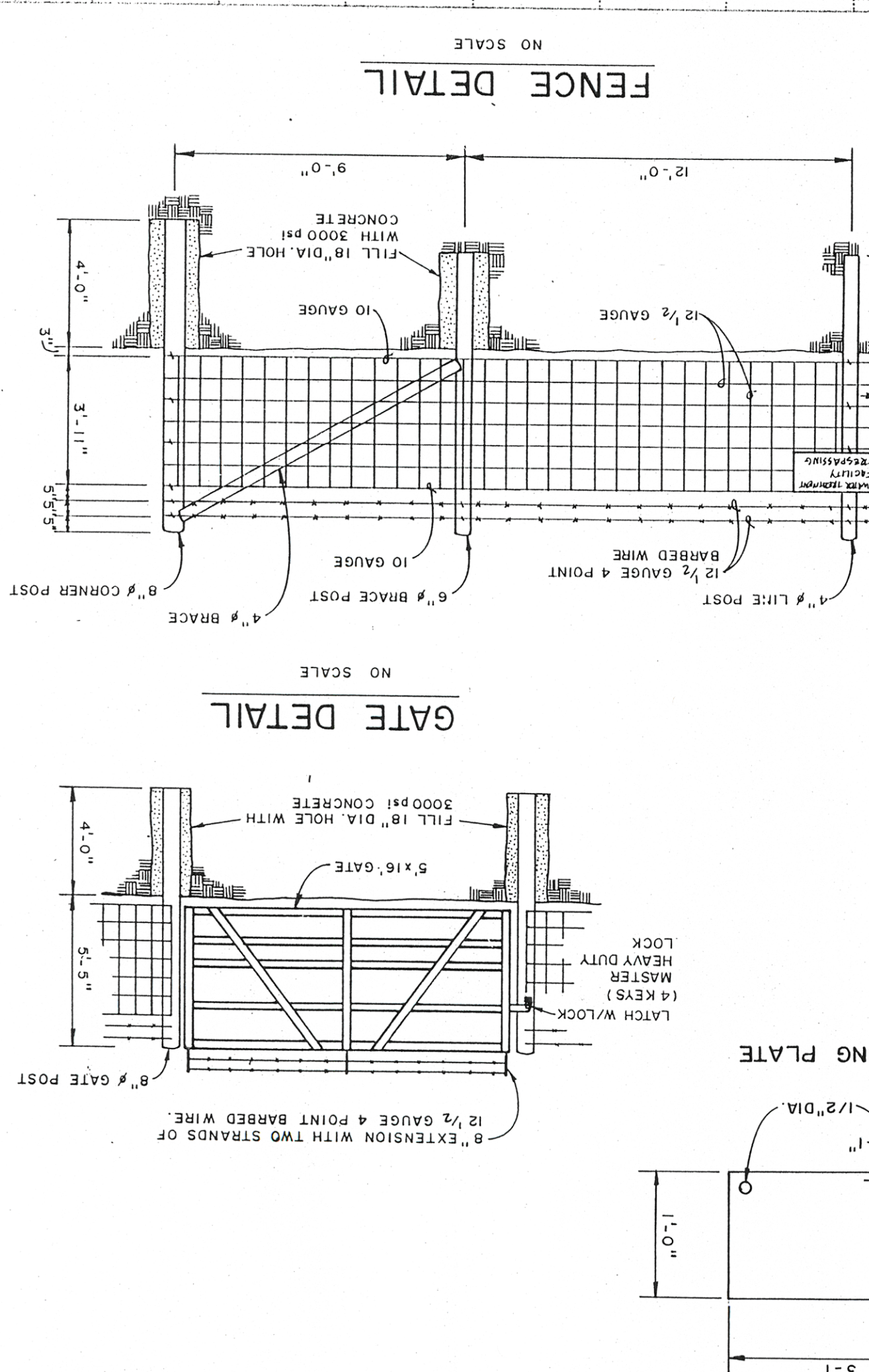
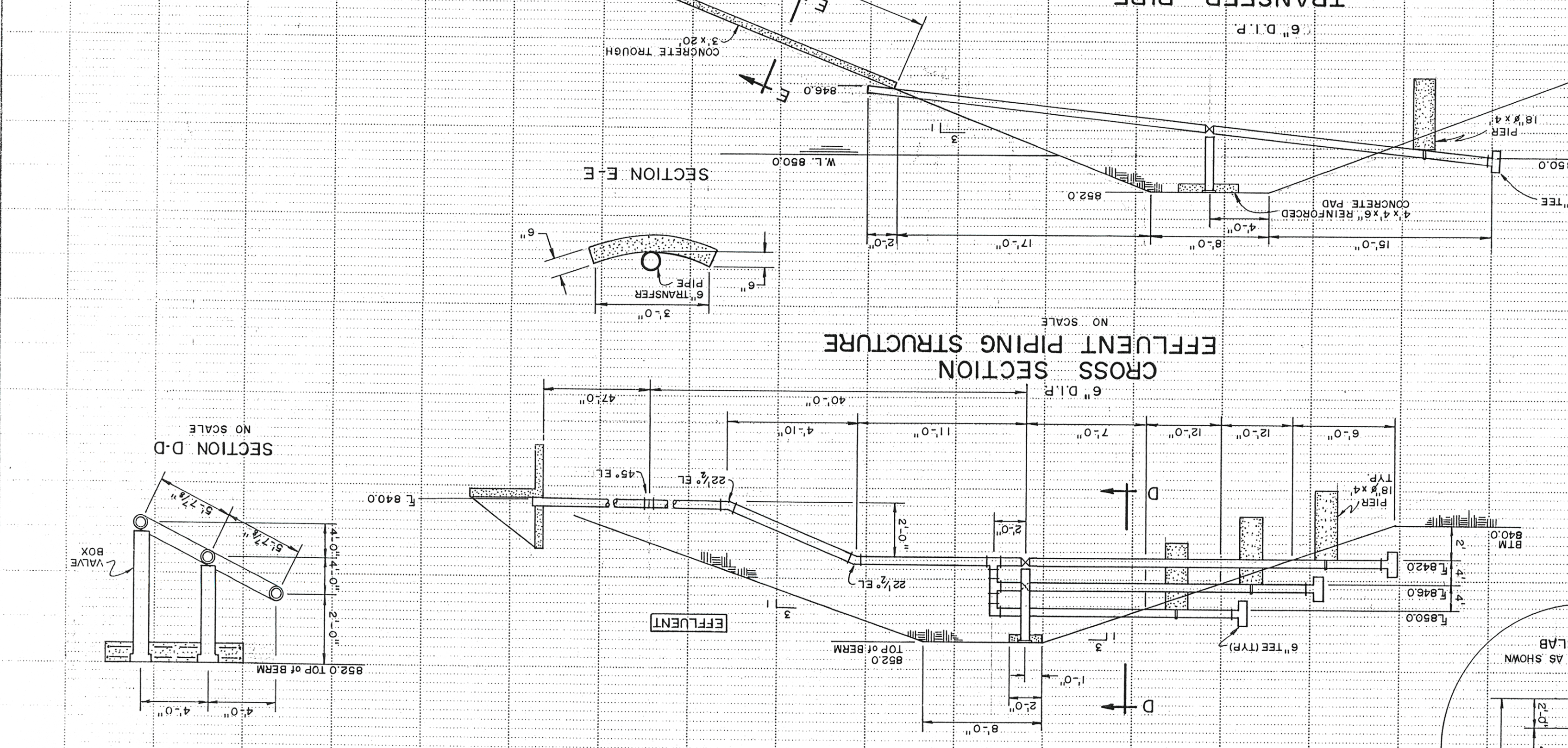
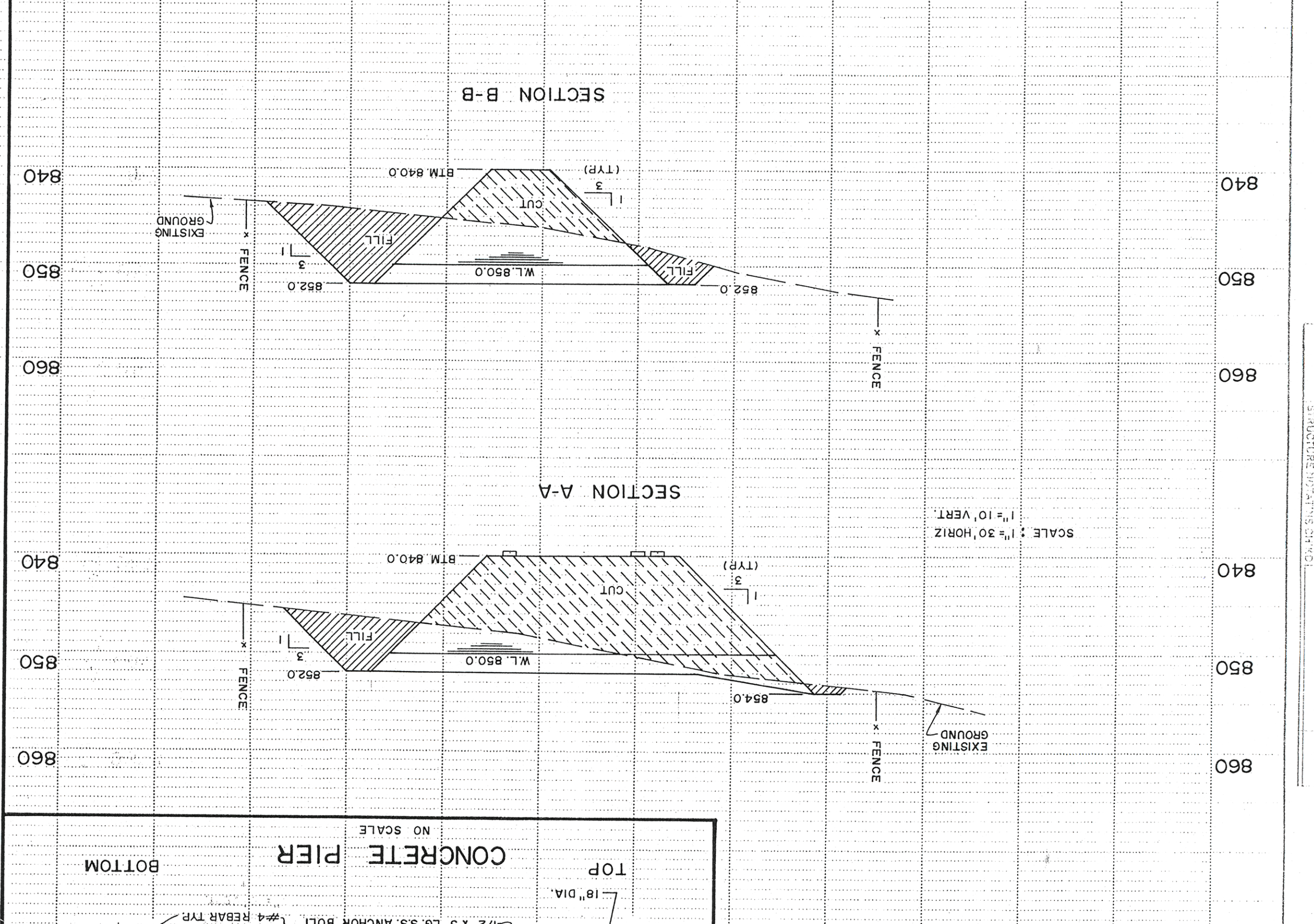


REVISIONS	
Date	By
Description	
App'd by	
SHEET TITLE	
LAGOON DETAILS	
PROJECT ED & SHIRLEY BRIGHT CALLAWAY CO., MO.	
Date	4-17-97
Dr by	MSH
Checked by	MSH
Job no	97602
Sheet	5 of 5
ENGR'S SEAL	MISSOURI 65201
Columbia 300 ST. JAMES ST.	
Missouri 65201	



- NOTES:
1. SIGN MATERIAL: 1/4 GA. GALVANIZED STEEL OR 12 GA. ALUMINUM.
 2. PAINT: ONE COAT PRIMER AND TWO COATS WHITE EXTERIOR ENAMEL WITH RED ENAMEL LETTERING 2" HIGH.
 3. MOUNT SIGNS ON POSTS (LOCATION TO BE FIELD LOCATED BY ENGINEER) TOTAL SIGNS REQUIRED = 5.



QUANTITIES

300	LF	6" D.I.P.
120	LF	CURTAIN WALL
1055	LF	FENCE
3	EA	6" VALVES
3	EA	6" x 6" CONCRETE PAD

PROFILE

Station	840.0
Station	850.0
Station	860.0
Station	870.0
Station	880.0
Station	890.0
Station	900.0
Station	910.0
Station	920.0
Station	930.0
Station	940.0
Station	950.0
Station	960.0
Station	970.0
Station	980.0
Station	990.0
Station	1000.0

PROFILE

Station	840.0
Station	850.0
Station	860.0
Station	870.0
Station	880.0
Station	890.0
Station	900.0
Station	910.0
Station	920.0
Station	930.0
Station	940.0
Station	950.0
Station	960.0
Station	970.0
Station	980.0
Station	990.0
Station	1000.0

FLAT 1-SHEDDLE PLAIN AND PROFH E-CUL-ROF
 MISSOURI 65201
 MISSOURI 65201
 MISSOURI 65201
 MISSOURI 65201