
Part 1 - Appendix 3A1
Evergy Missouri West Reports

Missouri 4 CSR 240-22.030 (2)(D)(3) Reporting Requirements
Load Analysis and Forecasting

(2)(D) For each major class specified pursuant to subsection (2)(A), the utility shall provide , on a seasonal and annual basis for each year of the historical period --

(2)(D)(3) Plots illustrating trends materially affecting electricity consumption over the historical period.

Compliance: See Plots 3A1-1 through 3A1-5 for base-case MO West forecast reports designed to comply with section (2)(D)(3) reporting requirements.

Linked Files:

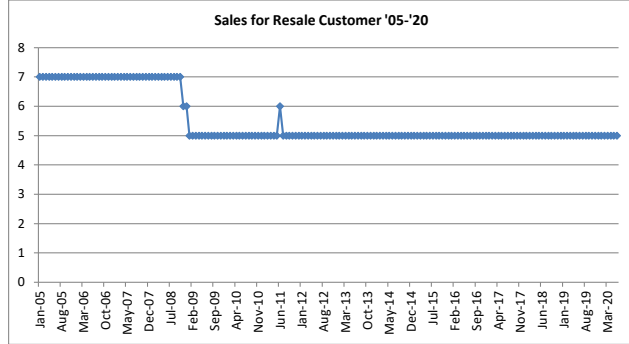
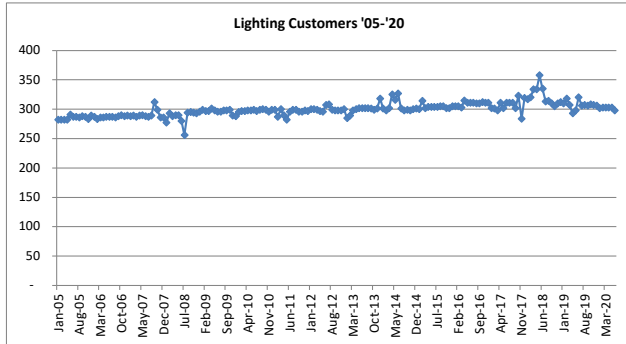
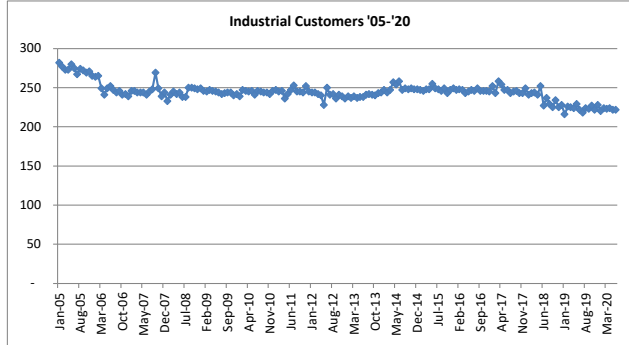
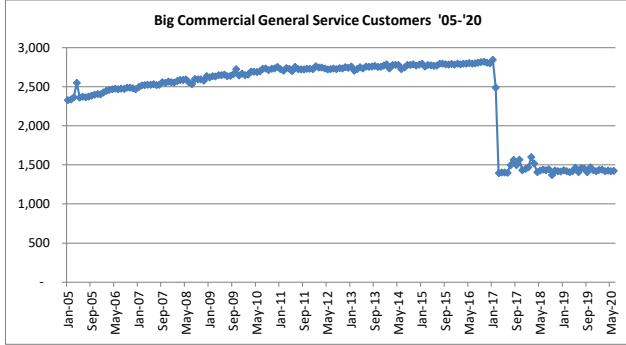
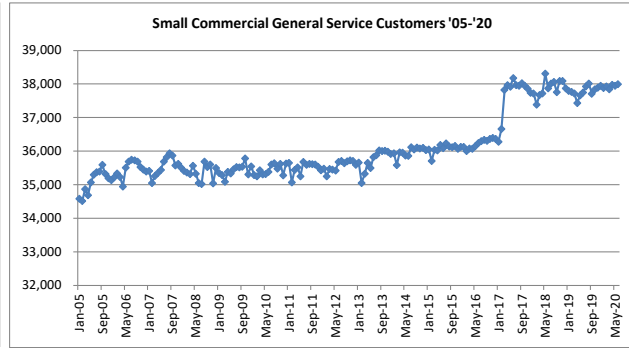
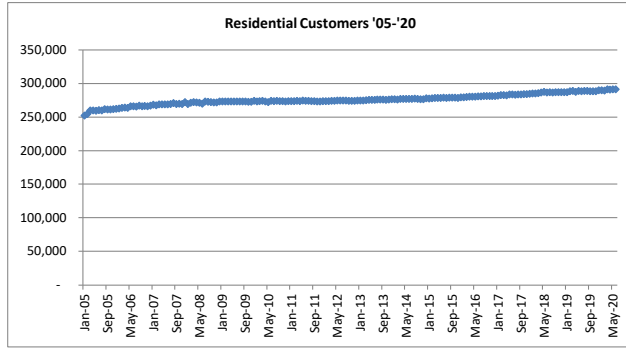
West_2021RES_Datalyzer

West_2021Com_Datalyzer

West_2021IND_Datalyzer

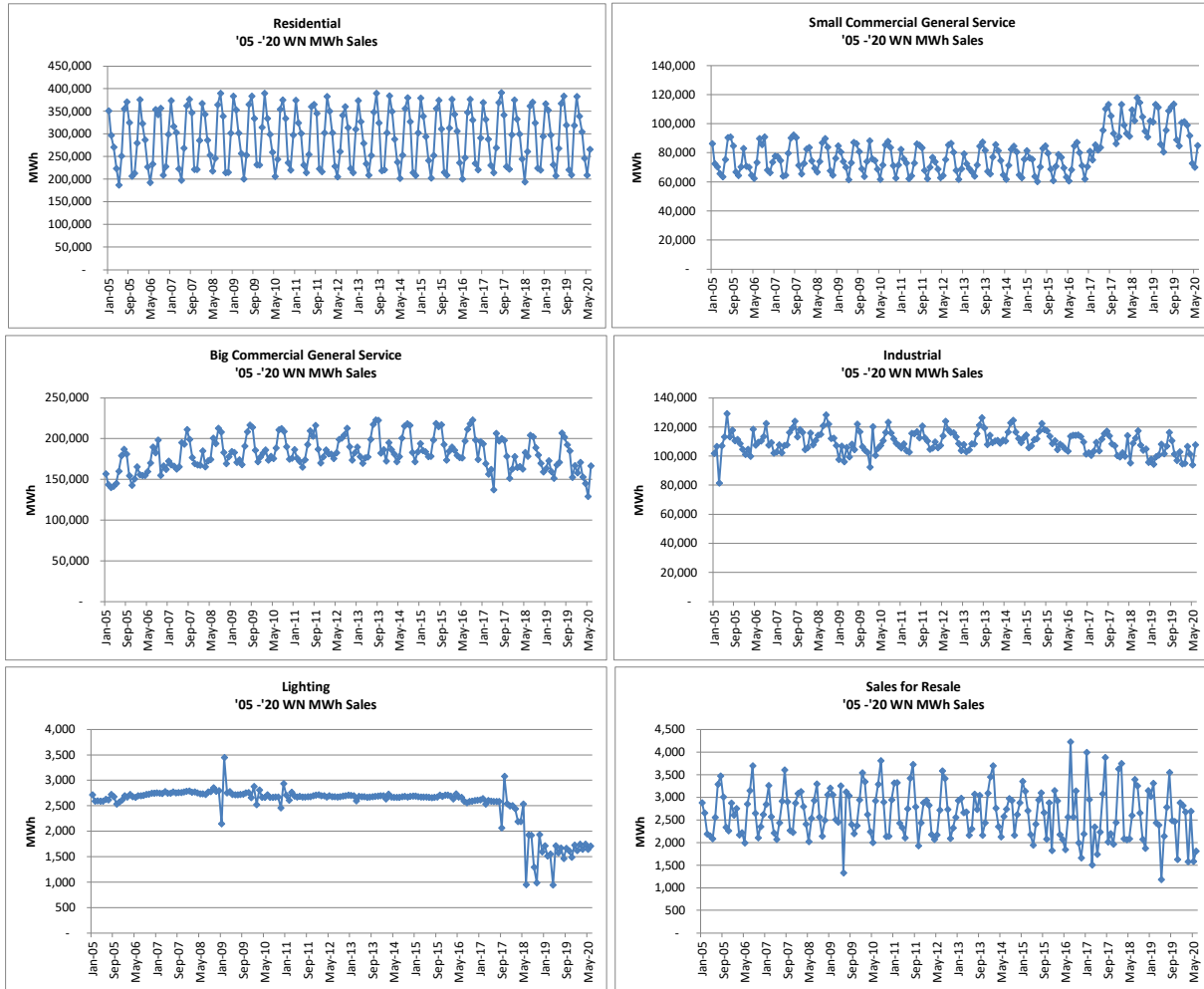
West_2021Other_Datalyzer

Plot 3A1-1 Eversource Missouri West Class Customers



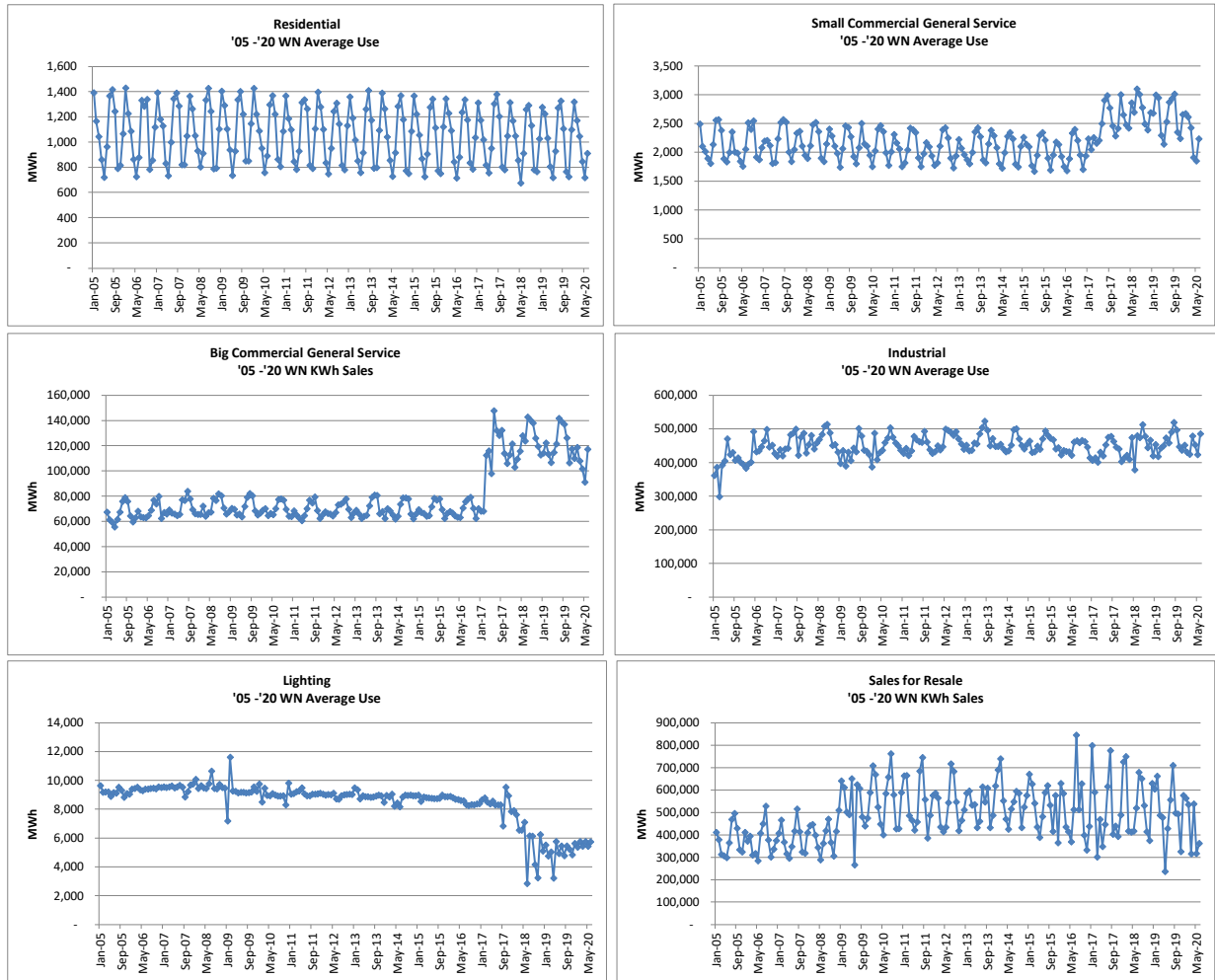
*2017 decline in Big Commercial is due to rate switchers moving to Small Commercial and consolidation.

Plot 3A1-2 Eversource Missouri West Class Weather Normalized MWh Sales



*2017 decline in Big Commercial is due to rate switchers moving to Small Commercial and consolidation.

Plot 3A1-3 Eversource Missouri West Class Weather Normalized Average Use



*2017 increase in average usage in Big Commercial is due to rate switchers moving to Small Commercial and consolidation.

Plot 3A1-4 Every Missouri West Class Weather Normalized Peak Demand (MW)

