



BRUBAKER & ASSOCIATES, INC.

1215 FERN RIDGE PARKWAY, SUITE 208
POST OFFICE BOX 412000
ST. LOUIS, MO 63141-2000
PHONE: 314-275-7007
FAX: 314-275-7036
E-MAIL: bai@consultbai.com
Web Site Address:
<http://www.consultbai.com>

April 24, 2001

Mr. Dale Hardy Roberts
Secretary/Chief Regulatory Law Judge
Missouri Public Service Commission
200 Madison Street
Jefferson City, MO 65101

FILED

APR 30 2001

Re: The Empire District Electric Company,
Missouri PSC Case No. ER-2001-299

Missouri Public
Service Commission

Dear Mr. Roberts:

On April 9, 2001 we served copies of the direct testimony of Maurice Brubaker to all parties on the service list in the above-captioned proceeding. Schedule 1 should have been a color graph. We mistakenly sent this schedule in black and white. Please replace this schedule in each of the 15 copies that were sent to you with the color copies of Schedule 1 that are enclosed.

We apologize for any inconvenience caused by this mistake.

Copies of this corrected schedule have been sent to all parties on the service list.

Very truly yours,

BRUBAKER & ASSOCIATES, INC.

Maurice Brubaker

MEB:cs
#7513/17765
Enclosures

CC: All Parties on Service List

FILED

APR 30 2001

State of Missouri
Before the
Missouri Public Service Commission

Missouri Public
Service Commission

In the Matter of The Empire District Electric)
Company's tariff sheets designed to implement)
a general rate increase for retail electric service)
provided to customers in the Missouri service)
area of the Company)
_____)

Case No. ER-2001-299

SERVICE LIST

Office of the Public Counsel
Governor Office Building
200 Madison Street
Jefferson City, MO 65101

Gary Duffy
Brydon, Swearengen & England P.C.
312 E. Capitol Avenue
Jefferson City, MO 65101

General Counsel
Missouri Public Service Commission
Governor Office Building
200 Madison Street
Jefferson City, MO 65101

The Empire District Electric Company

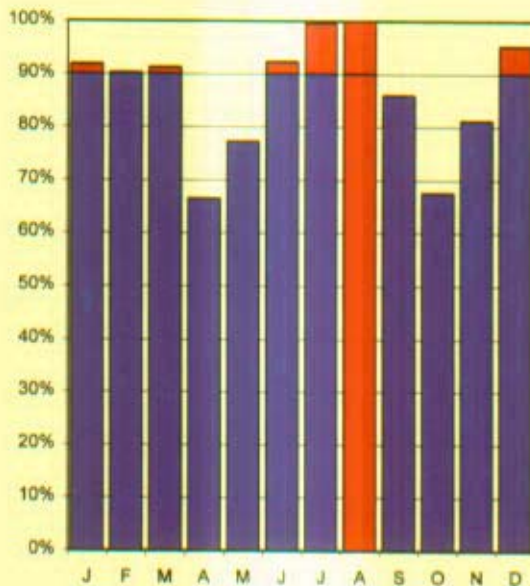
FILED

APR 30 2001

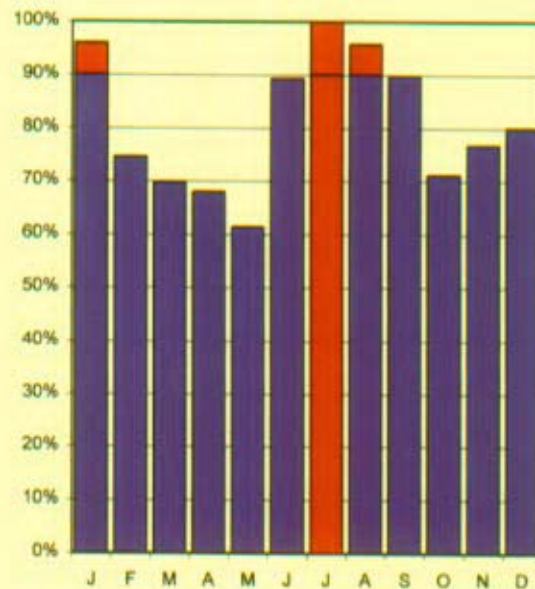
Analysis of Monthly Peak Demands as a Percent of the Annual System Peak for the Fiscal Years 1996 through 1999

Missouri Public
Service Commission

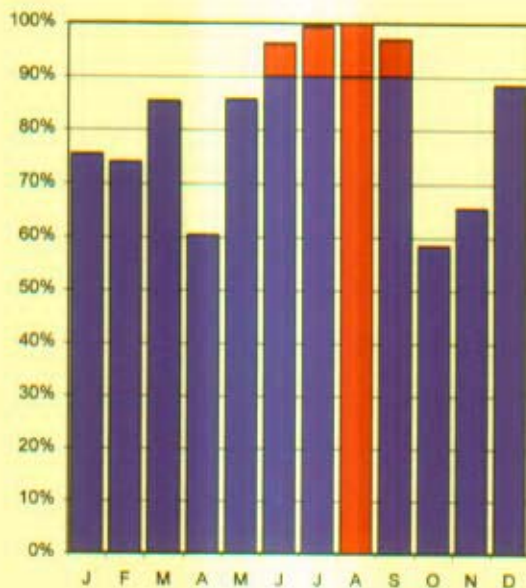
1996



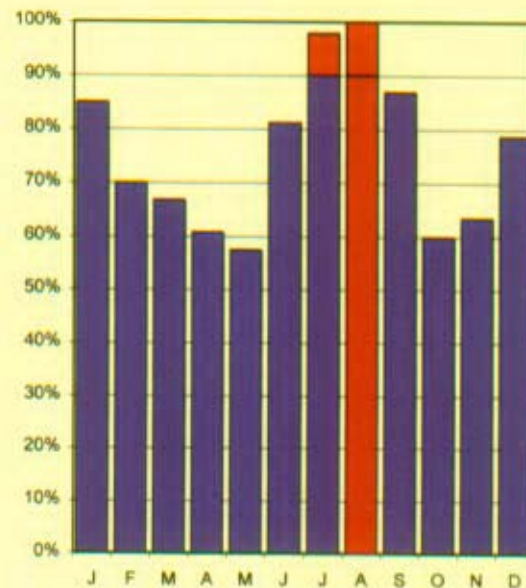
1997



1998



1999



Monthly Peak Demand

Annual System Peak

Peak Months