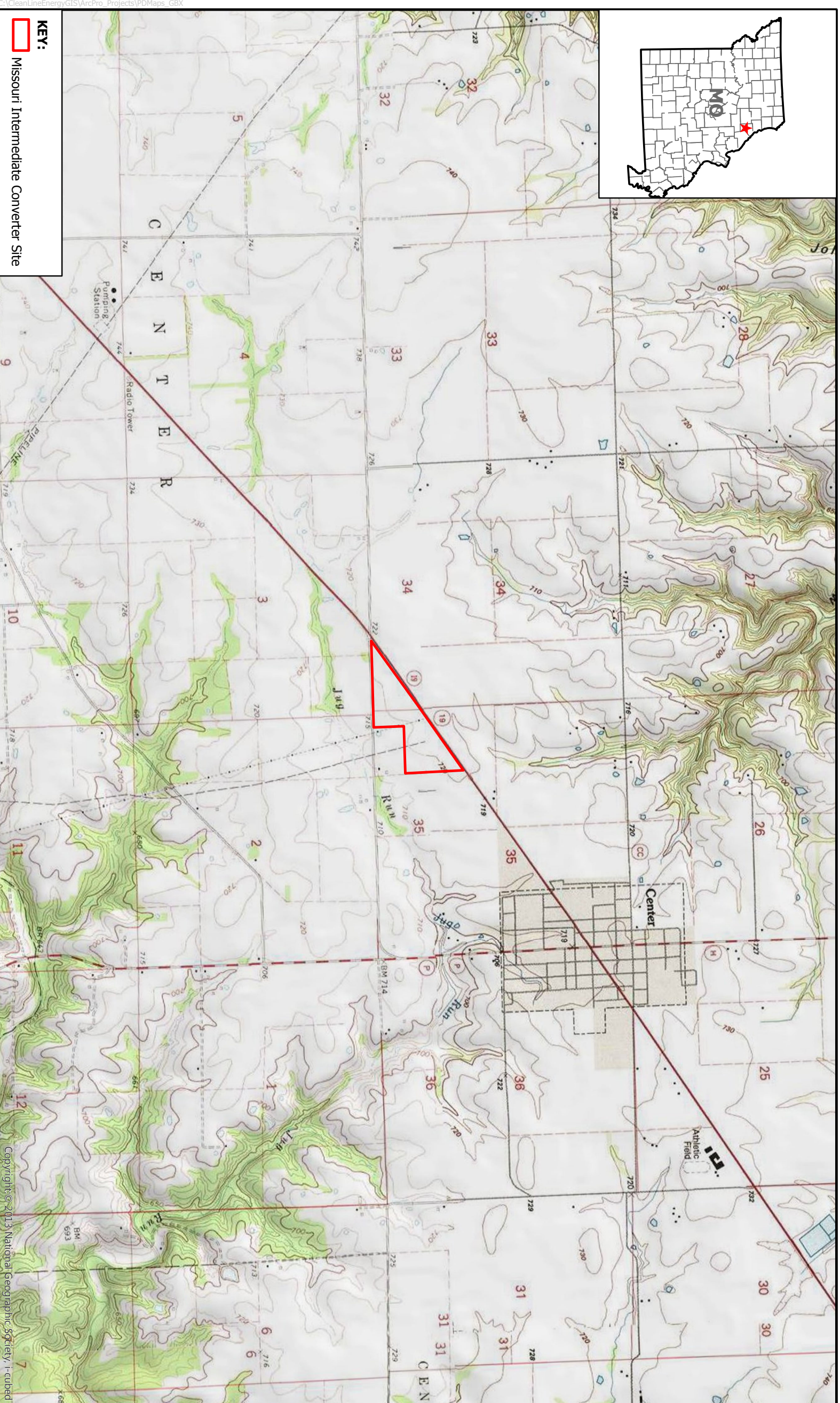


GRAIN BELT EXPRESS

CLEAN LINE



KEY:
Missouri Intermediate Converter Site

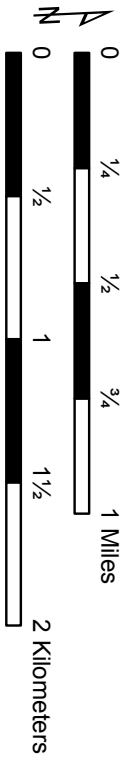
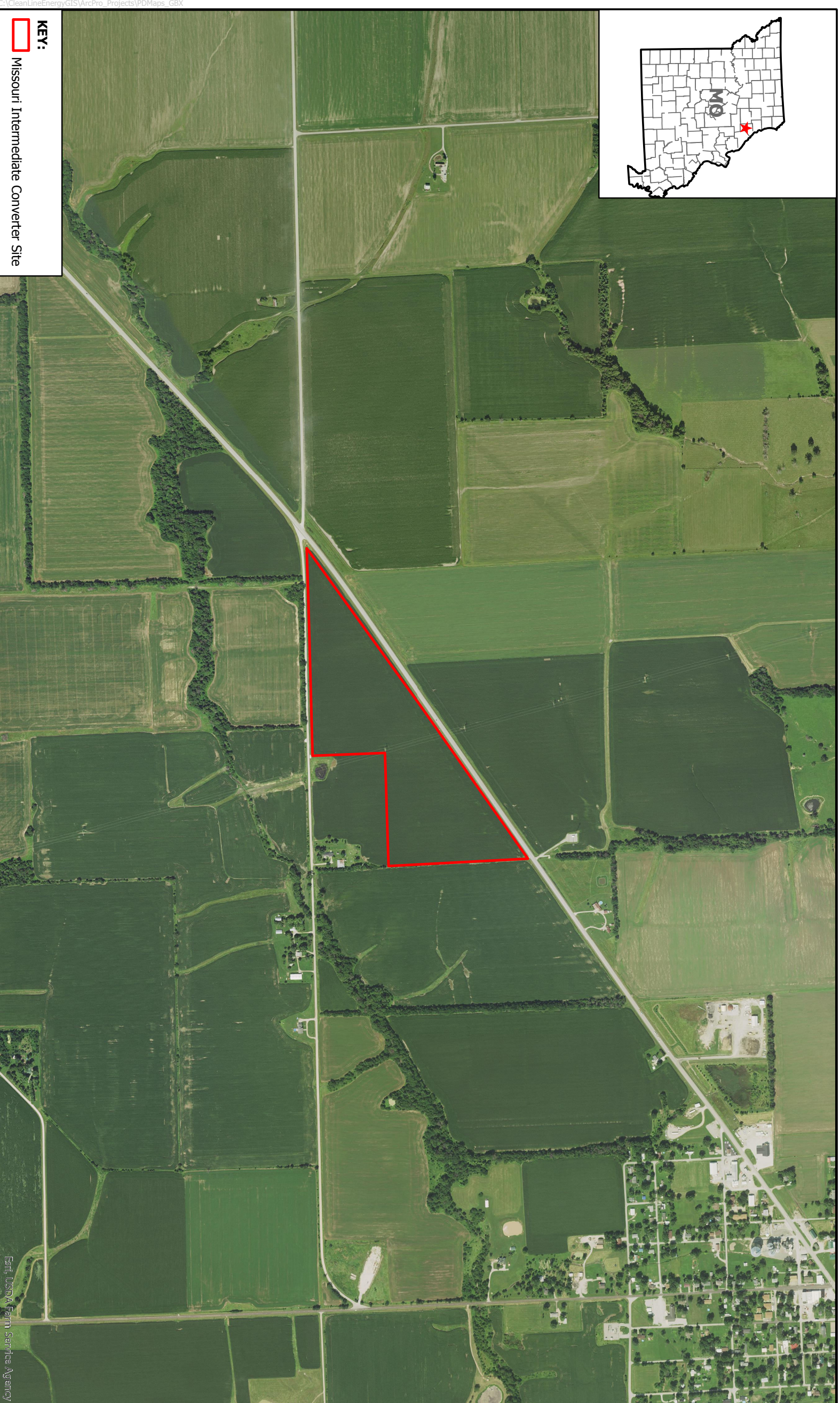


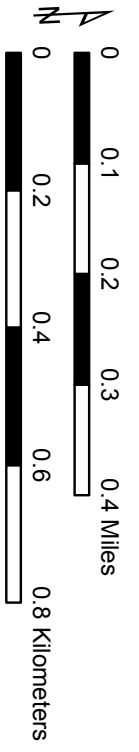
Figure 2-4a
Missouri Converter Station Siting Area
Grain Belt Express Clean Line
Ralls County, Missouri

C:\CleanLineEnergyGIS\ArcPro Projects\PDMaps GBX

Copyright © 2013 National Geographic Society. All rights reserved.



KEY:
Missouri Intermediate Converter Site



C:\CleanLineEnergy\GIS\ArcPro_Projects\PDMaps_GBX

Esri, USDA Farm Service Agency

Figure 2-4b
Missouri Converter Station Siting Area
Grain Belt Express Clean Line
Ralls County, Missouri

GRAIN BELT EXPRESS

CLEAN LINE

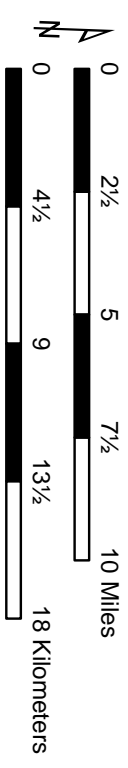
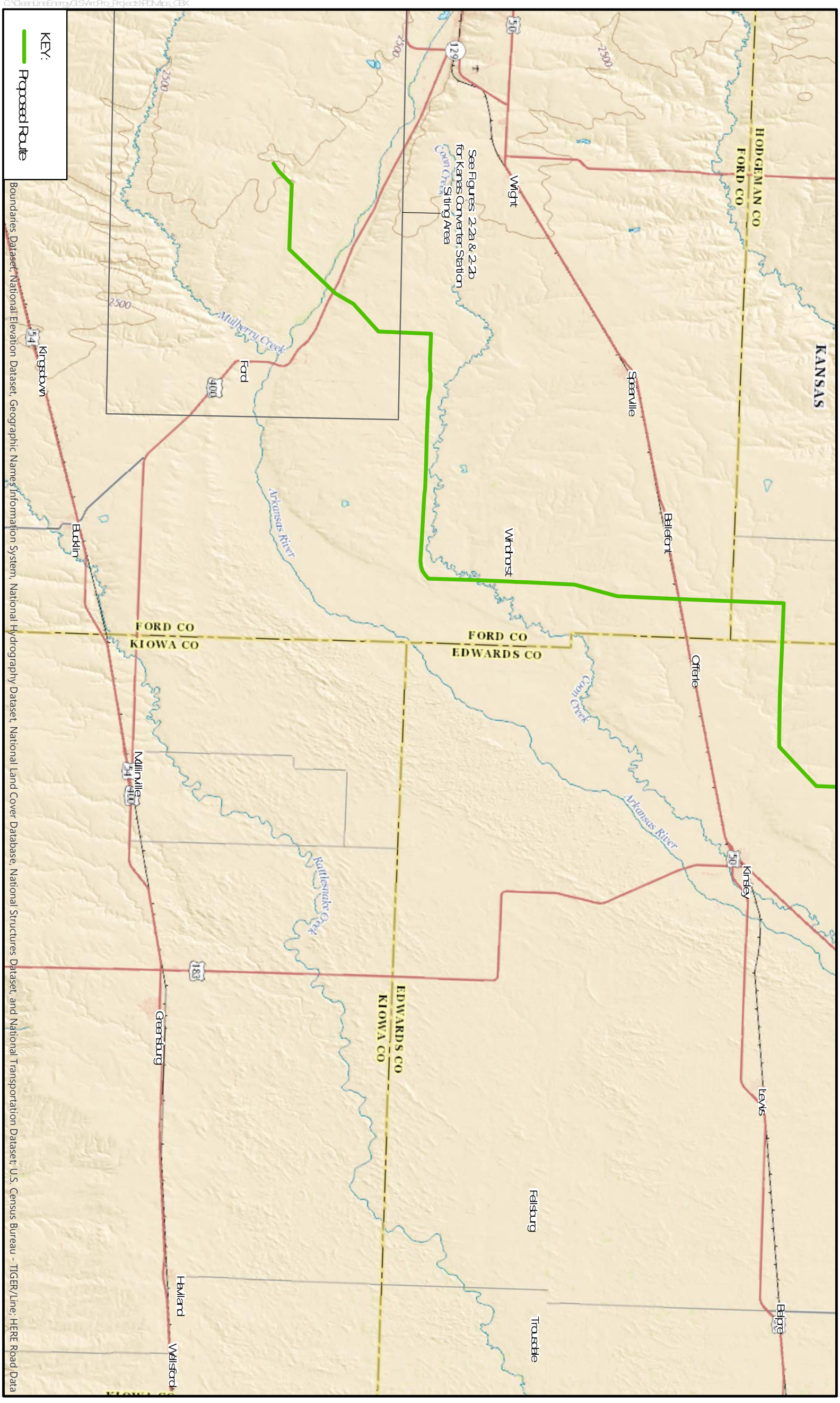
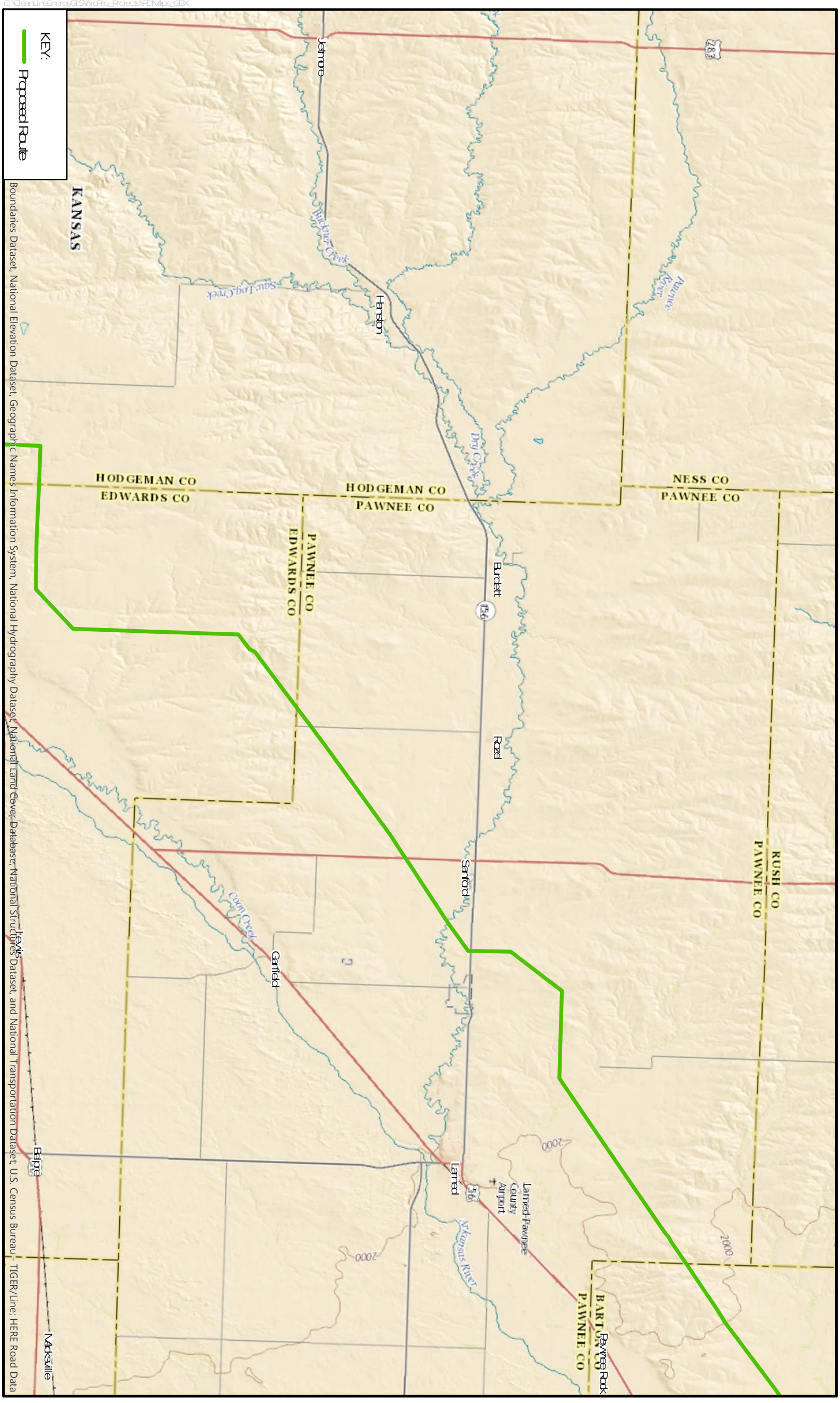


Figure 2-5
 Project Overview Map Book
 Grain Belt Express Clean Line
 Kansas, Missouri, Illinois and Indiana

GRAIN BELT EXPRESS

CLEAN LINE



C:\CleanLineEnergy\GIS\ArcPro_Projects\EDM\Map_CBX

KEY:

- Proposed Route

Boundaries Dataset: National Elevation Dataset, Geographic Names Information System, National Hydrography Dataset, National Land Cover Database, National Structure Dataset, and National Transportation Dataset; U.S. Census Bureau - TIGER/Line; HERE Road Data

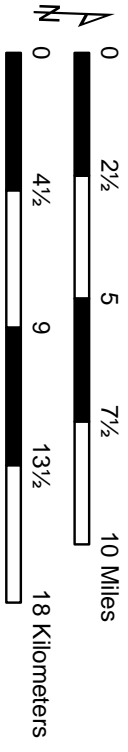


Figure 2-5
 Project Overview Map Book
 Grain Belt Express Clean Line
 Kansas, Missouri, Illinois and Indiana

GRAIN BELT EXPRESS

CLEAN LINE

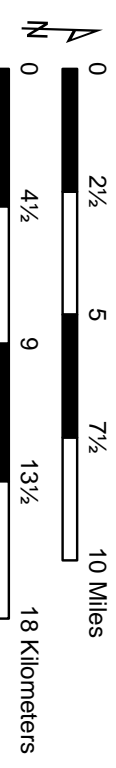
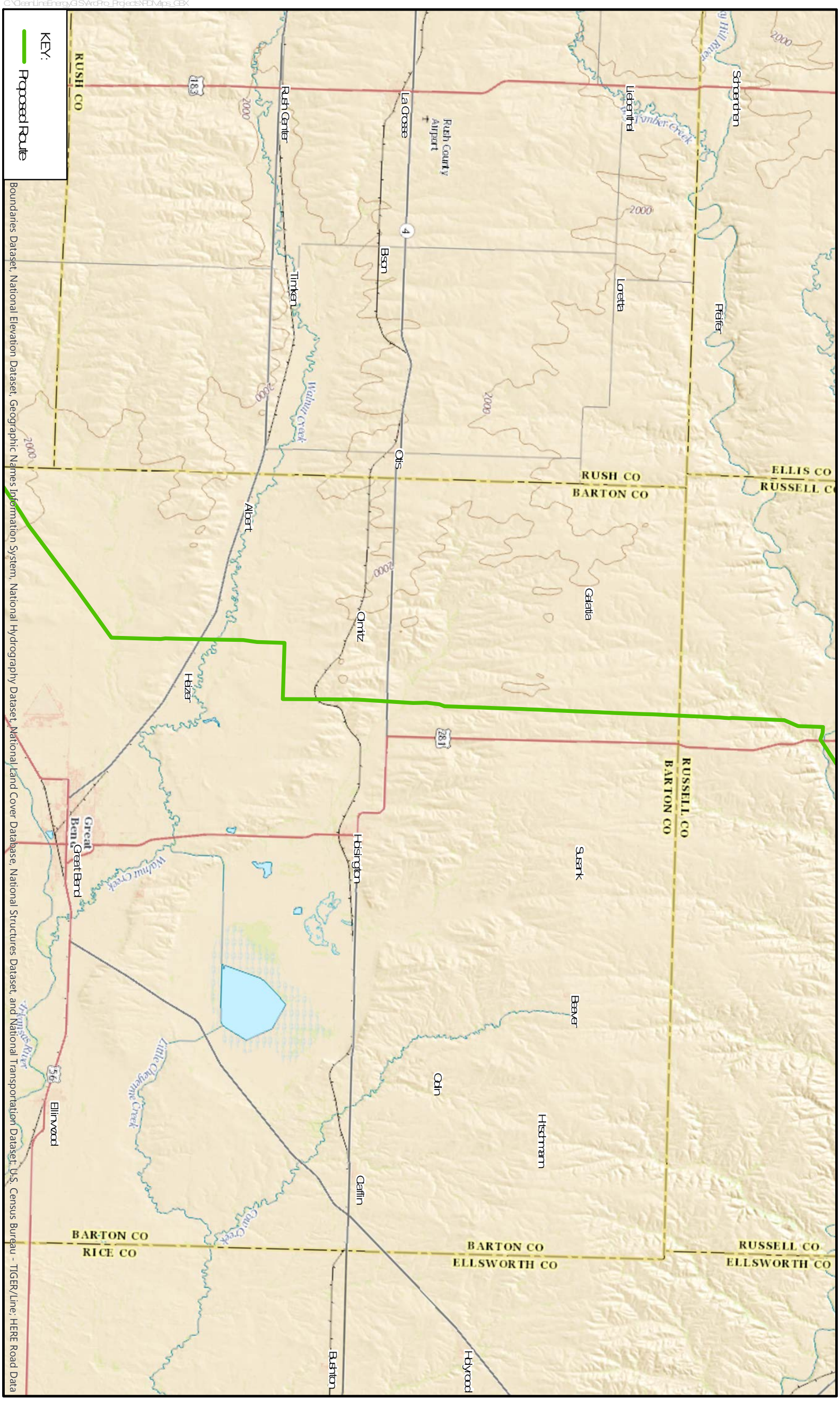


Figure 2-5
 Project Overview Map Book
 Grain Belt Express Clean Line
 Kansas, Missouri, Illinois and Indiana

GRAIN BELT EXPRESS

CLEAN LINE

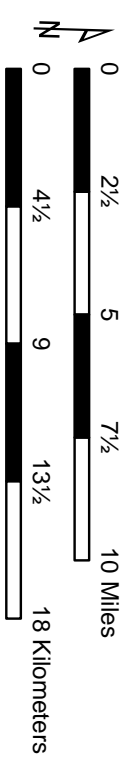
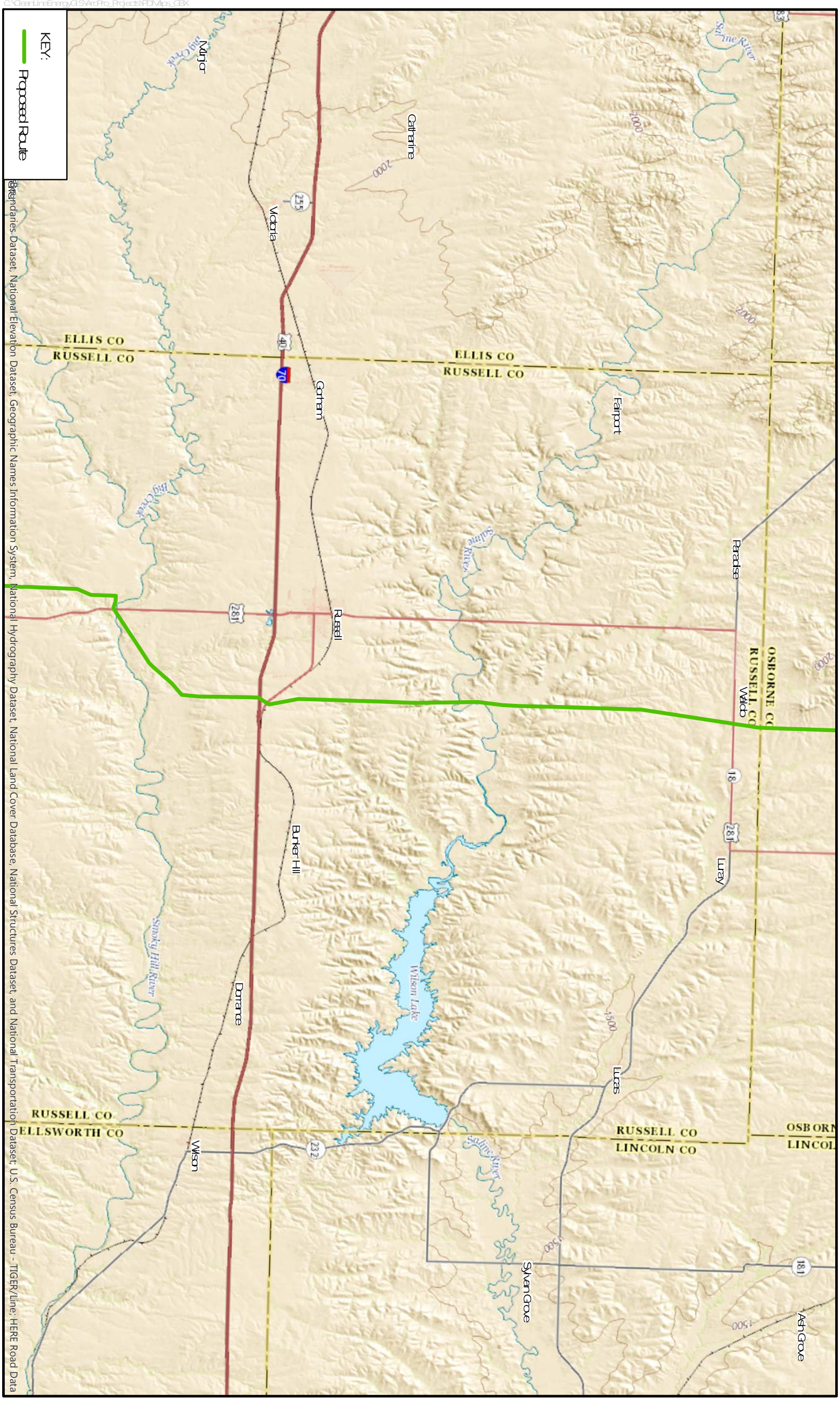


Figure 2-5
 Project Overview Map Book
 Grain Belt Express Clean Line
 Kansas, Missouri, Illinois and Indiana