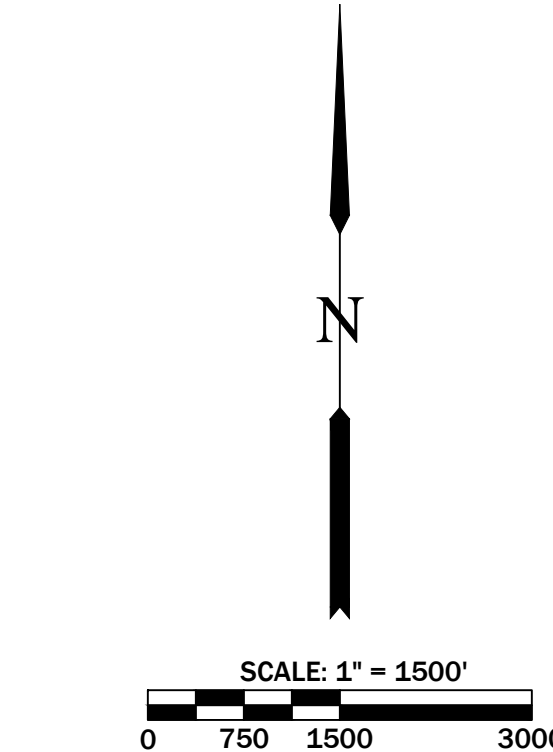
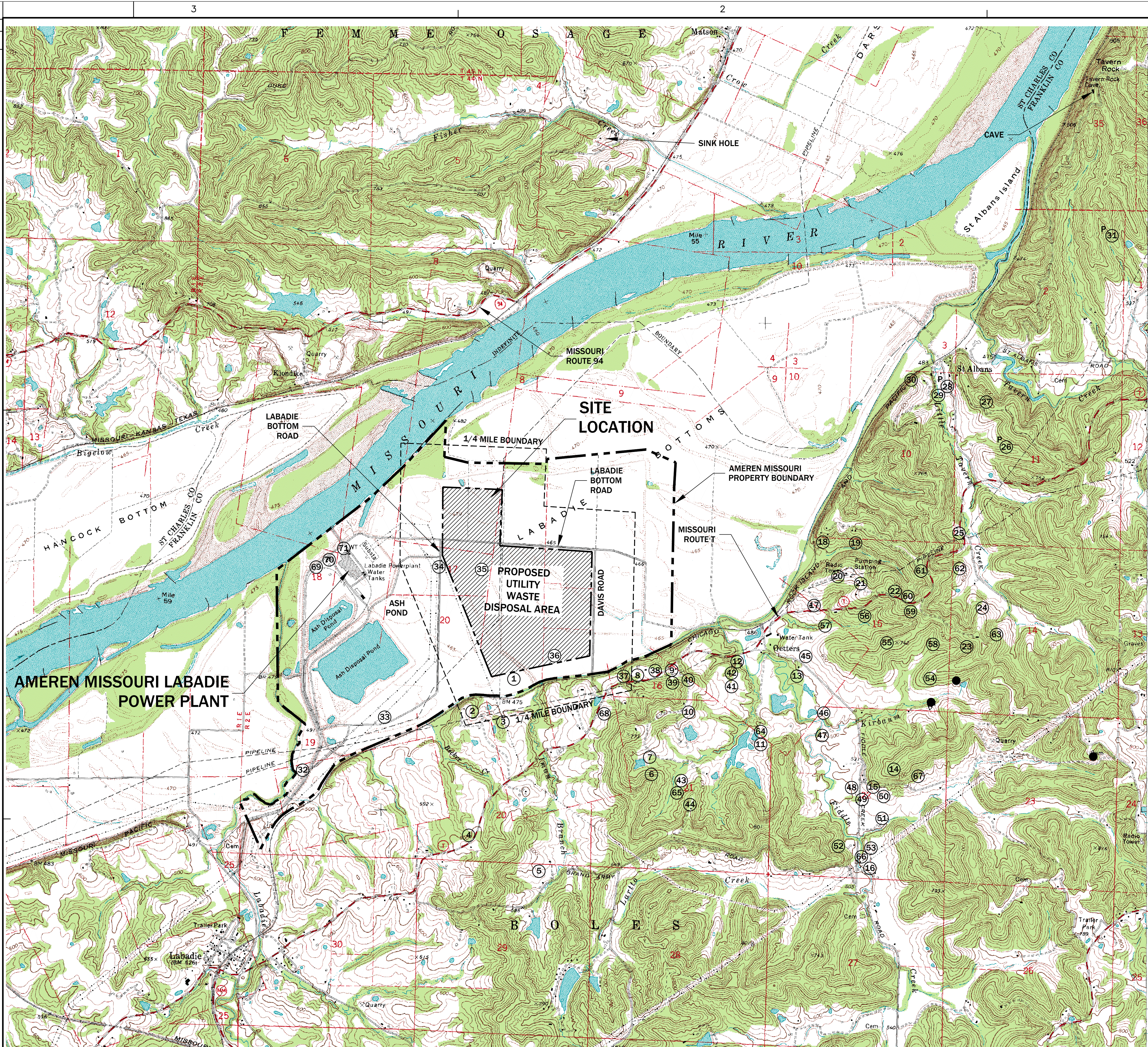


PRINT	
DIST.	
REVISIONS	
REV.	W.O.



LEGEND

AMEREN MISSOURI PROPERTY BOUNDARY

1/4 MILE BOUNDARY

PROPOSED DISPOSAL AREA BOUNDARY

EXISTING GROUND TOPOGRAPHY

460

23 PRIVATE WELL

31 PUBLIC WELL

SPRING

- NOTES
1. ALL BOUNDARIES AND LOCATIONS ARE APPROXIMATE.

2. SEE AERIAL PHOTO (FIGURE 2) FOR ADDITIONAL SITE INFORMATION.

3. PRECIPITATION IS MEASURED AND RECORDED DAILY AT THE AMEREN MISSOURI LABADIE POWER PLANT.

4. MISSOURI RIVER READINGS ARE MEASURED AND RECORDED DAILY AT THE AMEREN MISSOURI LABADIE POWER PLANT.

5. SINK HOLE AND SPRING LOCATIONS OBTAINED FROM MEGA (2007).

6. WELL LOCATIONS 1 THROUGH 67 BASED ON DATA OBTAINED FROM MEGA (2007). NOTE THAT THE LOCATIONS FOR WELL #'S 34, 35 AND 36 ARE BELIEVED TO BE IN ERROR. THE LOCATION FOR WELL #68 IS BASED ON VISUAL OBSERVATION DURING THE FIELD INVESTIGATION.

7. WELLS 69, 70, AND 71 ARE OWNED AND OPERATED BY AMEREN MISSOURI.

8. ADDITIONAL WELL INFORMATION PROVIDED IN APPENDIX 12.

SOURCE: USGS LABADIE QUADRANGLE

THE GEOLOGIST WHO REVIEWED AND APPROVED THIS REPORT ASSUMES RESPONSIBILITY ONLY FOR GEOLOGIC INTERPRETATIONS OF DATA APPEARING ON THE PAGE AND DISCLAIMS PURSUANT TO SECTION 236.456 RSMO ANY RESPONSIBILITY FOR ALL OTHER PLANS, SPECIFICATIONS, ESTIMATES, REPORTS OR OTHER DOCUMENTS OR INSTRUMENTS NOT PREPARED UNDER THE SUPERVISION OF THE GEOLOGIST RELATING TO OR INTENDED TO BE USED FOR ANY PART OR PARTS OF THE PROJECT TO WHICH THIS FIGURE REFERS.

REITZ & JENS, INC.

CONSULTING ENGINEERS

1055 CORPORATE SQUARE DRIVE

ST. LOUIS, MISSOURI 63132

314.993.4132 (voice) 314.993.4177 (fax)

GRIEDEL Engineering Resources, Inc.

ENVIRONMENTAL ENGINEERING

LAND AIR WATER

1055 Cash High Street

Jefferson City, Missouri 65101

Telephone (573) 599-9678

Facsimile (573) 599-9679

PREPARED FOR

AMEREN MISSOURI

DRAWN

020411

W.J.A. (GER)

CHKD.

M.C.C. (GER)

SUPV.

M.C.C. (GER)

APPD.

M.C.C. (GER)

STATE OF MISSOURI

DEPARTMENT OF GEOLOGY

REGISTERED GEOLOGIST

NO. 0128

FIGURE 1

DETAILED SITE INVESTIGATION

PROPOSED UTILITY WASTE DISPOSAL AREA

SITE LOCATION MAP

LOCATION

001004

LABADIE PLANT

CLASS

02010

REV.

ST. LOUIS, MISSOURI

FIG (1).DWG

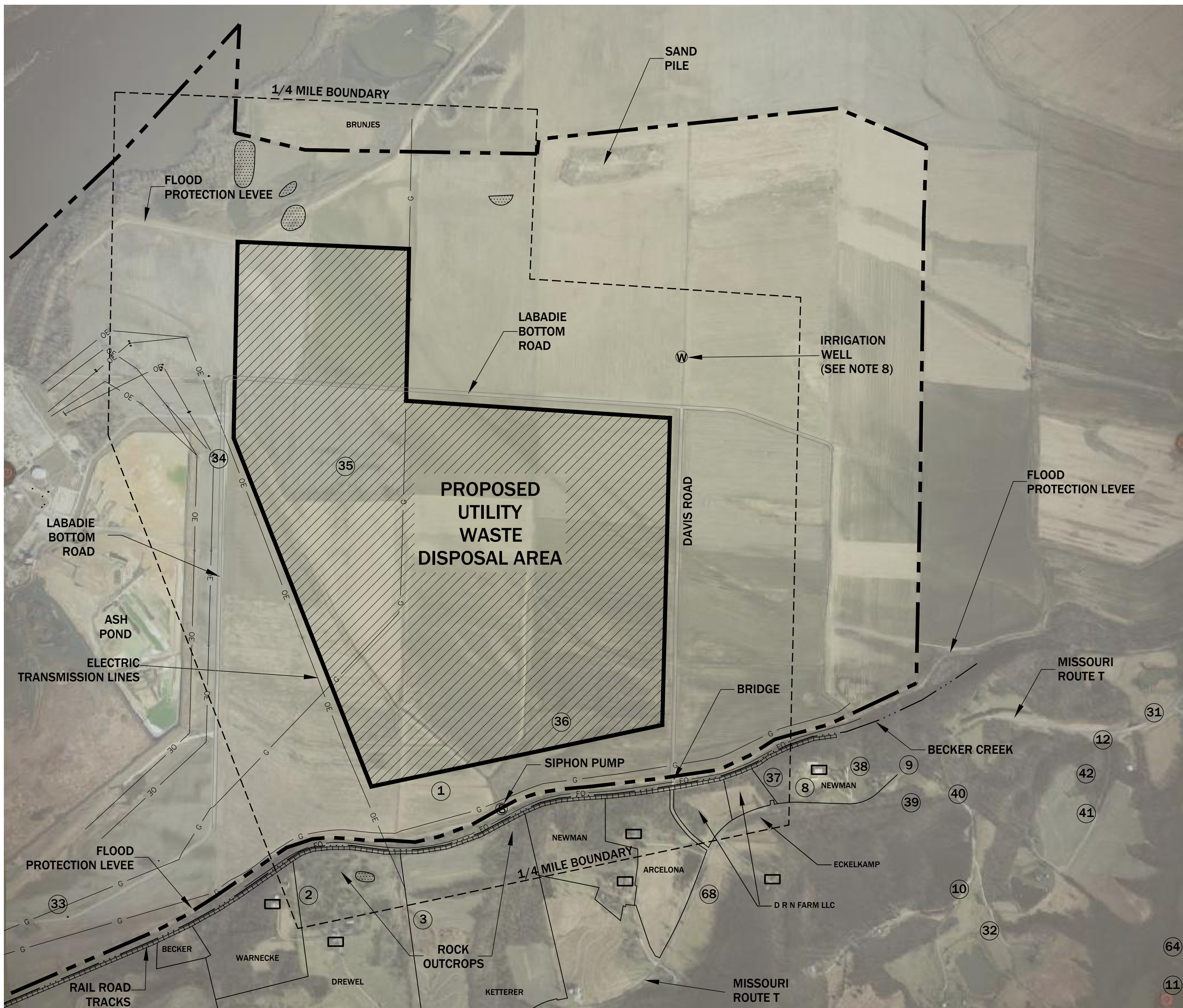
3

2

1



PRINT DIST.	
REVISIONS	
REV.	W.O.




## LEGEND

- AMEREN MISSOURI PROPERTY BOUNDARY
- 1/4 MILE BOUNDARY
- PROPOSED DISPOSAL AREA BOUNDARY
- RAILROAD
- CREEK
- EXISTING OVERHEAD ELECTRIC
- EXISTING MISSOURI PIPELINE
- EXISTING FIBER OPTIC LINE
- RESIDENCE / STRUCTURES
- APPROXIMATE AREA SHOWN ON NATIONAL WETLANDS INVENTORY MAP (SEE APPENDIX 13).
- EXISTING POWER POLE
- PRIVATE WELL
- IRRIGATION WELL
- SIPHON PUMP

## NOTES

- ALL BOUNDARIES AND LOCATIONS ARE APPROXIMATE.
- AERIAL PHOTOGRAPH PROVIDED BY REITZ AND JENS, INC. AERIAL DATE: MARCH 13, 2009.
- LAND USE WITHIN 1/4 MILE OF PROPOSED WASTE BOUNDARY IS AGRICULTURAL EXCEPT FOR AREAS OF SINGLE-FAMILY RESIDENTIAL ON THE RIVER BLUFFS SOUTH OF SITE.
- NO MINED OR QUARRIED AREAS, MINE SHAFTS, OR MINE SPOIL AREAS LOCATED WITHIN 1/4 MILE OF PROPOSED WASTE BOUNDARY.
- NO SPRINGS, LAKES, CAVES, OR SINKHOLES LOCATED WITHIN 1/4 MILE OF PROPOSED WASTE BOUNDARY (STREAMS AND ROCK OUTCROPS NOTED).
- WELL LOCATIONS BASED ON DATA OBTAINED FROM MEGA (2007). NOTE THAT THE LOCATIONS FOR WELL #S 34, 35 AND 36 ARE BELIEVED TO BE IN ERROR. THE LOCATION FOR WELL #68 IS BASED ON VISUAL OBSERVATION DURING THE FIELD INVESTIGATION.
- POTENTIAL JURISDICTIONAL WETLAND AREAS MAY EXIST WITHIN DSI LIMITS AND ARE SUBJECT TO VERIFICATION BY U.S. ARMY CORPS OF ENGINEERS (USACE). SEE APPENDIX 13 FOR ADDITIONAL WETLAND INFORMATION.
- IRRIGATION WELL AND PIVOT SYSTEM NOT USED DURING THE DSI FIELD INVESTIGATION.
- AVAILABLE BORROW MATERIAL WITHIN DSI LIMITS WILL BE UTILIZED TO THE EXTENT PRACTICABLE. ADDITIONAL BORROW MATERIAL WILL BE OBTAINED FROM OFF SITE SOURCES.
- DSI LIMITS LOCATED WITHIN 100-YEAR FLOOD PLAIN. SEE APPENDIX 11 FOR ADDITIONAL FLOODWAY INFORMATION.

THE GEOLOGIST WHO REVIEWED AND APPROVED THIS REPORT ASSUMES RESPONSIBILITY ONLY FOR GEOLOGIC INTERPRETATIONS OF DATA APPEARING ON THE PAGE AND DISCLAIMS PURSUANT TO SECTION 236.456 RSMO ANY RESPONSIBILITY FOR ALL OTHER PLANS, SPECIFICATIONS, ESTIMATES, REPORTS OR OTHER DOCUMENTS OR INSTRUMENTS NOT PREPARED UNDER THE SUPERVISION OF THE GEOLOGIST RELATING TO OR INTENDED TO BE USED FOR ANY PART OR PARTS OF THE PROJECT TO WHICH THIS FIGURE REFERS.		<b>REITZ &amp; JENS, INC.</b> CONSULTING ENGINEERS 1055 CORPORATE SQUARE DRIVE ST. LOUIS, MISSOURI 63132 314.993.4132 (voice) 314.993.4177 (fax)		<b>GRIEDEL Engineering Resources, Inc.</b> ENVIRONMENTAL, ENGINEERING, LAND AIR WATER 1055 East High Street Jefferson City, Missouri 65101 Telephone (573) 639-9678 Facsimile (573) 639-9679	
DRAWN 020411 W.J.A. (GER)		PREPARED FOR <b>Ameren Missouri</b>			
CHKD. M.C.C. (GER)		FIGURE 2 DETAILED SITE INVESTIGATION PROPOSED UTILITY WASTE DISPOSAL AREA AERIAL PHOTOGRAPH			
SUPV. M.C.C. (GER)		LOCATION 001004		CLASS 02010	
APPD. M.C.C. (GER)		LABADIE PLANT		REV.	
		<b>Ameren Missouri</b> ST. LOUIS, MISSOURI		FIG (2)(3)(NAT-WETLND).DWG	