

FLOODING SOURCE	PANEL <sup>1</sup>	ELEVATION DIFFERENCE <sup>2</sup> BETWEEN 1.0% (100-YEAR) FLOOD AND			FLOOD HAZARD FACTOR	ZONE	BASE FLOOD ELEVATION <sup>3</sup> (NGVD)
		10% (10-YEAR)	2% (50-YEAR)	0.2% (500-YEAR)			
MISSOURI RIVER REACH 1	0025,0045, 0075,0080, 0085,0092, 0105,0106, 0108,0115	-4.8	-1.6	2.6	050	A10	VARIES-SEE MAP
MERAMEC RIVER REACH 1	0170,0180, 0185,0187, 0190,0250' 0255	-7.1	-1.9	4.3	070	A14	VARIES-SEE MAP
REACH 2	0240,0250, 0255	-4.8	-1.3	2.7	050	A10	VARIES-SEE MAP
REACH 3	0240	-6.3	-1.7	3.4	065	A13	VARIES-SEE MAP
LITTLE MERAMEC RIVER							
REACH 1	0255	-1.7	-0.5	1.0	015	A3	VARIES-SEE MAP
REACH 2	0255	-1.9	-0.5	1.2	020	A4	VARIES-SEE MAP

<sup>1</sup>FLOOD INSURANCE RATE MAP PANEL

<sup>2</sup>WEIGHTED AVERAGE

<sup>3</sup>ROUNDED TO NEAREST FOOT

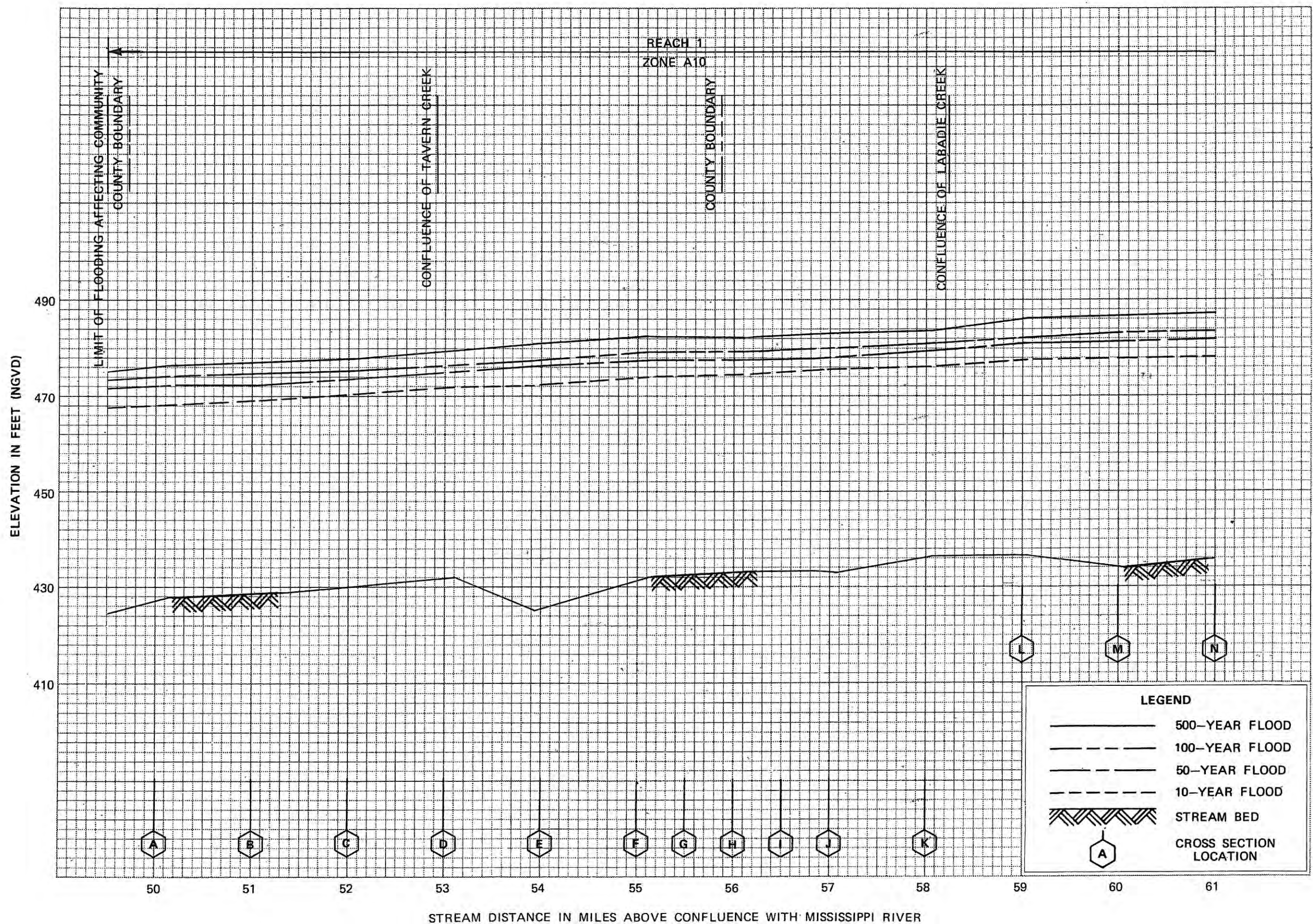
**TABLE 3**

FEDERAL EMERGENCY MANAGEMENT AGENCY

**FRANKLIN COUNTY, MO**  
(UNINCORPORATED AREAS)

**FLOOD INSURANCE ZONE DATA**

**MISSOURI RIVER - MERAMEC RIVER - LITTLE MERAMEC RIVER**



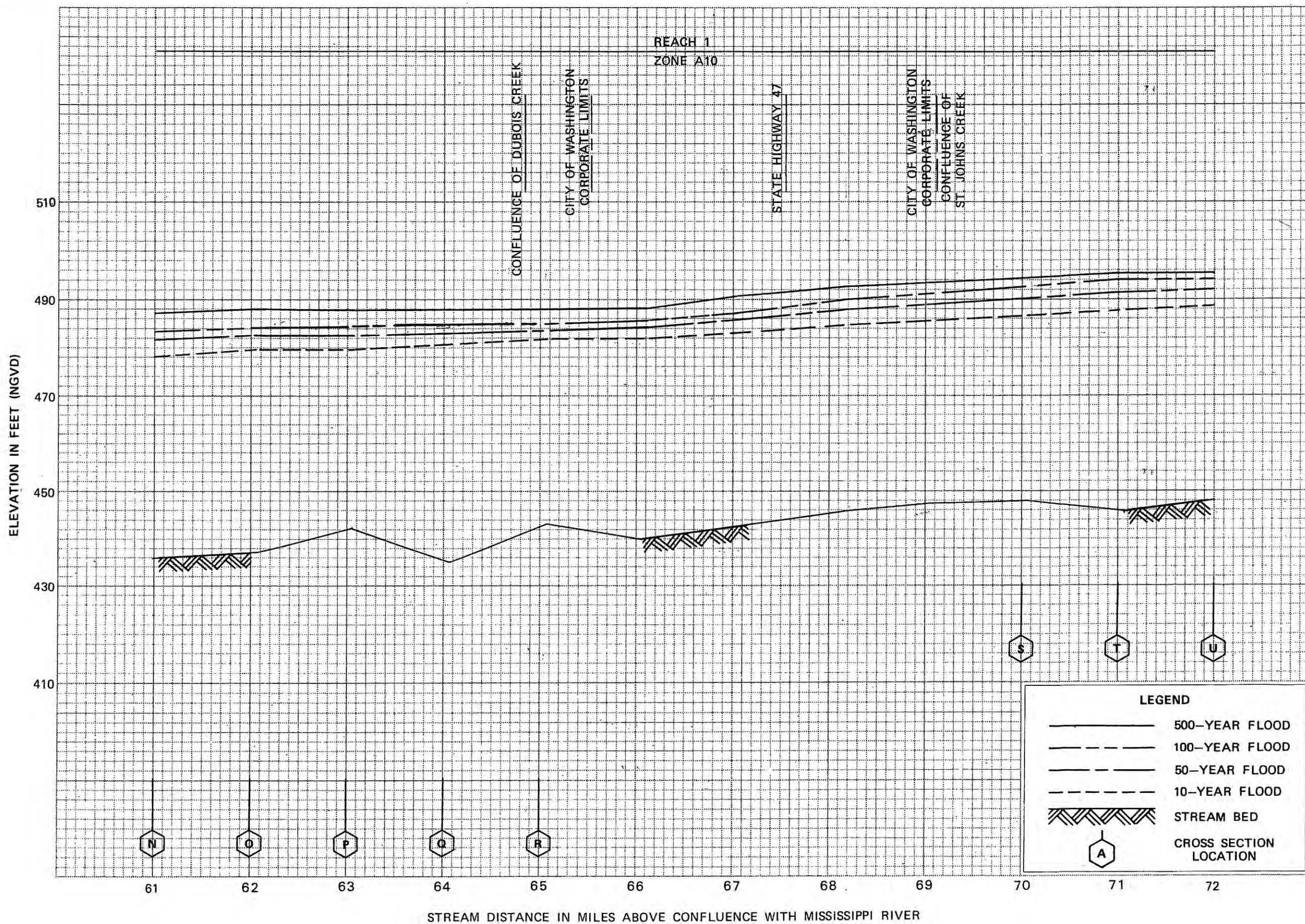
# FLOOD PROFILES

MISSOURI RIVER

FEDERAL EMERGENCY MANAGEMENT AGENCY

FRANKLIN COUNTY, MO  
(UNINCORPORATED AREAS)



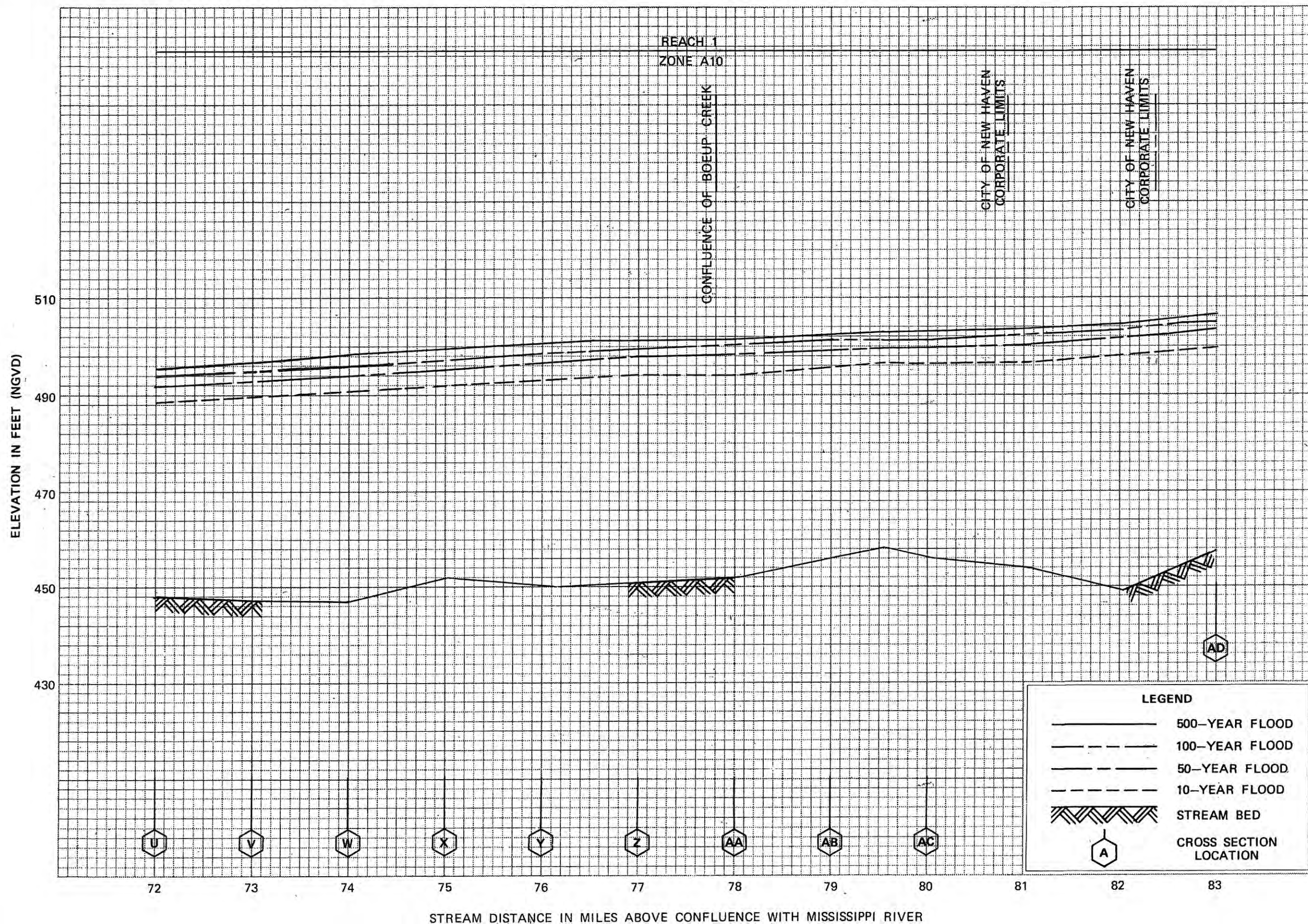


**FLOOD PROFILES**

**MISSOURI RIVER**

FEDERAL EMERGENCY MANAGEMENT AGENCY  
**FRANKLIN COUNTY, MO**  
(UNINCORPORATED AREAS)





# FLOOD PROFILES

MISSOURI RIVER

FEDERAL EMERGENCY MANAGEMENT AGENCY

**FRANKLIN COUNTY, MO**  
(UNINCORPORATED AREAS)

03P

## **APPENDIX B**

Final Flood Elevation Determination Letter  
from FEMA to Franklin County, Missouri  
Dated April 18, 2011





# Federal Emergency Management Agency

Washington, D.C. 20472

CERTIFIED MAIL  
RETURN RECEIPT REQUESTED

IN REPLY REFER TO:  
19P

April 18, 2011

John Greisheimer  
Presiding Commissioner  
Franklin County  
400 East Locust Street, Suite 206  
Union, Missouri 63084

Community: Franklin County and  
Unincorporated Areas  
Community No.: 290493  
Map Panels Affected: See FIRM Index

Dear Mr. Greisheimer:

This is to formally notify you of the final flood elevation determination for the County of Franklin in compliance with Title 44, Chapter I, Part 67, Section 67.11, Code of Federal Regulations (CFR). This section requires that notice of final flood elevations shall be sent to the Chief Executive Officer of the community, all individual appellants, and the State Coordinating Agency, and shall be published in the *Federal Register*.

On October 16, 1984, the Department of Homeland Security's Federal Emergency Management Agency (FEMA) issued a Flood Insurance Rate Map (FIRM) that identified the Special Flood Hazard Areas (SFHAs), the areas subject to inundation by the base (1-percent-annual-chance) flood, in your community. Recently, FEMA completed a re-evaluation of flood hazards in your community. On November 13, 2009, FEMA provided you with Preliminary copies of the FIRM and Flood Insurance Study (FIS) report that identify existing flood hazards in your community, including Base Flood Elevations (BFEs). The proposed BFEs for your community were published in the *Missourian* on June 23, 2010 and June 30, 2010, and in the *Federal Register*, at Part 67, Volume 75, Pages 31363 and 31364, on June 3, 2010.

The statutory 90-day appeal period, which was initiated on the second newspaper publication date cited above, has ended. FEMA did not receive any appeals of the proposed BFEs during that time. Accordingly, the BFEs for your community are considered final. The final rule for BFEs will be published in the *Federal Register* as soon as possible. The FIRM for your community will become effective on October 18, 2011. Before the effective date, FEMA will send you final printed copies of the FIRM and FIS report.

Because the FIS report establishing the BFEs for your community has been completed, certain additional requirements must be met under Section 1361 of the National Flood Insurance Act of 1968, as amended, within 6 months from the date of this letter. Prior to October 18, 2011, your community is required, as a condition of continued eligibility in the National Flood Insurance Program (NFIP), to adopt or show evidence of adoption of floodplain management regulations that meet the standards of Paragraph 60.3(d) of the enclosed NFIP regulations (44 CFR 59, etc.) by the effective date of the FIRM. These standards are the minimum requirements and do not supersede any State or local requirements of a more stringent nature.

It must be emphasized that all the standards specified in Paragraph 60.3(d) of the NFIP regulations must be enacted in a legally enforceable document. This includes adoption of the current effective FIRM and FIS report to which the regulations apply and other modifications made by this map revision. Some of the standards should already have been enacted by your community in order to establish initial eligibility in the NFIP. Your community can meet any additional requirements by taking one of the following actions:

1. Amending existing regulations to incorporate any additional requirements of Paragraph 60.3(d);
2. Adopting all the standards of Paragraph 60.3(d) into one new, comprehensive set of regulations; or
3. Showing evidence that regulations have previously been adopted that meet or exceed the minimum requirements of Paragraph 60.3(d).

Communities that fail to enact the necessary floodplain management regulations will be suspended from participation in the NFIP and subject to the prohibitions contained in Section 202(a) of the Flood Disaster Protection Act of 1973 (Public Law 93-234) as amended.

In addition to your community using the FIRM and FIS report to manage development in the floodplain, FEMA will use the FIRM and FIS report to establish appropriate flood insurance rates. On the effective date of the revised FIRM, actuarial rates for flood insurance will be charged for all new structures and substantial improvements to existing structures located in the identified SFHAs. These rates may be higher if structures are not built in compliance with the floodplain management standards of the NFIP. The actuarial flood insurance rates increase as the lowest elevations (including basement) of new structures decrease in relation to the BFEs established for your community. This is an important consideration for new construction because building at a higher elevation can greatly reduce the cost of flood insurance.

To assist your community in maintaining the FIRM, we have enclosed a Summary of Map Actions to document previous Letter of Map Change (LOMC) actions (i.e., Letters of Map Amendment (LOMAs), Letters of Map Revision (LOMRs)) that will be superseded when the revised FIRM panels referenced above become effective. Information on LOMCs is presented in the following four categories:

(1) LOMCs for which results have been included on the revised FIRM panels; (2) LOMCs for which results could not be shown on the revised FIRM panels because of scale limitations or because the LOMC issued had determined that the lots or structures involved were outside the SFHA as shown on the FIRM; (3) LOMCs for which results have not been included on the revised FIRM panels because the flood hazard information on which the original determinations were based are being superseded by new flood hazard information; and (4) LOMCs issued for multiple lots or structures where the determination for one or more of the lots or structures cannot be revalidated through an administrative process like the LOMCs in Category 2 above. LOMCs in Category 2 will be revalidated through a single letter that reaffirms the validity of a previously issued LOMC; the letter will be sent to your community shortly before the effective date of the revised FIRM and will become effective 1 day after the revised FIRM becomes effective. For the LOMCs listed in Category 4, we will review the data previously submitted for the LOMA or LOMR request and issue a new determination for the affected properties after the revised FIRM becomes effective.

The FIRM and FIS report for your community have been prepared in our countywide format, which means that flood hazard information for all jurisdictions within Franklin County has been combined into one FIRM and FIS report. When the FIRM and FIS report are printed and distributed, your community will receive only those panels that present flood hazard information for your community. We will provide complete sets of the FIRM panels to county officials, where they will be available for review by your community.

The FIRM panels have been computer-generated. Once the FIRM and FIS report are printed and distributed, the digital files containing the flood hazard data for the entire county can be provided to your community for use in a computer mapping system. These files can be used in conjunction with other thematic data for floodplain management purposes, insurance purchase and rating requirements, and many other planning applications. Copies of the digital files or paper copies of the FIRM panels may be obtained by calling our FEMA Map Information eXchange (FMIX), toll free, at 1-877-FEMA MAP (1-877-336-2627). In addition, your community may be eligible for additional credits under our Community Rating System if you implement your activities using digital mapping files.

If your community is encountering difficulties in enacting the necessary floodplain management measures required to continue participation in the NFIP, we urge you to call the Director, Federal Insurance and Mitigation Division of FEMA in Kansas City, Missouri, at (816) 283-7002 for assistance. If you have any questions concerning mapping issues in general or the enclosed Summary of Map Actions, please call FMIX at the telephone number shown above. Additional information and resources your community may find helpful regarding the NFIP and floodplain management, such as *The National Flood Insurance Program Code of Federal Regulations*, *Answers to Questions About the NFIP*, *Frequently Asked Questions Regarding the Effects that Revised Flood Hazards have on Existing Structure*, *Use of Flood Insurance Study (FIS) Data as Available Data*, and *National Flood Insurance Program Elevation Certificate and Instructions*, can be found on our website at <http://www.floodmaps.fema.gov/lfd>. Paper copies of these documents may also be obtained by calling FMIX.

Sincerely,



Luis Rodriguez, P.E., Chief  
Engineering Management Branch  
Federal Insurance and Mitigation Administration

Enclosure:

Final Summary of Map Actions

cc: Community Map Repository

Tori Karim, Community Floodplain Administrator/Director, Planning & Zoning, Franklin County



## **APPENDIX C**

Excerpts from the Franklin County, Missouri  
FIS and FIRM,  
Effective October 18, 2011

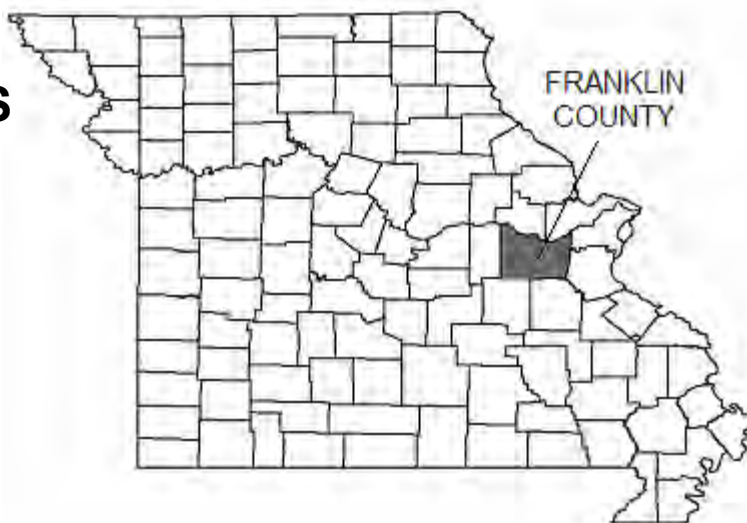
# FLOOD INSURANCE STUDY



## FRANKLIN COUNTY, MISSOURI AND INCORPORATED AREAS VOLUME 1 of 2

COMMUNITY NAME	COMMUNITY NUMBER
Berger, City of	290132
Franklin County	290493
Unincorporated Areas	290734
Gerald, City of*	290304
Leslie, Village of*	290992
Miramiguoia Park, Village of	290133
New Haven, City of	290554
Oak Grove, Village of	290134
Pacific, City of	290532
Parkway, Village of*	290135
St. Clair, City of	290136
Sullivan, City of	290137
Union, City of	290138
Washington, City of	

\*No Special Flood Hazard Areas Identified



**EFFECTIVE: October 18, 2011**



**Federal Emergency Management Agency**

**FLOOD INSURANCE STUDY NUMBER**

**29071CV001A**



**Table 4: Summary of Discharges (Continued)**

<b>Flooding Source and Location</b>	<b>Drainage Area (Sq Miles)</b>	<b>10-Percent-Annual-Chance</b>	<b>2-Percent-Annual-Chance</b>	<b>1-Percent-Annual-Chance</b>	<b>0.2-Percent-Annual-Chance</b>
<b>LITTLE CALVEY CREEK</b>					
Approximately 120 feet downstream of Low Water Bridge on Private Drive	7.6	2,340	3,570	4,090	5,480
Approximately 0.72 mile upstream of Low Water Bridge	6.5	2,160	3,300	3,790	5,100
<b>LITTLE CALVEY CREEK (continued)</b>					
Approximately 300 feet upstream of Wood Land Hills Road	5.2	1,880	2,880	3,300	4,430
At Fenny Road	3.7	1,500	2,290	2,620	3,650
Approximately 0.72 mile upstream of Fenny Road	2.9	1,300	2,000	2,290	3,100
<b>LITTLE MERAMEC RIVER</b>					
Approximately 0.63 mile downstream of State Highway 30	14.4	3,750	5,800	6,700	9,050
Approximately 0.72 mile upstream of State Highway 30	9.3	3,050	4,750	5,400	7,400
<b>LITTLE TAVERN CREEK</b>					
At Chicago Rock Island & Pacific Railroad	1.7	*	*	*	*
Approximately 0.38 mile downstream of County Highway T	1.3	*	*	*	*
At County Highway T	0.9	*	*	*	*
<b>MERAMEC RIVER</b>					
At east county boundary	2,673	61,100	109,000	133,000	197,000
Upstream of confluence of the Bourbeuse River	1,817	44,300	68,300	78,900	104,000
<b>MISSOURI RIVER</b>					
At Creve Coeur Creek	523,969	443,000	606,000	674,000	829,000
At Femme Osage River	523,801	442,000	606,000	674,000	830,000
At Charrette Creek	523,423	441,000	605,000	674,000	831,000
At Lost Creek	523,060	440,000	605,000	673,000	832,000
At Hermann Gage	522,488	439,000	604,000	673,000	833,000
<b>MONROE BRANCH</b>					
At confluence with Brush Creek	1.0	1,200	1,500	1,600	2,800
<b>PIN OAK CREEK</b>					
At confluence with the Bourbeuse River	7.2	2,920	4,600	5,300	7,300
Just downstream of Unnamed Tributary (Approximately 0.95 mile upstream of mouth)	6.1	2,870	4,550	5,300	7,100
Just upstream of Unnamed Tributary	4.0	2,130	3,390	3,920	5,400

FLOODING SOURCE		FLOODWAY			BASE FLOOD WATER SURFACE ELEVATION (FEET)			
CROSS SECTION	DISTANCE <sup>1, 2</sup>	WIDTH (FEET)	SECTION AREA (SQUARE FEET)	MEAN VELOCITY (FEET PER SECOND)	REGULATORY (NAVD)	WITHOUT FLOODWAY (NAVD)	WITH FLOODWAY (NAVD)	DIFFERENCE
Missouri River								
A	50.02	8,495/810 <sup>3</sup>	155,566	4.3	476.1	476.1	476.9	0.8
B	51.13	8,159/750 <sup>3</sup>	152,832	4.4	476.9	476.9	477.9	1.0
C	52.48	8,234/870 <sup>3</sup>	155,541	4.3	478.4	478.4	479.3	0.9
D	54.03	10,073/560 <sup>3</sup>	224,377	3.0	480.1	480.1	481.1	1.0
E	55.03	9,741/300 <sup>3</sup>	180,522	3.7	480.6	480.6	481.5	0.9
F	56.15	10,729/10,030 <sup>3</sup>	216,049	3.1	481.9	481.9	482.8	0.9
G	58.98	10,629/7,325 <sup>3</sup>	215,529	3.1	485.4	485.4	486.4	1.0
H	60.40	11,202/4,500 <sup>3</sup>	220,082	3.1	486.3	486.3	487.3	1.0
I	62.12	10,307/835 <sup>3</sup>	198,569	3.4	487.5	487.5	488.5	1.0
J	63.56	9,467/585 <sup>3</sup>	173,886	3.9	488.6	488.6	489.6	1.0
K	64.86	8,052/865 <sup>3</sup>	179,402	3.8	490.5	490.5	491.5	1.0
L	66.85	7,849/950 <sup>3</sup>	179,919	3.8	492.7	492.7	493.7	1.0
M	68.26	9,458/1,160 <sup>3</sup>	184,095	3.7	493.5	493.5	494.5	1.0
N	69.21	10,564/820 <sup>3</sup>	211,231	3.2	494.3	494.3	495.2	0.9
O	70.65	12,036/4,286 <sup>3</sup>	229,928	2.9	495.1	495.1	496.0	0.9
P	71.96	9,225/4,337 <sup>3</sup>	181,661	3.7	496.0	496.0	496.9	0.9
Q	73.18	8,263/2,130 <sup>3</sup>	160,999	4.2	496.7	496.7	497.7	1.0
R	74.39	9,028/895 <sup>3</sup>	181,751	3.7	497.9	497.9	498.8	0.9
S	75.60	10,973/780 <sup>3</sup>	218,551	3.1	498.9	498.9	499.9	1.0
T	76.42	12,196/1,185 <sup>3</sup>	221,616	3.0	499.5	499.5	500.5	1.0
U	77.76	11,748/1,215 <sup>3</sup>	186,634	3.6	500.3	500.3	501.3	1.0
V	79.13	10,201/730 <sup>3</sup>	172,346	3.9	501.7	501.7	502.6	0.9
W	80.42	10,323/730 <sup>3</sup>	169,978	4.0	502.9	502.9	503.9	1.0
X	81.73	9,798/740 <sup>3</sup>	164,354	4.1	504.6	504.6	505.5	0.9
Y	82.71	10,286/1,800 <sup>3</sup>	165,578	4.1	505.5	505.5	506.3	0.8

<sup>1</sup> Miles above confluence with Mississippi River

<sup>2</sup> Distance based on the 1960 River Mile stationing, which may not match the measured distance along the profile baseline shown on the maps

<sup>3</sup> Total width/width within county boundary

TABLE 6	FEDERAL EMERGENCY MANAGEMENT AGENCY	FLOODWAY DATA
	FRANKLIN COUNTY, MO AND INCORPORATED AREAS	MISSOURI RIVER



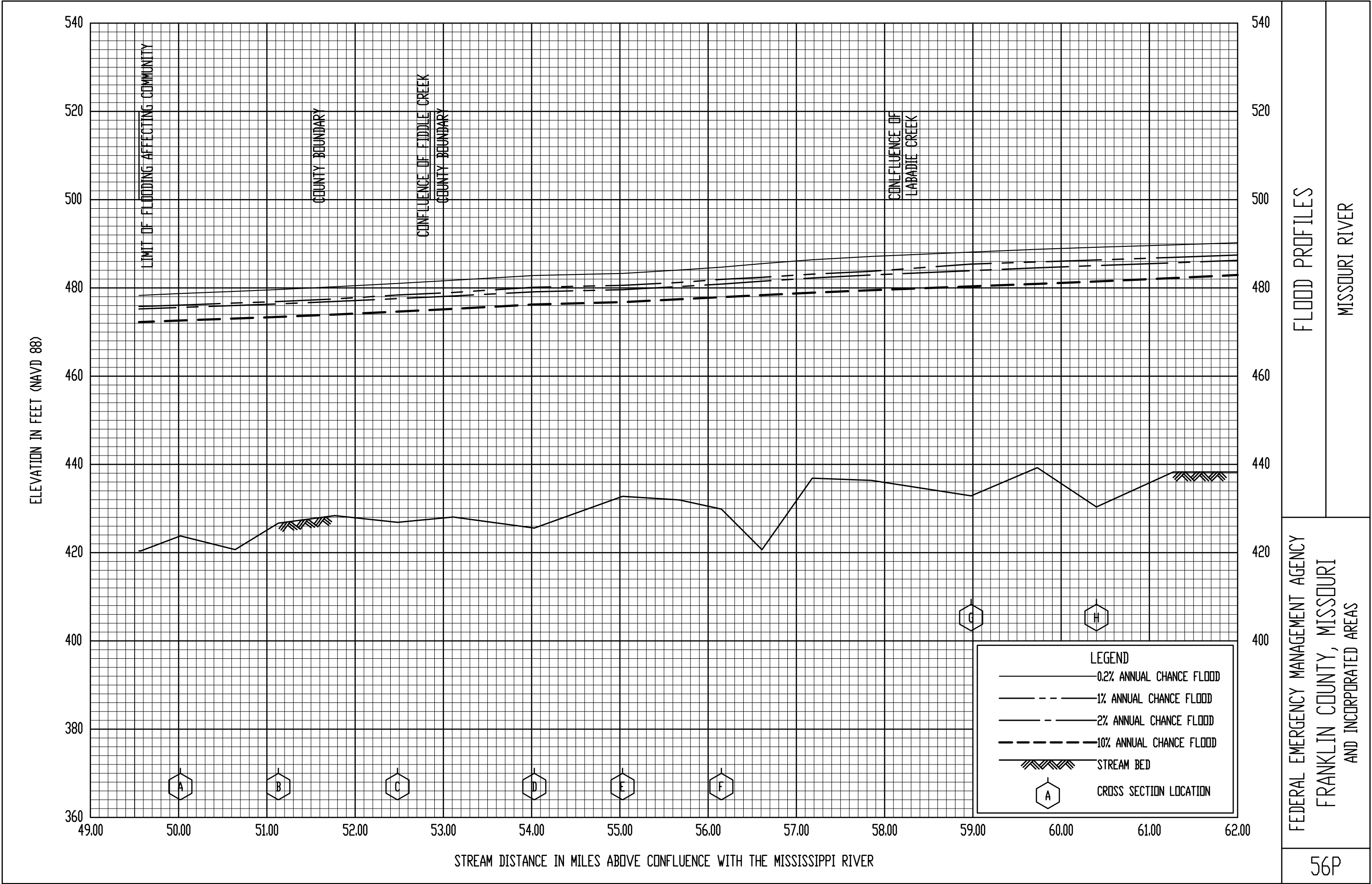
FLOODING SOURCE		FLOODWAY			BASE FLOOD WATER SURFACE ELEVATION (FEET)			
CROSS SECTION	DISTANCE <sup>1, 2</sup>	WIDTH (FEET)	SECTION AREA (SQUARE FEET)	MEAN VELOCITY (FEET PER SECOND)	REGULATORY (NAVD)	WITHOUT FLOODWAY (NAVD)	WITH FLOODWAY (NAVD)	DIFFERENCE
Missouri River (Continued)								
Z	83.89	9,994/8,259 <sup>3</sup>	194,792	3.5	506.7	506.7	507.5	0.8
AA	85.00	9,534/8,834 <sup>3</sup>	183,966	3.7	507.3	507.3	508.2	0.9
AB	86.11	9,805/9,043 <sup>3</sup>	181,011	3.7	508.2	508.2	509.1	0.9
AC	87.64	10,172/9,618 <sup>3</sup>	175,833	3.8	509.4	509.4	510.3	0.9
AD	88.92	9,931/9,115 <sup>3</sup>	179,355	3.8	510.9	510.9	511.8	0.9
AE	90.18	10,823/10,111 <sup>3</sup>	187,020	3.6	512.6	512.6	513.5	0.9
AF	90.94	11,965/10,575 <sup>3</sup>	204,099	3.3	513.5	513.5	514.4	0.9
AG	92.54	11,658/3,217 <sup>3</sup>	242,219	2.8	515.1	515.1	516.1	1.0
AH	93.85	10,517/700 <sup>3</sup>	196,289	3.4	515.6	515.6	516.5	0.9

<sup>1</sup> Miles above confluence with Mississippi River

<sup>2</sup>Distance based on the 1960 River Mile stationing, which may not match the measured distance along the profile baseline shown on the maps

<sup>3</sup>Total width/width within county boundary

TABLE 6	FEDERAL EMERGENCY MANAGEMENT AGENCY  <b>FRANKLIN COUNTY, MO</b>  AND INCORPORATED AREAS	FLOODWAY DATA
		MISSOURI RIVER

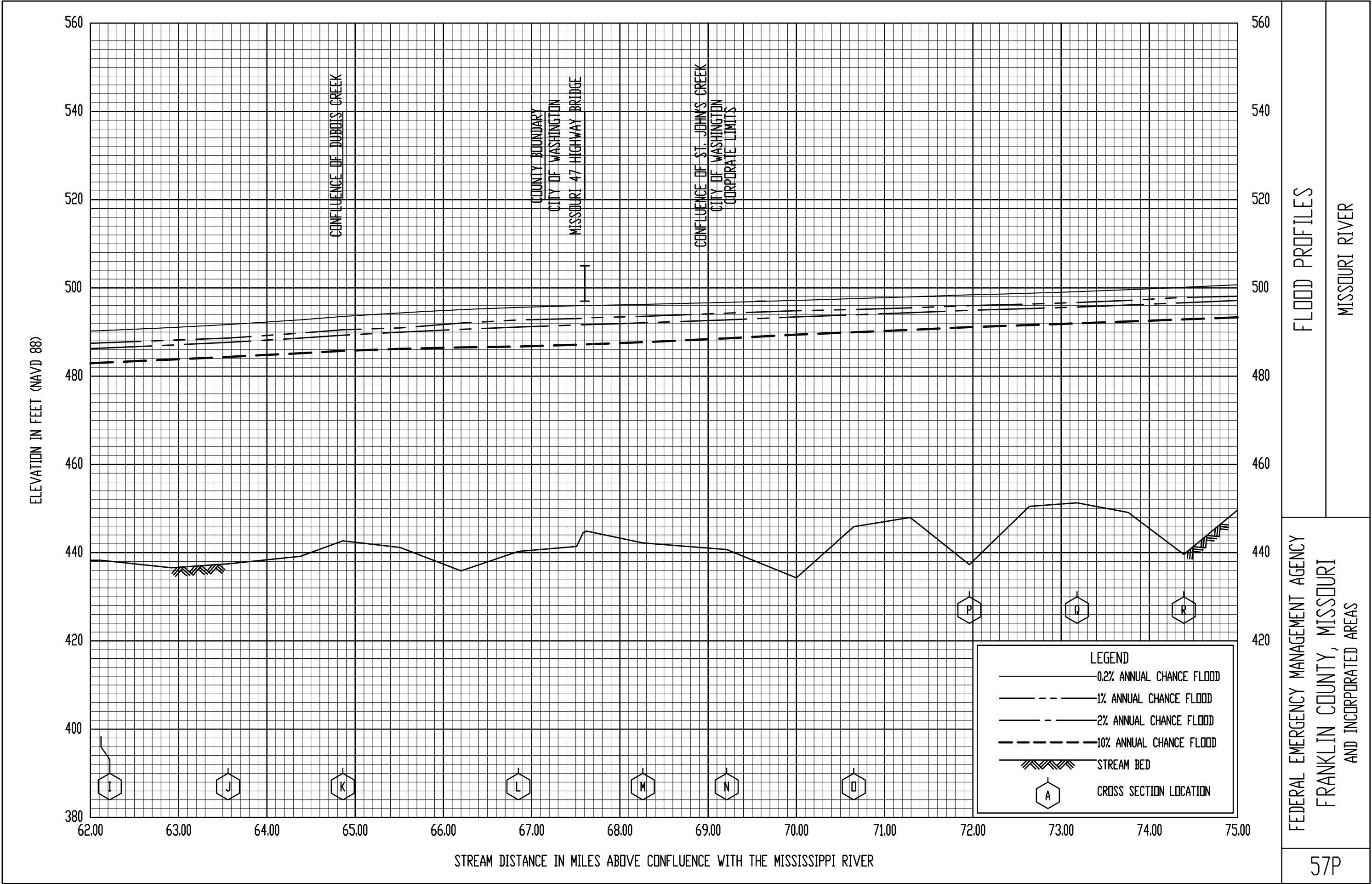


FLOOD PROFILES

MISSOURI RIVER

FEDERAL EMERGENCY MANAGEMENT AGENCY  
FRANKLIN COUNTY, MISSOURI  
AND INCORPORATED AREAS

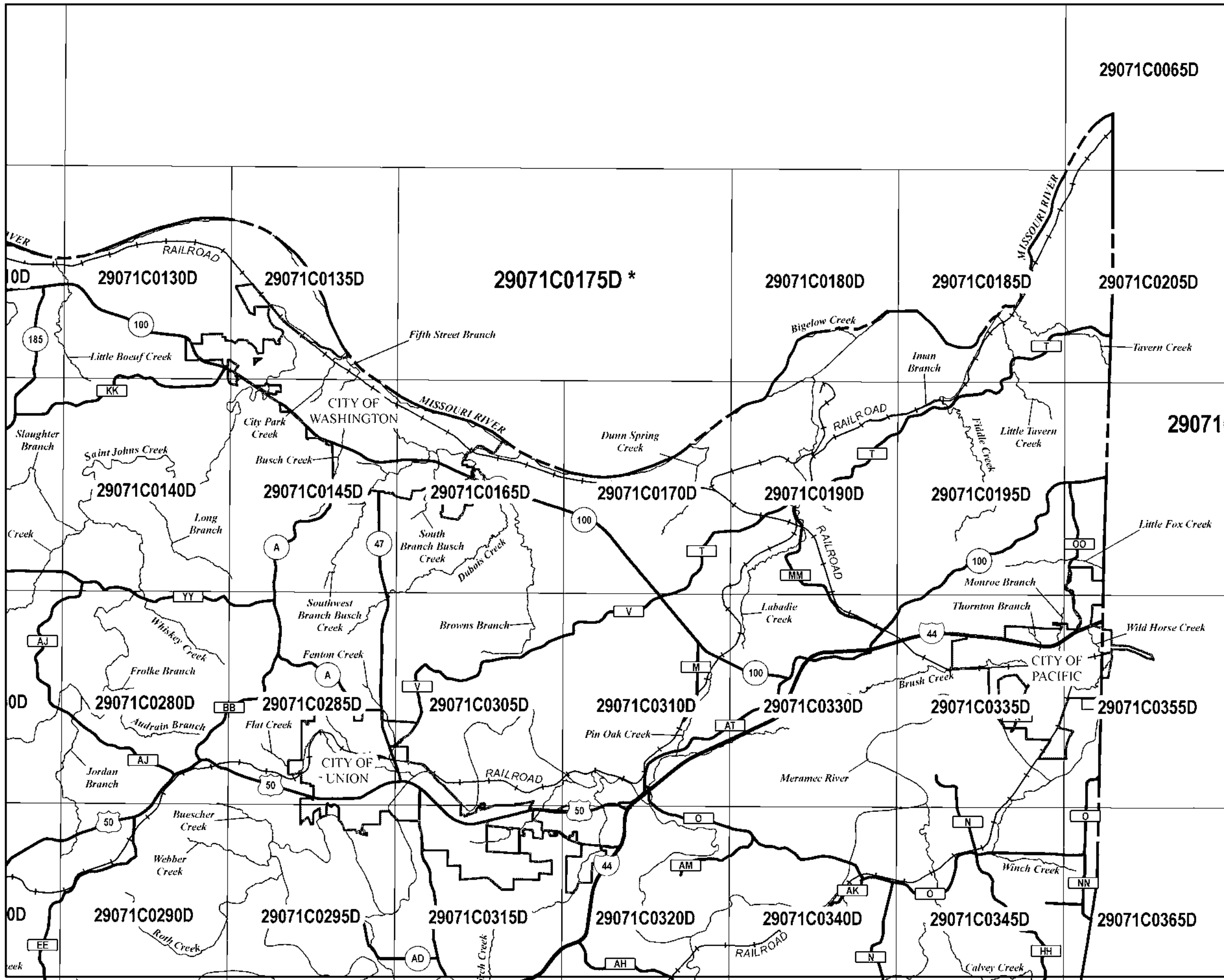














d 20910-3282






MAP INDEX

**FIRM**  
FLOOD INSURANCE RATE MAP  
FRANKLIN COUNTY,  
MISSOURI  
AND INCORPORATED AREAS  
(SEE LISTING OF COMMUNITIES TABLE)

**MAP INDEX**

PANELS PRINTED: 5, 10, 15, 20, 40, 65,  
100, 105, 110, 125, 130, 135, 140, 145, 165, 170,  
180, 185, 190, 195, 205, 225, 250, 255, 260, 265,  
270, 280, 285, 290, 295, 305, 310, 315, 320, 330,  
335, 340, 345, 355, 365, 380, 385, 390, 395, 405,  
410, 415, 420, 430, 435, 440, 445, 455, 460, 465,  
470, 480, 485, 490, 495, 525, 550, 555, 560, 580,  
585, 625, 650

 MAP NUMBER  
29071CIND0A  
EFFECTIVE DATE  
OCTOBER 18, 2011  
Federal Emergency Management Agency

This is an official copy of a portion of the above referenced flood map. It was extracted using F-MIT On-Line. This map does not reflect changes or amendments which may have been made subsequent to the date on the title block. For the latest product information about National Flood Insurance Program flood maps check the FEMA Flood Map Store at [www.msc.fema.gov](http://www.msc.fema.gov)

COMMUNITY NAME	COMMUNITY NUMBER	LOCATED ON PANELS	INITIAL NFIP MAP DATE	INITIAL FIRM DATE	MOST RECENT FIRM PANEL DATE
BERGER, CITY OF	290132	0015	AUGUST 30, 1974	JUNE 15, 1982	OCTOBER 18, 2011
FRANKLIN COUNTY UNINCORPORATED AREAS	290493	0005, 0010, 0015, 0020, 0040, 0065, 0100, 0105, 0110, 0125, 0130, 0135, 0140, 0145, 0165, 0170, 0180, 0185, 0190, 0195, 0205, 0225, 0250, 0255, 0260, 0265, 0270, 0280, 0285, 0290, 0295, 0305, 0310, 0315, 0320, 0330, 0335, 0340, 0345, 0355, 0365, 0380, 0385, 0390, 0395, 0405, 0410, 0415, 0420, 0430, 0435, 0440, 0445, 0455, 0460, 0465, 0470, 0480, 0485, 0490, 0495, 0525, 0550, 0555, 0560, 0580, 0585, 0625, 0650	JANUARY 17, 1978	OCTOBER 16, 1984	OCTOBER 18, 2011
GERALD, CITY OF <sup>1</sup>	290734	0250			
LESLIE, VILLAGE OF <sup>1</sup>	290304	0265			
MIRAMIGUOA PARK, VILLAGE OF	290992	0580, 0585	OCTOBER 18, 2011	OCTOBER 18, 2011	OCTOBER 18, 2011
NEW HAVEN, CITY OF	290133	0105	MARCH 5, 1976	FEBRUARY 18, 1981	OCTOBER 18, 2011
OAK GROVE, VILLAGE OF	290554	0560	JUNE 3, 1977	AUGUST 19, 1986	OCTOBER 18, 2011
PACIFIC, CITY OF	290134	0225, 0335, 0365	OCTOBER 26, 1973	MARCH 15, 1977	OCTOBER 18, 2011
PARKWAY, VILLAGE OF <sup>1</sup>	290532	0455			
ST. CLAR, CITY OF	290135	0315, 0435, 0455	OCTOBER 18, 2011	OCTOBER 18, 2011	OCTOBER 18, 2011
SULLIVAN, CITY OF	290136	0420, 0555, 0560, *0575	MARCH 29, 1974	JUNE 15, 1981	OCTOBER 18, 2011
UNION, CITY OF	290137	0285, 0295, 0305, 0310, 0315, 0320	MARCH 8, 1974	MARCH 2, 1983	OCTOBER 18, 2011
WASHINGTON, CITY OF	290138	0130, 0135, 0140, 0145, 0165	JANUARY 9, 1974	NOVEMBER 3, 1982	OCTOBER 18, 2011

<sup>1</sup> NO SPECIAL FLOOD HAZARD AREAS IDENTIFIED  
\* PANEL NOT PRINTED

MAP DATES

This FIRM index displays the map date for each FIRM panel at the time that this Index was printed. Because this Index may not be distributed to unaffected communities in subsequent revisions, users may determine the current map date for each FIRM panel by visiting the FEMA Map Service Center website at <http://msc.fema.gov> or by calling the FEMA Map Information eXchange, or FMIX at 1-877-336-2627.

Communities annexing land on adjacent FIRM panels must obtain a current copy of the adjacent panel as well as the current FIRM Index. These may be ordered directly from the FEMA Map Information eXchange, or FMIX at the number listed above.

FIRM Panel Dates For Printed Panels of Franklin County, MO and Incorporated Areas							
Panel	Effective Date	Panel	Effective Date	Panel	Effective Date	Panel	Effective Date
0005 D	OCTOBER 18, 2011	0190 D	OCTOBER 18, 2011	0335 D	OCTOBER 18, 2011	0460 D	OCTOBER 18, 2011
0010 D	OCTOBER 18, 2011	0195 D	OCTOBER 18, 2011	0340 D	OCTOBER 18, 2011	0465 D	OCTOBER 18, 2011
0015 D	OCTOBER 18, 2011	0205 D	OCTOBER 18, 2011	0345 D	OCTOBER 18, 2011	0470 D	OCTOBER 18, 2011
0020 D	OCTOBER 18, 2011	0225 D	OCTOBER 18, 2011	0355 D	OCTOBER 18, 2011	0480 D	OCTOBER 18, 2011
0040 D	OCTOBER 18, 2011	0250 D	OCTOBER 18, 2011	0365 D	OCTOBER 18, 2011	0485 D	OCTOBER 18, 2011
0065 D	OCTOBER 18, 2011	0255 D	OCTOBER 18, 2011	0380 D	OCTOBER 18, 2011	0490 D	OCTOBER 18, 2011
0100 D	OCTOBER 18, 2011	0260 D	OCTOBER 18, 2011	0385 D	OCTOBER 18, 2011	0495 D	OCTOBER 18, 2011
0105 D	OCTOBER 18, 2011	0265 D	OCTOBER 18, 2011	0390 D	OCTOBER 18, 2011	0525 D	OCTOBER 18, 2011
0110 D	OCTOBER 18, 2011	0270 D	OCTOBER 18, 2011	0395 D	OCTOBER 18, 2011	0550 D	OCTOBER 18, 2011
0125 D	OCTOBER 18, 2011	0280 D	OCTOBER 18, 2011	0405 D	OCTOBER 18, 2011	0555 D	OCTOBER 18, 2011
0130 D	OCTOBER 18, 2011	0285 D	OCTOBER 18, 2011	0410 D	OCTOBER 18, 2011	0560 D	OCTOBER 18, 2011
0135 D	OCTOBER 18, 2011	0290 D	OCTOBER 18, 2011	0415 D	OCTOBER 18, 2011	0580 D	OCTOBER 18, 2011
0140 D	OCTOBER 18, 2011	0295 D	OCTOBER 18, 2011	0420 D	OCTOBER 18, 2011	0585 D	OCTOBER 18, 2011
0145 D	OCTOBER 18, 2011	0305 D	OCTOBER 18, 2011	0430 D	OCTOBER 18, 2011	0625 D	OCTOBER 18, 2011
0165 D	OCTOBER 18, 2011	0310 D	OCTOBER 18, 2011	0435 D	OCTOBER 18, 2011	0650 D	OCTOBER 18, 2011
0170 D	OCTOBER 18, 2011	0315 D	OCTOBER 18, 2011	0440 D	OCTOBER 18, 2011		
0180 D	OCTOBER 18, 2011	0320 D	OCTOBER 18, 2011	0445 D	OCTOBER 18, 2011		
0185 D	OCTOBER 18, 2011	0330 D	OCTOBER 18, 2011	0455 D	OCTOBER 18, 2011		

d 20910-3282



NFIP

NATIONAL FLOOD INSURANCE PROGRAM

MAP INDEX

FIRM

FLOOD INSURANCE RATE MAP

FRANKLIN COUNTY,  
MISSOURI  
AND INCORPORATED AREAS

(SEE LISTING OF COMMUNITIES TABLE)

MAP INDEX

PANELS PRINTED:

5, 10, 15, 20, 40, 65,  
100, 105, 110, 125, 130, 135, 140, 145, 165, 170,  
180, 185, 190, 195, 205, 225, 250, 255, 260, 265,  
270, 280, 285, 290, 295, 305, 310, 315, 320, 330,  
335, 340, 345, 355, 365, 380, 385, 390, 395, 405,  
410, 415, 420, 430, 435, 440, 445, 465, 466, 465,  
470, 480, 485, 490, 495, 525, 550, 555, 560, 580,  
585, 625, 650

MAP NUMBER  
29071CIND0A  
EFFECTIVE DATE  
OCTOBER 18, 2011  
Federal Emergency Management Agency

This is an official copy of a portion of the above referenced flood map. It was extracted using F-MIT On-Line. This map does not reflect changes or amendments which may have been made subsequent to the date on the title block. For the latest product information about National Flood Insurance Program flood maps check the FEMA Flood Map Store at [www.msc.fema.gov](http://www.msc.fema.gov)



1000000 FT

995000 FT

38° 33' 45"

90° 52' 30"

686°00'00"E

687°00'00"E

JOINS PANEL 0190

NOTE: MAP AREA SHOWN ON THIS PANEL IS LOCATED  
WITHIN TOWNSHIP 44 NORTH, RANGE 1 EAST  
AND TOWNSHIP 44 NORTH, RANGE 2 EAST.

ZONE AE

PROFILE  
BASE LINE

Labadie  
Creek

Missouri



MAP SCALE 1" = 1000'

0 0 1000 2000 FEET

NFIP

NATIONAL FLOOD INSURANCE PROGRAM

PANEL 0180D

**FIRM**

FLOOD INSURANCE RATE MAP

**FRANKLIN COUNTY,  
MISSOURI  
AND INCORPORATED AREAS**

**PANEL 180 OF 650**

(SEE LOCATOR DIAGRAM OR MAP INDEX  
FOR FIRM PANEL LAYOUT)

CONTAINS:

COMMUNITY	NUMBER	PANEL	SUFFIX
FRANKLIN COUNTY	290493	0180	D

Notice to User: The Map Number shown below should be used  
when placing map orders. The Community Number shown above  
should be used on insurance applications for the subject community.



**MAP NUMBER  
29071C0180D**

**EFFECTIVE DATE  
OCTOBER 18, 2011**

Federal Emergency Management Agency

This is an official copy of a portion of the above referenced flood map. It  
was extracted using F-MIT On-Line. This map does not reflect changes  
or amendments which may have been made subsequent to the date on the  
title block. For the latest product information about National Flood Insurance  
Program flood maps check the FEMA Flood Map Store at [www.msc.fema.gov](http://www.msc.fema.gov)