

Dear Secretary:

Sending three documents to be late-filed exhibits of case
NO: SO-2007-0071. JOHN KOLISCH

FILED²

DEC 27 2006

Missouri Public
Service Commission

BEFORE THE PUBLIC SERVICE COMMISSION
OF THE STATE OF MISSOURI

In the Matter of the Application of Central Jefferson)
County Utilities, Inc. for an Order Authorizing the)
Transfer and Assignment of Certain Water and) **Case No. SO-2007-0071, et al.**
Sewer Assets to Jefferson County Public Sewer)
District and in Connection Therewith, Certain Other)
Related Transactions)

ORDER REQUIRING LATE-FILED EXHIBIT AND DIRECTING
RESPONSE TO THAT EXHIBIT

Issue Date: December 22, 2006

Effective Date: December 22, 2006

On December 19 and 20, 2006, an evidentiary hearing was held in this matter. During the hearing, several questions were directed to witness John Kolisch regarding the specific lot numbers that were the subject of connection fees which Mr. Kolisch claimed would be rightfully his should new customers connect to the water and sewer lines which he contributed to Central Jefferson County Utilities, Inc. While on the witness stand, Mr. Kolisch indicated that he could provide the Commission with a list of the lots at issue and the Commission directed Mr. Kolisch to file a document delineating the specific lots in question and identifying which connections were at issue with those lots, i.e. water, sewer or both. Mr. Kolisch will be directed to file this document as a late-filed exhibit, which shall be marked as Exhibit Number 26.

IT IS ORDERED THAT:

1. No later than January 2, 2007, John Kolisch shall file with the Commission a document as outlined in the body of this order that will be designated as Exhibit Number 26.

2. Any party wishing to respond to the late-filed exhibit shall do so no later than January 9, 2007.

3. This order shall become effective on December 22, 2006.

BY THE COMMISSION

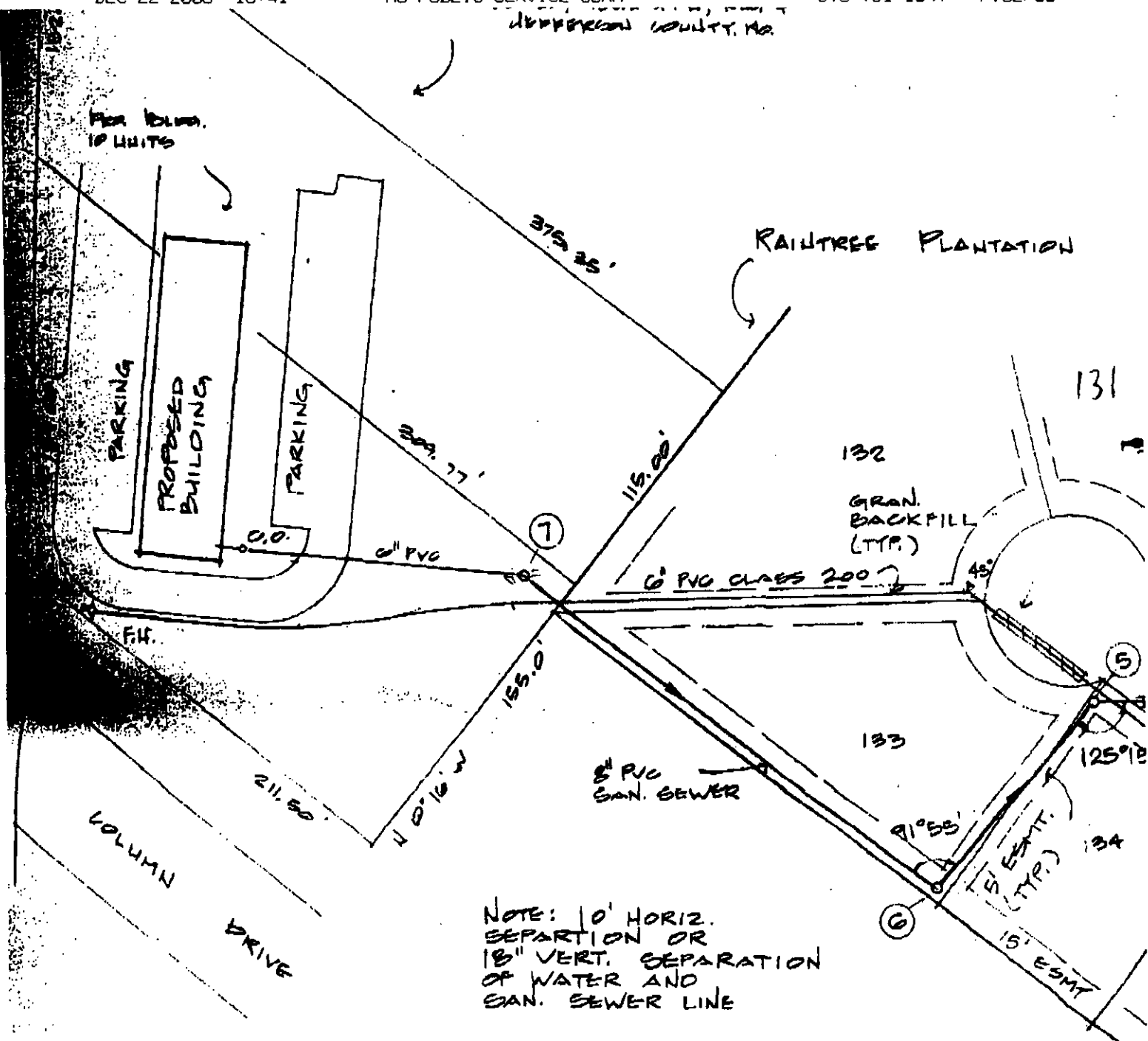
Colleen M. Dale
Secretary

(S E A L)

Harold Stearley, Regulatory Law Judge,
by delegation of authority pursuant
to Section 386.240, RSMo 2000.

Dated at Jefferson City, Missouri,
on this 22nd day of December, 2006.

JEFFERSON COUNTY, MO.



NOTE: 10' HORIZ.
SEPARATION OR
18" VERT. SEPARATION
OF WATER AND
SAN. SEWER LINE

FILED²

DEC 27 2006

Missouri Public
Service Commission

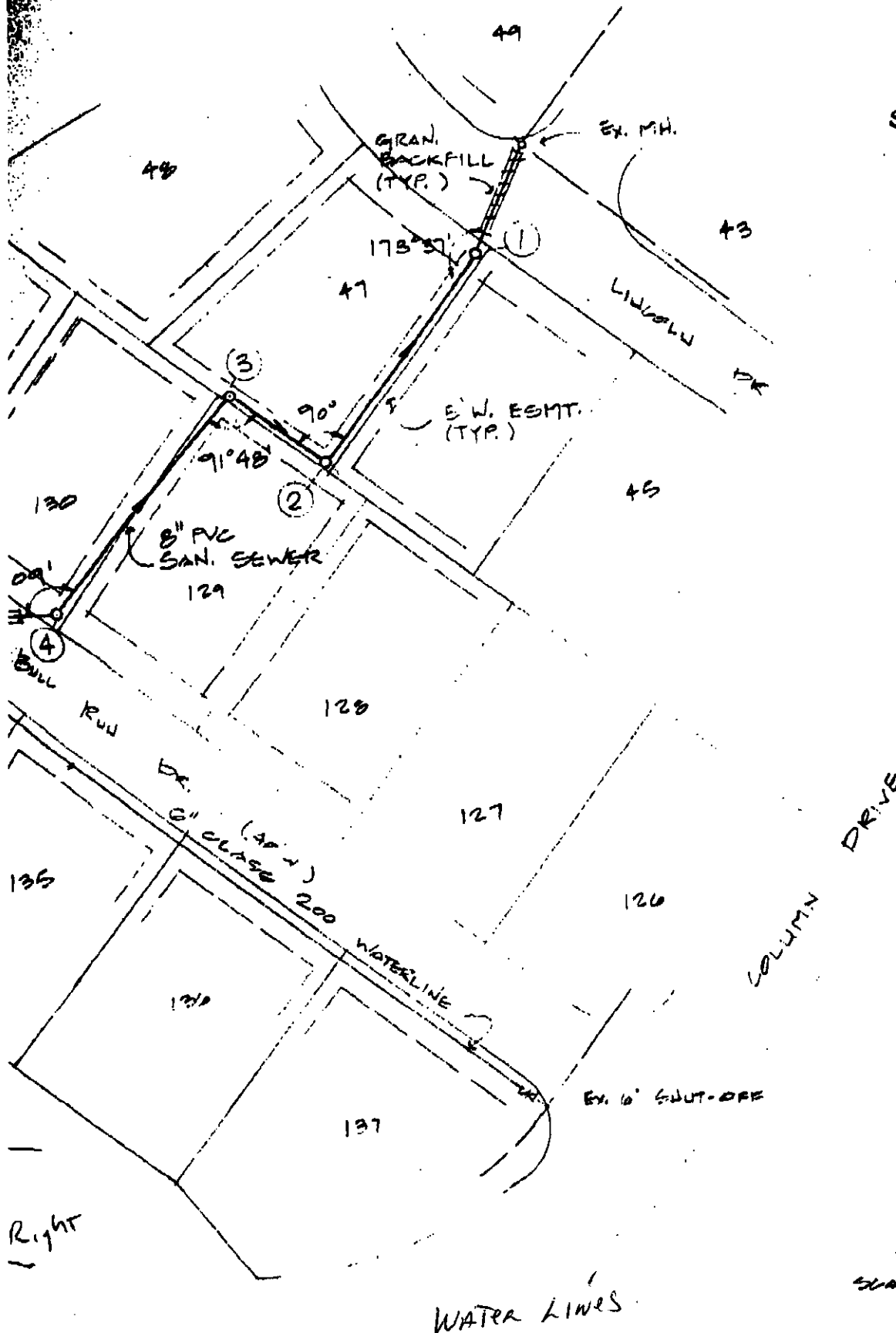
Water Lines

Left

FILED²

DEC 27 2006

Missouri Public
Service Commission



SCALE 1" = 50'