



February 10, 2011

Joe Cothorn
U.S. EPA Region VII
901 N. 5th Street
Kansas City, MO 66101

Re: Clean Line Energy Partners' Proposed Grain Belt Clean Line Transmission Project

Dear Mr. Cothorn:

Clean Line Energy Partners LLC (Clean Line) is seeking your input on our proposed project to develop, construct and operate the Grain Belt Express Clean Line transmission project ("project"). Clean Line is a privately-owned company focused on developing high voltage direct current (HVDC) transmission lines that would connect the best renewable energy resource regions to communities and cities that have limited access to renewable energy. The proposed project will be capable of moving up to 3,500 megawatts (MW) of renewable energy from the wind-rich region of southwestern Kansas to southeastern Missouri and markets farther east.

Clean Line has retained The Louis Berger Group, Inc. (Berger) to conduct a siting study for the proposed project. We would like to request the following, and, if available, any Geographic Information Systems data identifying their location:

- | | |
|----------------|--|
| NPL | USEPA Superfund Sites, National Priorities List |
| CERCLIS | USEPA Potential Superfund Sites |
| RCRA-LgGen | USEPA RCRA Large Quantity Generators |
| RCRA-SmGen | USEPA RCRA Small Quantity Generators |
| RCRA-TSD | USEPA RCRA Treatment, Storage and Disposal Sites |
| RCRA-Transp | USEPA RCRA Transporters |
| ERNS | USEPA Emergency Response Notification System |
| HWMP-UST/ LUST | KDHE UST and LUST Sites |
| HWMP-CERCLIS | KDHE Superfund Sites |
| HWMP-RCRIS | KDHE RCRA Sites |
| HWMP-Registry | KDHE Registry of Confirmed or Abandoned or Uncontrolled
Hazardous Waste Sites |
| HWMP-VCP | KDHE Voluntary Cleanup Program Sites |

The development and environmental permitting process for this project will be a multi-year process, and we are still in a relatively early phase. This coordination will be the first of many opportunities for agencies to participate in the review of this project because Clean Line will need to obtain federal, state, and local permits from the appropriate agencies. A member of our project team will be contacting you in the next few weeks to schedule a follow-up meeting for a more interactive discussion of the project, to present the status of our studies, and to solicit your input on the siting process and corridor alternatives. Construction is anticipated to take approximately two years. Under the current schedule, Clean Line is proposing the project to be in service by the end of 2016.



The Grain Belt Express Clean Line, as currently proposed, will begin near the Spearville substation in Ford County, Kansas and end in southeastern Missouri near the St. Francois substation in St. Francois County, Missouri.

Proposed project facilities include a converter station and possibly ground beds at each terminus, two sets of bundled wire conductors per HVDC circuit, shield wire, and conductor support structures. Clean Line is proposing steel structures ranging in height from 120 to 150 feet that are spaced approximately 800 to 1,200 feet apart. The design and dimensions may vary based on terrain and other engineering considerations.

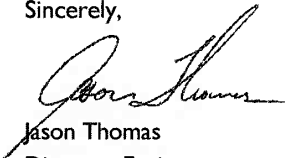
Please reply with your comments in writing and/or by email at your earliest convenience to:

Stephen Parker, Project Manager
The Louis Berger Group, Inc.
4050 Pennsylvania Avenue, Suite 121
Kansas City, MO 64111
sparker@louisberger.com

Although the route for the project has not been identified, the attached Overview Maps shows the entire project siting study area. We have also included a list of counties within the study area boundary. Upon request, the Louis Berger team can provide you with the electronic GIS boundary for the study area. Any additional comments or concerns you have that would assist us in siting the project would be greatly appreciated.

Thank you in advance for your assistance and please do not hesitate to contact Mr. Parker or me if you need additional information.

Sincerely,



Jason Thomas
Director, Environment
Clean Line Energy Partners
cell 713-805-6840
tel 832-319-6357
jthomas@cleanlineenergy.com



Stephen Parker
Senior Scientist
The Louis Berger Group, Inc.
cell 816-674-1110
tel 816-398-8658
sparker@louisberger.com

Attachments:

- I. Project Overview Maps
- II. List of Counties within the Study Area

Cc: Mark Lawlor, Clean Line Energy Partners
Diana Coggin, Clean Line Energy Partners

Missouri Counties within Study Area			
Clay	Cooper	Johnson	Polk
Audrain	Crawford	Laclede	Pulaski
Barton	Dade	Lafayette	Randolph
Bates	Dallas	Lawrence	Ray
Benton	Dent	Livingston	Reynolds
Boone	Douglas	Madison	Saline
Buchanan	Franklin	Maries	Shannon
Caldwell	Gasconade	Miller	St. Charles
Callaway	Greene	Moniteau	St. Clair
Camden	Henry	Montgomery	St. Francois
Carroll	Hickory	Morgan	Ste. Genevieve
Cass	Howard	Newton	Texas
Cedar	Howell	Osage	Vernon
Chariton	Iron	Perry	Warren
Christian	Jackson	Pettis	Washington
Clinton	Jasper	Phelps	Webster
Cole	Jefferson	Platte	Wright

Kansas Counties within Study Area			
Allen	Doniphan	Kiowa	Pawnee
Anderson	Douglas	Labette	Pottawatomie
Atchison	Edwards	Leavenworth	Pratt
Barber	Elk	Lincoln	Reno
Barton	Ellis	Linn	Rice
Bourbon	Ellsworth	Lyon	Riley
Brown	Finney	Marion	Rush
Butler	Ford	Marshall	Russell
Chase	Franklin	McPherson	Saline
Chautauqua	Geary	Meade	Sedgwick
Cherokee	Gray	Miami	Shawnee
Clark	Greenwood	Mitchell	Stafford
Clay	Harper	Montgomery	Sumner
Cloud	Harvey	Morris	Wabaunsee
Coffey	Hodgeman	Nemaha	Washington
Comanche	Jackson	Neosho	Wilson
Cowley	Jefferson	Ness	Woodson
Crawford	Johnson	Osage	Wyandotte
Dickinson	Kingman	Ottawa	



February 10, 2011

Charlie Scott, Field Supervisor
Columbia Ecological Services Field Office
U.S. Fish and Wildlife Service
101 Park DeVille Dr., Suite A
Columbia, MO 65203-0057

Re: Clean Line Energy Partners' Proposed Grain Belt Clean Line Transmission Project

Dear Mr. Scott:

Clean Line Energy Partners LLC (Clean Line) is seeking your input on our proposed project to develop, construct and operate the Grain Belt Express Clean Line transmission project ("project"). Clean Line is a privately-owned company focused on developing high voltage direct current (HVDC) transmission lines that would connect the best renewable energy resource regions to communities and cities that have limited access to renewable energy. The proposed project will be capable of moving up to 3,500 megawatts (MW) of renewable energy from the wind-rich region of southwestern Kansas to southeastern Missouri and markets farther east.

Clean Line has retained The Louis Berger Group, Inc. (Berger) to conduct a siting study for the proposed project. In accordance with the Endangered Species Act of 1973 (16 U.S.C. 1531-1544 as amended) we would like to request your comments on the project's potential to have adverse effects on federally threatened or endangered species. The development and environmental permitting process for this project will be a multi-year process, and we are still in a relatively early phase. This coordination will be the first of many opportunities for agencies to participate in the review of this project because Clean Line will need to obtain federal, state, and local permits from the appropriate agencies. A member of our project team will be contacting you in the next few weeks to schedule a follow-up meeting for a more interactive discussion of the project, to present the status of our studies, and to solicit your input on the siting process and corridor alternatives. Construction is anticipated to take approximately two years. Under the current schedule, Clean Line is proposing the project to be in service by the end of 2016.

The Grain Belt Express Clean Line, as currently proposed, will begin near the Spearville substation in Ford County, Kansas and end in southeastern Missouri near the St. Francois substation in St. Francois County, Missouri.

Proposed project facilities include a converter station and possibly ground beds at each terminus, two sets of bundled wire conductors per HVDC circuit, shield wire, and conductor support structures. Clean Line is proposing steel structures ranging in height from 120 to 150 feet that are spaced approximately 800 to 1,200 feet apart. The design and dimensions may vary based on terrain and other engineering considerations.



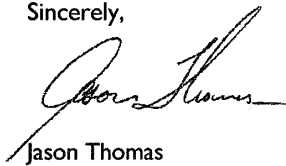
Please reply with your comments in writing and/or by email at your earliest convenience to:

Stephen Parker, Project Manager
The Louis Berger Group, Inc.
4050 Pennsylvania Avenue, Suite 121
Kansas City, MO 64111
sparker@louisberger.com

Although the route for the project has not been identified, the attached Overview Maps shows the entire project siting study area. We have also included a list of counties within the study area boundary. Upon request, the Louis Berger team can provide you with the electronic GIS boundary for the study area. Any additional comments or concerns you have that would assist us in siting the project would be greatly appreciated.

Thank you in advance for your assistance and please do not hesitate to contact Mr. Parker or me if you need additional information.

Sincerely,



Jason Thomas
Director, Environment
Clean Line Energy Partners
cell 713-805-6840
tel 832-319-6357
jthomas@cleanlineenergy.com



Stephen Parker
Senior Scientist
The Louis Berger Group, Inc.
cell 816-674-1110
tel 816-398-8658
sparker@louisberger.com

Attachments:

- I. Project Overview Maps
- II. List of Counties within the Study Area

Cc: Mark Lawlor, Clean Line Energy Partners
Diana Coggin, Clean Line Energy Partners

Missouri Counties within Study Area			
Clay	Cooper	Johnson	Polk
Audrain	Crawford	Laclede	Pulaski
Barton	Dade	Lafayette	Randolph
Bates	Dallas	Lawrence	Ray
Benton	Dent	Livingston	Reynolds
Boone	Douglas	Madison	Saline
Buchanan	Franklin	Maries	Shannon
Caldwell	Gasconade	Miller	St. Charles
Callaway	Greene	Moniteau	St. Clair
Camden	Henry	Montgomery	St. Francois
Carroll	Hickory	Morgan	Ste. Genevieve
Cass	Howard	Newton	Texas
Cedar	Howell	Osage	Vernon
Chariton	Iron	Perry	Warren
Christian	Jackson	Pettis	Washington
Clinton	Jasper	Phelps	Webster
Cole	Jefferson	Platte	Wright



United States Department of the Interior

FISH AND WILDLIFE SERVICE
Missouri Ecological Services Field Office
101 Park DeVille Drive, Suite A
Columbia, Missouri 65203-0057
Phone: (573) 234-2132 Fax: (573) 234-2181



January 12, 2014

John Kuba
1001 McKinney, Suite 700
Houston, Texas 77002

Dear Mr. Kuba:

This letter is in regards to the preliminary routing network for the proposed 600 kV Grain Belt Express transmission line from western Kansas to southern Indiana. The preliminary network was presented to my staff on December 5, 2013 during a webinar with representatives from Clean Line and the Louis Berger Group. Also participating in the webinar were staff from the Service's Rock Island Illinois Field Office and from the Missouri Department of Conservation. The comments herein are offered on behalf of the Columbia Missouri Ecological Services Field Office of the U.S. Fish and Wildlife Service (Service) under the authority of the Fish and Wildlife Coordination Act (16 U.S.C. 661 et seq.), National Environmental Policy Act of 1969 (42 U.S.C. 4321-4347), Bald and Golden Eagle Protection Act (16 U.S.C. 668-668d), Migratory Bird Treaty Act (16 U.S.C. 703-712), and the Endangered Species Act of 1973, as amended (16 U.S.C. 1531-1544).

Western Portion of the Line

For the western half of the routing network in Missouri (Buchanan County to Chariton County), we recommend selecting the southern route with a terminal slightly east of Keytesville (Figure 1). The northern route intersects the Lower Grand River Conservation Opportunity Area and the Lower Grand River Wetlands Important Bird Area which contain a network of conservation lands including Swan Lake National Wildlife Refuge, Pershing State Park, and Fountain Grove Conservation Area. These lands support large numbers of migratory birds, especially shorebirds, waterbirds, and waterfowl; and birds are known to move between wetlands on these lands and those in surrounding areas. Placing a large transmission line within areas containing large numbers of migrating birds, especially those with long wingspans, heavy bodies, and poor maneuverability (e.g., ducks, geese, pelicans, herons, etc.), greatly increases the likelihood and frequency of collisions with power lines. While various measures can be implemented to reduce these impacts, the most effective measure is to site transmission lines away from these important bird areas.

According to information you provided during the December 5, 2013 webinar, sections of the southern route would parallel an existing right-of-way for the Rockies Express -West pipeline. Because paralleling an existing right-of-way would reduce the amount of fragmentation to

forested habitat, we further support selection of the southern route.

Eastern Portion of the Line

During the webinar on December 5, 2013, you explained that one of the routes on the eastern half of the line in Missouri (roughly from Moberly to New London) would also parallel an existing right-of-way for approximately 70 percent of the route (Figure 1). While all possible routes for this portion of the line will intersect Indiana bat (*Myotis sodalis*, federally endangered) and northern long-eared bat (*Myotis septentrionalis*, proposed for listing as federally endangered) roosting habitat, this routing option would result in less habitat fragmentation than the other two possible routes. Migratory birds would also benefit from reducing fragmentation of forested habitat. Therefore, we recommend selection of this route for the eastern half of the line in Missouri.

Mississippi River Crossing

During the webinar on December 5, 2013, you also described options for where the proposed Grain Belt line will cross the Mississippi River. These options include: (1) across McDonald Island near mile 313; (2) north of Saverton Island near mile 303; (3) between Browns Island and Jim Young Island near mile 300; (4) across Blackburn Island near mile 284, also referred to as the Louisiana crossing; and (5) across Pharrs Island near mile 276, also referred to as the Clarksville crossing. You stated that the McDonald Island and the Louisiana crossings have been eliminated from the options, however; thus so our comments pertain only to the remaining three crossings.

With each of proposed options, bald eagles (*Haliaeetus leucocephalus*) have the potential to be negatively impacted by the presence of the transmission lines. Eagles, as well as other migratory birds, can collide with the transmission lines, resulting in injury or death. The height of the structures at the river crossings (estimated as 200-300 feet) will increase this risk given that the probability of bird strikes increases as the height of the structures increase. While not common, electrocution of eagles and other birds with large wingspans can also occur. Based on these risks, we recommend that Clean Line select a route other than the route crossing the Mississippi River downstream of the lock and near Saverton, Missouri (between Browns Island and Jim Young Island near mile 300). At this location, bald eagles are known to occur in high concentrations and may collide with transmission lines even if line markers are employed. Please refer to the Service's Rock Island Illinois Ecological Services Field Office for comments regarding impacts to aquatic species in the Mississippi River, such as the pallid sturgeon (*Scaphirhynchus albus*, federally endangered) and Higgins eye pearl mussel (*Lampsilis higginsii*; federally endangered).

In summary, we recommend selecting the southern route on the west half of the line, the center route on the east side of the line, and a route which does not cross the Mississippi River downstream of the lock and dam near river mile 300 at Saverton, Missouri (Figure 1). While we recognize that all routes will result in some level of impacts to natural resources, we recommend selection of these routes in order to reduce impacts to fish and wildlife resources.

We appreciate the opportunity to provide comments on the proposed transmission line and the efforts of Clean Line to reduce impacts to fish and wildlife. If you have questions concerning this response, please contact Trisha Crabill at (573) 234-2132, extension 121.

Sincerely,



Amy Salveter
Field Supervisor

Enclosures

cc: MDC, Jefferson City, MO (Attn: Policy Coordination)
USFWS, Manhattan Kansas Field Office, Manhattan, KS
USFWS, Rock Island Field Office, Rock Island, IL

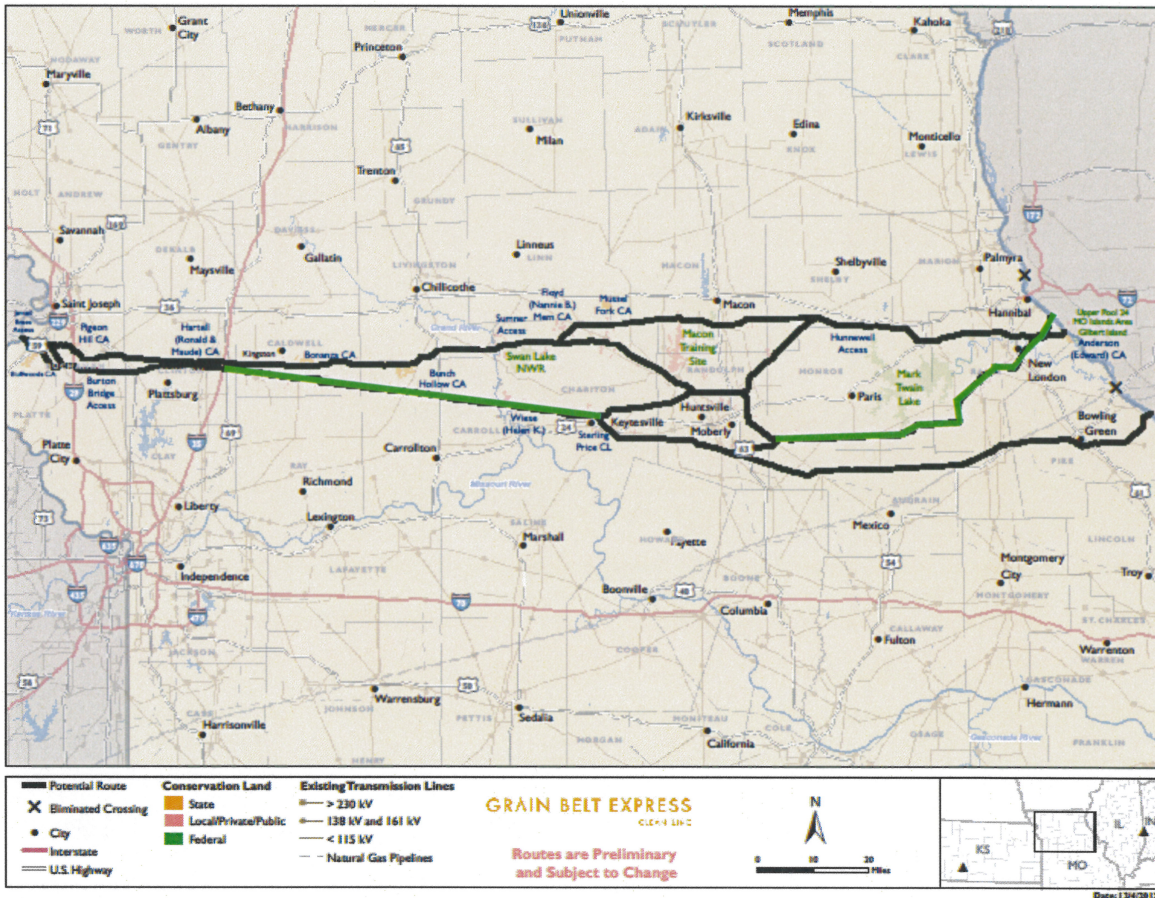


Figure 1. Preliminary routing network for the proposed Grain Belt Express Line, provided during the December 5, 2013 webinar. Highlighted in green are routes resulting in less impacts to migratory birds and federally threatened and endangered species and thus recommended by the Columbia Missouri Ecological Services Field Office of the U.S. Fish and Wildlife Service (Service). Segments with no highlighted routes represent routing options for which the Service has no preference.

February 9, 2011

Mark Frazier
U.S. Army Corps of Engineers
Regulatory Division
Attn: OD-R, Rm 706
601 E. 12th Street
Kansas City, MO 64106

Re: Clean Line Energy Partners' Proposed Grain Belt Clean Line Transmission Project

Dear Mr. Frazier:

Clean Line Energy Partners LLC (Clean Line) is seeking your input on our proposed project to develop, construct and operate the Grain Belt Express Clean Line transmission project ("project"). Clean Line is a privately-owned company focused on developing high voltage direct current (HVDC) transmission lines that would connect the best renewable energy resource regions to communities and cities that have limited access to renewable energy. The proposed project will be capable of moving up to 3,500 megawatts (MW) of renewable energy from the wind-rich region of southwestern Kansas to southeastern Missouri and markets farther east.

Clean Line has retained The Louis Berger Group, Inc. (Berger) to conduct a siting study for the proposed project. We would like to request your comments in the form of an agency coordination letter. The development and environmental permitting process for this project will be a multi-year process, and we are still in a relatively early phase. This coordination will be the first of many opportunities for agencies to participate in the review of this project because Clean Line will need to obtain federal, state, and local permits from the appropriate agencies. A member of our project team will be contacting you in the next few weeks to schedule a follow-up meeting for a more interactive discussion of the project, to present the status of our studies, and to solicit your input on the siting process and corridor alternatives. Construction is anticipated to take approximately two years. Under the current schedule, Clean Line is proposing the project to be in service by the end of 2016.

The Grain Belt Express Clean Line, as currently proposed, will begin near the Spearville substation in Ford County, Kansas and end in southeastern Missouri near the St. Francois substation in St. Francois County, Missouri.

Proposed project facilities include a converter station and possibly ground beds at each terminus, two sets of bundled wire conductors per HVDC circuit, shield wire, and conductor support structures.



Clean Line is proposing steel structures ranging in height from 120 to 150 feet that are spaced approximately 800 to 1,200 feet apart. The design and dimensions may vary based on terrain and other engineering considerations.

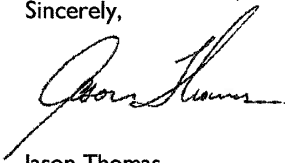
Please reply with your comments in writing and/or by email at your earliest convenience to:

Stephen Parker, Project Manager
The Louis Berger Group, Inc.
4050 Pennsylvania Avenue, Suite 121
Kansas City, MO 64111
sparker@louisberger.com

Although the route for the project has not been identified, the attached Overview Maps shows the entire project siting study area. We have also included a list of counties within the study area boundary. Upon request, the Louis Berger team can provide you with the electronic GIS boundary for the study area. Any additional comments or concerns you have that would assist us in siting the project would be greatly appreciated.

Thank you in advance for your assistance and please do not hesitate to contact Mr. Parker or me if you need additional information.

Sincerely,



Jason Thomas
Director, Environment
Clean Line Energy Partners
cell 713-805-6840
tel 832-319-6357
jthomas@cleanlineenergy.com



Stephen Parker
Senior Scientist
The Louis Berger Group, Inc.
cell 816-674-1110
tel 816-398-8658
sparker@louisberger.com

Attachments:

- I. Project Overview Maps
- II. List of Counties within the Study Area

Cc: Mark Lawlor, Clean Line Energy Partners
Diana Coggin, Clean Line Energy Partners

Missouri Counties within Study Area			
Clay	Cooper	Johnson	Polk
Audrain	Crawford	Laclede	Pulaski
Barton	Dade	Lafayette	Randolph
Bates	Dallas	Lawrence	Ray
Benton	Dent	Livingston	Reynolds
Boone	Douglas	Madison	Saline
Buchanan	Franklin	Maries	Shannon
Caldwell	Gasconade	Miller	St. Charles
Callaway	Greene	Moniteau	St. Clair
Camden	Henry	Montgomery	St. Francois
Carroll	Hickory	Morgan	Ste. Genevieve
Cass	Howard	Newton	Texas
Cedar	Howell	Osage	Vernon
Chariton	Iron	Perry	Warren
Christian	Jackson	Pettis	Washington
Clinton	Jasper	Phelps	Webster
Cole	Jefferson	Platte	Wright

Kansas Counties within Study Area			
Allen	Doniphan	Kiowa	Pawnee
Anderson	Douglas	Labette	Pottawatomie
Atchison	Edwards	Leavenworth	Pratt
Barber	Elk	Lincoln	Reno
Barton	Ellis	Linn	Rice
Bourbon	Ellsworth	Lyon	Riley
Brown	Finney	Marion	Rush
Butler	Ford	Marshall	Russell
Chase	Franklin	McPherson	Saline
Chautauqua	Geary	Meade	Sedgwick
Cherokee	Gray	Miami	Shawnee
Clark	Greenwood	Mitchell	Stafford
Clay	Harper	Montgomery	Sumner
Cloud	Harvey	Morris	Wabaunsee
Coffey	Hodgeman	Nemaha	Washington
Comanche	Jackson	Neosho	Wilson
Cowley	Jefferson	Ness	Woodson
Crawford	Johnson	Osage	Wyandotte
Dickinson	Kingman	Ottawa	



REPLY TO
ATTENTION OF

DEPARTMENT OF THE ARMY
KANSAS CITY DISTRICT, CORPS OF ENGINEERS
635 FEDERAL BUILDING
601 E 12TH STREET
KANSAS CITY MO 64106-2824

March 17, 2011

Regulatory Branch
(NWK-2011-0199)
(Multiple Counties, KS & MO)

Mr. Stephen Parker
The Louis Berger Group, Inc.
4050 Pennsylvania Avenue, Suite 121
Kansas City, Missouri 64111

Dear Mr. Parker,

This is in response to your inquiry, for the proposed Grain Belt Clean Line Transmission Project, received on February 14, 2011. The project will be located in Kansas and Missouri. The Kansas City District, Little Rock District, and St. Louis District will coordinate to facilitate consistency and communication in the permitting process.

The Corps of Engineers has jurisdiction over all waters of the United States. Discharges of dredged or fill material in waters of the United States, including wetlands, require prior authorization from the Corps under Section 404 of the Clean Water Act (Title 33 United States Code Section 1344). The implementing regulation for this Act is found at Title 33 Code of Federal Regulations Parts 320-332. Any work or structures in, over, or under a navigable water of the United States, require prior authorization from the Corps of Engineers under Section 10 of the Rivers and Harbors Act of 1899 (33 USC 403). Please see enclosed exhibit of approximate Section 10 waters within the study area.

To comply with the National Environmental Policy Act, we require notice of any federal funding, regulatory oversight or permit requirements you know of for our determination to establish a lead federal agency.

Federal regulations require that a Department of the Army (DA) permit be issued by the Corps of Engineers prior to the initiation of any construction on the portion of a proposed activity which is within the Corps' regulatory jurisdiction.

We are interested in your thoughts and opinions concerning your experience with the Kansas City District, Corps of Engineers Regulatory Program. We have placed an automated version of our Customer Service Survey form at: <http://per2.nwp.usace.army.mil/survey.html>. At your request, we will mail you a paper copy that you may complete and return to us by mail or fax.

Printed on  Recycled Paper

The Kansas City District will be the lead district associated with this project; Ms. Kailey Rippen is the project manager. The Kansas City District will coordinate with Ms. Cynthia Blansett and Ms. Sarah Chitwood of the Little Rock District; and Ms. Jennifer Brown of the St. Louis District.

If you have any questions concerning this matter, please feel free to contact Ms. Kailey Rippen at 816-389-2123 (FAX 816-389-2032). Please reference Permit No. 2011-0199 in all comments and/or inquiries relating to this project.

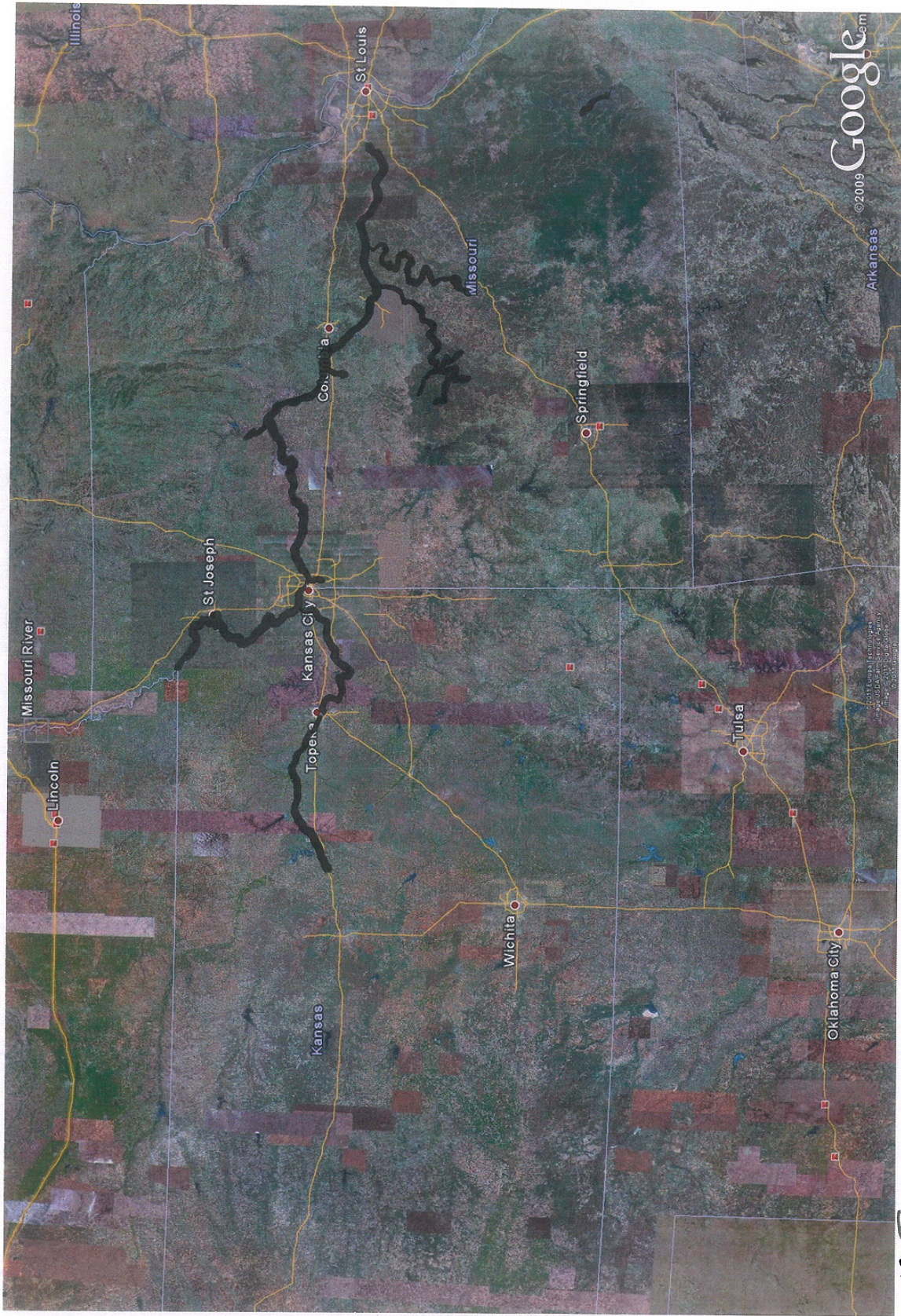
Sincerely

Kailey Rippen
Project Manager
Regulatory Branch

Enclosure

Copy Furnished (electronically w/o enclosure)

Ms. Cynthia Blansett
Little Rock District Corps of Engineers, Regulatory Branch
Ms. Jennifer Brown
St. Louis District Corps of Engineers, Regulatory Branch
Environmental Protection Agency,
Watershed Planning and Implementation Branch
U.S. Fish and Wildlife Service, Manhattan, Kansas
Kansas Department of Wildlife and Parks
Kansas Department of Health and Environment
Kansas Department of Agriculture
U.S. Fish and Wildlife Service, Columbia, Missouri
Missouri Department of Natural Resources,
Water Protection Program
Missouri Department of Conservation
Missouri Department of Natural Resources,
State Historic Preservation Office



EXHIBIT

Approximate Section 10 waters

February 9, 2011

Brian Johnson
U.S. Army Corps of Engineers
CE-MVS-PA
1222 Spruce St.
St. Louis, MO 63103

Re: Clean Line Energy Partners' Proposed Grain Belt Clean Line Transmission Project

Dear Mr. Johnson:

Clean Line Energy Partners LLC (Clean Line) is seeking your input on our proposed project to develop, construct and operate the Grain Belt Express Clean Line transmission project ("project"). Clean Line is a privately-owned company focused on developing high voltage direct current (HVDC) transmission lines that would connect the best renewable energy resource regions to communities and cities that have limited access to renewable energy. The proposed project will be capable of moving up to 3,500 megawatts (MW) of renewable energy from the wind-rich region of southwestern Kansas to southeastern Missouri and markets farther east.

Clean Line has retained The Louis Berger Group, Inc. (Berger) to conduct a siting study for the proposed project. We would like to request your comments in the form of an agency coordination letter. The development and environmental permitting process for this project will be a multi-year process, and we are still in a relatively early phase. This coordination will be the first of many opportunities for agencies to participate in the review of this project because Clean Line will need to obtain federal, state, and local permits from the appropriate agencies. A member of our project team will be contacting you in the next few weeks to schedule a follow-up meeting for a more interactive discussion of the project, to present the status of our studies, and to solicit your input on the siting process and corridor alternatives. Construction is anticipated to take approximately two years. Under the current schedule, Clean Line is proposing the project to be in service by the end of 2016.

The Grain Belt Express Clean Line, as currently proposed, will begin near the Spearville substation in Ford County, Kansas and end in southeastern Missouri near the St. Francois substation in St. Francois County, Missouri.

Proposed project facilities include a converter station and possibly ground beds at each terminus, two sets of bundled wire conductors per HVDC circuit, shield wire, and conductor support structures. Clean Line is proposing steel structures ranging in height from 120 to 150 feet that are spaced



approximately 800 to 1,200 feet apart. The design and dimensions may vary based on terrain and other engineering considerations.

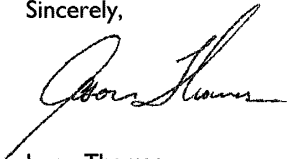
Please reply with your comments in writing and/or by email at your earliest convenience to:

Stephen Parker, Project Manager
The Louis Berger Group, Inc.
4050 Pennsylvania Avenue, Suite 121
Kansas City, MO 64111
sparker@louisberger.com

Although the route for the project has not been identified, the attached Overview Maps shows the entire project siting study area. We have also included a list of counties within the study area boundary. Upon request, the Louis Berger team can provide you with the electronic GIS boundary for the study area. Any additional comments or concerns you have that would assist us in siting the project would be greatly appreciated.

Thank you in advance for your assistance and please do not hesitate to contact Mr. Parker or me if you need additional information.

Sincerely,



Jason Thomas
Director, Environment
Clean Line Energy Partners
cell 713-805-6840
tel 832-319-6357
jthomas@cleanlineenergy.com



Stephen Parker
Senior Scientist
The Louis Berger Group, Inc.
cell 816-674-1110
tel 816-398-8658
sparker@louisberger.com

Attachments:

- I. Project Overview Maps
- II. List of Counties within the Study Area

Cc: Mark Lawlor, Clean Line Energy Partners
Diana Coggin, Clean Line Energy Partners

Missouri Counties within Study Area			
Clay	Cooper	Johnson	Polk
Audrain	Crawford	Laclede	Pulaski
Barton	Dade	Lafayette	Randolph
Bates	Dallas	Lawrence	Ray
Benton	Dent	Livingston	Reynolds
Boone	Douglas	Madison	Saline
Buchanan	Franklin	Maries	Shannon
Caldwell	Gasconade	Miller	St. Charles
Callaway	Greene	Moniteau	St. Clair
Camden	Henry	Montgomery	St. Francois
Carroll	Hickory	Morgan	Ste. Genevieve
Cass	Howard	Newton	Texas
Cedar	Howell	Osage	Vernon
Chariton	Iron	Perry	Warren
Christian	Jackson	Pettis	Washington
Clinton	Jasper	Phelps	Webster
Cole	Jefferson	Platte	Wright



July 8, 2013

U.S. Army Corps of Engineers – St. Louis District
Attn: Ms. Jennifer Brown
1222 Spruce St.
St. Louis, MO 63103

Re: Clean Line Energy's Grain Belt Express Transmission Project - Mississippi River Potential Crossings

Dear Ms. Brown,

Clean Line Energy Partners LLC (Clean Line) is proposing to develop, construct, and operate the Grain Belt Express Clean Line Transmission Project (Project). Clean Line is a privately-owned company focused on developing high voltage direct current (HVDC) transmission lines that would connect the best renewable energy resource regions to communities and cities that have limited access to renewable energy. The proposed Project will be capable of moving up to 3,500 megawatts (MW) of renewable energy from the wind-rich region of southwestern Kansas to southeastern Missouri and markets farther east.

The Louis Berger Group, Inc. (Berger) developed a potential route network for the proposed Project from the Spearville Substation in Ford County, Kansas to the Sullivan Substation in Sullivan County, Indiana. Potential routes have been developed through a process that has taken into account data analysis and field reconnaissance. In mid-July, Clean Line and Berger will be presenting these Potential Routes to the public at 12 Open Houses that will be held throughout the state of Missouri. At this time, there are 5 potential routes to cross the Mississippi River.

On June 26, 2013, Berger and Clean Line held an online meeting with the U.S. Army Corps of Engineers St. Louis District to discuss the project and give an update on the current activities. In response to that meeting, Berger is submitting this letter along with maps of each crossing and shape files. We are requesting a preliminary review of each of the crossings by the Corps to help identify any information that will be helpful in further refining the crossings. Below is a brief summary of each of the potential routes.

Marion County (MO)/Adams County (IL) – River Mile Marker 313-314 (Figures 1 and 1a)

The potential route in Marion and Adams counties is the northern most crossing of the Mississippi River. The width of the river is approximately 7,000 feet (ft.) but, could be spanned with a structure on an island. The route would cross over the South River Drainage District in Marion County and the Sny Island Levee and Drainage District in Adams County. Land adjacent to the river is flat with marginal relief.

Ralls County (MO)/Pike County (IL) – River Mile Marker 303-304 (Figures 2 and 2a)

The potential route would cross at one of the more narrow points along the river. The width of the river is approximately 4,500 ft. The topography is hilly to steep on the Missouri side becoming flat, cultivated land on the Illinois side of the river. The potential route would cross the Sny Island Levee and Drainage District in Pike County.



Ralls County (MO)/Pike County (IL) – River Mile Marker 299-300 (Figures 3 and 3a)

The potential route crosses the Mississippi River near mile marker 300, just north of the Edward Anderson Conservation Area. The width of the river is approximately 4,000 ft. Land adjacent to the river is flat with marginal relief on the Illinois side. In Missouri, land is hilly too steep with forest cover.

Pike County (MO)/Pike County (IL) – River Mile Marker 284-285 (Figures 4 and 4a)

The potential route parallels an existing natural gas line right-of-way crossing the Mississippi River. Topography on the Missouri side is hilly to step with residential development to the north and south. On the Illinois side, land adjacent to the river is flat, cultivated land. The width of the river is about 3,800 ft. South of the crossing is the town of Louisiana and the Upper Mississippi Conservation Area – Angle Island is located to the north. In addition, there are several gas lines passing through the area.

Pike County (MO)/Pike County (IL) – River Mile Marker 276-277 (Figures 5 and 5a)

The potential route parallels an existing transmission line before diverting around a substation to cross over the Mississippi River on the Missouri side. The width of the river is approximately 9,800 ft. Crossing the river at this location would likely involve a structure on the island that is part of the Upper Mississippi Conservation Area. The potential route would cross over the Sny Island Levee and Drainage District and the Mark Twain National Wildlife Refuge, a private – inholding.

At this time, the proposed route has not been identified. Clean Line and Berger are requesting input from the Army Corps of Engineer on the five potential crossings described above. We would like to set up a meeting with you in the next few weeks to review the crossings and get your feedback. Please let me know if you have additional questions or would like additional information on these potential river crossings.

Sincerely,

Tim Gaul
Louis Berger Group
Associate Vice President, Energy Services
Office: 202.303.2647
Mobile: 240.381.8054

Comments for the Louis Berger Group, Inc. for Grain Belt Express Transmission Project –

Mississippi River Potential Crossings (USACE St. Louis District)

General comments:

- USACE policy requires mitigation for loss of public lands for non recreational outgrants. This is in addition to Regulatory requirements that may involve mitigation for wetlands. Non-recreational outgrant mitigation is typically “acre for acre” land acquisition based on the proposed footprint.
- Are there benefits to locating the lines within existing transmission line corridors spanning the river?
- Strongly recommend that project not be located on public lands.
- High public recreational use in Pool 24, including boating, kayaking, fishing, wildlife viewing, etc. Proposed locations fall within primitive camping locations, Mississippi River Water Trail designated sites.
- Review /approvals from navigation industry, including US Coast Guard, US Army Corps of Engineers, RIAC, etc.
- Coordination with Sny Levee and Drainage District.

Figure 3a: Ralls County / Pike County (IL) - RM 299-300:

- Preferred Site.
- Not located on public land.
- Recommend to coordinate with Missouri Department of Conservation

Figure 4a: Pike County (MO) / Pike County (IL) - RM 284-285:

- USACE land ownership on IL side not shown on Figure 4.
- Discourage location due to impacts to public lands, which has negative effects to forestry, wildlife, migratory waterfowl, fisheries, recreation, general aesthetic, etc.
- Blackburn Island is part of Ted Shanks Conservation Area (TSCA). TSCA is currently undergoing a large scale environmental restoration project to restore forests and wetlands. Over 3000 acres of forest have been lost due to flooding of 1993. Following the prolonged Mississippi River flood in 1993, much of the bottomland hardwood and floodplain forest at TSCA died and reed canary grass invaded these areas. Further impacts to forested areas in this stretch of Mississippi River are discouraged.
- Encompasses a known nesting area for eagles, herons, and egrets.
- Blackburn Island area contains 4 permanent research plots as part of Long Term Monitoring Program in order to maintain forest diversity, health, and sustainability on Federal lands. Goals set forth in Upper Mississippi River Systemic Forest Stewardship Plan.
- Anticipate larger impact as compared to natural gas pipelines as they do not necessarily require permanent vegetation clearing footprint.
- **Natural Resource Management Goals and Objectives for Blackburn Island area:**
 - o Restore natural riparian forests and wetland communities through natural succession, restoration plantings, silviculture techniques, succession control and native plant introductions.
 - o Sustain healthy forests and wetlands communities through vegetative management to provide high quality habitat for forest wildlife.
 - o Accommodate resource compatible public access for recreational opportunities (i.e. hunting, fishing, and wildlife viewing).
 - o Communicate regularly and collaborate with MDC on resource compatible natural resource management goals and objectives of the Upper Mississippi Conservation Area.

- Prescribe forest management techniques which support federal management goals and objectives for wildlife and fish management.
- Accommodate resource compatible public access for recreational opportunities (i.e. hunting and water trail access).

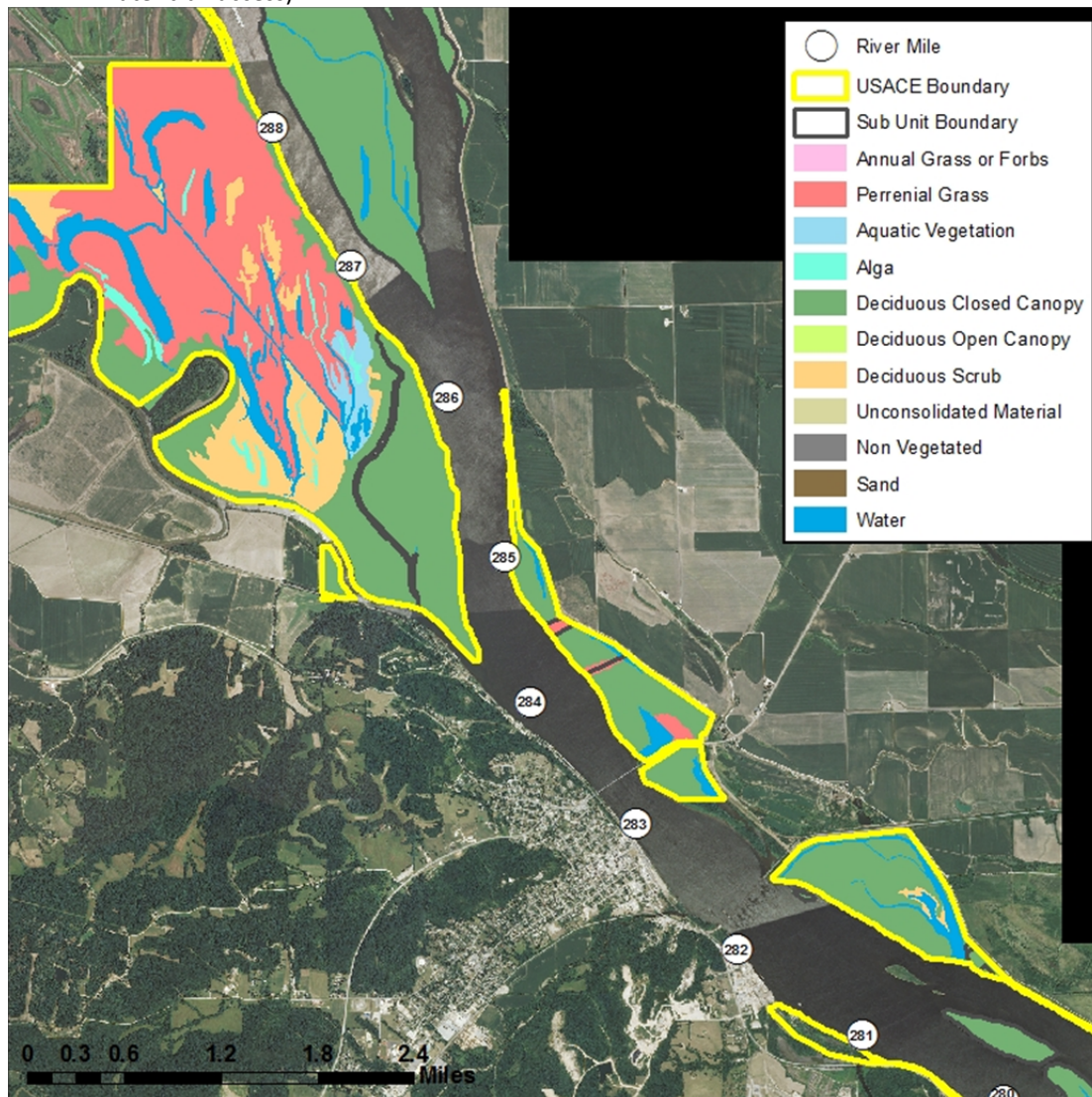


Figure 5a: Pike County (MO) / Pike County (IL) - RM 276-277:

- USACE public land ownership on both Illinois and Missouri sides of the river are not shown on Figure 4a.
- Discourage location due to impacts to public lands, which has negative effects to forestry, wildlife, migratory waterfowl, fisheries, recreation, general aesthetic, etc.
- Encompasses a known nesting area for eagles, herons, and egrets.
- Pharrs Island Conservation Area consists of a mixture of a natural riparian bottomland forest, which is composed of silver maple, green ash, and cottonwood, and herbaceous wetland communities. Suitable habitat exists in this sub unit for bald eagle and Indiana bat resting, roosting and/or nesting.

- Hunting regulations in this area are managed in accordance with MDC statewide regulations and MDC Upper Mississippi Conservation Area regulations. The island also has 15-20 hunting blind sites.
- The Pharrs Island Conservation Area includes a large scale environmental restoration project that was completed in 1992. Existing infrastructure includes a bullnose rock dike 6,750-foot long with a crown elevation (453 NGVD) which is 4 feet above normal pool that was constructed with Grade A stone. Six fish attractors were placed inside the Island complex and held in place with 1500 lb. concrete anchors.
- Pharrs Island contains 2 permanent research plots as part of Long Term Monitoring Program in order to maintain forest diversity, health, and sustainability on Federal lands. Goals set forth in Upper Mississippi River Systemic Forest Stewardship Plan.
- Natural Resource Management Goals and Objectives.
 - o Restore natural riparian forests and wetland communities through natural succession, restoration plantings, silviculture techniques, succession control and native plant introductions.
 - o Sustain healthy forests and wetlands communities through vegetative management to provide high quality habitat for forest wildlife.
 - o Accommodate resource compatible public access for recreational opportunities (i.e. hunting, fishing, and wildlife viewing).
 - o Prescribe forest management techniques which support federal management goals and objectives for wildlife and fish management.



February 9, 2011

Elaine Edwards
U.S. Army Corps of Engineers
Regulatory Division
700 W. Capital
Little Rock, AR 72203

Re: Clean Line Energy Partners' Proposed Grain Belt Clean Line Transmission Project

Dear Ms. Edwards:

Clean Line Energy Partners LLC (Clean Line) is seeking your input on our proposed project to develop, construct and operate the Grain Belt Express Clean Line transmission project ("project"). Clean Line is a privately-owned company focused on developing high voltage direct current (HVDC) transmission lines that would connect the best renewable energy resource regions to communities and cities that have limited access to renewable energy. The proposed project will be capable of moving up to 3,500 megawatts (MW) of renewable energy from the wind-rich region of southwestern Kansas to southeastern Missouri and markets farther east.

Clean Line has retained The Louis Berger Group, Inc. (Berger) to conduct a siting study for the proposed project. We would like to request your comments in the form of an agency coordination letter. The development and environmental permitting process for this project will be a multi-year process, and we are still in a relatively early phase. This coordination will be the first of many opportunities for agencies to participate in the review of this project because Clean Line will need to obtain federal, state, and local permits from the appropriate agencies. A member of our project team will be contacting you in the next few weeks to schedule a follow-up meeting for a more interactive discussion of the project, to present the status of our studies, and to solicit your input on the siting process and corridor alternatives. Construction is anticipated to take approximately two years. Under the current schedule, Clean Line is proposing the project to be in service by the end of 2016.

The Grain Belt Express Clean Line, as currently proposed, will begin near the Spearville substation in Ford County, Kansas and end in southeastern Missouri near the St. Francois substation in St. Francois County, Missouri.

Proposed project facilities include a converter station and possibly ground beds at each terminus, two sets of bundled wire conductors per HVDC circuit, shield wire, and conductor support structures. Clean Line is proposing steel structures ranging in height from 120 to 150 feet that are spaced



approximately 800 to 1,200 feet apart. The design and dimensions may vary based on terrain and other engineering considerations.

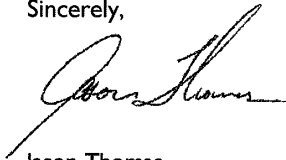
Please reply with your comments in writing and/or by email at your earliest convenience to:

Stephen Parker, Project Manager
The Louis Berger Group, Inc.
4050 Pennsylvania Avenue, Suite 121
Kansas City, MO 64111
sparker@louisberger.com

Although the route for the project has not been identified, the attached Overview Maps shows the entire project siting study area. We have also included a list of counties within the study area boundary. Upon request, the Louis Berger team can provide you with the electronic GIS boundary for the study area. Any additional comments or concerns you have that would assist us in siting the project would be greatly appreciated.

Thank you in advance for your assistance and please do not hesitate to contact Mr. Parker or me if you need additional information.

Sincerely,



Jason Thomas
Director, Environment
Clean Line Energy Partners
cell 713-805-6840
tel 832-319-6357
jthomas@cleanlineenergy.com



Stephen Parker
Senior Scientist
The Louis Berger Group, Inc.
cell 816-674-1110
tel 816-398-8658
sparker@louisberger.com

Attachments:

- I. Project Overview Maps
- II. List of Counties within the Study Area

Cc: Mark Lawlor, Clean Line Energy Partners
Diana Coggin, Clean Line Energy Partners

Missouri Counties within Study Area			
Clay	Cooper	Johnson	Polk
Audrain	Crawford	Laclede	Pulaski
Barton	Dade	Lafayette	Randolph
Bates	Dallas	Lawrence	Ray
Benton	Dent	Livingston	Reynolds
Boone	Douglas	Madison	Saline
Buchanan	Franklin	Maries	Shannon
Caldwell	Gasconade	Miller	St. Charles
Callaway	Greene	Moniteau	St. Clair
Camden	Henry	Montgomery	St. Francois
Carroll	Hickory	Morgan	Ste. Genevieve
Cass	Howard	Newton	Texas
Cedar	Howell	Osage	Vernon
Chariton	Iron	Perry	Warren
Christian	Jackson	Pettis	Washington
Clinton	Jasper	Phelps	Webster
Cole	Jefferson	Platte	Wright



REPLY TO
ATTENTION OF

DEPARTMENT OF THE ARMY
LITTLE ROCK DISTRICT, CORPS OF ENGINEERS
POST OFFICE BOX 867
LITTLE ROCK, ARKANSAS 72203-0867
www.swl.usace.army.mil/

February 25, 2011

Regulatory Division

Mr. Stephen Parker
The Louis Berger Group, Inc.
4050 Pennsylvania Avenue, Suite 121
Kansas City, Missouri 64111

SUBJECT: Permit Application No. **2011-00151**

Dear Mr. Parker:

Please refer to your letter dated February 9, 2011, on behalf of Clean Line Energy Partners, concerning the proposed Grain Belt Express Clean Line Transmission Project, in Kansas and Missouri. Your request has been assigned File No. **2011-00151**.

Mrs. Cynthia Blansett and Mrs. Sarah Chitwood have been assigned as the regulatory project managers for your request in the Little Rock District and will be evaluating it as expeditiously as possible. However, because of our permit workload, it will take a while for us to respond. You may be contacted for additional information about your request.

If you have any questions about the evaluation of your request, please contact the project manager listed below and refer to your assigned file number. Please note that it is unlawful to start work without a Department of the Army permit if one is required.

Cynthia W. Blansett
Sarah L. Chitwood
US Army Corps of Engineers
Little Rock District
ATTN: Regulatory Division
PO Box 867
Little Rock, Arkansas 72203-0867

PHONE: (501) 324-5295 FAX: (501) 324-6013

EMAIL: Cynthia.W.Blansett@usace.army.mil or Sarah.L.Usdrowski@usace.army.mil



March 23, 2012

Wayne Hannel, Regulatory Project Manager
U.S. Army Corps of Engineers
Rock Island District
Clock Tower Building
P.O. Box 2004
Springfield, Illinois 61204

Re: Proposed Grain Belt Express Clean Line Transmission Project

Dear Mr. Hannel:

Clean Line Energy Partners LLC (Clean Line) is actively developing and planning construction of a +/- 600 kV high-voltage direct current (HVDC) transmission line project known as the Grain Belt Express Clean Line (Project). The proposed Project is designed to move up to 3,500 megawatts (MW) of wind-generated electricity from the wind-rich region of southwestern Kansas to Missouri, Illinois, Indiana and markets farther east. The currently proposed Project will begin near the Spearville substation in Ford County, Kansas, and end in western Indiana near the Sullivan substation in Sullivan County, Indiana. The estimated length of the transmission line is roughly 700 miles.

Clean Line has retained the services of The Louis Berger Group, Inc. (Berger) to conduct a siting study for the proposed Project. The Project is in a relatively early planning phase, and potential routes are still in development. Project development and environmental permitting will be a multi-year process, and Clean Line anticipates the need to obtain federal, state, and local permits from the appropriate agencies. Attached are a list of counties within the study area and an overview map.

We respectfully would like to request a meeting with you to introduce the Project and give you an opportunity to comment and provide input. A member of the Berger staff will contact you soon to schedule a meeting and provide an overview of the proposed Project scope and schedule.

If you require further information or have questions regarding this matter, please feel free to contact Todd McCabe at mmccabe@louisberger.com or 816-398-8657. We look forward to working with you throughout the route development and permitting process.



For general project information, please visit the project website at www.grainbeltexpresscleanline.com or www.cleanlineenergy.com.

Sincerely,

A handwritten signature in black ink, appearing to read "Jason Thomas", is written over a horizontal line.

Jason Thomas
Director, Environment
Clean Line Energy Partners
cell 713-805-6840
tel 832-319-6357
jthomas@cleanlineenergy.com

Attachments:

I. Project Overview Map

Cc: Mark Lawlor, Clean Line Energy Partners
Diana Coggin, Clean Line Energy Partners
Greg McKay, USACE Louisville District
Todd McCabe, The Louis Berger Group

Illinois Counties within the Study Area				
Adams	Christian	Clark	Clay	Clinton
Crawford	Cumberland	Jasper	Jefferson	Lawrence
Marion	Monroe	Montgomery	Morgan	Pike
Randolph	Richland	Sangamon	Scott	Shelby
	St. Clair	Washington	Wayne	



July 8, 2013

U.S. Army Corps of Engineers – Rock Island District
Attn: Ms. Donna M. Jones, Regulatory Branch
Clock Tower Building
P.O. Box 2004
Rock Island, IL 61204-2004

Re: Clean Line Energy's Grain Belt Express Transmission Project - Mississippi River Potential Crossings

Dear Ms. Jones,

Clean Line Energy Partners LLC (Clean Line) is proposing to develop, construct, and operate the Grain Belt Express Clean Line Transmission Project (Project). Clean Line is a privately-owned company focused on developing high voltage direct current (HVDC) transmission lines that would connect the best renewable energy resource regions to communities and cities that have limited access to renewable energy. The proposed Project will be capable of moving up to 3,500 megawatts (MW) of renewable energy from the wind-rich region of southwestern Kansas to southeastern Missouri and markets farther east.

The Louis Berger Group, Inc. (Berger) developed a potential route network for the proposed Project from the Spearville Substation in Ford County, Kansas to the Sullivan Substation in Sullivan County, Indiana. Potential routes have been developed through a process that has taken into account data analysis and field reconnaissance. In mid-July, Clean Line and Berger will be presenting these Potential Routes to the public at 12 Open Houses that will be held throughout the state of Missouri. At this time, there are 5 potential routes to cross the Mississippi River.

On June 25, 2013, Berger and Clean Line held an online meeting with the U.S. Army Corps of Engineers Rock Island District to discuss the project and give an update on the current activities. In response to that meeting, Berger is submitting this letter along with maps of each crossing and shape files. We are requesting a preliminary review of each of the crossings by the Corps to help identify any information that will be helpful in further refining the crossings. Below is a brief summary of each of the potential routes.

Marion County (MO)/Adams County (IL) – River Mile Marker 313-314 (Figures 1 and 1a)

The potential route in Marion and Adams counties is the northern most crossing of the Mississippi River. The width of the river is approximately 7,000 feet (ft.) but, could be spanned with a structure on an island. The route would cross over the South River Drainage District in Marion County and the Sny Island Levee and Drainage District in Adams County. Land adjacent to the river is flat with marginal relief.

Ralls County (MO)/Pike County (IL) – River Mile Marker 303-304 (Figures 2 and 2a)

The potential route would cross at one of the more narrow points along the river. The width of the river is approximately 4,500 ft. The topography is hilly to steep on the Missouri side



becoming flat, cultivated land on the Illinois side of the river. The potential route would cross the Sny Island Levee and Drainage District in Pike County.

Ralls County (MO)/Pike County (IL) – River Mile Marker 299-300 (Figures 3 and 3a)

The potential route crosses the Mississippi River near mile marker 300, just north of the Edward Anderson Conservation Area. The width of the river is approximately 4,000 ft. Land adjacent to the river is flat with marginal relief on the Illinois side. In Missouri, land is hilly too steep with forest cover.

Pike County (MO)/Pike County (IL) – River Mile Marker 284-285 (Figures 4 and 4a)

The potential route parallels an existing natural gas line right-of-way crossing the Mississippi River. Topography on the Missouri side is hilly to step with residential development to the north and south. On the Illinois side, land adjacent to the river is flat, cultivated land. The width of the river is about 3,800 ft. South of the crossing is the town of Louisiana and the Upper Mississippi Conservation Area – Angle Island is located to the north. In addition, there are several gas lines passing through the area.

Pike County (MO)/Pike County (IL) – River Mile Marker 276-277 (Figures 5 and 5a)

The potential route parallels an existing transmission line before diverting around a substation to cross over the Mississippi River on the Missouri side. The width of the river is approximately 9,800 ft. Crossing the river at this location would likely involve a structure on the island that is part of the Upper Mississippi Conservation Area. The potential route would cross over the Sny Island Levee and Drainage District and the Mark Twain National Wildlife Refuge, a private – inholding.

At this time, the proposed route has not been identified. Clean Line and Berger are requesting input from the Army Corps of Engineer on the five potential crossings described above. We would like to set up a meeting with you in the next few weeks to review the crossings and get your feedback. Please let me know if you have additional questions or would like additional information on these potential river crossings.

Sincerely,

Tim Gaul
Louis Berger Group
Associate Vice President, Energy Services
Office: 202.303.2647
Mobile: 240.381.8054

McCabe, Michael

From: Jones, Donna M MVR <Donna.M.Jones@usace.army.mil>
Sent: Friday, August 02, 2013 3:50 PM
To: McCabe, Michael
Cc: Hannel, Wayne MVR; Taylor, Freddie L MVR; Lundh, Joseph S MVR; Swenson, Gary V MVR; St. Louis, Paul F MVR; Jones, Sarah B MVR; Manar, Katy MVS; Brown, Jennifer MVS
Subject: Grain Belt Clean Line (UNCLASSIFIED)
Attachments: RE: Grain Belt Express - Mississippi River Crossings 2 of 3 (UNCLASSIFIED); RE: Transmission line crossing - Grain Belt Clean Line Project 1 of 3 (UNCLASSIFIED)

Classification: UNCLASSIFIED

Caveats: NONE

Mike

Here are the comments for your proposed crossing alignments within our District.

It appears there may be some land use designation conflicts for the crossings at river miles 303 and 313.

Please take these comments into consideration as you continue to evaluate your river crossing alternatives.

Also, please remember we will also have to get a clearance from the Emergency Management folks.

They are going to have to approve the clearances of the line and structures above/around the levee.

The other river crossings are within the St. Louis District's river jurisdiction.

They should be providing you comments for the other crossing alternatives under consideration.

Let me know if there are additional questions regarding our comments.

Donna M. Jones, P.E.
Chief, Enforcement Section
Regulatory Branch
Rock Island District Corps of Engineers
309/794-5371

In order to assist us in improving our service to you, please complete the survey found at

<http://per2.nwp.usace.army.mil/survey.html>

Classification: UNCLASSIFIED

Caveats: NONE

McCabe, Michael

From: Lundh, Joseph S MVR <Joseph.S.Lundh@usace.army.mil>
Sent: Friday, August 02, 2013 2:01 PM
To: Jones, Donna M MVR
Cc: Swenson, Gary V MVR; Nelson, Jeffrey E MVR; Knoble, John F MVR
Subject: RE: Grain Belt Express - Mississippi River Crossings 2 of 3 (UNCLASSIFIED)

Classification: UNCLASSIFIED

Caveats: NONE

Donna-

The proposed crossing at river mile 313 crosses federal fee title acquired for the Corps of Engineers 9 foot channel project. This includes the majority of the lands and islands on the Illinois side of the channel west of the levee. These federal lands are leased to the Fish and Wildlife Service (FWS) for management whom have in turn leased the lands to the State of Illinois. Both agencies should be contacted for any continued consideration of this crossing. It also appears to cross tract IIs-16 in Pool 22 which is designated as a Natural Area according to our Land Use Allocation Plan. Constructing a power line crossing on this tract may be incongruent with its designated use and should be further reviewed by District staff. Timber rights are maintained by the Corps on these lands and clearing would require compensation/mitigation. Further consideration should include coordination with District staff on cultural resource and environmental compliance.

The proposed crossing at river mile 303 also crosses federal (Corps) fee title. Some of these lands are again leased to the FWS and third party leased to Illinois. The land use designation is Wildlife Management/Reserve Forest. Both agencies should also be contacted for any continued consideration of this crossing. Timber rights are maintained by the Corps on these lands and clearing would require compensation/mitigation. Further consideration should include coordination with District staff on cultural resource and environmental compliance.

The proposed crossing at river mile 300 does not appear to cross federal fee title. I will defer to the St Louis District for further comments on this and the other two crossings.

Thanks for the opportunity to comment.

Joseph Lundh
Supervisory Natural Resource Specialist
US Army Corps of Engineers
Mississippi River Project
PO Box 534
Pleasant Valley, IA 52767
309-794-4528
Joseph.s.lundh@usace.army.mil

-----Original Message-----

From: Jones, Donna M MVR
Sent: Friday, July 12, 2013 10:50 AM
To: Swenson, Gary V MVR; Lundh, Joseph S MVR; Fiscus, Timothy A MVR; Jones, Sarah B MVR; St. Louis, Paul F MVR
Cc: Hannel, Wayne MVR
Subject: FW: Grain Belt Express - Mississippi River Crossings 2 of 3 (UNCLASSIFIED)

Classification: UNCLASSIFIED

Caveats: NONE

Donna M. Jones, P.E.
Chief, Enforcement Section
Regulatory Branch
Rock Island District Corps of Engineers
309/794-5371

In order to assist us in improving our service to you, please complete the survey found at <http://per2.nwp.usace.army.mil/survey.html>

-----Original Message-----

From: McCabe, Michael [mailto:mmccabe@louisberger.com]
Sent: Monday, July 08, 2013 2:17 PM
To: Jones, Donna M MVR
Subject: RE: Grain Belt Express - Mississippi River Crossings

See attached aerial maps.

From: McCabe, Michael
Sent: Monday, July 08, 2013 2:15 PM
To: donna.m.jones@usace.army.mil
Subject: Grain Belt Express - Mississippi River Crossings

Ms. Jones,

A copy of the attached letter and aerial and topographic maps were mailed to you today. I've also attached a shape file of the proposed river crossing locations in coordinate system North American Equidistant Conic.

Copies of the aerial and topographic maps will be sent in separate emails.

If you have any questions, please let me know.

Todd McCabe

Environmental Scientist

(816) 398-8657

Classification: UNCLASSIFIED

Caveats: NONE

Classification: UNCLASSIFIED

Caveats: NONE

McCabe, Michael

From: Taylor, Freddie L MVR <Freddie.L.Taylor@usace.army.mil>
Sent: Monday, July 22, 2013 2:15 PM
To: Lundh, Joseph S MVR; Jones, Donna M MVR
Cc: Deutsch, Charlie MVS; VanOpdorp, Debra J MVR
Subject: RE: Transmission line crossing - Grain Belt Clean Line Project 1 of 3 (UNCLASSIFIED)

Classification: UNCLASSIFIED

Caveats: NONE

Donna,

CEMVR-RE-M has reviewed the river crossings for the subject project, and we concur with Joe Lundh's statement below that three of the crossings (Figures 3, 4, and 5) are located within the St. Louis District.

However, both Figures 1 (RM 313-314) and 2 (RM 303-304) are located within the Rock Island District; and both crossings include Federal land on both the Missouri and Illinois shorelines. Both crossings also traverse an island, which are federally-owned as well. Utilization of either of these sites would require future real estate coordination and eventual issuance of Federal authorization.

Please let me know if you have any additional questions regarding this matter.

V/R,
Freddie L. Taylor
Realty Specialist, Management and Disposal Section MVD Regional Real Estate Division North U.S. Army Corps of Engineers Clock Tower Building P.O. Box 2004 Rock Island, Illinois 61204-2004

-----Original Message-----

From: Lundh, Joseph S MVR
Sent: Wednesday, July 17, 2013 1:55 PM
To: Jones, Donna M MVR; Taylor, Freddie L MVR
Cc: Deutsch, Charlie MVS; VanOpdorp, Debra J MVR
Subject: FW: Transmission line crossing - Grain Belt Clean Line Project 1 of 3 (UNCLASSIFIED)

Classification: UNCLASSIFIED

Caveats: NONE

Donna-

I will send you some comments on these alternate crossings for this utility. Though three of the potential crossings are in the St Louis District. As such, I've included Charlie Deutsch with the River's Project Office.

Freddie-

Likely Tim forwarded you a copy of the email...so sorry for the duplicate. The potential crossing at RM 303 goes over an island that they don't list as federal land. It appears to me that it may be federal land as we own the Illinois shoreline and it accreted to Pool 22 IIS-2 which we acquired. We may be interested in some further digging if that is the one that gets selected.

Thanks,

Joseph Lundh
Supervisory Natural Resource Specialist
US Army Corps of Engineers
Mississippi River Project
PO Box 534
Pleasant Valley, IA 52767
309-794-4528
Joseph.s.lundh@usace.army.mil

-----Original Message-----

From: Jones, Donna M MVR
Sent: Friday, July 12, 2013 10:48 AM
To: Swenson, Gary V MVR; Lundh, Joseph S MVR; Fiscus, Timothy A MVR; Jones, Sarah B MVR; St. Louis, Paul F MVR
Cc: Hannel, Wayne MVR
Subject: Transmission line crossing - Grain Belt Clean Line Project 1 of 3 (UNCLASSIFIED)

Classification: UNCLASSIFIED
Caveats: NONE

I will be forwarding a set of 3 emails from Grain Belt Clean Line.
There is an additional transmission line crossing proposed in the Southern portion of the District over the Mississippi River.
Grain Belt Clean Line has reduced their alternatives to the 5 locations outlined in the emails.
Please provide comments concerning these crossings by COB 22 July

Donna M. Jones, P.E.
Chief, Enforcement Section
Regulatory Branch
Rock Island District Corps of Engineers
309/794-5371

In order to assist us in improving our service to you, please complete the survey found at
<http://per2.nwp.usace.army.mil/survey.html>

Classification: UNCLASSIFIED
Caveats: NONE

Classification: UNCLASSIFIED
Caveats: NONE

Classification: UNCLASSIFIED
Caveats: NONE

FAX

Attention: Allison Smith (832/319-6311)

Missouri NRCS has learned that a HVDC transmission line is planned to traverse Missouri to states east of us and will impact several landowners with USDA-NRCS Wetlands Reserve Program, Emergency Wetland Reserve Program and Emergency Watershed Protection Program permanent and 30 year easements. We have been in contact with two such landowners in Chariton County Missouri. Be aware that USDA-NRCS will not modify the easement and you are advised to "avoid our easements" as per guidance from National Headquarters. I can send you a copy of our Warranty Easement Deed as well as procedures you must take in order for USDA-NRCS to entertain an easement modification.

Kevin Dacey
NRCS Biologist/WRP Coordinator
NRCS State Office
Parkade Center; Ste 250
601 Business Loop 70 West
Columbia, MO 65203

(V) 573/876-9356
(F) 573-876-0913

kevin.dacey@mo.usda.gov

February 10, 2011

David Thorne, Policy Coordinator
Missouri Department of Conservation
Policy Coordination
P.O. Box 180
Jefferson City, MO 65012

Re: Clean Line Energy Partners' Proposed Grain Belt Clean Line Transmission Project

Dear Mr. Thorne:

Clean Line Energy Partners LLC (Clean Line) is seeking your input on our proposed project to develop, construct and operate the Grain Belt Express Clean Line transmission project ("project"). Clean Line is a privately-owned company focused on developing high voltage direct current (HVDC) transmission lines that would connect the best renewable energy resource regions to communities and cities that have limited access to renewable energy. The proposed project will be capable of moving up to 3,500 megawatts (MW) of renewable energy from the wind-rich region of southwestern Kansas to southeastern Missouri and markets farther east.

Clean Line has retained The Louis Berger Group, Inc. (Berger) to conduct a siting study for the proposed project. In accordance with the Missouri Revised Statutes, Chapter 252, Section 252.240 we would like to request your comments on the project's potential to have adverse effects on state threatened or endangered species. The development and environmental permitting process for this project will be a multi-year process, and we are still in a relatively early phase. This coordination will be the first of many opportunities for agencies to participate in the review of this project because Clean Line will need to obtain federal, state, and local permits from the appropriate agencies. A member of our project team will be contacting you in the next few weeks to schedule a follow-up meeting for a more interactive discussion of the project, to present the status of our studies, and to solicit your input on the siting process and corridor alternatives. Construction is anticipated to take approximately two years. Under the current schedule, Clean Line is proposing the project to be in service by the end of 2016.

The Grain Belt Express Clean Line, as currently proposed, will begin near the Spearville substation in Ford County, Kansas and end in southeastern Missouri near the St. Francois substation in St. Francois County, Missouri.

Proposed project facilities include a converter station and possibly ground beds at each terminus, two sets of bundled wire conductors per HVDC circuit, shield wire, and conductor support structures. Clean Line is proposing steel structures ranging in height from 120 to 150 feet that are spaced approximately 800 to 1,200 feet apart. The design and dimensions may vary based on terrain and other engineering considerations.



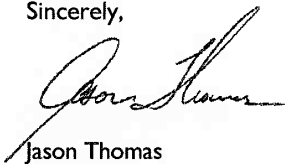
Please reply with your comments in writing and/or by email at your earliest convenience to:

Stephen Parker, Project Manager
The Louis Berger Group, Inc.
4050 Pennsylvania Avenue, Suite 121
Kansas City, MO 64111
sparker@louisberger.com

Although the route for the project has not been identified, the attached Overview Map shows the entire project siting study area. We have also included a list of counties within the study area boundary. Upon request, the Louis Berger team can provide you with the electronic GIS boundary for the study area. Any additional comments or concerns you have that would assist us in siting the project would be greatly appreciated.

Thank you in advance for your assistance and please do not hesitate to contact Mr. Parker or me if you need additional information.

Sincerely,



Jason Thomas
Director, Environment
Clean Line Energy Partners
cell 713-805-6840
tel 832-319-6357
jthomas@cleanlineenergy.com



Stephen Parker
Senior Scientist
The Louis Berger Group, Inc.
cell 816-674-1110
tel 816-398-8658
sparker@louisberger.com

Attachments:

- I. Project Overview Maps
- II. List of Counties within the Study Area

Cc: Mark Lawlor, Clean Line Energy Partners
Diana Coggin, Clean Line Energy Partners

Missouri Counties within Study Area			
Clay	Cooper	Johnson	Polk
Audrain	Crawford	Laclede	Pulaski
Barton	Dade	Lafayette	Randolph
Bates	Dallas	Lawrence	Ray
Benton	Dent	Livingston	Reynolds
Boone	Douglas	Madison	Saline
Buchanan	Franklin	Maries	Shannon
Caldwell	Gasconade	Miller	St. Charles
Callaway	Greene	Moniteau	St. Clair
Camden	Henry	Montgomery	St. Francois
Carroll	Hickory	Morgan	Ste. Genevieve
Cass	Howard	Newton	Texas
Cedar	Howell	Osage	Vernon
Chariton	Iron	Perry	Warren
Christian	Jackson	Pettis	Washington
Clinton	Jasper	Phelps	Webster
Cole	Jefferson	Platte	Wright