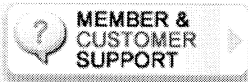
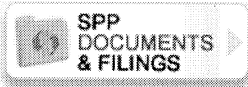
SITESEARCH [About SPP](#) [Org Groups](#) [Regional Entity](#) [Engineering & Planning](#) [Market Info](#) [Training](#) [Contract Services](#)[Home](#) > [Operating Region](#)

Operating Region

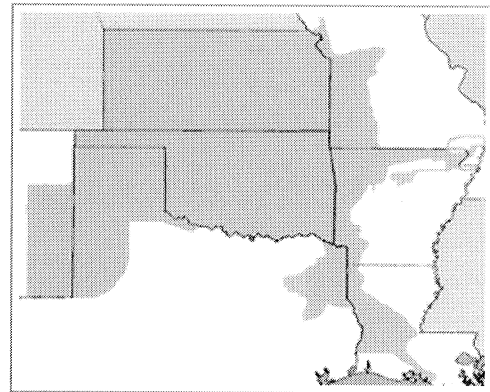
Non-Coincidental Peak Load



SPP Footprints Defined SPP Fast Facts

SPP's Electric Industry

Substations (modeled)	5,026
Transmission Voltage Levels	500, 345, 230, 161, 138, 115, 69KV
Generating Plants	451
2006 System Peak (coincident)	42,227 MW
2006 Demand for Electricity	42,882 MW



2006 Capacity - 45,168 MW

Coal	36%
Gas	36%
Dual Fuel	8%
Hydro	7%
Nuclear	4%
Oil	2%
Other	7%

[Calendar of Events](#) | [Site Map](#) | [Terms and Conditions of Use](#)
©2007 Southwest Power Pool, Inc. All rights reserved.

Schedule RJ-2



Fast Facts

In North America, Southwest Power Pool is one of nine Regional Transmission Organizations/ Independent System Operators, one of eight Regional Entities, and one of eight regional Reliability Councils. SPP is mandated by the Federal Energy Regulatory Commission to ensure reliable supplies of power, adequate transmission infrastructure, and competitive wholesale prices of electricity.

SPP covers a geographic area of 255,000 square miles and has members in eight states: Arkansas, Kansas, Louisiana, Mississippi, Missouri, New Mexico, Oklahoma, and Texas. SPP manages transmission in seven of the above states.

SPP's footprint includes 17 balancing authorities and 52,301 miles of transmission lines.

SPP has 50 members that serve over 4.5 million customers. SPP's membership consists of 12 investor-owned utilities, 8 municipal systems, 11 generation and transmission cooperatives, 2 state authorities, 3 independent power producers, 11 power marketers, 1 contract participant, and 2 independent transmission companies.

Our Mission:

*Helping our members work
together to keep the lights on –
today and in the
future*

Primary Services Provided to Members and Customers:

Tariff Administration: SPP administers the Open Access Transmission Tariff and processes an average of 16,000 requests during the winter and 18,000 during the summer.

Reliability Coordination: SPP monitors power flow throughout our footprint and coordinates regional response in emergency situations or blackouts.

Regional Scheduling: SPP ensures that the amount of power sent is coordinated and matched with power received.

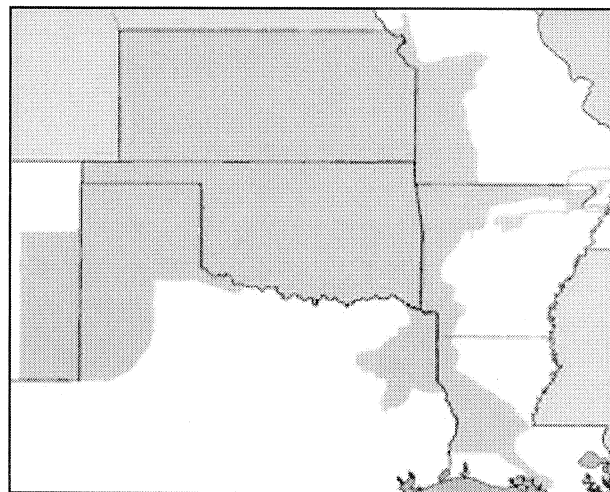
Market Operations: SPP recently implemented an Energy Imbalance Services Market. SPP monitors resource/load balance and ensures that less expensive power is used to serve load before expensive power, as long as system reliability is met.

Transmission Expansion Planning: SPP's planning process seeks to identify system limitations, develop transmission upgrade plans, and track project progress to ensure timely completion of system reinforcements.

Contract Services: SPP provides reliability coordination, tariff administration, and scheduling on a contract basis.

Transmission and Operating Region

Electric Industry Substations (modeled): 5,026	
Transmission Voltage Levels: 500, 345, 230, 161, 138, 115, 69 kV	
Generating Plants: 451	
2006 System Peak (coincident): 42,227 MW	
2006 Total Demand for Electricity: 42,882 MW	
In 2006, 18 transmission projects totaling \$27,800,000 were completed, including terminal upgrades, reconductors, and transformers.	
2006 Electricity Generation Capacity: 45,168 MW	
Coal	36%
Gas	36%
Dual Fuel	8%
Hydro	7%
Nuclear	4%
Oil	2%
Other	7%



Strategic Plan for the Future

Center of Excellence - Establish a Center of Excellence to leverage collective knowledge and provide thought, leadership, and shared service to members.

Communication and Education - Develop a systematic program for communicating with and educating the region's federal and state regulatory and legislative constituencies.

Balancing Authority - Offer Balancing Authority services to SPP members to facilitate ancillary services market development and compliance efforts in the region.

Membership Development - Pursue expansion of SPP membership and geographic footprint to further leverage capabilities and lower costs.

Transmission Expansion and Project Tracking - Actively monitor and support the progress of approved transmission expansion projects.

Economic Upgrades - Continue to identify potential economic upgrades and develop more direct means to decouple ownership and operation.

Market Development and Design - Evaluate a comprehensive market services design for the region.

Contract Services - Continue to offer services on a contract basis to increase revenues, further membership, and enhance the quality of existing services.

Regional Reliability - Become a Regional Entity under the new Electric Reliability Organization to continue offering reliability and transmission services in an efficient and cost-effective manner.

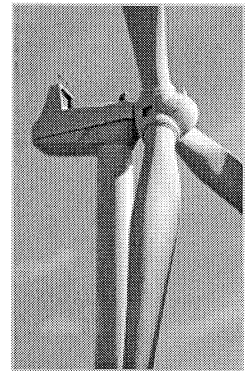


Did You Know?



On a typical monthly residential electric bill of \$100 (10¢/kilowatt hour), SPP's cost represents only 40¢.

A 2005 independent analysis by Charles River Associates estimated a 270% return on investment for SPP Market services alone over the next 10 years.

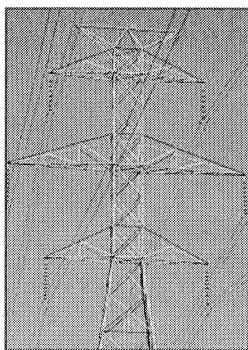


The SPP region added 347 megawatts of renewable generation in 2006.



The SPP region's 2006 electric generation capacity of 45,168 megawatts would power over 36 million homes in moderate weather.

The 52,301 miles of transmission lines in SPP's footprint would circle the earth - twice.



SPP's transmission owners spend almost \$500 million annually to operate their electric transmission facilities.

Between 1998 and 2006, SPP settled \$1.36 billion in transmission revenues.

SPP Footprints



There are five different SPP footprints:

- Regional Reliability Organization / NERC
- Reserve Sharing Group
- RC: Reliability Coordinator Area
- Regional Transmission Organization/Tariff
- EIS Market Region

Below are definitions of SPP's footprints and lists of the members, Balancing Authorities (BAs), Transmission Operators (TOPs), and/or Transmission Owners (TOs) in each footprint.

Regional Reliability Organization / NERC

The RRO is formed under the North American Electric Reliability Council (NERC) for the purposes of ensuring that a defined area of the Bulk Electric System is reliable, adequate and secure.

The SPP RRO footprint is comprised of SPP's members, which includes investor-owned utilities, cooperatives, municipals, power marketers, independent power producers, and governmental agencies.

The RRO footprint is most commonly cited when people ask about the "SPP Footprint."

For a list of SPP members, visit www.spp.org and select Members.

Balancing Authorities in the RRO/NERC Footprint:

SECI	Sunflower Electric
SPS	Southwest Public Service
WFEC	Western Farmers Electric Cooperative
OKGE	Oklahoma Gas & Electric Transmission
CSWS	American Electric Power
EDE	Empire District Electric Co
GRDA	Grand River Dam Authority
KCPL	Kansas City P&L Power Supply
WR	Westar Energy Generation
KACY	Kansas City Board of Public Utilities
MPS	Missouri Public Service Transmission
INDN	Independence P&L
SPA	Southwest Power Administration
CLEC	Central Louisiana Electric
LAFA	City of Lafayette
LEPA	Louisiana Energy & Power Authority

Reserve Sharing Group

The Reserve Sharing Group footprint is currently comprised only of Balancing Authorities. The Reserve Sharing footprint includes all SPP Regional Reliability Organization BAs and certain other BAs who have contracted with SPP to provide them with Reserve Sharing services.

Reserving Sharing Footprint:

AECI	Associated Electric Co-Op
BUBA	City of Benton, Arkansas
CSWS	American Electric Power
CLEC	Central Louisiana Electric
CNWX	Constellation Energy (Conway)
DENL	Constellation Energy (North Little Rock)
DESR	Constellation Energy (Ruston)
WMUC	Constellation Energy (West Memphis)
EDE	Empire District Electric Co
EES	Entergy Generation
GRDA	Grand River Dam Authority
INDN	Independence P&L
KACY	Kansas City Board of Public Utilities
KCPL	Kansas City P&L Power Supply
LAFA	City of Lafayette
LAGN	Louisiana Generating (NRG)
LEPA	Louisiana Energy & Power Authority
MPS	Missouri Public Service Transmission
OKGE	Oklahoma Gas & Electric Transmission
SECI	Sunflower Electric
SME	Southern Mississippi Electric Power Association
SPA	Southwest Power Administration
SPS	Southwest Public Service
WFEC	Western Farmers Electric Coop
WR	Westar Energy Generation

RC: Reliability Coordinator Area

The RC footprint is comprised of those Balancing Authorities and Transmission Operators for which SPP acts as a Reliability Coordinator. RC is a NERC designation.

The SPP RC footprint currently includes all SPP RRO member Balancing Authorities and transmission owners, with the exception of the Aquila BAs and certain BAs in the Southeastern Electric Reliability Council RRO.

Reliability Coordinator Footprint:

BCA	Batesville Generating Station
BUBA	City of Benton, Arkansas
CSWS	Central and South West Services
CNWX	City of Conway
DENL	City of North Little Rock
DERS	City of Ruston
WMUC	City of West Memphis
CLEC	CLECO Power
EDE	The Empire District Electric Company
GRDA	Grand River Dam Authority
INDN	City Power & Light, Independence, Missouri
KACY	The Board of Public Utilities, Kansas City, Kansas
KCPL	Kansas City Power and Light Company
LAFA	City of Lafayette, Louisiana
LEPA	Louisiana Energy & Power Authority
LAGN	Louisiana Generating
OKGE	Oklahoma Gas and Electric
SECI	Sunflower Electric Power Corporation
SPA	Southwestern Power Administration
SPS	Southwestern Public Service Company
PUPP	Union Generating Station
WFEC	Western Farmers Electric Cooperative
WR	Westar Energy, Inc.
MIDW	Midwest Energy – TOP in WR Balancing Authority Area
CUS	City Utilities of Springfield, MO – TOP in SPA Balancing Authority Area

Regional Transmission Organization / Tariff

The RTO/Tariff footprint is comprised of the Balancing Authorities and Transmission Owners who have committed their transmission facilities to the SPP Open Access Transmission Tariff.

RTO/Tariff Footprint:

SECI	Sunflower Electric Power Corporation
SPS	Southwestern Public Service Company
WFEC	Western Farmers Electric Cooperative
OKGE	Oklahoma Gas and Electric
CSWS	Central and South West Services
EDE	The Empire District Electric Company
GRDA	Grand River Dam Authority
KCPL	Kansas City Power and Light Company
WR	Westar Energy, Inc.
MPS	Missouri Public Service Transmission
CUS	City Utilities of Springfield (part of the Southwest Power Administration BA, which is not under the SPP tariff)
MIDW	Midwest Energy (a distinct tariff entity which is part of the Westar Balancing Authority)

EIS Market Region

The Market Region consists of Balancing Authorities and Transmission Owners who participate in the SPP EIS Market. All load and generation connected to the transmission facilities of these transmission owners are subject to terms and conditions of the EIS market.

SPP Market Region Footprint:

SECI	Sunflower Electric Power Corporation
SPS	Southwestern Public Service Company
WFEC	Western Farmers Electric Cooperative
OKGE	Oklahoma Gas and Electric
CSWS	Central and South West Services
EDE	The Empire District Electric Company
GRDA	Grand River Dam Authority
KCPL	Kansas City Power and Light Company
WR	Westar Energy, Inc.
KACY	Kansas City Board of Public Utilities