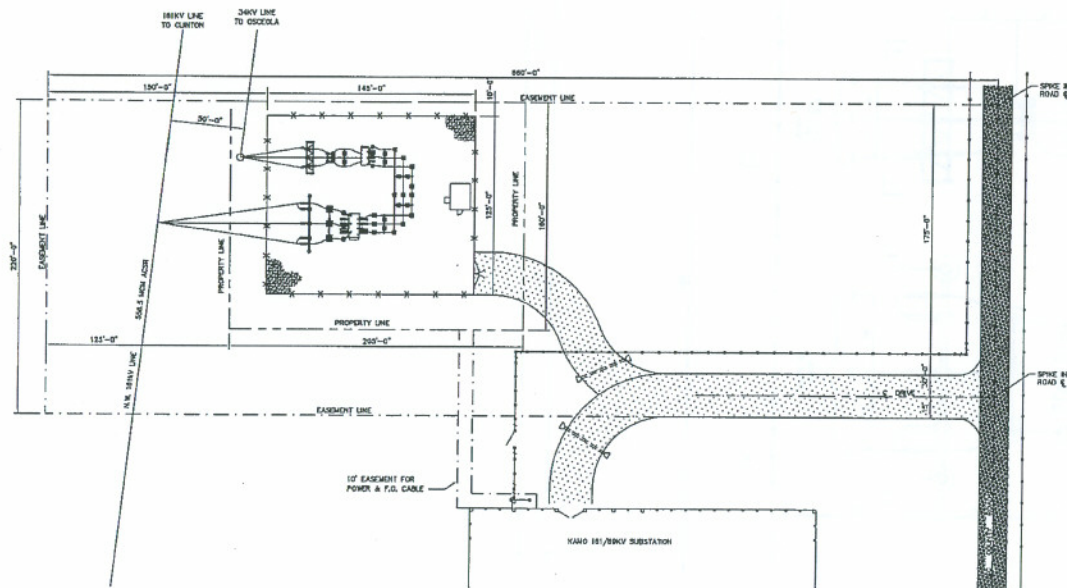


LEGEND

- POWER POLE
- 4\"/>

NO.	DATE	BY	CHKD.	APP'D.
1	10-1-77	J. L. W.	J. L. W.	J. L. W.
2	10-1-77	J. L. W.	J. L. W.	J. L. W.
3	10-1-77	J. L. W.	J. L. W.	J. L. W.
4	10-1-77	J. L. W.	J. L. W.	J. L. W.
5	10-1-77	J. L. W.	J. L. W.	J. L. W.

KAMO ELECTRIC COOPERATIVE, INC.			
ARKANSAS-32-BENTON		VINITA, OKLAHOMA	
OSCEOLA 161KV SUBSTATION			
GRADING PLAN			
AQUILA SUBSTATION SITE LAYOUT			
DATE	DATE BY	DATE	DRAWING NUMBER
	BY	BY	
APRIL 1977	J. L. W.	10-1-77	1905-D-0601



LEGEND:

- NEW 6" LAYER AGGREGATE SURFACE FOR SUBSTATION YARD
- PERMANENT SUBSTATION ACCESS DRIVE AGGREGATE SURFACE
- NEW CHAIN LINK FENCE
- PROPERTY LINE
- EASEMENT

NOTES:

1. ALL DISTURBED AREAS OUTSIDE THE SUBSTATION'S FENCED AREA WILL BE RESEED WITH NATIVE GRASSES TO MINIMIZE RUNOFF AND EROSION UPON COMPLETION OF THE PROJECT.
2. SUBSTATION IS AN UNMANNED FACILITY, WITH AN ESTIMATED SITE ENTRY OF ONE VEHICLE PER WEEK UNDER NORMAL CIRCUMSTANCES. SITE ACCESS IS LIMITED TO AUTHORIZED PERSONNEL ONLY.
3. PARKING LOT SPACE IS NOT REQUIRED FOR THIS INSTALLATION.
4. NO PAVED FACILITIES, CURBS, SIDEWALKS, ETC. PRESENTLY EXIST ON THE PROPERTY. THEREFORE NO NEW OR UPGRADES TO EXISTING FACILITIES ARE PLANNED DURING THE COURSE OF THIS PROJECT.
5. FACILITY REQUIRES NO WATER SUPPLY, SANITARY SEWER, OR GAS CONNECTIONS. ELECTRICAL SUPPLY TO FACILITY WILL BE SUPPLIED FROM ON SITE.

NOT FOR
CONSTRUCTION



REV.	BY	CHK.	DATE	DESCRIPTION

MISSOURI PUBLIC SERVICE
SAVING CITY, MISSOURI 64158

OSCEOLA 161/34KV SUBSTATION
SITE DEVELOPMENT PLAN

PROJ. NO.	809-001
DATE	8/22/06
SCALE	1"=40'
SHEET	0

LEGEND:

- FIXED (WELDED) BUS FITTING
- SLIP (NON-WELDED) BUS FITTING
- SWITCH OPERATOR LOCATION
- BILL OF MATERIAL ITEM NUMBER

REFERENCE DRAWINGS:

809-100 SITE LAYOUT
809-501 ELEVATIONS

NOTES:

1. INSTALL 795 MCM AAC OR ACER CONDUCTOR INSIDE ALL 3" IPS BUS RUNS LONGER THAN 15 FEET FOR VIBRATION DAMPING.

MISSOURI PUBLIC SERVICE		PROJ. NO.	809-001
SAVING CITY, MISSOURI 64158		DATE	8/22/06
OSCEOLA 161/34KV SUBSTATION		SCALE	1"=40'
PLAN VIEW		SHEET	0