

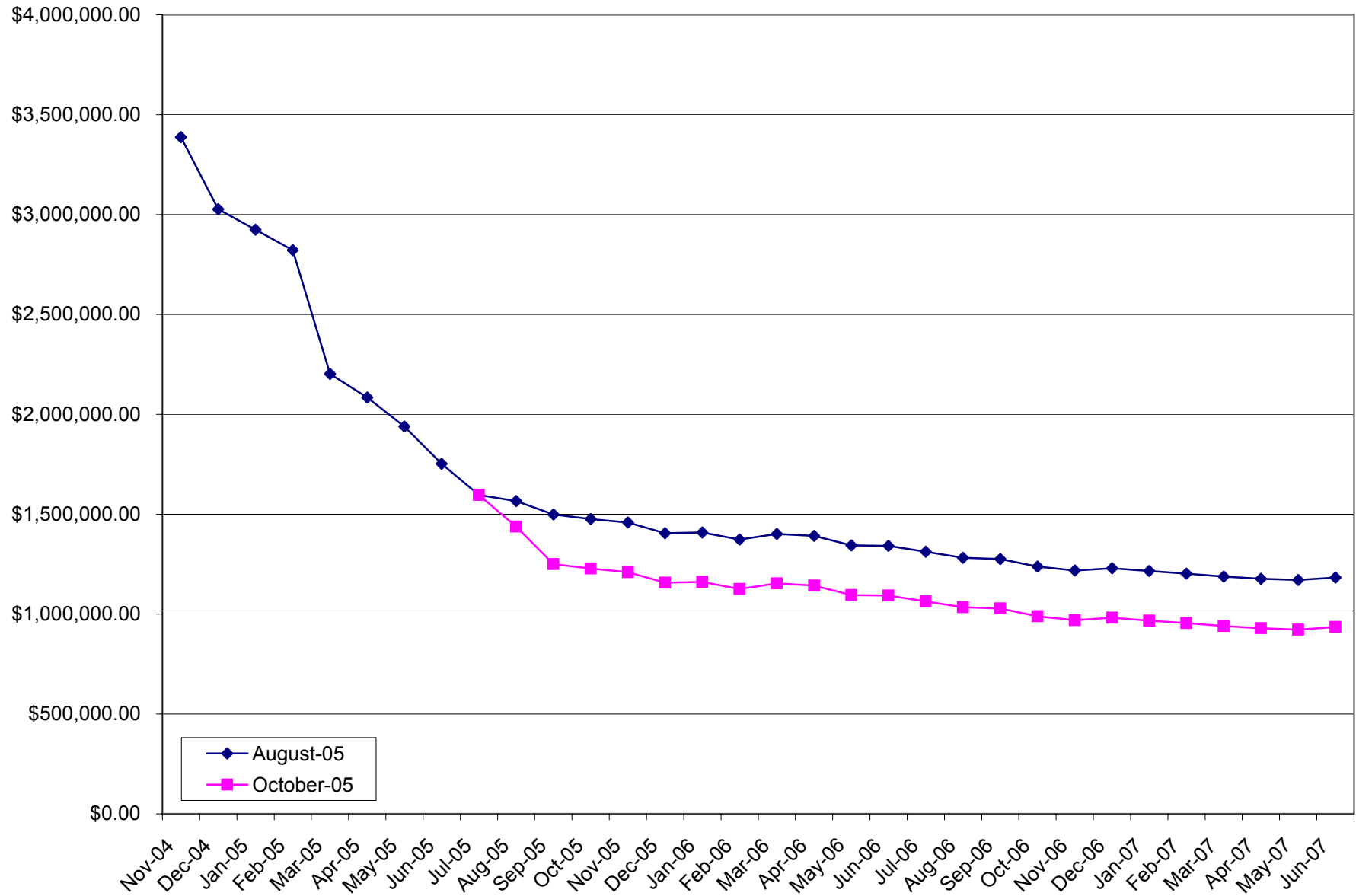
**Projected Fund Balances under \$0.14 Surcharge Imposed in August or October 2005 Assuming Distribution of  
20 Additional CapTel Phones per Month at Various Utilization Rates and Averaged Annual TEDP Appropriation**

Date	CapTel Distribtuion <b>Frozen on</b> <b>June 30:</b> Residual Usage, 153 Minutes		CapTel Distribution: 20 Phones/Month <b>153 Minutes</b> per Month		CapTel Distribution: 20 Phones/Month <b>175 Minutes</b> per Month		CapTel Distribution: 20 Phones/Month <b>200 Minutes</b> per Month	
	August-05	October-05	August-05	October-05	August-05	October-05	August-05	October-05
Nov-04	\$3,388,181.38		\$3,388,181.38		\$3,388,181.38		\$3,388,181.38	
Dec-04	\$3,026,568.36		\$3,026,568.36		\$3,026,568.36		\$3,026,568.36	
Jan-05	\$2,924,514.93		\$2,924,514.93		\$2,924,514.93		\$2,924,514.93	
Feb-05	\$2,821,749.14		\$2,821,749.14		\$2,821,749.14		\$2,821,749.14	
Mar-05	\$2,202,631.04		\$2,202,631.04		\$2,202,631.04		\$2,202,631.04	
Apr-05	\$2,083,735.23		\$2,083,735.23		\$2,083,735.23		\$2,083,735.23	
May-05	\$1,939,278.28		\$1,939,278.28		\$1,931,207.58		\$1,922,036.33	
Jun-05	\$1,752,396.07		\$1,752,396.07		\$1,735,616.67		\$1,716,549.17	
Jul-05	\$1,596,738.91	\$1,596,738.91	\$1,592,301.91	\$1,592,301.91	\$1,566,175.81	\$1,566,175.81	\$1,536,487.06	\$1,536,487.06
Aug-05	\$1,566,379.76	\$1,438,113.58	\$1,553,068.76	\$1,424,802.58	\$1,516,957.96	\$1,388,691.78	\$1,475,922.96	\$1,347,656.78
Sep-05	\$1,498,585.88	\$1,250,522.23	\$1,471,963.88	\$1,223,900.23	\$1,425,230.38	\$1,177,166.73	\$1,372,124.13	\$1,124,060.48
Oct-05	\$1,475,904.93	\$1,227,841.28	\$1,431,534.93	\$1,183,471.28	\$1,373,540.73	\$1,125,477.08	\$1,307,638.23	\$1,059,574.58
Nov-05	\$1,458,034.35	\$1,209,970.70	\$1,391,479.35	\$1,143,415.70	\$1,321,586.45	\$1,073,522.80	\$1,242,162.70	\$994,099.05
Dec-05	\$1,405,454.23	\$1,157,390.59	\$1,312,277.23	\$1,064,213.59	\$1,229,847.63	\$981,783.99	\$1,136,177.63	\$888,113.99
Jan-06	\$1,408,551.99	\$1,160,488.34	\$1,284,315.99	\$1,036,252.34	\$1,188,711.69	\$940,648.04	\$1,080,070.44	\$832,006.79
Feb-06	\$1,373,258.29	\$1,125,194.65	\$1,213,526.29	\$965,462.65	\$1,104,109.29	\$856,045.65	\$979,771.79	\$731,708.15
Mar-06	\$1,401,793.61	\$1,153,729.97	\$1,202,128.61	\$954,064.97	\$1,078,260.91	\$830,197.27	\$937,502.16	\$689,438.52
Apr-06	\$1,391,180.70	\$1,143,117.06	\$1,147,145.70	\$899,082.06	\$1,008,189.30	\$760,125.66	\$850,284.30	\$602,220.66
May-06	\$1,343,362.03	\$1,095,298.38	\$1,050,520.03	\$802,456.38	\$895,836.93	\$647,773.28	\$720,060.68	\$471,997.03
Jun-06	\$1,340,994.97	\$1,092,931.32	\$994,908.97	\$746,845.32	\$823,861.17	\$575,797.52	\$629,488.67	\$381,425.02
Jul-06	\$1,311,862.68	\$1,063,799.04	\$908,095.68	\$660,032.04	\$720,045.18	\$471,981.54	\$506,351.43	\$258,287.79
Aug-06	\$1,282,091.64	\$1,034,028.00	\$816,206.64	\$568,143.00	\$610,515.44	\$362,451.80	\$376,775.44	\$128,711.80
Sep-06	\$1,276,154.51	\$1,028,090.86	\$743,714.51	\$495,650.86	\$519,744.61	\$271,680.96	\$265,233.36	\$17,169.71
Oct-06	\$1,237,680.84	\$989,617.20	\$634,248.84	\$386,185.20	\$391,362.24	\$143,298.60	\$115,354.74	(\$132,708.90)
Nov-06	\$1,217,895.08	\$969,831.43	\$539,034.08	\$290,970.43	\$276,592.78	\$28,529.13	(\$21,635.97)	(\$269,699.62)
Dec-06	\$1,229,728.53	\$981,664.89	\$471,001.53	\$222,937.89	\$188,367.53	(\$59,696.11)	(\$132,807.47)	(\$380,871.11)
Jan-07	\$1,215,271.49	\$967,207.84	\$372,241.49	\$124,177.84	\$68,776.79	(\$179,286.86)	(\$276,069.46)	(\$524,133.11)
Feb-07	\$1,202,540.32	\$954,476.67	\$270,770.32	\$22,706.67	(\$54,163.08)	(\$302,226.73)	(\$423,405.58)	(\$671,469.23)
Mar-07	\$1,188,104.99	\$940,041.35	\$163,157.99	(\$84,905.65)	(\$183,882.11)	(\$431,945.75)	(\$578,245.86)	(\$826,309.50)
Apr-07	\$1,176,934.63	\$928,870.99	\$54,373.63	(\$193,690.01)	(\$315,411.17)	(\$563,474.81)	(\$735,621.17)	(\$983,684.81)
May-07	\$1,170,325.48	\$922,261.84	(\$54,286.52)	(\$302,350.16)	(\$447,454.02)	(\$695,517.66)	(\$894,235.27)	(\$1,142,298.91)
Jun-07	\$1,183,064.91	\$935,001.27	(\$148,035.09)	(\$396,098.73)	(\$565,223.29)	(\$813,286.93)	(\$1,039,300.79)	(\$1,287,364.43)

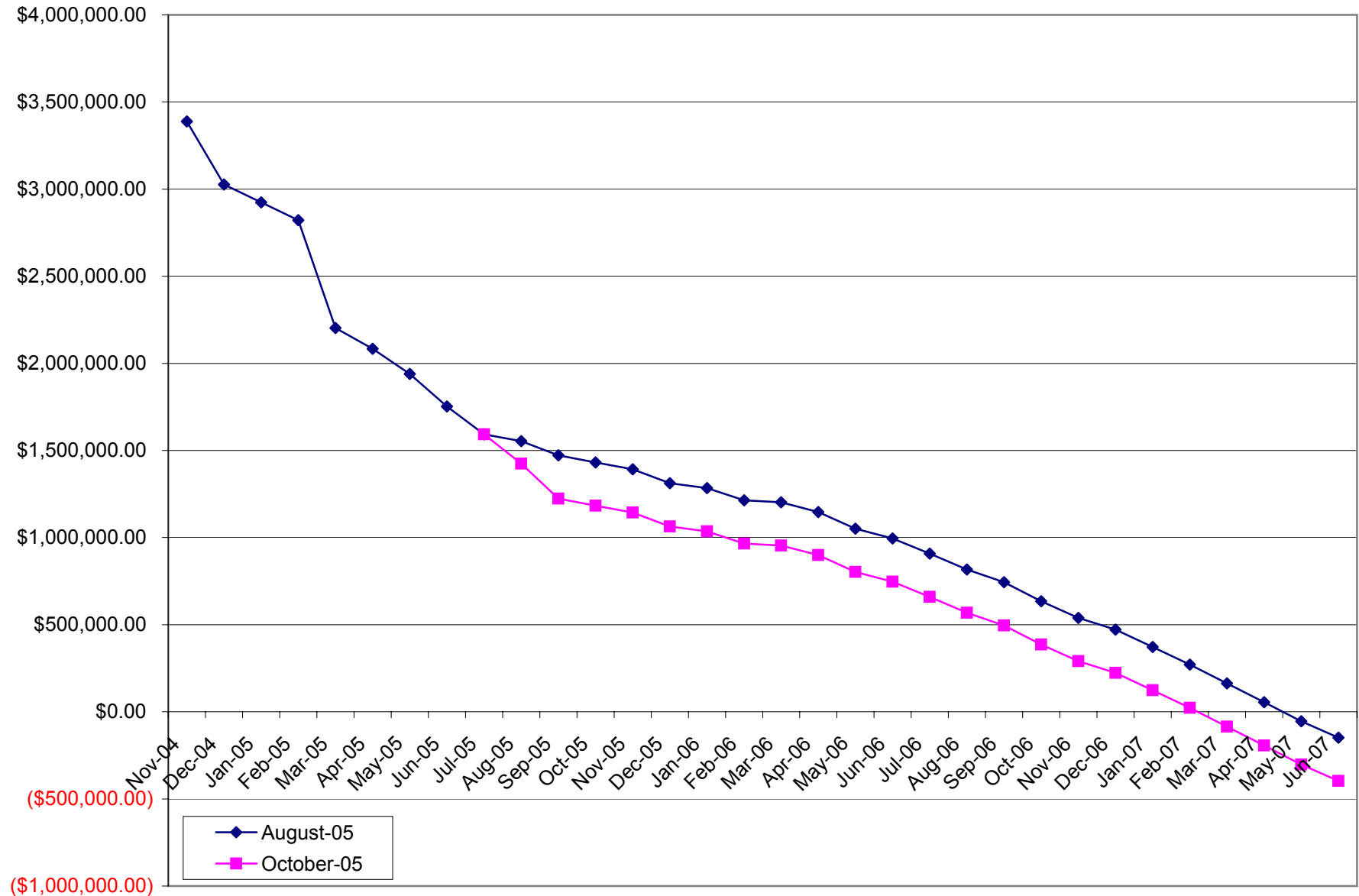
Note:

1. The equipment distribution program is assumed to collect and disburse funds at a monthly rate equal to 1/12 its annual appropriation.

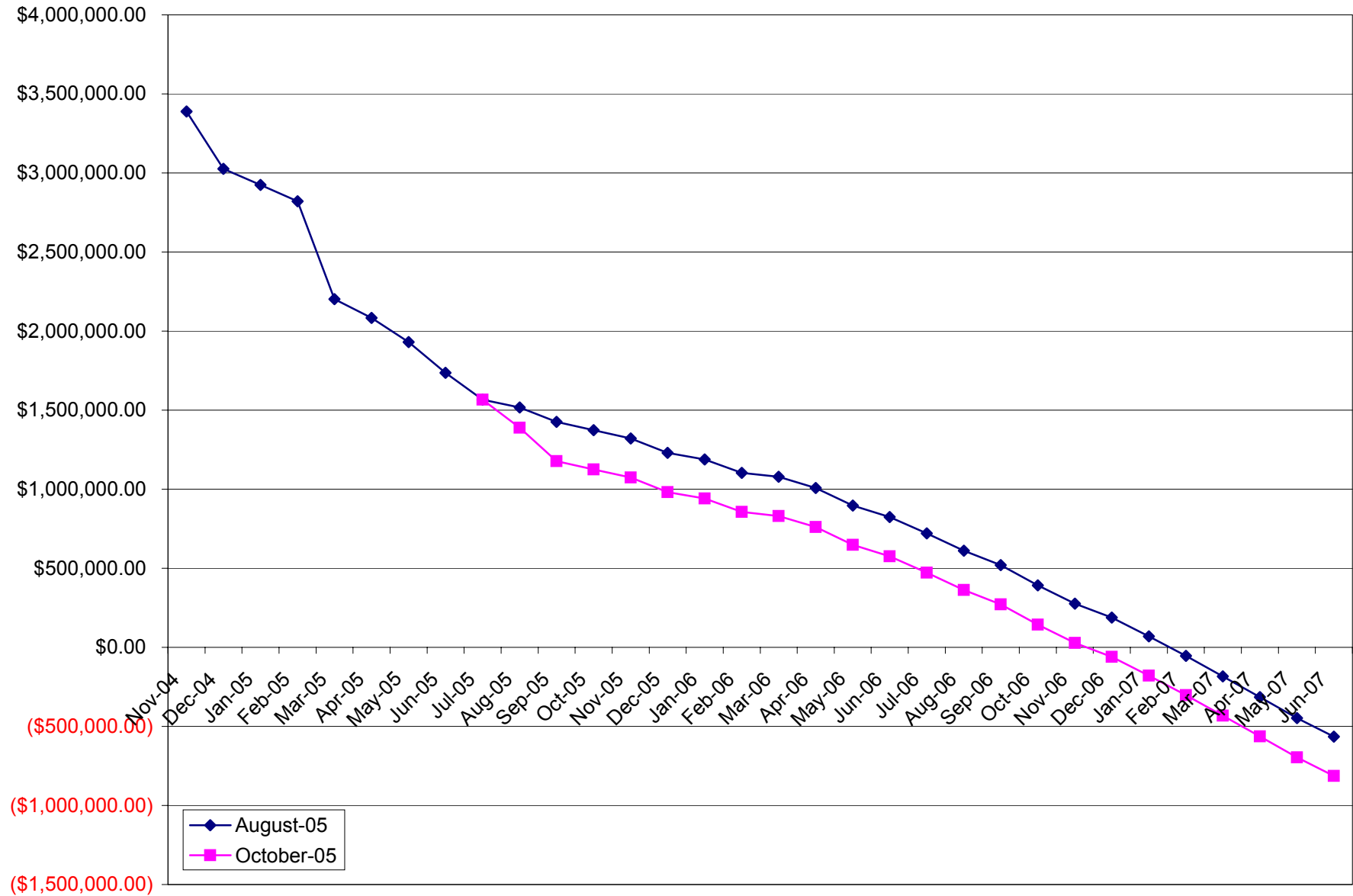
**Impact on Fund Balance of \$0.14 Surcharge Imposed in August or October 2005 with CapTel  
Distribution Frozen on June 30, 2005 and 153 Minutes Average Monthly Residual Captel Usage**



**Impact on Fund Balance of \$0.14 Surcharge Imposed In August or October 2005 with 20 Additional CapTel Phones Distributed per Month and 153 Minutes Average Monthly CapTel Usage**



**Impact on Fund Balance of \$0.14 Surcharge Imposed in August or October 2005 with 20 Additional CapTel Phones Distributed per Month and 175 Minutes Average Monthly CapTel Usage**



**Impact on Fund Balance of \$0.14 Surcharge Imposed in August or October 2005 with 20 Additional CapTel Phones Distributed per Month and 200 Minutes Average Monthly CapTel Usage**

