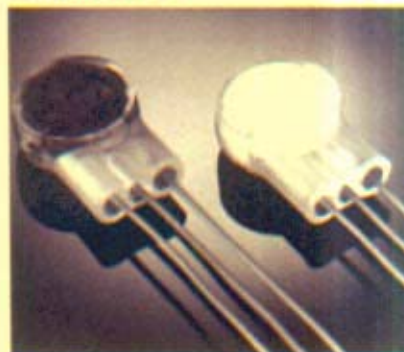


Scotchlok™ Connectors and Tools

Over 30 years ago, 3M introduced the industry's original U element connector, the Scotchlok™ UR Connector. The latest series of connectors, the Scotchlok UR2, UY2, and UB2A Connectors, feature that same originality in technology advantages, building on the successful Scotchlok Connector's design, shape, color-coded cap concepts, and element technology. The Series 2 Connectors additionally offer full wire range capability, increased port size to accommodate up to 2.08 mm (.082") insulation sizes, double elements in all products, and a solvent resistant plastic construction.

UR2/UR2-D Butt Connectors



The UR2 Connector accepts two or three solid copper conductors that can be of different wire gauges for butt splicing. The connector is filled with a moisture resistant sealant and the UR2-D connector is a dry version.

RUS Listed.

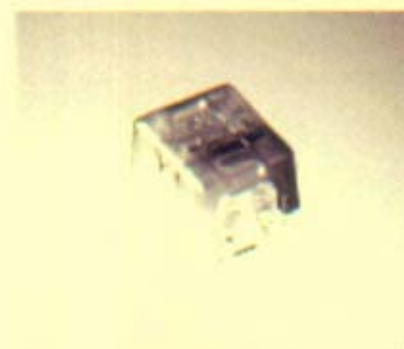
UY2/UY2-D Butt Connectors



The size of the UY2 connector reduces the splicing bundle O.D. to a minimum. The wires joined can be of different wire gauges. Factory inserted sealant seals out moisture. In addition, the UY2 connector is available in a dry version, UY2-D connector.

RUS Listed.

UB2A/UB2A-D Tap Connectors



The UB2A connector has a pre-crimp feature that gives the craftsperson a time-saving edge. By positioning the connector on the conductor and pre-crimping, the conductor is prevented from slipping out of the connector before the crimp is completed. Like the UR2 connector, a factory sealant insulates against moisture and seals out corrosion. The UB2A-D connector is a dry version of the UB2A connector.

The UB2A connector permits tapping directly onto an existing conductor without interrupting service. In ready access closures, the UB2A connector eliminates cutting cable pairs, opening circuits, and piecing out wires.

RUS Listed.



Product Referral Generator

Compounds/Encapsulants	pg. 82
Shield Bonding	pg. 122
Buried Closures	pg. 89
SLIC™ Aerial Closures	pg. 72

MS²™ Splicing Modules and Accessories

The MS²™ Super-Mini 25-pair and MS² Super Mate 25-pair Splicing Modules provide the reliability of soldered connections, the efficiency of multi-pair splicing, plus the proven performance of MS² splicing system.

The MS² 4000TR Series Super-Mini and 4005TR Series Super Mate Modules are the basic components of MS² Modular System Splicing from 3M. The modules are building blocks of a systematized splicing technology that can reduce installation time of outside or inside plant and in addition can reduce reworking demands, and save both time and effort in your construction and maintenance programs. Also, to make your job easier, all MS² modules are now transparent.

U-shaped contacts enable solder-equivalent connections

The MS² 4000 TR 25-pair Series Super-Mini and MS² 4005TR Super Mate Modules feature an array of U-shaped, phosphor-bronze contacts and stainless steel cut-off blades.

As a module is crimped, each contact strips the insulation from the positioned wire and securely grips the conductor. During this crimping operation, the cut-off blades inside each module trim the excess wire.

A single crimp completes a gas-tight connection on all 25-pairs in the module.

It's simple and fast, because there's no need to strip or trim any of the individual pairs.

Pair testing is easy

Test entry ports on the front side of all modules provide access for testing individual pairs. All tests can be accomplished without opening the module, stripping insulation, or otherwise interrupting service.

The rugged design and construction of the modules can withstand crimping and reopening to facilitate transfers or cable rearrangements at any time.



19

4005-DPM/16 16-Pair Pluggable Module



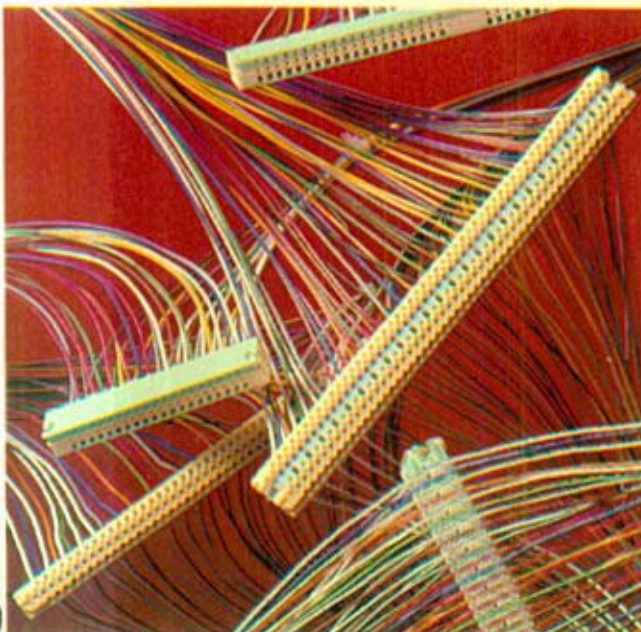
20

The 4005-DPM/16 module gives technicians the ability to perform cutovers quickly, at low cost, and without service interruption. Plus, each cutover is easily reversed. Modules are simply plugged or unplugged in 16-pair groups.

The MS²™ 4005-DPM/16 Pluggable Module is a fire-retardant, 16-pair dry pluggable module designed for installation and switching of cable pairs within the central office (CO) or PBX room. This module enables personnel to rearrange and transfer working circuits without interrupting service.

Características:

- Engaste simultáneo de cables de comunicaciones con hilos conductores rígidos de cobre o aluminio. Disponibles en versiones seco, autoextinguible o engrasado de 10, 20 ó 25 pares.
- Incorporan cuchilla para cortar los hilos conductores sobrantes sin interrumpir el servicio.
- Opción con base y tapa transparentes para facilitar la inspección visual.
- Disponen de canales para comprobación eléctrica una vez engastados.
- Todos los productos que figuran en este catálogo son fabricados bajo un sistema de gestión de la Calidad certificada por ISO 9001.



El sistema modular AMP STACK comprende las familias de conectores AMP STACK Mark III y AMP STACK Mark IV así como los Kits de utillaje de aplicación para el engaste simultáneo de cables de comunicaciones. La familia de conectores AMP STACK Mark IV están recomendados para hilos conductores de mayor grosor.

Los conectores modulares AMP STACK pueden usarse para empalmar, enchufar (puente) y derivar cables de comunicaciones. Los conectores modulares AMP STACK han sido certificados por las principales operadoras telefónicas de todo el mundo como la DEUTSCHE TELEKOM (Alemania), Korean Telecom, British Telecom (BT), MPT (China), Telefónica del Perú y por Telefónica (España), entre otras muchas.

El sistema modular AMP STACK es totalmente compatible con los productos y utillaje actualmente disponibles en el mercado.

Aplicaciones:

Los conectores modulares AMP STACK sirven para una amplia gama de aplicaciones en planta exterior. Con el módulo recto pueden empalmarse mangueras de cables de comunicaciones emplazando los conectores en hileras.

El módulo enchufable permite la interconexión entre módulos de forma apilada. Esto es gracias al contacto tipo horquilla girada del módulo enchufable que encaja sobre el contacto del módulo adyacente.

El módulo enchufable puede montarse sobre otro módulo recto, de derivación u otro enchufable según convenga.

En casos de cambio de equipos, o cambios de sección de cable, es necesario llevar a cabo una sangría mediante una derivación. Para una derivación de un cable pasante sin cortar los conductores, utilizar el módulo de derivación. También es posible llevar a cabo una derivación usando un módulo recto junto con otro enchufable, o bien con tres módulos enchufables.

The AMP STACK Modular system comprises the AMP STACK Mark III and the AMP STACK Mark IV families of connectors as well as Application Tooling Kits for mass termination of communication cables. The AMP STACK Mark IV family of connectors are recommended for thicker solid conductor wires.

The AMP STACK Modular Connectors can be used for straight splicing, pluggable (bridging) and half-tapping of communication cables.

The AMP STACK Modular Connectors have been approved by the main PTT operators around the World like the DEUTSCHE TELEKOM (Germany), Korean Telecom, British Telecom (BT), MPT (China), Telefónica del Perú and the Spanish Telefónica among others.

The AMP STACK Modular system is fully compatible with products and tooling available in the market.

Product Features:

- Mass termination of communication cables with solid copper or aluminium conductor wires. Available in dry, flame retardant or pre-sealed versions of 10, 20 or 25 pairs.
- Incorporate cut off blades to trim the excess wire when the connector is crimped without discontinuing service.
- Optional transparent base and cover available for easier visual inspection.
- Holes for electrical checking after application.
- All products in this catalogue are produced under a Quality Management System certified to ISO 9001.



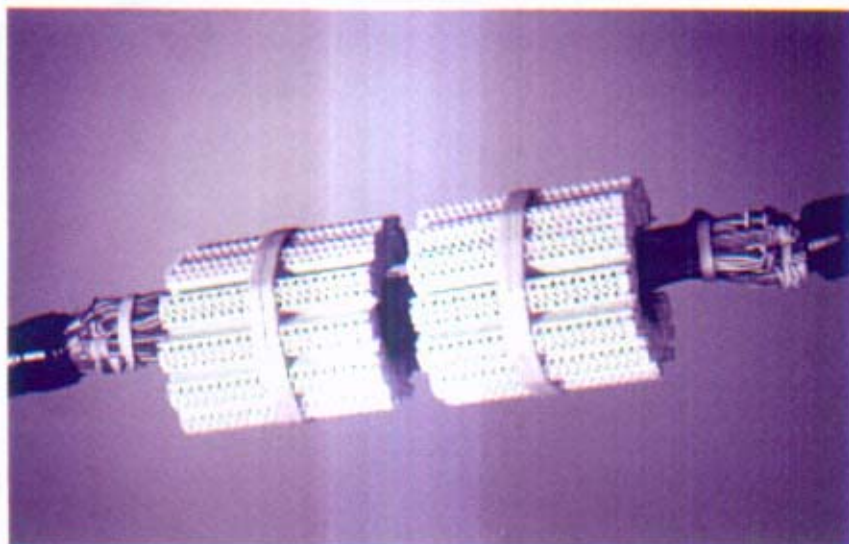
Application:

The AMP STACK Modular Connectors are useful in many outside plant applications. For splicing communication cables, splicing modules are recommended, placing them in banks.

Pluggable module is designed for stacking applications. This is thanks to its tuning-fork type contact that mates upon next module contact. Pluggable module mates with a splicing, a half-tap or another pluggable module depending on application.

In case of equipment replacement, or changing cable section, draining is needed by means of tapping. For tapping a through cable without cutting conductors, use the half-tap module. It is also possible to tap using a splicing module together with a pluggable one, or using three pluggable modules.

MS²™ 10-Pair Super-Mini Splicing Modules



34

Multi-pair splicing; full wire range

The MS² 10-Pair Super-Mini Splicing Modules provide the reliability of soldered connections, plus the efficiency of multi-pair splicing in 10-pair units. This eliminates the need to strip or trim any of the individual pairs, saving time and simplifying the process.

For added convenience and efficiency, all MS² super-mini modules accept 0.35 mm - 0.9 mm (26-19 AWG) solid copper up to a maximum insulation outside diameter of 1.8 mm (0.70) PIC, pulp and paper-insulated conductors.

Solder-equivalent connections

The MS² 10-pair super-mini modules feature an array of U-shaped, phosphor-bronze contacts and stainless steel cut-off blades.

As a module is crimped, each contact strips the insulation from the positioned wire and securely grips the conductor. During this crimping operation, the cut-off blades inside each module trim the excess wire.

A single crimp completes a gas-tight, solder equivalent connection on all pairs in the module.

9700-10/TR Module for two-wire straight splicing i

The 9700-10/TR module provides for two-wire straight splicing. Like all super-mini modules, the 9700-10 module is designed so that wire gauges and insulation types may be mixed in the module.

9708-10/TR Module for half-tap splicing i

The 9708-10 Super-Mini Module is similar to the 9700-10 module, except that the cut-off blades have been eliminated from the bottom of the modules. This allows the through wires to be half-tapped without cutting the conductors. The wires in the base are electrically connected, but are not cut off.

9700-DWP/TR Module for water resistant* splicing i

The 9700-DWP/TR System consists of a 9700-10/TR Module, a 9777-S Sealant Box, and an insertion tool for seating the module.

Designed specifically for buried and underground plant applications where PIC cable is not pressurized, the sealant box protects the splice by filling the module wire channels and test ports with a moisture resistant sealant. This simplifies reentry and reworking when necessary. The 9700-DWP module is also recommended for use in aerial applications where additional moisture protection is desired.

The 9777-S sealant box may be ordered separately. An applicator tool is provided to facilitate installation.

*The term "water resistant" applies to this system as determined according to 3M Test Method Number TPO200-05.

9700-C/TR Super Mini Module i

Encapsulated Super-Mini Module for protection against humidity and condensation.

Ordering Information

Description	Pkg. kg (lbs.)/ctn.	Min. order
9700-DWP/TR 10-Pair Splicing Module/Sealant Box Combination (10 modules, 1 applicator and 10 sealant boxes per box)	5 boxes/ctn., .29 (.63)	50 each
9700-10/TR 10-Pair Super-Mini Splicing Module (100 covers 100 bases and 100 bodies per box)	10 boxes/ctn., 1.07 (2.35)	100 each
9700-C/TR Super Mini Module (encapsulated transparent) (100 covers 100 bases and 100 bodies per box)	10 boxes/ctn., 1.34 (2.95)	1000 each
9708-10/TR 10-Pair Super-Mini Half-Tap Module (100 covers 100 bases and 100 bodies per box)	10 boxes/ctn., 1.06 (2.33)	1000 each
9777-S 10-Pair Super-Mini Sealant Box (20 sealant boxes and 1 applicator per box)	5 boxes/ctn., .28 (.61)	100 each

International Shipments only, source of supply - 3M Germany.
Contact your local 3M Representative for additional ordering information.