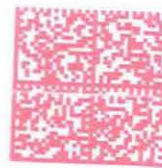


Missouri Public Service Commission

Data Center
P.O. Box 360
Jefferson City, Missouri 65102-0360

MO 419-2651 (9-10)

FIRST CLASS



02 1M
0008006519
MAILED FROM ZIP CODE 65109
\$ 00.46⁵
SEP 12 2016

FILED³

SEP 23 2016

Missouri Public
Service Commission

Star Communications
802 Enterprise
Cape Girardeau, MO 63702

NIXIE 631 DE 1 0009/20/16

RETURN TO SENDER
ATTEMPTED - NOT KNOWN
UNABLE TO FORWARD

SC: 63102036000 *1149-01165-12-39

63702036000

BEFORE THE PUBLIC SERVICE COMMISSION OF THE STATE OF MISSOURI

In the Matter of Staff's Review of the Commission's)
Chapter 31 Rules)

File No. TW-2017-0078

ORDER OPENING A WORKING CASE REGARDING STAFF'S REVIEW OF ITS CHAPTER 31 RULES REGARDING UNIVERSAL SERVICE

Issue Date: September 9, 2016

Effective Date: September 9, 2016

The Commission is opening this file to assist its Staff in its review of the Commission's Chapter 31 rules regarding universal service. Staff intends to seek input from interested stakeholders on how to best conform the Commission's rule with recent developments at the federal level. Staff may conduct its review in the manner it finds most efficient. The Commission may issue additional orders regarding that review if requested to do so by Staff.

This file shall serve as a repository for documents and comments. Using this file, anyone with an interest in this matter may view documents and may submit any pertinent responsive comments or documents. As this is not a contested case, anyone may file a comment without counsel and without *ex parte* constraints (arising from this matter). Intervention requests are not necessary to submit comments or view documents.

The public is welcome to submit comments by forwarding electronic communications through the Commission's electronic filing and information system (EFIS) or by mailing written comments. You may submit electronic comments at the Commission's website at <http://www.psc.mo.gov>. (Click on the EFIS/Case filings link on the left side of the page. Scroll down and click on the public comment link. Please refer to File No. TW-2017-0078).

Written comments in hard copy should be addressed to the Commission at P.O. Box 360, Jefferson City, Missouri 65102 and should also reference File No. TW-2017-0078. The public can view the contents of the file by following the link at <http://www.psc.mo.gov>.

THE COMMISSION ORDERS THAT:

1. This case is established as a repository for documents and comments regarding Staff's review of the Commission's Chapter 31 rules regarding universal service.
2. The Commission's data center shall mail a copy of this order to all Missouri ILECs, CLECs and VoIP providers, as well as to all wireless carriers holding ETC status in Missouri.
3. This order shall be effective when issued.



BY THE COMMISSION

A handwritten signature in black ink that reads "Morris L. Woodruff". The signature is written in a cursive style.

Morris L. Woodruff
Secretary

Morris L. Woodruff, Chief Regulatory Law Judge,
by delegation of authority pursuant to
Section 386.240, RSMo 2000.


Dated at Jefferson City, Missouri,
on this 9th day of September, 2016.

STATE OF MISSOURI

OFFICE OF THE PUBLIC SERVICE COMMISSION

I have compared the preceding copy with the original on file in this office and I do hereby certify the same to be a true copy therefrom and the whole thereof.

WITNESS my hand and seal of the Public Service Commission, at Jefferson City, Missouri, this 9th day of September 2016.


Morris L. Woodruff
Secretary

MISSOURI PUBLIC SERVICE COMMISSION

September 9, 2016

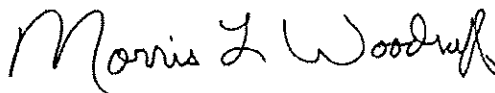
File/Case No. TW-2017-0078

**Missouri Public Service Commission
Staff Counsel Department
200 Madison Street, Suite 800
P.O. Box 360
Jefferson City, MO 65102
staffcounsel@psc.mo.gov**

**Office of the Public Counsel
James Owen
200 Madison Street, Suite 650
P.O. Box 2230
Jefferson City, MO 65102
opc@psc.mo.gov**

Enclosed find a certified copy of an Order or Notice issued in the above-referenced matter(s).

Sincerely,



***Morris L. Woodruff
Secretary***

Distributed to all Missouri ILECs, CLECs and IVoIP providers, as well as to all wireless carriers holding ETC status in Missouri

Recipients listed above with a valid e-mail address will receive electronic service. Recipients without a valid e-mail address will receive paper service.