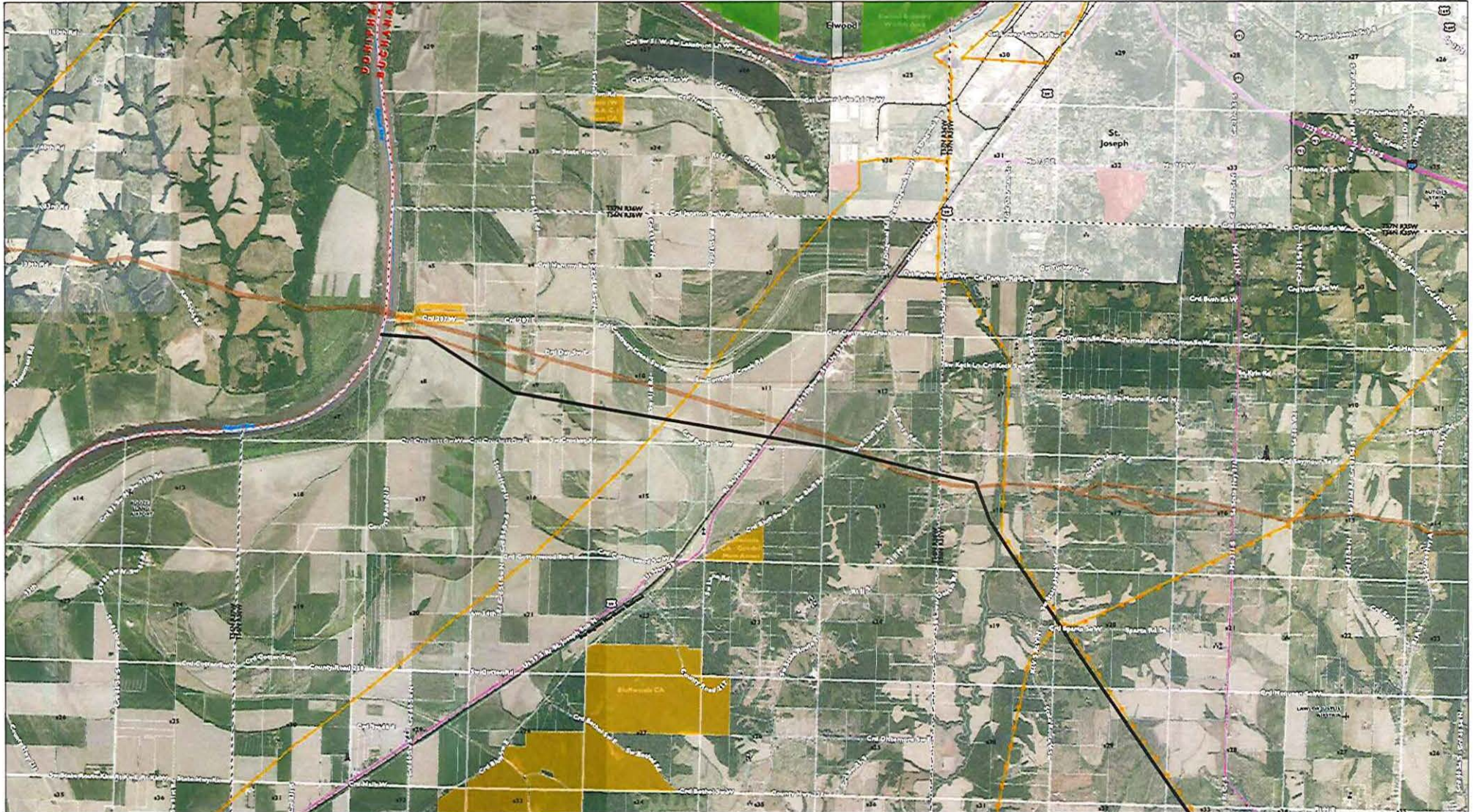


**This map depicts the proposed route as of March 26, 2014 and is subject to change. Modifications may result from landowner consultation, final engineering and design, environmental permitting, and other surveying results.**



**Legend**

— Proposed Route*	— Railroad	▲ Cellular Tower
✈ Airport	— Pipeline Corridor	⚰ Cemetery
▭ County Boundary	— Existing Transmission	⛪ Church
⊞ Public Land Survey System	— >230 kV	🏢 Commercial Building
Parcel boundaries shown with white outline	— 138 kV and 161 kV	🏠 Recreation Site
	— <115 kV	🎓 School

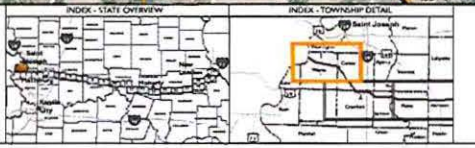
**Conservation Lands**

Private/Local
State Land
Federal Land

Imagery Source: National Agriculture Imagery Program (NAIP) 2011, 2012

## Grain Belt Express Clean Line Missouri Proposed Route

\*Line width is to scale for a typical 150-foot wide easement.

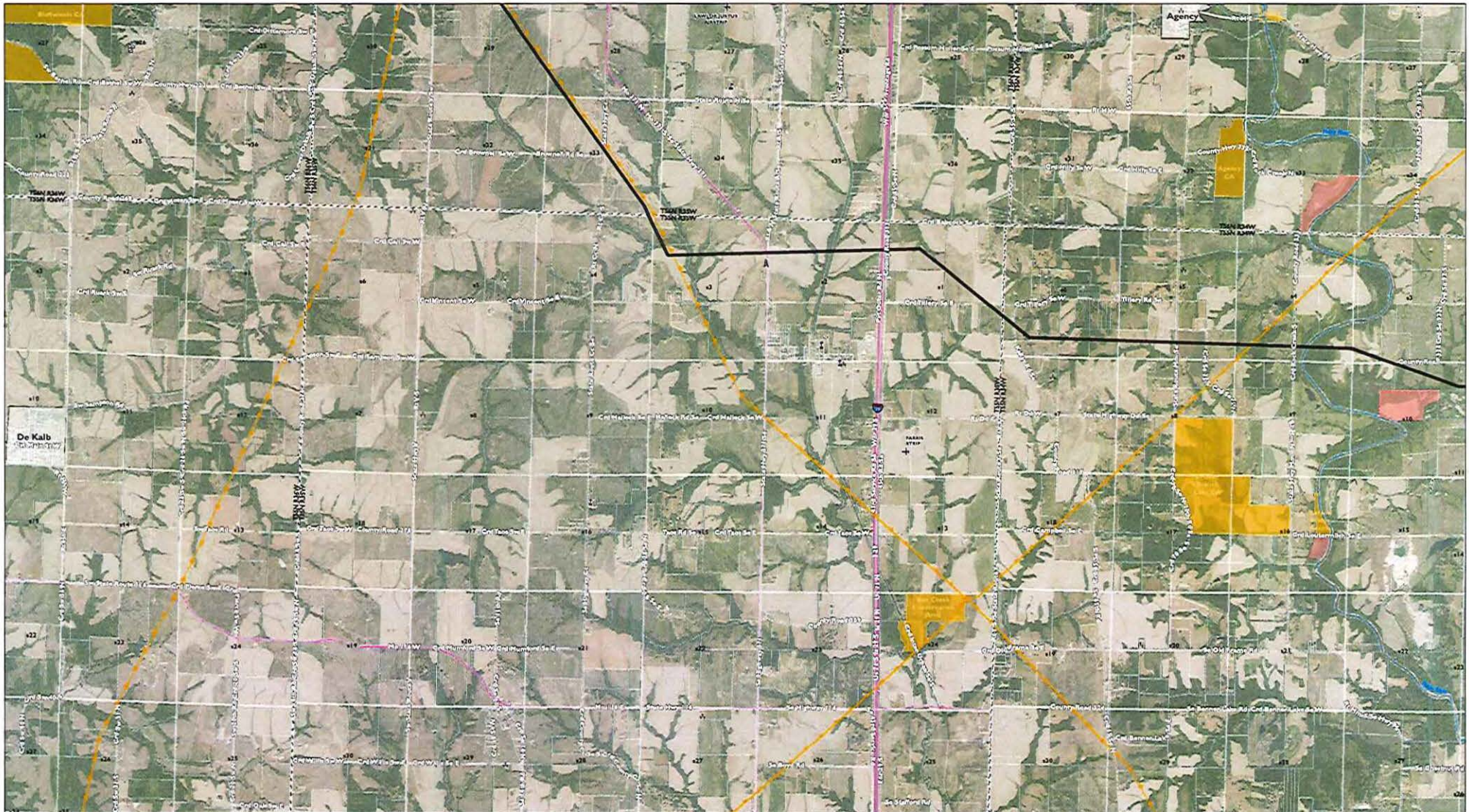


**Tile 1 of 21**  
**GRAIN BELT EXPRESS**

1 in = 2,000 feet when produced at a page size of 22" by 34"  
 or 1 in = 4,000 feet when produced at a page size of 11" by 17"



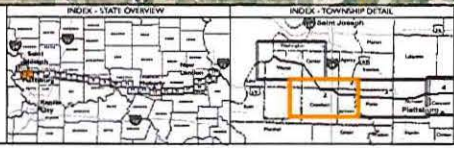
**This map depicts the proposed route as of March 26, 2014 and is subject to change. Modifications may result from landowner consultation, final engineering and design, environmental permitting, and other surveying results.**



Legend	
Proposed Route*	Railroad
Airport	Pipeline Corridor
County Boundary	<b>Existing Transmission</b>
Public Land Survey System	>230 kV
Parcel boundaries shown with white outline	138 kV and 161 kV
	<115 kV
Cellular Tower	<b>Conservation Lands</b>
Cemetery	Private/Local
Church	State Land
Commercial Building	Federal Land
Recreation Site	
School	

## Grain Belt Express Clean Line Missouri Proposed Route

\*Line width is to scale for a typical 150-foot wide easement.



**Tile 2 of 21**  
**GRAIN BELT EXPRESS**  
© 2014

1 in = 2,000 feet when produced at a page size of 22" by 34"  
or 1 in = 4,000 feet when produced at a page size of 11" by 17"



**This map depicts the proposed route as of March 26, 2014 and is subject to change. Modifications may result from landowner consultation, final engineering and design, environmental permitting, and other surveying results.**



**Legend**

<ul style="list-style-type: none"> <li>— Proposed Route*</li> <li>✈ Airport</li> <li>▭ County Boundary</li> <li>⊠ Public Land Survey System</li> <li>Parcel boundaries shown with white outline</li> </ul>	<ul style="list-style-type: none"> <li>— Railroad</li> <li>— Pipeline Corridor</li> <li>Existing Transmission                             <ul style="list-style-type: none"> <li>— &gt;230 kV</li> <li>— 138 kV and 161 kV</li> <li>— &lt;115 kV</li> </ul> </li> </ul>	<ul style="list-style-type: none"> <li>A Cellular Tower</li> <li>⚰ Cemetery</li> <li>⛪ Church</li> <li>⛪ Commercial Building</li> <li>⊙ Recreation Site</li> <li>⚓ School</li> </ul>	<p><b>Conservation Lands</b></p> <ul style="list-style-type: none"> <li>Private/Local</li> <li>State Land</li> <li>Federal Land</li> </ul> <p><small>Imagery Source: National Aerial Photography Program (NAIP) 2012, MODIS NAIP 2012</small></p>
--	---	--	---

## Grain Belt Express Clean Line Missouri Proposed Route

\*Line width is to scale for a typical 150-foot wide easement.



**Tile 3 of 21**

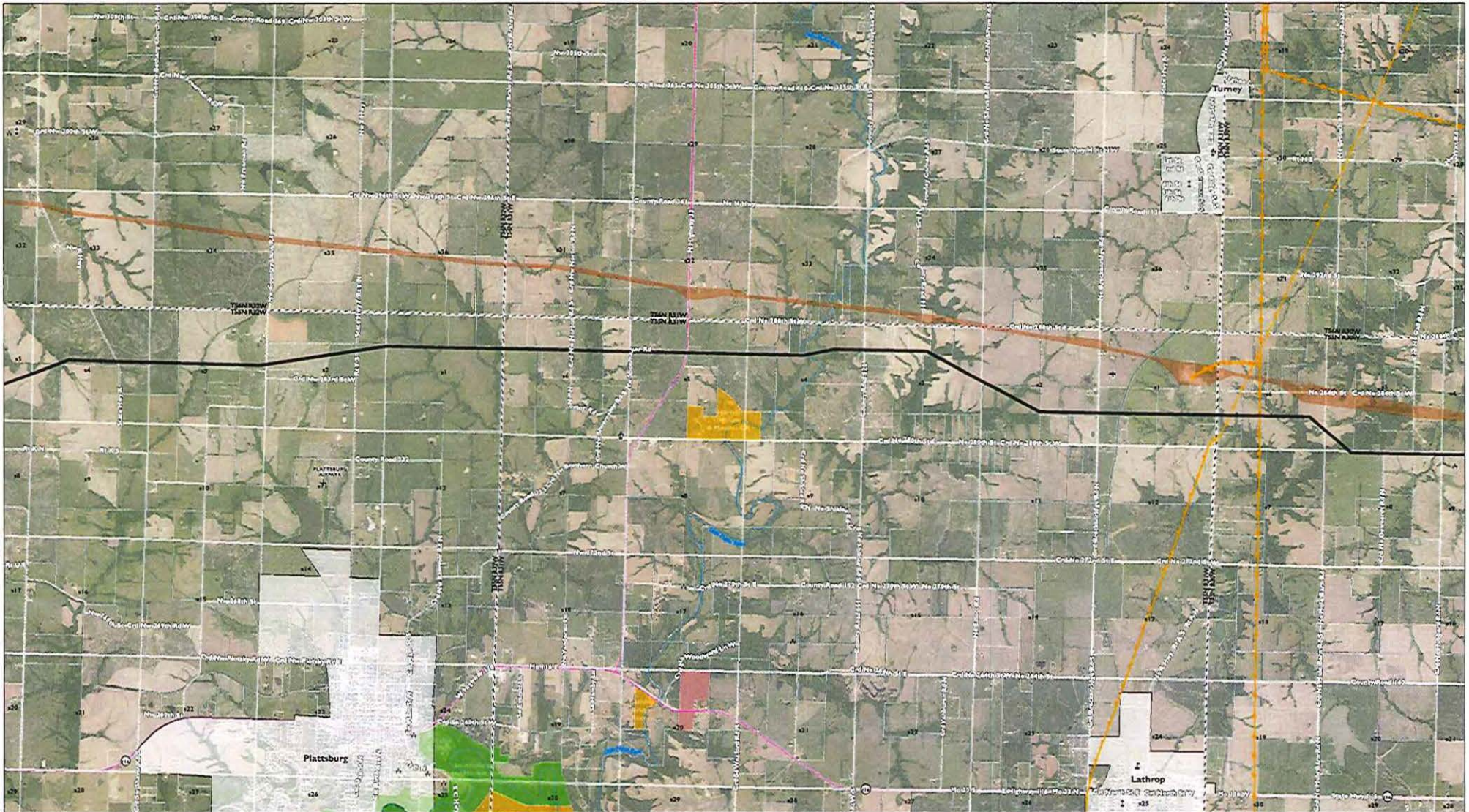
**GRAIN BELT EXPRESS**  
EXPAN-ONE

0 0.25 0.5 1 Miles

1 in = 2,000 feet when produced at a page size of 22" by 34"  
or 1 in = 4,000 feet when produced at a page size of 11" by 17"



**This map depicts the proposed route as of March 26, 2014 and is subject to change. Modifications may result from landowner consultation, final engineering and design, environmental permitting, and other surveying results.**



**Legend**

- Proposed Route\*
- ✚ Airport
- ▭ County Boundary
- ⊕ Public Land Survey System
- Parcel boundaries shown with white outline
- Railroad
- Pipeline Corridor
- Existing Transmission
  - >230 kV
  - 138 kV and 161 kV
  - <115 kV
- Ⓐ Cellular Tower
- ⚰ Cemetery
- ⚓ Church
- Ⓜ Commercial Building
- Ⓞ Recreation Site
- Ⓥ School
- Conservation Lands**
  - Private/Local
  - State Land
  - Federal Land

Imagery Source: National Aerial Photography Program (NAPP) 2012, USDA NAD 2011

## Grain Belt Express Clean Line Missouri Proposed Route

\*Line width is to scale for a typical 150-foot wide easement.



**Tile 4 of 21**

**GRAIN BELT EXPRESS**  
CLEAN LINE

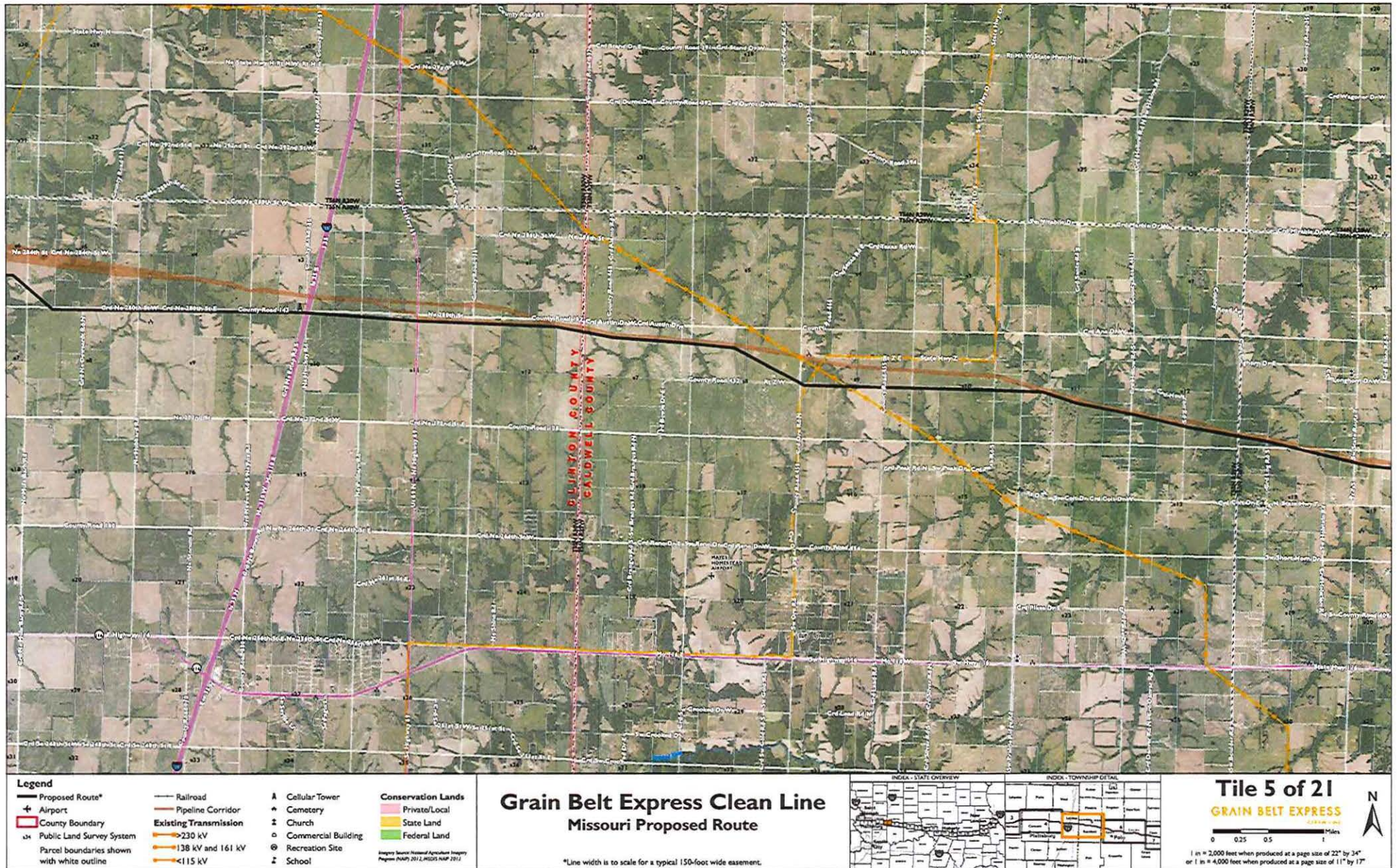
0 0.25 0.5 1 Miles

N

1 in = 2,000 feet when produced at a page size of 22" by 34"  
or 1 in = 4,000 feet when produced at a page size of 11" by 17"

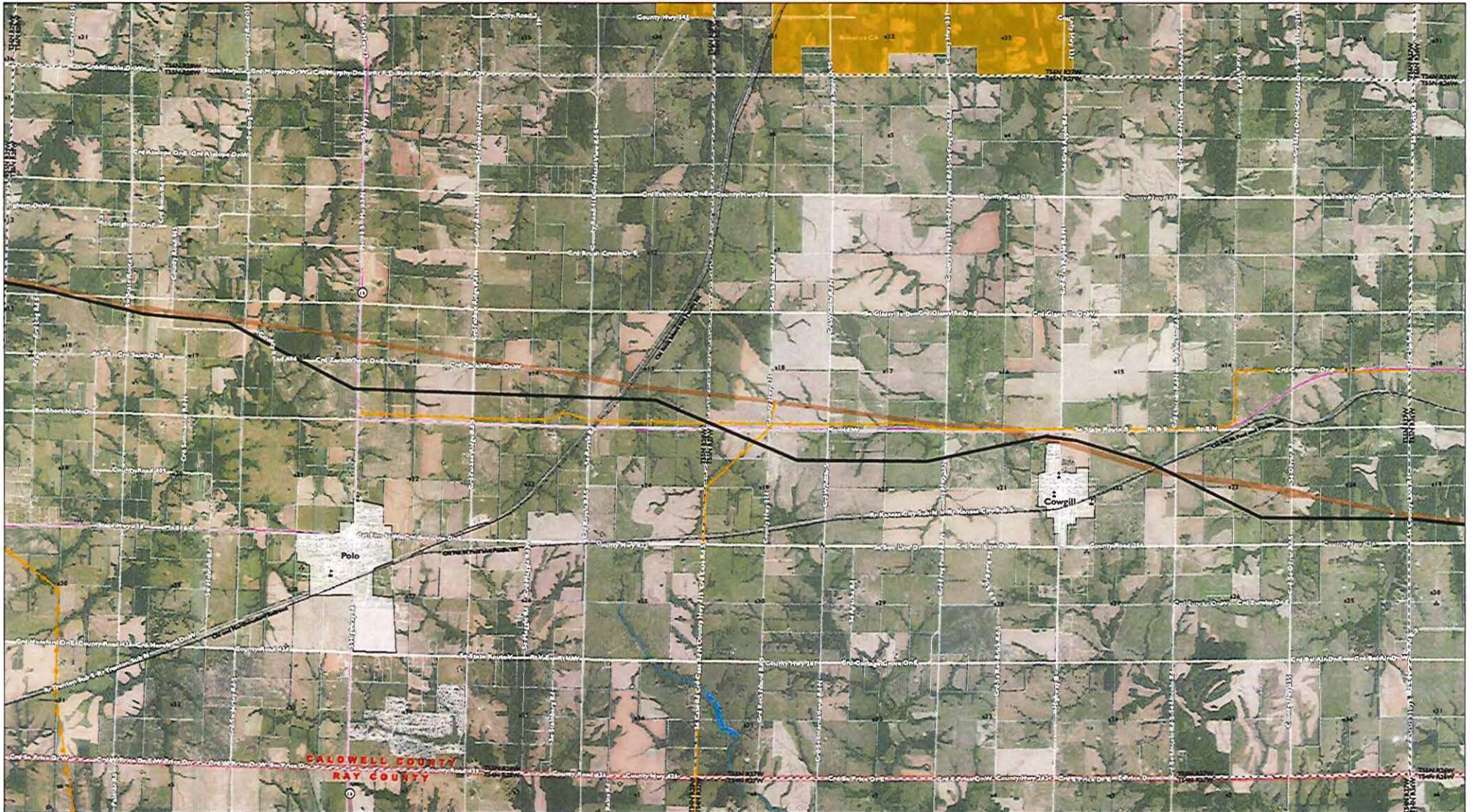


**This map depicts the proposed route as of March 26, 2014 and is subject to change. Modifications may result from landowner consultation, final engineering and design, environmental permitting, and other surveying results.**





**This map depicts the proposed route as of March 26, 2014 and is subject to change. Modifications may result from landowner consultation, final engineering and design, environmental permitting, and other surveying results.**



**Legend**

Proposed Route*	Railroad	Cellular Tower
Airport	Pipeline Corridor	Cemetery
County Boundary	Existing Transmission	Church
Public Land Survey System	>230 kV	Commercial Building
Parcel boundaries shown with white outline	138 kV and 161 kV	Recreation Site
	<115 kV	School
		<b>Conservation Lands</b>
		Private/Local
		State Land
		Federal Land

Imagery Source: National Agriculture Imagery Program (NAIP) 2012, USDA NAIP 2012

## Grain Belt Express Clean Line Missouri Proposed Route

\*Line width is to scale for a typical 150-foot wide easement.



**Tile 6 of 21**

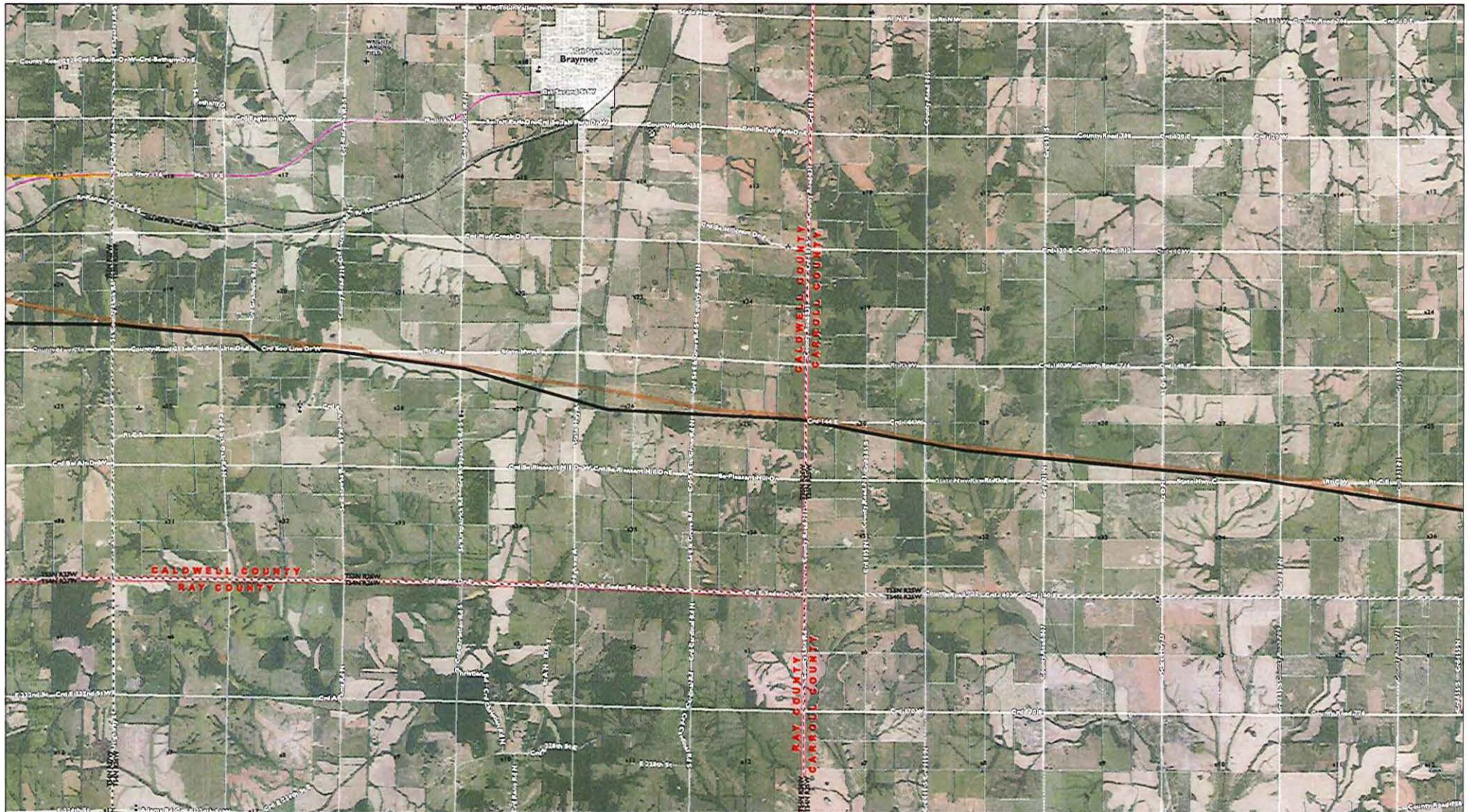
**GRAIN BELT EXPRESS**

0 0.25 0.5 1 Miles

1 in = 2,000 feet when produced at a page size of 22" by 34"  
or 1 in = 4,000 feet when produced at a page size of 11" by 17"



**This map depicts the proposed route as of March 26, 2014 and is subject to change. Modifications may result from landowner consultation, final engineering and design, environmental permitting, and other surveying results.**



**Legend**

Proposed Route*	Railroad	Cellular Tower
Airport	Pipeline Corridor	Cemetery
County Boundary	Existing Transmission	Church
Public Land Survey System	>230 kV	Commercial Building
Parcel boundaries shown with white outline	138 kV and 161 kV	Recreation Site
	<115 kV	School

**Conservation Lands**

Private/Local
State Land
Federal Land

Imagery Source: National Aeronautics and Space Administration (NASA) 2012, USDA NADP 2012

## Grain Belt Express Clean Line Missouri Proposed Route

\*Line width is to scale for a typical 150-foot wide easement.



**Tile 7 of 21**

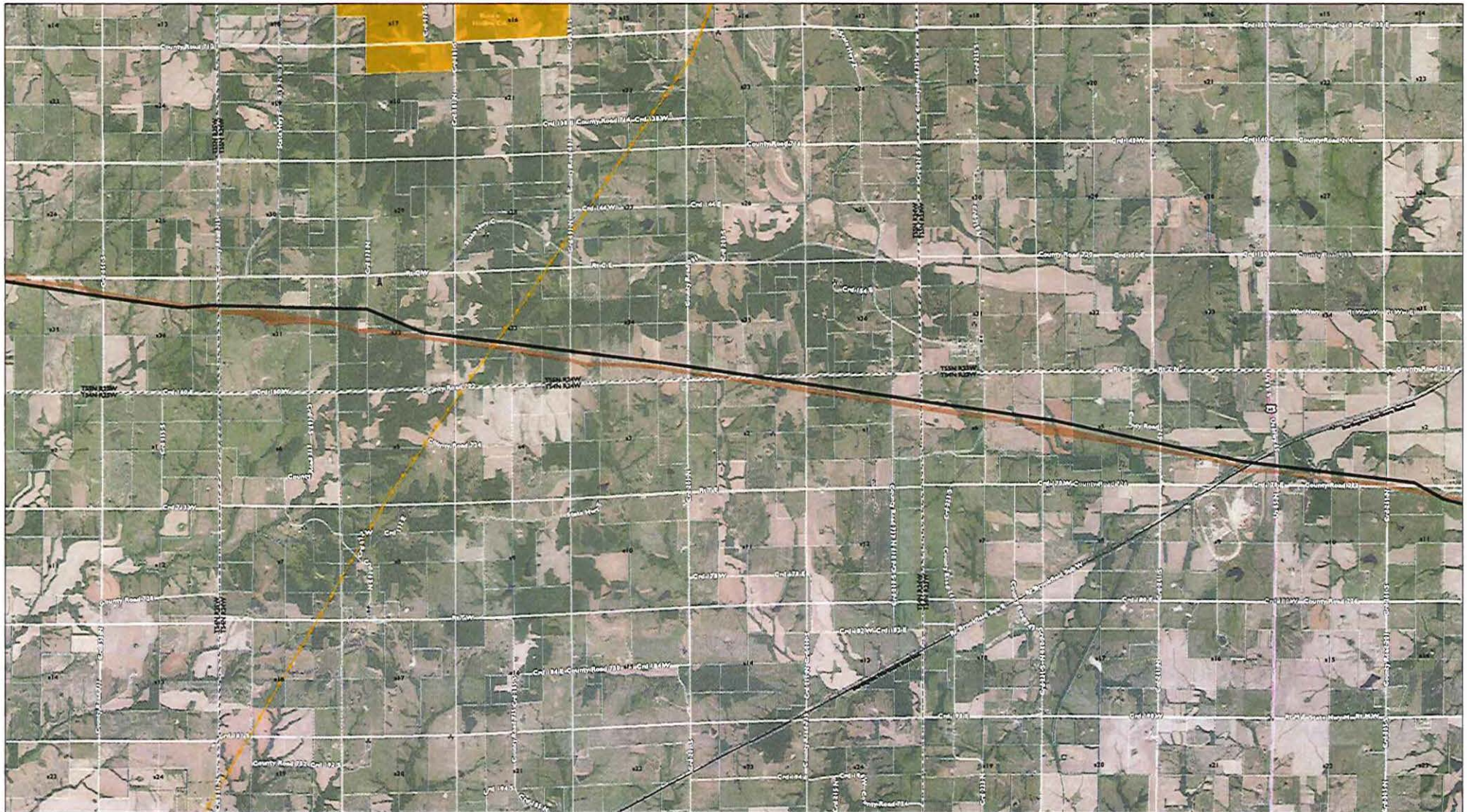
**GRAIN BELT EXPRESS**

1 in = 2,000 feet when produced at a page size of 22" by 34" or 1 in = 4,000 feet when produced at a page size of 11" by 17"

0 0.25 0.5 1 Miles



**This map depicts the proposed route as of March 26, 2014 and is subject to change. Modifications may result from landowner consultation, final engineering and design, environmental permitting, and other surveying results.**



**Legend**

- Proposed Route\*
- ✈ Airport
- ▭ County Boundary
- ⊙ Public Land Survey System
- Parcel boundaries shown with white outline
- Railroad
- Pipeline Corridor
- Existing Transmission
  - >230 kV
  - 138 kV and 161 kV
  - <115 kV
- ⬆ Cellular Tower
- ⚰ Cemetery
- ⛪ Church
- 🏠 Commercial Building
- ⊙ Recreation Site
- 🎓 School
- Conservation Lands
  - Private/Local
  - State Land
  - Federal Land

Imagery Source: National Aeronautics and Space Administration (NASA) 2012

## Grain Belt Express Clean Line Missouri Proposed Route

\*Line width is to scale for a typical 150-foot wide easement.



**Tile 8 of 21**

**GRAIN BELT EXPRESS**  
© 2014

0 0.25 0.5 1 Miles

1 in = 2,000 feet when produced at a page size of 22" by 34"  
or 1 in = 4,000 feet when produced at a page size of 11" by 17"

N



**This map depicts the proposed route as of March 26, 2014 and is subject to change. Modifications may result from landowner consultation, final engineering and design, environmental permitting, and other surveying results.**



**Legend**

<ul style="list-style-type: none"> <li>— Proposed Route*</li> <li>✈ Airport</li> <li>▭ County Boundary</li> <li>⊠ Public Land Survey System</li> <li>Parcel boundaries shown with white outline</li> </ul>	<ul style="list-style-type: none"> <li>— Railroad</li> <li>— Pipeline Corridor</li> <li>Existing Transmission                             <ul style="list-style-type: none"> <li>— &gt;230 kV</li> <li>— 138 kV and 161 kV</li> <li>— &lt;115 kV</li> </ul> </li> </ul>	<ul style="list-style-type: none"> <li>A Cellular Tower</li> <li>⚰ Cemetery</li> <li>⛪ Church</li> <li>🏢 Commercial Building</li> <li>⊕ Recreation Site</li> <li>🎓 School</li> </ul>	<p><b>Conservation Lands</b></p> <ul style="list-style-type: none"> <li>Private/Local</li> <li>State Land</li> <li>Federal Land</li> </ul> <p><small>Imagery Source: National Agriculture Imagery Program (NAIP) 2012, USDA NAIP 2012</small></p>
--	---	--	---

## Grain Belt Express Clean Line Missouri Proposed Route

\*Line width is to scale for a typical 150-foot wide easement.

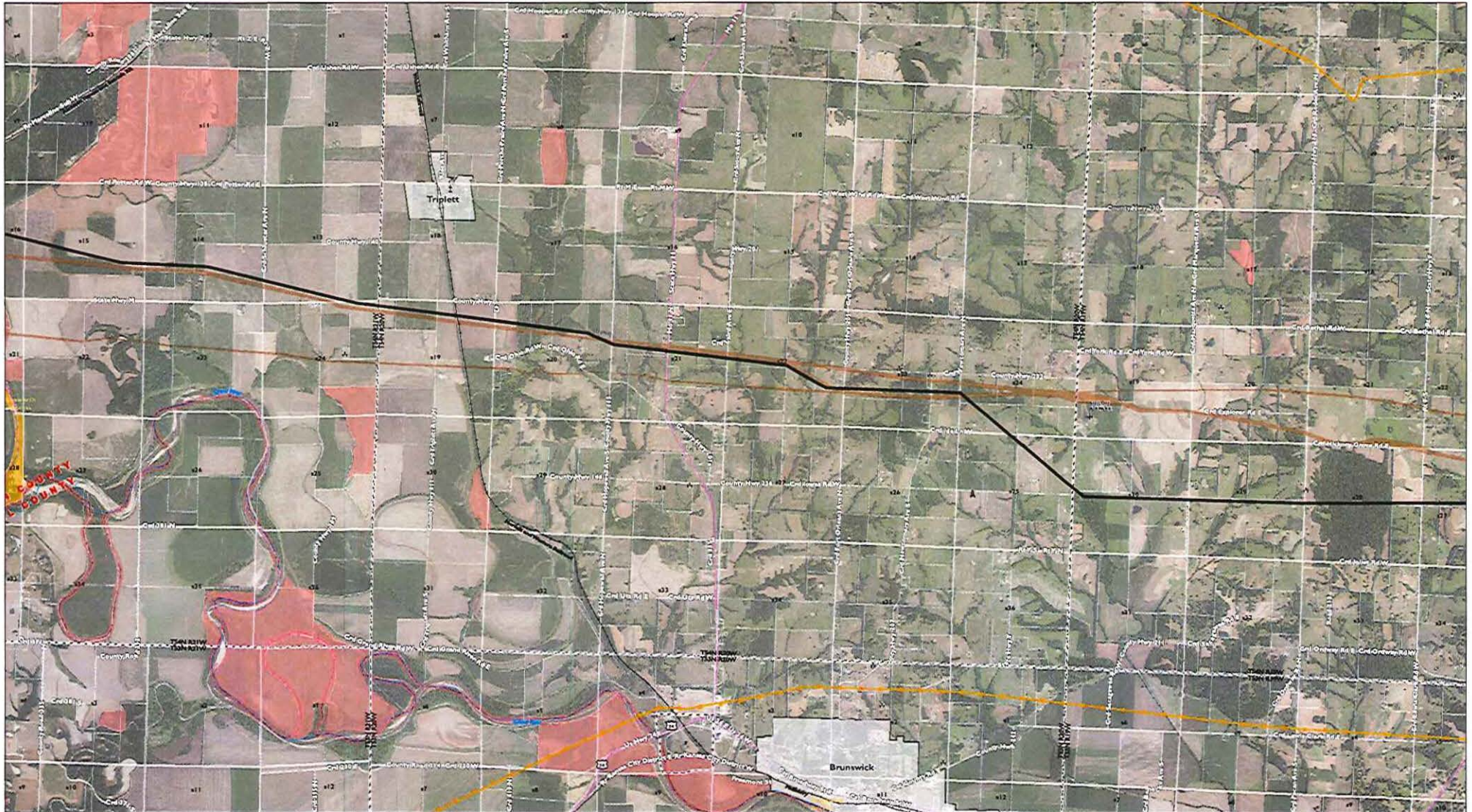


**Tile 9 of 21**  
**GRAIN BELT EXPRESS**

1 in = 2,000 feet when produced at a page size of 22" by 34"  
or 1 in = 4,000 feet when produced at a page size of 11" by 17"



**This map depicts the proposed route as of March 26, 2014 and is subject to change. Modifications may result from landowner consultation, final engineering and design, environmental permitting, and other surveying results.**



**Legend**

- Proposed Route\*
- ✈ Airport
- County Boundary
- ⊕ Public Land Survey System
- Parcel boundaries shown with white outline
- Railroad
- Pipeline Corridor
- Existing Transmission
  - >230 kV
  - 138 kV and 161 kV
  - <115 kV
- ⬢ Conservation Lands
  - Private/Local
  - State Land
  - Federal Land
- Ⓐ Cellular Tower
- Ⓐ Cemetery
- Ⓐ Church
- Ⓐ Commercial Building
- Ⓐ Recreation Site
- Ⓐ School

Imagery Source: National Aeronautics and Space Administration (NASA) 2012, AerialView, 2012

### Grain Belt Express Clean Line Missouri Proposed Route

\*Line width is to scale for a typical 150-foot wide easement.



**Tile 10 of 21**

**GRAIN BELT EXPRESS**

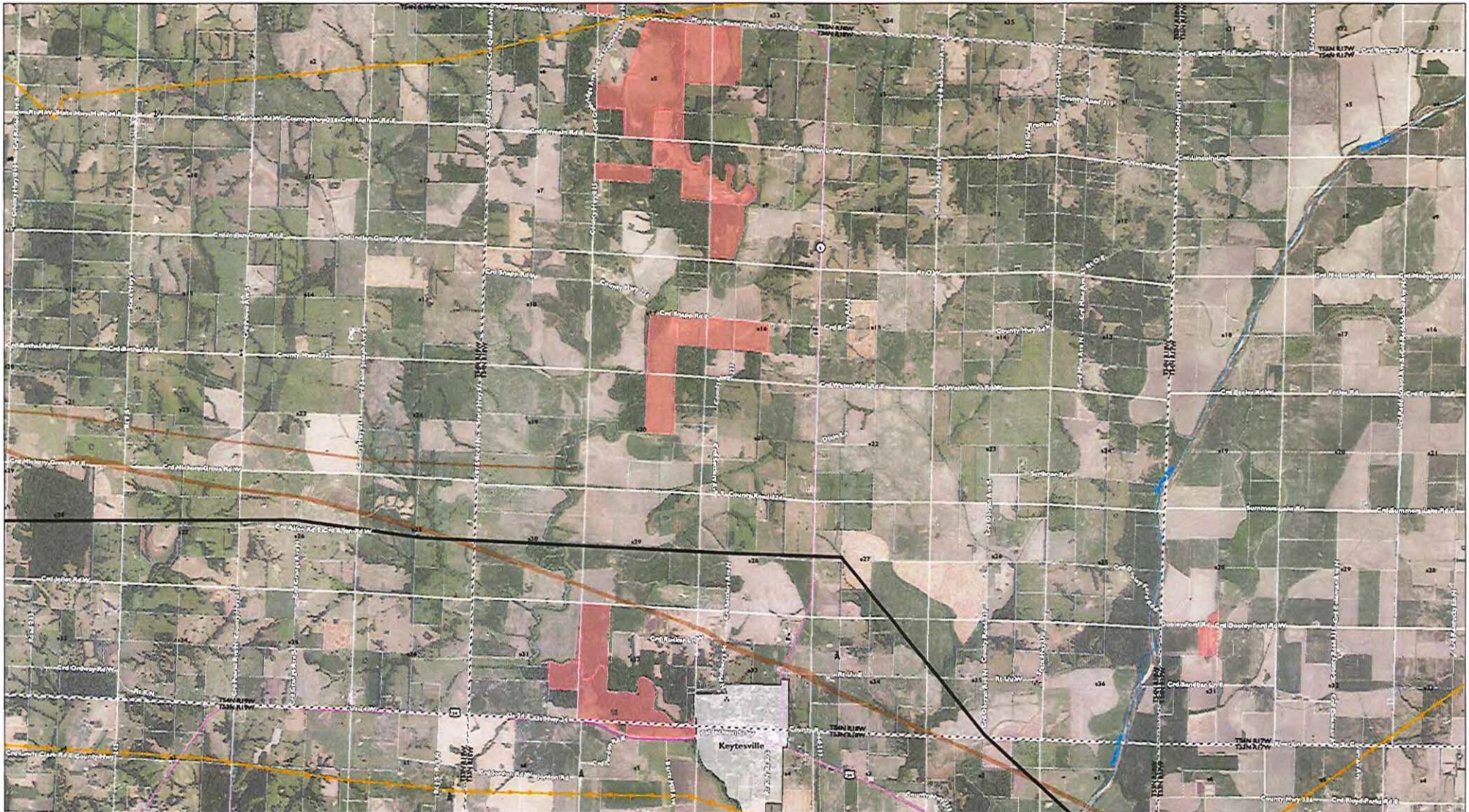
1 in = 2,000 feet when produced at a page size of 22" by 34"  
or 1 in = 4,000 feet when produced at a page size of 11" by 17"

0 0.25 0.5 1 Miles

N



**This map depicts the proposed route as of March 26, 2014 and is subject to change. Modifications may result from landowner consultation, final engineering and design, environmental permitting, and other surveying results.**



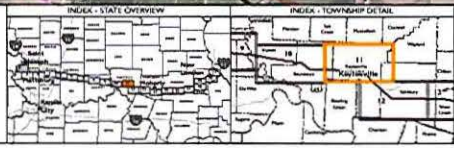
**Legend**

Proposed Route*	Railroad	Cellular Tower	Private/Local
Airport	Pipeline Corridor	Cemetery	State Land
County Boundary	Existing Transmission	Church	Federal Land
Public Land Survey System	>230 kV	Commercial Building	
Parcel boundaries shown with white outline	138 kV and 161 kV	Recreation Site	
	<115 kV	School	

Imagery Source: National Agriculture Imagery Program (NAIP) 2011, Aerial2008 NAIP 2012

## Grain Belt Express Clean Line Missouri Proposed Route

\*Line width is to scale for a typical 150-foot wide easement.



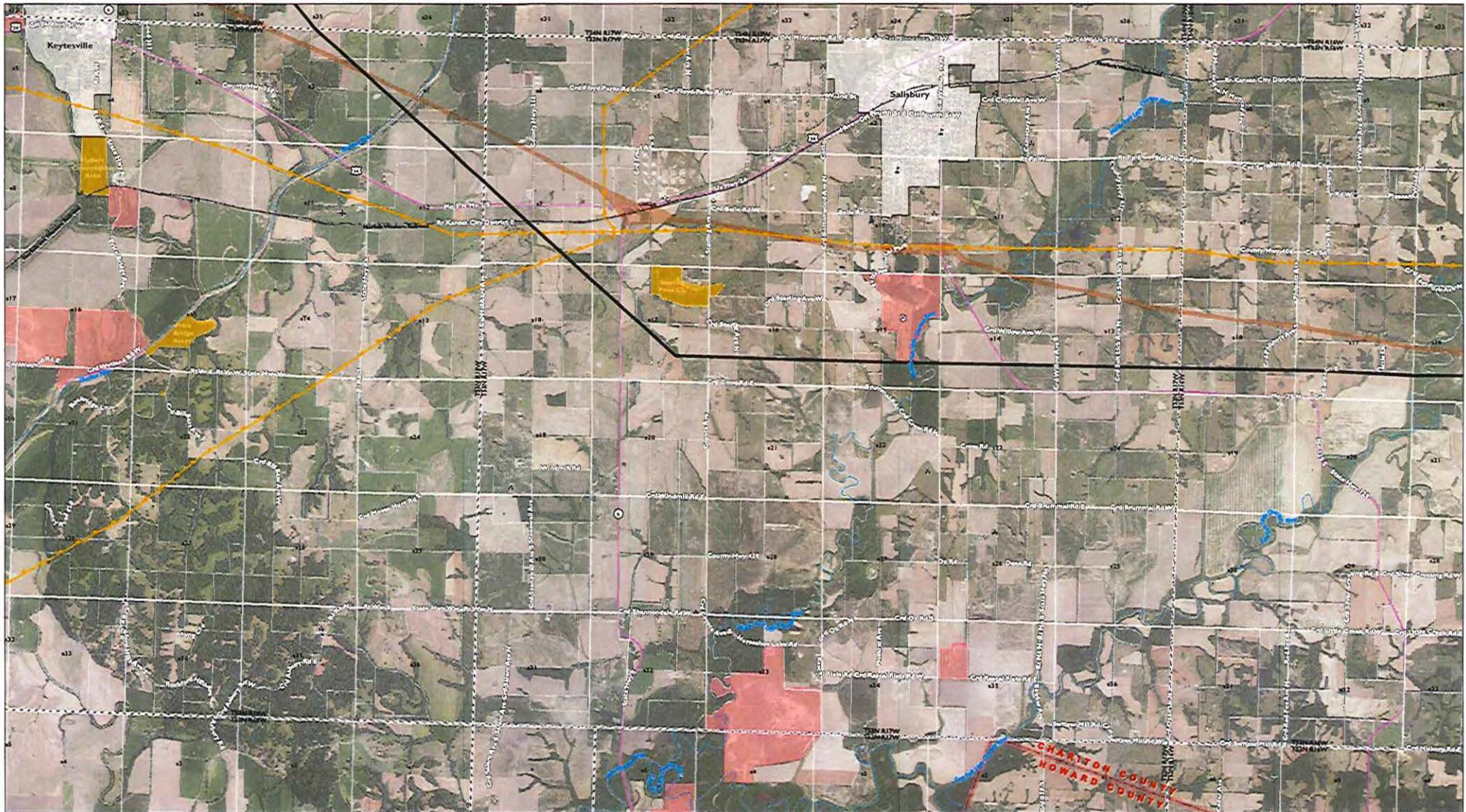
**Tile 11 of 21**  
**GRAIN BELT EXPRESS**  
CLEAN LINE

0 0.25 0.5 1 Miles

1 in = 2,000 feet when produced at a page size of 22" by 34"  
or 1 in = 4,000 feet when produced at a page size of 11" by 17"



**This map depicts the proposed route as of March 26, 2014 and is subject to change. Modifications may result from landowner consultation, final engineering and design, environmental permitting, and other surveying results.**



**Legend**

- Proposed Route\*
- ✈ Airport
- ▭ County Boundary
- ⊞ Public Land Survey System
- Parcel boundaries shown with white outline
- Railroad
- Pipeline Corridor
- Existing Transmission
  - >230 kV
  - 138 kV and 161 kV
  - <115 kV
- ⚡ Cellular Tower
- ⚰ Cemetery
- ⛪ Church
- 🏢 Commercial Building
- ⊙ Recreation Site
- 🎓 School
- Conservation Lands**
  - Private/Local
  - State Land
  - Federal Land

Imagery Source: National Agriculture Imagery Program (NAIP) 2012, PLSS/MS MAP 2012

### Grain Belt Express Clean Line Missouri Proposed Route

\*Line width is to scale for a typical 150-foot wide easement.



**Tile 12 of 21**

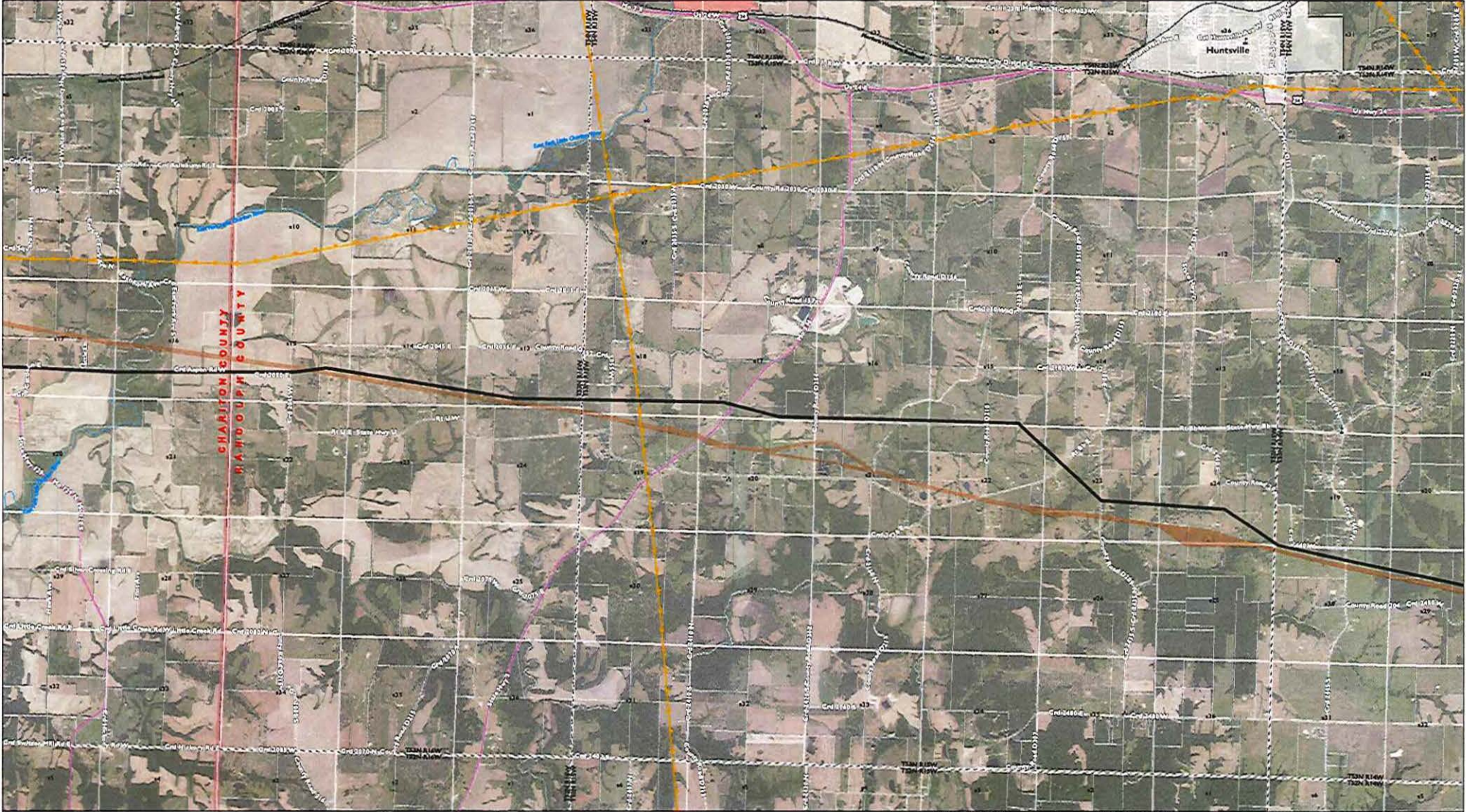
**GRAIN BELT EXPRESS**  
CLEAN LINE

0 0.25 0.5 1 Miles

1 in = 2,000 feet when produced at a page size of 22" by 34"  
or 1 in = 4,000 feet when produced at a page size of 11" by 17"



**This map depicts the proposed route as of March 26, 2014 and is subject to change. Modifications may result from landowner consultation, final engineering and design, environmental permitting, and other surveying results.**



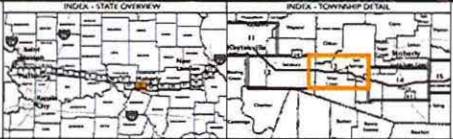
**Legend**

- Proposed Route\*
- ✈ Airport
- ▭ County Boundary
- ⊗ Public Land Survey System
- Parcel boundaries shown with white outline
- Railroad
- Pipeline Corridor
- Existing Transmission
  - >230 kV
  - 138 kV and 161 kV
  - <115 kV
- ⬮ Cellular Tower
- ⚰ Cemetery
- ⛪ Church
- Ⓜ Commercial Building
- Ⓞ Recreation Site
- Ⓜ School
- Conservation Lands
  - Private/Local
  - State Land
  - Federal Land

Imagery Source: National Aeronautics and Space Administration (NASA) 2012, MODIS MAP 2012

### Grain Belt Express Clean Line Missouri Proposed Route

\*Line width is to scale for a typical 150-foot wide easement.



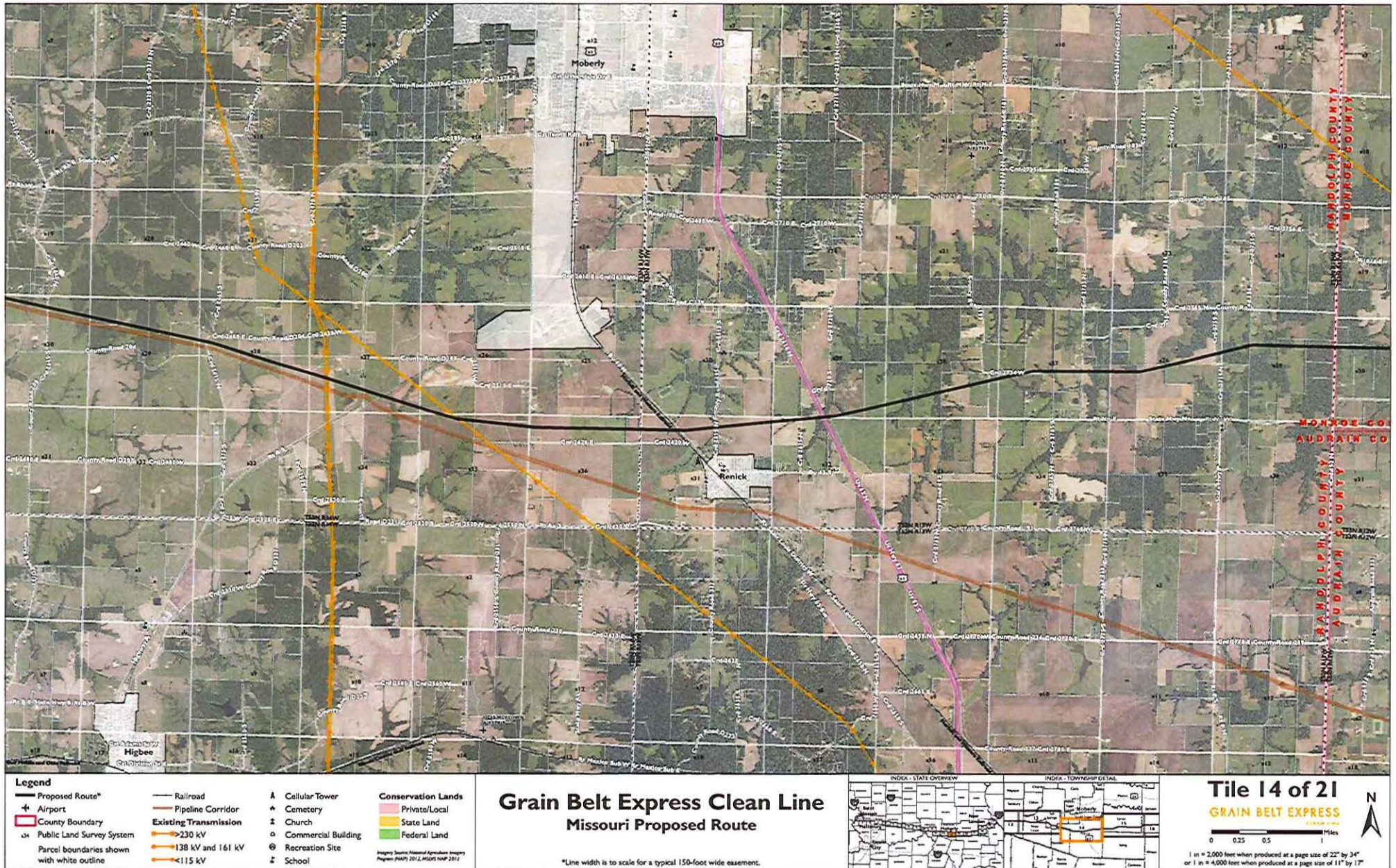
**Title 13 of 21**  
**GRAIN BELT EXPRESS**  
© 2014

0 0.25 0.5 1 Miles

1 in = 2,000 feet when produced at a page size of 22" by 34"  
 or 1 in = 4,000 feet when produced at a page size of 11" by 17"



**This map depicts the proposed route as of March 26, 2014 and is subject to change. Modifications may result from landowner consultation, final engineering and design, environmental permitting, and other surveying results.**





**This map depicts the proposed route as of March 26, 2014 and is subject to change. Modifications may result from landowner consultation, final engineering and design, environmental permitting, and other surveying results.**



**Legend**

- Proposed Route\*
- + Airport
- County Boundary
- ⊠ Public Land Survey System
- Parcel boundaries shown with white outline
- Railroad
- Pipeline Corridor
- Existing Transmission
  - >230 kV
  - 138 kV and 161 kV
  - <115 kV
- ▲ Cellular Tower
- ⊕ Cemetery
- ⊕ Church
- ⊕ Commercial Building
- ⊕ Recreation Site
- ⊕ School
- Conservation Lands
  - Private/Local
  - State Land
  - Federal Land

Imagery Source: National Agriculture Imagery Program (NAIP) 2011, MDCRS NMAP 2012

### Grain Belt Express Clean Line Missouri Proposed Route

\*Line width is to scale for a typical 150-foot wide easement.



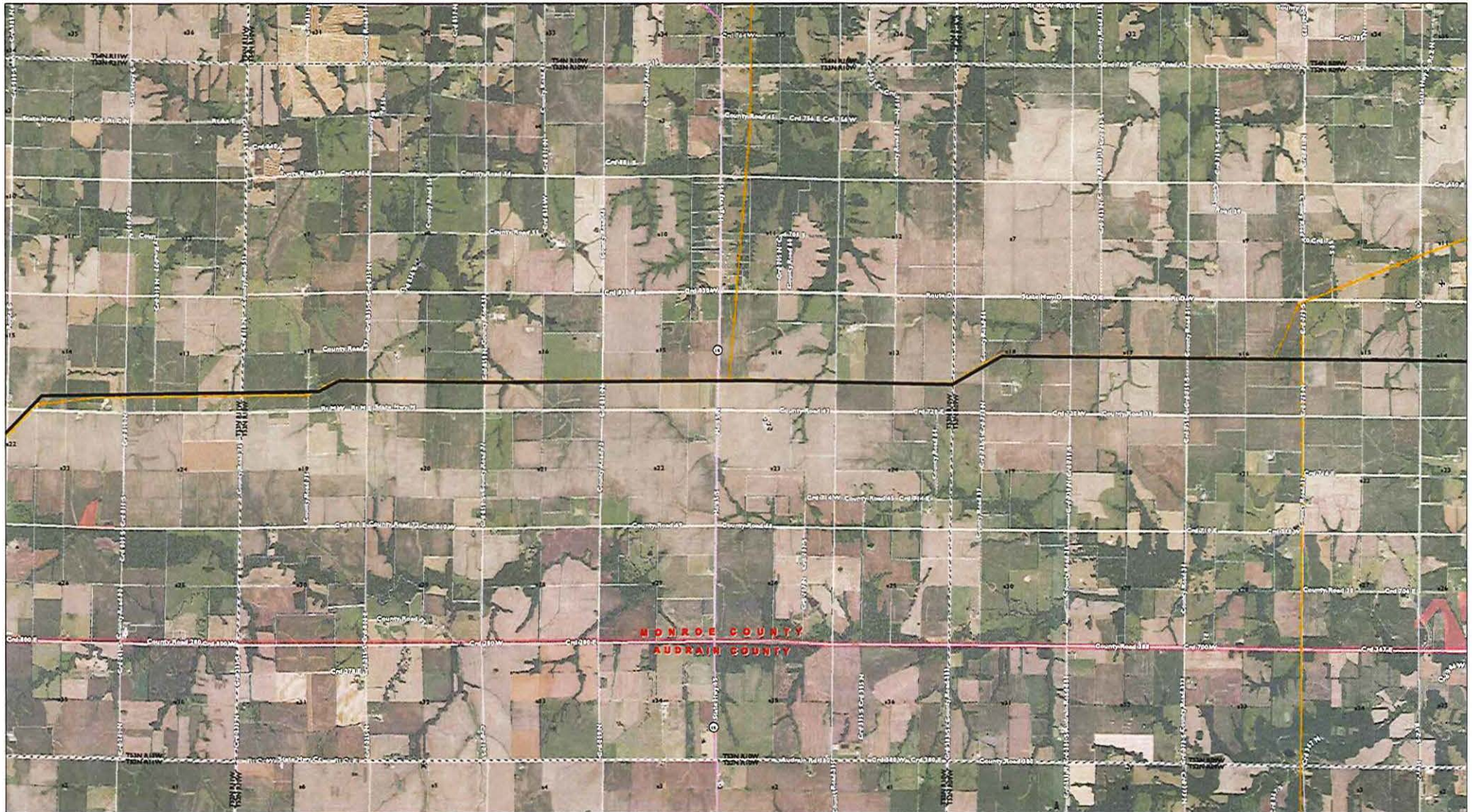
**Tile 15 of 21**  
**GRAIN BELT EXPRESS**  
15000-1100

0 0.25 0.5 1 Miles

1" = 2,000 feet when produced at a page size of 22" by 34"  
 or 1" = 4,000 feet when produced at a page size of 11" by 17"



**This map depicts the proposed route as of March 26, 2014 and is subject to change. Modifications may result from landowner consultation, final engineering and design, environmental permitting, and other surveying results.**



**Legend**

- Proposed Route\*
- ✈ Airport
- ▭ County Boundary
- ⊞ Public Land Survey System
- Parcel boundaries shown with white outline
- Railroad
- Pipeline Corridor
- Existing Transmission
  - >230 kV
  - 138 kV and 161 kV
  - <115 kV
- ⊠ Cellular Tower
- ⚰ Cemetery
- ⛪ Church
- 🏠 Commercial Building
- ⊙ Recreation Site
- 🎓 School
- Conservation Lands**
  - Private/Local
  - State Land
  - Federal Land

Imagery Source: National Agriculture Imagery Program (NAIP) 2012, MDOH MAP 2012

## Grain Belt Express Clean Line Missouri Proposed Route

\*Line width is to scale for a typical 150-foot wide easement.



**Tile 16 of 21**

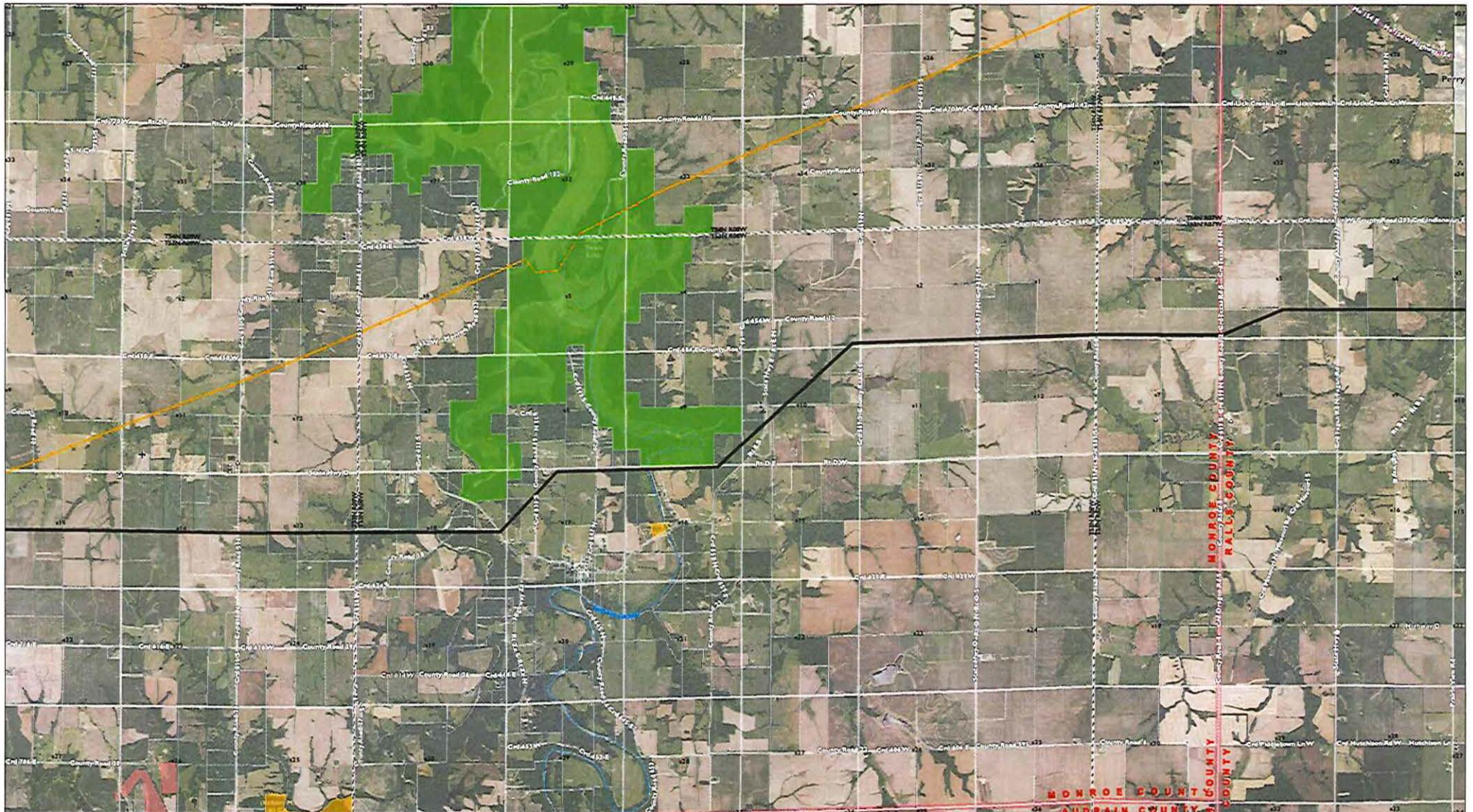
**GRAIN BELT EXPRESS**  
1500 MW

0 0.25 0.5 1 Miles

1 in = 2,000 feet when produced at a page size of 22" by 34"  
or 1 in = 4,000 feet when produced at a page size of 11" by 17"



**This map depicts the proposed route as of March 26, 2014 and is subject to change. Modifications may result from landowner consultation, final engineering and design, environmental permitting, and other surveying results.**



**Legend**

- Proposed Route\*
- + Airport
- County Boundary
- ⊞ Public Land Survey System
- Parcel boundaries shown with white outline
- Railroad
- Pipeline Corridor
- Existing Transmission
  - >230 kV
  - 138 kV and 161 kV
  - <115 kV
- ▲ Cellular Tower
- ⚰ Cemetery
- ⛪ Church
- Ⓜ Commercial Building
- Ⓞ Recreation Site
- Ⓜ School
- Conservation Lands
  - Private/Local
  - State Land
  - Federal Land

Imagery Source: National Aerial Photography Imagery Program (NAIP) 2012, ADOGS MAP 2012

### Grain Belt Express Clean Line Missouri Proposed Route

\*Line width is to scale for a typical 150-foot wide easement.



**Tile 17 of 21**

**GRAIN BELT EXPRESS**

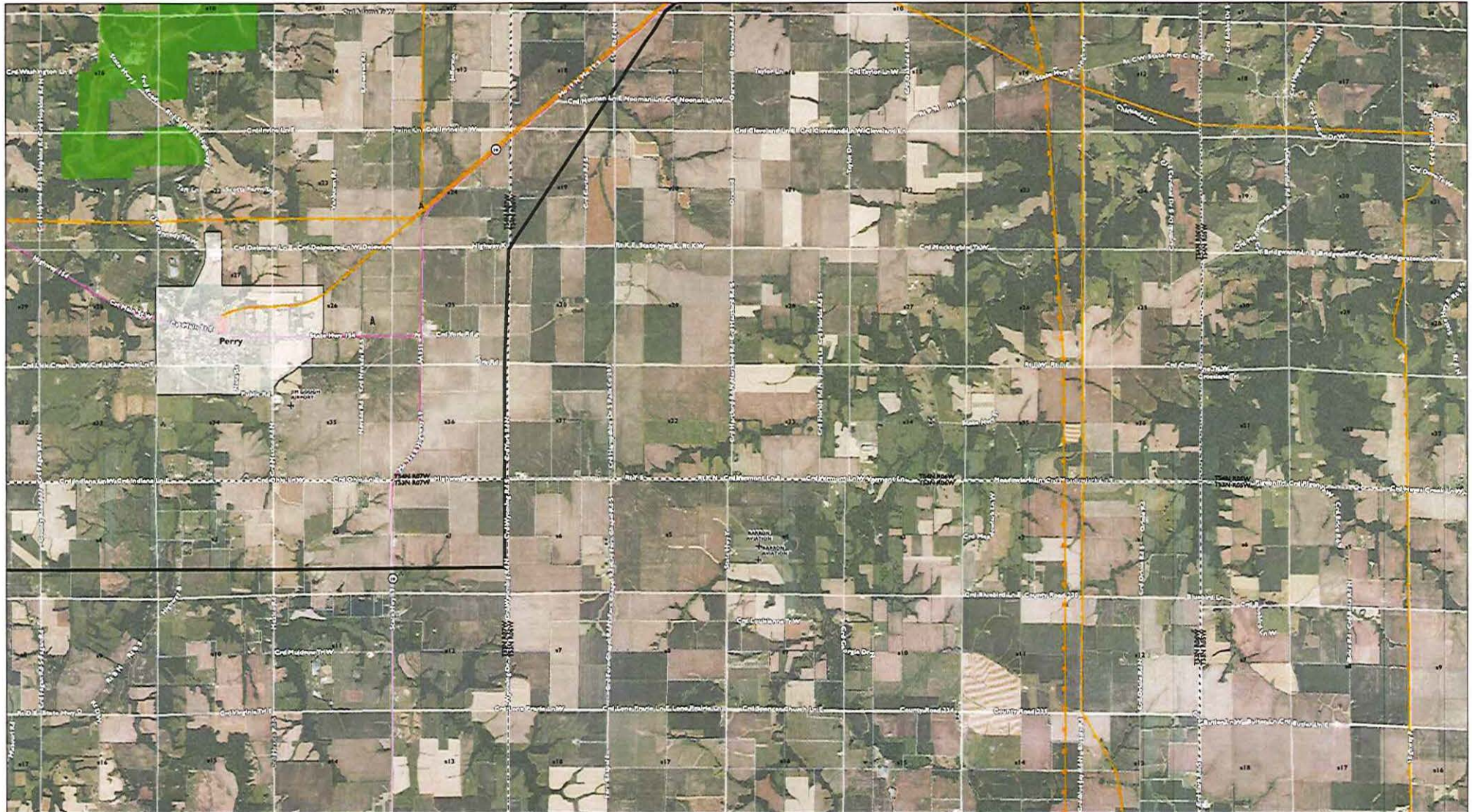
0 0.25 0.5 1 Miles

1 in = 2,000 feet when produced at a page size of 22" by 34"  
or 1 in = 4,000 feet when produced at a page size of 11" by 17"

N



**This map depicts the proposed route as of March 26, 2014 and is subject to change. Modifications may result from landowner consultation, final engineering and design, environmental permitting, and other surveying results.**



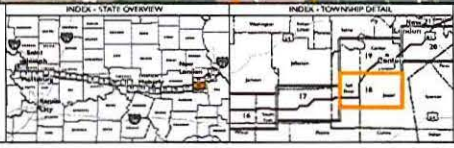
**Legend**

- Proposed Route\*
- ✈ Airport
- ▭ County Boundary
- ⊕ Public Land Survey System
- Parcel boundaries shown with white outline
- Railroad
- Pipeline Corridor
- Existing Transmission
  - >230 kV
  - 138 kV and 161 kV
  - <115 kV
- ⚡ Cellular Tower
- ⚰ Cemetery
- ⛪ Church
- 🏢 Commercial Building
- 🏠 Recreation Site
- 🎓 School
- Conservation Lands
  - Private/Local
  - State Land
  - Federal Land

Imagery Source: National Agriculture Imagery Program (NAIP) 2012, 2013; NAIP 2012

### Grain Belt Express Clean Line Missouri Proposed Route

\*Line width is to scale for a typical 150-foot wide easement.



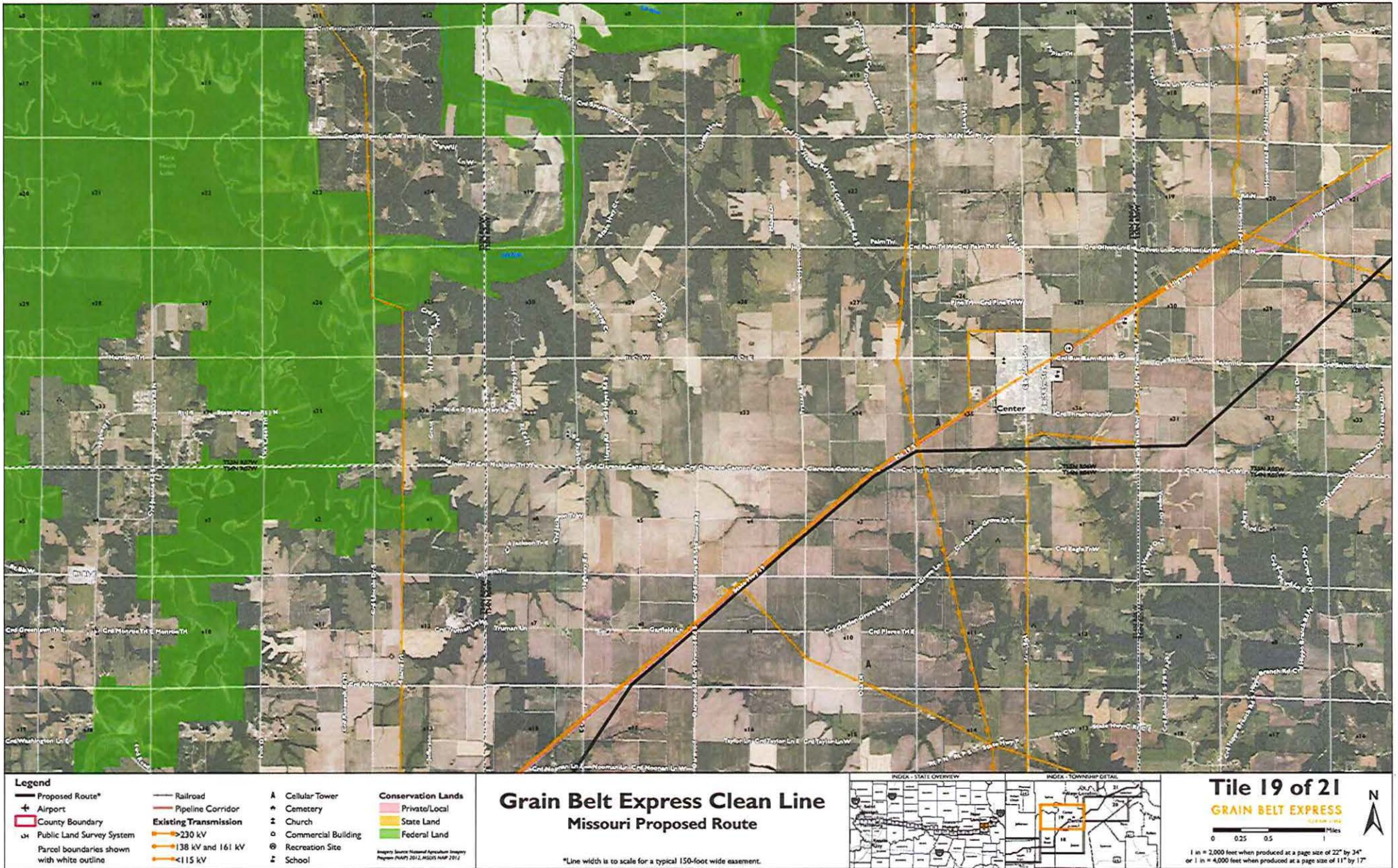
**Tile 18 of 21**

**GRAIN BELT EXPRESS**

1 in = 2,000 feet when produced at a page size of 22" by 34"  
or 1 in = 4,000 feet when produced at a page size of 11" by 17"

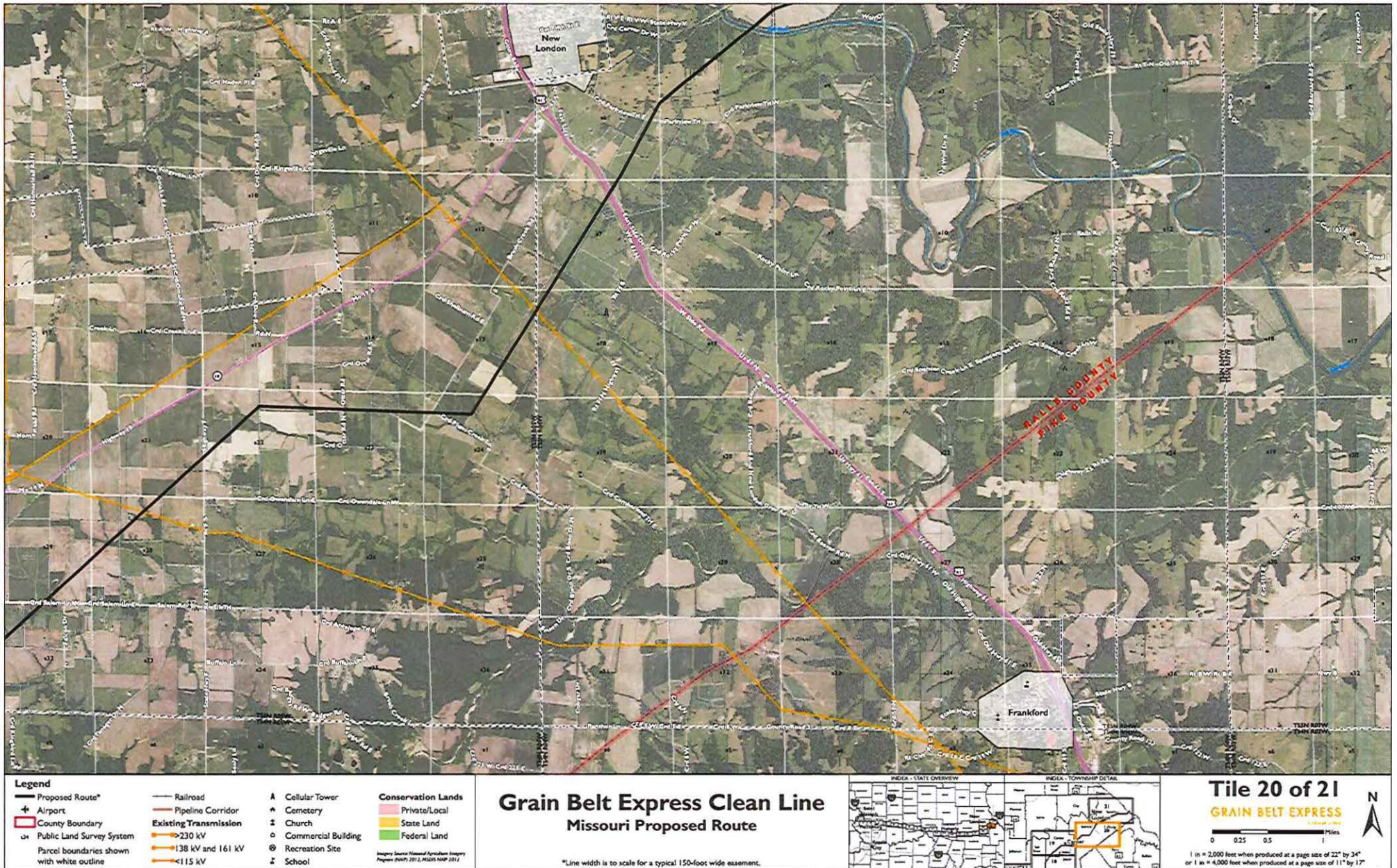


**This map depicts the proposed route as of March 26, 2014 and is subject to change. Modifications may result from landowner consultation, final engineering and design, environmental permitting, and other surveying results.**





**This map depicts the proposed route as of March 26, 2014 and is subject to change. Modifications may result from landowner consultation, final engineering and design, environmental permitting, and other surveying results.**





**This map depicts the proposed route as of March 26, 2014 and is subject to change. Modifications may result from landowner consultation, final engineering and design, environmental permitting, and other surveying results.**

