

**BEFORE THE PUBLIC SERVICE COMMISSION  
OF THE STATE OF MISSOURI**

In the Matter of a Recommendation )	
Concerning the Surcharge for Deaf Relay )	
Service and Equipment Distribution Program )	Case No. TO-2005-0308
Fund. )	

**STAFF RESPONSE TO FOURTH ORDER DIRECTING FILING  
AND STAFF MOTION TO SUPPLEMENT RECORD**

**COMES NOW** the Staff of the Missouri Public Service Commission and for its response and motion states:

1. On May 27, 2005, the Commission directed the Staff to file a chart regarding certain additional scenarios:

The scenarios should be very similar to Exhibit 6, but should be based upon a September 2005 implementation of any surcharge increase. Like Exhibit 6 the chart should include information based upon freezing the distribution of CapTel phones on June 30, 2005, as well as scenarios for distributing an estimated 20 CapTel phones per month with 153 minutes, 175 minutes, and 200 minutes of usage per month.

2. The requested scenarios are presented as Exhibit 9.

3. During its Agenda on May 26, 2005, the Commission discussed the revenues and expenses of the Missouri Relay program fund. The Staff offers the attached Exhibit 10 to further demonstrate the recent history of the revenues and expenses of the program fund. Page 1 of Exhibit 10 shows that monthly total expenses [Traditional Relay + CapTel + Equipment Distribution + Central Services] and revenues [Total Receipts (Surcharge Income + Interest)] both show a slight downward trend. This graph shows that total expenses are greater than revenues. Table 1 on Page 2 of Exhibit 10 shows revenues and expenses and the resulting additions or subtractions to the fund balance for the past six months. Table 2 on Page 2 of

Exhibit 10 shows the total annual revenues and expenses and the resulting subtractions to the fund balance for March 2003 through February 2004 and for March 2004 through February 2005, the first two years after the most recent change in the Relay Surcharge was implemented in March 2003. Also, the Staff offers the attached Exhibit 11 which shows the average monthly interest received by the fund. Staff also offers the attached Exhibit 12 with scenarios based upon a September 2005 implementation of any surcharge increase with distribution of 10 CapTel phones per month with 153, 175 and 200 minutes of usage per month.

4. Section 209.259 RSMo directs the Commission to review the Relay Surcharge no more than annually. The Staff cautions that a \$0.13 surcharge implemented in September 2005 under a scenario distributing 20 CapTel phones per month with estimated usage of 153 minutes usage per phone per month results in an estimated balance in September 2006 of approximately \$193,000 (Exhibit 9, Page 1). Similarly, a \$0.13 surcharge implemented in September 2005 under a scenario distributing 10 CapTel phones per month, and with estimated usage of 175 minutes per month per phone results in an estimated balance in September 2006 of approximately \$236,000 (Exhibit 12, Page 3). By comparison, a typical month's expenditure is approximately \$425,000 (Exhibit 10, Page 2).

**WHEREFORE**, the Staff proposes to supplement the record.

Respectfully submitted,

DANA K. JOYCE  
General Counsel

/s/ William K. Haas

William K. Haas  
Deputy General Counsel  
Missouri Bar No. 28701

Attorney for the Staff of the  
Missouri Public Service Commission  
P. O. Box 360  
Jefferson City, MO 65102  
(573) 751-7510 (Telephone)  
(573) 751-9285 (Fax)  
william.haas@psc.mo.gov

### **Certificate of Service**

I hereby certify that copies of the foregoing have been mailed, hand-delivered, transmitted by facsimile or electronically mailed to all counsel of record this 2<sup>nd</sup> day of June, 2005.

/s/ William K. Haas

**Impact on Fund of Various Surcharges Imposed in September 2005 Assuming 153 Minutes Average CapTel Usage**

**Table 1**

Date	\$0.10	\$0.11	\$0.12	\$0.13	\$0.14	\$0.15
Mar-05	\$2,202,631.04					
Apr-05	\$2,083,735.23					
May-05	\$1,939,278.28					
Jun-05	\$1,752,396.07					
Jul-05	\$1,592,301.91					
Aug-05	\$1,424,802.58					
Sep-05	\$1,223,900.23	\$1,253,849.60	\$1,283,798.96	\$1,313,748.33	\$1,343,697.70	\$1,373,647.06
Oct-05	\$1,044,057.36	\$1,108,860.21	\$1,173,663.05	\$1,238,465.90	\$1,303,268.75	\$1,368,071.59
Nov-05	\$874,594.42	\$971,749.11	\$1,068,903.80	\$1,166,058.48	\$1,263,213.17	\$1,360,367.85
Dec-05	\$675,679.55	\$802,762.42	\$929,845.30	\$1,056,928.18	\$1,184,011.05	\$1,311,093.93
Jan-06	\$509,726.02	\$671,306.97	\$832,887.92	\$994,468.86	\$1,156,049.81	\$1,317,630.75
Feb-06	\$314,284.78	\$507,028.61	\$699,772.45	\$892,516.28	\$1,085,260.11	\$1,278,003.95
Mar-06	\$157,730.27	\$386,763.31	\$615,796.35	\$844,829.39	\$1,073,862.43	\$1,302,895.48
Apr-06	(\$30,340.93)	\$231,964.18	\$494,269.30	\$756,574.41	\$1,018,879.52	\$1,281,184.64
May-06	(\$248,249.14)	\$44,376.61	\$337,002.36	\$629,628.10	\$922,253.85	\$1,214,879.60
Jun-06	(\$435,241.48)	(\$109,770.41)	\$215,700.66	\$541,171.72	\$866,642.79	\$1,192,113.86
Jul-06	(\$652,596.68)	(\$294,490.13)	\$63,616.41	\$421,722.96	\$779,829.50	\$1,137,936.05
Aug-06	(\$867,219.55)	(\$478,429.54)	(\$89,639.54)	\$299,150.46	\$687,940.46	\$1,076,730.47
Sep-06	(\$1,071,254.03)	(\$649,578.44)	(\$227,902.85)	\$193,772.74	\$615,448.33	\$1,037,123.92
Oct-06	(\$1,309,503.54)	(\$855,631.99)	(\$401,760.44)	\$52,111.11	\$505,982.66	\$959,854.21
Nov-06	(\$1,527,963.87)	(\$1,043,280.93)	(\$558,597.99)	(\$73,915.04)	\$410,767.90	\$895,450.84
Dec-06	(\$1,728,438.93)	(\$1,210,645.36)	(\$692,851.79)	(\$175,058.22)	\$342,735.35	\$860,528.92
Jan-07	(\$1,954,688.11)	(\$1,405,022.26)	(\$855,356.40)	(\$305,690.55)	\$243,975.31	\$793,641.16
Feb-07	(\$2,181,500.42)	(\$1,600,499.28)	(\$1,019,498.14)	(\$438,497.00)	\$142,504.14	\$723,505.28
Mar-07	(\$2,415,993.18)	(\$1,803,271.93)	(\$1,190,550.68)	(\$577,829.43)	\$34,891.81	\$647,613.06
Apr-07	(\$2,652,184.87)	(\$2,007,611.79)	(\$1,363,038.71)	(\$718,465.63)	(\$73,892.55)	\$570,680.53
May-07	(\$2,887,997.37)	(\$2,211,636.20)	(\$1,535,275.03)	(\$858,913.86)	(\$182,552.70)	\$493,808.47
Jun-07	(\$3,111,754.91)	(\$2,402,891.50)	(\$1,694,028.09)	(\$985,164.68)	(\$276,301.27)	\$432,562.15

CapTel Usage: 153 Minutes, 20 Additional Phones  
Refer to Chart A on Page 2

**Impact on Fund Balance of Various Surcharges under 153 Minutes CapTel Average Usage and 20 Additional CapTel Phones  
Distribututed each Month**

**Chart A**

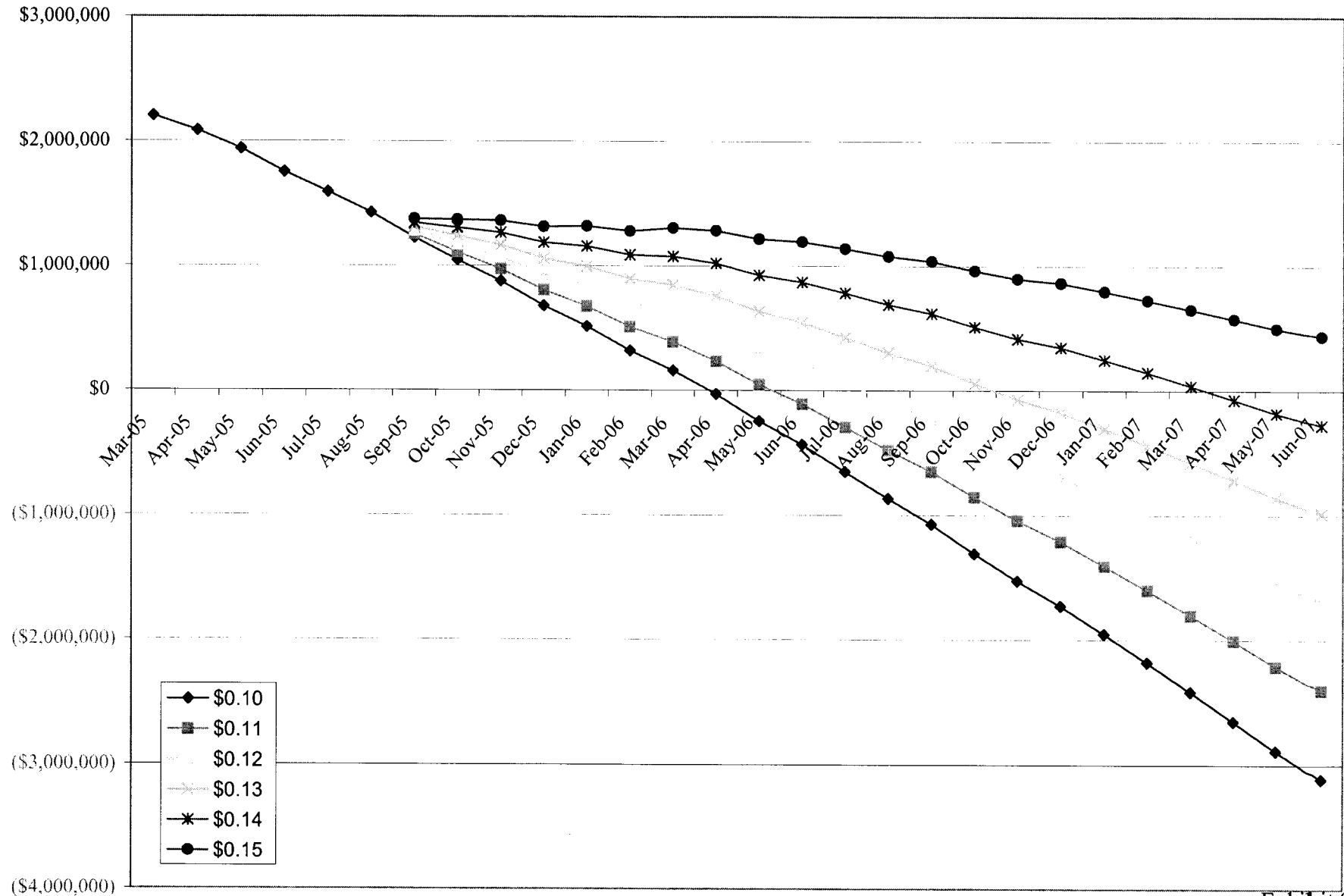


Exhibit 9

Chart A

Page 2

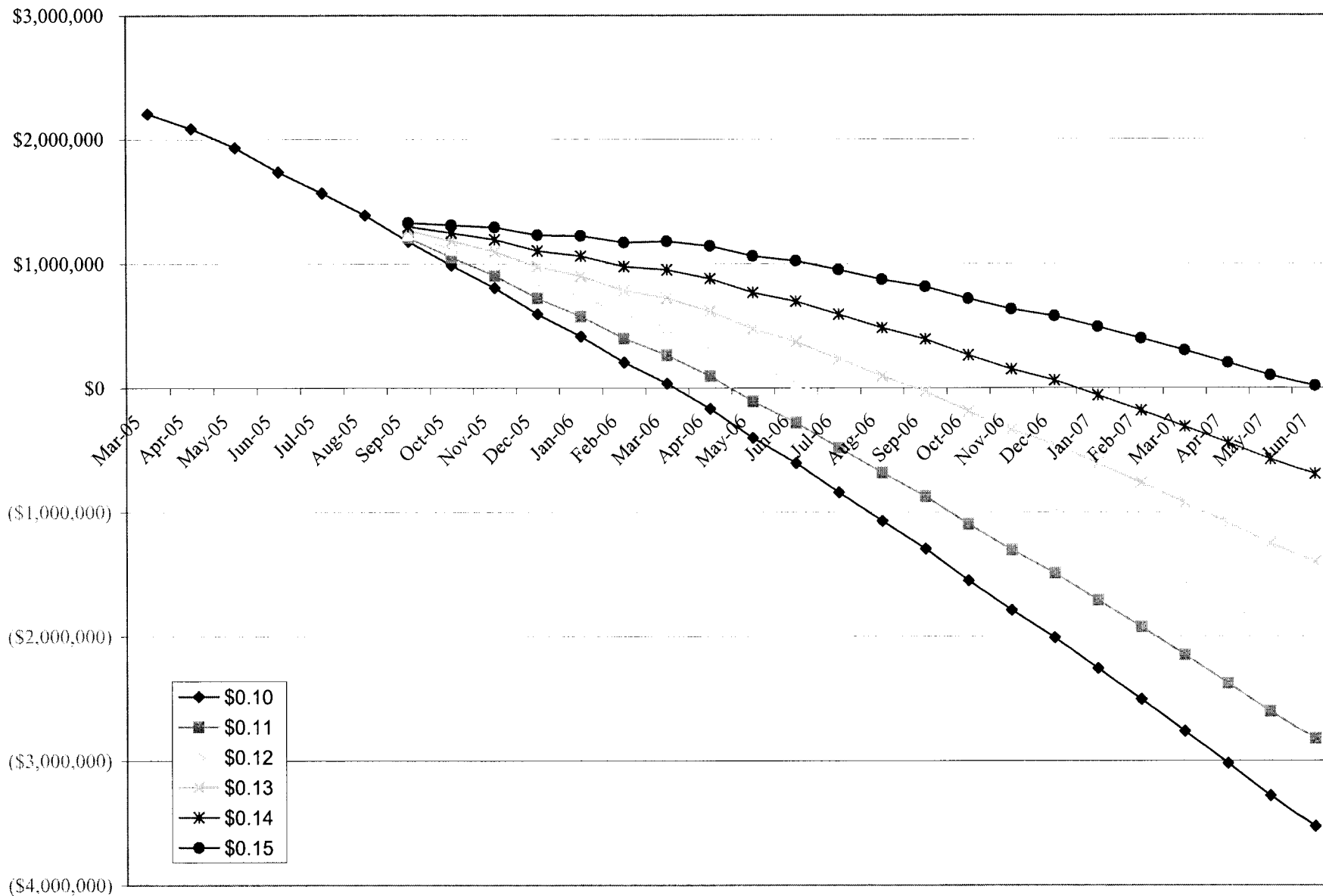
CapTel Usage: 153 Minutes, 20 Additional Phones  
Surcharge Imposed September 2005  
Refer to Table 1 on Page 1

**Impact on Fund of Various Surcharges Imposed in September 2005 Assuming 175 Minutes Average CapTel Usage**

**Table 2**

Date	\$0.10	\$0.11	\$0.12	\$0.13	\$0.14	\$0.15
Mar-05	\$2,202,631.04					
Apr-05	\$2,083,735.23					
May-05	\$1,931,207.58					
Jun-05	\$1,735,616.67					
Jul-05	\$1,566,175.81					
Aug-05	\$1,388,691.78					
Sep-05	\$1,177,166.73	\$1,207,116.10	\$1,237,065.46	\$1,267,014.83	\$1,296,964.20	\$1,326,913.56
Oct-05	\$986,063.16	\$1,050,866.01	\$1,115,668.85	\$1,180,471.70	\$1,245,274.55	\$1,310,077.39
Nov-05	\$804,701.52	\$901,856.21	\$999,010.90	\$1,096,165.58	\$1,193,320.27	\$1,290,474.95
Dec-05	\$593,249.95	\$720,332.82	\$847,415.70	\$974,498.58	\$1,101,581.45	\$1,228,664.33
Jan-06	\$414,121.72	\$575,702.67	\$737,283.62	\$898,864.56	\$1,060,445.51	\$1,222,026.45
Feb-06	\$204,867.78	\$397,611.61	\$590,355.45	\$783,099.28	\$975,843.11	\$1,168,586.95
Mar-06	\$33,862.57	\$262,895.61	\$491,928.65	\$720,961.69	\$949,994.73	\$1,179,027.78
Apr-06	(\$169,297.33)	\$93,007.78	\$355,312.90	\$617,618.01	\$879,923.12	\$1,142,228.24
May-06	(\$402,932.24)	(\$110,306.49)	\$182,319.26	\$474,945.00	\$767,570.75	\$1,060,196.50
Jun-06	(\$606,289.28)	(\$280,818.21)	\$44,652.86	\$370,123.92	\$695,594.99	\$1,021,066.06
Jul-06	(\$840,647.18)	(\$482,540.63)	(\$124,434.09)	\$233,672.46	\$591,779.00	\$949,885.55
Aug-06	(\$1,072,910.75)	(\$684,120.74)	(\$295,330.74)	\$93,459.26	\$482,249.26	\$871,039.27
Sep-06	(\$1,295,223.93)	(\$873,548.34)	(\$451,872.75)	(\$30,197.16)	\$391,478.43	\$813,154.02
Oct-06	(\$1,552,390.14)	(\$1,098,518.59)	(\$644,647.04)	(\$190,775.49)	\$263,096.06	\$716,967.61
Nov-06	(\$1,790,405.17)	(\$1,305,722.23)	(\$821,039.29)	(\$336,356.34)	\$148,326.60	\$633,009.54
Dec-06	(\$2,011,072.93)	(\$1,493,279.36)	(\$975,485.79)	(\$457,692.22)	\$60,101.35	\$577,894.92
Jan-07	(\$2,258,152.81)	(\$1,708,486.96)	(\$1,158,821.10)	(\$609,155.25)	(\$59,489.39)	\$490,176.46
Feb-07	(\$2,506,433.82)	(\$1,925,432.68)	(\$1,344,431.54)	(\$763,430.40)	(\$182,429.26)	\$398,571.88
Mar-07	(\$2,763,033.28)	(\$2,150,312.03)	(\$1,537,590.78)	(\$924,869.53)	(\$312,148.29)	\$300,572.96
Apr-07	(\$3,021,969.67)	(\$2,377,396.59)	(\$1,732,823.51)	(\$1,088,250.43)	(\$443,677.35)	\$200,895.73
May-07	(\$3,281,164.87)	(\$2,604,803.70)	(\$1,928,442.53)	(\$1,252,081.36)	(\$575,720.20)	\$100,640.97
Jun-07	(\$3,528,943.11)	(\$2,820,079.70)	(\$2,111,216.29)	(\$1,402,352.88)	(\$693,489.47)	\$15,373.95

**Impact on Fund of Various Surcharges Imposed in September 2005 Assuming 175 Minutes Average CapTel Usage**  
**Chart B**



CapTel Usage: 175 Minutes, 20 Additional Phones  
 Surcharge Imposed September 2005  
 Refer to Table 2 on Page 3

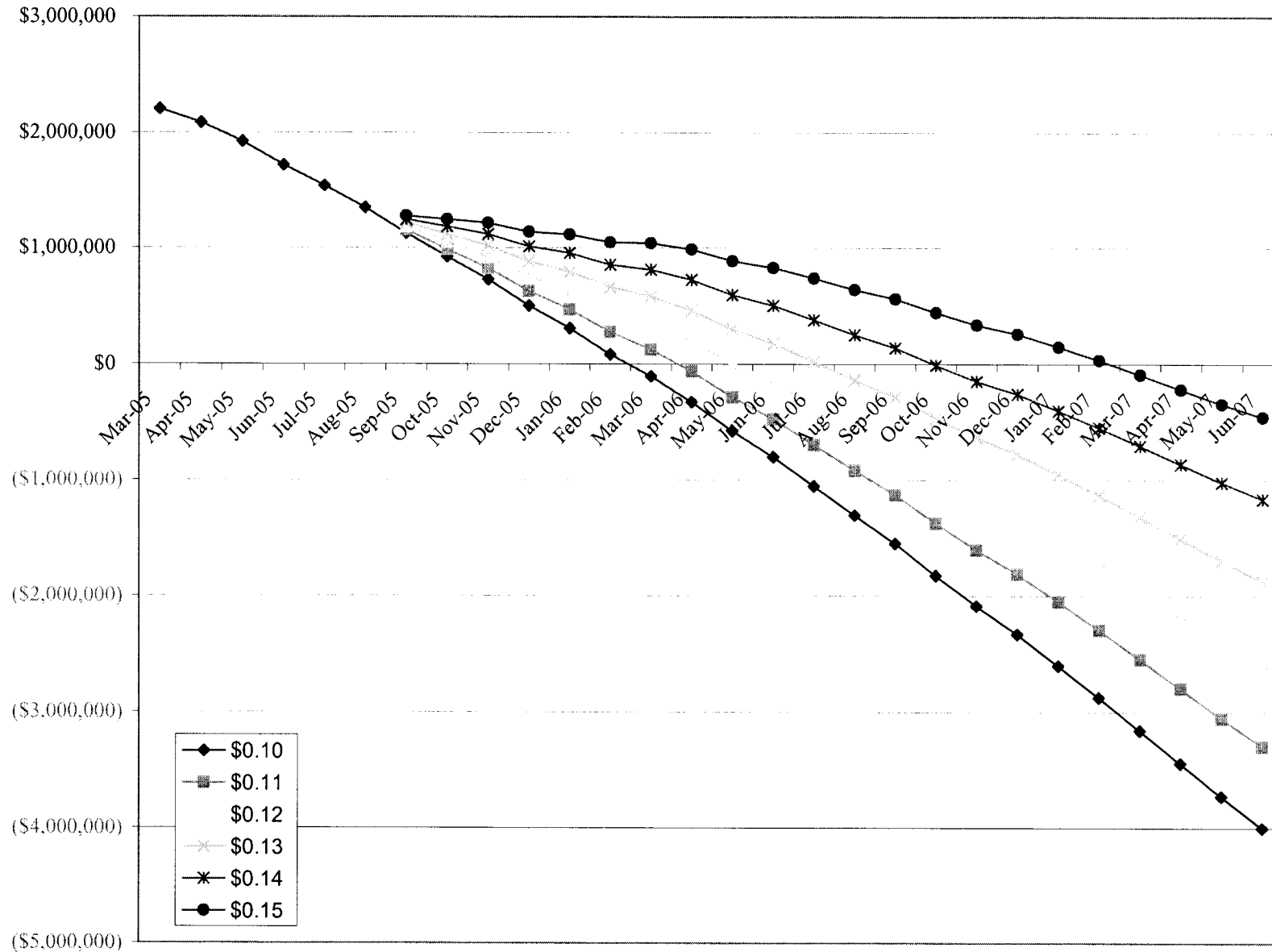
**Impact on Fund of Various Surcharges Imposed in September 2005 Assuming 200 Minutes Average CapTel Usage**

**Table 3**

Date	\$0.10	\$0.11	\$0.12	\$0.13	\$0.14	\$0.15
Mar-05	\$2,202,631.04					
Apr-05	\$2,083,735.23					
May-05	\$1,922,036.33					
Jun-05	\$1,716,549.17					
Jul-05	\$1,536,487.06					
Aug-05	\$1,347,656.78					
Sep-05	\$1,124,060.48	\$1,154,009.85	\$1,183,959.21	\$1,213,908.58	\$1,243,857.95	\$1,273,807.31
Oct-05	\$920,160.66	\$984,963.51	\$1,049,766.35	\$1,114,569.20	\$1,179,372.05	\$1,244,174.89
Nov-05	\$725,277.77	\$822,432.46	\$919,587.15	\$1,016,741.83	\$1,113,896.52	\$1,211,051.20
Dec-05	\$499,579.95	\$626,662.82	\$753,745.70	\$880,828.58	\$1,007,911.45	\$1,134,994.33
Jan-06	\$305,480.47	\$467,061.42	\$628,642.37	\$790,223.31	\$951,804.26	\$1,113,385.20
Feb-06	\$80,530.28	\$273,274.11	\$466,017.95	\$658,761.78	\$851,505.61	\$1,044,249.45
Mar-06	(\$106,896.18)	\$122,136.86	\$351,169.90	\$580,202.94	\$809,235.98	\$1,038,269.03
Apr-06	(\$327,202.33)	(\$64,897.22)	\$197,407.90	\$459,713.01	\$722,018.12	\$984,323.24
May-06	(\$578,708.49)	(\$286,082.74)	\$6,543.01	\$299,168.75	\$591,794.50	\$884,420.25
Jun-06	(\$800,661.78)	(\$475,190.71)	(\$149,719.64)	\$175,751.42	\$501,222.49	\$826,693.56
Jul-06	(\$1,054,340.93)	(\$696,234.38)	(\$338,127.84)	\$19,978.71	\$378,085.25	\$736,191.80
Aug-06	(\$1,306,650.75)	(\$917,860.74)	(\$529,070.74)	(\$140,280.74)	\$248,509.26	\$637,299.27
Sep-06	(\$1,549,735.18)	(\$1,128,059.59)	(\$706,384.00)	(\$284,708.41)	\$136,967.18	\$558,642.77
Oct-06	(\$1,828,397.64)	(\$1,374,526.09)	(\$920,654.54)	(\$466,782.99)	(\$12,911.44)	\$440,960.11
Nov-06	(\$2,088,633.92)	(\$1,603,950.98)	(\$1,119,268.04)	(\$634,585.09)	(\$149,902.15)	\$334,780.79
Dec-06	(\$2,332,247.93)	(\$1,814,454.36)	(\$1,296,660.79)	(\$778,867.22)	(\$261,073.65)	\$256,719.92
Jan-07	(\$2,602,999.06)	(\$2,053,333.21)	(\$1,503,667.35)	(\$954,001.50)	(\$404,335.64)	\$145,330.21
Feb-07	(\$2,875,676.32)	(\$2,294,675.18)	(\$1,713,674.04)	(\$1,132,672.90)	(\$551,671.76)	\$29,329.38
Mar-07	(\$3,157,397.03)	(\$2,544,675.78)	(\$1,931,954.53)	(\$1,319,233.28)	(\$706,512.04)	(\$93,790.79)
Apr-07	(\$3,442,179.67)	(\$2,797,606.59)	(\$2,153,033.51)	(\$1,508,460.43)	(\$863,887.35)	(\$219,314.27)
May-07	(\$3,727,946.12)	(\$3,051,584.95)	(\$2,375,223.78)	(\$1,698,862.61)	(\$1,022,501.45)	(\$346,140.28)
Jun-07	(\$4,003,020.61)	(\$3,294,157.20)	(\$2,585,293.79)	(\$1,876,430.38)	(\$1,167,566.97)	(\$458,703.55)



**Impact on Fund Balance of Various Surcharges under 200 Minutes CapTel Average Usage and 20 Additional CapTel Phones  
Distributed Each Month  
Chart C**



CapTel Usage: 200 Minutes, 20 Additional Phones  
Surcharge Imposed September 2005  
Refer to Table 3 on Page 5

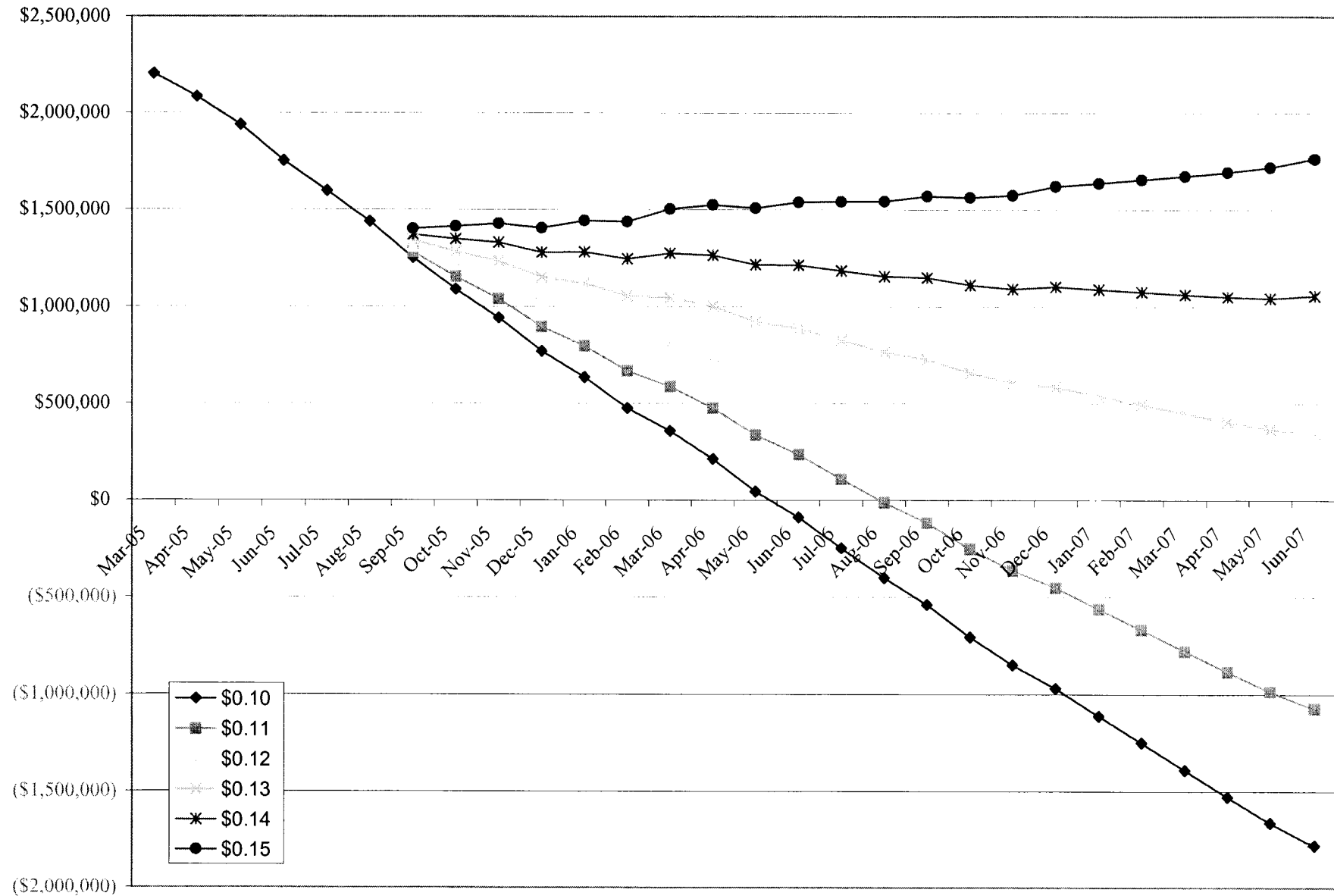
Exhibit 9  
Chart C  
Page 6

**Impact on Fund of Various Surcharges Imposed In September 2005 with CapTel Distribution Frozen  
on June 30, 2005 and 153 Minutes Residual Average CapTel Usage**

**Table 4**

Date	Surcharge Senarios with New Surcharge Implemented September 1, 2005					
	\$0.10	\$0.11	\$0.12	\$0.13	\$0.14	\$0.15
Mar-05	\$2,202,631.04					
Apr-05	\$2,083,735.23					
May-05	\$1,939,278.28					
Jun-05	\$1,752,396.07					
Jul-05	\$1,596,738.91					
Aug-05	\$1,438,113.58					
Sep-05	\$1,250,522.23	\$1,280,471.60	\$1,310,420.96	\$1,340,370.33	\$1,370,319.70	\$1,400,269.06
Oct-05	\$1,088,427.36	\$1,153,230.21	\$1,218,033.05	\$1,282,835.90	\$1,347,638.75	\$1,412,441.59
Nov-05	\$941,149.42	\$1,038,304.11	\$1,135,458.80	\$1,232,613.48	\$1,329,768.17	\$1,426,922.85
Dec-05	\$768,856.55	\$895,939.42	\$1,023,022.30	\$1,150,105.18	\$1,277,188.05	\$1,404,270.93
Jan-06	\$633,962.02	\$795,542.97	\$957,123.92	\$1,118,704.86	\$1,280,285.81	\$1,441,866.75
Feb-06	\$474,016.78	\$666,760.61	\$859,504.45	\$1,052,248.28	\$1,244,992.11	\$1,437,735.95
Mar-06	\$357,395.27	\$586,428.31	\$815,461.35	\$1,044,494.39	\$1,273,527.43	\$1,502,560.48
Apr-06	\$213,694.07	\$475,999.18	\$738,304.30	\$1,000,609.41	\$1,262,914.52	\$1,525,219.64
May-06	\$44,592.86	\$337,218.61	\$629,844.36	\$922,470.10	\$1,215,095.85	\$1,507,721.60
Jun-06	(\$89,155.48)	\$236,315.59	\$561,786.66	\$887,257.72	\$1,212,728.79	\$1,538,199.86
Jul-06	(\$248,829.68)	\$109,276.87	\$467,383.41	\$825,489.96	\$1,183,596.50	\$1,541,703.05
Aug-06	(\$401,334.55)	(\$12,544.54)	\$376,245.46	\$765,035.46	\$1,153,825.46	\$1,542,615.47
Sep-06	(\$538,814.03)	(\$117,138.44)	\$304,537.15	\$726,212.74	\$1,147,888.33	\$1,569,563.92
Oct-06	(\$706,071.54)	(\$252,199.99)	\$201,671.56	\$655,543.11	\$1,109,414.66	\$1,563,286.21
Nov-06	(\$849,102.87)	(\$364,419.93)	\$120,263.01	\$604,945.96	\$1,089,628.90	\$1,574,311.84
Dec-06	(\$969,711.93)	(\$451,918.36)	\$65,875.21	\$583,668.78	\$1,101,462.35	\$1,619,255.92
Jan-07	(\$1,111,658.11)	(\$561,992.26)	(\$12,326.40)	\$537,339.45	\$1,087,005.31	\$1,636,671.16
Feb-07	(\$1,249,730.42)	(\$668,729.28)	(\$87,728.14)	\$493,273.00	\$1,074,274.14	\$1,655,275.28
Mar-07	(\$1,391,046.18)	(\$778,324.93)	(\$165,603.68)	\$447,117.57	\$1,059,838.81	\$1,672,560.06
Apr-07	(\$1,529,623.87)	(\$885,050.79)	(\$240,477.71)	\$404,095.37	\$1,048,668.45	\$1,693,241.53
May-07	(\$1,663,385.37)	(\$987,024.20)	(\$310,663.03)	\$365,698.14	\$1,042,059.30	\$1,718,420.47
Jun-07	(\$1,780,654.91)	(\$1,071,791.50)	(\$362,928.09)	\$345,935.32	\$1,054,798.73	\$1,763,662.15

**Impact on Fund Balance of Various Surcharges under Frozen CapTel Distribution and 153 Minutes Residual Average CapTel Usage**  
**Chart D**



CapTel Usage: 153 Minutes Residual Usage, Distribution Frozen June 30, 2005  
 Surcharge Imposed September 2005  
 Refer to Table 4 on Page 7

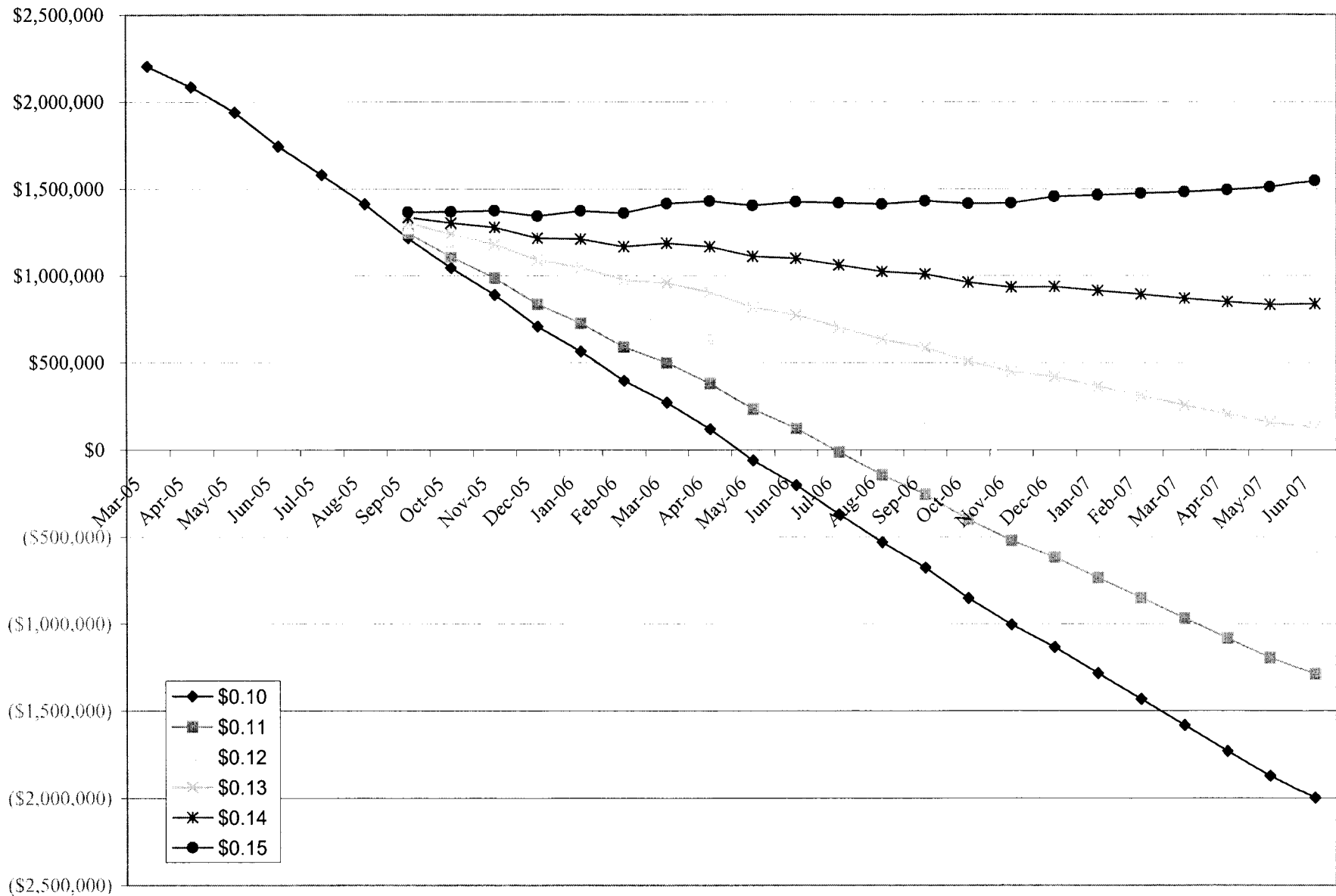
Exhibit 9  
 Chart D  
 Page 8

**Impact on Fund of Various Surcharges Imposed in September 2005 with CapTel Distribution Frozen  
On June 30, 2005 and 175 Minutes Residual Average CapTel Usage**

**Table 5**

Date	Surcharge Senarios with New Surcharge Implemented September 1, 2005					
	\$0.10	\$0.11	\$0.12	\$0.13	\$0.14	\$0.15
Mar-05	\$2,202,631.04					
Apr-05	\$2,083,735.23					
May-05	\$1,939,278.28					
Jun-05	\$1,743,687.37					
Jul-05	\$1,579,321.51					
Aug-05	\$1,411,987.48					
Sep-05	\$1,215,687.43	\$1,245,636.80	\$1,275,586.16	\$1,305,535.53	\$1,335,484.90	\$1,365,434.26
Oct-05	\$1,044,883.86	\$1,109,686.71	\$1,174,489.55	\$1,239,292.40	\$1,304,095.25	\$1,368,898.09
Nov-05	\$888,897.22	\$986,051.91	\$1,083,206.60	\$1,180,361.28	\$1,277,515.97	\$1,374,670.65
Dec-05	\$707,895.65	\$834,978.52	\$962,061.40	\$1,089,144.28	\$1,216,227.15	\$1,343,310.03
Jan-06	\$564,292.42	\$725,873.37	\$887,454.32	\$1,049,035.26	\$1,210,616.21	\$1,372,197.15
Feb-06	\$395,638.48	\$588,382.31	\$781,126.15	\$973,869.98	\$1,166,613.81	\$1,359,357.65
Mar-06	\$270,308.27	\$499,341.31	\$728,374.35	\$957,407.39	\$1,186,440.43	\$1,415,473.48
Apr-06	\$117,898.37	\$380,203.48	\$642,508.60	\$904,813.71	\$1,167,118.82	\$1,429,423.94
May-06	(\$59,911.54)	\$232,714.21	\$525,339.96	\$817,965.70	\$1,110,591.45	\$1,403,217.20
Jun-06	(\$202,368.58)	\$123,102.49	\$448,573.56	\$774,044.62	\$1,099,515.69	\$1,424,986.76
Jul-06	(\$370,751.48)	(\$12,644.93)	\$345,461.61	\$703,568.16	\$1,061,674.70	\$1,419,781.25
Aug-06	(\$531,965.05)	(\$143,175.04)	\$245,614.96	\$634,404.96	\$1,023,194.96	\$1,411,984.97
Sep-06	(\$678,153.23)	(\$256,477.64)	\$165,197.95	\$586,873.54	\$1,008,549.13	\$1,430,224.72
Oct-06	(\$854,119.44)	(\$400,247.89)	\$53,623.66	\$507,495.21	\$961,366.76	\$1,415,238.31
Nov-06	(\$1,005,859.47)	(\$521,176.53)	(\$36,493.59)	\$448,189.36	\$932,872.30	\$1,417,555.24
Dec-06	(\$1,135,177.23)	(\$617,383.66)	(\$99,590.09)	\$418,203.48	\$935,997.05	\$1,453,790.62
Jan-07	(\$1,285,832.11)	(\$736,166.26)	(\$186,500.40)	\$363,165.45	\$912,831.31	\$1,462,497.16
Feb-07	(\$1,432,613.12)	(\$851,611.98)	(\$270,610.84)	\$310,390.30	\$891,391.44	\$1,472,392.58
Mar-07	(\$1,582,637.58)	(\$969,916.33)	(\$357,195.08)	\$255,526.17	\$868,247.41	\$1,480,968.66
Apr-07	(\$1,729,923.97)	(\$1,085,350.89)	(\$440,777.81)	\$203,795.27	\$848,368.35	\$1,492,941.43
May-07	(\$1,872,394.17)	(\$1,196,033.00)	(\$519,671.83)	\$156,689.34	\$833,050.50	\$1,509,411.67
Jun-07	(\$1,998,372.41)	(\$1,289,509.00)	(\$580,645.59)	\$128,217.82	\$837,081.23	\$1,545,944.65

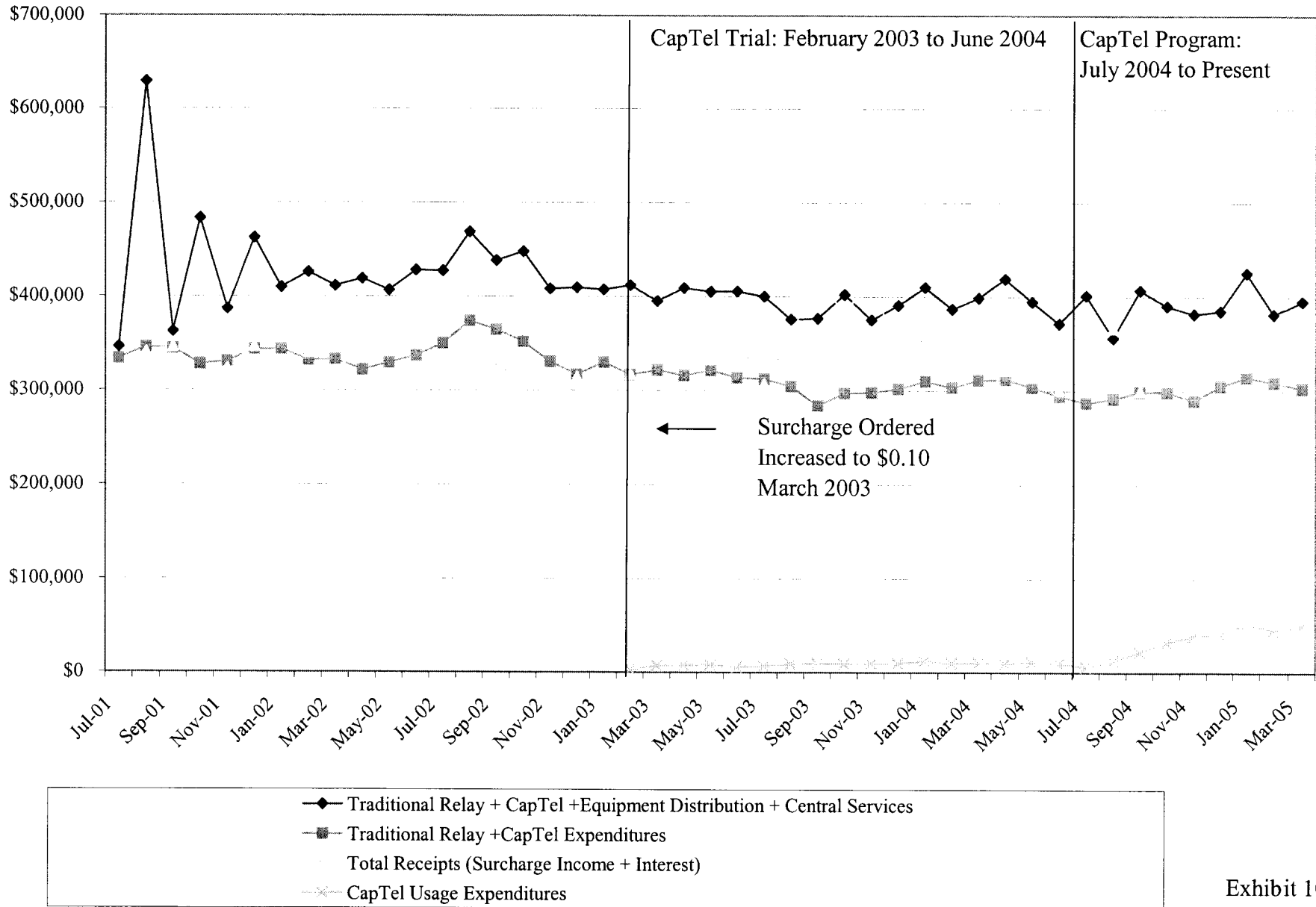
**Impact on Fund Balance of Various Surcharges under Frozen CapTel Distribution and 175 Minutes Residual Average CapTel Usage**  
**Chart E**



CapTel Usage: 175 Minutes Residual Usage, Distribution Frozen June 30, 2005  
 Surcharge Imposed September 2005  
 Refer to Table 5 on Page 9

Exhibit 9  
 Chart E  
 Page 10

**Relay Fund Expenditures and Receipts: July 2001-March 2005**  
**Chart A**



**Analysis of Fund Income and Expenditures for the Period November 2004-April 2005**

**Table 1**

**Refer to Exhibit 10 Chart A**

	April 2005	March 2005	February 2005	January 2005	December 2004	November 2004
Income (Surcharge Income + Interest)	\$514,210.31	\$109,273.51	\$301,546.20	\$318,674.74	\$348,237.56	\$266,936.02
Total Expenditures (Traditional Relay Usage Expenditures + CapTel Usage Expenditures + Equipment Distribution Expenditures + Central Services Cost Allocation Assessment)	\$437,249.4200	\$427,581.6500	\$399,310.1300	\$452,922.7400	\$451,411.7500	\$412,494.7400
Additions to or (Subtractions) from Fund	\$76,960.89	(\$318,308.14)	(\$97,763.93)	(\$134,248.00)	(\$103,174.19)	(\$145,558.72)
Estimated Additional Surcharge Necessary to Cover Shortage	(\$0.0257)	\$0.1061	\$0.0326	\$0.0447	\$0.0344	\$0.0485
Equipment Distribution Program Expenditures	\$121,519.99	\$118,178.44	\$119,154.77	\$118,018.21	\$153,870.05	\$120,172.78
Traditional Relay + CapTel Expenditures	\$298,780.43	\$309,403.21	\$280,155.36	\$318,219.53	\$297,541.70	\$292,321.96
Central Services Cost Allocation (Fund charged quarterly)	\$16,949.00	\$0.00	\$0.00	\$16,685.00	\$0.00	\$0.00
Total Expenditures	\$437,249.42	\$427,581.65	\$399,310.13	\$452,922.74	\$451,411.75	\$412,494.74

**Annual Analysis of Fund Income and Expenditures for the Periods March 2003-February 2004 and March 2004-February 2005**

**Table 2**

	Mar-03-Feb 04	Mar '04-Feb '05
Annual Income (Surcharge + Interest)	\$3,765,715.33	\$3,894,421.37
Total Fund Expenditures	\$5,121,446.50	\$5,050,596.66
Annual Additions to or (Subtractions) from Fund	(\$1,355,731.17)	(\$1,156,175.29)
Estimated Additional Monthly Surcharge Necessary to Cover Shortage	\$0.0377	\$0.0321
Annual Equipment Distribution Program Expenditures	\$1,420,518.96	\$1,456,193.44
Annual Traditional Relay + CapTel Usage Expenditures	\$3,666,003.54	\$3,526,347.22
Central Services Cost Allocation Program Assessments	\$34,924.00	\$68,056.00
Total Fund Expenditures	\$5,121,446.50	\$5,050,596.66

Average Monthly Interest Receipt for Fiscal Years 1999-2005

Months	FY	Average Monthly Interest Receipt
Jul/98-Jun/99	FY'99	\$28,445.35
Jul/99-Jun/00	FY'00	\$31,967.87
Jul/00-Jun/01	FY'01	\$38,524.19
Jul/01-Jun/02	FY'02	\$23,222.72
Jul/02-Jun/03	FY'03	\$10,220.98
Jul/03-Jun-04	FY'04	\$6,172.68
Jul-04-Apr/05	FY'05	\$5,325.75

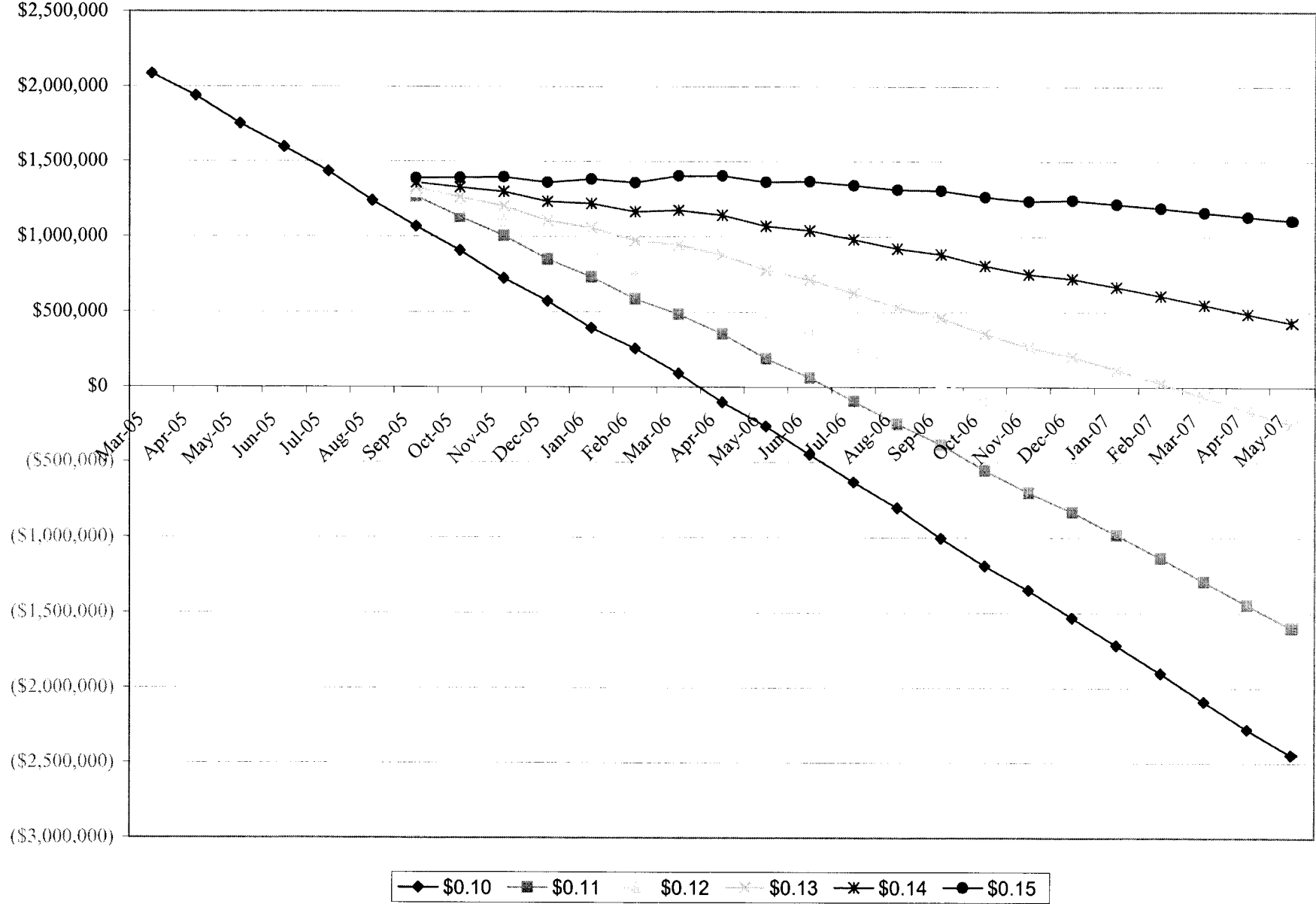


**Impact on Fund of Various Surcharges Imposed in September 2005 Assuming Distribution of 10 CapTel Phones per Month at 153  
Minutes Average Usage**

**Table 1**

	\$0.10	\$0.11	\$0.12	\$0.13	\$0.14	\$0.15
Mar-05	\$2,202,631.04					
Apr-05	\$2,083,735.23					
May-05	\$1,939,278.28					
Jun-05	\$1,752,396.07					
Jul-05	\$1,594,520.41					
Aug-05	\$1,431,458.08					
Sep-05	\$1,237,211.23	\$1,267,160.60	\$1,297,109.96	\$1,327,059.33	\$1,357,008.70	\$1,386,958.06
Oct-05	\$1,066,242.36	\$1,131,045.21	\$1,195,848.05	\$1,260,650.90	\$1,325,453.75	\$1,390,256.59
Nov-05	\$907,871.92	\$1,005,026.61	\$1,102,181.30	\$1,199,335.98	\$1,296,490.67	\$1,393,645.35
Dec-05	\$722,268.05	\$849,350.92	\$976,433.80	\$1,103,516.68	\$1,230,599.55	\$1,357,682.43
Jan-06	\$571,844.02	\$733,424.97	\$895,005.92	\$1,056,586.86	\$1,218,167.81	\$1,379,748.75
Feb-06	\$394,150.78	\$586,894.61	\$779,638.45	\$972,382.28	\$1,165,126.11	\$1,357,869.95
Mar-06	\$257,562.77	\$486,595.81	\$715,628.85	\$944,661.89	\$1,173,694.93	\$1,402,727.98
Apr-06	\$91,676.57	\$353,981.68	\$616,286.80	\$878,591.91	\$1,140,897.02	\$1,403,202.14
May-06	(\$101,828.14)	\$190,797.61	\$483,423.36	\$776,049.10	\$1,068,674.85	\$1,361,300.60
Jun-06	(\$262,198.48)	\$63,272.59	\$388,743.66	\$714,214.72	\$1,039,685.79	\$1,365,156.86
Jul-06	(\$450,713.18)	(\$92,606.63)	\$265,499.91	\$623,606.46	\$981,713.00	\$1,339,819.55
Aug-06	(\$634,277.05)	(\$245,487.04)	\$143,302.96	\$532,092.96	\$920,882.96	\$1,309,672.97
Sep-06	(\$805,034.03)	(\$383,358.44)	\$38,317.15	\$459,992.74	\$881,668.33	\$1,303,343.92
Oct-06	(\$1,007,787.54)	(\$553,915.99)	(\$100,044.44)	\$353,827.11	\$807,698.66	\$1,261,570.21
Nov-06	(\$1,188,533.37)	(\$703,850.43)	(\$219,167.49)	\$265,515.46	\$750,198.40	\$1,234,881.34
Dec-06	(\$1,349,075.43)	(\$831,281.86)	(\$313,488.29)	\$204,305.28	\$722,098.85	\$1,239,892.42
Jan-07	(\$1,533,173.11)	(\$983,507.26)	(\$433,841.40)	\$115,824.45	\$665,490.31	\$1,215,156.16
Feb-07	(\$1,715,615.42)	(\$1,134,614.28)	(\$553,613.14)	\$27,388.00	\$608,389.14	\$1,189,390.28
Mar-07	(\$1,903,519.68)	(\$1,290,798.43)	(\$678,077.18)	(\$65,355.93)	\$547,365.31	\$1,160,086.56
Apr-07	(\$2,090,904.37)	(\$1,446,331.29)	(\$801,758.21)	(\$157,185.13)	\$487,387.95	\$1,131,961.03
May-07	(\$2,275,691.37)	(\$1,599,330.20)	(\$922,969.03)	(\$246,607.86)	\$429,753.30	\$1,106,114.47
Jun-07	(\$2,446,204.91)	(\$1,737,341.50)	(\$1,028,478.09)	(\$319,614.68)	\$389,248.73	\$1,098,112.15

Impact on Fund of Various Surcharges Imposed In September 2005 Assuming Distribution of 10 CapTel Phones Per Month at 153 Minutes Average Usage  
Minutes Average Usage  
Chart A



CapTel Usage: 153 Minutes; 10 Additional Phones  
September 2005 Implementation  
Refer to Table 1 on Page 1

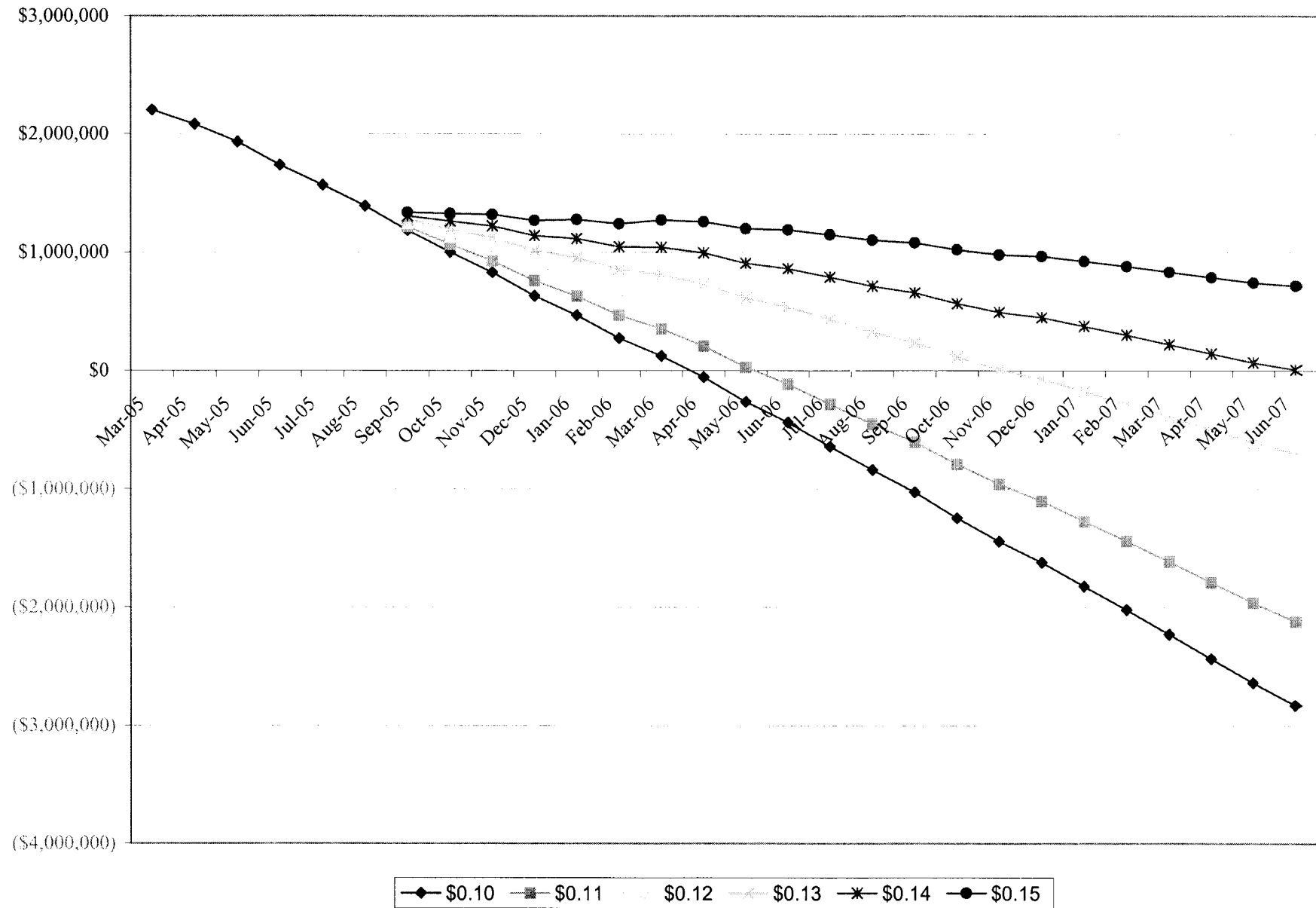
**Impact on Fund of Various Surcharges Imposed in September 2005 Assuming Distribution of 10 CapTel Phones Per Month at 175  
Minutes Average Usage  
Table 2**

	\$0.10	\$0.11	\$0.12	\$0.13	\$0.14	\$0.15
Mar-05	\$2,202,631.04					
Apr-05	\$2,083,735.23					
May-05	\$1,931,207.58					
Jun-05	\$1,735,616.67					
Jul-05	\$1,566,175.81					
Aug-05	\$1,391,229.28					
Sep-05	\$1,184,779.23	\$1,214,728.60	\$1,244,677.96	\$1,274,627.33	\$1,304,576.70	\$1,334,526.06
Oct-05	\$1,001,288.16	\$1,066,091.01	\$1,130,893.85	\$1,195,696.70	\$1,260,499.55	\$1,325,302.39
Nov-05	\$830,076.52	\$927,231.21	\$1,024,385.90	\$1,121,540.58	\$1,218,695.27	\$1,315,849.95
Dec-05	\$631,312.45	\$758,395.32	\$885,478.20	\$1,012,561.08	\$1,139,643.95	\$1,266,726.83
Jan-06	\$467,409.22	\$628,990.17	\$790,571.12	\$952,152.06	\$1,113,733.01	\$1,275,313.95
Feb-06	\$275,917.78	\$468,661.61	\$661,405.45	\$854,149.28	\$1,046,893.11	\$1,239,636.95
Mar-06	\$125,212.57	\$354,245.61	\$583,278.65	\$812,311.69	\$1,041,344.73	\$1,270,377.78
Apr-06	(\$55,109.83)	\$207,195.28	\$469,500.40	\$731,805.51	\$994,110.62	\$1,256,415.74
May-06	(\$263,369.74)	\$29,256.01	\$321,881.76	\$614,507.50	\$907,133.25	\$1,199,759.00
Jun-06	(\$438,814.28)	(\$113,343.21)	\$212,127.86	\$537,598.92	\$863,069.99	\$1,188,541.06
Jul-06	(\$642,722.18)	(\$284,615.63)	\$73,490.91	\$431,597.46	\$789,704.00	\$1,147,810.55
Aug-06	(\$841,998.25)	(\$453,208.24)	(\$64,418.24)	\$324,371.76	\$713,161.76	\$1,101,951.77
Sep-06	(\$1,028,786.43)	(\$607,110.84)	(\$185,435.25)	\$236,240.34	\$657,915.93	\$1,079,591.52
Oct-06	(\$1,247,890.14)	(\$794,018.59)	(\$340,147.04)	\$113,724.51	\$567,596.06	\$1,021,467.61
Nov-06	(\$1,445,305.17)	(\$960,622.23)	(\$475,939.29)	\$8,743.66	\$493,426.60	\$978,109.54
Dec-06	(\$1,622,835.43)	(\$1,105,041.86)	(\$587,248.29)	(\$69,454.72)	\$448,338.85	\$966,132.42
Jan-07	(\$1,824,240.31)	(\$1,274,574.46)	(\$724,908.60)	(\$175,242.75)	\$374,423.11	\$924,088.96
Feb-07	(\$2,024,308.82)	(\$1,443,307.68)	(\$862,306.54)	(\$281,305.40)	\$299,695.74	\$880,696.88
Mar-07	(\$2,230,158.28)	(\$1,617,437.03)	(\$1,004,715.78)	(\$391,994.53)	\$220,726.71	\$833,447.96
Apr-07	(\$2,435,807.17)	(\$1,791,234.09)	(\$1,146,661.01)	(\$502,087.93)	\$142,485.15	\$787,058.23
May-07	(\$2,639,177.37)	(\$1,962,816.20)	(\$1,286,455.03)	(\$610,093.86)	\$66,267.30	\$742,628.47
Jun-07	(\$2,828,593.11)	(\$2,119,729.70)	(\$1,410,866.29)	(\$702,002.88)	\$6,860.53	\$715,723.95

CapTel Usage:175 Minutes; 10 Additional Phones  
September 2005 Implementation  
Refer to Chart B on Page 4

Exhibit 12  
Table 2  
Page 3

**Impact on Fund of Various Surcharges Imposed in September Assuming Distribution of 10 CapTel Phones per Month at 175 Minutes  
Average Usage  
Chart B**



CapTel Usage: 175 Minutes; 10 Additional Phones  
September 2005 Implementation  
Refer to Table 2 on Page 3

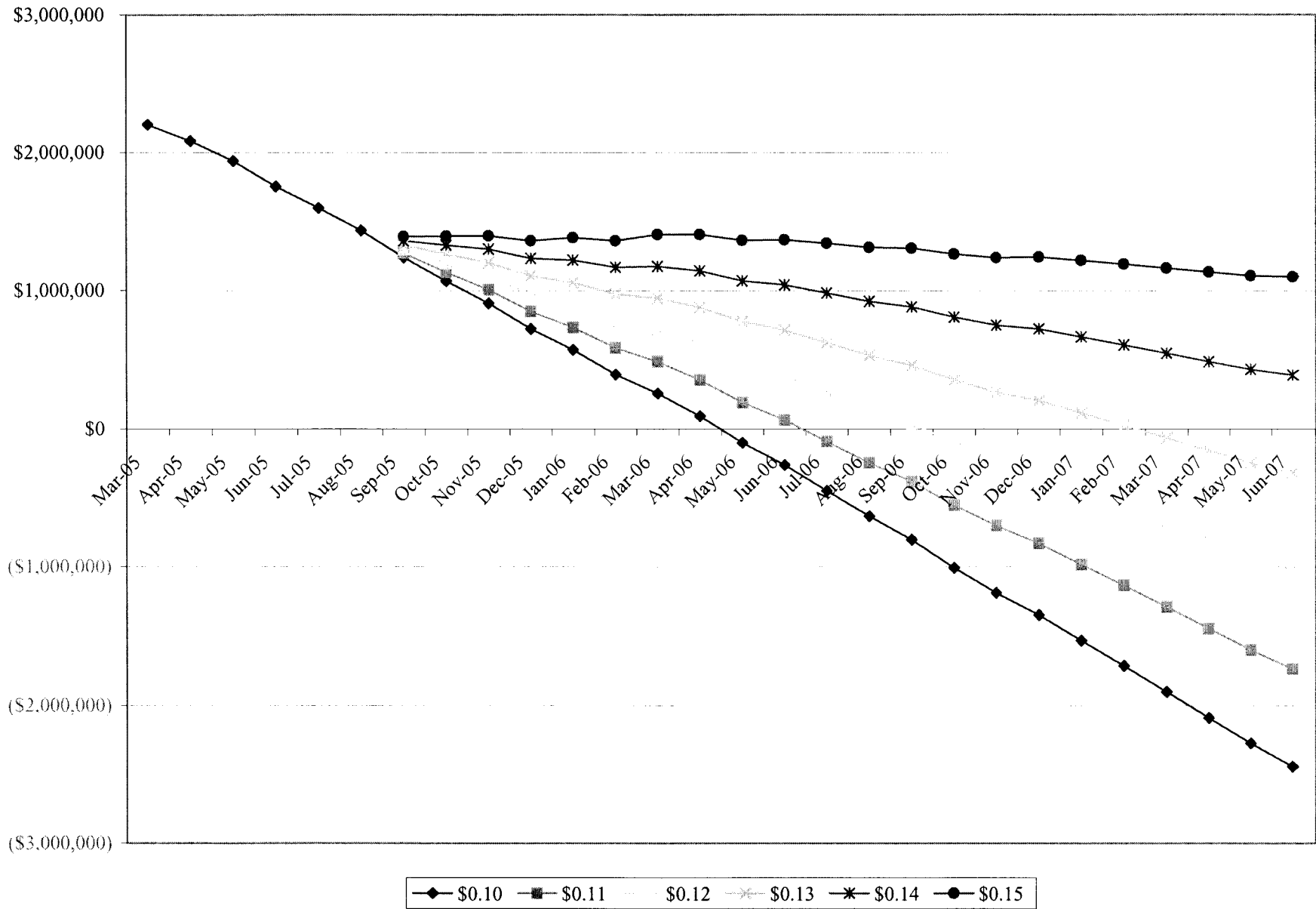
**Impact on Fund of Various Surcharges Imposed in September 2005 Assuming Distribution of 10 CapTel Phones Per Month at 200  
Minutes Average Usage  
Table 3**

	\$0.10	\$0.11	\$0.12	\$0.13	\$0.14	\$0.15
Mar-05	\$2,202,631.04					
Apr-05	\$2,083,735.23					
May-05	\$1,939,278.28					
Jun-05	\$1,752,396.07					
Jul-05	\$1,594,520.41					
Aug-05	\$1,431,458.08					
Sep-05	\$1,237,211.23	\$1,267,160.60	\$1,297,109.96	\$1,327,059.33	\$1,357,008.70	\$1,386,958.06
Oct-05	\$1,066,242.36	\$1,131,045.21	\$1,195,848.05	\$1,260,650.90	\$1,325,453.75	\$1,390,256.59
Nov-05	\$907,871.92	\$1,005,026.61	\$1,102,181.30	\$1,199,335.98	\$1,296,490.67	\$1,393,645.35
Dec-05	\$722,268.05	\$849,350.92	\$976,433.80	\$1,103,516.68	\$1,230,599.55	\$1,357,682.43
Jan-06	\$571,844.02	\$733,424.97	\$895,005.92	\$1,056,586.86	\$1,218,167.81	\$1,379,748.75
Feb-06	\$394,150.78	\$586,894.61	\$779,638.45	\$972,382.28	\$1,165,126.11	\$1,357,869.95
Mar-06	\$257,562.77	\$486,595.81	\$715,628.85	\$944,661.89	\$1,173,694.93	\$1,402,727.98
Apr-06	\$91,676.57	\$353,981.68	\$616,286.80	\$878,591.91	\$1,140,897.02	\$1,403,202.14
May-06	(\$101,828.14)	\$190,797.61	\$483,423.36	\$776,049.10	\$1,068,674.85	\$1,361,300.60
Jun-06	(\$262,198.48)	\$63,272.59	\$388,743.66	\$714,214.72	\$1,039,685.79	\$1,365,156.86
Jul-06	(\$450,713.18)	(\$92,606.63)	\$265,499.91	\$623,606.46	\$981,713.00	\$1,339,819.55
Aug-06	(\$634,277.05)	(\$245,487.04)	\$143,302.96	\$532,092.96	\$920,882.96	\$1,309,672.97
Sep-06	(\$805,034.03)	(\$383,358.44)	\$38,317.15	\$459,992.74	\$881,668.33	\$1,303,343.92
Oct-06	(\$1,007,787.54)	(\$553,915.99)	(\$100,044.44)	\$353,827.11	\$807,698.66	\$1,261,570.21
Nov-06	(\$1,188,533.37)	(\$703,850.43)	(\$219,167.49)	\$265,515.46	\$750,198.40	\$1,234,881.34
Dec-06	(\$1,349,075.43)	(\$831,281.86)	(\$313,488.29)	\$204,305.28	\$722,098.85	\$1,239,892.42
Jan-07	(\$1,533,173.11)	(\$983,507.26)	(\$433,841.40)	\$115,824.45	\$665,490.31	\$1,215,156.16
Feb-07	(\$1,715,615.42)	(\$1,134,614.28)	(\$553,613.14)	\$27,388.00	\$608,389.14	\$1,189,390.28
Mar-07	(\$1,903,519.68)	(\$1,290,798.43)	(\$678,077.18)	(\$65,355.93)	\$547,365.31	\$1,160,086.56
Apr-07	(\$2,090,904.37)	(\$1,446,331.29)	(\$801,758.21)	(\$157,185.13)	\$487,387.95	\$1,131,961.03
May-07	(\$2,275,691.37)	(\$1,599,330.20)	(\$922,969.03)	(\$246,607.86)	\$429,753.30	\$1,106,114.47
Jun-07	(\$2,446,204.91)	(\$1,737,341.50)	(\$1,028,478.09)	(\$319,614.68)	\$389,248.73	\$1,098,112.15

CapTel Usage: 200 Minutes, 20 Additional Phones  
September 2005 Implementation  
Refer to Chart C on Page 6

Exhibit 12  
Table 3  
Page 5

**Impact on Fund of Various Surcharges Imposed in September 2005 Assuming Distribtuion of 10 Additional CapTel Phones per Month at 200 Minutes Average Usage**  
**Chart C**



CapTel Usage: 200 Minutes; 10 Additional Phones  
 September Implementation  
 Refer to Table 3 on Page 5