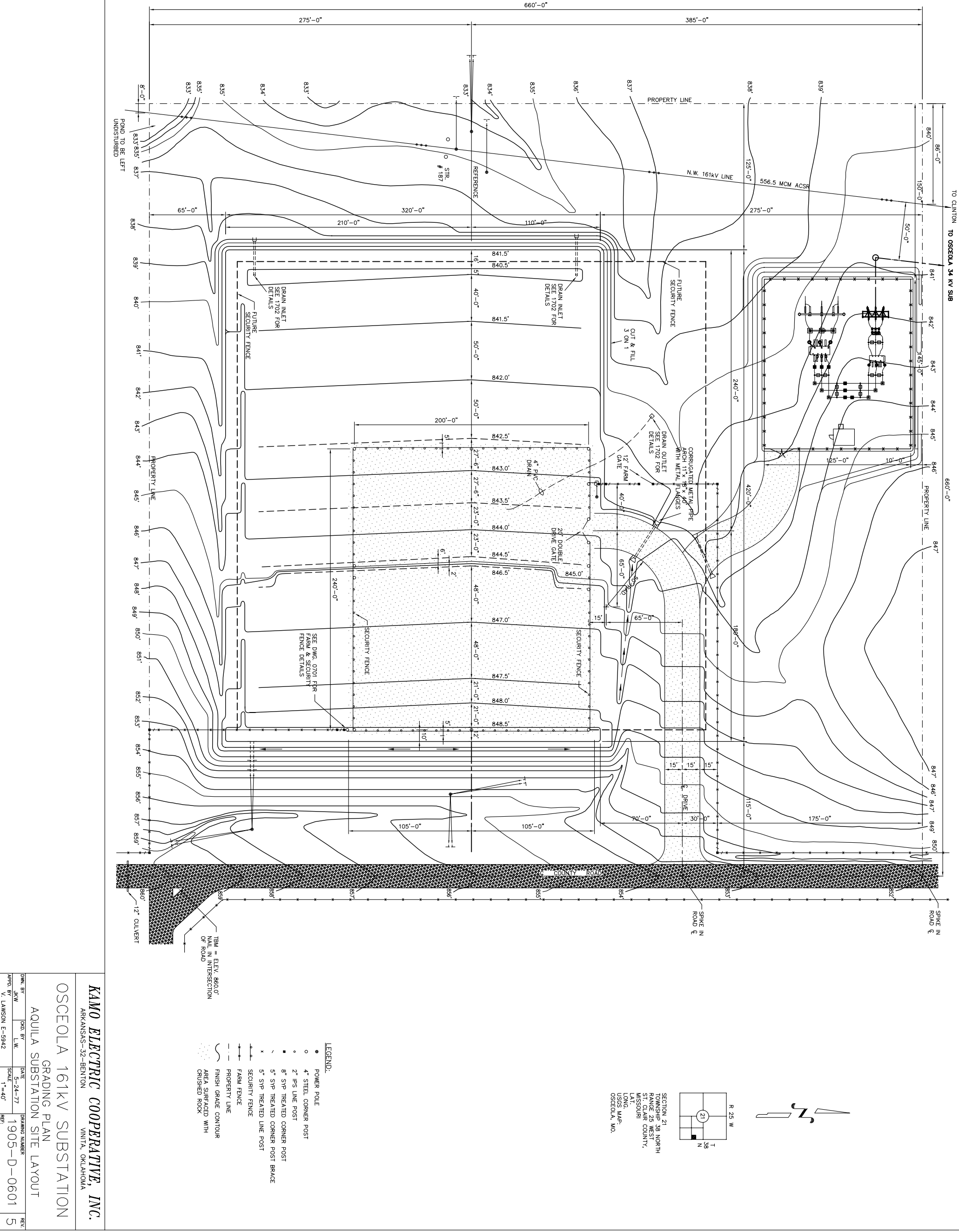


REV.	DWN BY	CKD BY
1	APPD BY	DATE
		8-1-78
FINAL RECORD.		
REV.	DWN BY	CKD BY
2	APPD BY	DATE
		11-11-82
FIELD UPDATE		
REV.	DWN BY	CKD BY
3	APPD BY	DATE
		4-14-86
ADDED ALTERNATE POWER SERVICE.		
REV.	DWN BY	CKD BY
4	APPD BY	DATE
		11-3-98
REDRAWN & RENUMBERED ON CAD ON NEW TITLE BLOCK, FORMERLY PART OF OSC-3.		
REV.	DWN BY	CKD BY
5	APPD BY	DATE
		2-22-99
EDITED TITLE BLOCK.		



KAMO ELECTRIC COOPERATIVE, INC.			
ARKANSAS-32-BENTON			
VINITA, OKLAHOMA			
OSCEOLA 161KV SUBSTATION			
GRADING PLAN			
AQUILA SUBSTATION SITE LAYOUT			
DWN BY	CKD BY	DATE	DRAWING NUMBER
JKW	LW	5-24-77	1905-D-0601
APPD BY		SCALE	REF.
V. LAMSON E-5942		1"=40'	
REV.			
5			