

**BEFORE THE PUBLIC SERVICE COMMISSION
OF THE STATE OF MISSOURI**

In the Matter of a Recommendation)
Concerning the Surcharge for Deaf Relay)
Service and Equipment Distribution Program)
Fund.)

Case No. TO-2005-0308

**STAFF MOTION TO SUPPLEMENT STAFF RESPONSE TO
FOURTH ORDER DIRECTING FILING**

COMES NOW the Staff of the Missouri Public Service Commission and for its motion states:

1. On June 2, 2005, the Staff filed its Staff Response to Fourth Order Directing Filing and Staff Motion to Supplement Record which included various surcharge scenarios and also information on the recent history of the revenues and expenses of the Missouri Relay program fund (Exhibits 9, 10, 11 and 12).
2. In the process of converting the Exhibits to a format for filing in EFIS, the colors used in the charts and graphs were inadvertently lost.
3. WHEREFORE, the Staff proposes to supplement the record with the attached charts and graphs in color to distinguish the differences in the scenarios.

Respectfully submitted,

DANA K. JOYCE
General Counsel

/s/ William K. Haas

William K. Haas
Deputy General Counsel
Missouri Bar No. 28701

Attorney for the Staff of the
Missouri Public Service Commission
P. O. Box 360
Jefferson City, MO 65102
(573) 751-7510 (Telephone)
(573) 751-9285 (Fax)
william.haas@psc.mo.gov

Certificate of Service

I hereby certify that copies of the foregoing have been mailed, hand-delivered, transmitted by facsimile or electronically mailed to all counsel of record this 17th day of June, 2005.

/s/ William K. Haas

Impact on Fund of Various Surcharges Imposed in September 2005 Assuming 153 Minutes Average CapTel Usage

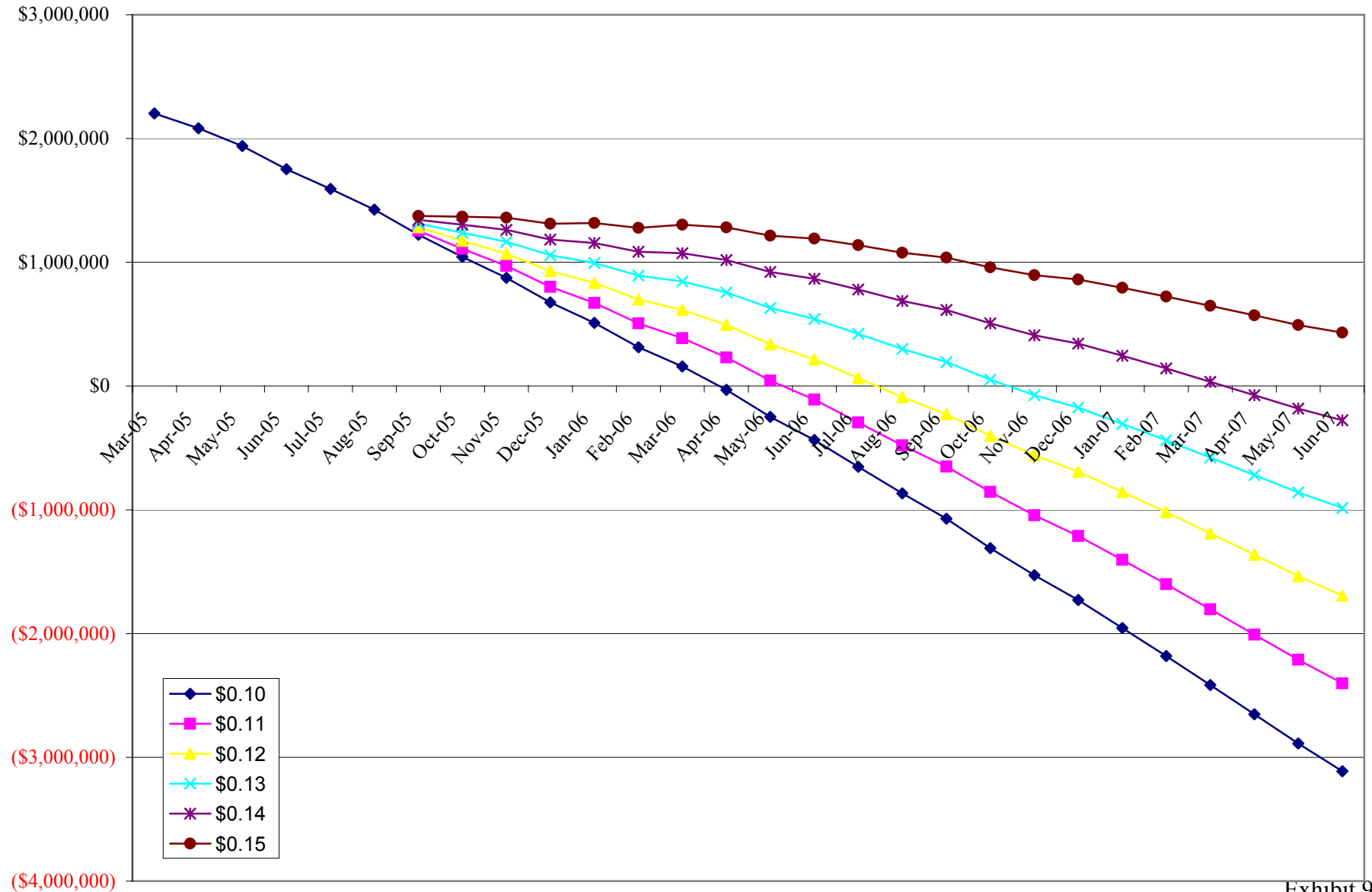
Table 1

Date	\$0.10	\$0.11	\$0.12	\$0.13	\$0.14	\$0.15
Mar-05	\$2,202,631.04					
Apr-05	\$2,083,735.23					
May-05	\$1,939,278.28					
Jun-05	\$1,752,396.07					
Jul-05	\$1,592,301.91					
Aug-05	\$1,424,802.58					
Sep-05	\$1,223,900.23	\$1,253,849.60	\$1,283,798.96	\$1,313,748.33	\$1,343,697.70	\$1,373,647.06
Oct-05	\$1,044,057.36	\$1,108,860.21	\$1,173,663.05	\$1,238,465.90	\$1,303,268.75	\$1,368,071.59
Nov-05	\$874,594.42	\$971,749.11	\$1,068,903.80	\$1,166,058.48	\$1,263,213.17	\$1,360,367.85
Dec-05	\$675,679.55	\$802,762.42	\$929,845.30	\$1,056,928.18	\$1,184,011.05	\$1,311,093.93
Jan-06	\$509,726.02	\$671,306.97	\$832,887.92	\$994,468.86	\$1,156,049.81	\$1,317,630.75
Feb-06	\$314,284.78	\$507,028.61	\$699,772.45	\$892,516.28	\$1,085,260.11	\$1,278,003.95
Mar-06	\$157,730.27	\$386,763.31	\$615,796.35	\$844,829.39	\$1,073,862.43	\$1,302,895.48
Apr-06	(\$30,340.93)	\$231,964.18	\$494,269.30	\$756,574.41	\$1,018,879.52	\$1,281,184.64
May-06	(\$248,249.14)	\$44,376.61	\$337,002.36	\$629,628.10	\$922,253.85	\$1,214,879.60
Jun-06	(\$435,241.48)	(\$109,770.41)	\$215,700.66	\$541,171.72	\$866,642.79	\$1,192,113.86
Jul-06	(\$652,596.68)	(\$294,490.13)	\$63,616.41	\$421,722.96	\$779,829.50	\$1,137,936.05
Aug-06	(\$867,219.55)	(\$478,429.54)	(\$89,639.54)	\$299,150.46	\$687,940.46	\$1,076,730.47
Sep-06	(\$1,071,254.03)	(\$649,578.44)	(\$227,902.85)	\$193,772.74	\$615,448.33	\$1,037,123.92
Oct-06	(\$1,309,503.54)	(\$855,631.99)	(\$401,760.44)	\$52,111.11	\$505,982.66	\$959,854.21
Nov-06	(\$1,527,963.87)	(\$1,043,280.93)	(\$558,597.99)	(\$73,915.04)	\$410,767.90	\$895,450.84
Dec-06	(\$1,728,438.93)	(\$1,210,645.36)	(\$692,851.79)	(\$175,058.22)	\$342,735.35	\$860,528.92
Jan-07	(\$1,954,688.11)	(\$1,405,022.26)	(\$855,356.40)	(\$305,690.55)	\$243,975.31	\$793,641.16
Feb-07	(\$2,181,500.42)	(\$1,600,499.28)	(\$1,019,498.14)	(\$438,497.00)	\$142,504.14	\$723,505.28
Mar-07	(\$2,415,993.18)	(\$1,803,271.93)	(\$1,190,550.68)	(\$577,829.43)	\$34,891.81	\$647,613.06
Apr-07	(\$2,652,184.87)	(\$2,007,611.79)	(\$1,363,038.71)	(\$718,465.63)	(\$73,892.55)	\$570,680.53
May-07	(\$2,887,997.37)	(\$2,211,636.20)	(\$1,535,275.03)	(\$858,913.86)	(\$182,552.70)	\$493,808.47
Jun-07	(\$3,111,754.91)	(\$2,402,891.50)	(\$1,694,028.09)	(\$985,164.68)	(\$276,301.27)	\$432,562.15

CapTel Usage: 153 Minutes, 20 Additional Phones
Refer to Chart A on Page 2

Exhibit 9
Table 1
Page 1

**Impact on Fund Balance of Various Surcharges under 153 Minutes CapTel Average Usage and 20 Additional CapTel Phones
Distribututed each Month
Chart A**

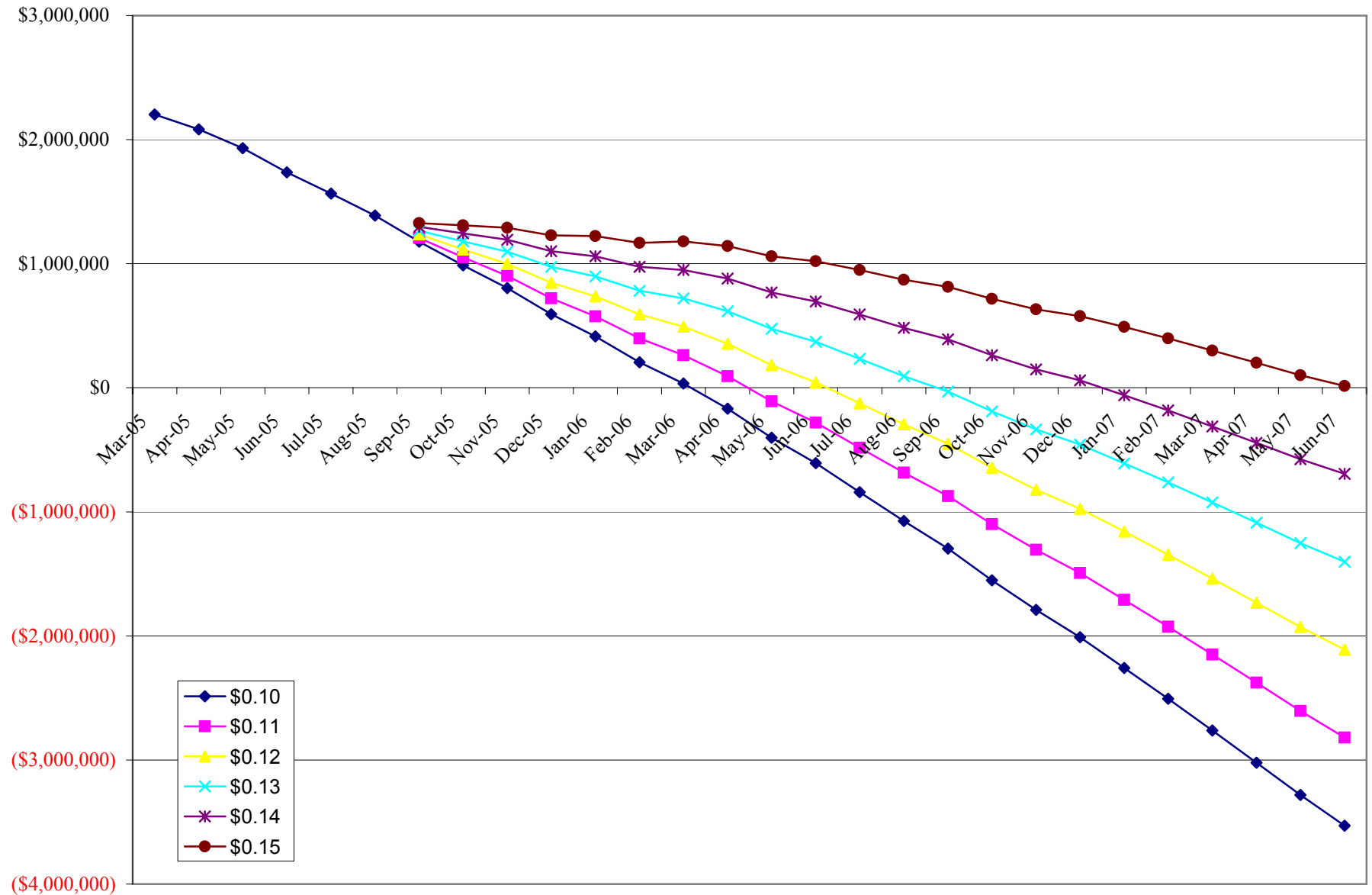


CapTel Usage: 153 Minutes, 20 Additional Phones
Surcharge Imposed September 2005
Refer to Table 1 on Page 1

Impact on Fund of Various Surcharges Imposed in September 2005 Assuming 175 Minutes Average CapTel Usage
Table 2

Date	\$0.10	\$0.11	\$0.12	\$0.13	\$0.14	\$0.15
Mar-05	\$2,202,631.04					
Apr-05	\$2,083,735.23					
May-05	\$1,931,207.58					
Jun-05	\$1,735,616.67					
Jul-05	\$1,566,175.81					
Aug-05	\$1,388,691.78					
Sep-05	\$1,177,166.73	\$1,207,116.10	\$1,237,065.46	\$1,267,014.83	\$1,296,964.20	\$1,326,913.56
Oct-05	\$986,063.16	\$1,050,866.01	\$1,115,668.85	\$1,180,471.70	\$1,245,274.55	\$1,310,077.39
Nov-05	\$804,701.52	\$901,856.21	\$999,010.90	\$1,096,165.58	\$1,193,320.27	\$1,290,474.95
Dec-05	\$593,249.95	\$720,332.82	\$847,415.70	\$974,498.58	\$1,101,581.45	\$1,228,664.33
Jan-06	\$414,121.72	\$575,702.67	\$737,283.62	\$898,864.56	\$1,060,445.51	\$1,222,026.45
Feb-06	\$204,867.78	\$397,611.61	\$590,355.45	\$783,099.28	\$975,843.11	\$1,168,586.95
Mar-06	\$33,862.57	\$262,895.61	\$491,928.65	\$720,961.69	\$949,994.73	\$1,179,027.78
Apr-06	(\$169,297.33)	\$93,007.78	\$355,312.90	\$617,618.01	\$879,923.12	\$1,142,228.24
May-06	(\$402,932.24)	(\$110,306.49)	\$182,319.26	\$474,945.00	\$767,570.75	\$1,060,196.50
Jun-06	(\$606,289.28)	(\$280,818.21)	\$44,652.86	\$370,123.92	\$695,594.99	\$1,021,066.06
Jul-06	(\$840,647.18)	(\$482,540.63)	(\$124,434.09)	\$233,672.46	\$591,779.00	\$949,885.55
Aug-06	(\$1,072,910.75)	(\$684,120.74)	(\$295,330.74)	\$93,459.26	\$482,249.26	\$871,039.27
Sep-06	(\$1,295,223.93)	(\$873,548.34)	(\$451,872.75)	(\$30,197.16)	\$391,478.43	\$813,154.02
Oct-06	(\$1,552,390.14)	(\$1,098,518.59)	(\$644,647.04)	(\$190,775.49)	\$263,096.06	\$716,967.61
Nov-06	(\$1,790,405.17)	(\$1,305,722.23)	(\$821,039.29)	(\$336,356.34)	\$148,326.60	\$633,009.54
Dec-06	(\$2,011,072.93)	(\$1,493,279.36)	(\$975,485.79)	(\$457,692.22)	\$60,101.35	\$577,894.92
Jan-07	(\$2,258,152.81)	(\$1,708,486.96)	(\$1,158,821.10)	(\$609,155.25)	(\$59,489.39)	\$490,176.46
Feb-07	(\$2,506,433.82)	(\$1,925,432.68)	(\$1,344,431.54)	(\$763,430.40)	(\$182,429.26)	\$398,571.88
Mar-07	(\$2,763,033.28)	(\$2,150,312.03)	(\$1,537,590.78)	(\$924,869.53)	(\$312,148.29)	\$300,572.96
Apr-07	(\$3,021,969.67)	(\$2,377,396.59)	(\$1,732,823.51)	(\$1,088,250.43)	(\$443,677.35)	\$200,895.73
May-07	(\$3,281,164.87)	(\$2,604,803.70)	(\$1,928,442.53)	(\$1,252,081.36)	(\$575,720.20)	\$100,640.97
Jun-07	(\$3,528,943.11)	(\$2,820,079.70)	(\$2,111,216.29)	(\$1,402,352.88)	(\$693,489.47)	\$15,373.95

Impact on Fund of Various Surcharges Imposed in September 2005 Assuming 175 Minutes Average CapTel Usage
Chart B



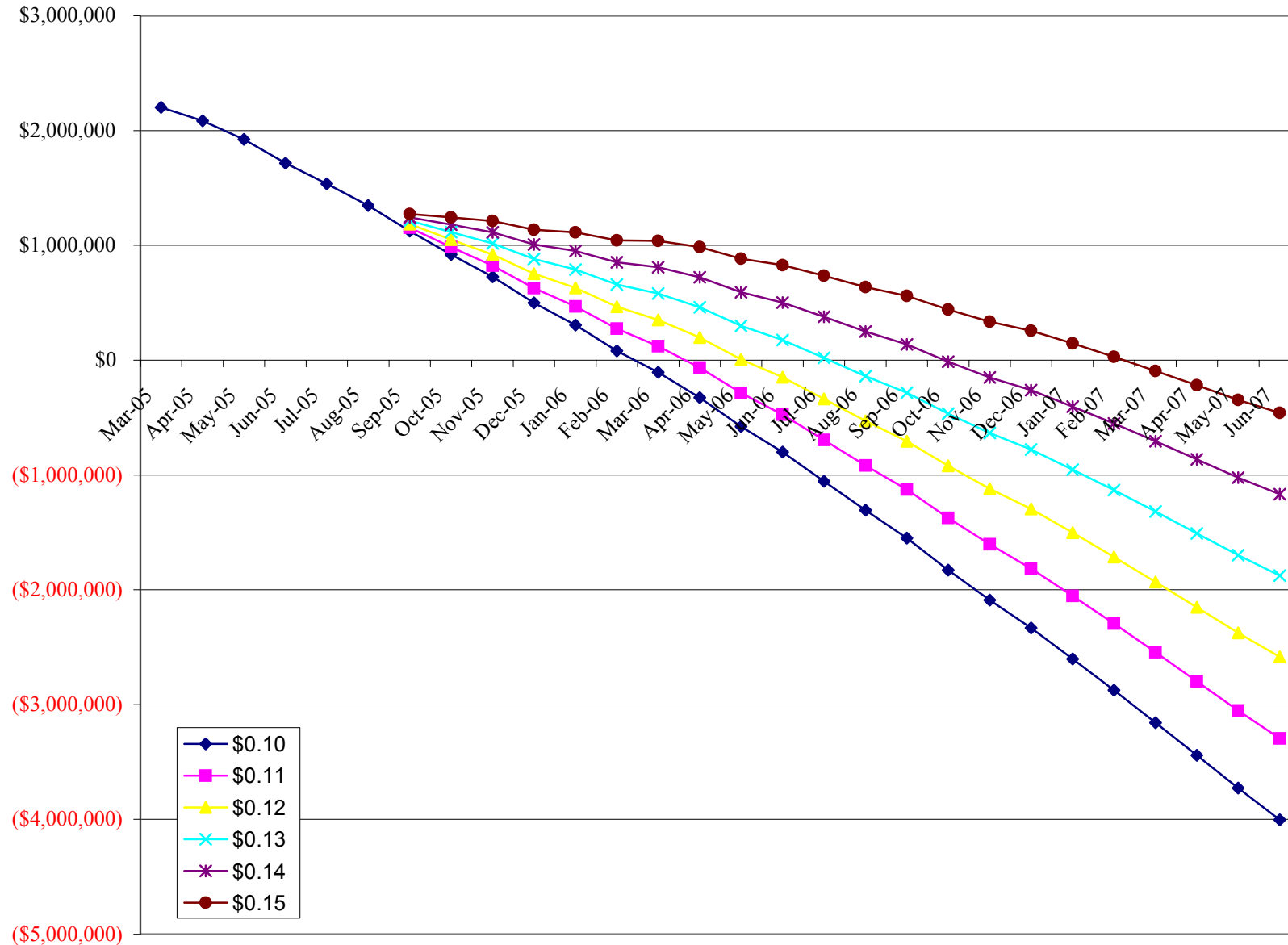
CapTel Usage: 175 Minutes, 20 Additional Phones
 Surcharge Imposed September 2005
 Refer to Table 2 on Page 3

Impact on Fund of Various Surcharges Imposed in September 2005 Assuming 200 Minutes Average CapTel Usage

Table 3

Date	\$0.10	\$0.11	\$0.12	\$0.13	\$0.14	\$0.15
Mar-05	\$2,202,631.04					
Apr-05	\$2,083,735.23					
May-05	\$1,922,036.33					
Jun-05	\$1,716,549.17					
Jul-05	\$1,536,487.06					
Aug-05	\$1,347,656.78					
Sep-05	\$1,124,060.48	\$1,154,009.85	\$1,183,959.21	\$1,213,908.58	\$1,243,857.95	\$1,273,807.31
Oct-05	\$920,160.66	\$984,963.51	\$1,049,766.35	\$1,114,569.20	\$1,179,372.05	\$1,244,174.89
Nov-05	\$725,277.77	\$822,432.46	\$919,587.15	\$1,016,741.83	\$1,113,896.52	\$1,211,051.20
Dec-05	\$499,579.95	\$626,662.82	\$753,745.70	\$880,828.58	\$1,007,911.45	\$1,134,994.33
Jan-06	\$305,480.47	\$467,061.42	\$628,642.37	\$790,223.31	\$951,804.26	\$1,113,385.20
Feb-06	\$80,530.28	\$273,274.11	\$466,017.95	\$658,761.78	\$851,505.61	\$1,044,249.45
Mar-06	(\$106,896.18)	\$122,136.86	\$351,169.90	\$580,202.94	\$809,235.98	\$1,038,269.03
Apr-06	(\$327,202.33)	(\$64,897.22)	\$197,407.90	\$459,713.01	\$722,018.12	\$984,323.24
May-06	(\$578,708.49)	(\$286,082.74)	\$6,543.01	\$299,168.75	\$591,794.50	\$884,420.25
Jun-06	(\$800,661.78)	(\$475,190.71)	(\$149,719.64)	\$175,751.42	\$501,222.49	\$826,693.56
Jul-06	(\$1,054,340.93)	(\$696,234.38)	(\$338,127.84)	\$19,978.71	\$378,085.25	\$736,191.80
Aug-06	(\$1,306,650.75)	(\$917,860.74)	(\$529,070.74)	(\$140,280.74)	\$248,509.26	\$637,299.27
Sep-06	(\$1,549,735.18)	(\$1,128,059.59)	(\$706,384.00)	(\$284,708.41)	\$136,967.18	\$558,642.77
Oct-06	(\$1,828,397.64)	(\$1,374,526.09)	(\$920,654.54)	(\$466,782.99)	(\$12,911.44)	\$440,960.11
Nov-06	(\$2,088,633.92)	(\$1,603,950.98)	(\$1,119,268.04)	(\$634,585.09)	(\$149,902.15)	\$334,780.79
Dec-06	(\$2,332,247.93)	(\$1,814,454.36)	(\$1,296,660.79)	(\$778,867.22)	(\$261,073.65)	\$256,719.92
Jan-07	(\$2,602,999.06)	(\$2,053,333.21)	(\$1,503,667.35)	(\$954,001.50)	(\$404,335.64)	\$145,330.21
Feb-07	(\$2,875,676.32)	(\$2,294,675.18)	(\$1,713,674.04)	(\$1,132,672.90)	(\$551,671.76)	\$29,329.38
Mar-07	(\$3,157,397.03)	(\$2,544,675.78)	(\$1,931,954.53)	(\$1,319,233.28)	(\$706,512.04)	(\$93,790.79)
Apr-07	(\$3,442,179.67)	(\$2,797,606.59)	(\$2,153,033.51)	(\$1,508,460.43)	(\$863,887.35)	(\$219,314.27)
May-07	(\$3,727,946.12)	(\$3,051,584.95)	(\$2,375,223.78)	(\$1,698,862.61)	(\$1,022,501.45)	(\$346,140.28)
Jun-07	(\$4,003,020.61)	(\$3,294,157.20)	(\$2,585,293.79)	(\$1,876,430.38)	(\$1,167,566.97)	(\$458,703.55)

**Impact on Fund Balance of Various Surcharges under 200 Minutes CapTel Average Usage and 20 Additional CapTel Phones
Distributed Each Month
Chart C**



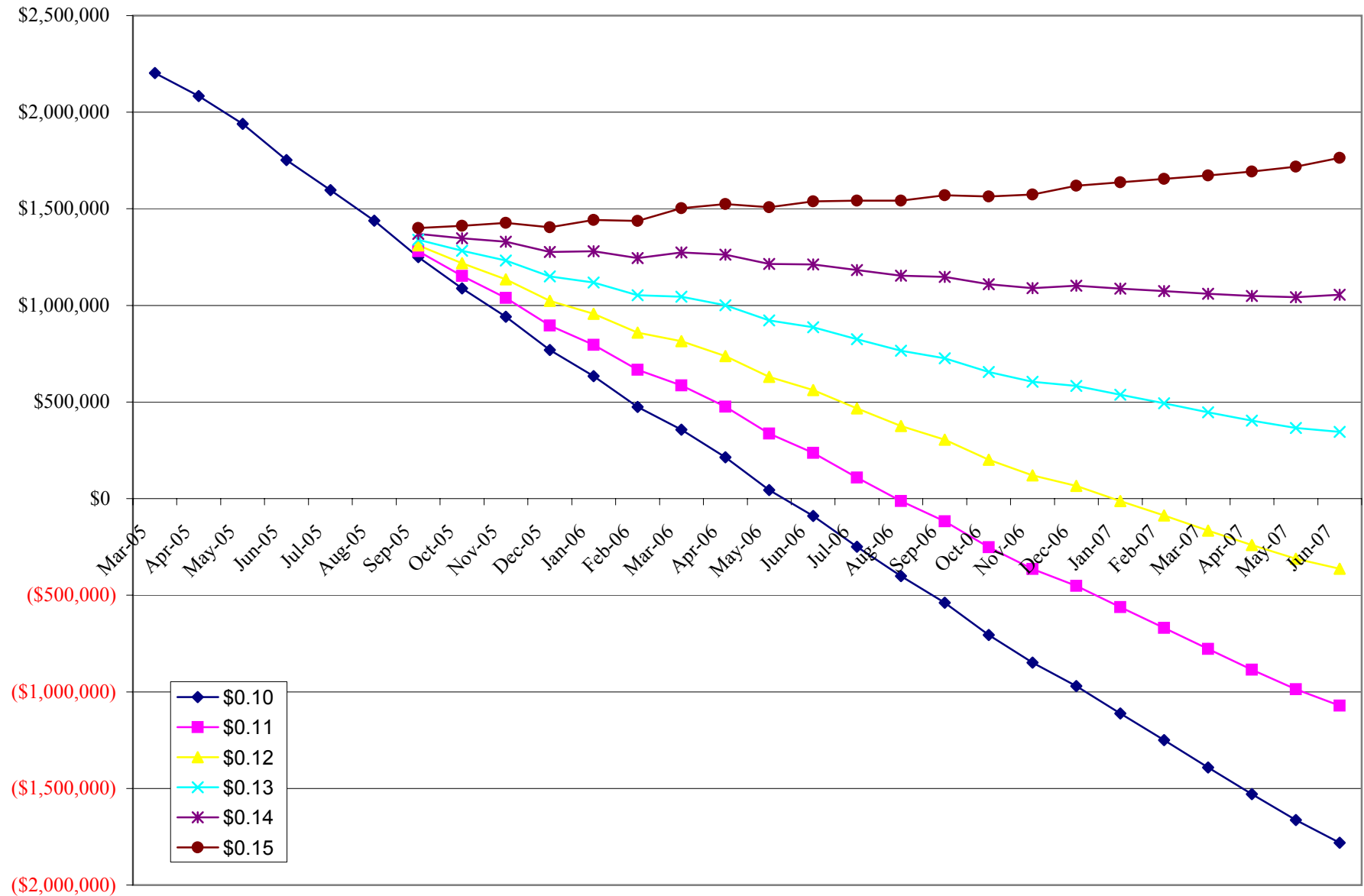
CapTel Usage: 200 Minutes, 20 Additional Phones
 Surcharge Imposed September 2005
 Refer to Table 3 on Page 5

**Impact on Fund of Various Surcharges Imposed In September 2005 with CapTel Distribution Frozen
on June 30, 2005 and 153 Minutes Residual Average CapTel Usage**

Table 4

Date	Surcharge Senarios with New Surcharge Implemented September 1, 2005					
	\$0.10	\$0.11	\$0.12	\$0.13	\$0.14	\$0.15
Mar-05	\$2,202,631.04					
Apr-05	\$2,083,735.23					
May-05	\$1,939,278.28					
Jun-05	\$1,752,396.07					
Jul-05	\$1,596,738.91					
Aug-05	\$1,438,113.58					
Sep-05	\$1,250,522.23	\$1,280,471.60	\$1,310,420.96	\$1,340,370.33	\$1,370,319.70	\$1,400,269.06
Oct-05	\$1,088,427.36	\$1,153,230.21	\$1,218,033.05	\$1,282,835.90	\$1,347,638.75	\$1,412,441.59
Nov-05	\$941,149.42	\$1,038,304.11	\$1,135,458.80	\$1,232,613.48	\$1,329,768.17	\$1,426,922.85
Dec-05	\$768,856.55	\$895,939.42	\$1,023,022.30	\$1,150,105.18	\$1,277,188.05	\$1,404,270.93
Jan-06	\$633,962.02	\$795,542.97	\$957,123.92	\$1,118,704.86	\$1,280,285.81	\$1,441,866.75
Feb-06	\$474,016.78	\$666,760.61	\$859,504.45	\$1,052,248.28	\$1,244,992.11	\$1,437,735.95
Mar-06	\$357,395.27	\$586,428.31	\$815,461.35	\$1,044,494.39	\$1,273,527.43	\$1,502,560.48
Apr-06	\$213,694.07	\$475,999.18	\$738,304.30	\$1,000,609.41	\$1,262,914.52	\$1,525,219.64
May-06	\$44,592.86	\$337,218.61	\$629,844.36	\$922,470.10	\$1,215,095.85	\$1,507,721.60
Jun-06	(\$89,155.48)	\$236,315.59	\$561,786.66	\$887,257.72	\$1,212,728.79	\$1,538,199.86
Jul-06	(\$248,829.68)	\$109,276.87	\$467,383.41	\$825,489.96	\$1,183,596.50	\$1,541,703.05
Aug-06	(\$401,334.55)	(\$12,544.54)	\$376,245.46	\$765,035.46	\$1,153,825.46	\$1,542,615.47
Sep-06	(\$538,814.03)	(\$117,138.44)	\$304,537.15	\$726,212.74	\$1,147,888.33	\$1,569,563.92
Oct-06	(\$706,071.54)	(\$252,199.99)	\$201,671.56	\$655,543.11	\$1,109,414.66	\$1,563,286.21
Nov-06	(\$849,102.87)	(\$364,419.93)	\$120,263.01	\$604,945.96	\$1,089,628.90	\$1,574,311.84
Dec-06	(\$969,711.93)	(\$451,918.36)	\$65,875.21	\$583,668.78	\$1,101,462.35	\$1,619,255.92
Jan-07	(\$1,111,658.11)	(\$561,992.26)	(\$12,326.40)	\$537,339.45	\$1,087,005.31	\$1,636,671.16
Feb-07	(\$1,249,730.42)	(\$668,729.28)	(\$87,728.14)	\$493,273.00	\$1,074,274.14	\$1,655,275.28
Mar-07	(\$1,391,046.18)	(\$778,324.93)	(\$165,603.68)	\$447,117.57	\$1,059,838.81	\$1,672,560.06
Apr-07	(\$1,529,623.87)	(\$885,050.79)	(\$240,477.71)	\$404,095.37	\$1,048,668.45	\$1,693,241.53
May-07	(\$1,663,385.37)	(\$987,024.20)	(\$310,663.03)	\$365,698.14	\$1,042,059.30	\$1,718,420.47
Jun-07	(\$1,780,654.91)	(\$1,071,791.50)	(\$362,928.09)	\$345,935.32	\$1,054,798.73	\$1,763,662.15

Impact on Fund Balance of Various Surcharges under Frozen CapTel Distribution and 153 Minutes Residual Average CapTel Usage
Chart D



CapTel Usage: 153 Minutes Residual Usage, Distribution Frozen June 30, 2005
 Surcharge Imposed September 2005
 Refer to Table 4 on Page 7

Exhibit 9
 Chart D
 Page 8

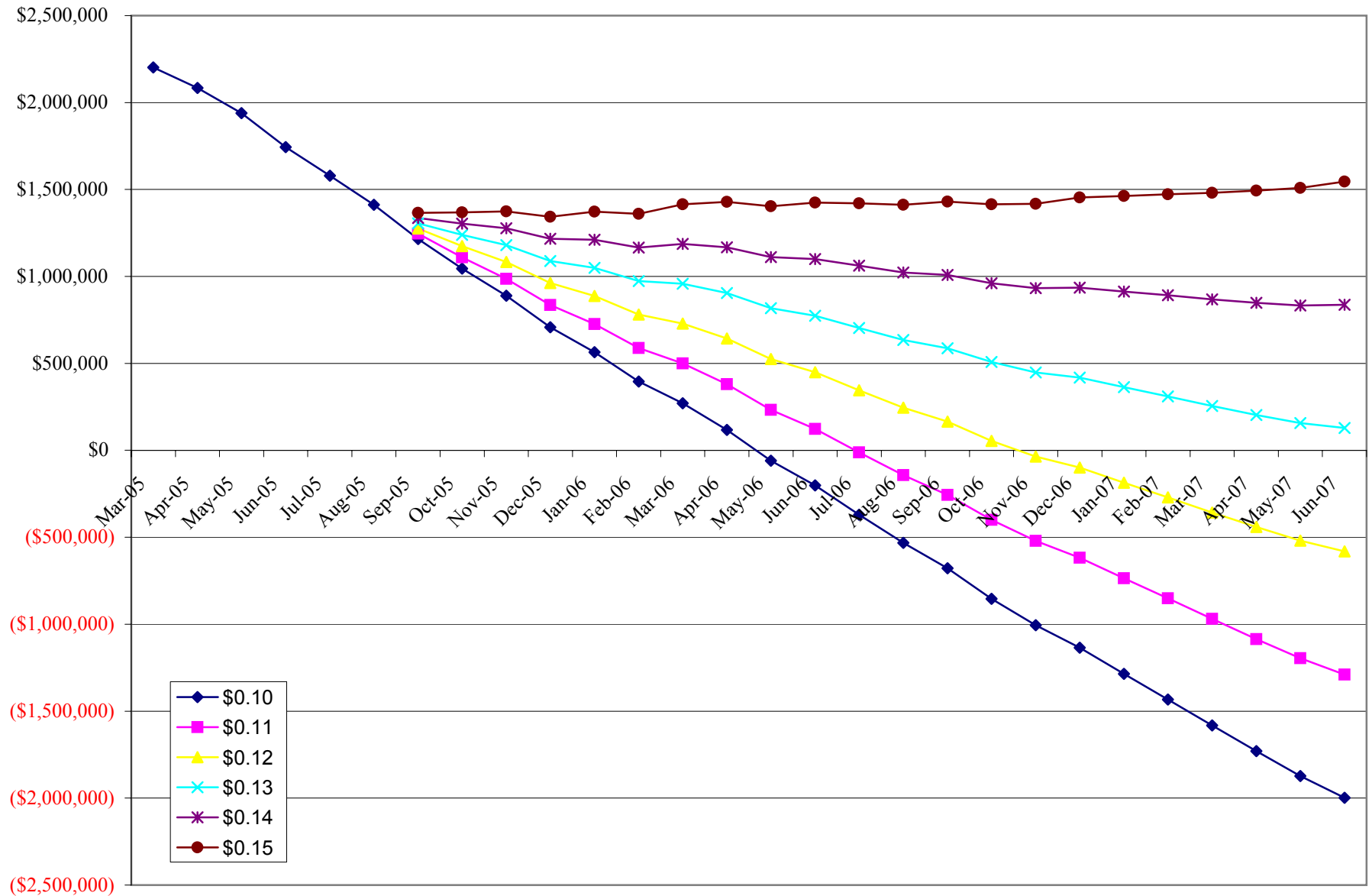
**Impact on Fund of Various Surcharges Imposed in September 2005 with CapTel Distribution Frozen
On June 30, 2005 and 175 Minutes Residual Average CapTel Usage**

Table 5

Surcharge Scenarios with New Surcharge Implemented September 1, 2005						
Date	\$0.10	\$0.11	\$0.12	\$0.13	\$0.14	\$0.15
Mar-05	\$2,202,631.04					
Apr-05	\$2,083,735.23					
May-05	\$1,939,278.28					
Jun-05	\$1,743,687.37					
Jul-05	\$1,579,321.51					
Aug-05	\$1,411,987.48					
Sep-05	\$1,215,687.43	\$1,245,636.80	\$1,275,586.16	\$1,305,535.53	\$1,335,484.90	\$1,365,434.26
Oct-05	\$1,044,883.86	\$1,109,686.71	\$1,174,489.55	\$1,239,292.40	\$1,304,095.25	\$1,368,898.09
Nov-05	\$888,897.22	\$986,051.91	\$1,083,206.60	\$1,180,361.28	\$1,277,515.97	\$1,374,670.65
Dec-05	\$707,895.65	\$834,978.52	\$962,061.40	\$1,089,144.28	\$1,216,227.15	\$1,343,310.03
Jan-06	\$564,292.42	\$725,873.37	\$887,454.32	\$1,049,035.26	\$1,210,616.21	\$1,372,197.15
Feb-06	\$395,638.48	\$588,382.31	\$781,126.15	\$973,869.98	\$1,166,613.81	\$1,359,357.65
Mar-06	\$270,308.27	\$499,341.31	\$728,374.35	\$957,407.39	\$1,186,440.43	\$1,415,473.48
Apr-06	\$117,898.37	\$380,203.48	\$642,508.60	\$904,813.71	\$1,167,118.82	\$1,429,423.94
May-06	(\$59,911.54)	\$232,714.21	\$525,339.96	\$817,965.70	\$1,110,591.45	\$1,403,217.20
Jun-06	(\$202,368.58)	\$123,102.49	\$448,573.56	\$774,044.62	\$1,099,515.69	\$1,424,986.76
Jul-06	(\$370,751.48)	(\$12,644.93)	\$345,461.61	\$703,568.16	\$1,061,674.70	\$1,419,781.25
Aug-06	(\$531,965.05)	(\$143,175.04)	\$245,614.96	\$634,404.96	\$1,023,194.96	\$1,411,984.97
Sep-06	(\$678,153.23)	(\$256,477.64)	\$165,197.95	\$586,873.54	\$1,008,549.13	\$1,430,224.72
Oct-06	(\$854,119.44)	(\$400,247.89)	\$53,623.66	\$507,495.21	\$961,366.76	\$1,415,238.31
Nov-06	(\$1,005,859.47)	(\$521,176.53)	(\$36,493.59)	\$448,189.36	\$932,872.30	\$1,417,555.24
Dec-06	(\$1,135,177.23)	(\$617,383.66)	(\$99,590.09)	\$418,203.48	\$935,997.05	\$1,453,790.62
Jan-07	(\$1,285,832.11)	(\$736,166.26)	(\$186,500.40)	\$363,165.45	\$912,831.31	\$1,462,497.16
Feb-07	(\$1,432,613.12)	(\$851,611.98)	(\$270,610.84)	\$310,390.30	\$891,391.44	\$1,472,392.58
Mar-07	(\$1,582,637.58)	(\$969,916.33)	(\$357,195.08)	\$255,526.17	\$868,247.41	\$1,480,968.66
Apr-07	(\$1,729,923.97)	(\$1,085,350.89)	(\$440,777.81)	\$203,795.27	\$848,368.35	\$1,492,941.43
May-07	(\$1,872,394.17)	(\$1,196,033.00)	(\$519,671.83)	\$156,689.34	\$833,050.50	\$1,509,411.67
Jun-07	(\$1,998,372.41)	(\$1,289,509.00)	(\$580,645.59)	\$128,217.82	\$837,081.23	\$1,545,944.65

Impact on Fund Balance of Various Surcharges under Frozen CapTel Distribution and 175 Minutes Residual Average CapTel Usage

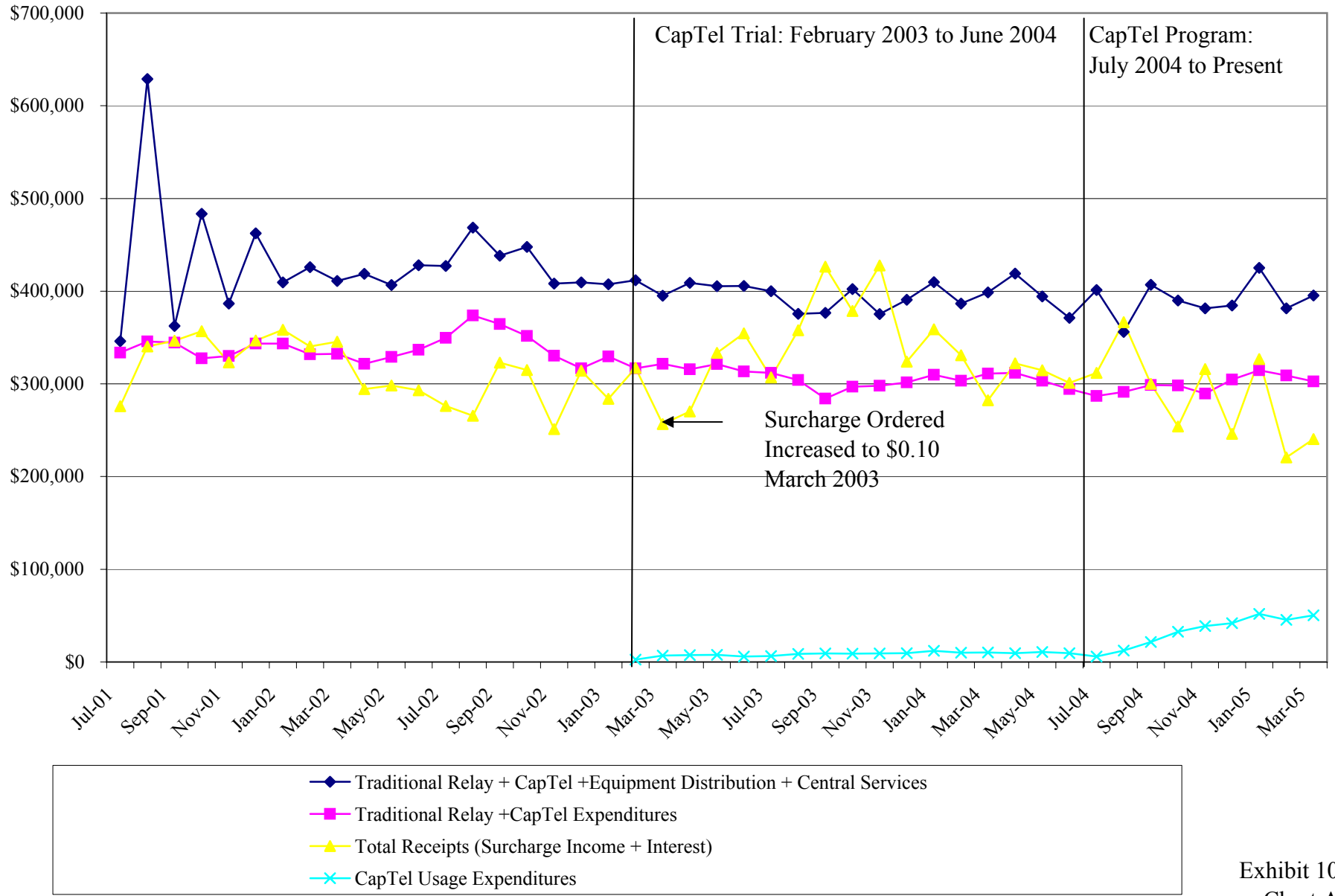
Chart E



CapTel Usage: 175 Minutes Residual Usage, Distribution Frozen June 30, 2005
 Surcharge Imposed September 2005
 Refer to Table 5 on Page 9

Exhibit 9
 Chart E
 Page 10

Relay Fund Expenditures and Receipts: July 2001-March 2005
Chart A



Analysis of Fund Income and Expenditures for the Period November 2004-April 2005

Table 1

Refer to Exhibit 10 Chart A

	April 2005	March 2005	February 2005	January 2005	December 2004	November 2004
Income (Surcharge Income + Interest)	\$514,210.31	\$109,273.51	\$301,546.20	\$318,674.74	\$348,237.56	\$266,936.02
Total Expenditures (Traditional Relay Usage Expenditures + CapTel Usage Expenditures + Equipment Distribution Expenditures + Central Services Cost Allocation Assessment)	\$437,249.4200	\$427,581.6500	\$399,310.1300	\$452,922.7400	\$451,411.7500	\$412,494.7400
Income - Total Expenditures = Surplus or (Shortage)	\$76,960.89	(\$318,308.14)	(\$97,763.93)	(\$134,248.00)	(\$103,174.19)	(\$145,558.72)
Estimated Additional Surcharge Necessary to Cover Shortage	(\$0.0257)	\$0.1061	\$0.0326	\$0.0447	\$0.0344	\$0.0485
Equipment Distribution Program Expenditures	\$121,519.99	\$118,178.44	\$119,154.77	\$118,018.21	\$153,870.05	\$120,172.78
Traditional Relay + CapTel Expenditures	\$298,780.43	\$309,403.21	\$280,155.36	\$318,219.53	\$297,541.70	\$292,321.96
Central Services Cost Allocation (Fund charged quarterly)	\$16,949.00	\$0.00	\$0.00	\$16,685.00	\$0.00	\$0.00
Total Expenditures	\$437,249.42	\$427,581.65	\$399,310.13	\$452,922.74	\$451,411.75	\$412,494.74

Annual Analysis of Fund Income and Expenditures for the Periods March 2003-February 2004 and March 2004-February 2005

Table 2

	Mar-03-Feb 04	Mar '04-Feb '05
Annual Income (Surcharge + Interest)	\$3,765,715.33	\$3,894,421.37
Total Fund Expenditures	\$5,121,446.50	\$5,050,596.66
Surplus or (Shortage)	(\$1,355,731.17)	(\$1,156,175.29)
Estimated Additional Monthly Surcharge Necessary to Cover Shortage	\$0.0377	\$0.0321
Annual Equipment Distribution Program Expenditures	\$1,420,518.96	\$1,456,193.44
Annual Traditional Relay + CapTel Usage Expenditures	\$3,666,003.54	\$3,526,347.22
Central Services Cost Allocation Program Assessments	\$34,924.00	\$68,056.00
Total Fund Expenditures	\$5,121,446.50	\$5,050,596.66

Average Monthly Interest Receipt for Fiscal Years 1999-2005

Months	FY	Average Monthly Interest Receipt
Jul/98-Jun/99	FY'99	\$28,445.35
Jul/99-Jun/00	FY'00	\$31,967.87
Jul/00-Jun/01	FY'01	\$38,524.19
Jul/01-Jun/02	FY'02	\$23,222.72
Jul/02-Jun/03	FY'03	\$10,220.98
Jul/03-Jun-04	FY'04	\$6,172.68
Jul-04-Apr/05	FY'05	\$5,325.75

Impact on Fund of Various Surcharges Imposed in September 2005 Assuming Distribution of 10 CapTel Phones per Month at 153 Minutes Average Usage

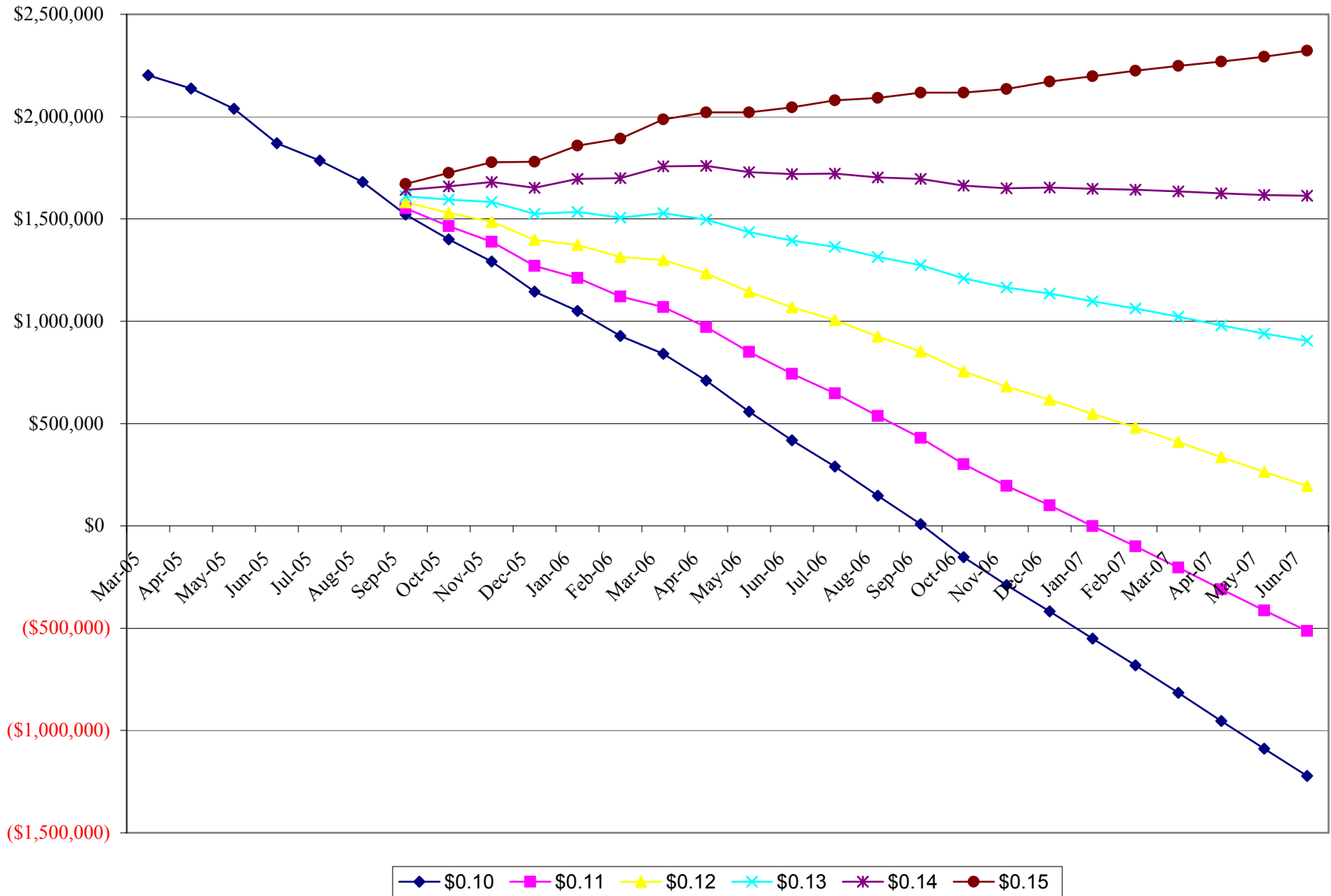
Table 1

	\$0.10	\$0.11	\$0.12	\$0.13	\$0.14	\$0.15
Mar-05	\$2,202,631.04					
Apr-05	\$2,137,215.24					
May-05	\$2,038,898.36					
Jun-05	\$1,869,803.71					
Jul-05	\$1,784,977.51					
Aug-05	\$1,680,257.66					
Sep-05	\$1,521,667.38	\$1,551,616.75	\$1,581,566.12	\$1,611,515.48	\$1,641,464.85	\$1,671,414.22
Oct-05	\$1,400,603.05	\$1,465,405.89	\$1,530,208.74	\$1,595,011.59	\$1,659,814.43	\$1,724,617.28
Nov-05	\$1,291,642.21	\$1,388,796.90	\$1,485,951.58	\$1,583,106.27	\$1,680,260.95	\$1,777,415.64
Dec-05	\$1,144,105.78	\$1,271,188.65	\$1,398,271.53	\$1,525,354.41	\$1,652,437.28	\$1,779,520.16
Jan-06	\$1,049,987.63	\$1,211,568.57	\$1,373,149.52	\$1,534,730.46	\$1,696,311.41	\$1,857,892.35
Feb-06	\$928,275.70	\$1,121,019.53	\$1,313,763.36	\$1,506,507.20	\$1,699,251.03	\$1,891,994.86
Mar-06	\$840,870.77	\$1,069,903.81	\$1,298,936.85	\$1,527,969.89	\$1,757,002.93	\$1,986,035.97
Apr-06	\$709,741.30	\$972,046.41	\$1,234,351.53	\$1,496,656.64	\$1,758,961.75	\$2,021,266.87
May-06	\$558,174.37	\$850,800.11	\$1,143,425.86	\$1,436,051.61	\$1,728,677.35	\$2,021,303.10
Jun-06	\$417,715.73	\$743,186.80	\$1,068,657.87	\$1,394,128.94	\$1,719,600.00	\$2,045,071.07
Jul-06	\$289,372.41	\$647,478.96	\$1,005,585.50	\$1,363,692.05	\$1,721,798.59	\$2,079,905.14
Aug-06	\$147,732.82	\$536,522.82	\$925,312.83	\$1,314,102.83	\$1,702,892.83	\$2,091,682.83
Sep-06	\$8,766.91	\$430,442.50	\$852,118.09	\$1,273,793.68	\$1,695,469.28	\$2,117,144.87
Oct-06	(\$152,397.26)	\$301,474.29	\$755,345.84	\$1,209,217.39	\$1,663,088.94	\$2,116,960.49
Nov-06	(\$289,021.30)	\$195,661.64	\$680,344.58	\$1,165,027.52	\$1,649,710.46	\$2,134,393.41
Dec-06	(\$417,849.06)	\$99,944.51	\$617,738.08	\$1,135,531.65	\$1,653,325.22	\$2,171,118.79
Jan-07	(\$551,061.40)	(\$1,395.55)	\$548,270.31	\$1,097,936.16	\$1,647,602.02	\$2,197,267.87
Feb-07	(\$681,047.73)	(\$100,046.59)	\$480,954.55	\$1,061,955.69	\$1,642,956.83	\$2,223,957.97
Mar-07	(\$816,065.91)	(\$203,344.66)	\$409,376.59	\$1,022,097.83	\$1,634,819.08	\$2,247,540.33
Apr-07	(\$953,744.57)	(\$309,171.49)	\$335,401.59	\$979,974.67	\$1,624,547.75	\$2,269,120.83
May-07	(\$1,089,096.43)	(\$412,735.26)	\$263,625.90	\$939,987.07	\$1,616,348.24	\$2,292,709.41
Jun-07	(\$1,222,669.61)	(\$513,806.19)	\$195,057.22	\$903,920.63	\$1,612,784.04	\$2,321,647.45

CapTel Usage: 153 Minutes; 10 Additional Phones
September 2005 Implementation
Refer to Chart A on Page 2

Exhibit 12
Table 1
Page 1

Impact on Fund of Various Surcharges Imposed In September 2005 Assuming Distribution of 10 CapTel Phones Per Month at 153 Minutes Average Usage
Chart A



CapTel Usage: 153 Minutes; 10 Additional Phones
 September 2005 Implementation
 Refer to Table 1 on Page 1

**Impact on Fund of Various Surcharges Imposed in September 2005 Assuming Distribution of 10 CapTel Phones Per Month at 175
Minutes Average Usage**

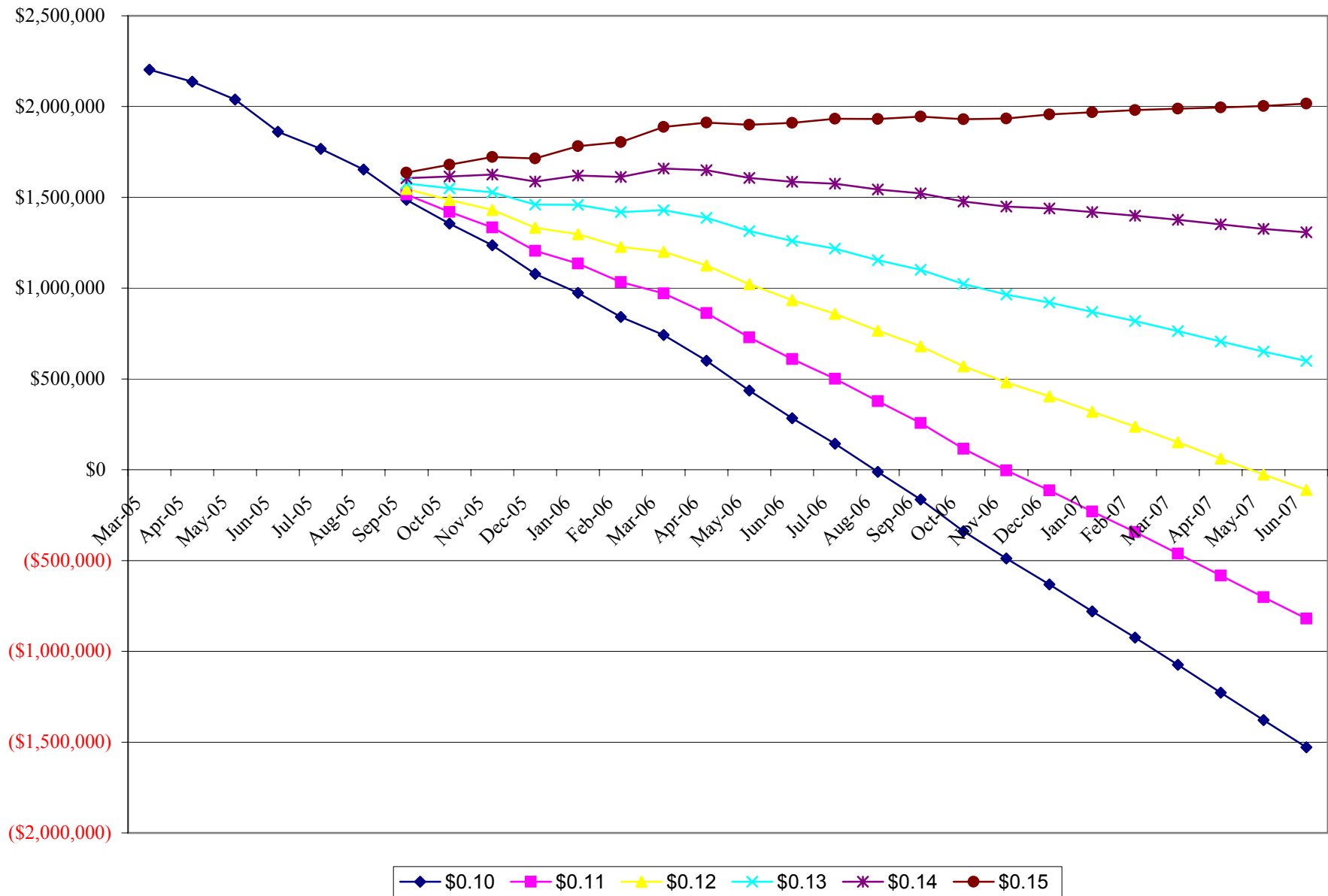
Table 2

	\$0.10	\$0.11	\$0.12	\$0.13	\$0.14	\$0.15
Mar-05	\$2,202,631.04					
Apr-05	\$2,137,215.24					
May-05	\$2,038,898.36					
Jun-05	\$1,861,414.01					
Jul-05	\$1,767,879.11					
Aug-05	\$1,654,131.56					
Sep-05	\$1,486,194.58	\$1,516,143.95	\$1,546,093.32	\$1,576,042.68	\$1,605,992.05	\$1,635,941.42
Oct-05	\$1,355,464.55	\$1,420,267.39	\$1,485,070.24	\$1,549,873.09	\$1,614,675.93	\$1,679,478.78
Nov-05	\$1,236,519.01	\$1,333,673.70	\$1,430,828.38	\$1,527,983.07	\$1,625,137.75	\$1,722,292.44
Dec-05	\$1,078,678.88	\$1,205,761.75	\$1,332,844.63	\$1,459,927.51	\$1,587,010.38	\$1,714,093.26
Jan-06	\$973,938.03	\$1,135,518.97	\$1,297,099.92	\$1,458,680.86	\$1,620,261.81	\$1,781,842.75
Feb-06	\$841,284.40	\$1,034,028.23	\$1,226,772.06	\$1,419,515.90	\$1,612,259.73	\$1,805,003.56
Mar-06	\$742,618.77	\$971,651.81	\$1,200,684.85	\$1,429,717.89	\$1,658,750.93	\$1,887,783.97
Apr-06	\$599,909.60	\$862,214.71	\$1,124,519.83	\$1,386,824.94	\$1,649,130.05	\$1,911,435.17
May-06	\$436,443.97	\$729,069.71	\$1,021,695.46	\$1,314,321.21	\$1,606,946.95	\$1,899,572.70
Jun-06	\$283,767.63	\$609,238.70	\$934,709.77	\$1,260,180.84	\$1,585,651.90	\$1,911,122.97
Jul-06	\$142,887.61	\$500,994.16	\$859,100.70	\$1,217,207.25	\$1,575,313.79	\$1,933,420.34
Aug-06	(\$11,607.68)	\$377,182.32	\$765,972.33	\$1,154,762.33	\$1,543,552.33	\$1,932,342.33
Sep-06	(\$163,748.29)	\$257,927.30	\$679,602.89	\$1,101,278.48	\$1,522,954.08	\$1,944,629.67
Oct-06	(\$338,406.16)	\$115,465.39	\$569,336.94	\$1,023,208.49	\$1,477,080.04	\$1,930,951.59
Nov-06	(\$488,842.90)	(\$4,159.96)	\$480,522.98	\$965,205.92	\$1,449,888.86	\$1,934,571.81
Dec-06	(\$631,802.36)	(\$114,008.79)	\$403,784.78	\$921,578.35	\$1,439,371.92	\$1,957,165.49
Jan-07	(\$779,465.40)	(\$229,799.55)	\$319,866.31	\$869,532.16	\$1,419,198.02	\$1,968,863.87
Feb-07	(\$924,221.43)	(\$343,220.29)	\$237,780.85	\$818,781.99	\$1,399,783.13	\$1,980,784.27
Mar-07	(\$1,074,328.31)	(\$461,607.06)	\$151,114.19	\$763,835.43	\$1,376,556.68	\$1,989,277.93
Apr-07	(\$1,227,414.67)	(\$582,841.59)	\$61,731.49	\$706,304.57	\$1,350,877.65	\$1,995,450.73
May-07	(\$1,378,493.23)	(\$702,132.06)	(\$25,770.90)	\$650,590.27	\$1,326,951.44	\$2,003,312.61
Jun-07	(\$1,528,112.11)	(\$819,248.69)	(\$110,385.28)	\$598,478.13	\$1,307,341.54	\$2,016,204.95

CapTel Usage:175 Minutes; 10 Additional Phones
September 2005 Implementation
Refer to Chart B on Page 4

Exhibit 12
Table 2
Page 3

Impact on Fund of Various Surcharges Imposed in September Assuming Distribution of 10 CapTel Phones per Month at 175 Minutes
Average Usage
Chart B



CapTel Usage: 175 Minutes; 10 Additional Phones
 September 2005 Implementation
 Refer to Table 2 on Page 3

**Impact on Fund of Various Surcharges Imposed in September 2005 Assuming Distribution of 10 CapTel Phones Per Month at 200
Minutes Average Usage**

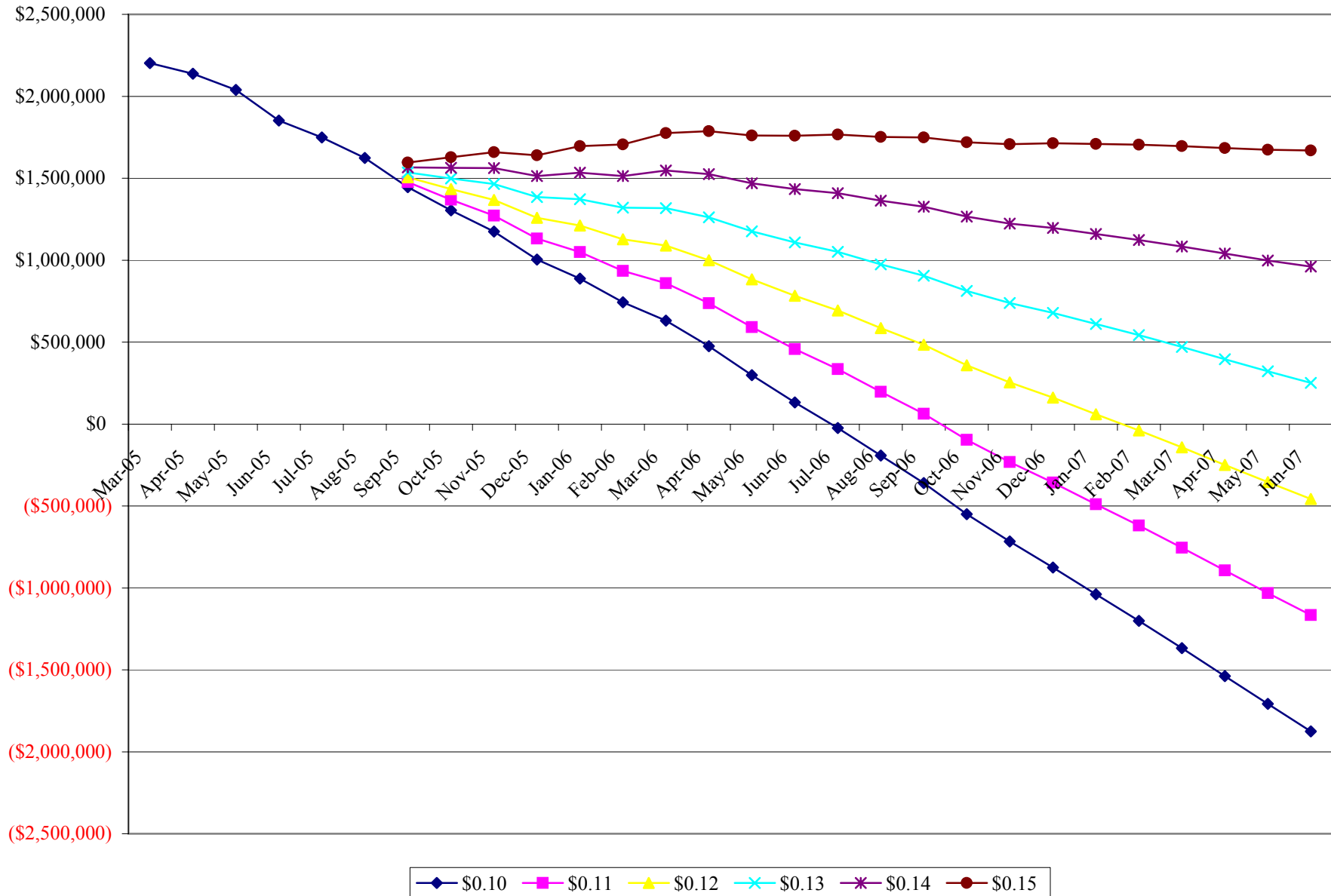
Table 3

	\$0.10	\$0.11	\$0.12	\$0.13	\$0.14	\$0.15
Mar-05	\$2,202,631.04					
Apr-05	\$2,137,215.24					
May-05	\$2,038,898.36					
Jun-05	\$1,851,880.26					
Jul-05	\$1,748,449.11					
Aug-05	\$1,624,442.81					
Sep-05	\$1,445,884.58	\$1,475,833.95	\$1,505,783.32	\$1,535,732.68	\$1,565,682.05	\$1,595,631.42
Oct-05	\$1,304,170.80	\$1,368,973.64	\$1,433,776.49	\$1,498,579.34	\$1,563,382.18	\$1,628,185.03
Nov-05	\$1,173,879.01	\$1,271,033.70	\$1,368,188.38	\$1,465,343.07	\$1,562,497.75	\$1,659,652.44
Dec-05	\$1,004,330.13	\$1,131,413.00	\$1,258,495.88	\$1,385,578.76	\$1,512,661.63	\$1,639,744.51
Jan-06	\$887,518.03	\$1,049,098.97	\$1,210,679.92	\$1,372,260.86	\$1,533,841.81	\$1,695,422.75
Feb-06	\$742,430.65	\$935,174.48	\$1,127,918.31	\$1,320,662.15	\$1,513,405.98	\$1,706,149.81
Mar-06	\$630,968.77	\$860,001.81	\$1,089,034.85	\$1,318,067.89	\$1,547,100.93	\$1,776,133.97
Apr-06	\$475,100.85	\$737,405.96	\$999,711.08	\$1,262,016.19	\$1,524,321.30	\$1,786,626.42
May-06	\$298,113.97	\$590,739.71	\$883,365.46	\$1,175,991.21	\$1,468,616.95	\$1,761,242.70
Jun-06	\$131,553.88	\$457,024.95	\$782,496.02	\$1,107,967.09	\$1,433,438.15	\$1,758,909.22
Jul-06	(\$23,572.39)	\$334,534.16	\$692,640.70	\$1,050,747.25	\$1,408,853.79	\$1,766,960.34
Aug-06	(\$192,676.43)	\$196,113.57	\$584,903.58	\$973,693.58	\$1,362,483.58	\$1,751,273.58
Sep-06	(\$359,788.29)	\$61,887.30	\$483,562.89	\$905,238.48	\$1,326,914.08	\$1,748,589.67
Oct-06	(\$549,779.91)	(\$95,908.36)	\$357,963.19	\$811,834.74	\$1,265,706.29	\$1,719,577.84
Nov-06	(\$715,912.90)	(\$231,229.96)	\$253,452.98	\$738,135.92	\$1,222,818.86	\$1,707,501.81
Dec-06	(\$874,931.11)	(\$357,137.54)	\$160,656.03	\$678,449.60	\$1,196,243.17	\$1,714,036.74
Jan-07	(\$1,039,015.40)	(\$489,349.55)	\$60,316.31	\$609,982.16	\$1,159,648.02	\$1,709,313.87
Feb-07	(\$1,200,555.18)	(\$619,554.04)	(\$38,552.90)	\$542,448.24	\$1,123,449.38	\$1,704,450.52
Mar-07	(\$1,367,808.31)	(\$755,087.06)	(\$142,365.81)	\$470,355.43	\$1,083,076.68	\$1,695,797.93
Apr-07	(\$1,538,403.42)	(\$893,830.34)	(\$249,257.26)	\$395,315.82	\$1,039,888.90	\$1,684,461.98
May-07	(\$1,707,353.23)	(\$1,030,992.06)	(\$354,630.90)	\$321,730.27	\$998,091.44	\$1,674,452.61
Jun-07	(\$1,875,205.86)	(\$1,166,342.44)	(\$457,479.03)	\$251,384.38	\$960,247.79	\$1,669,111.20

CapTel Usage: 200 Minutes, 20 Additional Phones
September 2005 Implementation
Refer to Chart C on Page 6

Exhibit 12
Table 3
Page 5

Impact on Fund of Various Surcharges Imposed in September 2005 Assuming Distribtuion of 10 Additional CapTel Phones per Month at 200 Minutes Average Usage
Chart C



CapTel Usge: 200 Minutes; 10 Additional Phones
 September Implementation
 Refer to Table 3 on Page 5