

**Maps**

**1.**

Robert Clarke  
10421 Highway 5  
Marceline, MO 64658

Mike & Sue Ewigman  
10554 Highway 5  
Marceline, MO 64658

Leroy Quinn  
Route 1; 10645 Highway 5 South  
Marceline, MO 64658

**2.**

Zach & Tricia Neblock  
27299 Morton Rd.  
Marceline, MO 64658

Ernestine Welch  
Route 1; 10251 Highway 5  
Marceline, MO 64658

Leonard R. Stallo  
10083 Highway 5  
Marceline, MO 64658

S & S Auto (Leonard R. Stallo)  
10015 Highway 5  
Marceline, MO 64658

John & Pam Gladbach  
10294 Highway 5  
Marceline, MO 64658

Kenneth L. Griffin  
10256 Highway 5  
Marceline, MO 64658

Chad & Amanda Tillery  
10242 Highway 5  
Marceline, MO 64658

**3.**

Daniel C. Ewigman  
34713 Highway WW  
Marceline, MO 64658

**4.**

Dr. David Armin  
Route 2 Box 249; 35127 Highway WW  
Marceline, MO 64658

**5.**

John Huff  
36073 Highway WW  
Marceline, MO 64658

**6.**

John W. McCauslin  
Route 2 Box 251; 35025 Highway WW  
Marceline, MO 64658

**7.**

Steve (Dwayne) Tarpening  
30838 Monroe Dr.  
Marceline, MO 64658

**8.**

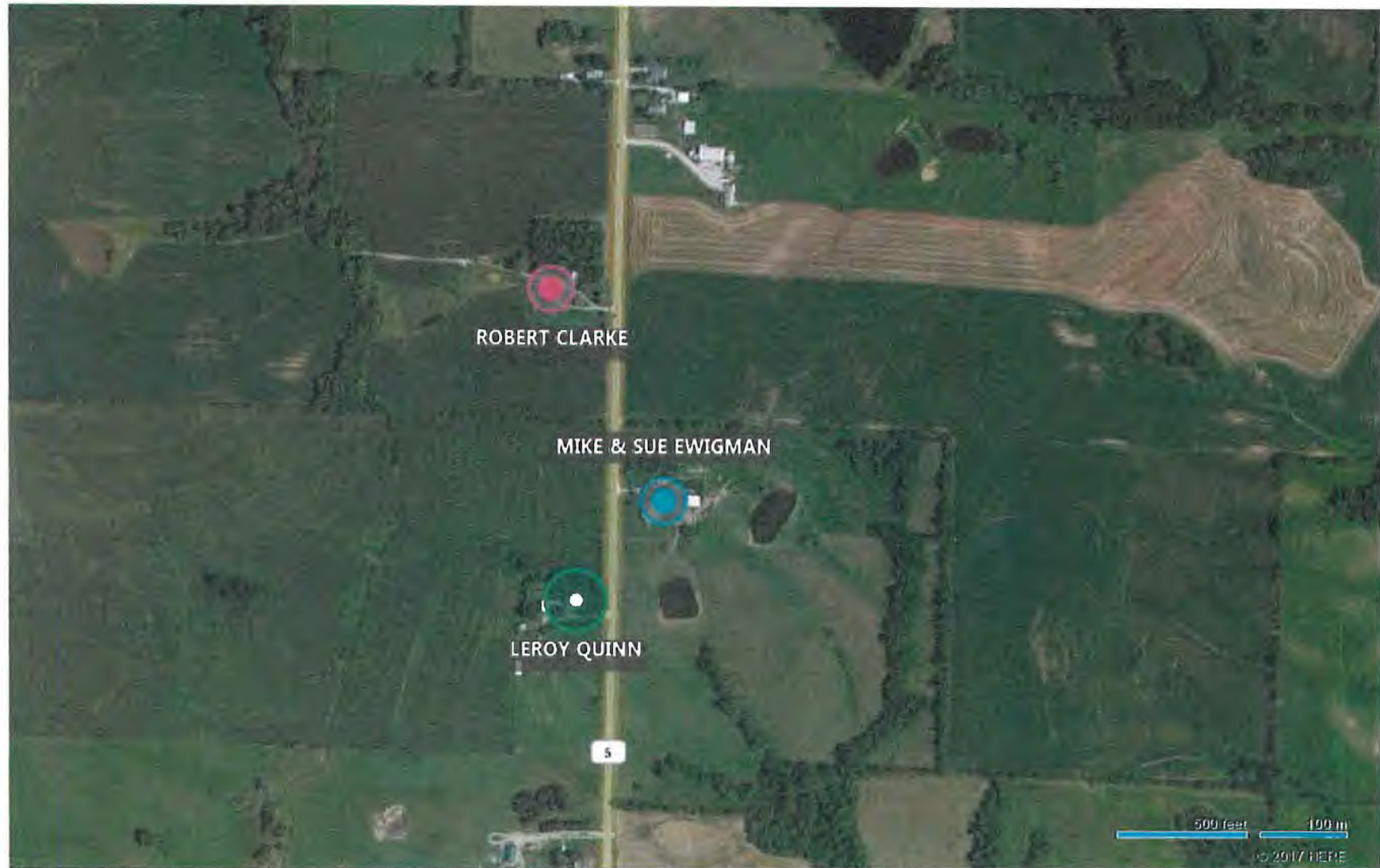
Tom & June Bishop  
35158 Highway WW  
Marceline, MO 64658

**9. & 10.**

Existing Marceline lines.  
Single phase line is shown in blue.  
3-phase line shown in orange.

**11. & 12.**

Existing Macon lines shown in red.



ROBERT CLARKE-10421 HWY 5

MIKE & SUE EWIGMAN-10554 HWY 5

LEROY QUINN-ROUTE 1

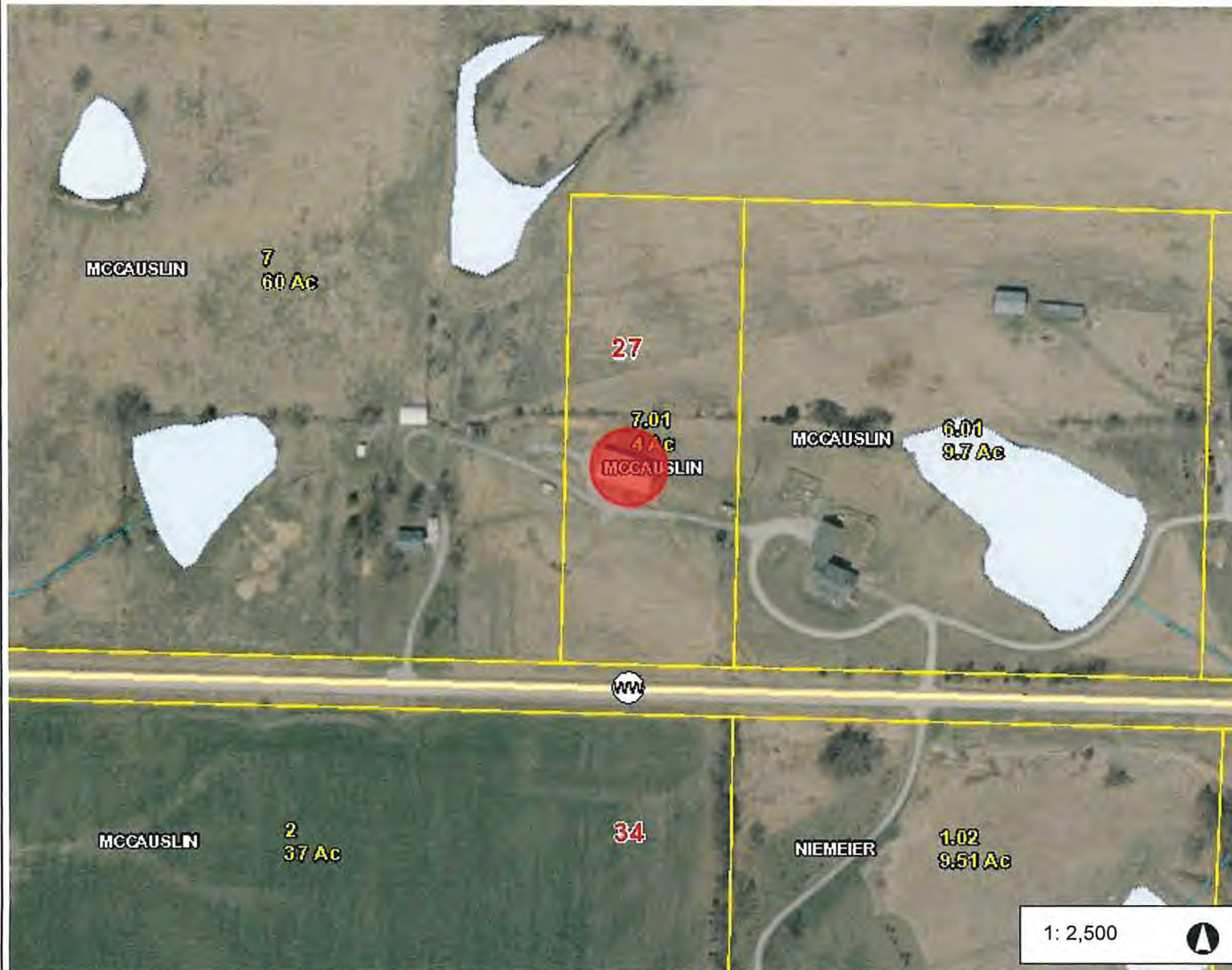




ZACH & TRICIA NEBLOCK -27299 MORTON RD  
LEONARD STALLO-10083 HWY #5  
S&S AUTO-10015 HWY #5  
ERNESTINE WELCH- RT1  
CHAD & AMANDA TILLERY-10242 HWY 5  
KENNETH GRIFFIN-10256 HWY 5  
JOHN & PAM GLADBACH-10294 HWY 5



# Marceline, MO



## Legend

- Manhole
  - Lamp Hole
  - Standard
- Manhole ID
  - ARV
  - Lift Station
  - Gravity Main
  - Force Main
  - Fire Hydrant
  - Water Valve
  - Water Meter
- Control Valves
  - Air Release
  - Altitude
- Water Structure
- Finished Water Main
- Raw Water Main
- Road
  - <all other values>
  - U.S. HIGHWAY, BR 36; U.S. HIGH
  - STATE HIGHWAY, ZZ; STATE HIC
  - HIGHWAY, W; STATE HIGHWAY,
  - STATE HIGHWAY, O; STATE HIC
  - HIGHWAY, JJ; STATE HIGHWAY,
  - STATE HIGHWAY, FF; STATE HIC
  - HIGHWAY, EE; STATE HIGHWAY,
  - DD; STATE HIGHWAY, CC; STATI
  - HIGHWAY, BB; STATE HIGHWAY
  - Lettered State Highway; 17, WW; 1
  - PP; 17, OO; 17, NN; 17, MM; 17, K
  - Numbered State Highway

1: 2,500



416.7 0 208.33 416.7 Feet

This map is a user generated static output from an Internet mapping site and is for reference only. Data layers that appear on this map may or may not be accurate, current, or otherwise reliable.

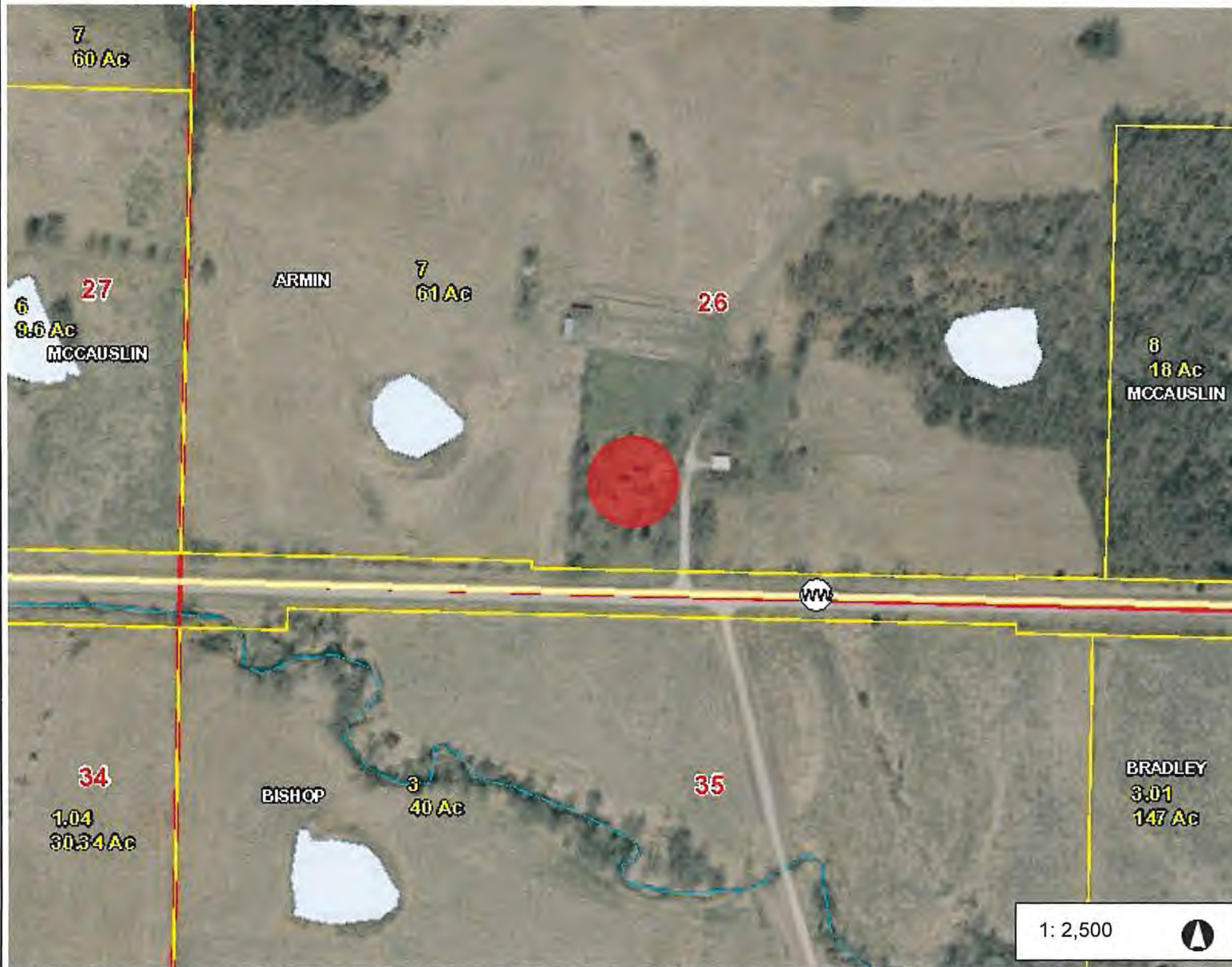
THIS MAP IS NOT TO BE USED FOR NAVIGATION

## Notes

DANIEL EWIGMAN 34713 HWY WW



# Marceline, MO



## Legend

- Manhole
  - Lamp Hole
  - Standard
- Manhole ID
  - ARV
  - Lift Station
- Gravity Main
- Force Main
- Fire Hydrant
- Water Valve
- Water Meter
- Control Valves
  - Air Release
  - Altitude
- Water Structure
- Finished Water Main
- Raw Water Main
- Road
  - <all other values>
  - U.S. HIGHWAY, BR 36; U.S. HIGH
  - STATE HIGHWAY, ZZ; STATE HIG
  - HIGHWAY, W; STATE HIGHWAY,
  - STATE HIGHWAY, O; STATE HIG
  - HIGHWAY, JJ; STATE HIGHWAY,
  - STATE HIGHWAY, FF; STATE HIG
  - HIGHWAY, EE; STATE HIGHWAY,
  - DD; STATE HIGHWAY, CC; STATI
  - HIGHWAY, BB; STATE HIGHWAY
  - Lettered State Highway; 17, WW; 1
  - PP; 17, OO; 17, NN; 17, MM; 17, K
  - Numbered State Highway

## Notes

DR DAVID ARMIN HWY WW RT2  
BOX 249

This map is a user generated static output from an Internet mapping site and is for reference only. Data layers that appear on this map may or may not be accurate, current, or otherwise reliable.  
THIS MAP IS NOT TO BE USED FOR NAVIGATION



# Marceline, MO



## Legend

- Manhole
  - Lamp Hole
  - Standard
- ARV
- Lift Station
- Gravity Main
- Force Main
- Fire Hydrant
- Water Valve
- Water Meter
- Control Valves
  - Air Release
  - Altitude
- Water Structure
- Finished Water Main
- Raw Water Main
- Road
  - <all other values>
  - U.S. HIGHWAY, BR 36; U.S. HIGH
  - STATE HIGHWAY, ZZ; STATE HIG
  - HIGHWAY, W; STATE HIGHWAY,
  - STATE HIGHWAY, O; STATE HIG
  - HIGHWAY, JJ; STATE HIGHWAY,
  - STATE HIGHWAY, FF; STATE HIG
  - HIGHWAY, EE; STATE HIGHWAY
  - DD; STATE HIGHWAY, CC; STATI
  - HIGHWAY, BB; STATE HIGHWAY
  - Lettered State Highway; 17, WW; 1
  - PP; 17, OO; 17, NN; 17, MM; 17, K
  - Numbered State Highway

## Notes

John Huff 36073 HWY WW

This map is a user generated static output from an Internet mapping site and is for reference only. Data layers that appear on this map may or may not be accurate, current, or otherwise reliable.  
THIS MAP IS NOT TO BE USED FOR NAVIGATION



# Marceline, MO



## Legend

### Manhole

Lamp Hole

Standard

### Manhole ID

ARV

Lift Station

Gravity Main

Force Main

Fire Hydrant

Water Valve

Water Meter

### Control Valves

Air Release

Altitude

### Water Structure

Finished Water Main

Raw Water Main

### Road

<all other values>

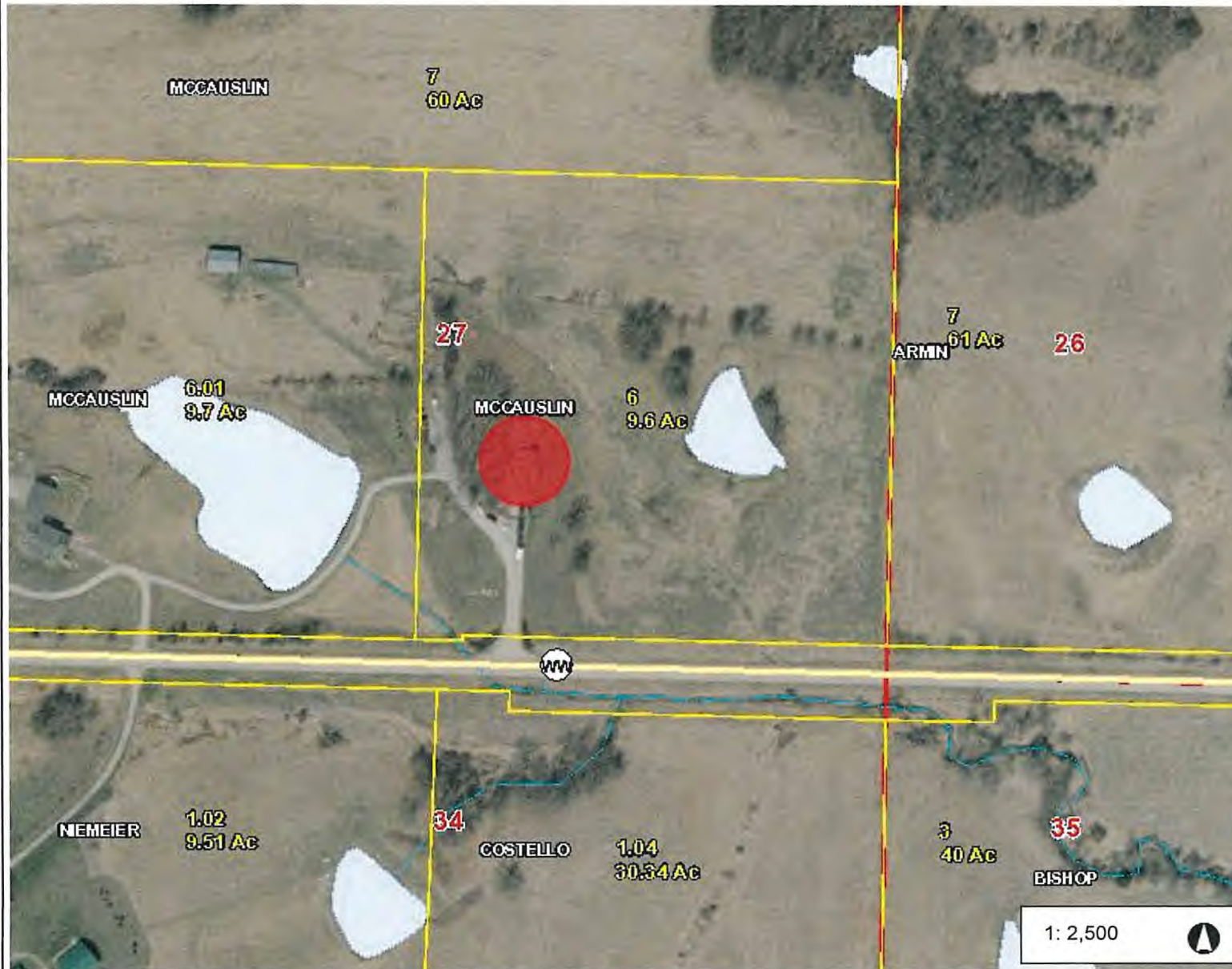
U.S. HIGHWAY, BR 36; U.S. HIGH

STATE HIGHWAY, ZZ; STATE HIGHWAY, W; STATE HIGHWAY, O; STATE HIGHWAY, JJ; STATE HIGHWAY, FF; STATE HIGHWAY, EE; STATE HIGHWAY, DD; STATE HIGHWAY, CC; STATE HIGHWAY, BB; STATE HIGHWAY, Lettered State Highway; 17, VVW; 1 PP; 17, OO; 17, NN; 17, MM; 17, K

Numbered State Highway

## Notes

JOHN MCCAUSLIN HWY WW RT2 BOX 251



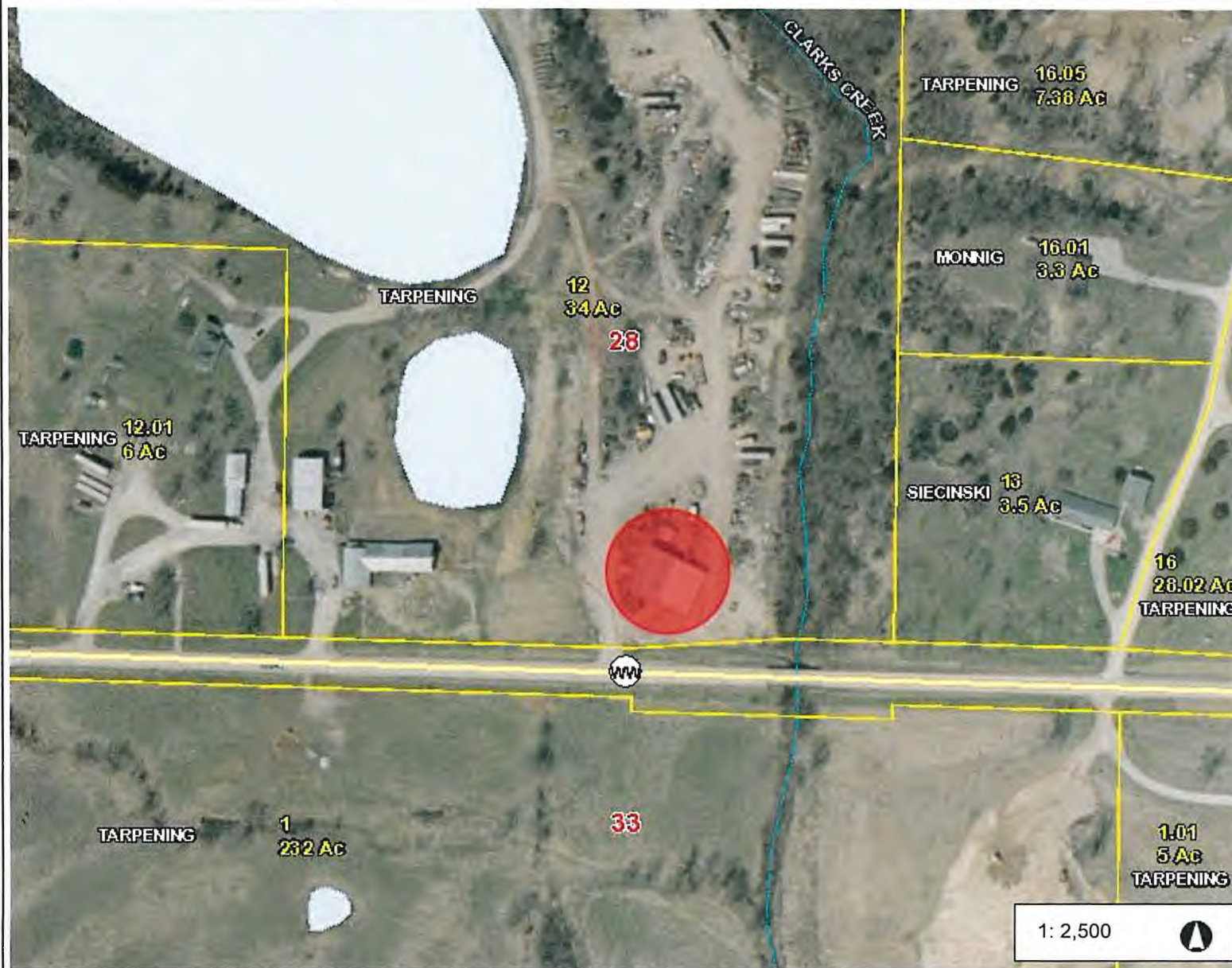
1: 2,500

This map is a user generated static output from an Internet mapping site and is for reference only. Data layers that appear on this map may or may not be accurate, current, or otherwise reliable.

THIS MAP IS NOT TO BE USED FOR NAVIGATION



# Marceline, MO



## Legend

- Manhole
  - Lamp Hole
  - Standard
- Manhole ID
  - ARV
  - Lift Station
  - Gravity Main
  - Force Main
  - Fire Hydrant
  - Water Valve
  - Water Meter
- Control Valves
  - Air Release
  - Altitude
- Water Structure
- Finished Water Main
- Raw Water Main
- Road
  - <all other values>
  - U.S. HIGHWAY, BR 36; U.S. HIGH
  - STATE HIGHWAY, ZZ; STATE HIG
  - HIGHWAY, W; STATE HIGHWAY,
  - STATE HIGHWAY, O; STATE HIG
  - HIGHWAY, JJ; STATE HIGHWAY,
  - STATE HIGHWAY, FF; STATE HIG
  - HIGHWAY, EE; STATE HIGHWAY
  - DD; STATE HIGHWAY, CC; STATI
  - HIGHWAY, BB; STATE HIGHWAY,
  - Lettered State Highway; 17, VVV; 1
  - PP; 17, OO; 17, NN; 17, MM; 17, K
  - Numbered State Highway

## Notes

STEVE TARPENING 30838 MONROE DR. (GARAGE)

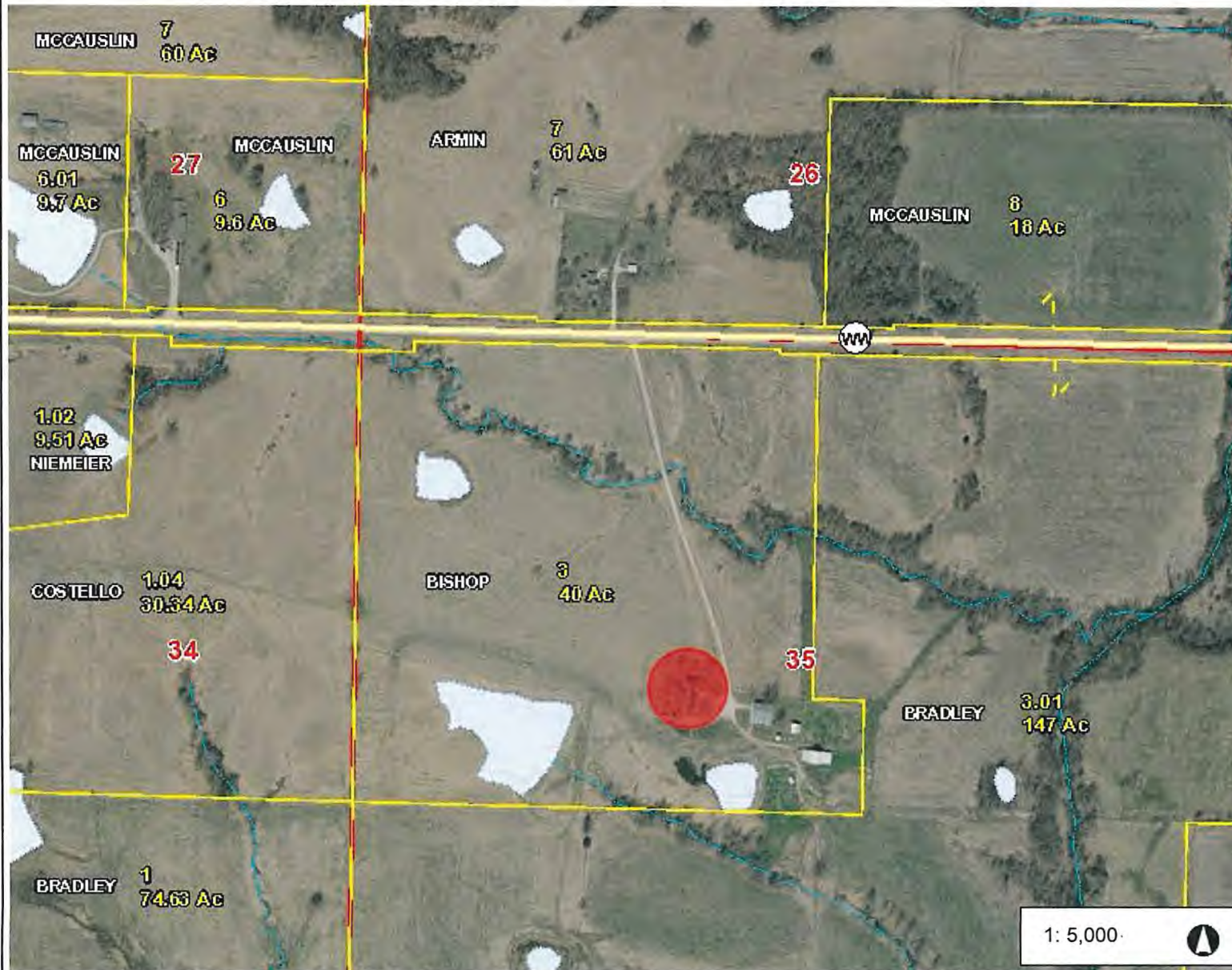
416.7 0 208.33 416.7 Feet

This map is a user generated static output from an Internet mapping site and is for reference only. Data layers that appear on this map may or may not be accurate, current, or otherwise reliable.

THIS MAP IS NOT TO BE USED FOR NAVIGATION



# Marceline, MO



## Legend

- Manhole
  - Lamp Hole
  - Standard
- ARV
- Lift Station
- Gravity Main
- Force Main
- Fire Hydrant
- Water Valve
- Water Meter
- Control Valves
  - Air Release
  - Altitude
- Water Structure
- Finished Water Main
- Raw Water Main
- Road
  - <all other values>
  - U.S. HIGHWAY, BR 36; U.S. HIGH
  - STATE HIGHWAY, ZZ; STATE HIG
  - HIGHWAY, W; STATE HIGHWAY,
  - STATE HIGHWAY, O; STATE HIG
  - HIGHWAY, JJ; STATE HIGHWAY,
  - STATE HIGHWAY, FF; STATE HIG
  - HIGHWAY, EE; STATE HIGHWAY,
  - DD; STATE HIGHWAY, CC; STATI
  - HIGHWAY, BB; STATE HIGHWAY
  - Lettered State Highway; 17, WW; 1
  - PP; 17, OO; 17, NN; 17, MM; 17, K
  - Numbered State Highway

1: 5,000



833.3 0 416.67 833.3 Feet

This map is a user generated static output from an Internet mapping site and is for reference only. Data layers that appear on this map may or may not be accurate, current, or otherwise reliable.

THIS MAP IS NOT TO BE USED FOR NAVIGATION

## Notes

TOM & JUNE BISHOP 35158 HWY  
WW

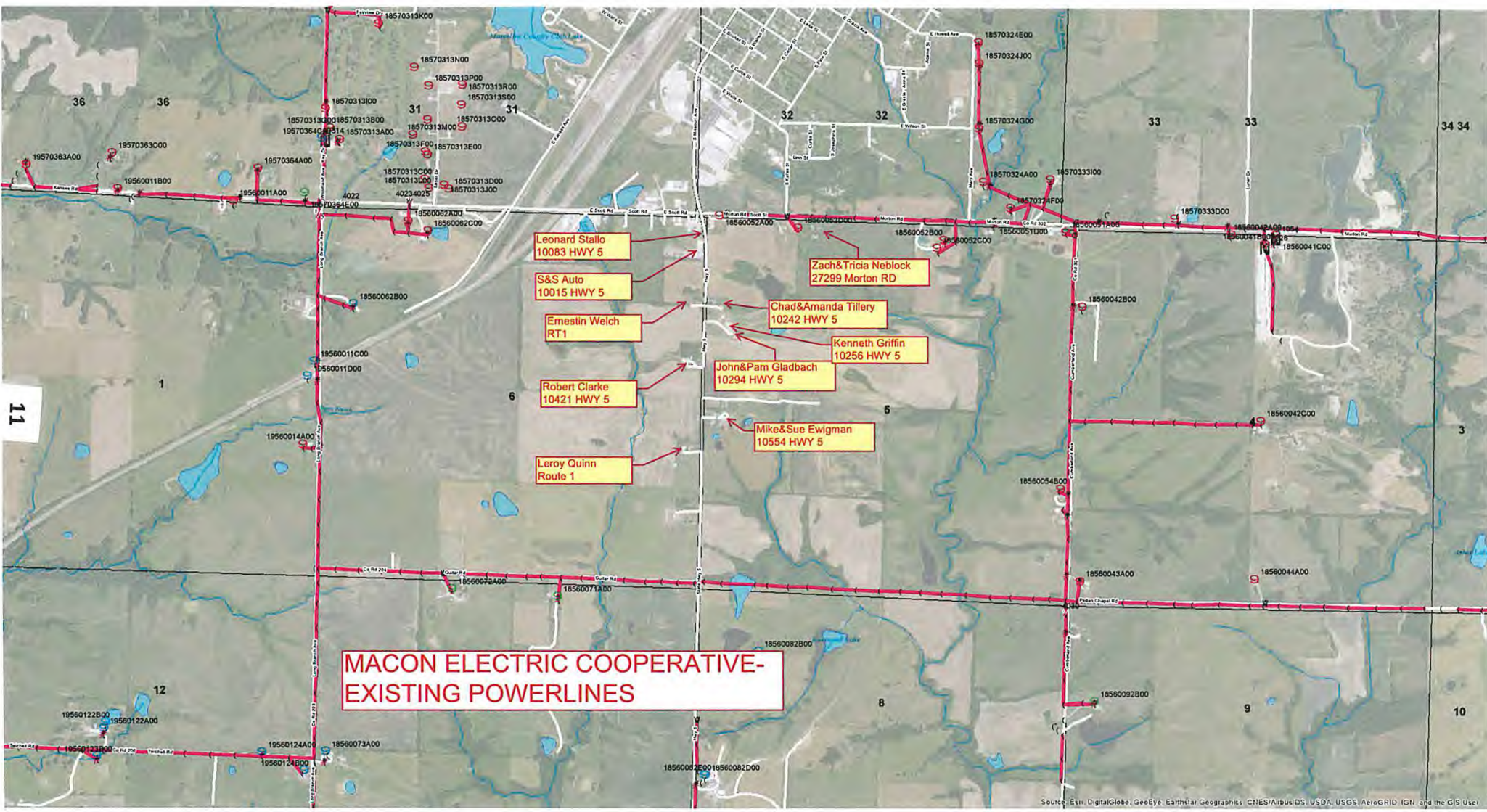




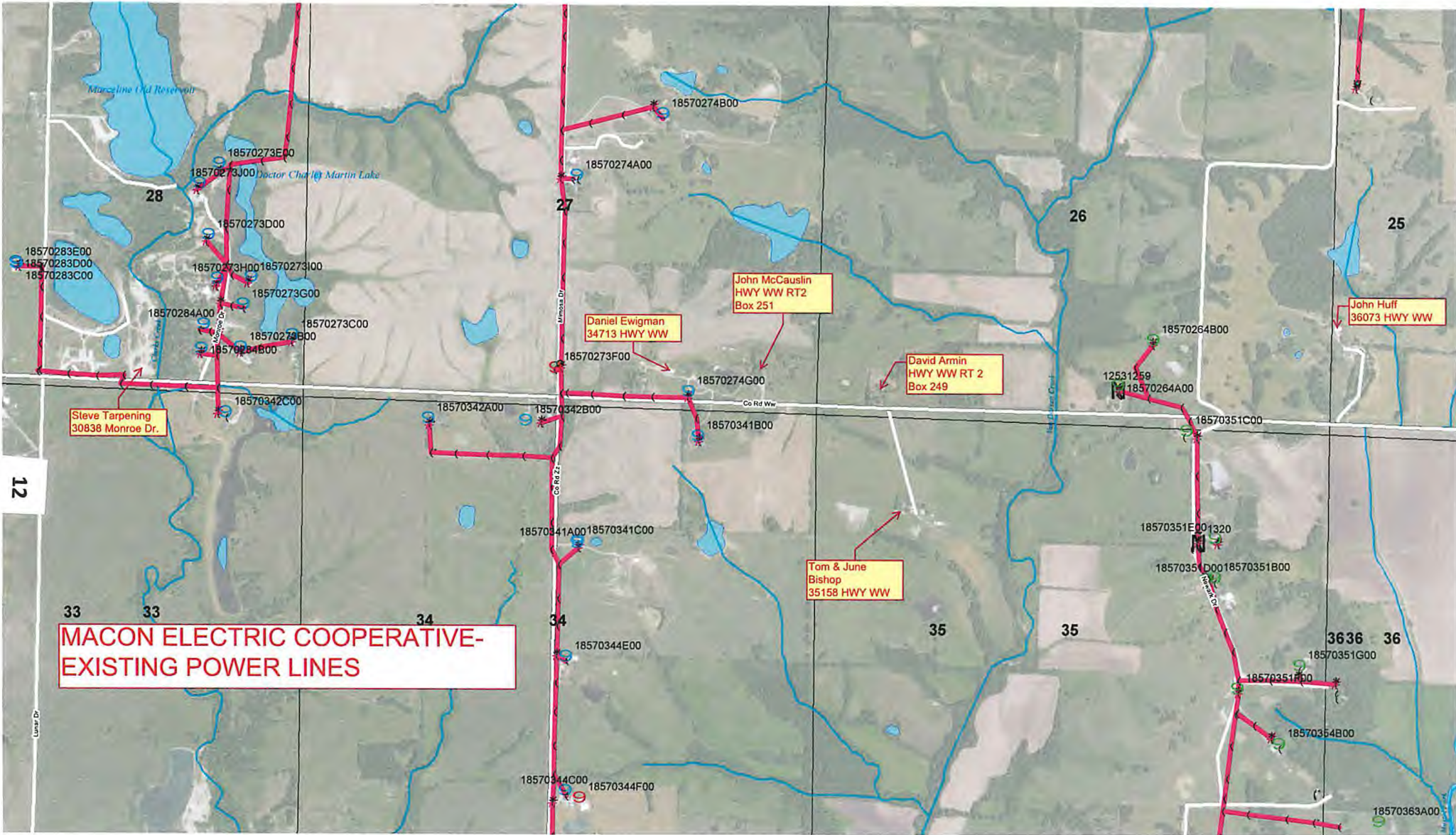












MACON ELECTRIC COOPERATIVE-  
EXISTING POWER LINES

Steve Tarpening  
30838 Monroe Dr.

Daniel Ewigman  
34713 HWY WW

John McCauslin  
HWY WW RT2  
Box 251

David Armin  
HWY WW RT 2  
Box 249

Tom & June  
Bishop  
35158 HWY WW

John Huff  
36073 HWY WW