

## Plans and Specifications

Co-Mo Electric Cooperative, Inc. (Co-Mo) plans to serve the first two phases of the Fox Hollow subdivision from the existing facilities that are currently serving load on adjacent parcels. Co-Mo has enough supplies and material in store to build phase one and two. As the subdivision grows into phase three and beyond, Co-Mo has engineered plans to bring additional facilities to the Fox Hollow subdivision. Easements for these additional facilities have been acquired from the landowners and recorded with Cooper County. Road crossing permits are being actively worked on. Co-Mo has overlaid all the needed underground electrical facilities to serve Fox Hollow in its entirety. Co-Mo is also working on upgrades in the area to increase capacity of its facilities along State Highway 98 which borders Fox Hollow on the north.

The attached map shows Co-Mo's current electrical facilities in green and the electrical layout Co-Mo intends to use to serve within Fox Hollow in red.

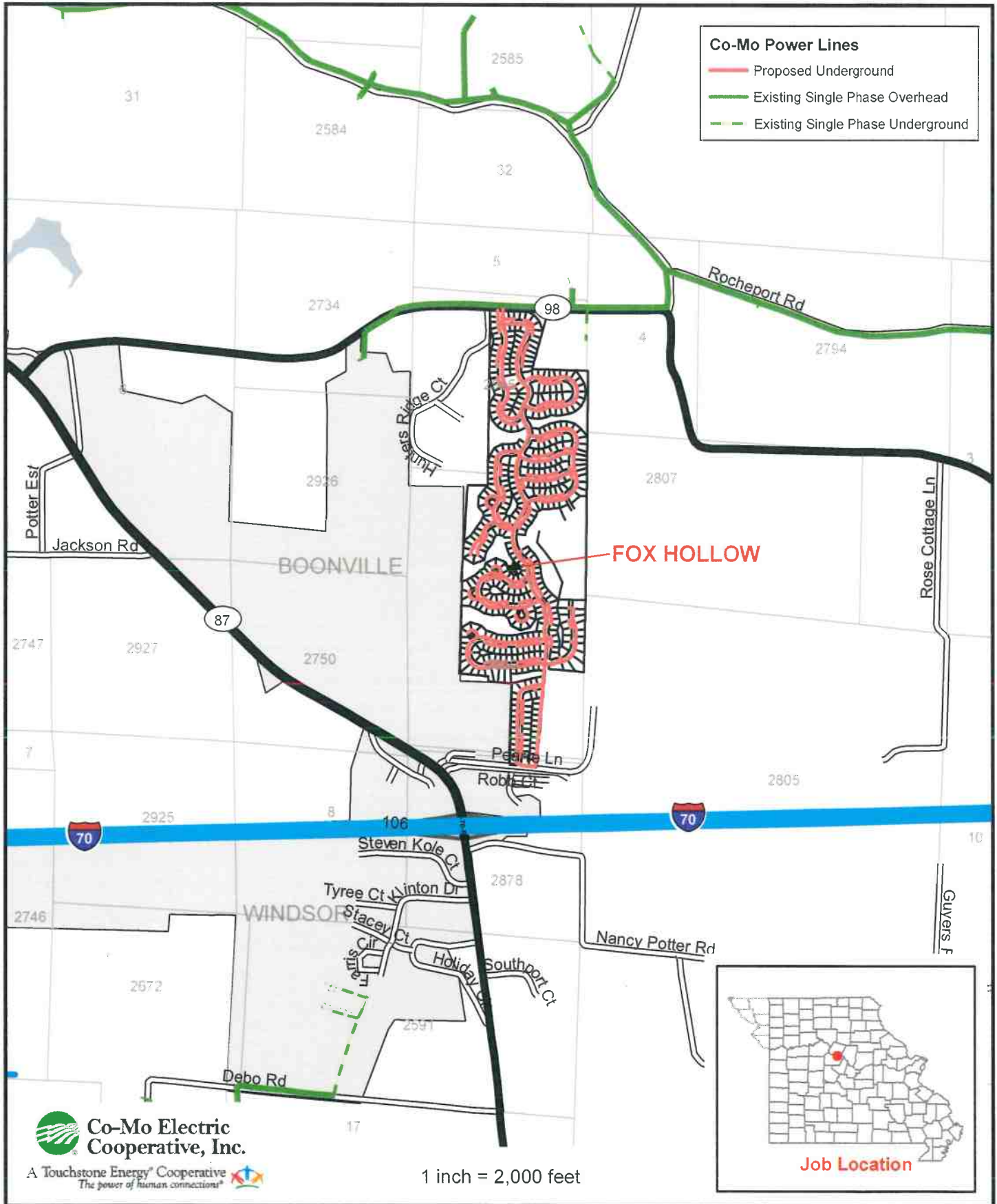
Co-Mo's general plans on the underground for the subdivision are as follows:

All primary is energized at 25kV. 3ph 4/0 AL primary placed 4ft deep, loop fed from Co-Mo's already existing facilities. 1ph 1/0 AL primary tapped from the 4/0 3ph junctions and looped back to the 4/0. Feedthrough transformer rated between 75 and 100kVA will be used to step down the voltage to 120/240V for servicing the residential structure(s). 6-12 residential structures will be served from one transformer. 350MCM and 500MCM underground secondary triplex installed in SCH80 glued conduit 3ft deep will be used to reach edges of the lot(s). Co-Mo supplies the meterbase that is a heavy duty 200amp rated Durham socket with service disconnect and provision for auxiliary breaker(s). Detailed plans and staking sheets for the transformer placement, conductor placement and road crossings have been made and will be produced on request.

# Co-Mo Electric Cooperative, Inc Service Proposal

## for Fox Hollow Subdivision

TRACT LOCATED IN SECTION 5, TOWNSHIP 48 NORTH, RANGE 16 WEST AND  
SECTION 8, TOWNSHIP 48 NORTH, RANGE 16 WEST  
BOONVILLE, COOPER COUNTY, MISSOURI



**\*Underground Power View\***