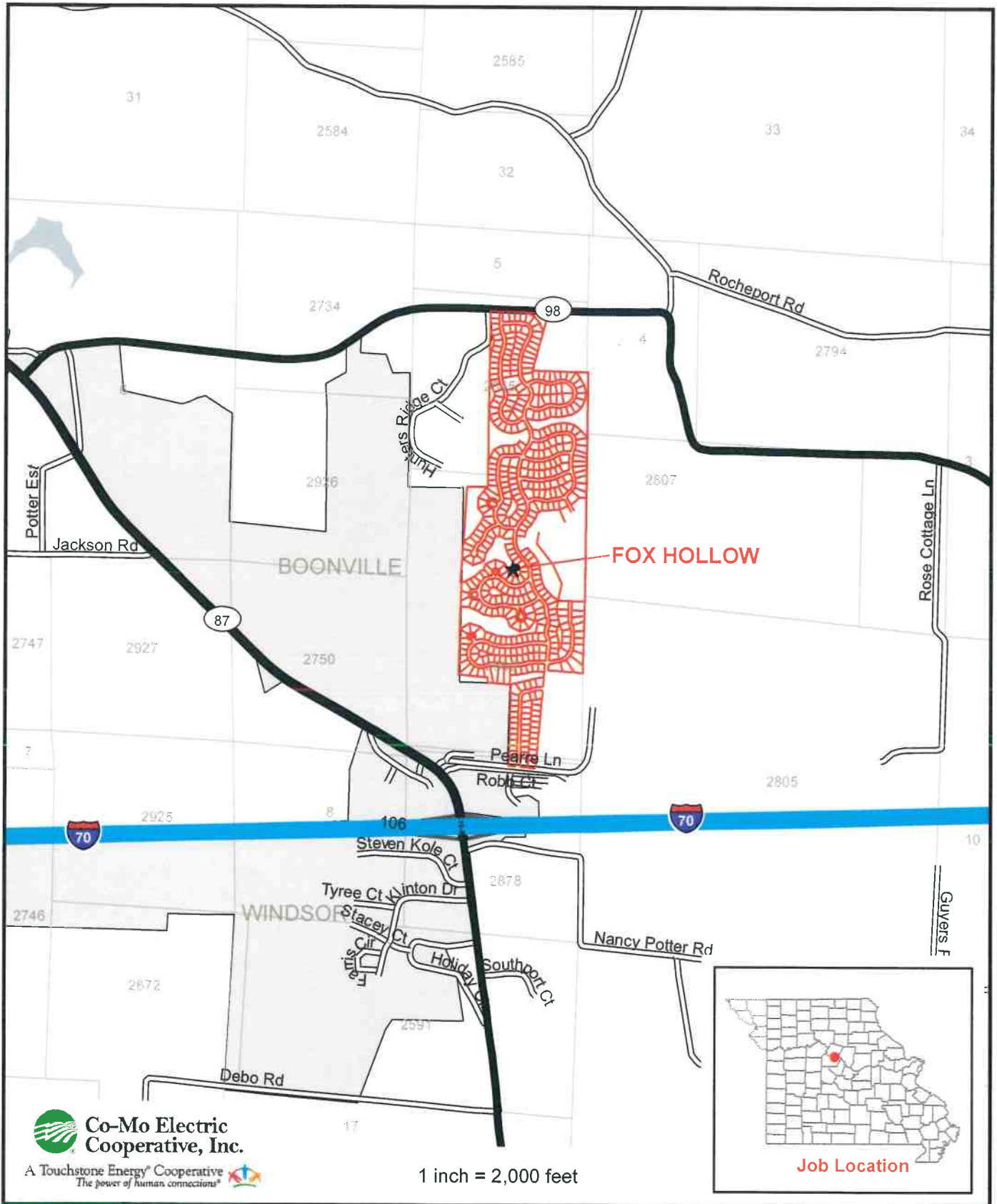


# Co-Mo Electric Cooperative, Inc Service Proposal

## for Fox Hollow Subdivision

A TRACT LOCATED IN SECTION 5, TOWNSHIP 48 NORTH, RANGE 16 WEST AND  
SECTION 8, TOWNSHIP 48 NORTH, RANGE 16 WEST  
BOONVILLE, COOPER COUNTY, MISSOURI



*\*Lot Lines View\**

# APPENDIX F









