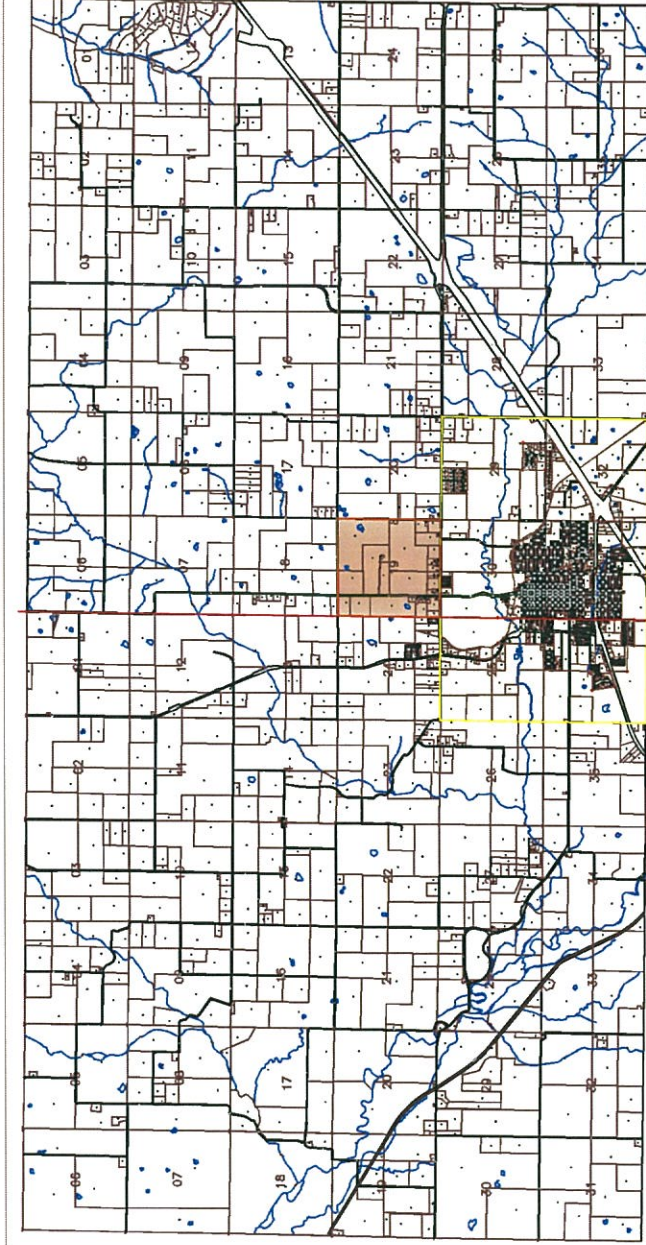


LAWRENCE COUNTY  
SECTION 19, TOWNSHIP 28 NORTH, RANGE 26 WEST



T 28N R 27W  
T 28N R 26W  
EXISTING  
PROPOSED SEC 19

DWG:	T 28N R 26W SEC 19	
1		
2		
3		
REV:	DESCRIPTION	DATE BY
DRAWN BY	L. FENSKE	VR
DATE	10/01/2012	N.T.S.

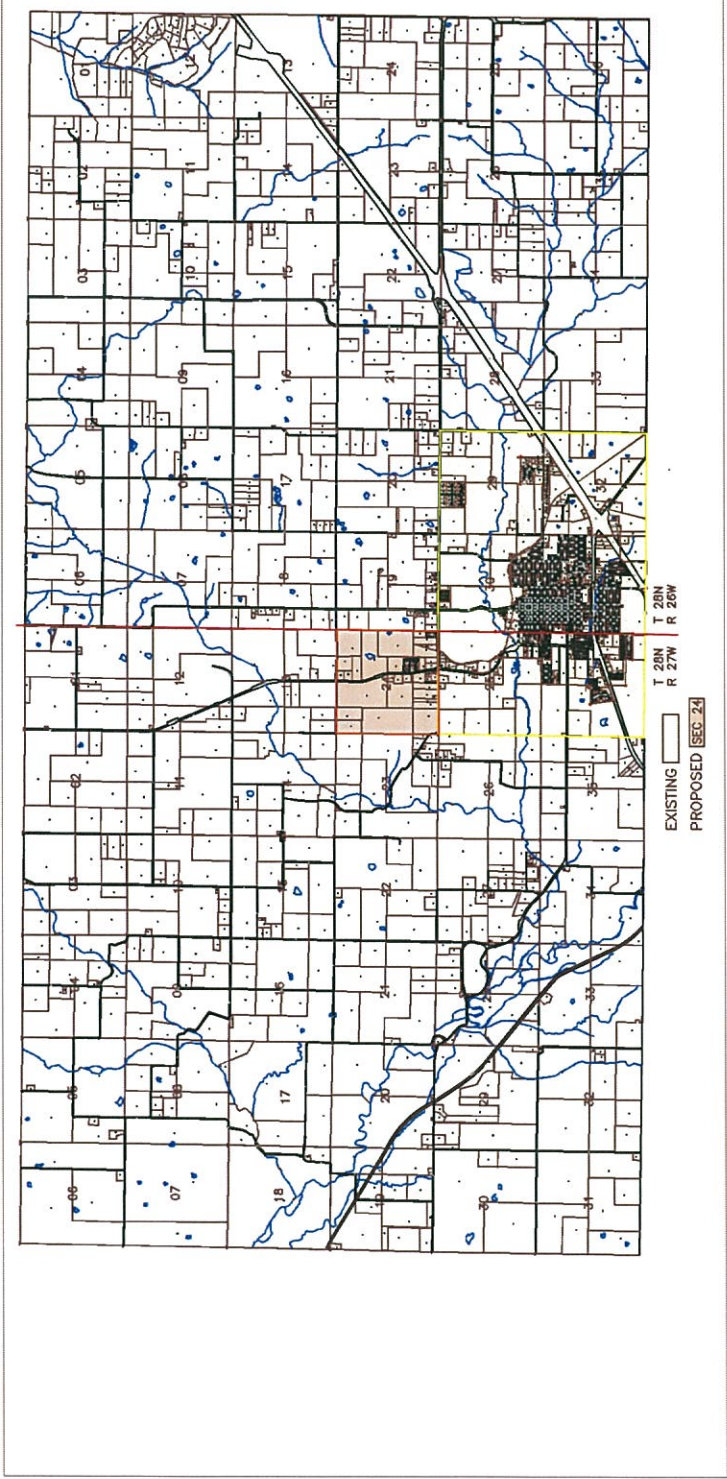



MISSOURI GAS ENERGY  
MOUNT VERNON, MO  
LAWRENCE COUNTY  
MISSOURI GAS ENERGY  
CERTIFICATION REQUEST

ENGINEERING DEPARTMENT  
207 PINE ST  
MORETT, MISSOURI 65708

DISTRICT NO.  
SHEET NO.  
1 OF 1

LAWRENCE COUNTY  
SECTION 24, TOWNSHIP 28 NORTH, RANGE 27 WEST



 MISSOURI GAS ENERGY		ENGINEERING DEPARTMENT 207 PINE ST MONETT, MISSOURI 65708			
DISTRICT NO. MOUNT VERNON, MO LAWRENCE COUNTY		SHEET NO. MISSOURI GAS ENERGY CERTIFICATION REQUEST 1 OF 1			
DWG:	T 28N R 27W SEC 24	REV.	DESCRIPTION	DATE	BY
1		1	ISSUED FOR PERMIT		
2		2	REVISED		
3		3	REVISED		
DATE:	L. FENSKER	SCALE:	N.T.S.		