



2800 SW Windermere Drive
Topeka, KS 66614-4895

785-862-2001 / Fax: 785-862-2003

Tom Maurer
Director
tmaurer@tssks.com

January 13, 2010

Secretary of the Commission
Missouri Public Service Commission
PO Box 360
Jefferson City, MO 65102-0360

Dear Secretary:

Enclosed for filing with the Commission is an original copy requesting a name change for Everest Midwest Licensee LLC d/b/a SureWest for Missouri P.S.C. Tariffs 4, 5 and 6. SureWest is in the process of renaming the Everest business name to reflect its NASDAQ-traded name of SureWest. Henceforth, Everest Midwest Licensee LLC d/b/a SureWest will be known as SureWest Kansas Licenses, LLC. The name change became effective in its state of incorporation, Delaware, on May 29, 2009 and received its Certification from the Secretary of State to do business in Missouri on October 23, 2009.

With the effective date of this filing, Everest Midwest Licensee LLC d/b/a SureWest will be known as SureWest Kansas Licenses, LLC. Enclosed with this filing are the following:

- 1) Delaware Certificate of Amendment.
- 2) Secretary of State Certificate of Amendment.
- 3) P.S.C Tariff No. 4, Adoption Notice, 1st Revised Adoption Sheet and 3rd Revised Sheet 1, each sheet bearing an issue date of January 13, 2010 and an effective date of February 15, 2010.
- 4) P.S.C Tariff No. 5, Adoption Notice, 1st Revised Adoption Sheet and Title Section, 3rd Revised Sheet 1, each sheet bearing an issue date of January 13, 2010 and an effective date of February 15, 2010.
- 5) P.S.C Tariff No. 6, Adoption Notice, 1st Revised Adoption Sheet and 3rd Revised Title Sheet, each sheet bearing an issue date of January 13, 2010 and an effective date of February 15, 2010.
- 6) An organizational chart that depicts how SureWest Kansas Licenses, LLC fits within SureWest's corporate organization.

If you have questions or require additional information concerning the name change, please contact:

Greg Gierczak
Executive Director – External Relations
8150 Industrial Avenue, Bldg. A
Roseville, CA 95678
(916) 786-1440
(916) 786-1877 facsimile
g.gierczak@surewest.com

SureWest also requests that the above information be substituted as the official contact for all notices regarding its certificated authority. In addition, SureWest would like to confirm that you are aware that its local office in Lenexa has relocated. The local office address for SureWest is now and is reflected in the attached tariffs:

14859 W. 95th Street
Lenexa, KS 66215

In addition to the above changes, also enclosed for filing with the Commission is an original copy of revisions to the following SureWest Kansas Licenses, LLC Missouri P.S.C. tariffs, each sheet bearing an issue date of January 13, 2010 and an effective date of February 15, 2010:

- No. 5, Section 5, 3rd Revised Page 17
- No. 5, Section 6, 1st Revised Page 8
- No. 6, 3rd Revised Sheet 57
- No. 6, 1st Revised Sheet 58
- No. 6, 1st Revised Sheet 59
- No. 6, 2nd Revised Sheet 60

With this filing SureWest is introducing Foreign Exchange Service and adding rates for Digital Trunked Transport (DTT) Service. The rates for DTT service have been inadvertently left out of the tariff.

Upon approval, please return a stamped copy of the tariff sheets. Please contact me on 785-862-2001 if you have any questions regarding this filing.

Sincerely,

/s/ Tom Maurer

Tom Maurer
Director

Enclosures

pc: Greg Gierczak, SureWest

Delaware

PAGE 1

The First State

I, JEFFREY W. BULLOCK, SECRETARY OF STATE OF THE STATE OF DELAWARE, DO HEREBY CERTIFY THAT THE SAID "EVEREST MIDWEST LICENSEE LLC", FILED A CERTIFICATE OF AMENDMENT, CHANGING ITS NAME TO "SUREWEST KANSAS LICENSES, LLC", THE TWENTY-NINTH DAY OF MAY, A.D. 2009, AT 11:30 O'CLOCK A.M.

AND I DO HEREBY FURTHER CERTIFY THAT THE SAID "EVEREST MIDWEST LICENSEE LLC" WAS FORMED ON THE FIFTEENTH DAY OF SEPTEMBER, A.D. 2000.

AND I DO HEREBY FURTHER CERTIFY THAT THE AFORESAID LIMITED LIABILITY COMPANY IS DULY FORMED UNDER THE LAWS OF THE STATE OF DELAWARE AND IS IN GOOD STANDING AND HAS A LEGAL EXISTENCE NOT HAVING BEEN CANCELLED OR DISSOLVED SO FAR AS THE RECORDS OF THIS OFFICE SHOW AND IS DULY AUTHORIZED TO TRANSACT BUSINESS.

3288798 8320

090891539

You may verify this certificate online
at corp.delaware.gov/authver.shtml




Jeffrey W. Bulluck, Secretary of State
AUTHENTICATION: 7573694

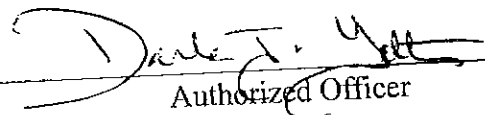
DATE: 10-08-09

**STATE OF DELAWARE
CERTIFICATE OF AMENDMENT
TO CHANGE NAME OF
EVEREST MIDWEST LICENSEE LLC TO
SUREWEST KANSAS LICENSES, LLC**

1. Name of Limited Liability Company: Everest Midwest Licensee LLC.
2. The Certificate of Formation of the limited liability company is hereby amended as follows:

The name of this limited liability company is SureWest Kansas Licenses, LLC

IN WITNESS WHEREOF, the undersigned have executed this Certificate on the
13th day of May, A.D.2009,

By: 
Authorized Officer

Title: Secretary

Name: Darla J. Yetter



State of Delaware

SECRETARY OF STATE
DIVISION OF CORPORATIONS
P.O. BOX 898
DOVER, DELAWARE 19903

RECEIVED
090574491
JUL 13 2009

SUREWEST
EXECUTIVE

9631413
SUREWEST COMMUNICATIONS
PO BOX 969
ROSEVILLE

CA 95661

07-02-2009

ATTN: DARLA J YETTER

| DESCRIPTION | AMOUNT |
|----------------------------------|--------|
| SUREWEST KANSAS LICENSES, LLC | |
| 3288798 0240 Amendment; Domestic | |
| Amendment Fee | 80.00 |
| Court Municipality Fee, Dover | 20.00 |
| FILING TOTAL | 100.00 |
| CHARGED TO ACCOUNT | 100.00 |

STATE OF MISSOURI



Robin Carnahan
Secretary of State

CERTIFICATE OF AMENDMENT

I, Robin Carnahan, Secretary of State of the State of Missouri, do hereby certify that

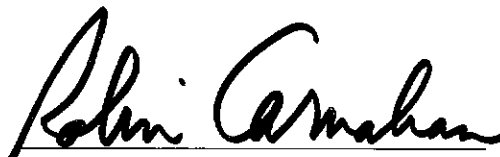
SUREWEST KANSAS LICENSES, LLC
FL0042980

Formerly

EVEREST MIDWEST LICENSEE LLC

an entity organized under the laws of the State of Delaware, has delivered to me and that I have filed its Certificate of Amendment of its Articles of Organization; that said entity has in all respects complied with the requirements of law governing the Amendment of Articles of Organization and the said Articles are amended in accordance therewith.

IN TESTIMONY WHEREOF, I hereunto
set my hand and cause to be affixed the
GREAT SEAL of the State of Missouri.
Done at the City of Jefferson, this
23rd day of October, 2009.


Secretary of State





State of Missouri
Robin Carnahan, Secretary of State

Corporations Division
PO Box 778 / 600 W. Main St., Rm. 322
Jefferson City, MO 65102

File Number:
FL0042980
Date Filed: 10/23/2009
Robin Carnahan
Secretary of State

**Amendment of a
Foreign Limited Liability Company**
(Submit with filing fee of \$25.00)

1. The name of the foreign limited liability company is Everest Midwest Licensee LLC

Missouri Charter #: FL0042980

2. The foreign the limited liability company was formed under the laws of Delaware on the date of September 15, 2000
State of jurisdiction
month/day/year

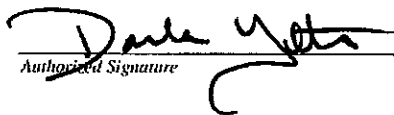
3. The foreign limited liability company's certificate of registration is hereby amended as follows:

The name of the business entity is SureWest Kansas Licenses, LLC

4. The effective date of this document is the date it is filed by the Secretary of State of Missouri unless a future date is otherwise indicated: _____
month/day/year

5. The amendment shall include a certificate of existence or document of similar import duly authenticated by the secretary of state or other official having custody of the records in the state or country under whose laws it is registered. Such document should be dated within sixty calendar days from the filing for acceptance.

In Affirmation thereof, the facts stated above are true and correct:
(The undersigned understands that false statements made in this filing are subject to the penalties provided under Section 575.040. RSMo)


Authorized Signature

Darla J. Yetter
Printed Name

9/29/09
Date

Name and address to return filed document:
Name: SureWest Communications, Attention: Kerri Bessey
Address: PO Box 969
City, State, and Zip Code: Roseville, CA 95678

State of Missouri
Amend/Restate - LLC/LP/LLP/LLLP 2 Page(s)



T0929901651

Adoption Notice

SureWest Kansas Licenses, LLC

SureWest Kansas Licenses, LLC hereby adopts, ratifies, and makes its own, in every respect as if the same had been originally filed by it, all schedules, rules, notices, concurrences, schedule agreements, divisions, authorities or other instruments whatsoever, filed with the Missouri Public Service Commission by Everest Midwest Licensee LLC d/b/a SureWest.

Issued: January 13, 2010

Effective: February 15, 2010

Steve Oldham, President and CEO
SureWest Kansas Licenses, LLC
14859 W. 95th Street
Lenexa, KS 66215

REGULATIONS AND SCHEDULES
APPLICABLE TO
LOCAL EXCHANGE SERVICES
WITHIN THE STATE OF MISSOURI

ISSUED BY

(T) SUREWEST KANSAS LICENSES, LLC

(T) This Tariff contains the descriptions, regulations, and rates applicable to the furnishing of facilities-based Basic Local Exchange telecommunication services by SureWest Kansas Licenses, LLC (the "Company"). This tariff applies for services furnished within the Company's authorized service area within the State of Missouri. This tariff is on file with the Missouri Public Service Commission, and copies may be inspected, during normal business hours, at the following location:

(T) SureWest Kansas Licenses, LLC
14859 W. 95th Street
Lenexa, Kansas 66215

The Company and the services offered hereunder have been classified as "competitive" by the Missouri Public Service Commission. This tariff applies to all exchanges of the Company, and it applies to both residential and business services.

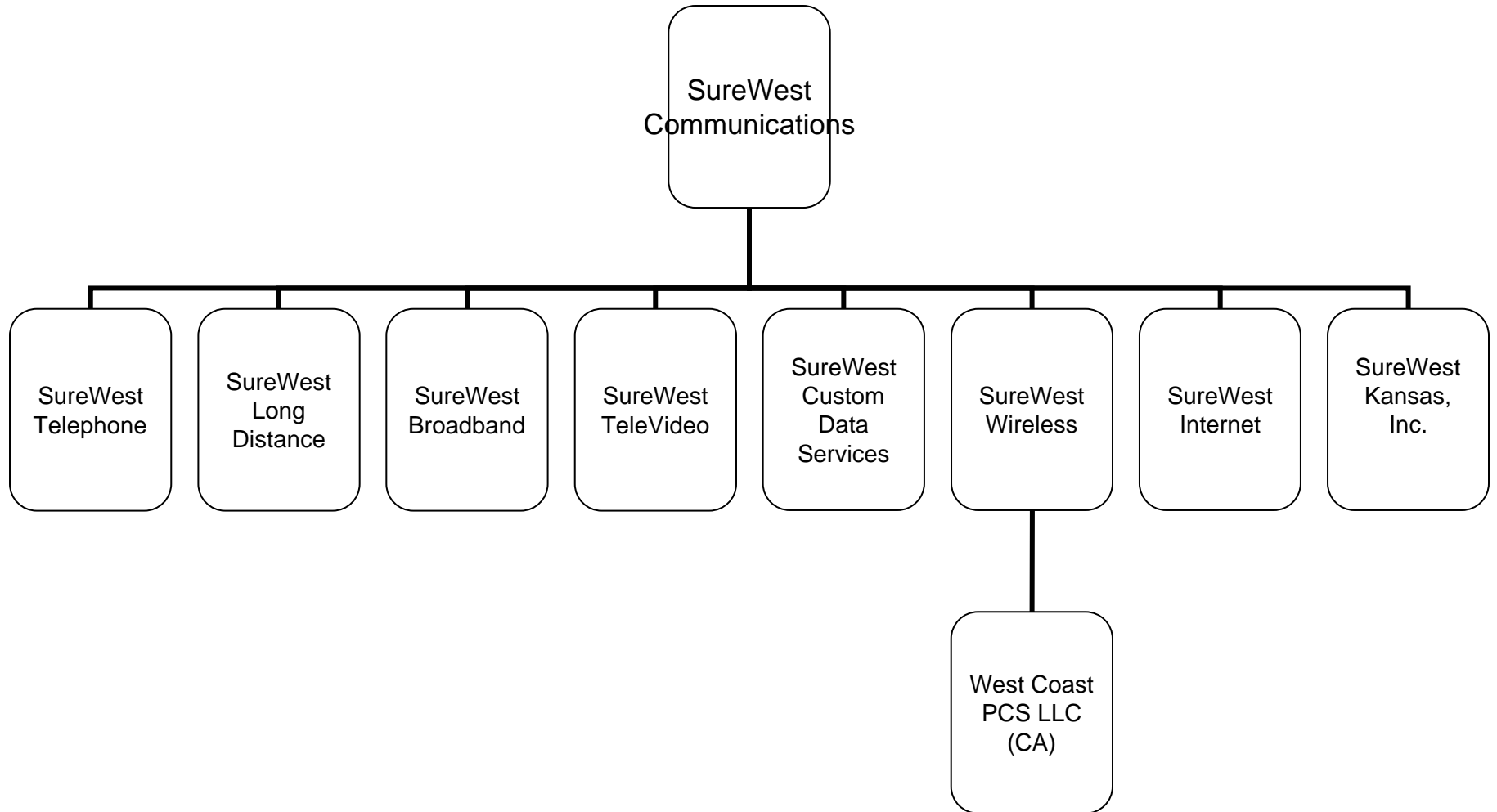
Issued: January 13, 2010

Effective: February 15, 2010

Steve Oldham, President and CEO
SureWest Kansas Licenses, LLC
14859 W. 95th Street
Lenexa, KS 66215

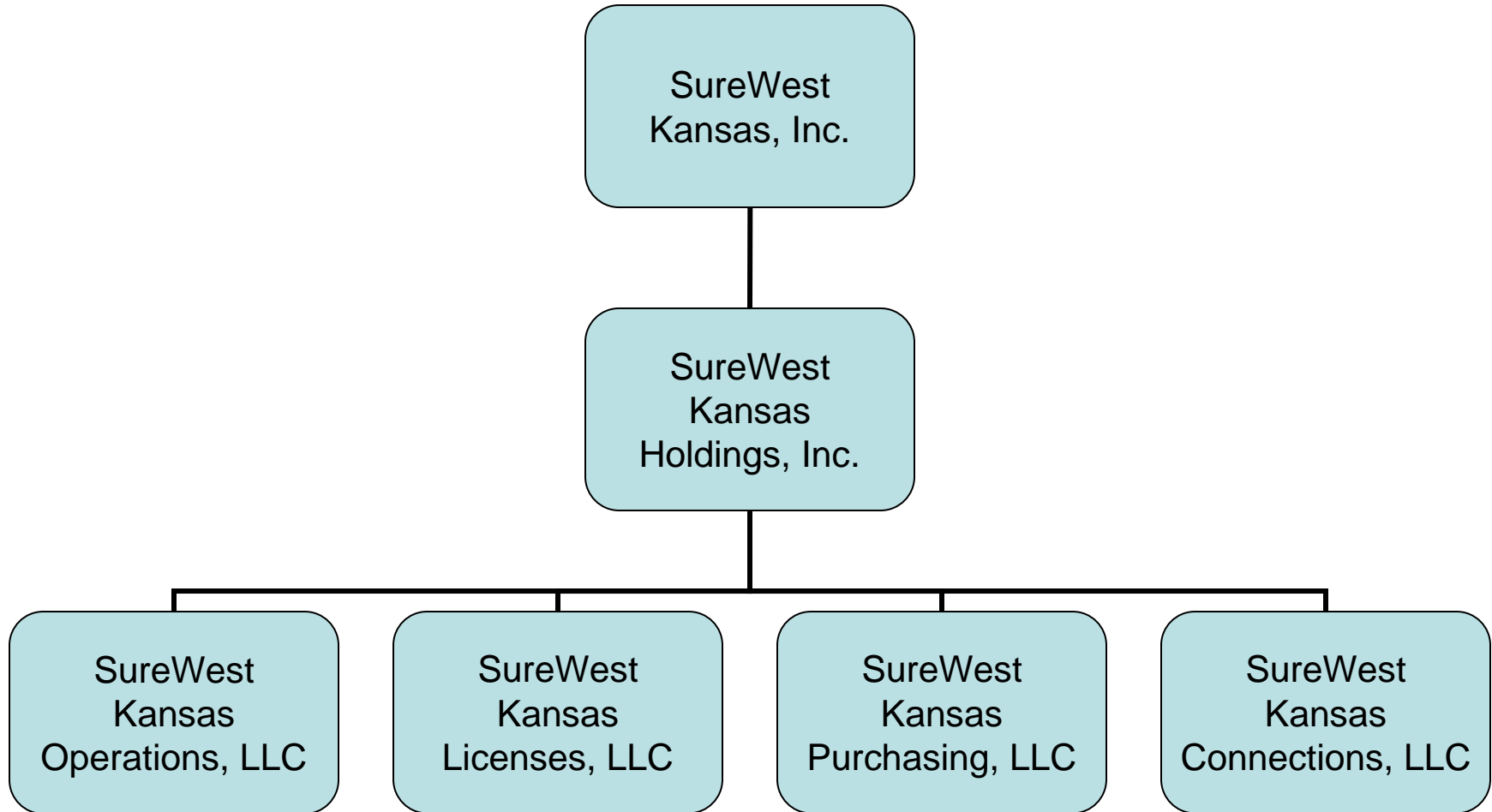
SureWest Communications

August 2009



SureWest Kansas, Inc.

August 2009



SECTION 5.0 - NETWORK SERVICE DESCRIPTIONS (continued)**5.12 ISDN PRI Service**

ISDN PRI Service provides access to and from the Public Switched Telephone Network for circuit-switched voice (CSV) and circuit switched data (CSD) communications. ISDN PRI Service is provided using Integrated Services Digital Network (ISDN) architecture. ISDN services available with ISDN PRI Service use Primary Rate Interface (PRI) technology. ISDN PRI Service employs a 1.544 Mbps facility typically divided into 23 B channels and 1 D channel. B channels are used for voice and data communications while the D channel provides out-of-band signaling. These services are subject to availability of facilities and equipment.

5.13 Fill-the-T Service

Fill-the-T service is a high capacity DS1 service available to business customers whereby the customer allocates the DS1 channel assignments between voice or data, depending on the customer's needs and specifications.

5.14 Flex - T Service

Flex - T is a bundled product consisting of a high capacity DS1 service available to business customers that allows the customer to utilize a minimum of 16 channels up to a maximum of 24 channels for voice and/or data, and combines this with long distance minute packages of 1000 to 40,000 minutes.

(N) 5.15 Foreign Exchange Service

Foreign Exchange (FX) Service is local exchange service furnished to a customer from an intraLATA exchange other than the one in which they are located. FX service is provided only in connection with regular business or residence access line service. FX service is available only where the Company has facilities to provide such service.

SECTION 6.0 - LOCAL SERVICES PRICE LIST (continued)

6.13 Flex - T Business Service

The minimum number of channels that may be ordered with any Flex – T service package is 16.

| | Month to Month Contract | 12 Month Contract | 24 Month Contract | 36 Month Contract |
|--|-------------------------|-------------------|-------------------|-------------------|
| 16 Channels with 1000 Long Distance Minutes ⁵ | \$449.95 | \$399.95 | \$349.95 | \$299.95 |
| 16 Flex to 24 Channels with 2000 Long Distance Minutes | \$549.95 | \$499.95 | \$449.95 | \$399.95 |
| 16 Flex to 24 Channels with 5000 Long Distance Minutes | \$649.95 | \$599.95 | \$549.95 | \$499.95 |
| 16 Flex to 24 Channels with 10,000 Long Distance Minutes | \$749.95 | \$699.95 | \$649.95 | \$599.95 |
| 16 Flex to 24 Channels with 20,000 Long Distance Minutes | \$949.95 | \$899.95 | \$849.95 | \$799.95 |
| 16 Flex to 24 Channels with 40,000 Long Distance Minutes | \$1249.95 | \$1199.95 | \$1149.95 | \$1099.95 |

(N) **6.14 Foreign Exchange Service**

Foreign Exchange (FX) Service is provided at the customer’s standard business or residence access line rate. FX Service is available only in the Kansas City Metropolitan calling area and only where facilities exist to provide the service. FX Service is not available in any calling areas or tiers outside of the metropolitan calling area.

⁵ Only 16 channels are available with this package. Any channels over 16 are charged existing Fill-the-T channel costs.